

POROSITY DEPTH TRENDS

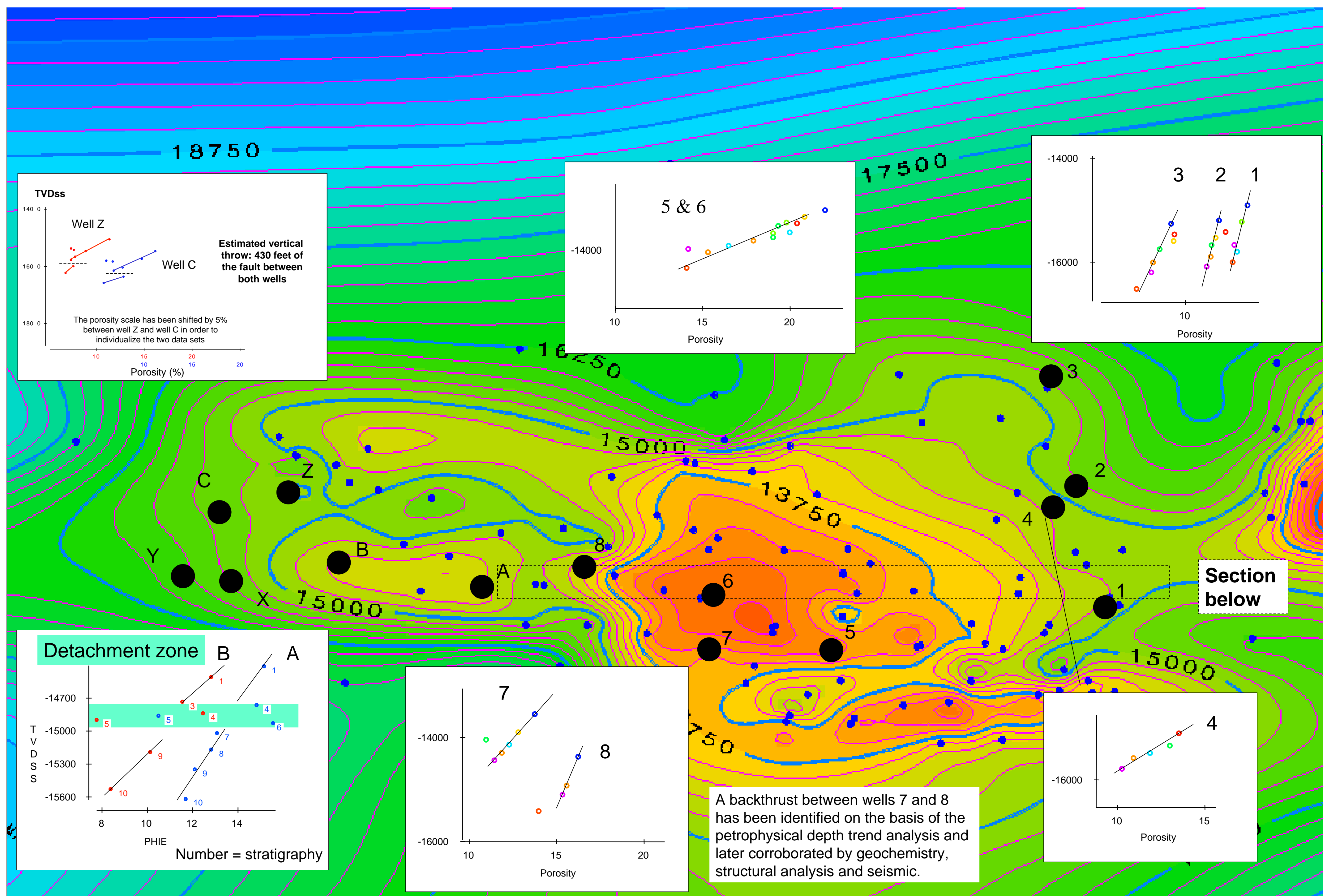


Fig.17 Variable porosity-depth trend within a complex structure

Variations of porosity with depth are observed in the Santa Barbara Field

Because a large part of the tectonic activity is posterior to the hydrocarbon emplacement

The rock quality is linked to the burial and diagenetic history prior to the emplacement

Areas of the field are characterized by well defined trends that are linked to the tectonic overprint (Figs. 17, 18, 19, & 20)

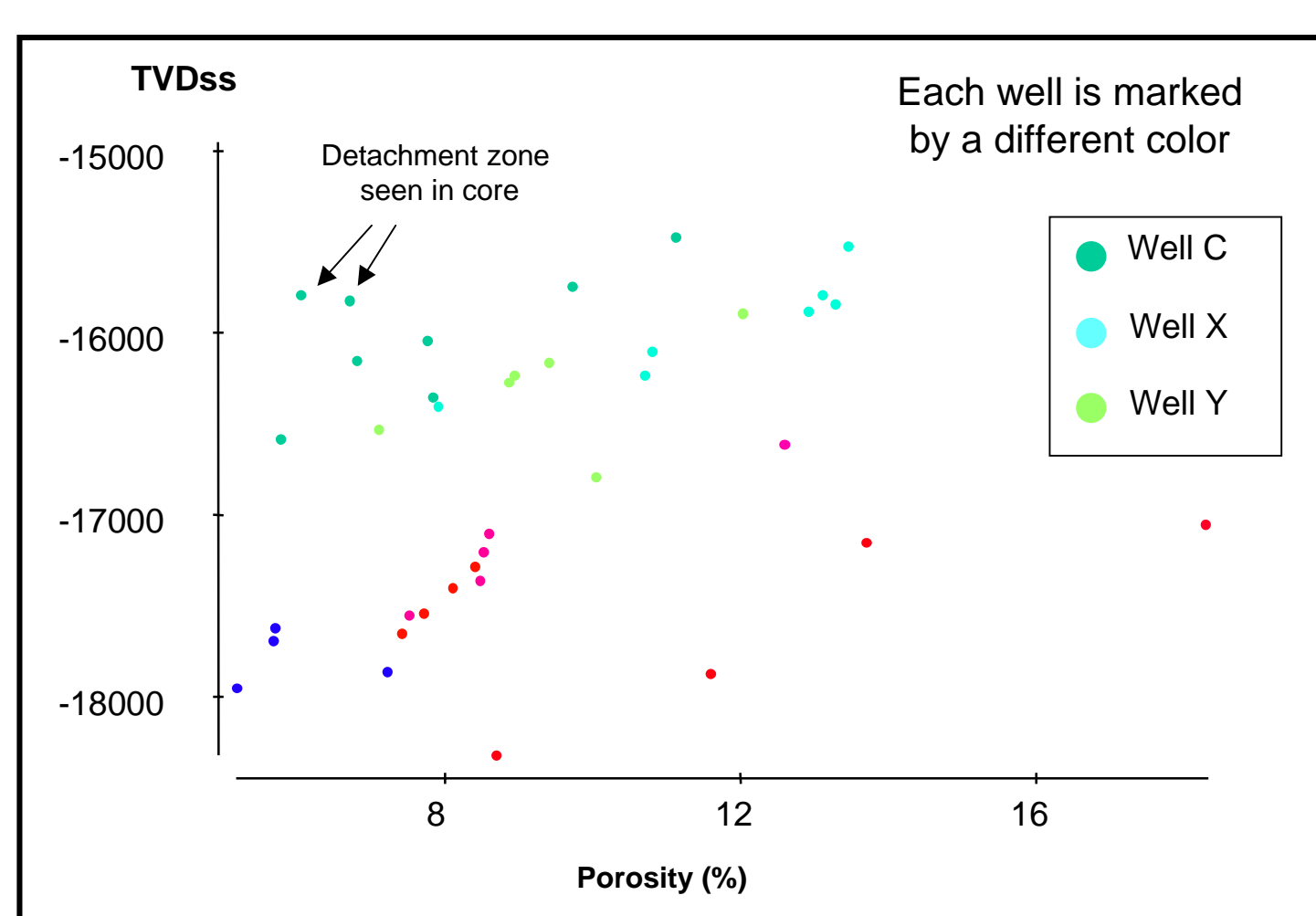


Fig. 18 Porosity average per unit versus depth

The three shallowest wells exhibit linear porosity, depth patterns:

Well X, all of well Y except the lowermost unit and the lowest two units of well C are perfectly aligned. This group of data points is parallel to another trend (Trend 2) formed by 4 points from well C (Figs.18 & 19).

Two anomolous points correspond to a zone affected by the detachment seen with the Quick-Look Dip Evaluation and confirmed by core observations.

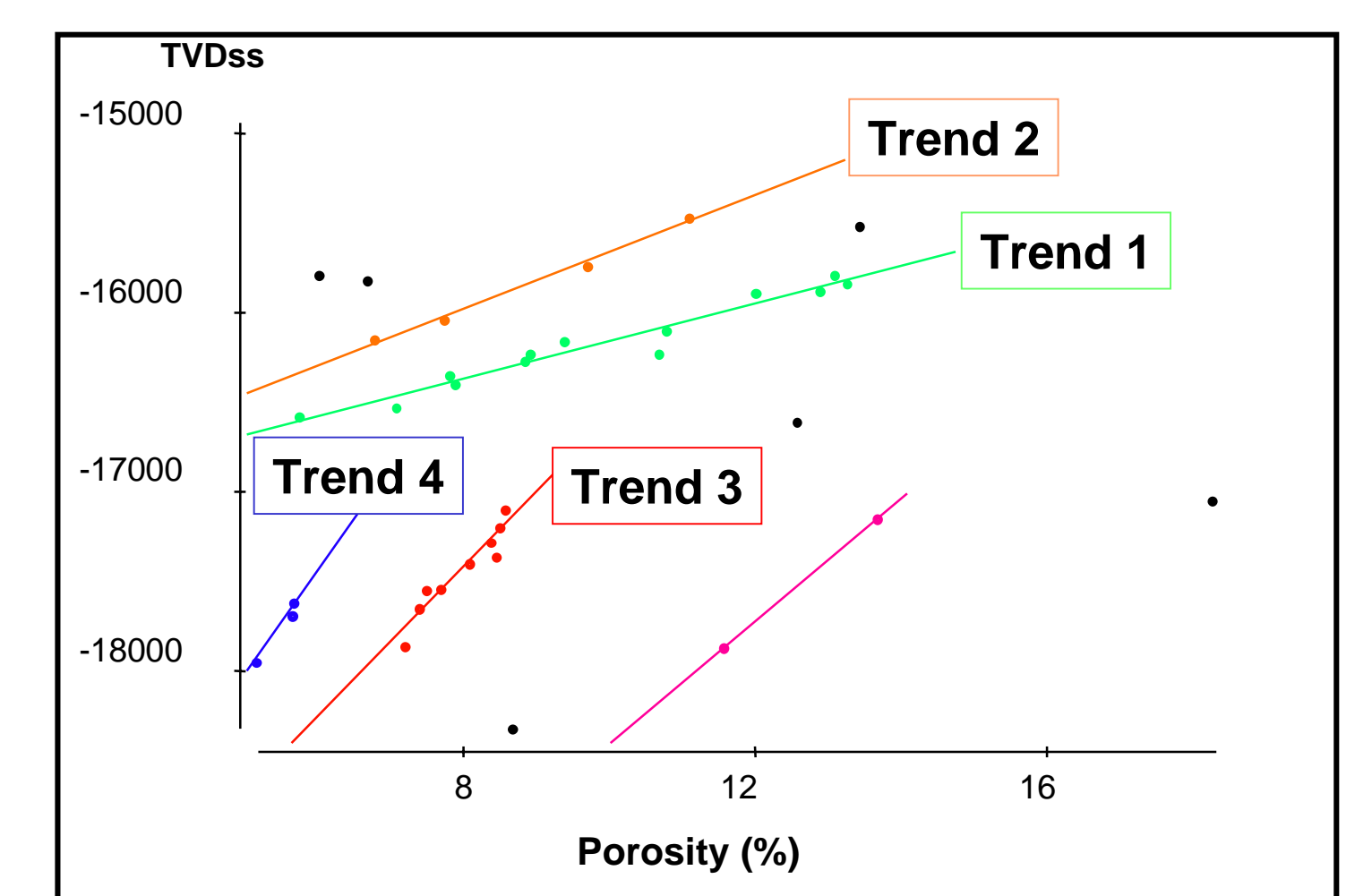


Fig. 19 Depth Trend Analysis in the southwestern part of Santa Barbara

Fig.20 Porosity depth trend variation along a Fault Bend Fold profile

