

*Fig.1. Sketch of depositional setting of the upper Sarvak Formation in the studied area. The general setting is a ramp carbonate platform with various depositional sub-environments.*

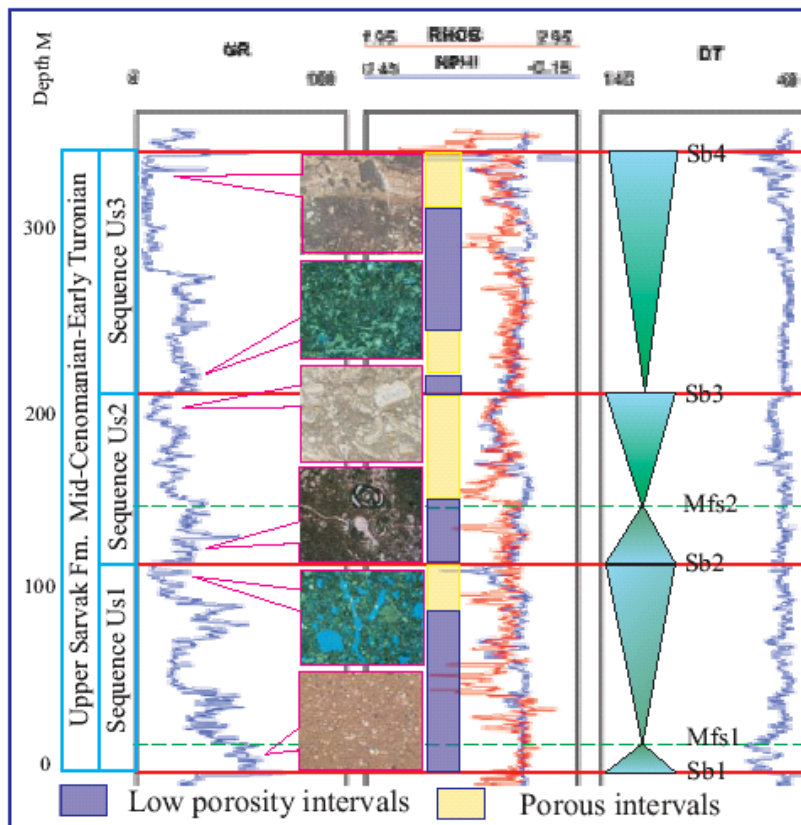


Fig. 2. Main sequences in the upper Sarvak Formation and the accommodation space indicating transgression and regression of shoreline. The porous intervals are located mainly in regressive part of sequences US1, US2 and US3 and represent both facies and diagenetic effect. The sequence US2 comprises more porous intervals.