

Solid Bitumen in Shales: Facies and Maturity Effects on Microstructures*

David Misch¹, Jop Klaver², Doris Gross¹, B. Liu¹, Reinhard F. Sachsenhofer¹, Joyce Schmatz², and Janos L. Urai³

Search and Discovery Article #51581 (2019)**

Posted July 8, 2019

*Adapted from oral presentation given at 2019 AAPG Annual Convention and Exhibition, San Antonio, Texas, May 19-22, 2019

**Datapages © 2019 Serial rights given by author. For all other rights contact author directly. DOI:10.1306/51581Misch2019

¹Montanuniversitaet Leoben, Leoben, Austria (david.misch@unileoben.ac.at)

²MaP - Microstructure and Pores GmbH, Aachen, Germany

³RWTH Aachen University, Aachen, Germany

Abstract

Solid bitumen is in the focus of recent research work on shale oil/gas plays as it might lower effective gas permeabilities due to the occlusion of pore throats, but also provide important hydrocarbon storage space and form migration pathways if a porous network of oil-wet pores is present. However, despite its significance for the quality of a shale reservoir, ambiguities about the various definitions of (solid) bitumen in organic geochemistry and petrography, as well as regarding the actual onset of compositional and microstructural transformations during thermal maturation and accompanying hydrocarbon generation, exist. In an attempt to visualize different solid bitumen types and transformation stages over a broad maturity range (0.5-2.7% R_o) in shales of varying primary kerogen composition, we reviewed optical and scanning electron microscopy data of shales with a Cambrian to Triassic age with emphasis on the petrographic characteristics of solid bitumen.

We were able to identify in-situ pre-oil solid bitumen as well as migrated post-oil solid bitumen at various maturity stages. We found solid bitumen to be surprisingly mobile already at marginal to early oil window maturity, arguing for significant influence of primary migration. Onset of porosity development in solid bitumen differs considerably between predominantly oil-prone (e.g. alginite) and gas-prone (vitrinite-rich) kerogen compositions; furthermore, solid bitumen (pyrobitumen at advanced maturity) in rocks with a terrestrially-dominated facies seems to be considerably less mobile compared to pre- and post-oil solid bitumen in oil-prone rocks. In most samples, several solid bitumen populations with varying reflectance were observed, complicating its use as a petrographic maturity indicator. Microstructural features such as irregularly distributed spongy porosity or detrital and authigenic mineral inclusions in the sub-micrometre scale were found to have a great influence on texture and reflectivity in lower-resolution optical microscopy. The formation of authigenic minerals (quartz, various carbonate phases, magnetite in Cambrian samples) was observed frequently in post-oil solid bitumen of oil-prone rocks; this points to a close genetic relationship between transformation products formed during hydrocarbon generation (e.g. acetate, carbon dioxide and methane) and the dissolution and precipitation of minerals during diagenesis.

Solid bitumen in shales: Facies and maturity effects on microstructures

Misch, D., Klaver, J., Gross, D., Liu, B., Sachsenhofer, R.F., Schmatz, J., Urai, J.L.

AAPG ACE San Antonio - 2019/21/05



Der Wissenschaftsfonds.

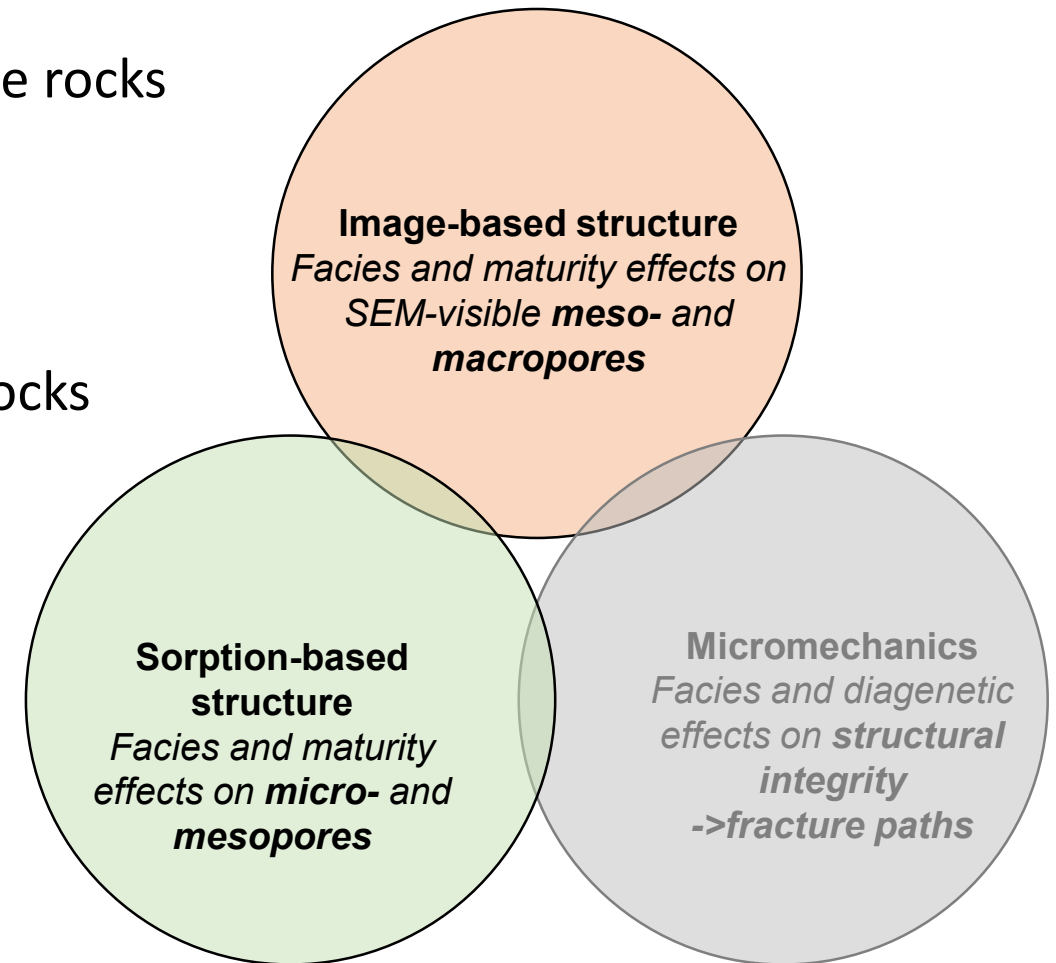
- **Cambrian:** Arthur Creek Fm., Australia
- **Ordovician/Silurian:** Graptolite Shale, Lithuania
- **Upper Visean:** Rudov Beds, Ukraine
- **Upper Jurassic:** Mandal Fm., Norway
- **Triassic:** Yanchang Fm., China
- **Miocene:** Vienna Basin, Austria

source rocks

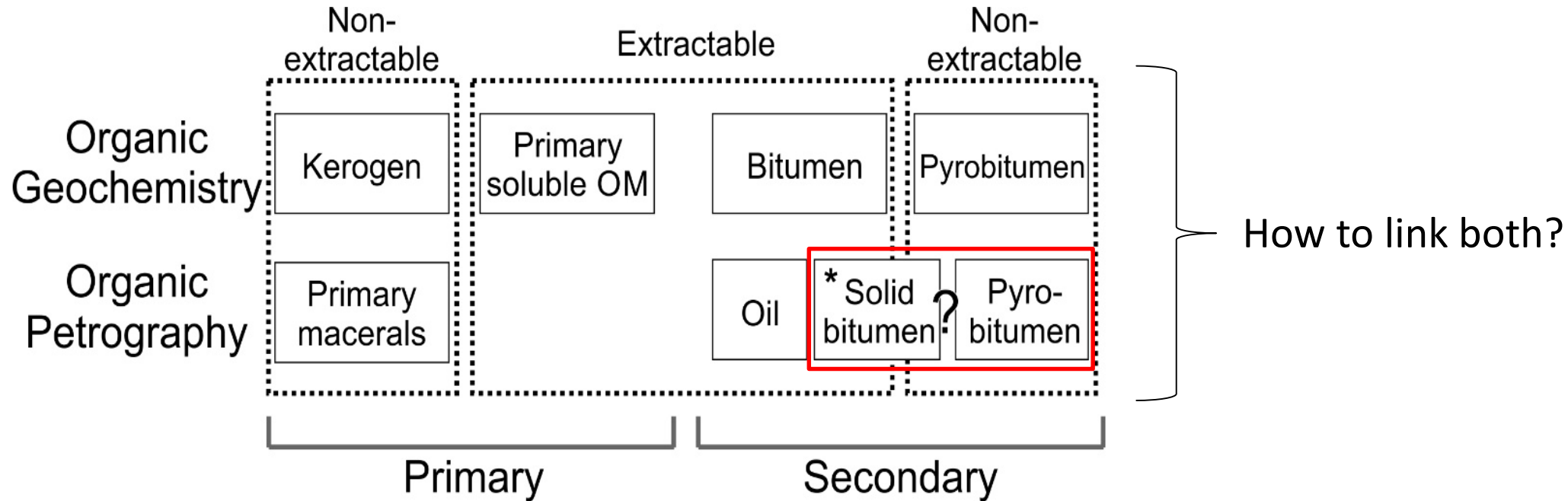
cap rocks

Data sources:

- > Comparative optical and scanning electron microscopy
- > Bulk geochemistry & source rock extracts
- > Gas adsorption
- > Mercury intrusion porosimetry

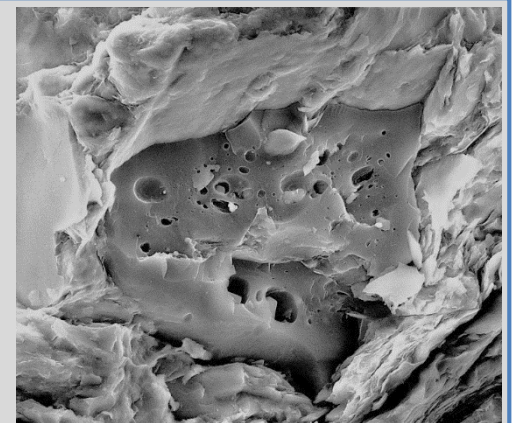


Solid bitumen in shale reservoirs

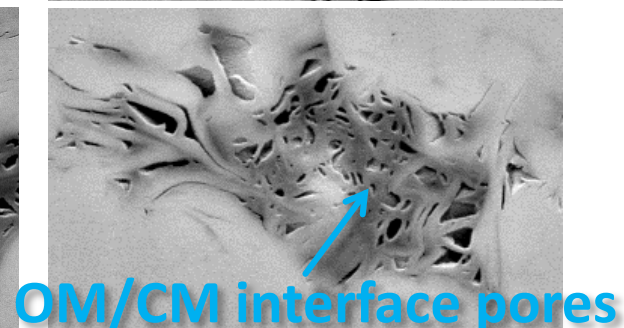
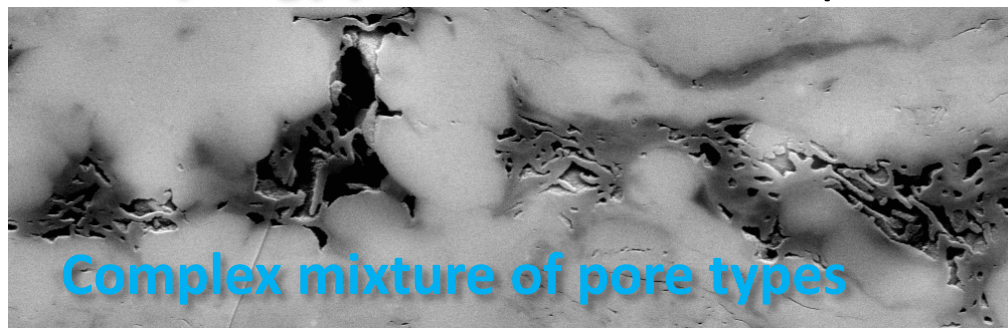
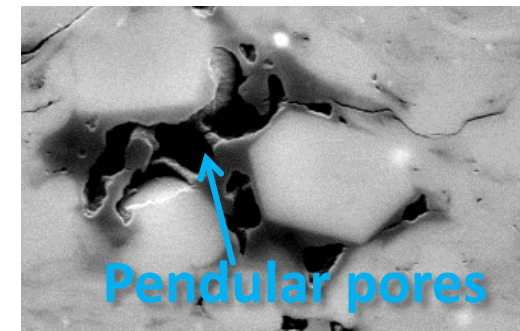
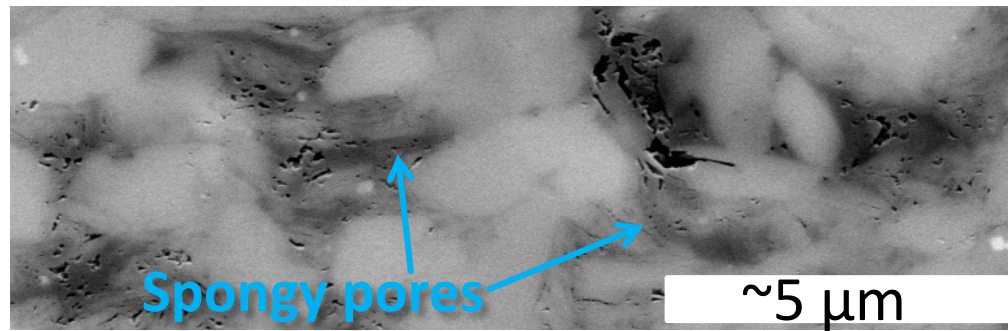
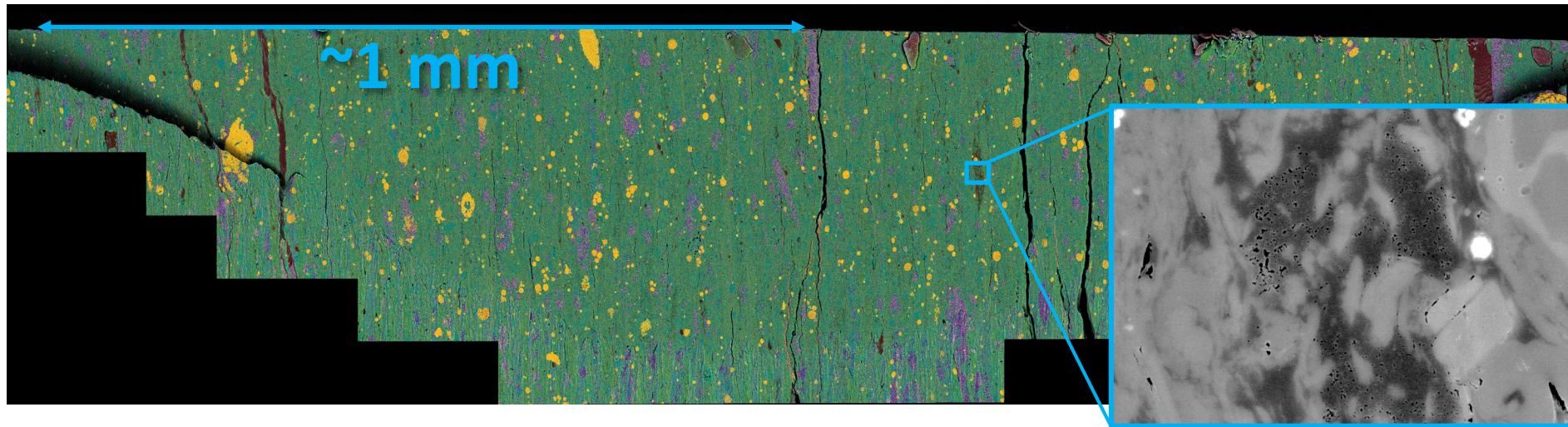


→ Solid bitumen plays an integral role for:

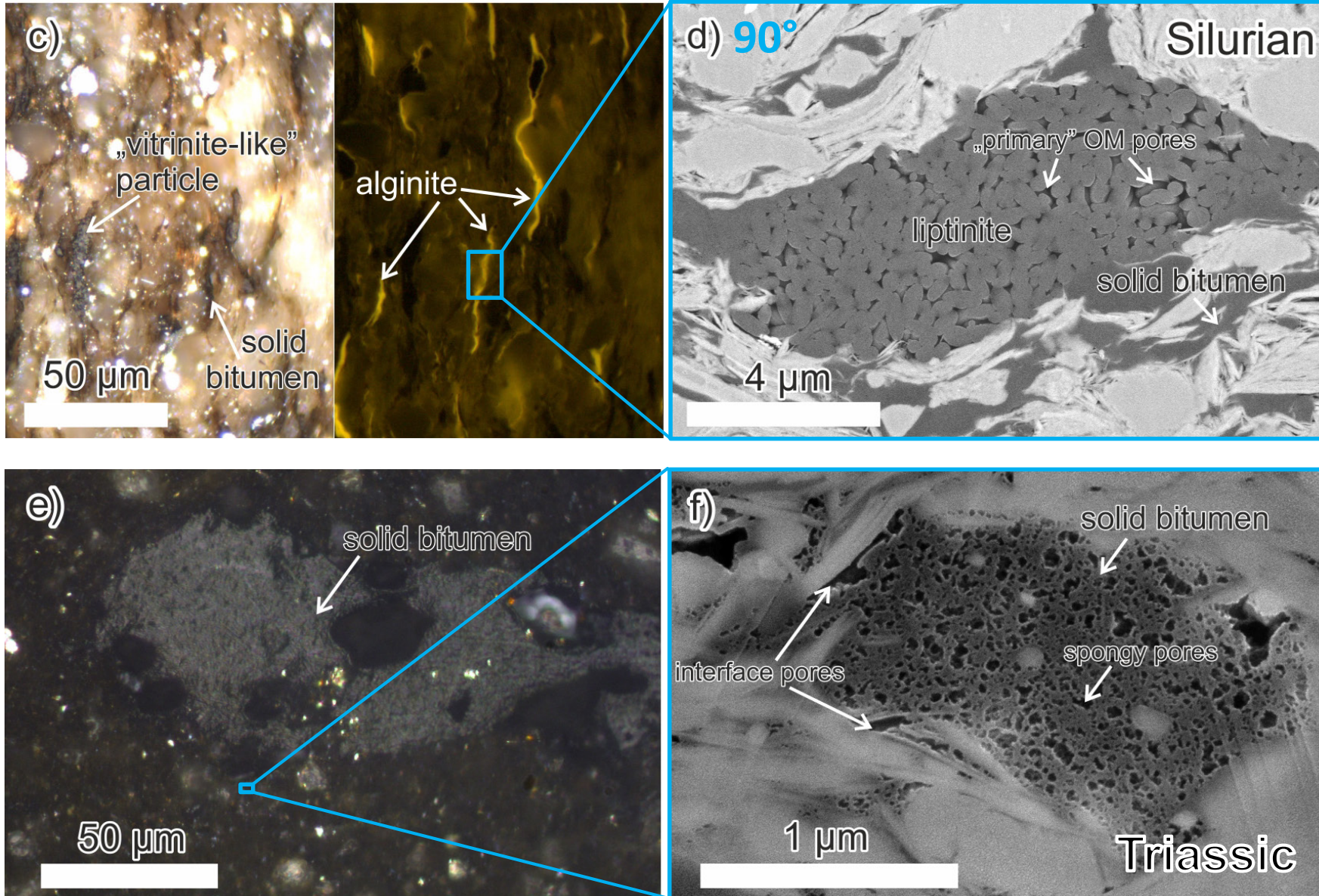
- Maturity evaluation
- Mineral authigenesis
- Porosity evolution
- HC storage and expulsion



Visualize organic matter textures: BIB-SEM



How to identify solid bitumen in the SEM?

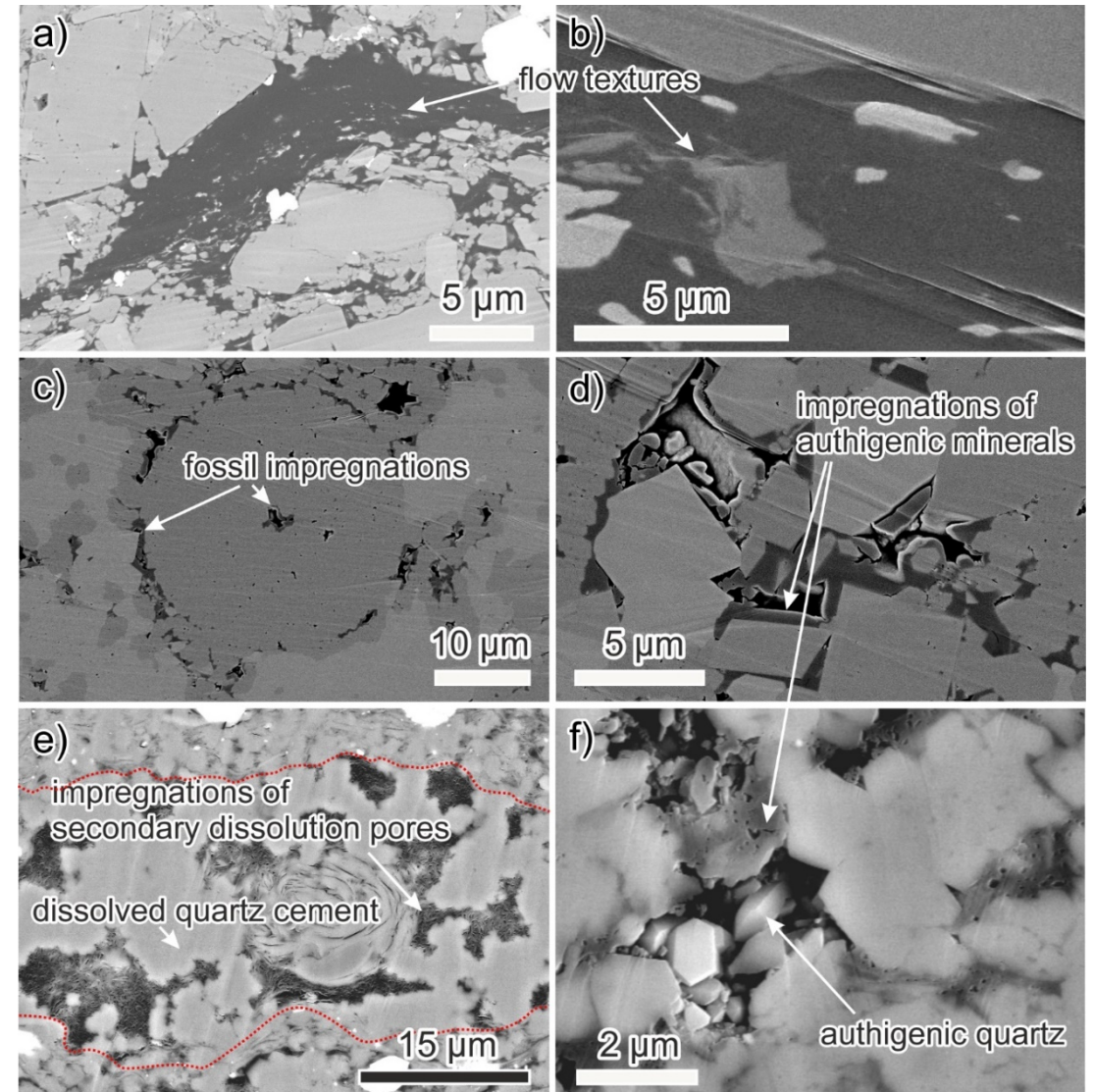
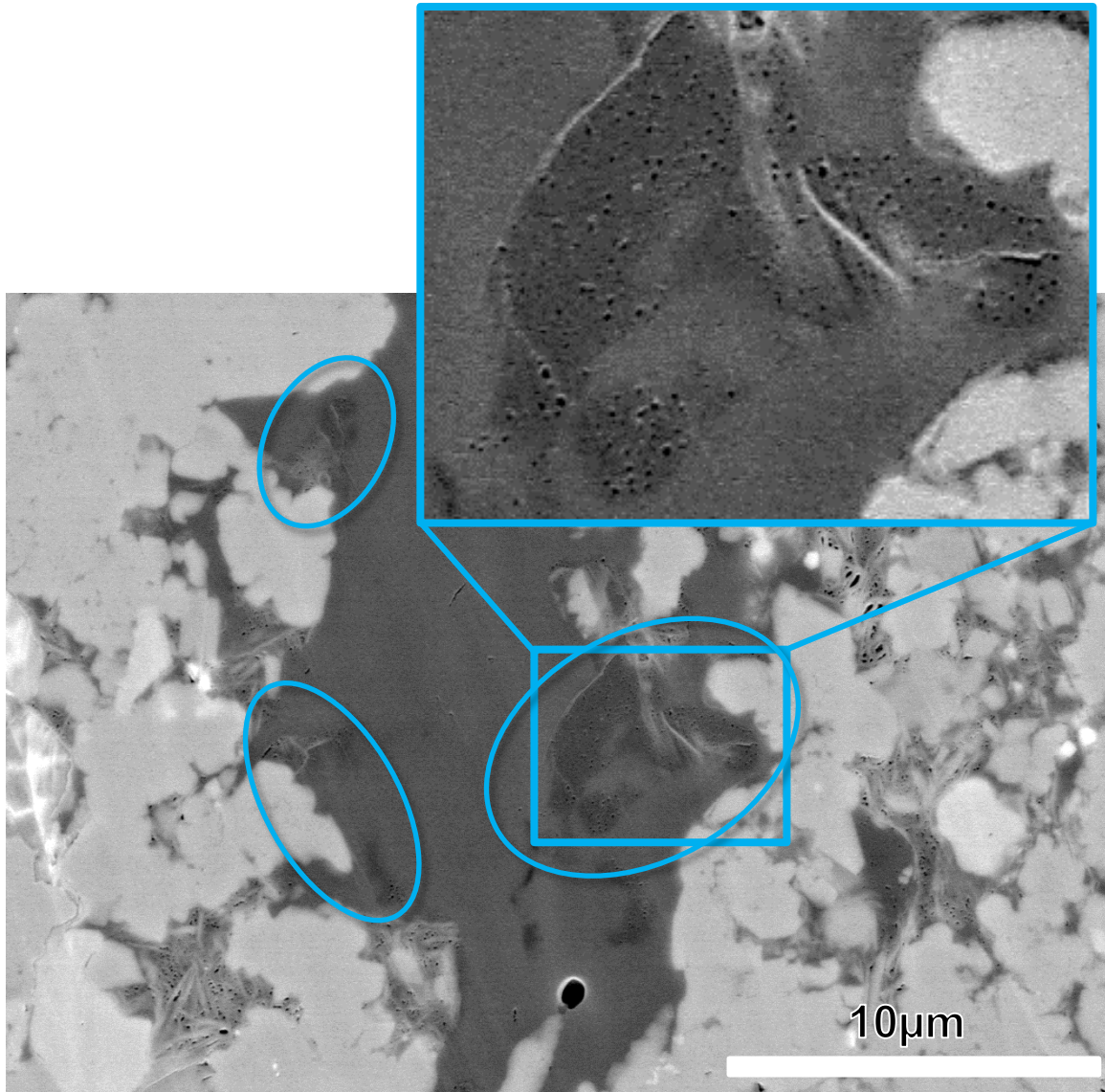


Solid bitumen: remobilized vs. in-situ

In-situ

hardly distinguishable!

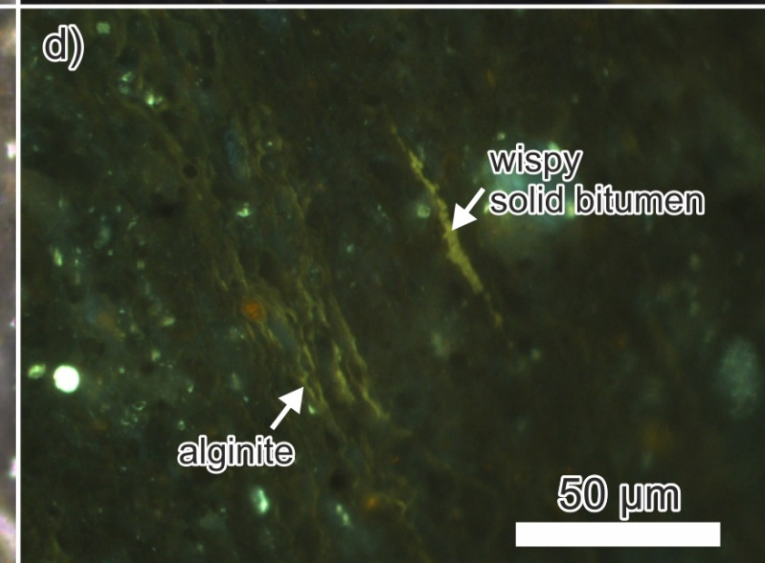
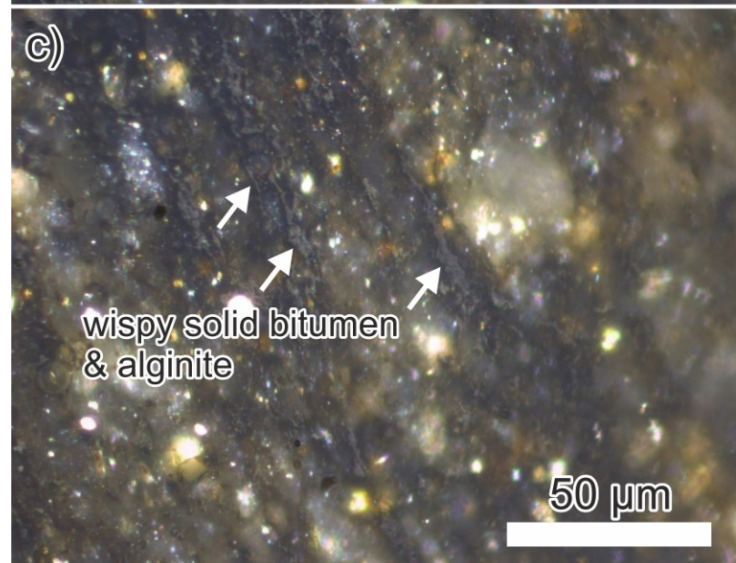
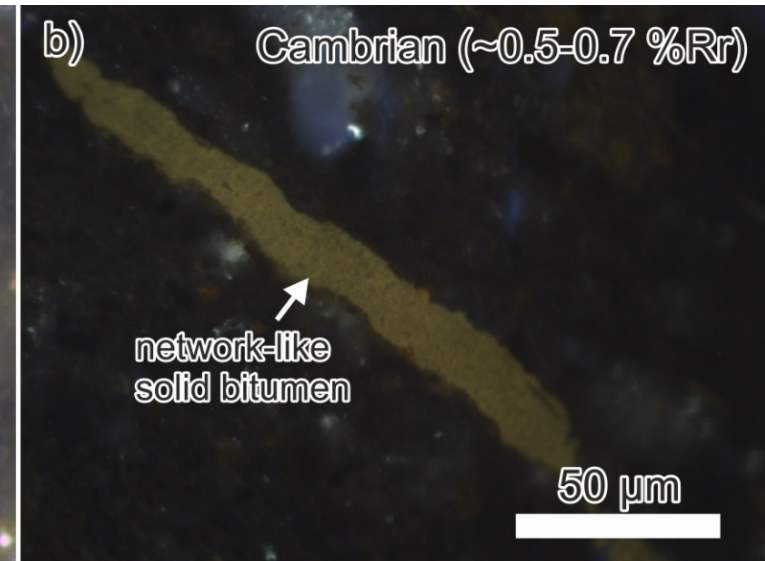
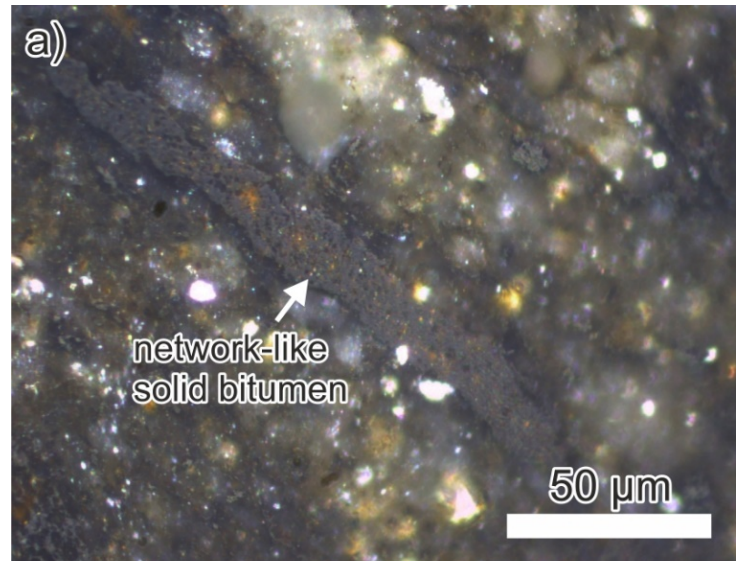
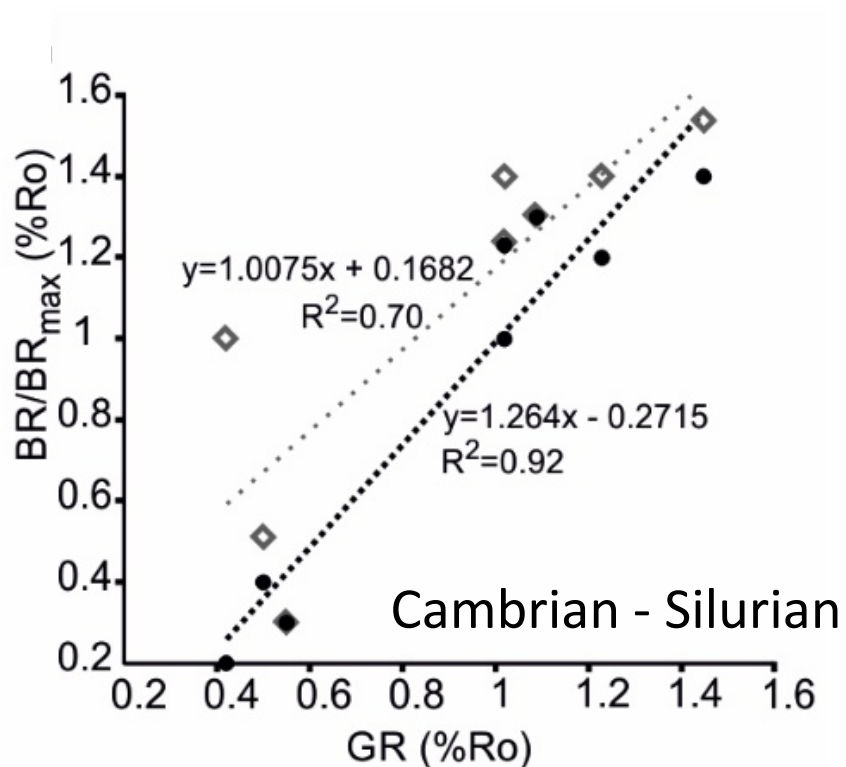
Remobilized



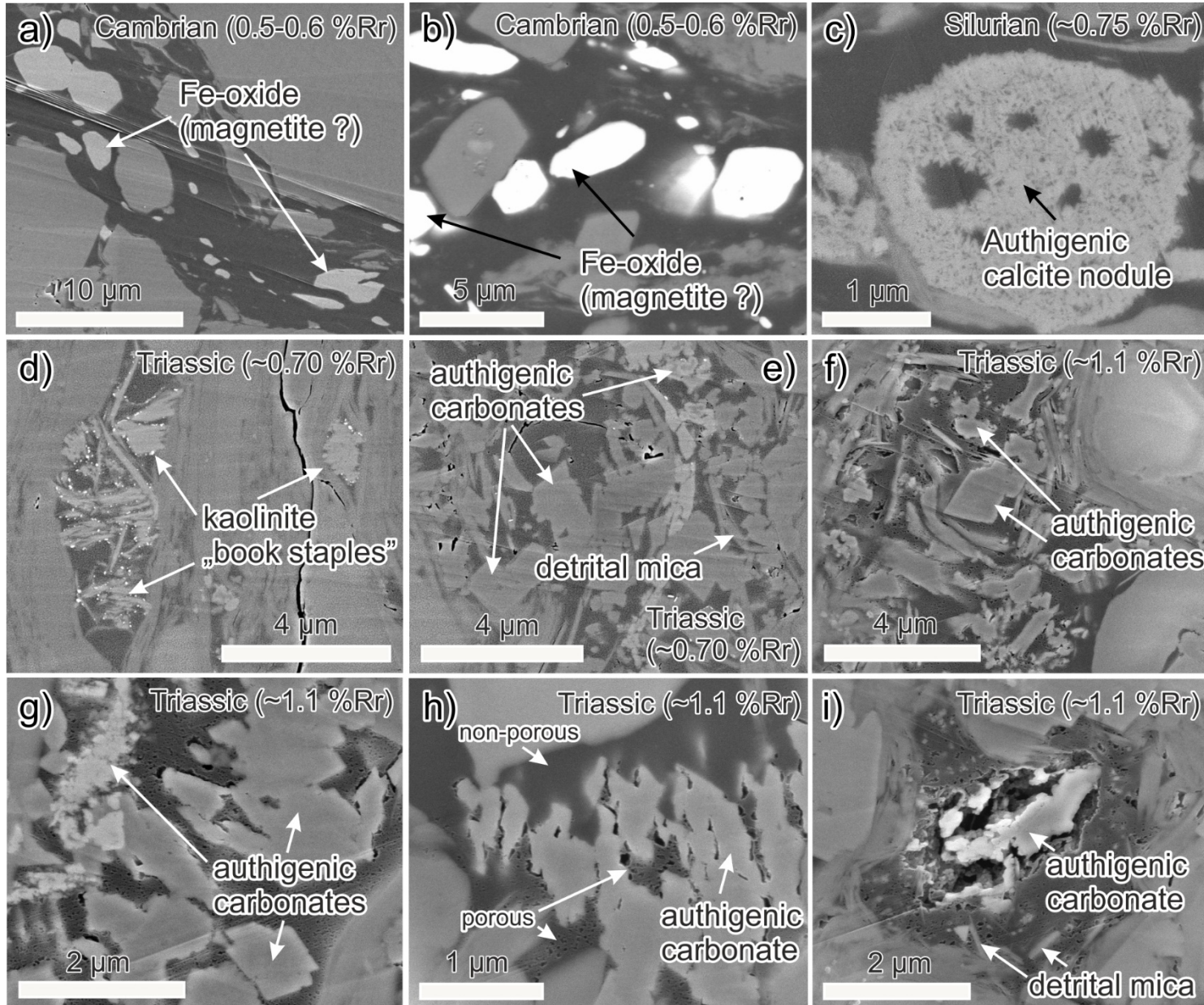
Solid bitumen: remobilized vs. in-situ

Fluorescence populations at early oil window:

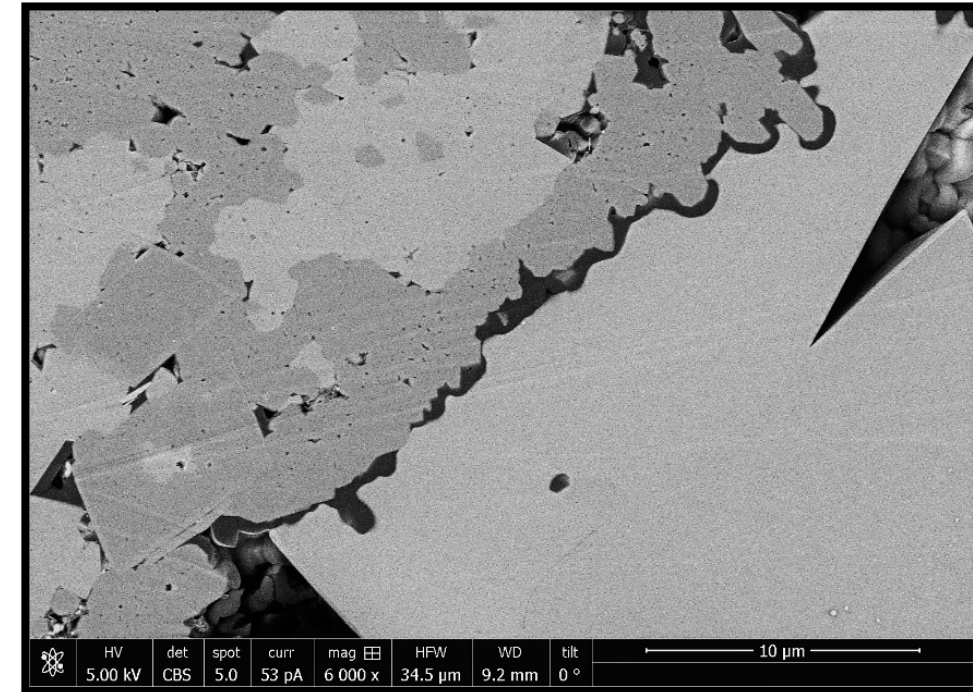
- > Wispy SB along alginites
- > Network SB in microfractures



Mineral authigenesis

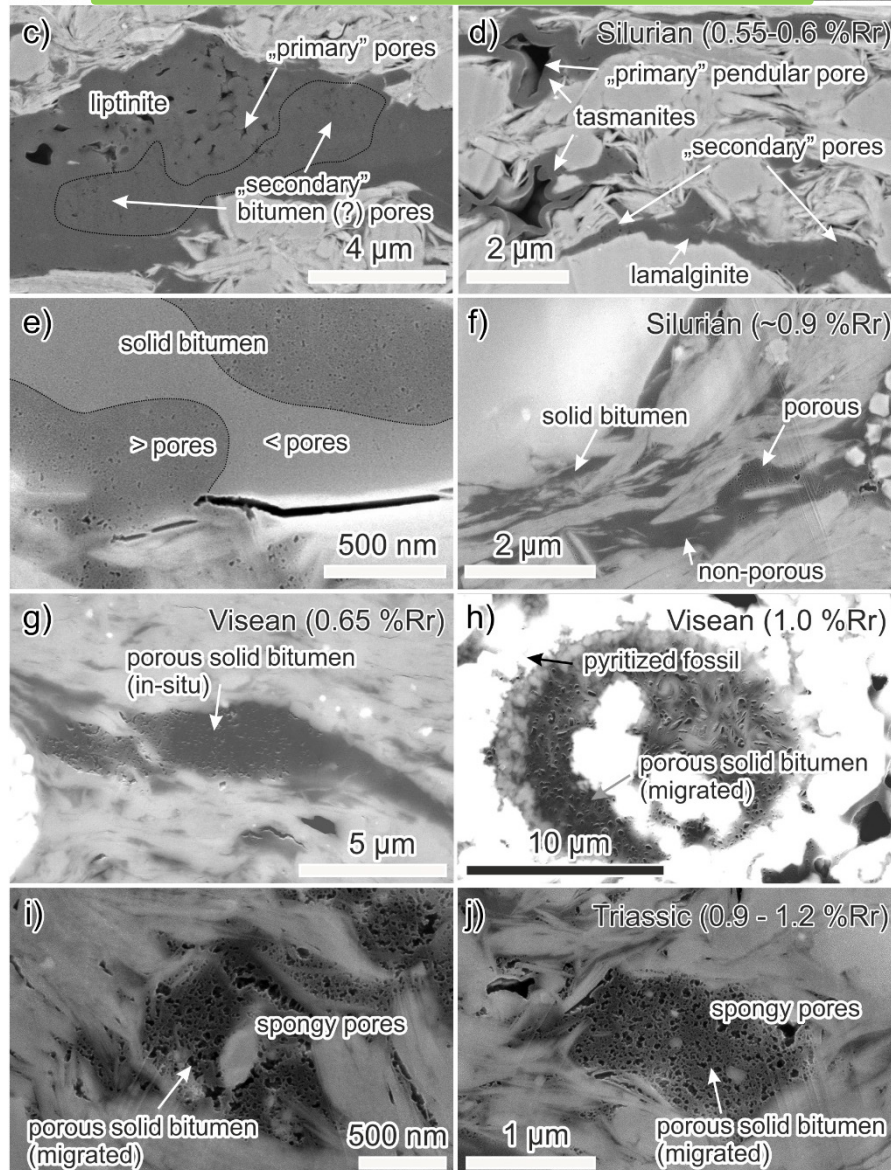


Two phase-fluid
(oil/SB – water)

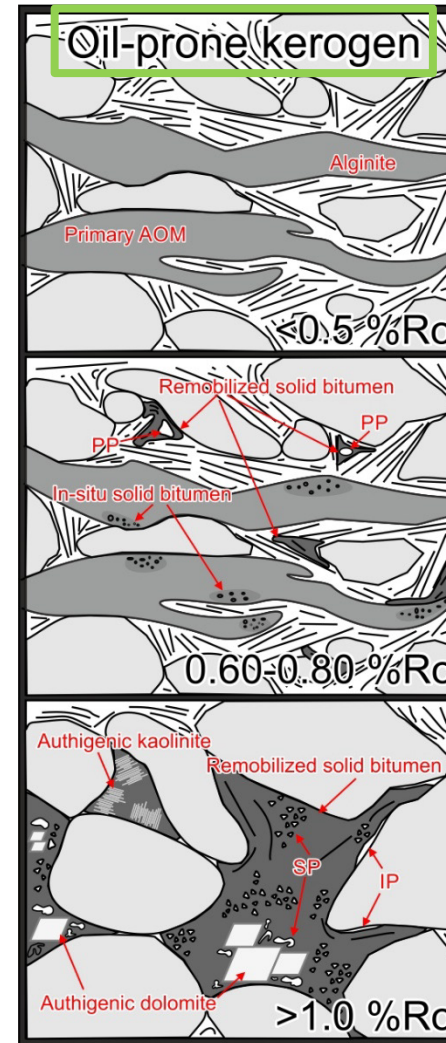


Solid bitumen porosity - organofacies

Oil-prone (Silurian – Triassic)



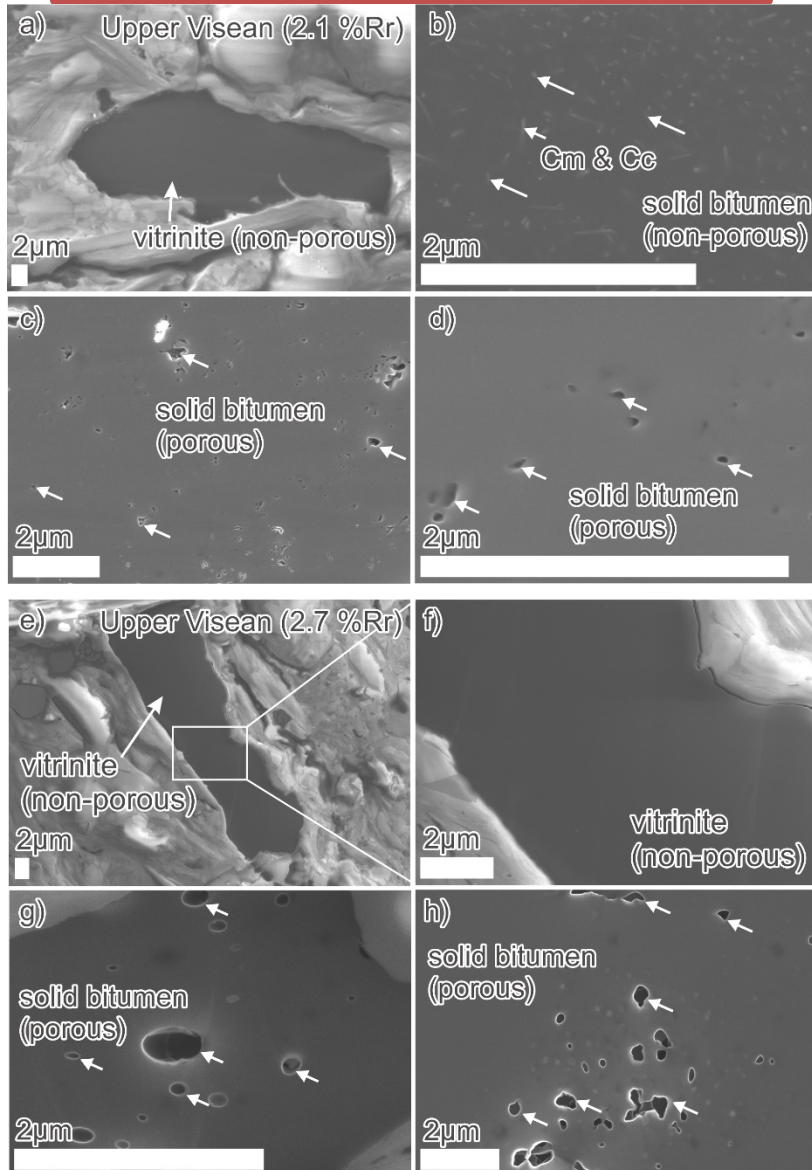
reactivity/mobility ↑



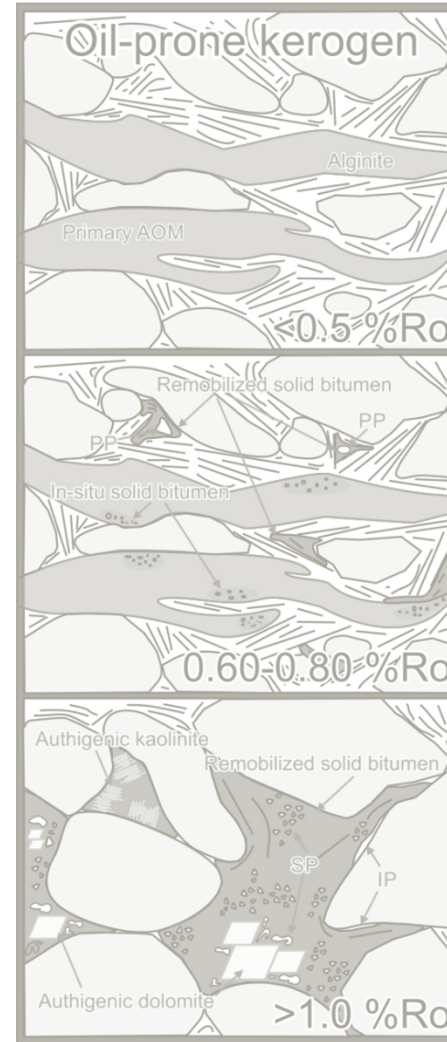
(~70 samples in total)

Solid bitumen porosity - organofacies

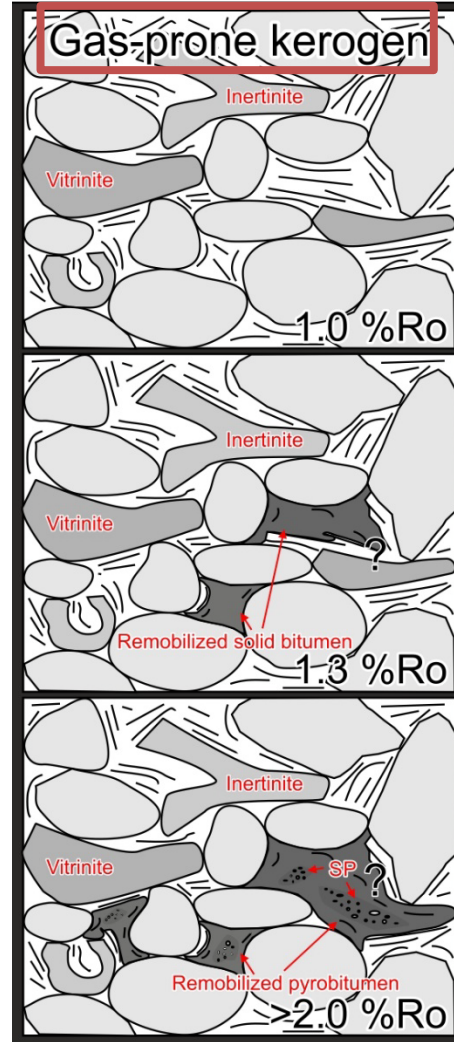
Gas-prone (Upper Visean)



reactivity/mobility ↑



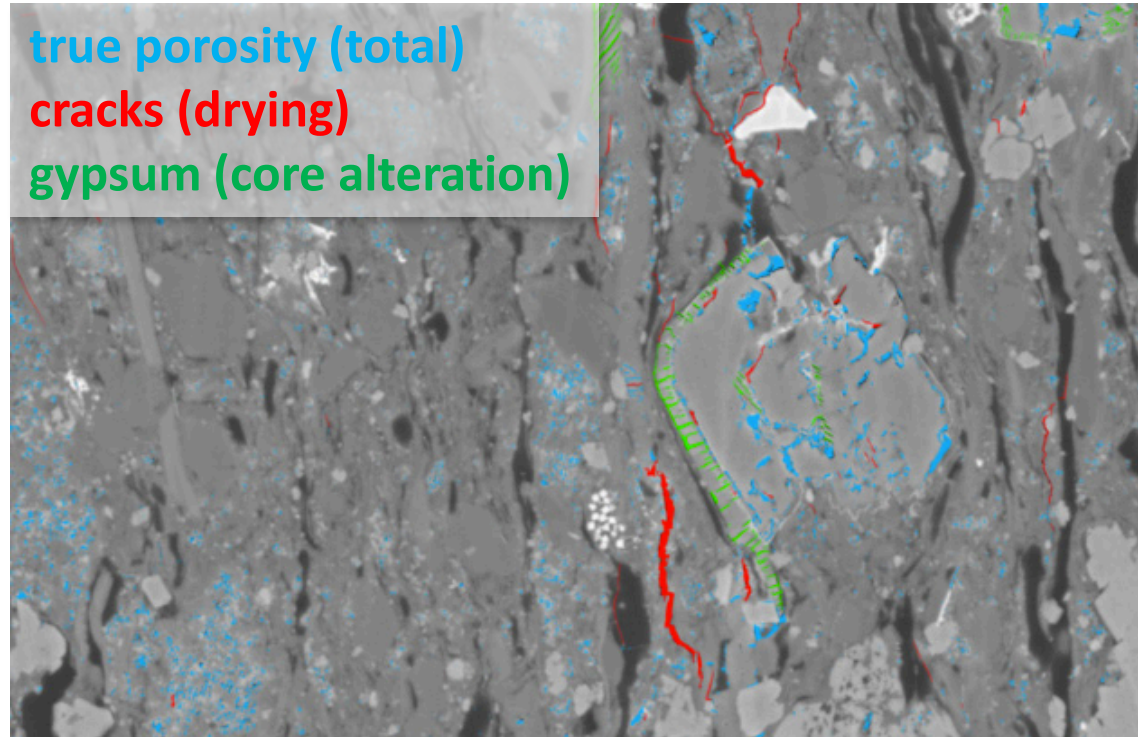
reactivity/mobility ↓



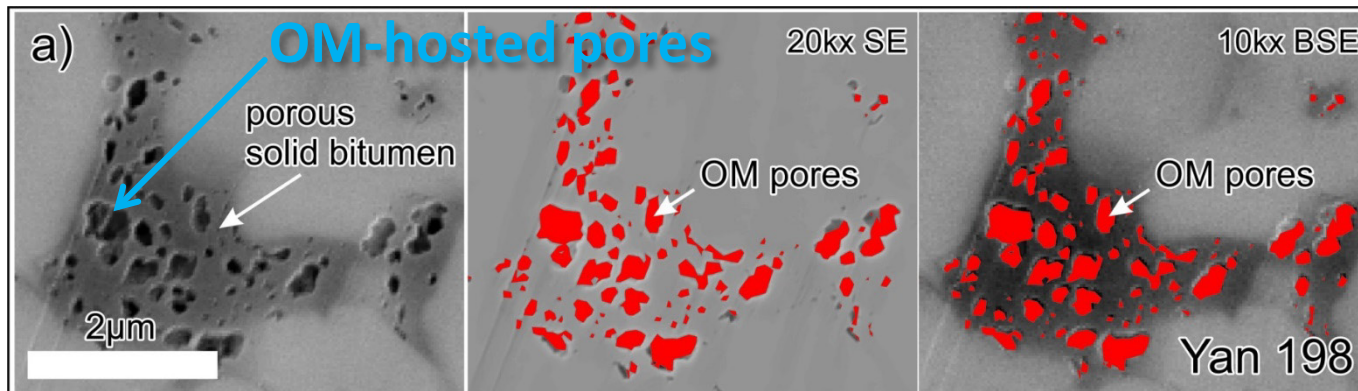
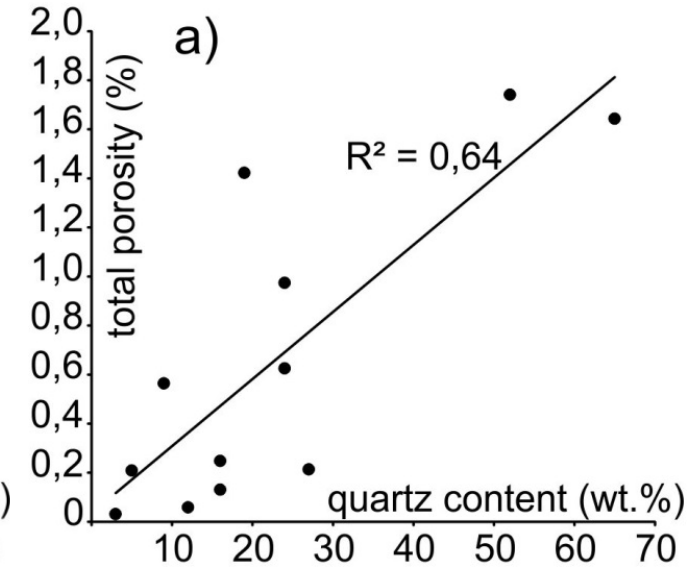
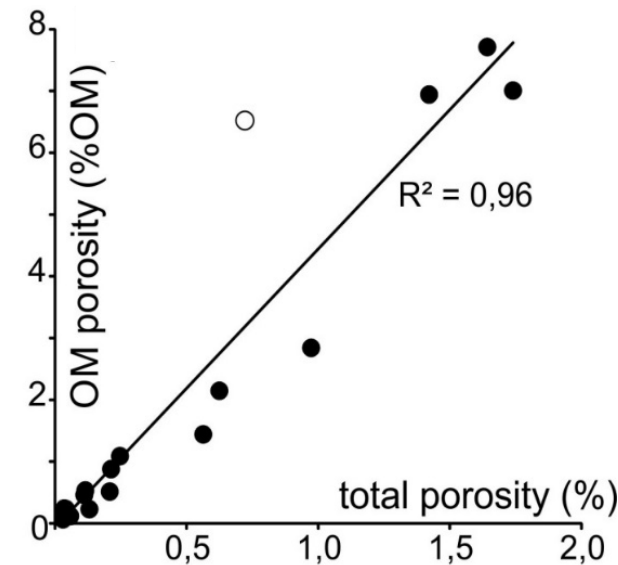
(~70 samples in total)

Quantification: total vs. OM-hosted porosity

BIB-SEM: Segmentation of pores on representative areas



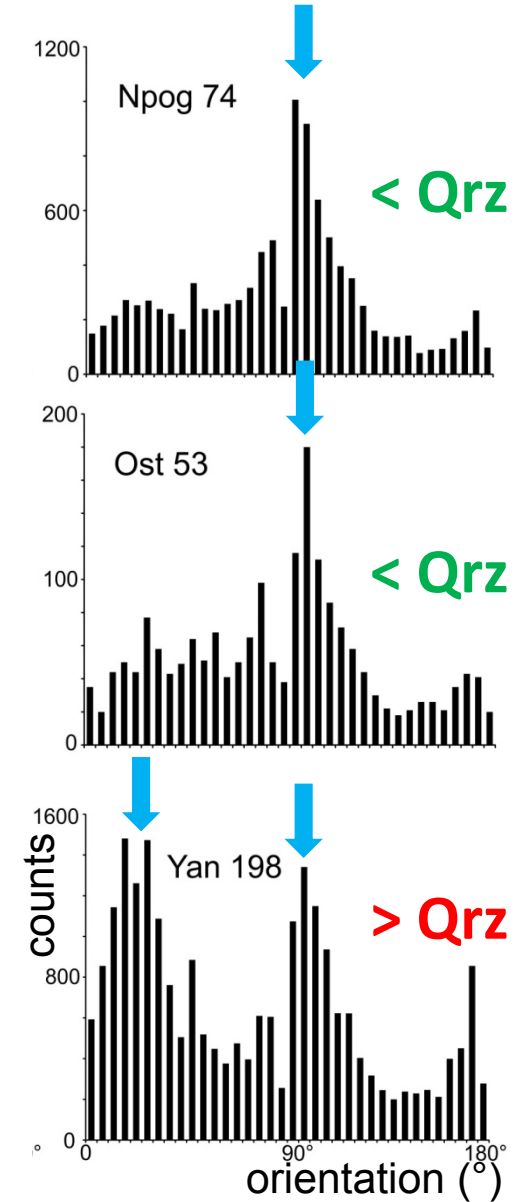
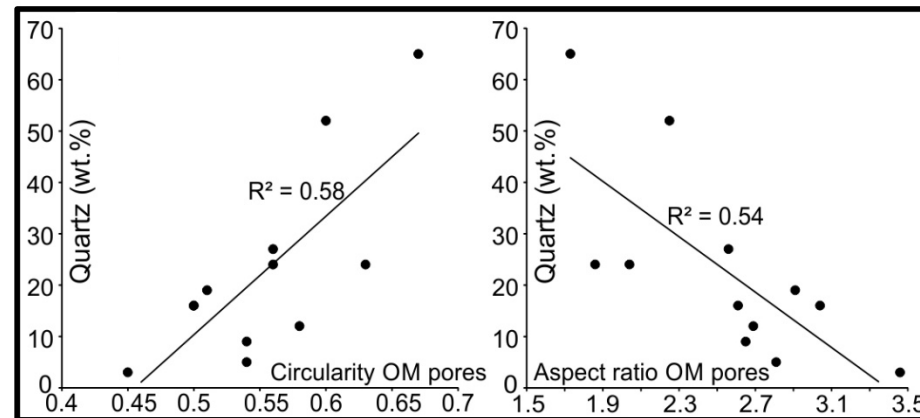
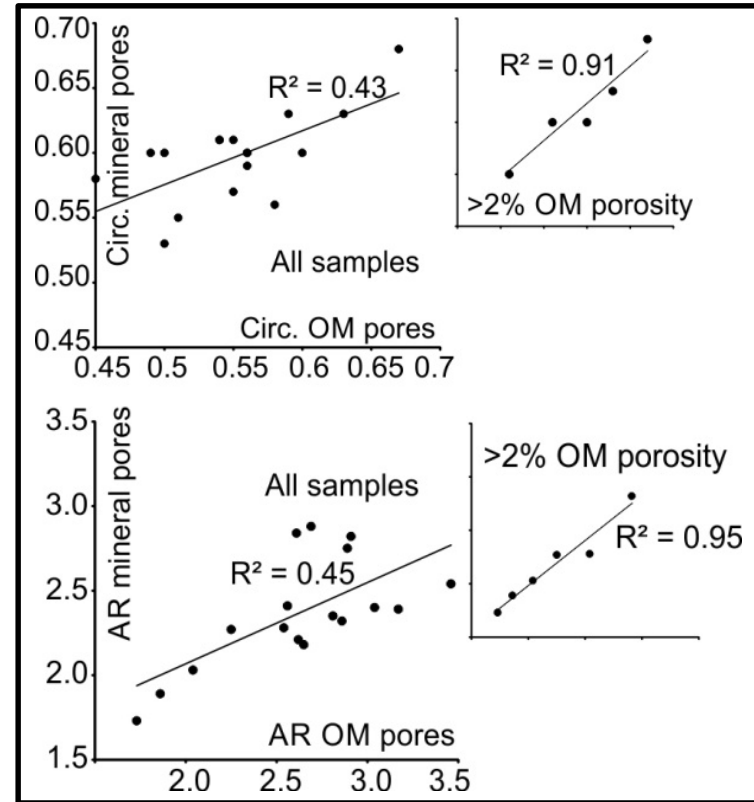
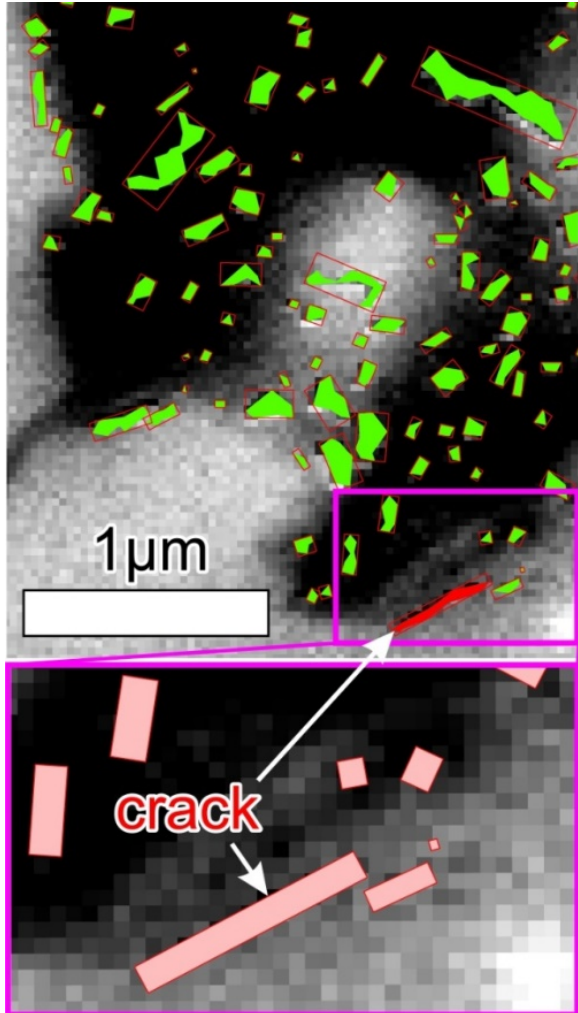
Upper Visean (17 samples)



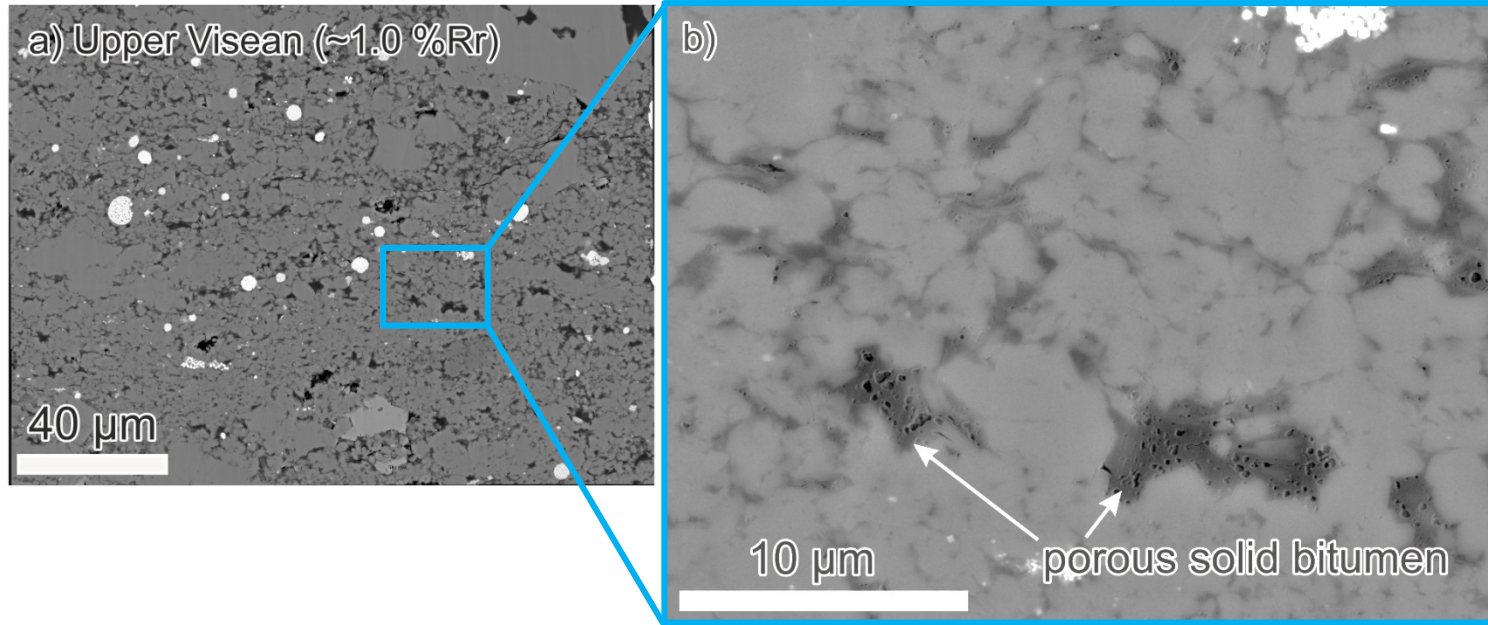
-> Correlation of ϕ_{total} vs. ϕ_{OM}

-> Weak correlation ϕ_{total} vs. wt% quartz

Influence of compaction on pores?



Hydrocarbon retention/expulsion



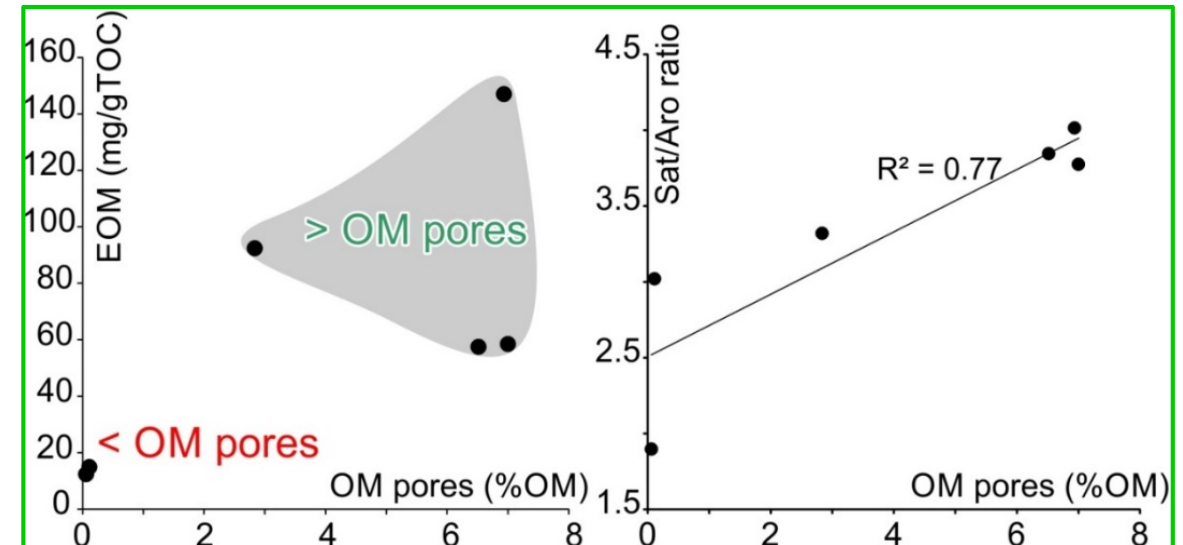
Often connected, porous networks

Extracts at equal maturity (1.0-1.1 %Ro VR)

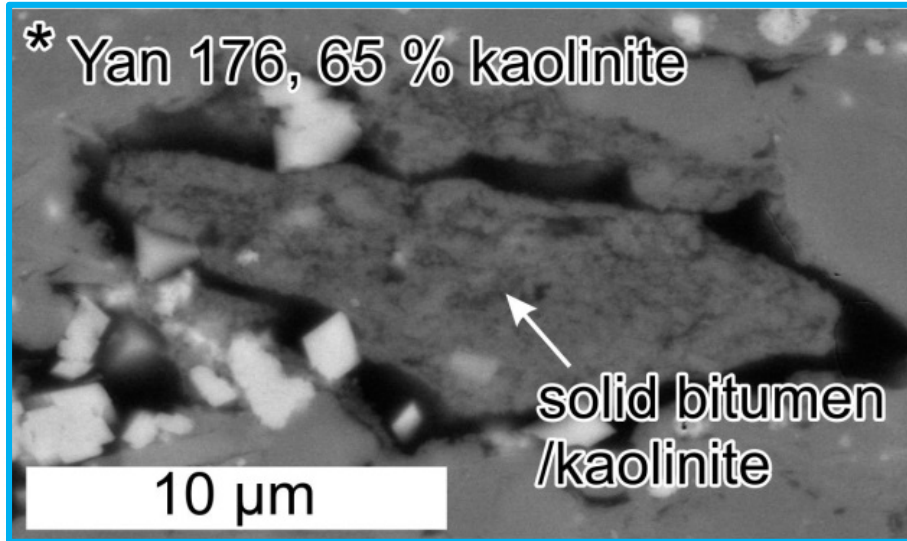
Source rock extracts:

Composition suggests that solid bitumen pores are filled with a lighter HC phase

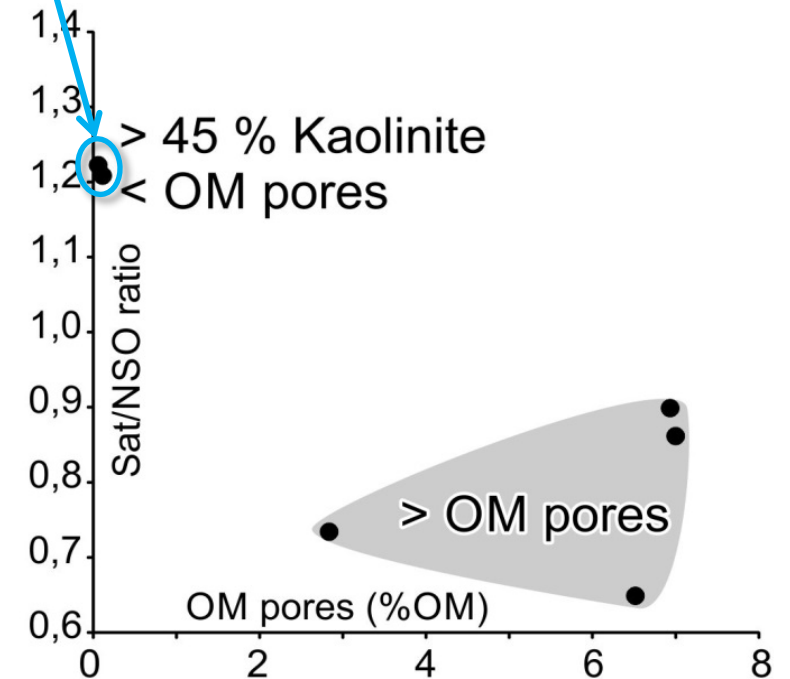
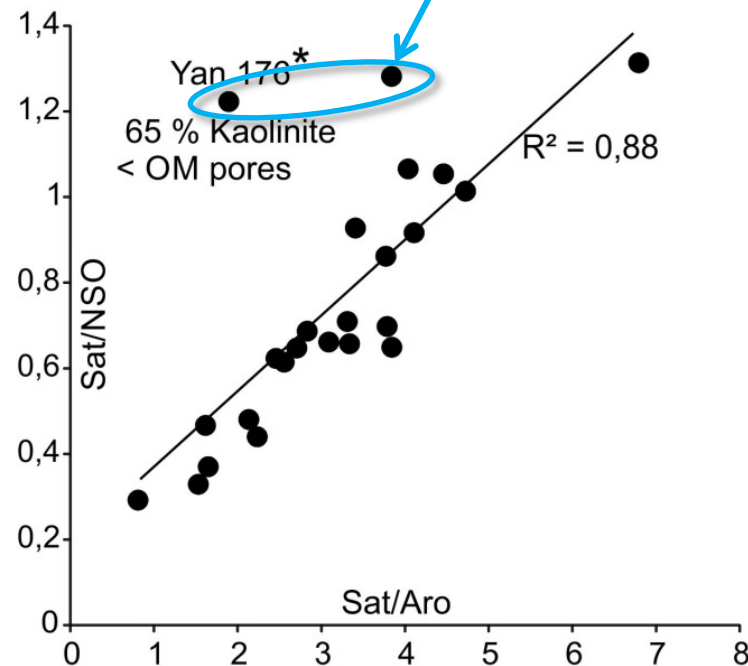
↑ OM-pores → ↑ EOM & Sat/Aro



Hydrocarbon retention/expulsion



Selective retention of NSOs by kaolinite (?)



Hydrocarbon retention/expulsion

Upper Jurassic Mandal Fm. (Norway)

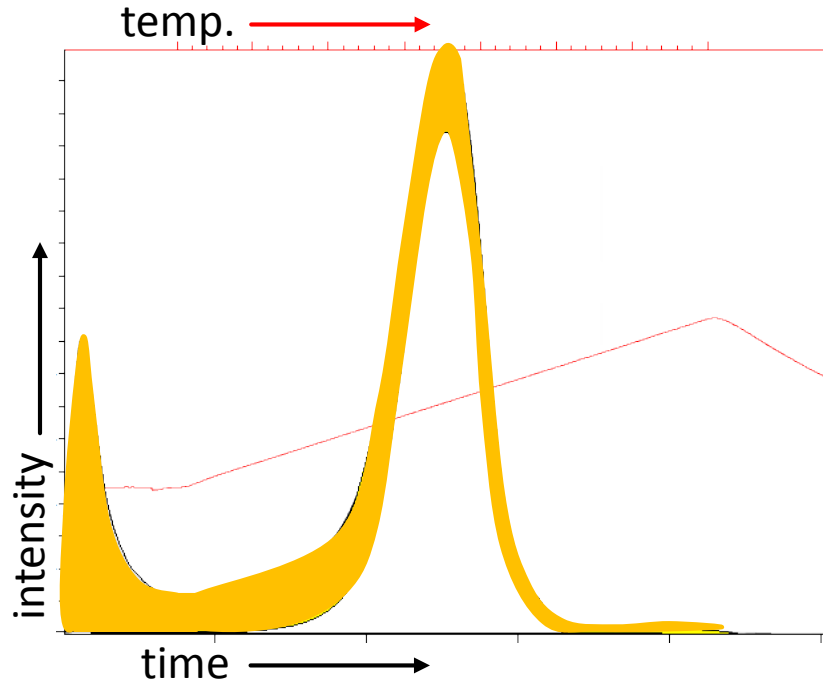
Petroleum Quality (PQ): $S1/S1+S2_{\text{bitumen}}$

Mixed type II/III kerogen

Total Petroleum: $S1+S2_{\text{bitumen}}$

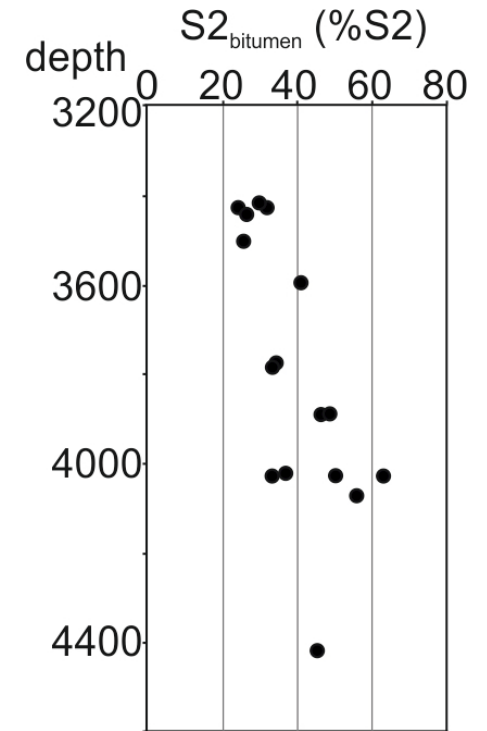
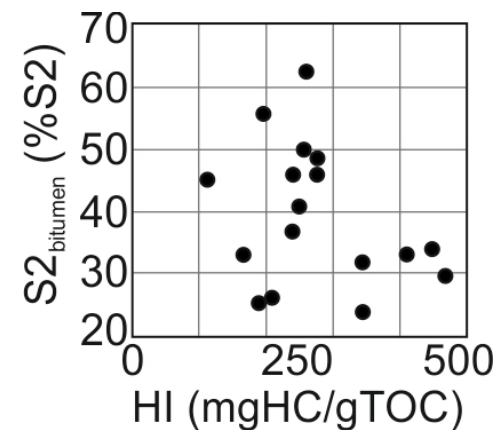
-> 30-60% of S2 peak extractable @ 430-450°C Tmax!

-> Important information on hydrocarbon storage and expulsion efficiency



Ziegs et al., 2017

No correlation!

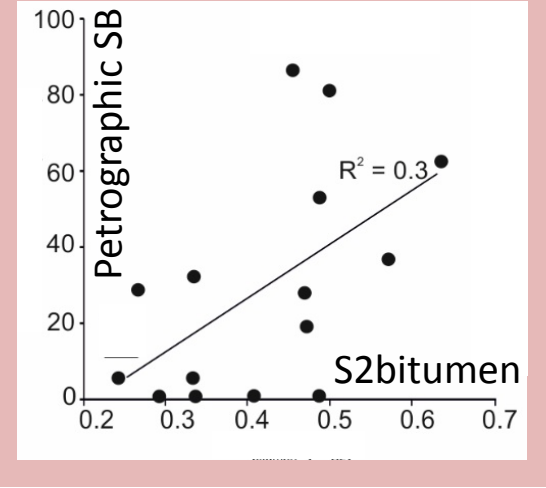
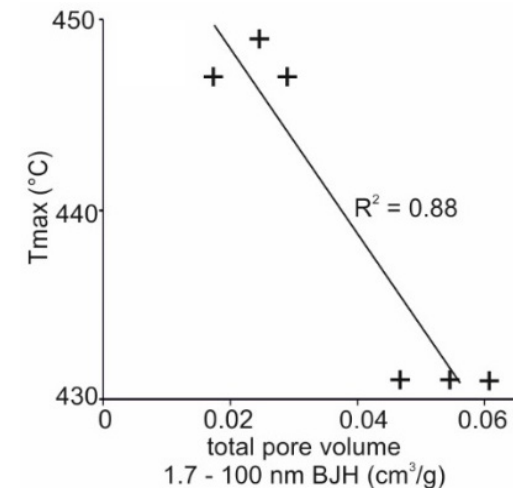
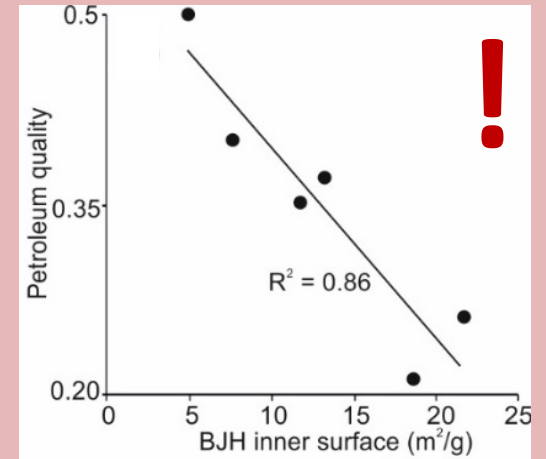
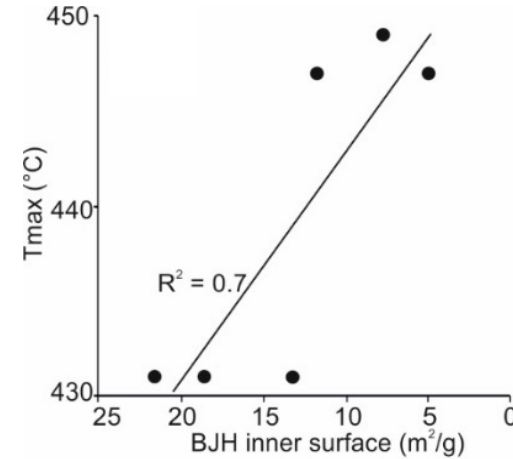
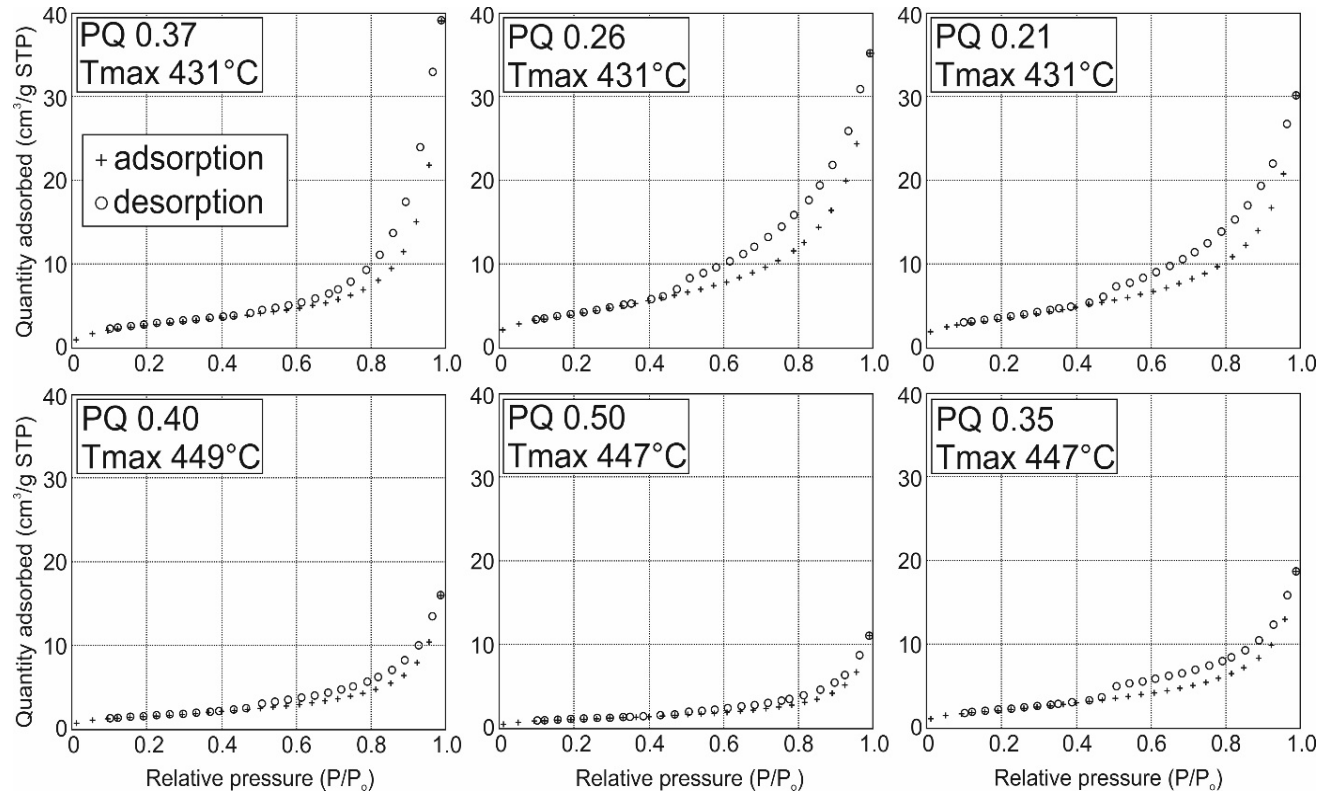


Hydrocarbon retention/expulsion

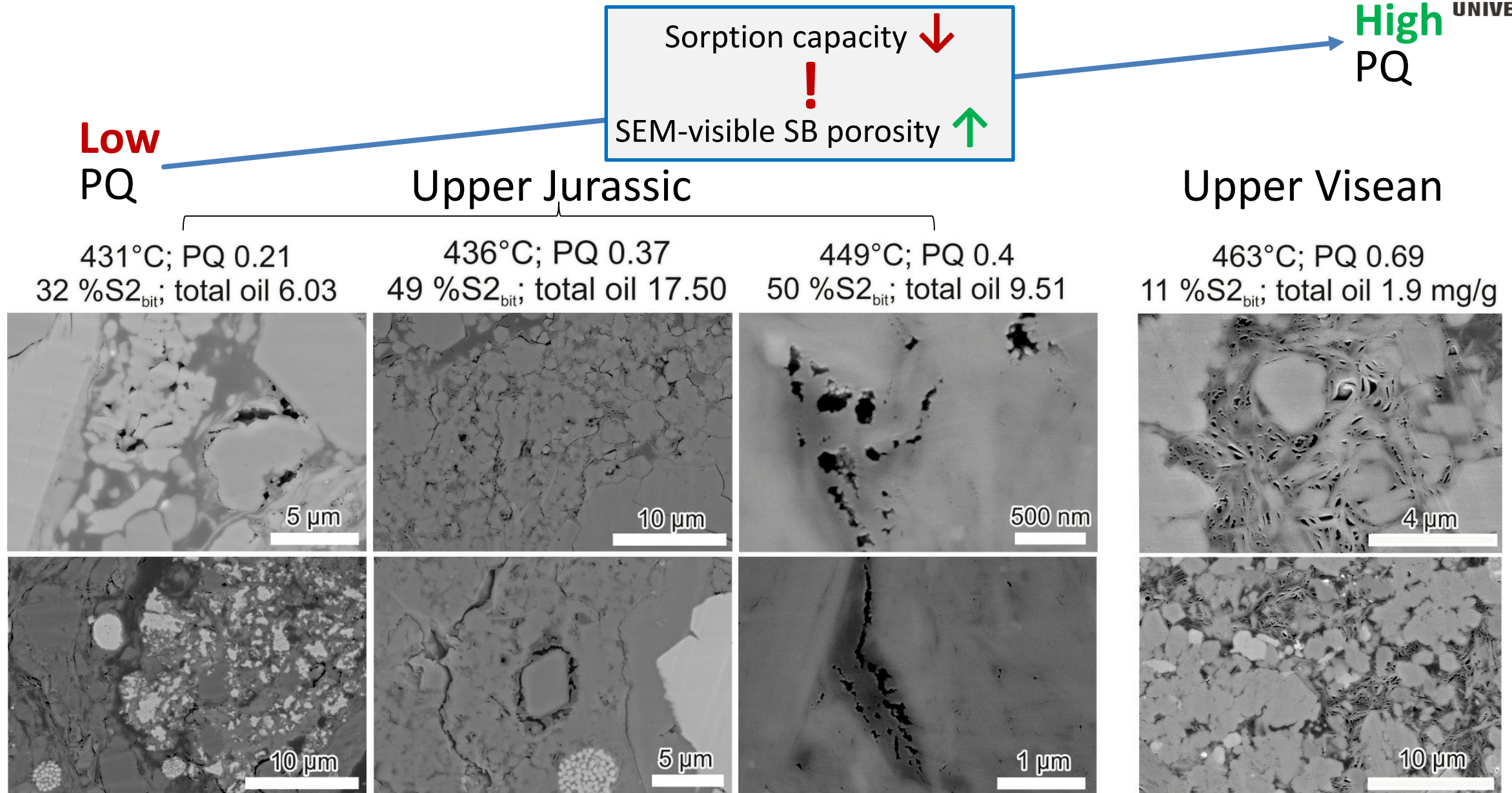
Upper Jurassic Mandal Fm. (Norway)

Petroleum Quality (PQ): $S1/S1+S2_{\text{bitumen}}$

Nitrogen adsorption isotherms

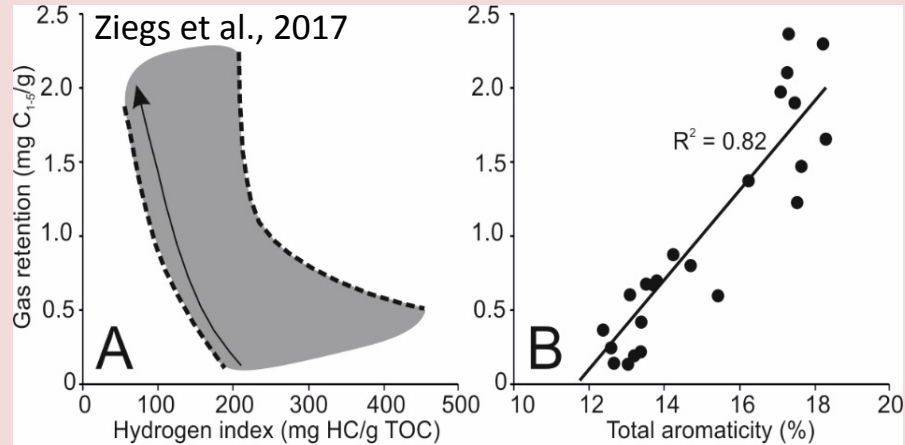


Hydrocarbon retention/expulsion

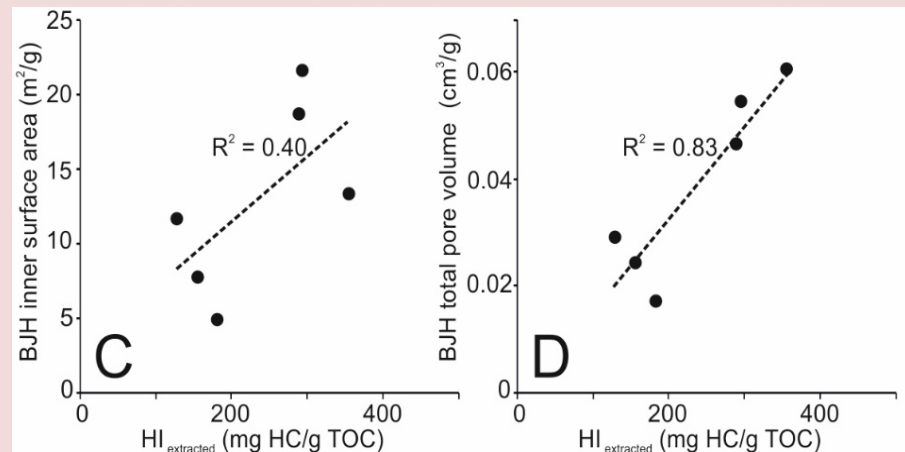


Hydrocarbon retention/expulsion

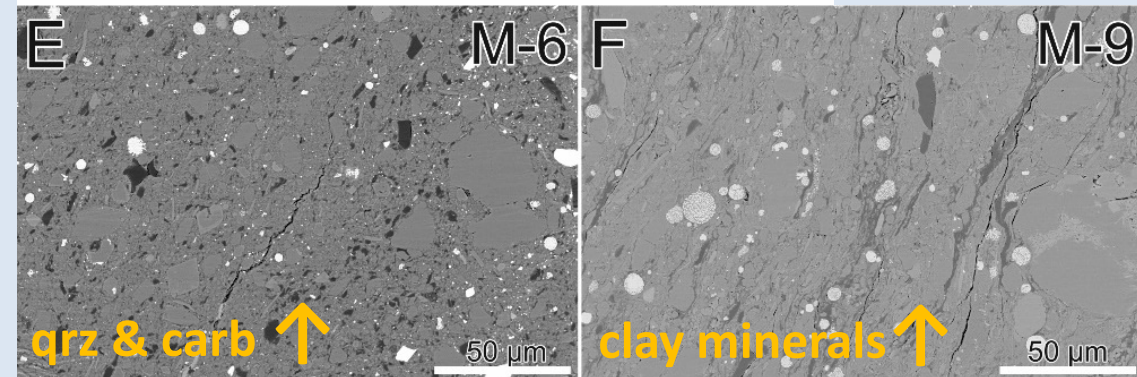
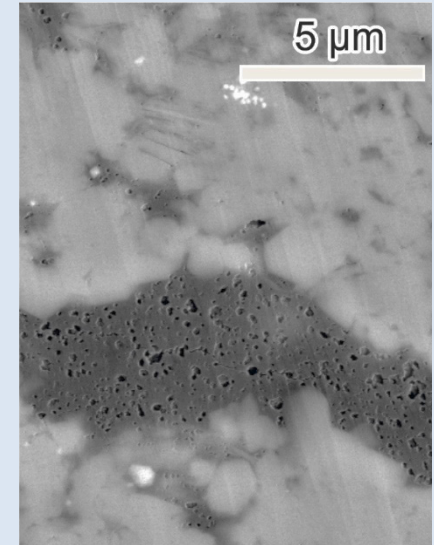
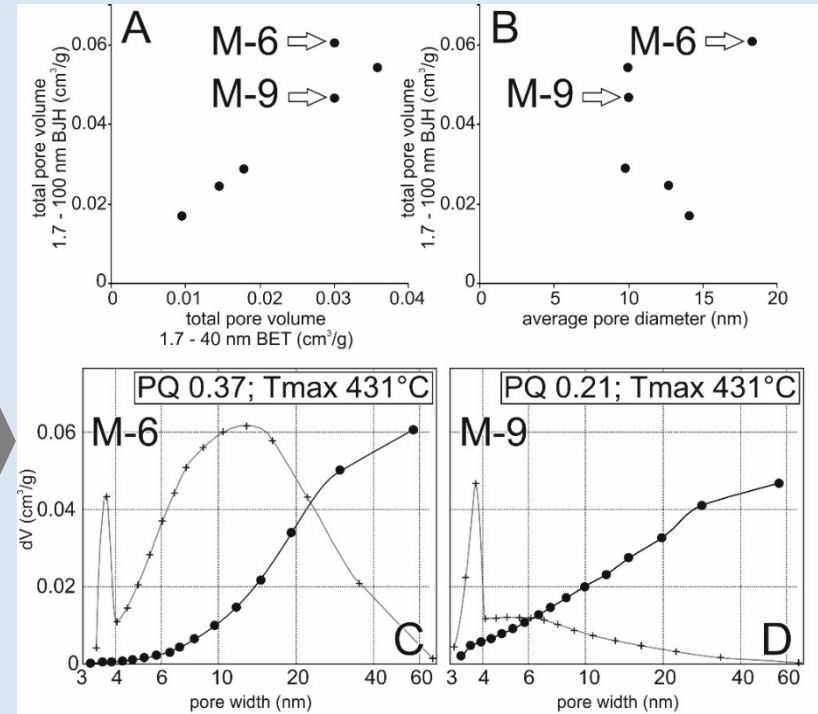
Microporosity (< 2nm) dominated by $S2_{\text{bitumen}}$:



Organofacies & Maturity



Meso- & macroporosity (2-200 nm) controlled by clay (mineralogy) & „SEM-porous“ solid bitumen:

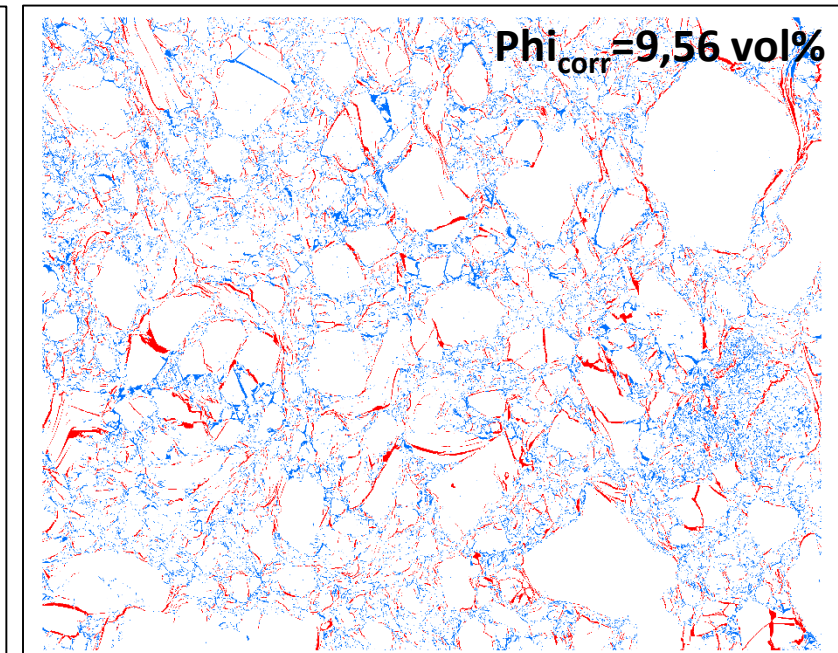
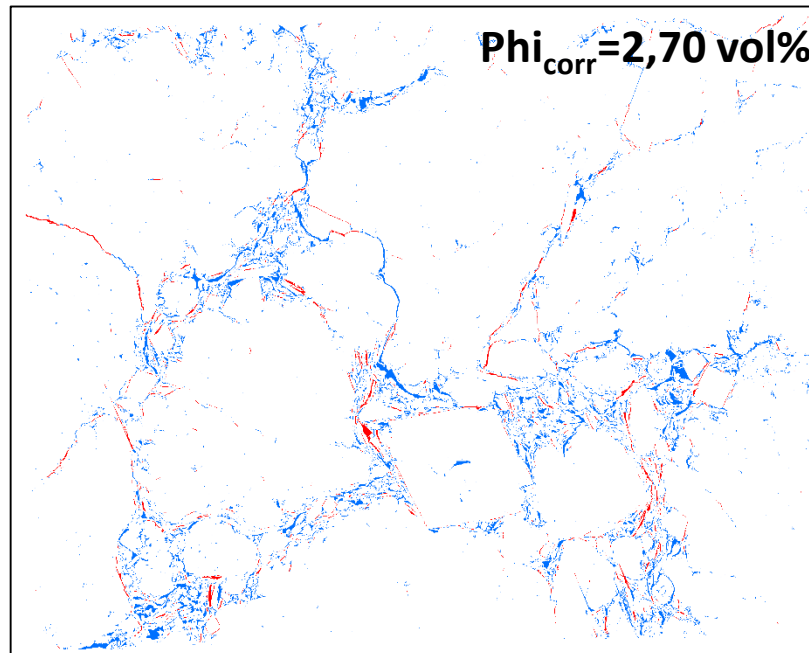
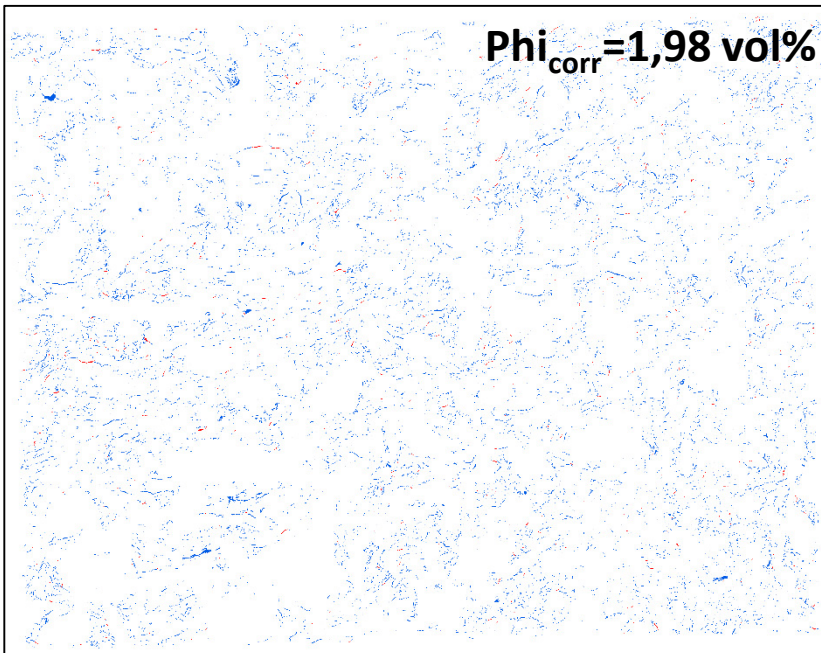
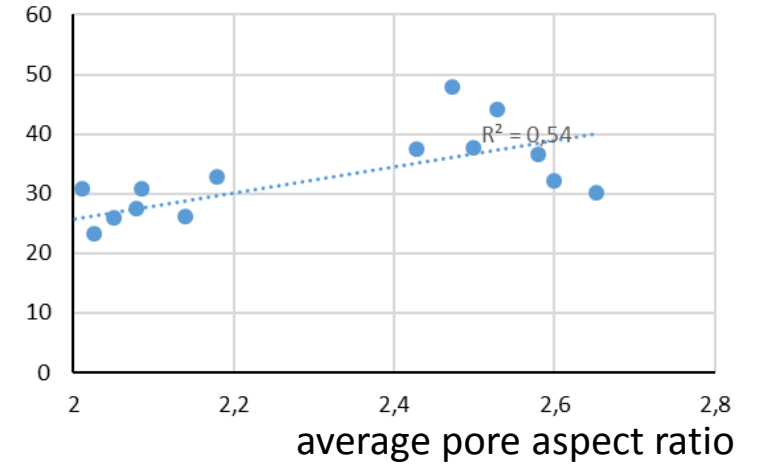
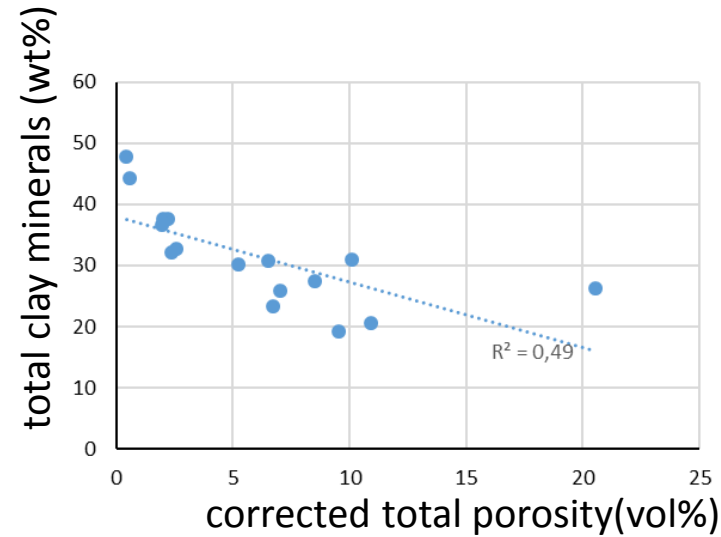


Cap rock integrity: BIB-SEM

Miocene cap rocks (Vienna Basin)

- Pore size distributions
- **Geometry (Area, Perimeter, AR, Circ)**

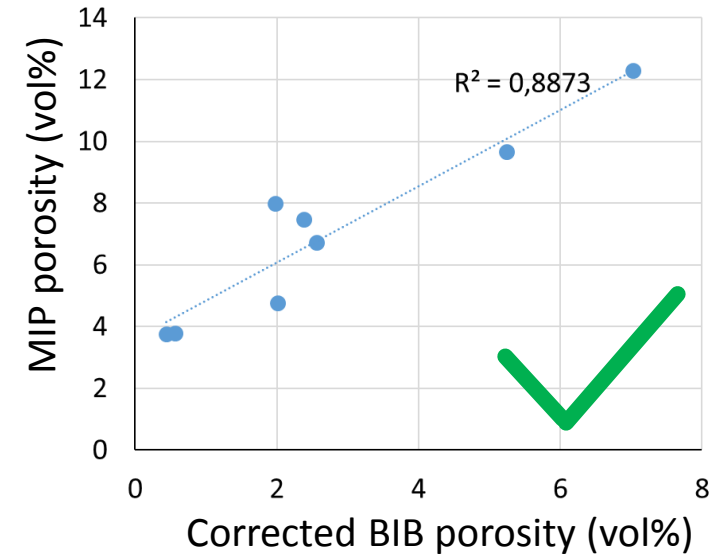
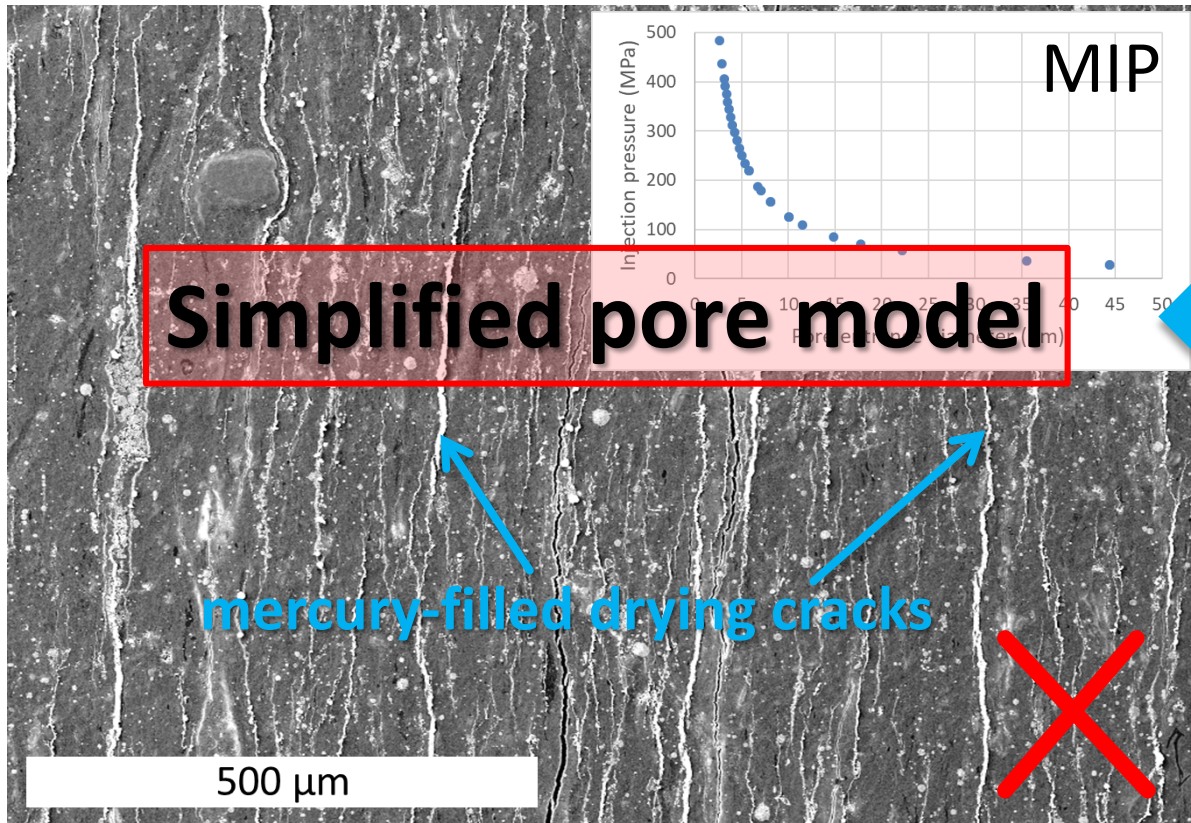
BIB-SEM study to investigate flow paths



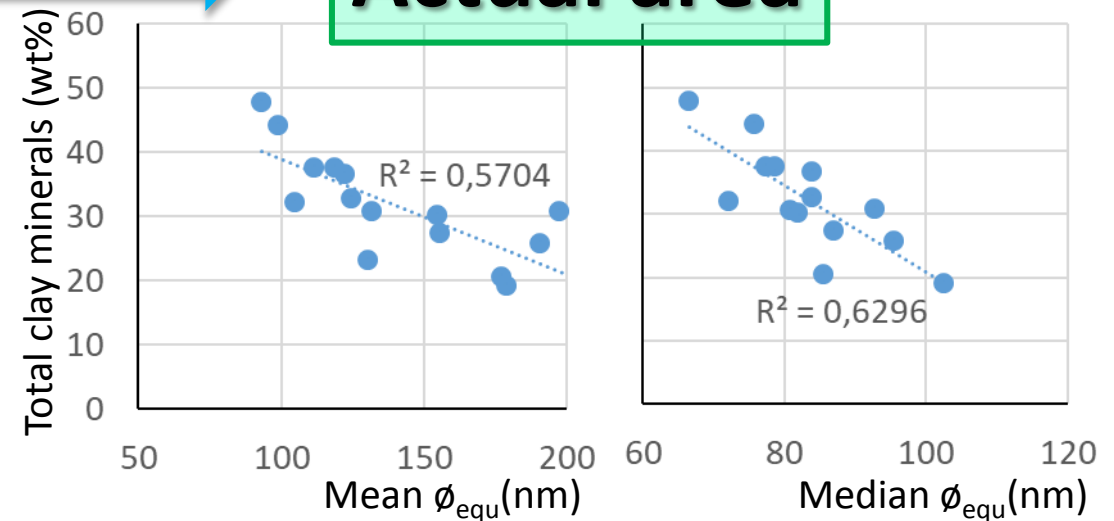
Cap rock integrity: MIP vs. BIB porosity

Miocene cap rocks (Vienna Basin)

-> **Validation** of petrophysical methods
(e.g., **M**ercury **I**ntrusion **P**orosity - MIP)



Actual area



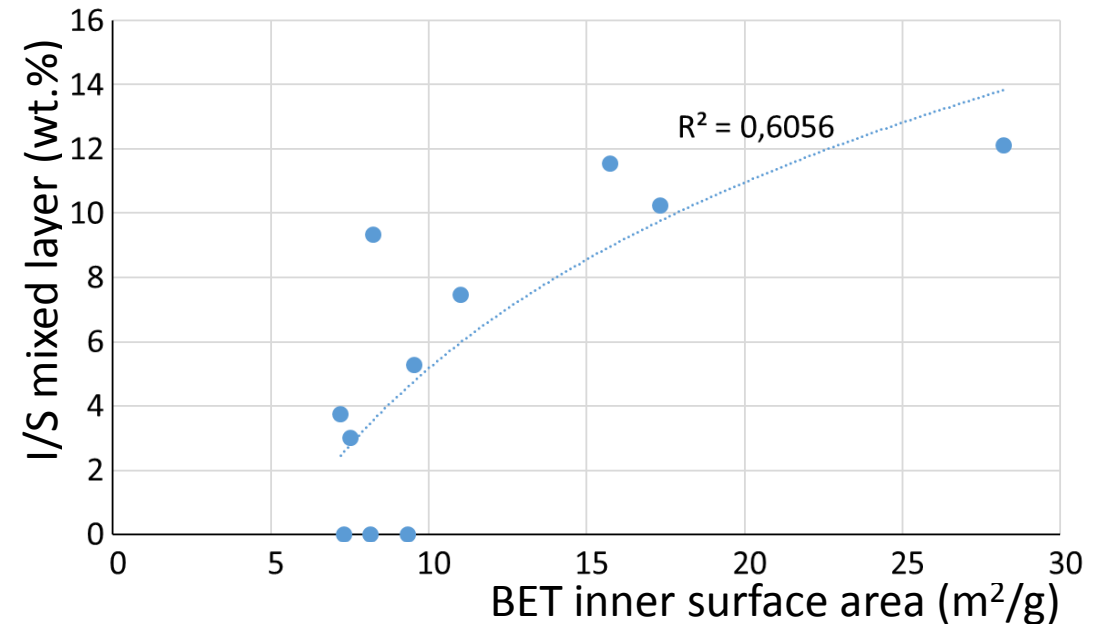
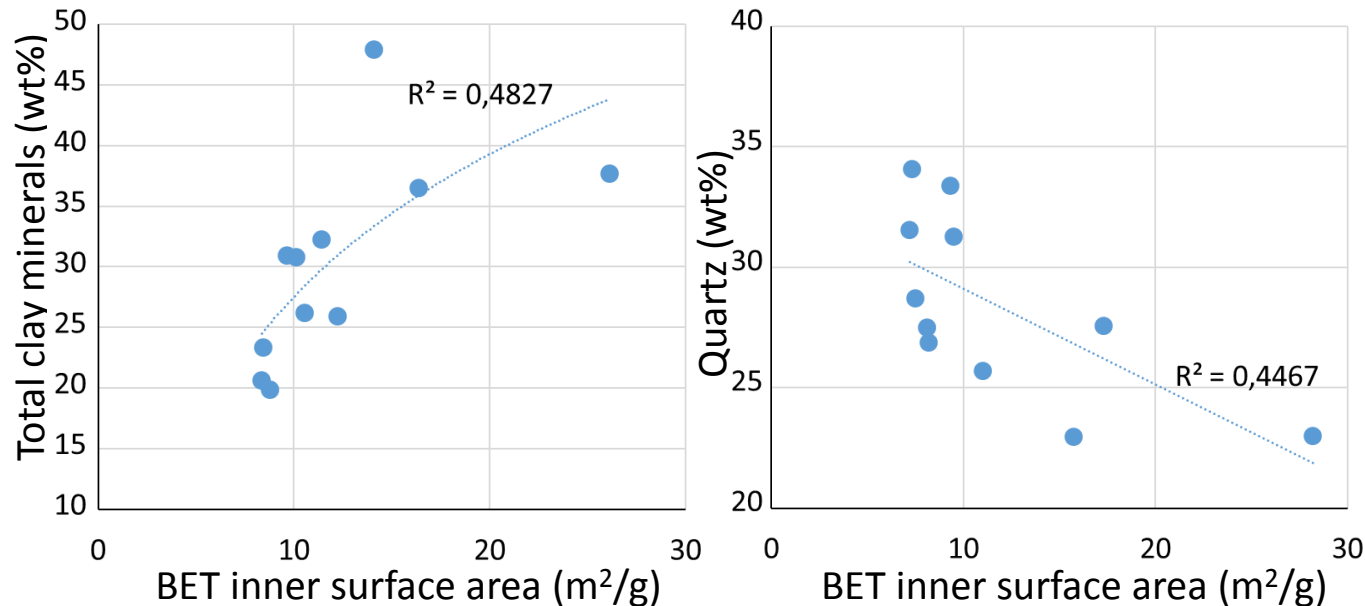
Cap rock integrity: sorption

Miocene cap rocks (Vienna Basin)

Nitrogen adsorption isotherms

-> Trends are also observed in **matrix mesopores**
(BET: 2-40 nm)

-> Influence on **gas retention?**



- Comprehensive understanding of **depositional and diagenetic influences on storage/expulsion**
- Input for **mechanical and transport modelling** of experimentally inaccessible material properties

