

# Albian-Cenomanian Stratigraphy and Petroleum Systems, Eagle Plain Basin, Yukon\*

Kevin W. Jackson<sup>1</sup>, Per Kent Pedersen<sup>1</sup>, and Larry S. Lane<sup>2</sup>

Search and Discovery Article #20241 (2014)

Posted March 31, 2014

\*Adapted from extended abstract prepared in conjunction with presentation at CSPG/CSEG/CWLS GeoConvention 2012, (Vision) Calgary TELUS Convention Centre & ERCB Core Research Centre, Calgary, AB, Canada, 14-18 May 2012, AAPG/CSPG©2014

<sup>1</sup>Geoscience, University of Calgary, Calgary ([kwjackso@ucalgary.ca](mailto:kwjackso@ucalgary.ca))

<sup>2</sup>Geological Survey of Canada, Calgary, Alberta

## Introduction

Eagle Plain is an underexplored basin in northern Yukon with known hydrocarbon potential ([Figure 1](#)). The Mid- to Upper Cretaceous succession underlies the majority of Eagle Plain. The middle to late Albian Parkin Formation and Cenomanian Fishing Branch Formation are the focus of this study ([Figure 2](#)). The Cenomanian Fishing Branch Formation flowed 3300mcf/day of gas from the Chance G-08 well on production test.

## Method

Previous studies of the Cretaceous interval are based on lithostratigraphic principles (i.e., Dixon, 1992b). Recent outcrop study yielded insights that allow for revision of the Middle to Upper Cretaceous stratigraphy, en route to a high-resolution sequence stratigraphic framework for the succession (Jackson et al., 2010). By employing stratigraphic principles with outcrop and core data, sedimentology, petrography, biostratigraphy, and source rock analysis, we present an updated appraisal of the hydrocarbon prospectivity for the basin.

## Discussion

Potential reservoir units in a variety of marine depositional environments are identified in the basal Parkin Sandstone Member, middle Parkin Sandstone Member, and Fishing Branch Formation. Previous exploration efforts in the 1950's and 1960's targeted deeper Paleozoic reservoirs in Laramide-aged structural traps. However, evidence from this study emphasizes the potential for stratigraphic and combined traps. The presence of a significant slope with at least 100m of relief in western Eagle Plain suggests new conceptual play opportunities associated with sand delivery to the shelf edge.

Cretaceous source rocks are rich in woody gas-prone kerogen and are immature in much of Eagle Plain. The presence of oil staining with yellow streaming fluorescence in coarse-grained facies of the basal Parkin Sandstone Member in the North Parkin C-33 well supports potential for lateral and/or vertical migration from deeper Paleozoic source rocks.

### **Conclusions**

Refinement of the stratigraphic framework is important for understanding regional sedimentation patterns, basin morphology, and the distribution of reservoir facies within the Cretaceous strata of Eagle Plain. Very large oil and gas fields have been discovered in comparable stratigraphically confined reservoirs around the world, and they could easily have been overlooked in Eagle Plain, where extensive gaps in well control occur. The Eagle Plain Group represents a prospective shallow target for primarily gas and merits attention for future exploration activity ([Figure 3](#)).

### **Acknowledgements**

Thanks to the Geological Survey of Canada, Natural Resources Canada, and Yukon Geological Survey for financial support and use of their research facilities, and to geoLOGIC Systems Ltd. for contributing software licenses and subsurface data to the University of Calgary.

### **Selected References**

- Dixon, J., 1992a, A Review of Cretaceous and Tertiary Stratigraphy in the Northern Yukon and Adjacent Northwest Territories: Geological Survey of Canada, Paper 92-9, 79 p.
- Dixon, J., 1992b, Stratigraphy of Mesozoic Strata, Eagle Plain Area, Northern Yukon: Geological Survey of Canada, Bulletin 408, 58 p.
- Hadlari, T., D. Thomson, C.J. Schröder-Adams, Y. Lemieux, B.C. MacLean, and L.P. Gal, 2009, Cretaceous strata and basal Cretaceous sandstone play, *in* L.J. Pyle, and A.L. Jones, eds. Regional Geoscience Studies and Petroleum Potential, Peel Plateau and Plain: Project Volume: Northwest Territories Geoscience Office and Yukon Geological Survey. NWT Open File 2009-02 and YGS Open File 2009-25, Chapter 9, p. 410-476.
- Jackson, K., M. McQuilkin, P.K. Pedersen, L.S. Lane, and R. Meyer, R., 2011, Preliminary observations on stratigraphy and hydrocarbon potential of middle to Upper Cretaceous strata, Eagle Plain basin, northern Yukon, *in* K.E. MacFarlane, L.H. Weston, and C. Relf, eds., Yukon Exploration and Geology 2010: Yukon Geological Survey, p. 125-134.
- Jowett, D.M.S., C.J. Schröder-Adams, and D. Leckie, 2007, Sequences in the Sikanni Formation in the frontier Liard Basin of northwestern Canada – evidence for high frequency late Albian relative sea-level changes: *Cretaceous Research*, v. 28, p. 665-695.

Norris, D.K., 1985, Geology of the northern Yukon and northwestern District of Mackenzie: Geological Survey of Canada, Map 1581A, scale 1:500 000.

Petroleum resource assessment of the Liard Plateau, Yukon Territory, Canada: National Energy Board for Energy Resources Branch, 2001, 69 p.

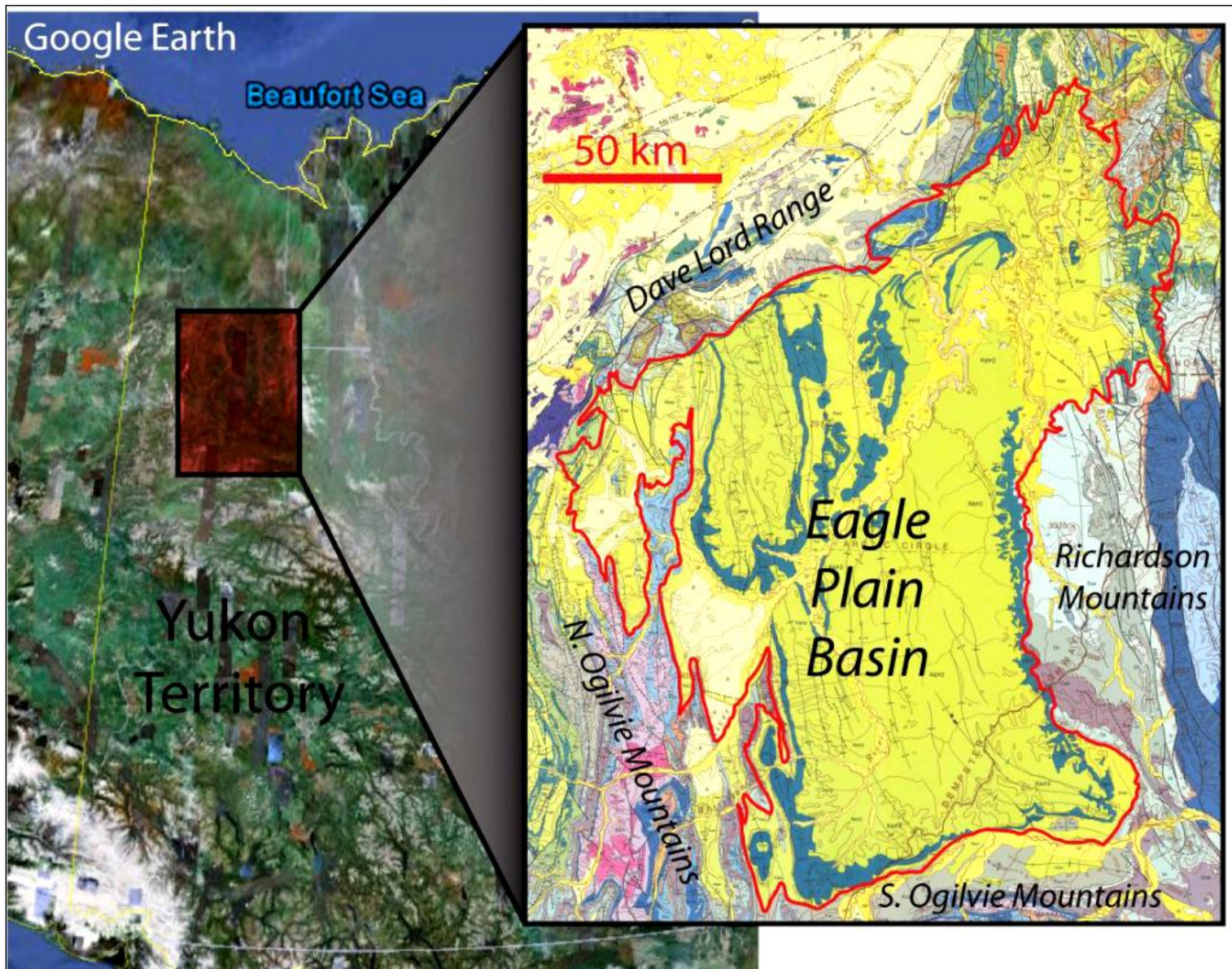


Figure 1: Geological map of northern Yukon Territory, showing location of the Eagle Plain Basin (outlined in red) and major geomorphological elements. Cretaceous bedrock (green and blue-green on map) underlies the majority of Eagle Plain. (Modified from Norris, 1985.)



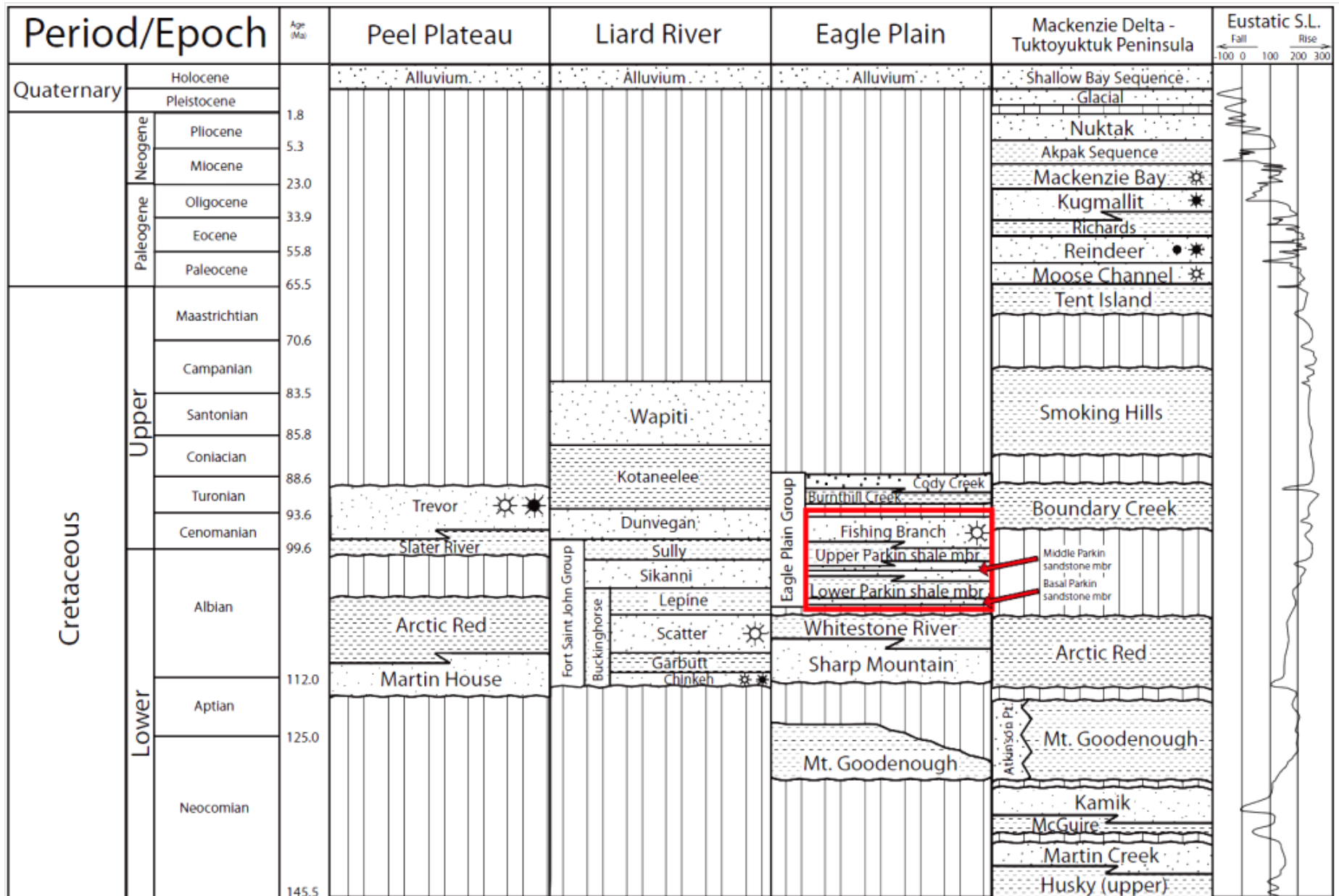


Figure 2: Cretaceous to Recent stratigraphy of Eagle Plain area and other basins of northern Canada. Red box outlines the interval of focus for this study (Compiled from this study, Dixon, 1992a; Hadlari et al., 2009; Jowett et al., 2007).

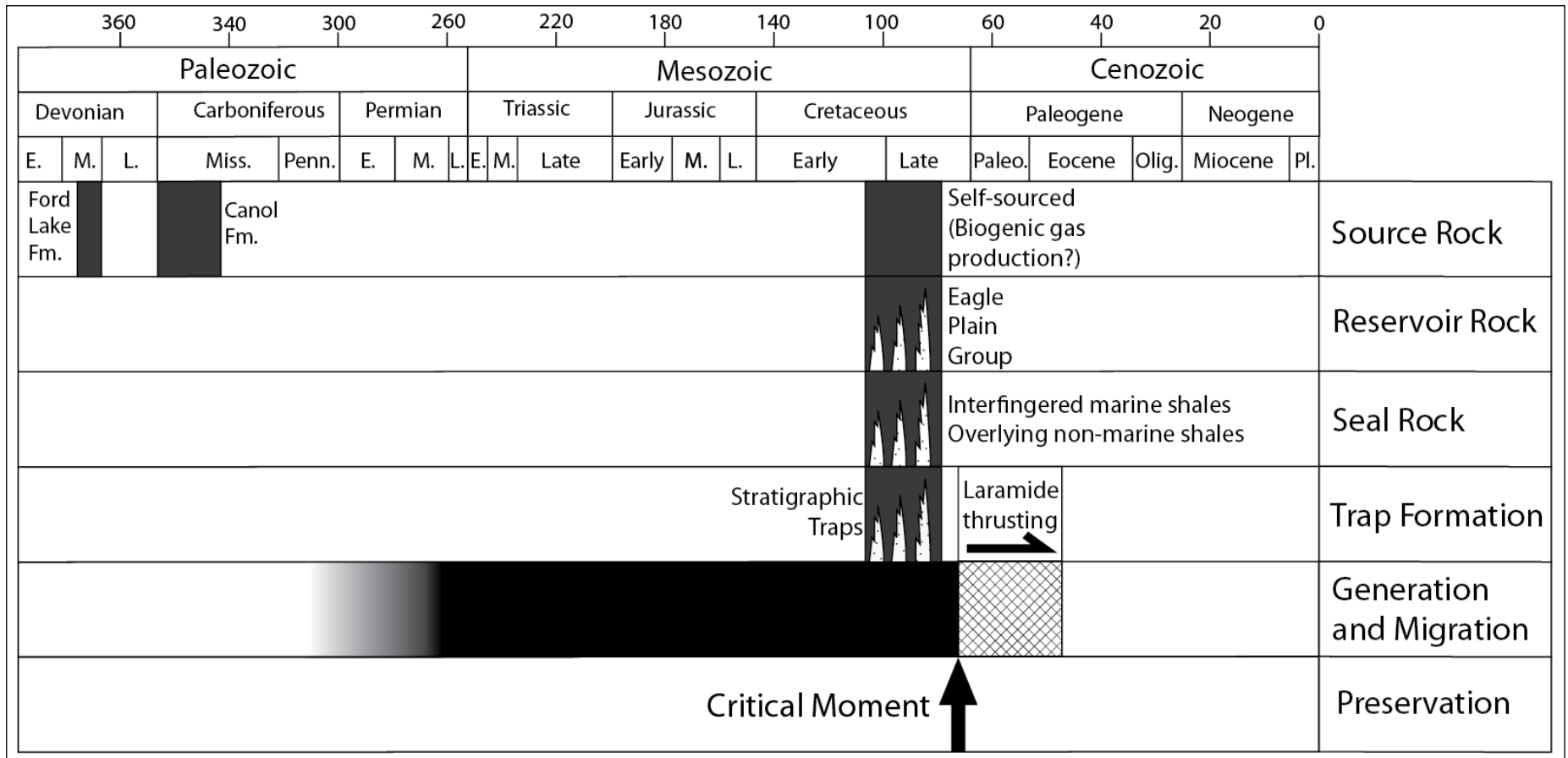


Figure 3: Petroleum systems chart for Mid- to Upper Cretaceous reservoirs in Eagle Plain.