

Figure 6. Typical gas zones are identified from log analysis for the King Christian Formation of Heiberg Group, exhibiting excellent porosity and permeability, and high hydrocarbon saturation, in the Drake gas field and Hecla gas field of the Western Sverdrup Basin.

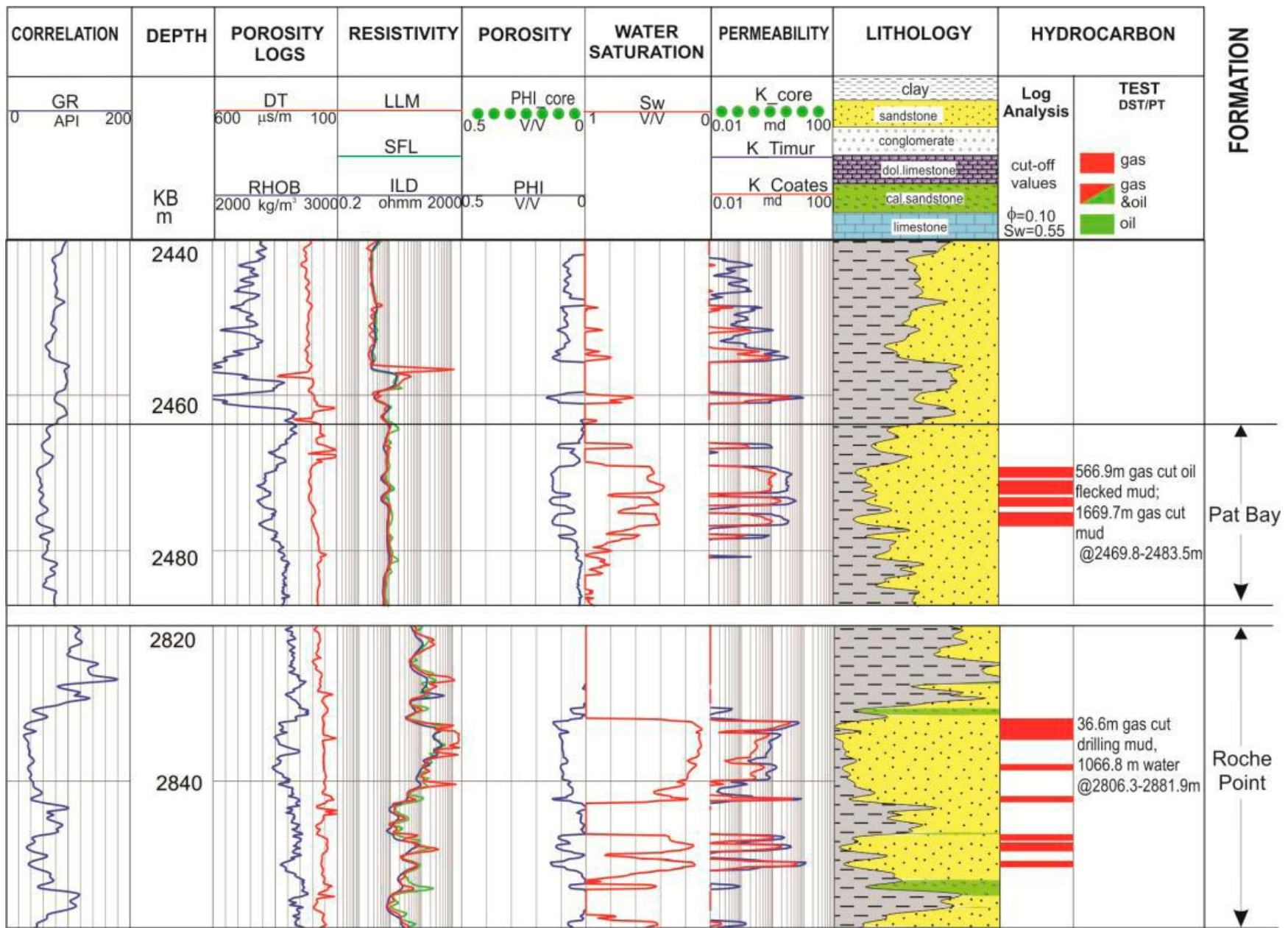


Figure 7. Example to show the petrophysical properties and identified hydrocarbon zones for the Pat Bay Formation and Roche Point Formation of Schei Point Group in Roche Point O-43 well of the Western Sverdrup Basin.