

Fluvial-Tidal Sandbody Relationships in the “Nonmarine” Iles Formation near Rangely, Colorado*

Jeffrey A. Thompson¹ and Donna S. Anderson¹

Search and Discovery Article #50470 (2011)

Posted September 12, 2011

*Adapted from oral presentation at AAPG Rocky Mountain Section meeting, Cheyenne, Wyoming, USA, June 25-29, 2011

¹Department of Geology and Geological Engineering, Colorado School of Mines, Golden, CO (jeffathomp@gmail.com)

Abstract

Tidal influence has been rarely reported in the geologic literature in the nonmarine portions of the Upper Mesaverde Group in the Piceance and Uinta basins. However, a detailed field study of the nonmarine Iles Formation north of Rangely, CO, finds a number of tidal indicators, including paleocurrents in the landward direction, mud drapes and double mud drapes, and sigmoidal cross-stratification. Tidal influence is strong within the field area despite its location 60 to 70 km to the closest transgression of the Iles shoreline. Tidal units in the field area occur in six sandbody types: tidal bars, tidally influenced channel fills, fill-and-spill channels, tidally influenced splays, tidal constructional bars, and tidally influenced braided complexes. Fluvially dominated sandbody units are also present within the field area, including point bars, fluvial channel fills, fluvial constructional bars, and minor crevasse splays and channels.

A cyclical pattern of tidal influence is observed in the field area. The lower portion of the field area is strongly tidally dominated. Tidal influence decreases upwards with the middle portion of the field area exhibiting fluvial dominance. The upper portion of the field area shows evidence of increasing tidal influence. This cycle is linked to the migration of relative sea level. Multiple cycles of mudstone to sandstone dominance are also observed within the field area. These cycles occurred on a shorter time scale and represent the migration of the main channel belt in and out of the area. Strata in the field area are correlated into the Cozzette and Rollins members based on the cycles of tidal influence, amalgamation of sandstone units, and evidence of lengthy subaerial exposure.

Selected References

Anderson, D.S., 2005, Architecture of crevasse splay and point-bar bodies of the nonmarine Iles Formation north of Rangely, Colorado: implications for reservoir description: *The Mountain Geologist*, v. 42/3, p. 109-122.

Brownfield, M. E., L.N.R. Roberts, E.A. Johnson, and T.J. Mercier, 2000, Chapter N: Assessment of the distribution and resources in the Deserado Coal Area, Lower White River Coal Field, northwest Colorado. in M.A. Kirschbaum, L.N.R. Roberts, and L.R.H. Biewick, editors, *Geologic Assessment of Coal in the Colorado Plateau: Arizona, Colorado, New Mexico, and Utah*: U.S. Geological Survey Professional Paper 1625-B. 25 p.

Garrigues, R.S., and Barnum, B.E., 1980, Geologic map and coal sections of the Rangely NE quadrangle, Rio Blanco and Moffat Counties, Colorado: U.S. Geological Survey Open-File Report OF-80-274, scale 1:24,000.

Gomez-Veroiza, C.A., and R.J. Steel, 2010, Iles clastic wedge development and sediment partitioning within a 300-km fluvial to marine Campanian transect (3 m.y.), Western Interior Seaway, southwestern Wyoming and northern Colorado: AAPG Bulletin, v. 94/9, p. 1349-1377.

Green, G.N., 1992, Digital geologic map of Colorado: U.S. Geological Survey Open-File Report OF-92-0425, scale 1:500,000.

Hettinger, R.D., and M.A. Kirschbaum, 2002, Stratigraphy of the Upper Cretaceous Mancos Shale (upper part) and Mesaverde Group in the southern part of the Piceance and Uinta Basins, Colorado and Utah: U.S. Geological Survey Geologic Investigations Series I-2764, 21 p., 2 pls.

Sprinkel, D.A., M.P. Weiss, R.W. Fleming, and G.L. Waanders, 1999, Redefining the Lower Cretaceous stratigraphy within the central Utah foreland basin: Utah Geological Survey Special Study 97, 21 p.

Wray, L., A.D. Apeland, H. Hemborg, B. Thomas, A. Cheryl, M.L. Morgan, and G.B.C. Young, 2005, Shapefiles for the 2002 oil and gas fields map of Colorado: Colorado Geological Survey, Open-File Report 05-9, CD-ROM.

A photograph of a desert landscape. In the foreground, there is a dirt path leading through sparse vegetation, including a large, dark, leafy shrub on the right and several smaller, spindly bushes on the left. The ground is sandy and rocky. In the background, there are rolling hills and mountains under a clear blue sky. The text is overlaid on the upper right portion of the image.

Fluvial – Tidal Sandbody Relationships in the “Nonmarine” Iles Formation near Rangely, CO

Jeffrey A. Thompson & Donna S. Anderson
Rocky Mt Section AAPG
June 29, 2011

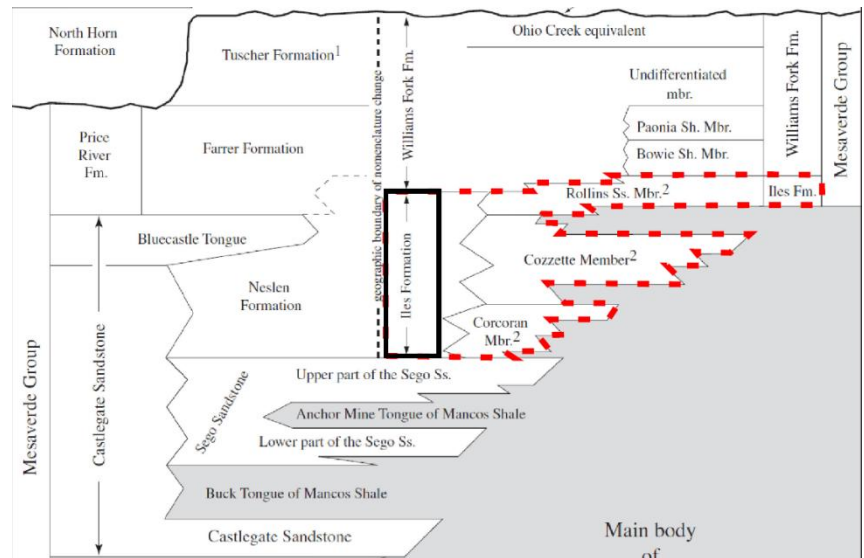
Objectives

- ▶ What types of sandbodies are present within the field area?
- ▶ How do they vary in geometry and facies architecture?
- ▶ How did the depositional environment change over time?
 - ▶ Signs of tidal influence?
- ▶ What are sequence stratigraphic implications?
 - ▶ Correlation with marine members of the Iles Formation?



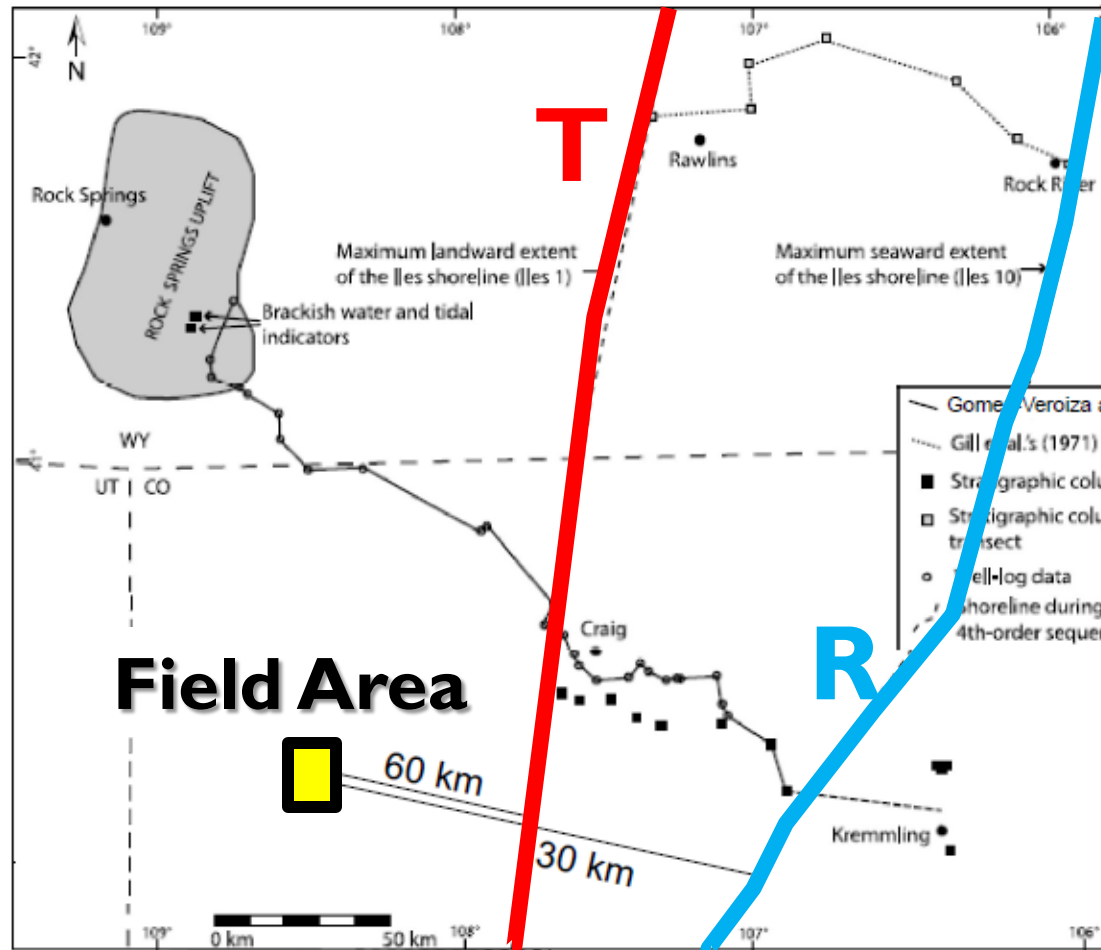
Iles Formation

- ▶ Late Campanian (76-70 Ma)
- ▶ Mesaverde Group
 - ▶ Above Sego Sandstone
 - ▶ Below Williams Fork Formation
- ▶ Three members (marine shoreface units)
 - ▶ Corcoran (lower)
 - ▶ Cozzette (middle)
 - ▶ Rollins (upper)
- ▶ Near Rangely (this study)
 - ▶ Lower Unit
 - ▶ Coal Unit
 - ▶ Main Coal Zone (middle)
 - ▶ Upper Unit
 - ▶ Described as “nonmarine”



From Hettinger and Kirschbaum (2002)

Iles Formation Shorelines

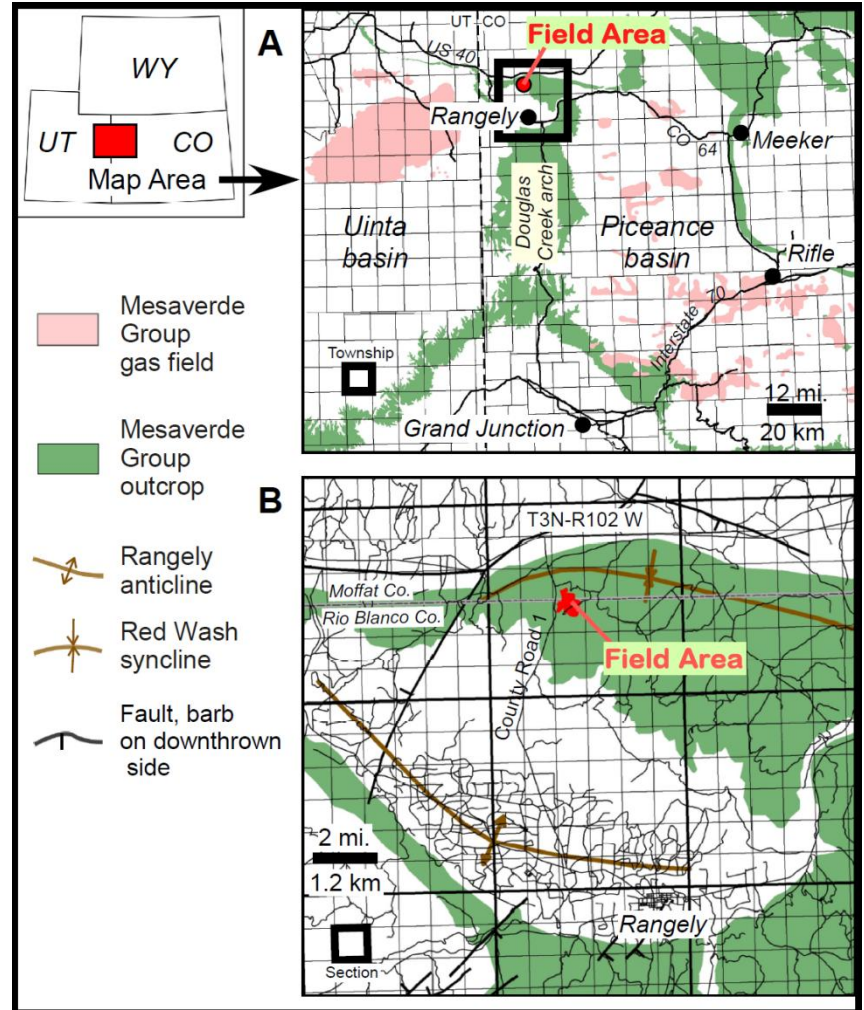


Study Area is 60 to 130 km NNW of Projected **Max Transgressive** and **Max Regressive** Iles Shorelines, Respectively

Modified from Gomez-Veroiza and Steel (2010)

Regional Location of Field Area

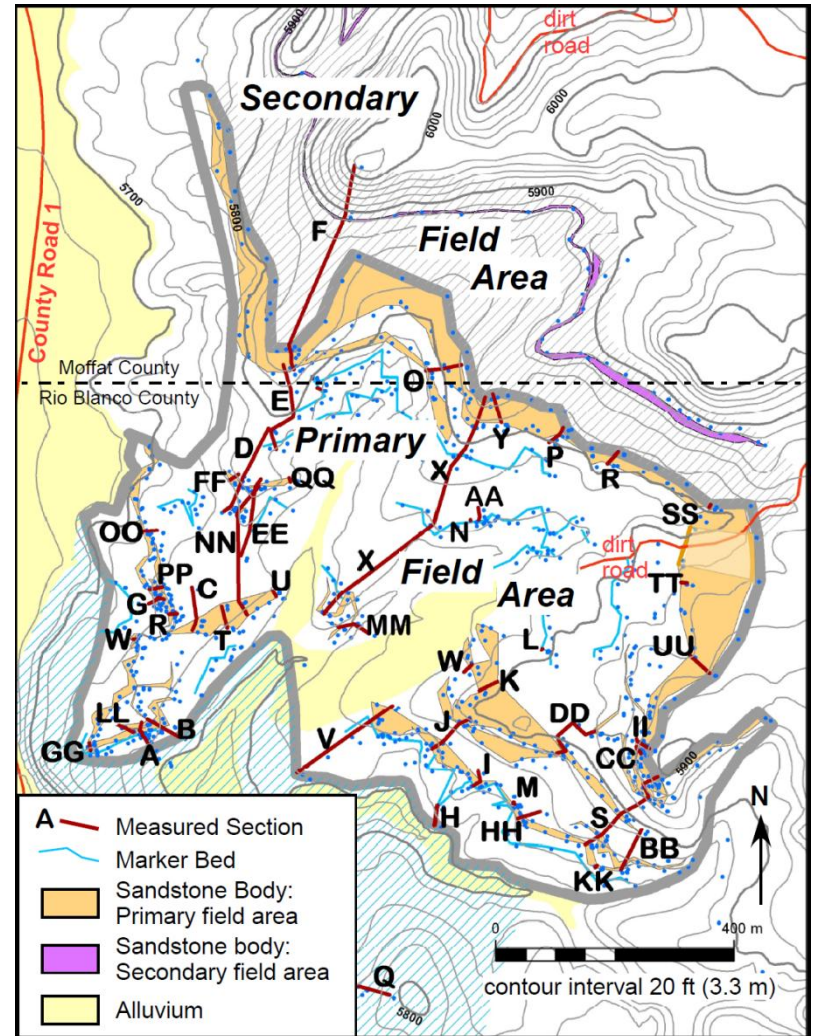
- ▶ Northwest Colorado
 - ▶ 13 km north of Rangely
- ▶ North of Douglas Creek Arch
- ▶ North flank of Rangely Anticline, south flank of Red Wash Syncline



Modified from Green (1992), Sprinkel (1999) and Wray et al. (2005)

Field Area Detail

- ▶ ~1 sq. km
- ▶ ~97 m stratigraphic thickness
 - ▶ Above area studied by Anderson (2005)
- ▶ Lower ~50 m
 - ▶ 8 major sandbodies
 - ▶ 23 subbodies
 - ▶ 11 thin sandstone units
- ▶ Structural dips of 3° NNE

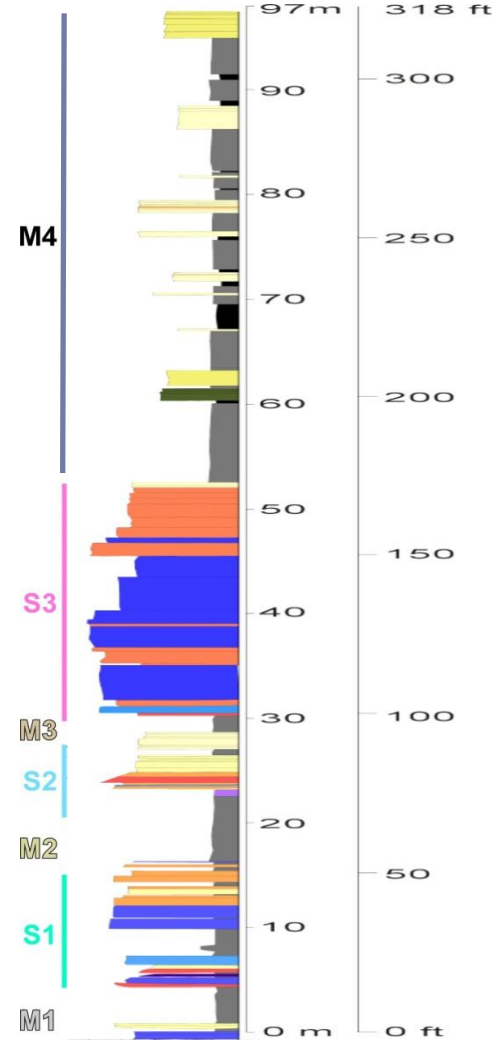
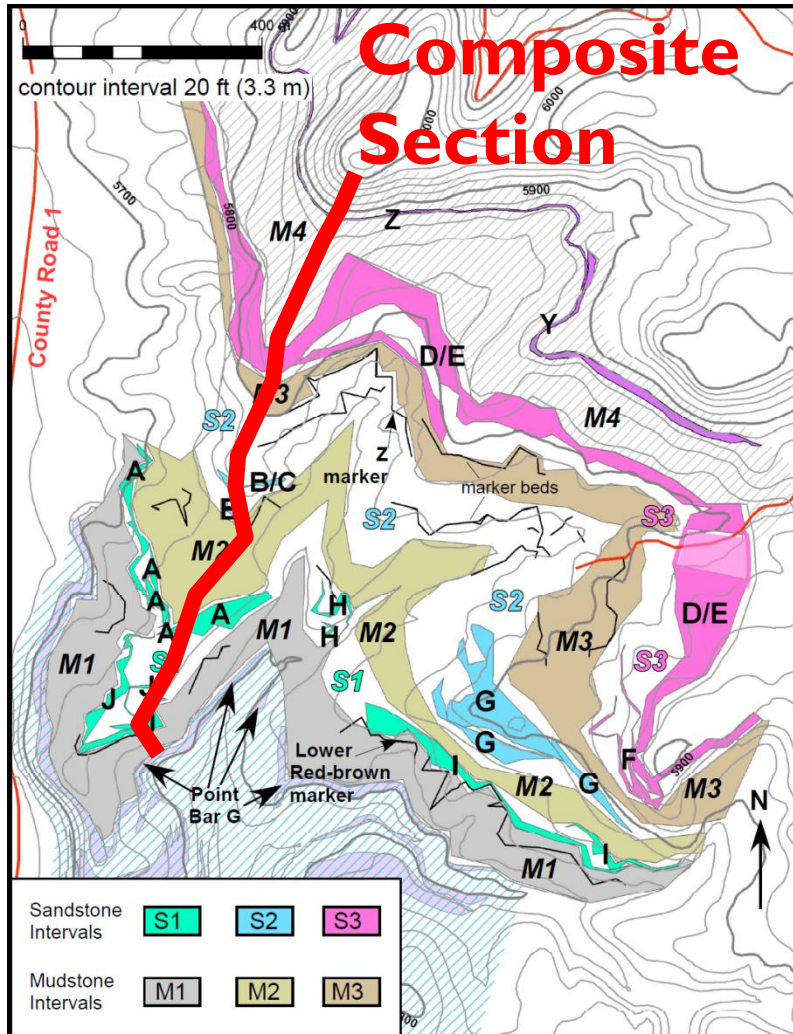


Methods

- ▶ GPS Mapping
 - ▶ 1:500 scale in 1 km²
 - ▶ >900 waypoints on contacts, marker beds, fossil localities
 - ▶ ArcGIS on DEM
- ▶ 48 measured sections
 - ▶ 1:20 scale
 - ▶ 16 Lithofacies (emphasized sandstone)
- ▶ 10x V.E. Cross-sections
 - ▶ Maps of facies architecture for 8 major and 11 minor sandbodies
 - ▶ Calculated facies proportions for each body



Stratigraphic Intervals



3 Sandstone-rich Intervals containing major sandbodies, Separated BY: 4 Mudstone-rich Intervals: Lower 3 lack Coal, Upper (M4) is coal-rich Capped at top by “coal marker sandstones” correlated to base of Williams Fork by Brownfield et al., 2000

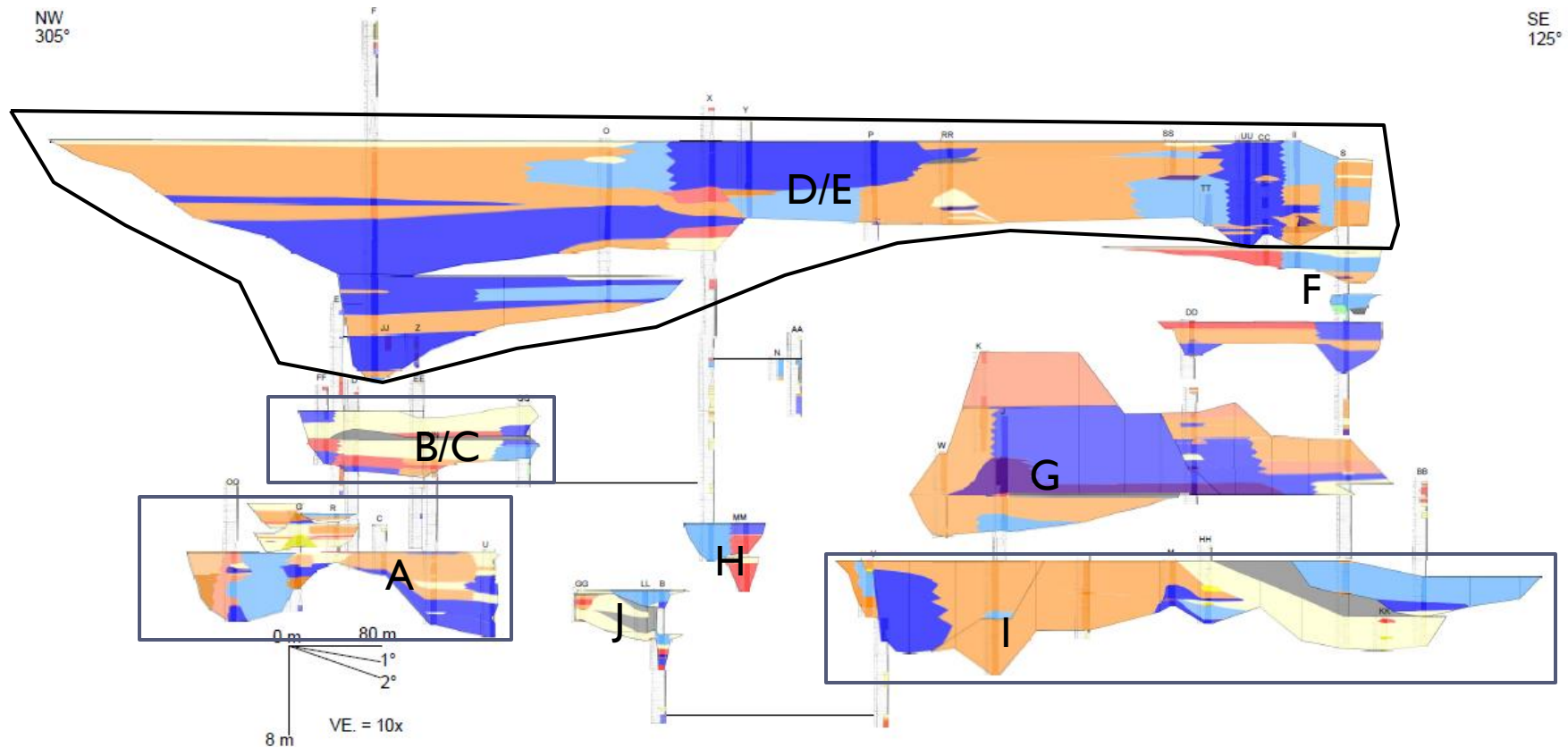
Facies

Color	Facies Name	Characteristics	Interpretation	Facies Association
	Coal	organic material from terrestrial plants	floodplain lake/marsh	Floodplain
	Organic-rich mudstone	organic-rich mud, plant fragments and root traces	shallow floodplain lake/marsh	Floodplain
→	Undifferentiated mudstone	mud and silt sized grains, plant and vertebrate fossils common	overbank and abandonment deposits	Floodplain, Channelbelt
	Root-trace dominated sandstone	abundant root traces, lower very fine to lower fine sand	highly rooted, bioturbation index 5	Floodplain
	Bioturbated sandstone	vertical and horizontal burrows, upper very fine sand	highly burrowed, bioturbation index 3-4	Floodplain
	Wave-rippled sandstone	symmetrical ripples, vertical burrows, medium very fine sand	wave ripples in floodplain lake	Floodplain
	Mud-draped current-rippled sandstone	mud-draped, sigmoid shape ripples, upper fine to lower medium sand	tidally modified low velocity traction flow	Channelbelt
→	Current-rippled sandstone	current ripples, lower very fine to lower medium sand	low energy traction flow	Floodplain, Channelbelt
	Climbing-rippled sandstone	climbing ripples, upper very fine to upper fine sand	low energy traction flow with high deposition rate	Channelbelt
→	Mud-draped planar tabular cross-stratified sandstone	mud-draped, planar tabular cross-strata, lower fine to lower medium sand	moderately high velocity traction flow with periodic hiatuses	Floodplain, Channelbelt
	Sigmoidal cross-stratified sandstone	35 cm thick sigmoidal cross-sets, lower fine sand	moderately high velocity traction flow with subordinate current direction	Channelbelt
→	Convolute sandstone	convolute laminations, upper very fine to lower medium sand	post-depositional liquification	Floodplain, Channelbelt
→	Structureless sandstone	no sedimentary structures, lower very fine to lower medium sand	post-depositional liquification	Floodplain, Channelbelt
→	Planar tabular cross-stratified sandstone	10 to 90 cm thick planar tabular cross-sets, lower very fine to lower medium sand	moderately high velocity traction flow	Floodplain, Channelbelt
→	Trough cross-stratified sandstone	5 to 35 cm thick trough cross-sets, upper very fine to lower medium sand	high velocity traction flow	Floodplain, Channelbelt
→	Mud-clast conglomerate	pebble to lower boulder mud clasts in very fine to fine sand matrix	very high energy traction flow (units with boulder sized clasts- bank collapse)	Channelbelt

Low energy

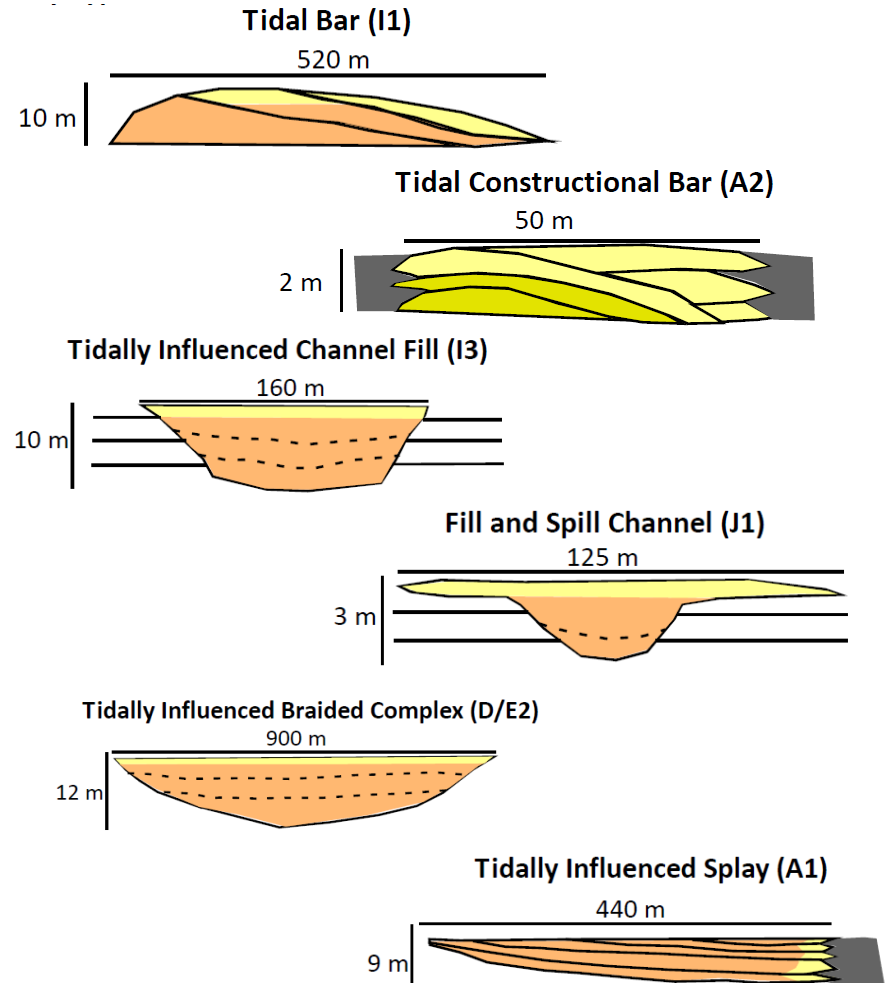
High energy

Sandbodies: Tidal & Fluvial Recognized



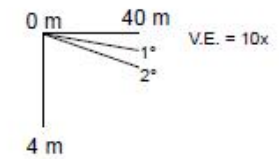
Tidally Influenced Sandbody Types

- ▶ Tidal Bars
 - ▶ 3 (Subbodies I1, I2, and J2)
- ▶ Tidal Constructional Bar
 - ▶ 1 (Subbody A2)
- ▶ Tidally Influenced Channels
 - ▶ 2 (Subbodies I3 and D/E1)
- ▶ Fill-and-Spill Channels
 - ▶ 2 (Subbodies J1 and J3)
- ▶ Tidally Influenced Braided Complex
 - ▶ 1 (Subbody D/E2)
- ▶ Tidally Influenced Splay
 - ▶ 1 (Subbody A1)

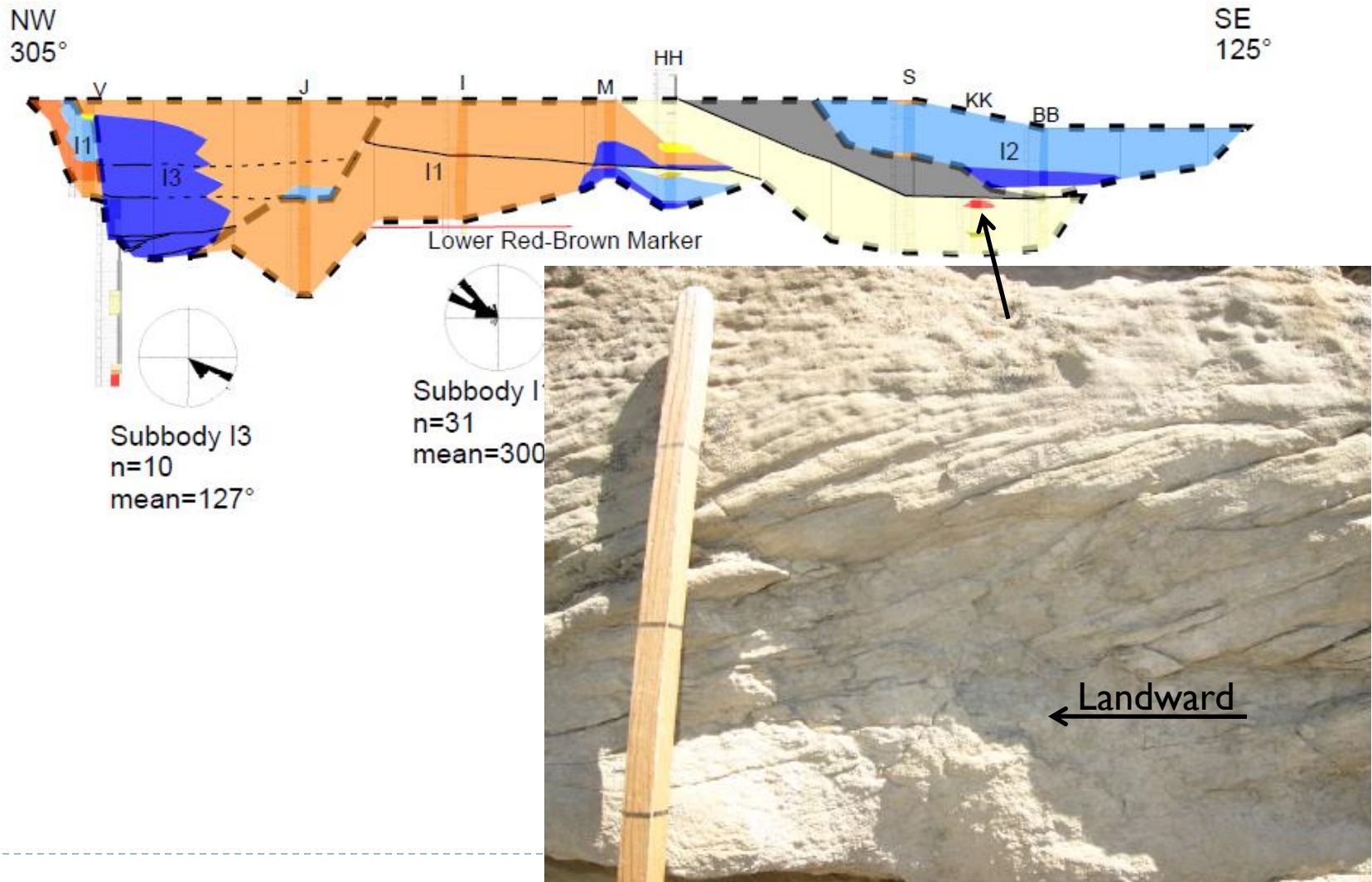




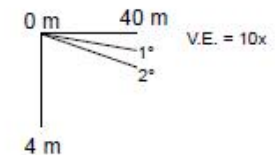
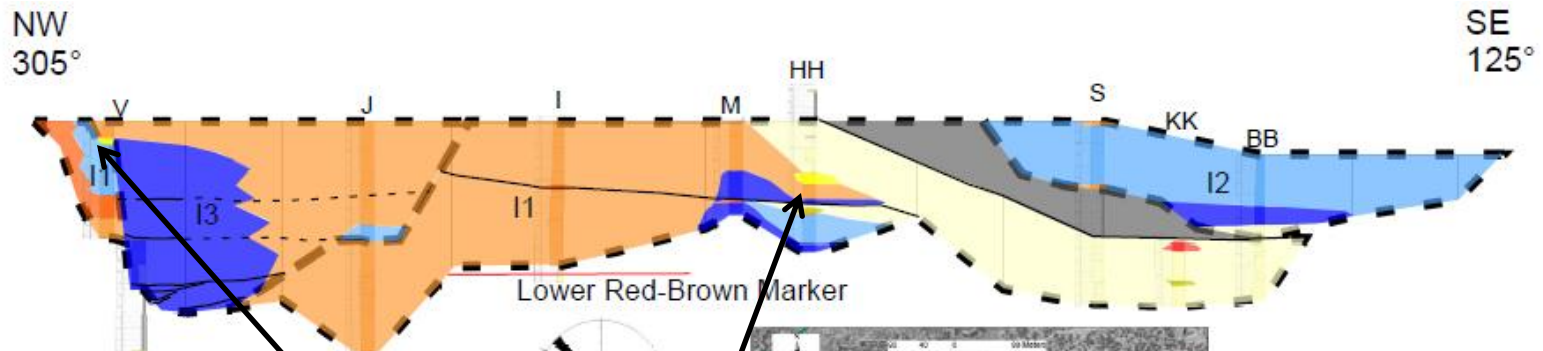
-



Sandbody I [S1 Interval] (Tidal bars/Tidally Influenced Channel Fill)



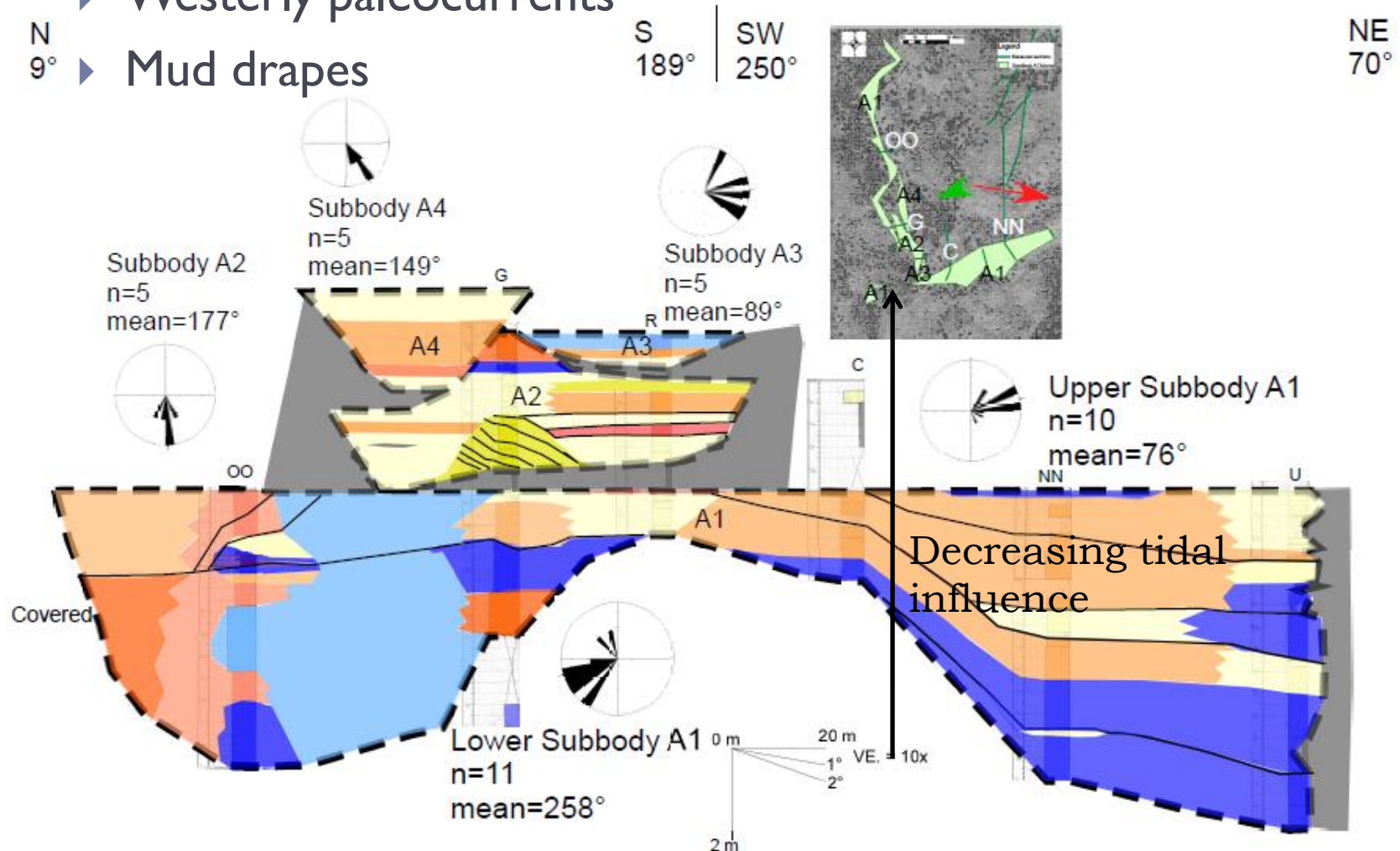
Sandbody I [S1 Interval] (Tidal bars/Tidally Influenced Channel Fill)



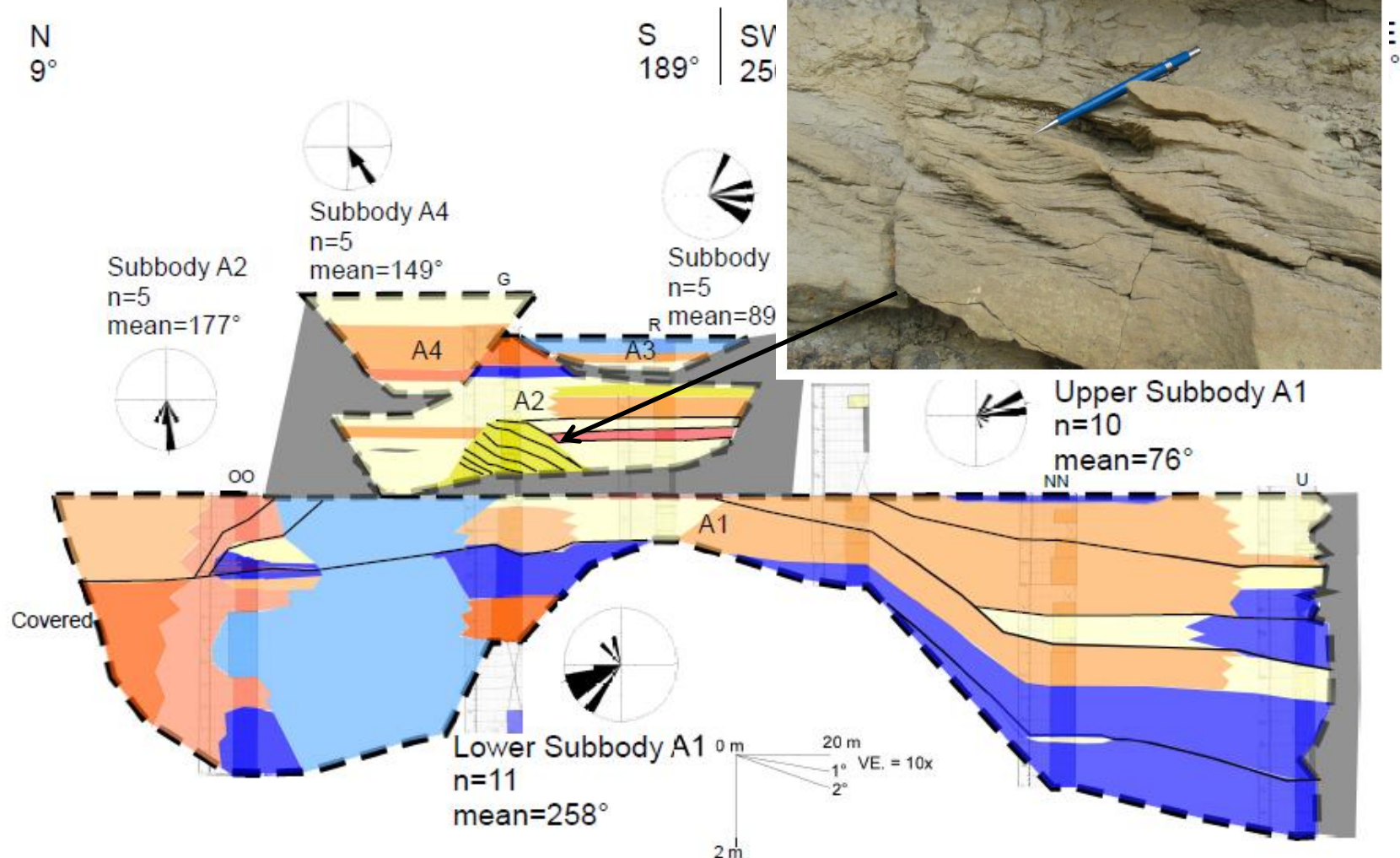
Sandbody A [S1 Interval] (Tidally Influenced Splay/Tidal Constructional Bar/Fluvial Channel Fills)

▶ Westerly paleocurrents

N 9°
▶ Mud drapes



Sandbody A [S1 Interval] (Tidally Influenced Splay/Tidal Constructional Bar/Fluvial Channel Fills)



Fluvially Dominated Sandbody Types

▶ Fluvial Constructional Bars

- ▶ 4 (Subbodies G2, G3, G4, and B)

▶ Point Bars

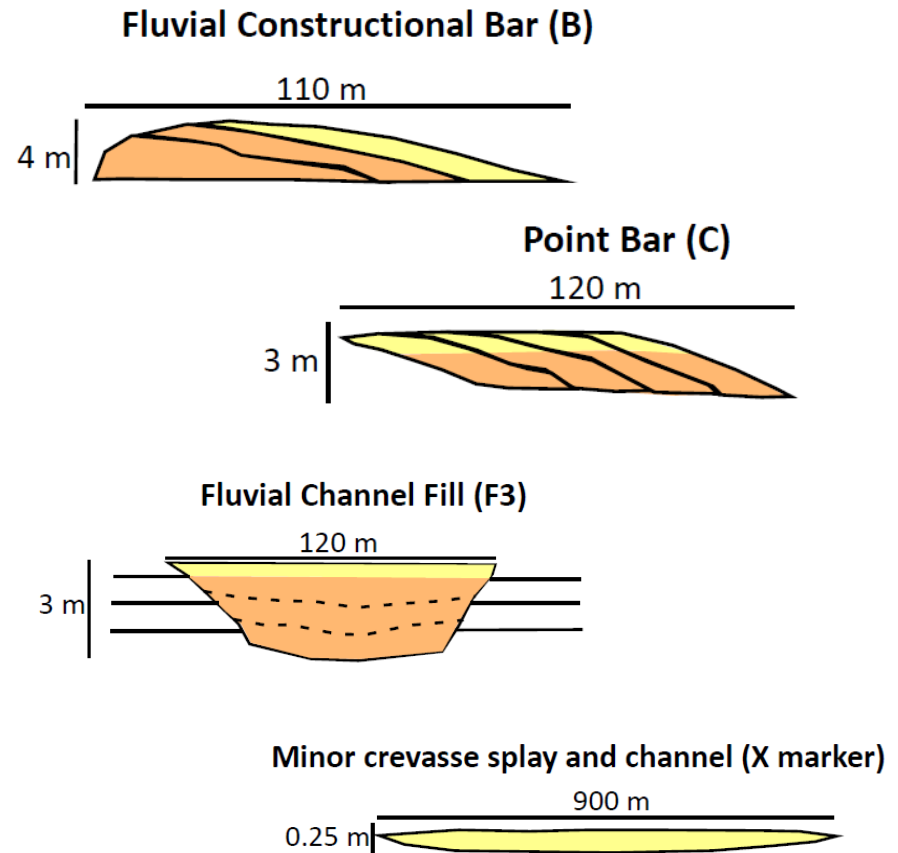
- ▶ I (Subbody C)

▶ Fluvial Channel Fills

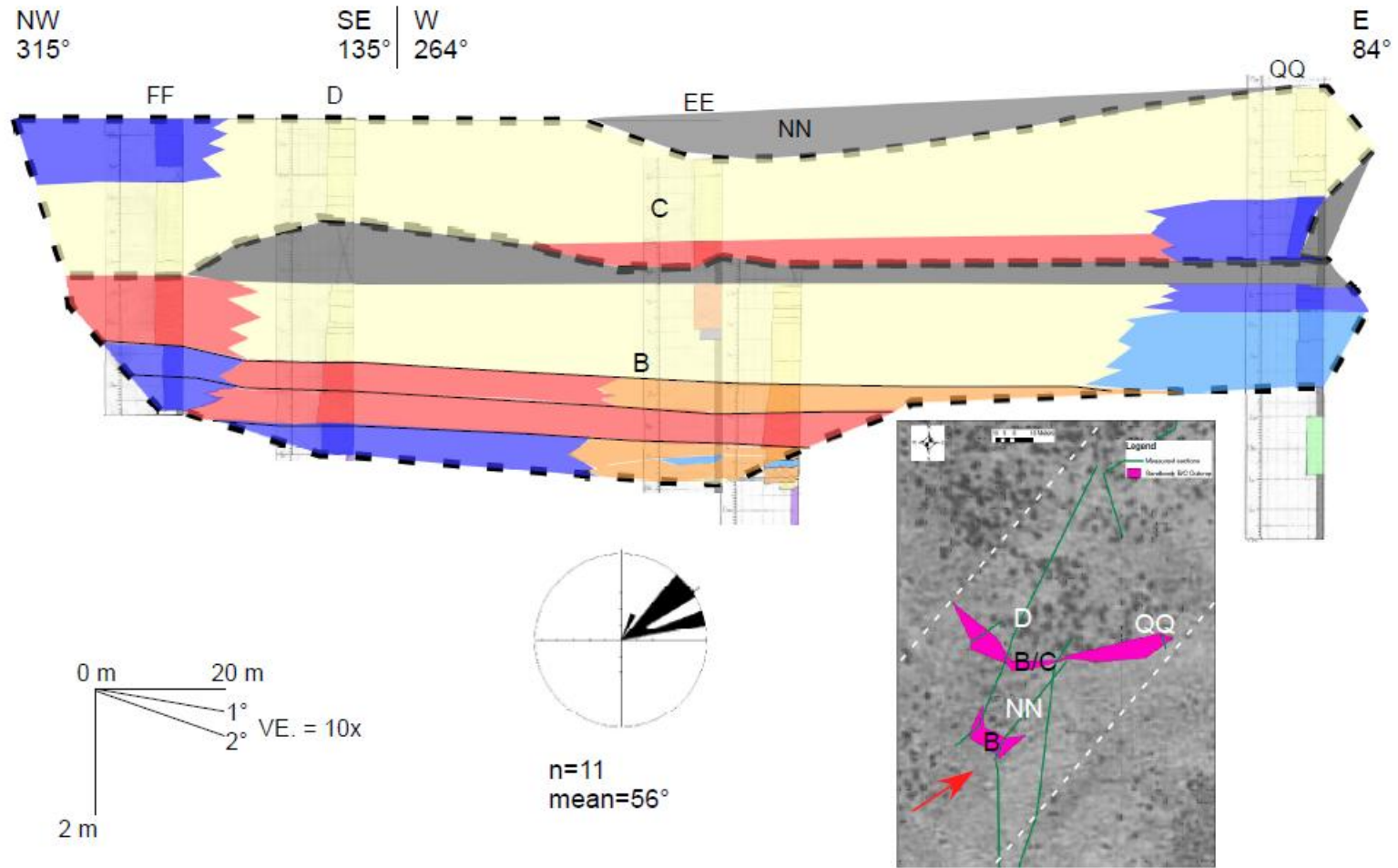
- ▶ 8 (Subbodies A3, A4, H1, H2, G1, F1, F2, and F3)

▶ Minor Crevasse Splays and Channels

- ▶ II (Minor Sandbodies)



Sandbody B/C [S2 Interval] (Fluvial Constructional Bar/ Point Bar)



Sandbody D/E [S3 Interval] (Tidally Influenced Channel Fill/Tidally Influenced Braided Complex)

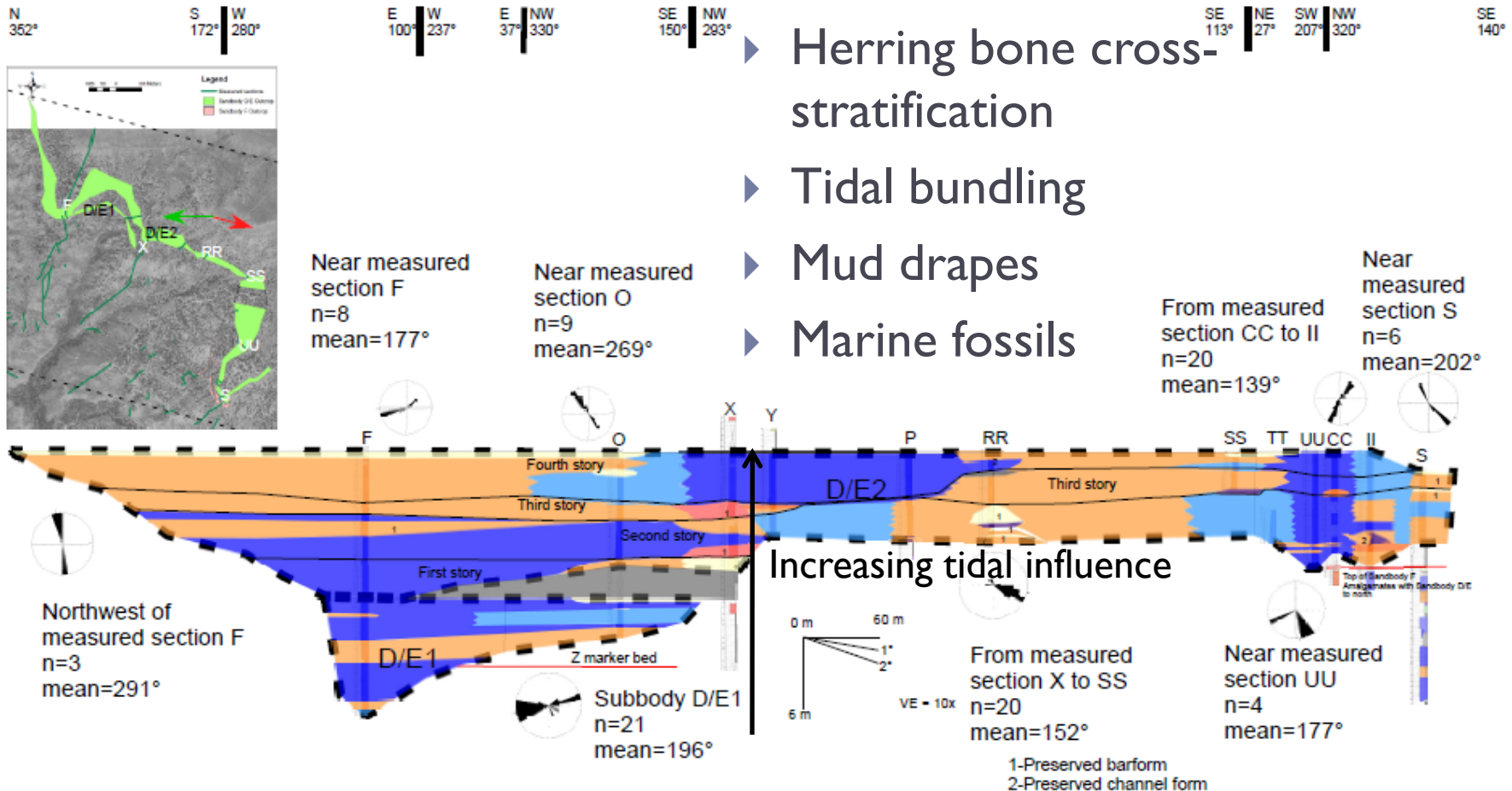
► Westerly paleocurrents

► Herring bone cross-stratification

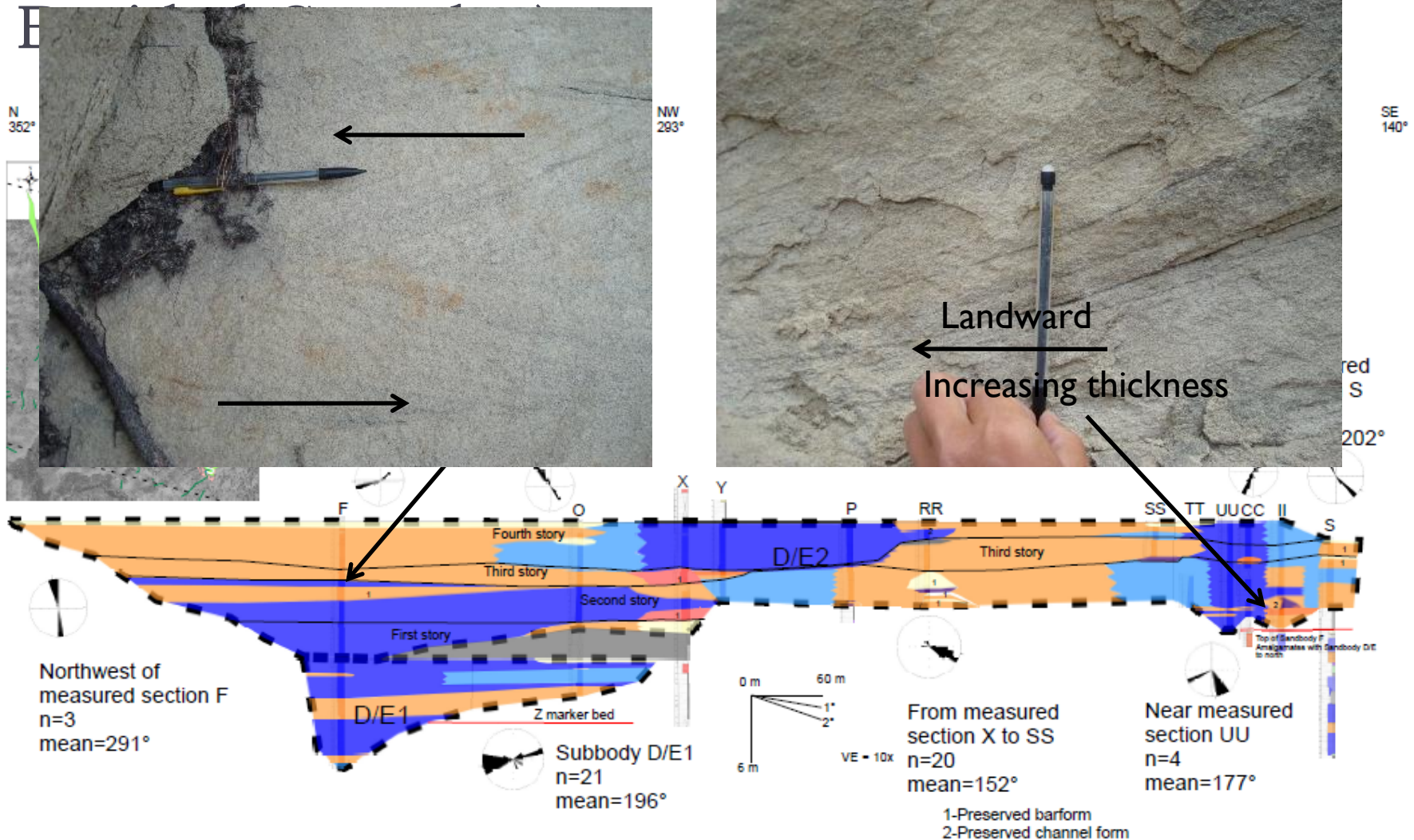
► Tidal bundling

► Mud drapes

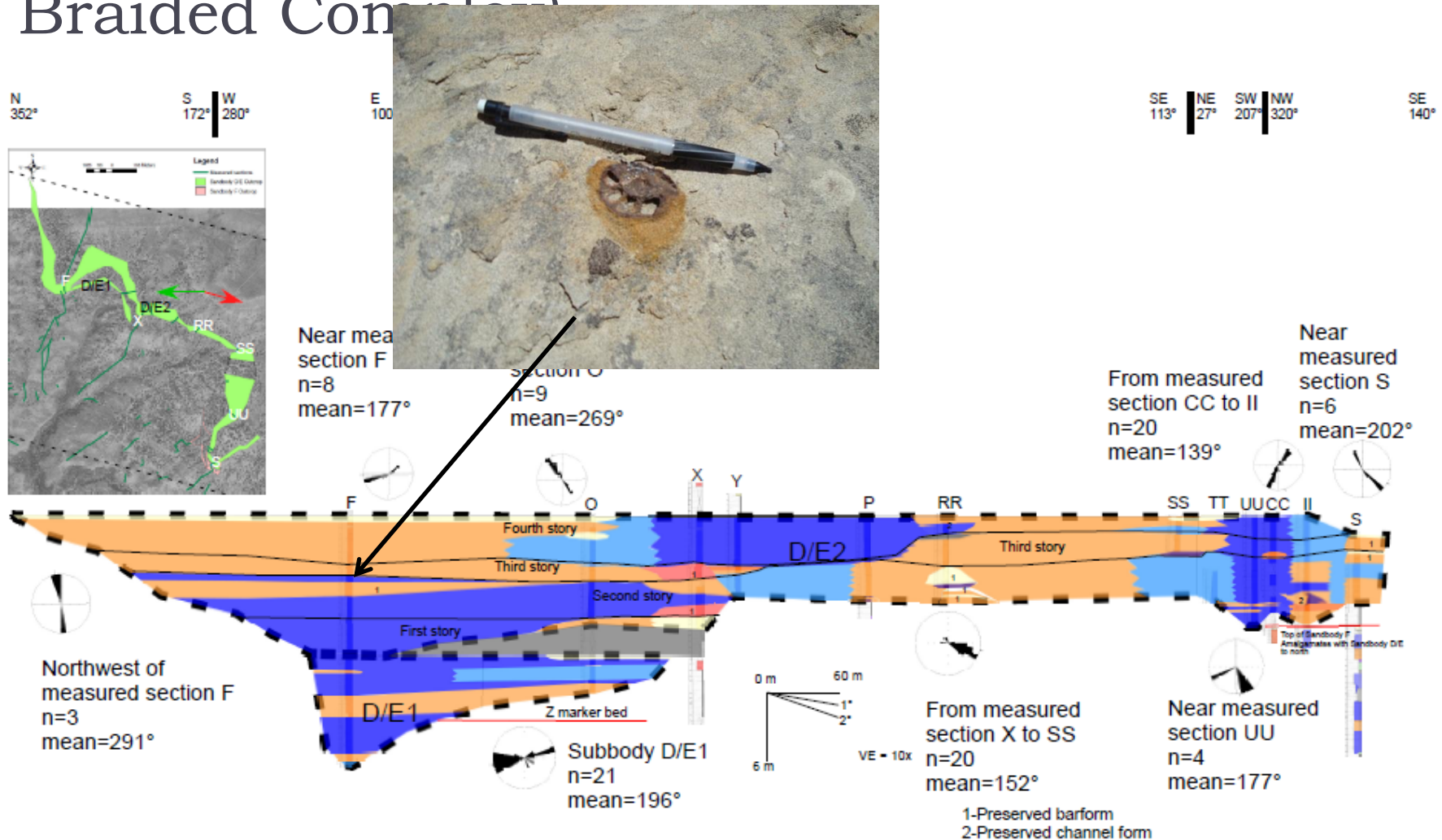
► Marine fossils



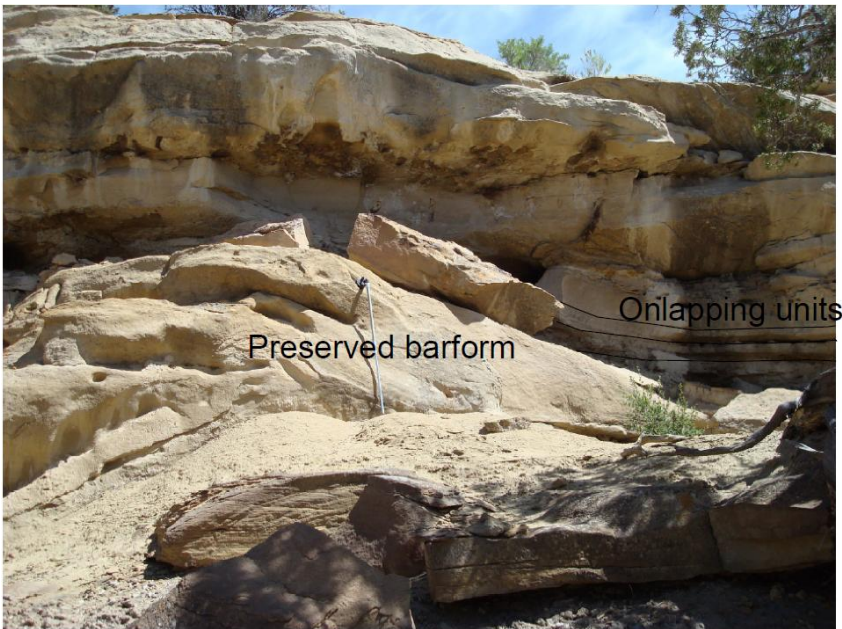
Sandbody D/E [S3 Interval] (Tidally Influenced Channel Fill/Tidally Influenced



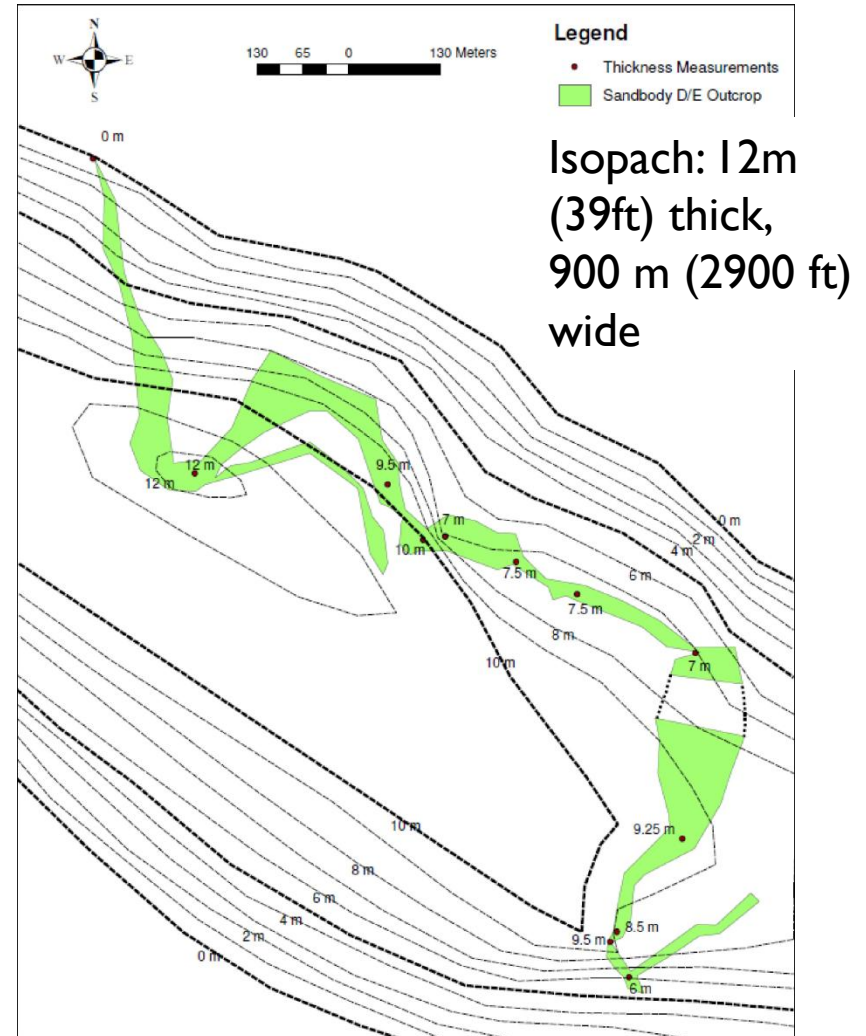
Sandbody D/E [S3 Interval] (Tidally Influenced Channel Fill/Tidally Influenced Braided Complex)



Subbody D/E2 (major body in Zone S3)

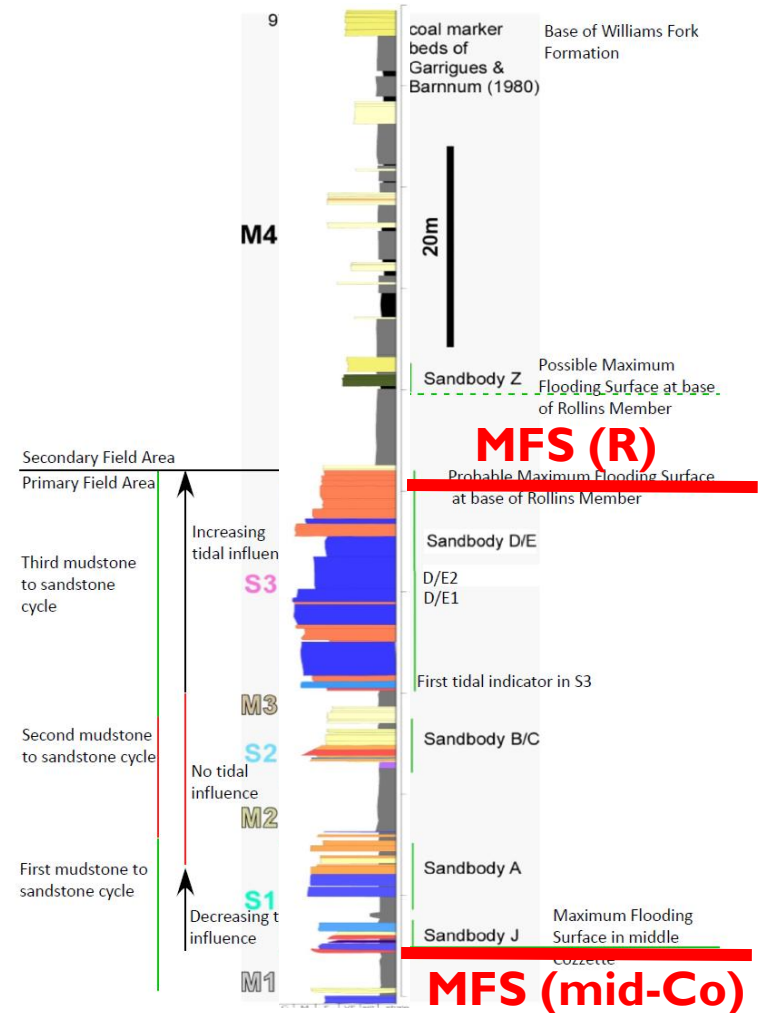


High barform preservation within a thick succession of high net:gross sandstone



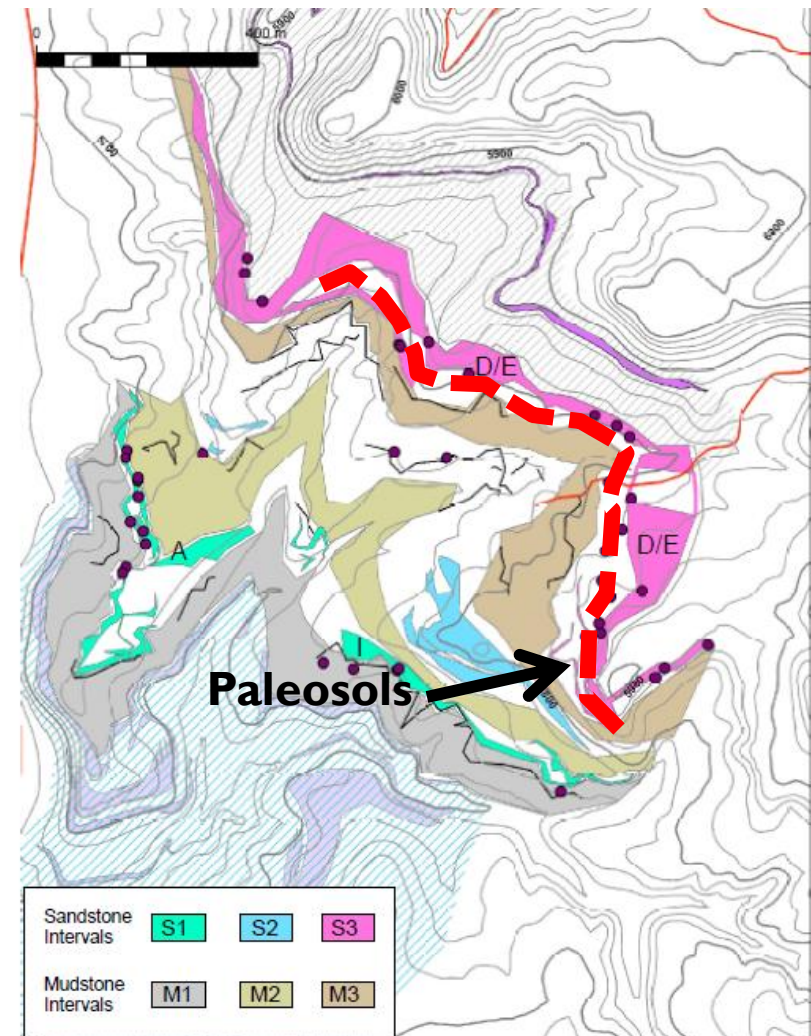
Maximum Flooding Surfaces

- ▶ Tidal indicators
 - ▶ Decreasing in S1
 - ▶ Increasing in S3
- ▶ Regional coal
 - ▶ Above Sandbody D/E (M4 interval)
- ▶ Two maximum flooding surfaces
 - ▶ Base of S1 interval
 - ▶ Top of S3 interval or coal bed in M4 interval



Sequence Boundaries

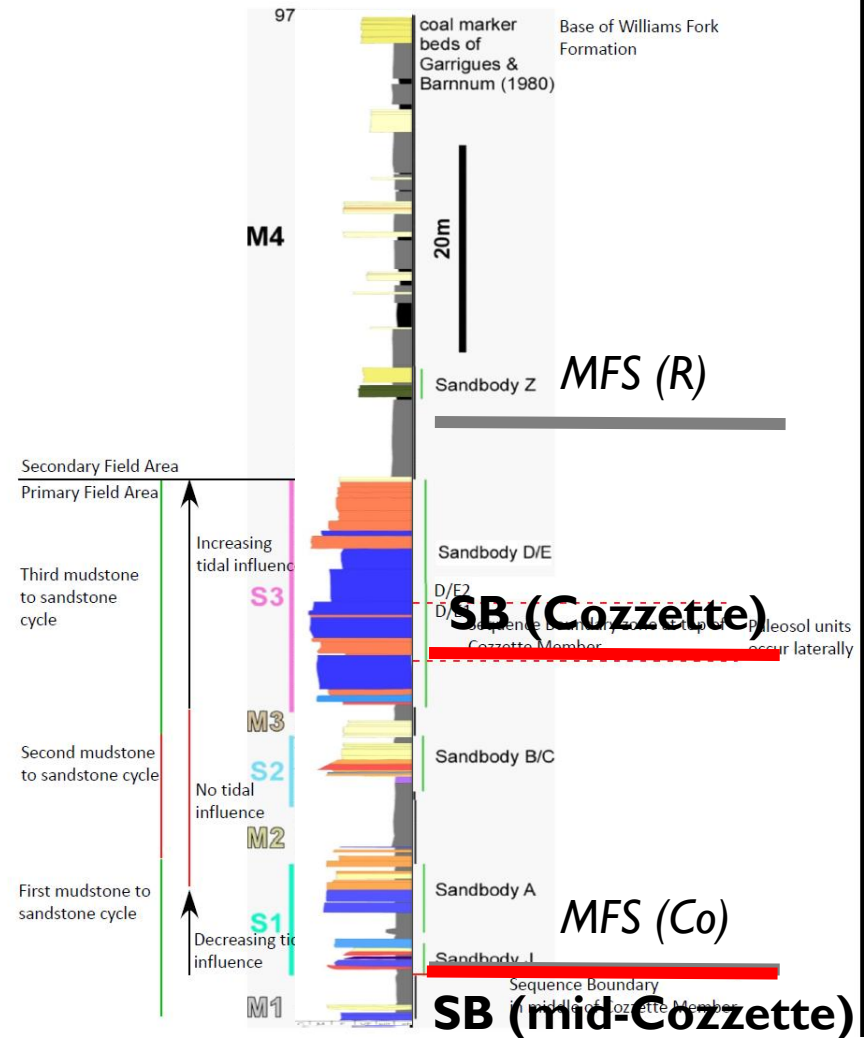
- ▶ Sandstone amalgamation
 - ▶ Up to 22m of continuous sandstone in S3
- ▶ Lengthy subaerial exposure
 - ▶ Concentration of terrestrial fossils at base of S1 and S3
 - ▶ Possible paleosols in S3
- ▶ Two sequence boundaries
 - ▶ Base S1 interval (merged with MFS)
 - ▶ Lower S3 interval



Location of permineralized wood fossils

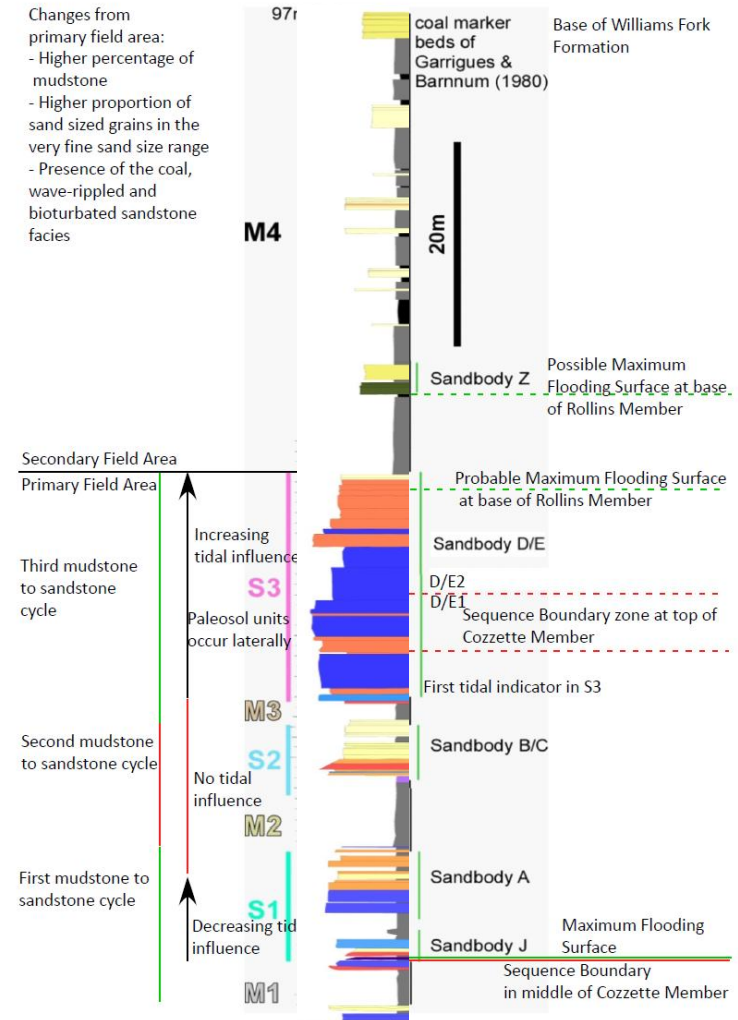
Sequence Boundaries

- ▶ Sandstone amalgamation
 - ▶ Up to 22m of continuous sandstone in S3
- ▶ Lengthy subaerial exposure
 - ▶ Concentration of terrestrial fossils at base of S1 and S3
 - ▶ Possible paleosols in S3
- ▶ Two sequence boundaries
 - ▶ Base S1 interval (merged with MFS)
 - ▶ Lower S3 interval



Conclusions

- ▶ **10 Sandbody Types**
 - ▶ 6 tidal
 - ▶ 4 fluvial
- ▶ **Low gradient coastal plain**
 - ▶ Tidal Influence > 60 km inland
- ▶ **Strong tidal influence in alternating, cyclical pattern**
 - ▶ Decreasing then increasing
 - ▶ Linked to 4th-order relative sea-level changes?
- ▶ **Likely Correlates to Cozzette to Rollins members of Iles Fm.**
 - ▶ Based on tidal indicators, sandstone amalgamation, and evidence of lengthy subaerial exposure



Acknowledgements

- ▶ **Discussions with:**

- ▶ Dr. Jennifer Aschoff, Dr. Steven Sonnenberg, Dr. Piret Plink-Bjorklund, CSM thesis committee for Thompson

- ▶ **Fossil identifications:**

- ▶ Dr. Ken Carpenter, Denver Museum of Nature and Science

- ▶ **Funding from:**

- ▶ Anadarko Fellowship to Thompson,
- ▶ The 3DTIGHT consortium, at CSM funded by ITF,
- ▶ Marshall and Jane Crouch Foundation Trust to Anderson, at CSM



Questions?

