

# **Petroleum Geology of Silo Field, Wyoming\***

**Stephen A. Sonnenberg<sup>1</sup>**

Search and Discovery Article #20115 (2011)

Posted September 12, 2011

\*Adapted from oral presentation at AAPG Rocky Mountain Section meeting, Cheyenne, Wyoming, USA, June 25-29, 2011

<sup>1</sup>Colorado School of Mines, Golden, CO ([ssonnenb@mines.edu](mailto:ssonnenb@mines.edu); [sonnenbg@aol.com](mailto:sonnenbg@aol.com))

## **Abstract**

The Silo Field is located in the northern part of the Denver basin. Production is from the fractured Niobrara Formation at depths ranging from 7600 to 8500 ft. (2318 to 2593 m). Cumulative production from 40 vertical and 68 horizontal wells at Silo is in excess of 10.4 million barrels of oil and 8.9 billion cubic feet gas. Recent drilling success with horizontal wells and multistage-fracture stimulation suggests much greater future production. Initial potentials from the new horizontal wells range from 500 to 2000 bbl of oil/day.

The dominant lithologies of the Niobrara are limestones (chalks) and interbedded calcareous and organic-rich shales. Niobrara thickness ranges from 280 to 300 ft. (85 to 92 m). Four limestone intervals, averaging 30 ft. (9.2 m), and three intervening shale intervals (averaging 47 ft or 14.3 m) occur regionally and are easily recognized on geophysical logs. The lower limestone is named the Fort Hays, and the overlying units are grouped together as the Smoky Hill member. Limestone beds in the Smoky Hill are informally named the A, B, and C intervals in increasing depth order. The fractures are concentrated in the more brittle limestones. The main production is from the middle limestones (B interval) of the Smoky Hill. Shows and production also come from the A, C, and Fort Hays chalk intervals in older vertical wells; this suggests they may be future targets of horizontal drilling. The current target of horizontal drilling is the B chalk interval. The intervening shales have high organic matter content and served as source beds and seals.

Open fracture systems are essential to Niobrara production because little matrix porosity exists in the limestones. Open fractures in the field are very consistent and are oriented N25-40W. The consistent orientation of fractures suggests that this is the orientation of the maximum horizontal stress. Open fractures may be created by: (1) solution of Permian evaporites; (2) folding over basement fault systems; (3) regional horizontal stress field; (4) hydrocarbon pore pressure; (5) differential compaction over paleotopographic highs; (6) movement on wrench faults; (7) compaction and dewatering of the chalks; and (7) other uncertain causes. Additional data are needed to resolve the origin of the fractures.

High resistivities are observed in limestone beds at Silo. These resistivity anomalies appear to be related to the presence of a large hydrocarbon accumulation delineated by iso-resistivity mapping.

Factors present at Silo will serve as a model for future Niobrara production in the Rocky Mountain region. These factors include (1) mature source rocks interbedded with brittle limestone; (2) open fractures to form the reservoir; (3) resistivity anomalies indicating accumulation; and (4) technology to efficiently produce the reservoir.

### **Selected References**

Saint, R.E., and M.J. Campbell, 1991, New Understanding of Niobrara Reservoir Characteristics Based on Horizontal Drilling in Silo Field, Southeastern Wyoming: AAPG Bulletin, v. 75/6, p. 1123.

Davis, T.L., and C. Lewis, 1990, Reservoir Characterization by 3-D, 3-C Seismic Imaging, Silo Field, Wyoming: Leading Edge, v. 9/11, p. 22-25.

Du Rouchet, J., 1981, Stress fields, a key to oil migration: AAPG Bulletin, v. 65/1, p. 74-85.

Lockridge, J.P., and P.A. Scholle, 1978, Niobrara Gas in Eastern Colorado and Northwestern Kansas: RMAG, Energy Resources of the Denver Basin, p. 35-49.

Lorenz, J.C., L.W. Teufel, and N.R. Warpinski, 1991, Regional Fractures I: A Mechanism for the formation of Regional Fractures at Depth in Flat-Lying Reservoirs (1): AAPG Bulletin, v. 75-11, p. 1714-1737.

Lorenz, J.C., and S.J. Finley, 1991, Regional Fractures II: Fracturing of Mesaverde Reservoirs in the Piceance Basin, Colorado (1): AAPG Bulletin, v. 75/11, p. 1738-1757.

Meissner, F.F., 1978, Petroleum Geology of the Bakken formation Williston Basin, North Dakota and Montana: Montana Geological Society, Twenty-fourth Annual Conference, Williston Basin Symposium: The Economic Geology of Williston Basin, p. 207-227.

Sonnenberg, S.A., and R.J. Weimer, 1991, Silo Field, Laramie County, Wyoming: A Guide for Future Fractured Niobrara Production: AAPG Search and Discovery Article #91010. Website accessed 1 September 2011.

<http://www.searchanddiscovery.com/abstracts/html/1991/rms/abstracts/1141.htm>

Sonnenberg, S.A., and R.J. Weimer, 1993, Oil production from Niobrara Formation, Silo field, Wyoming – Fracturing associated with a possible wrench fault system(?): The Mountain Geologist, v. 30/2, p. 39-54.

Svoboda, J.O., 1995, Is Permian Salt dissolution the Primary Mechanism for Fracture Genesis at Silo Field, Wyoming?: RMAG, High-Definition Seismic Guidebook, p. 79-85.

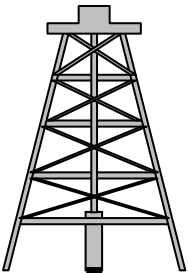
Thomas, G.E., 1992, Effects of differential compaction fracturing shown in four reservoirs: Oil and Gas Journal, Feb. 3, p. 54-57.

Vincelette, R.R., and N.H. Foster, 1992, Fractured Niobrara of Northwestern Colorado: RMAG, Geological Studies Relevant to Horizontal Drilling: Examples from Western North America, p. 227-242.

# **Petroleum Geology of Silo Field**

**Stephen A. Sonnenberg**

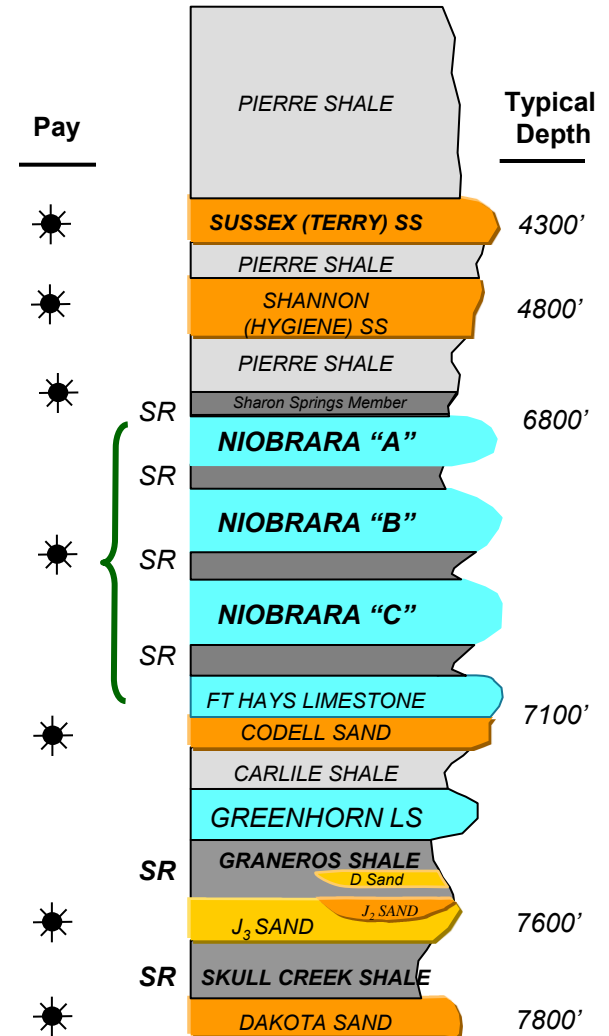
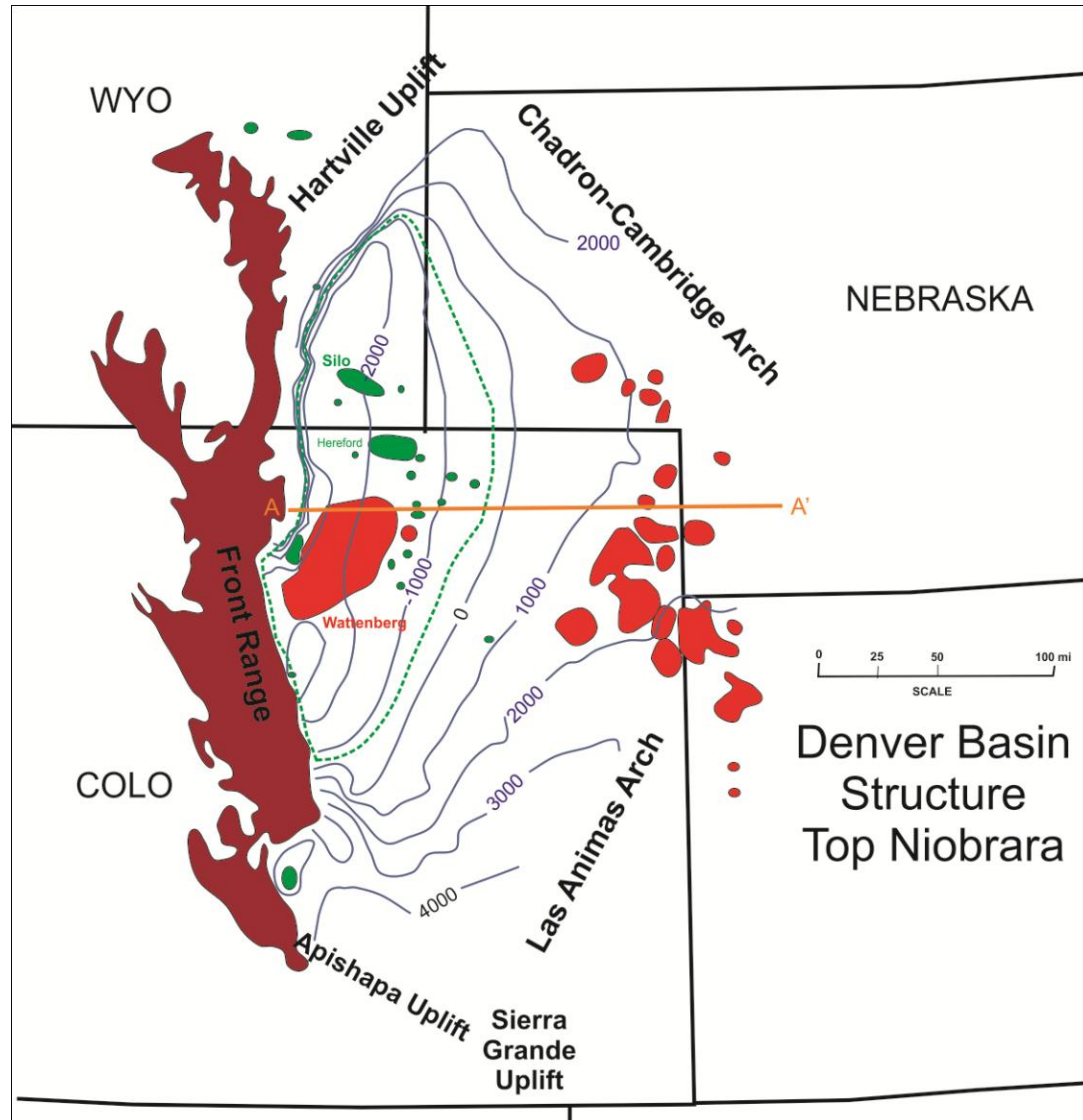
**Colorado School of Mines**

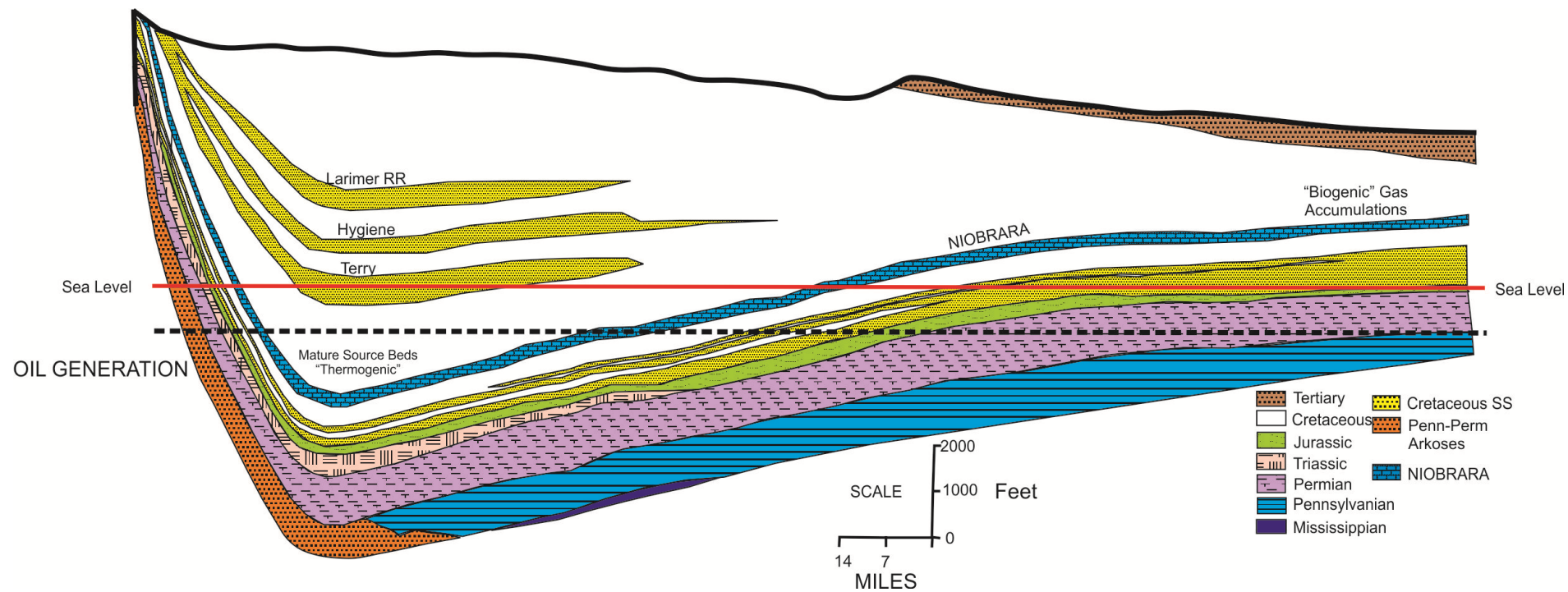


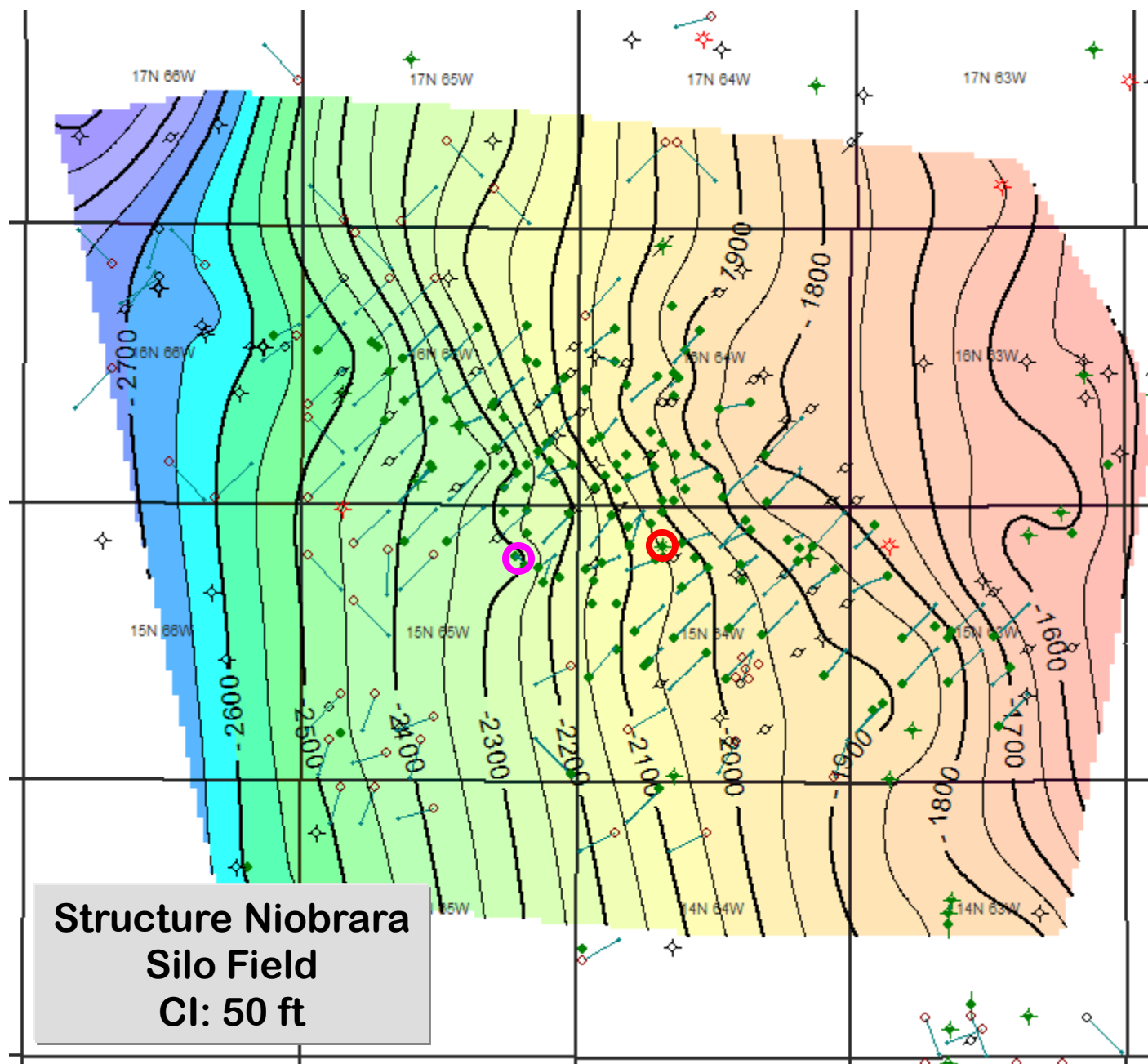
# Niobrara Petroleum System - Denver Basin

## Shallow Biogenic Gas

## Deep Thermogenic Oil and Gas







## SILO FIELD *Niobrara Fm.*

### Discovery:

**1981**

Amoco Champlin 300 1  
SE SE Sec 5, T15N, R64W  
Ft Hays completion  
78 BOPD

**1990**

First horizontal:  
Warren # 1  
Sec. 11, T15N, R65W  
600 BOPD

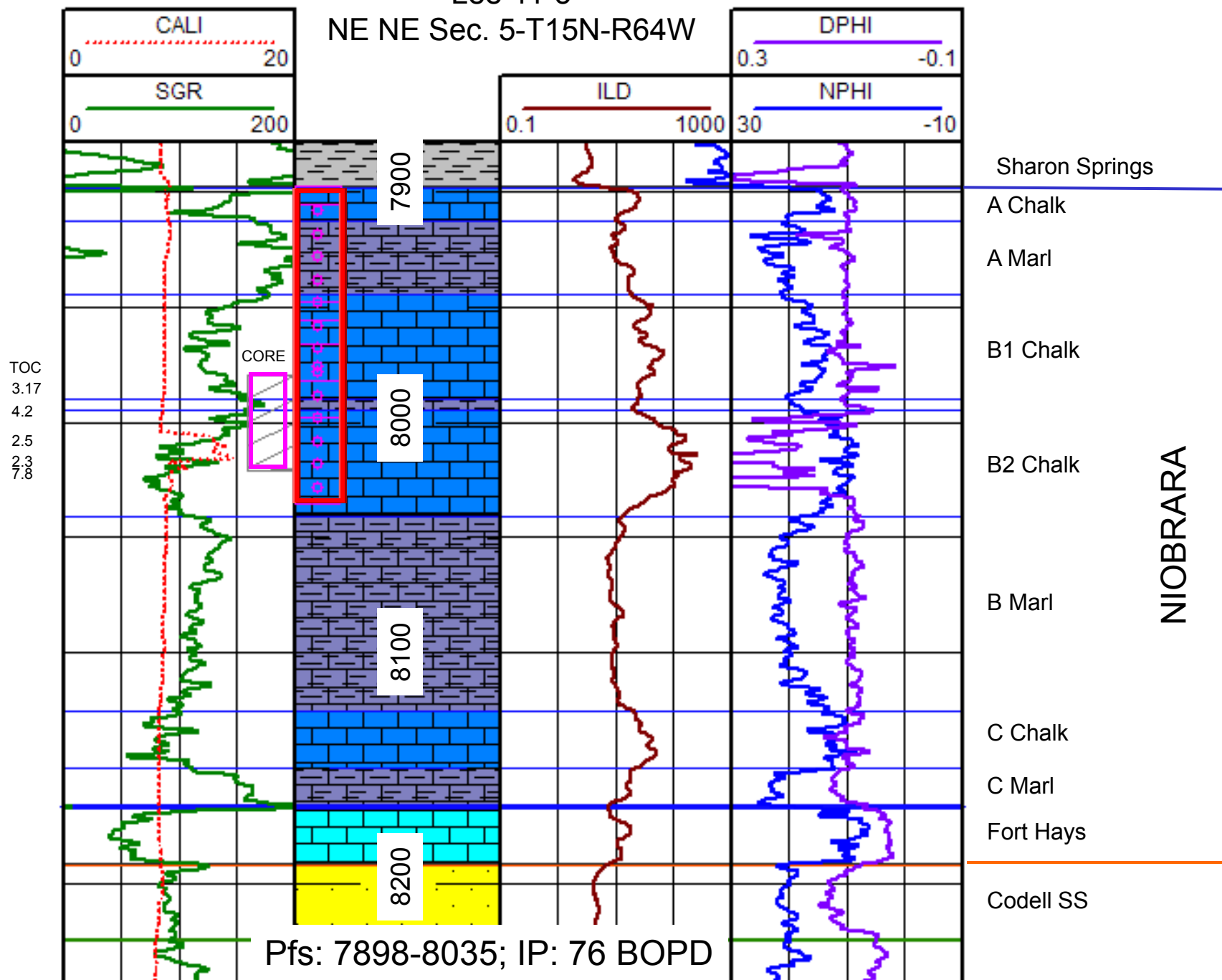
### Vertical Depths:

7100 to 8800 ft

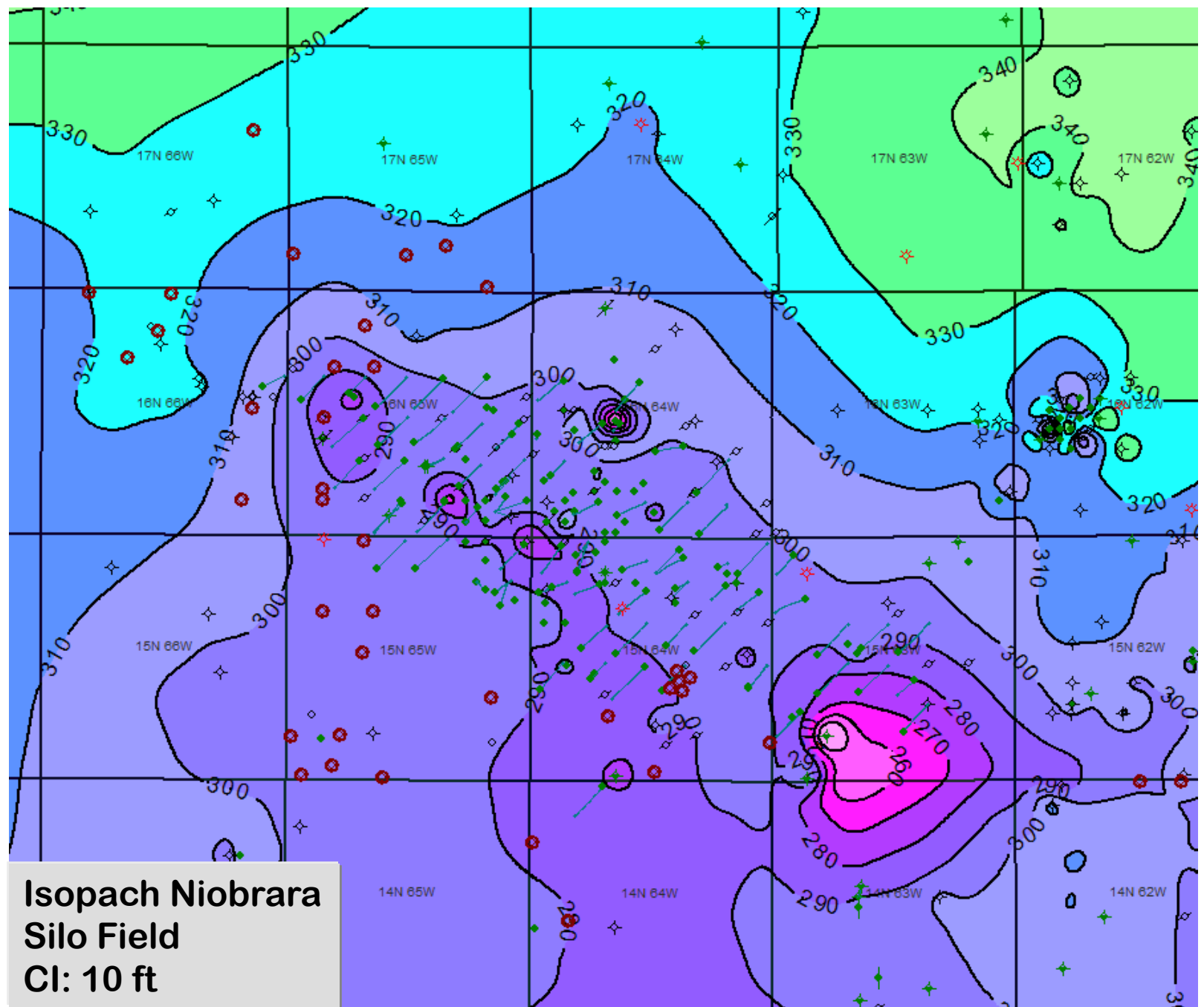
### Cum Prod:

10.4 MMBO  
8.9 BCFG  
6.3 MMBW

Lee 41-5  
NE NE Sec. 5-T15N-R64W



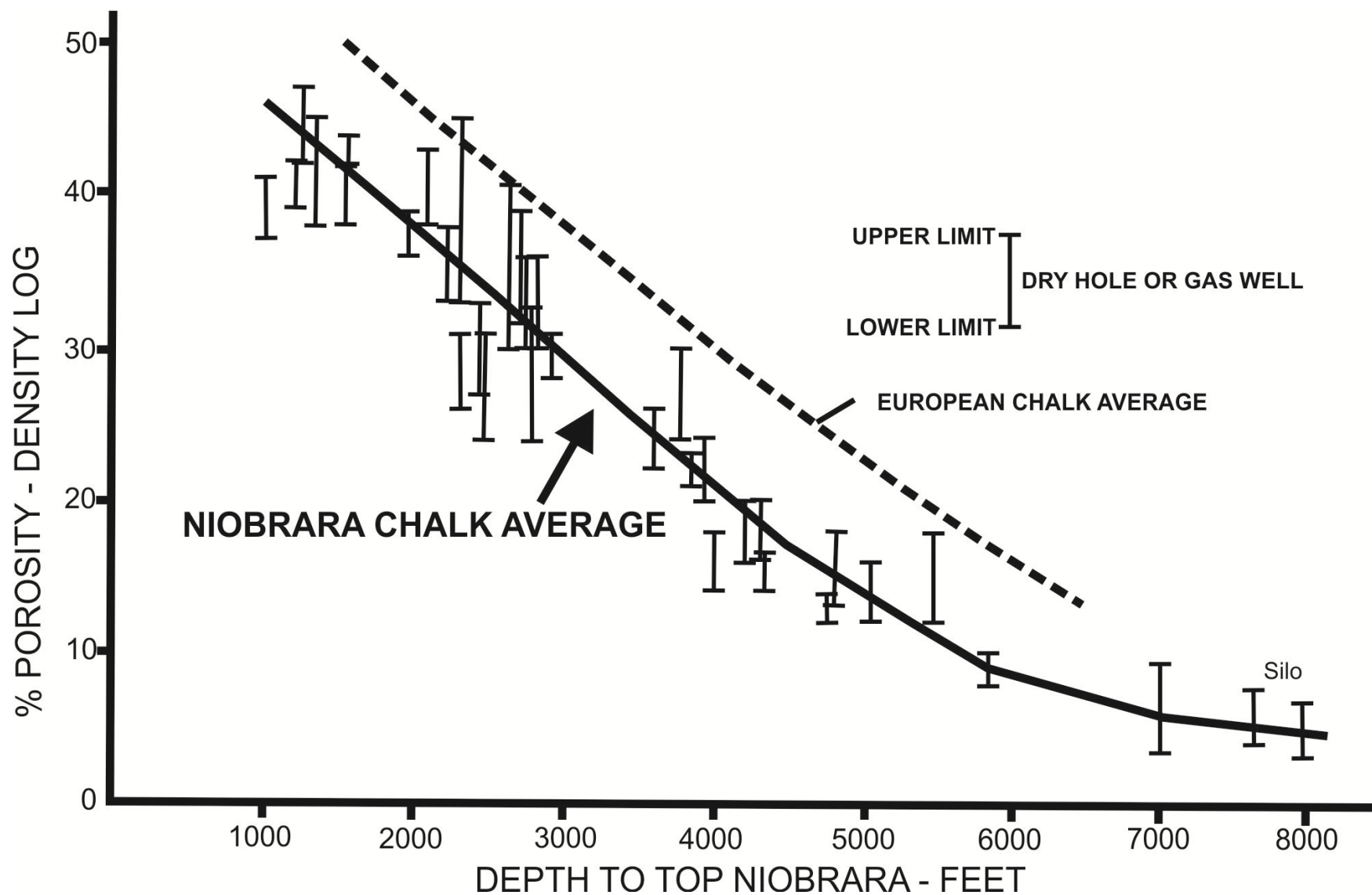




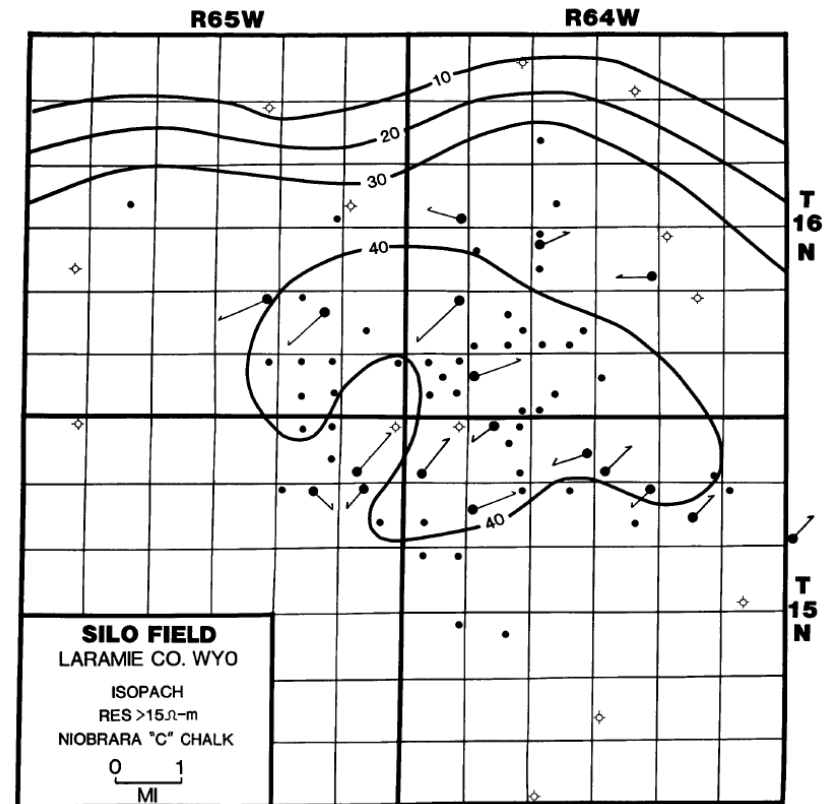
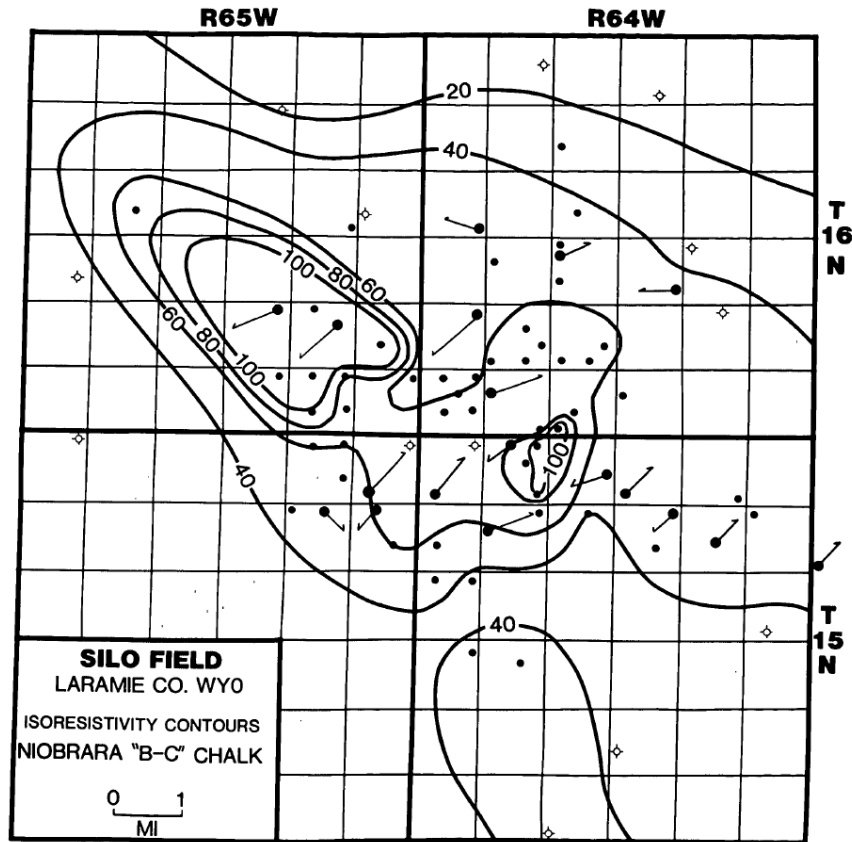
# Reservoir Properties

---

- Porosity:  $< 8\%$
- Permeability:  $< 0.1$  md
- Pay: 30 – 60 ft
- GOR: 1030 cu ft per barrel
- Oil gravity: 35° API



# Resistivity Mapping and Accumulation



# Fractures

---

- **Differential compaction over paleotectonic high (Thomas, 1992)**
- **Folding over basement faults (Davis and Lewis, 1990)**
- **Wrench faults (Sonnenberg and Weimer, 1991; Svoboda, 1995)**
- **Permian salt dissolution (Campbell and Saint, 1991)**
- **Regional fracture system (Lorenz et al., 1991)**
- **Pore pressure fractures (Meissner, 1978)**
- **Compaction & dewatering (Brown, 2004)**
- **Neogene extension (Vincelette and Foster, 1992)**

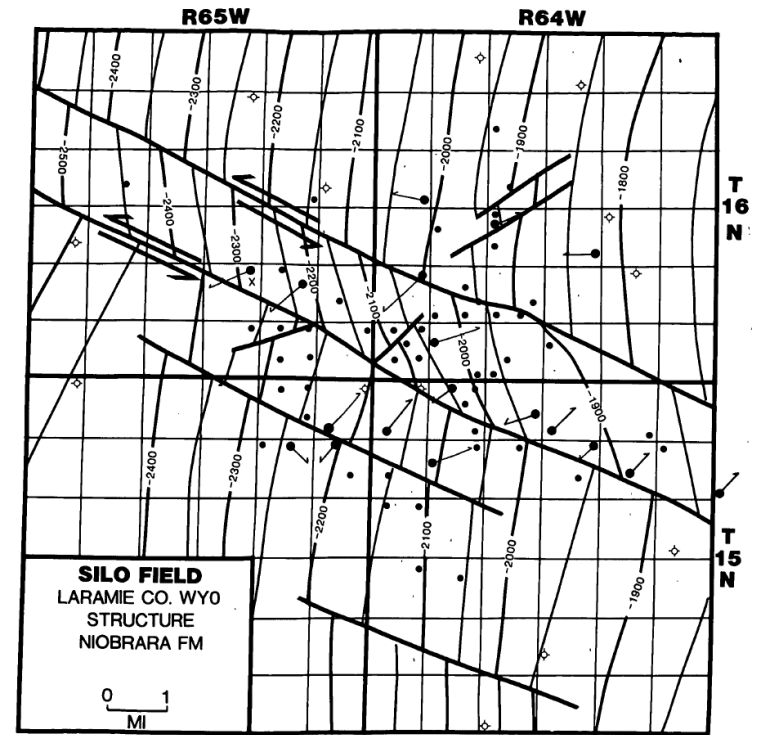
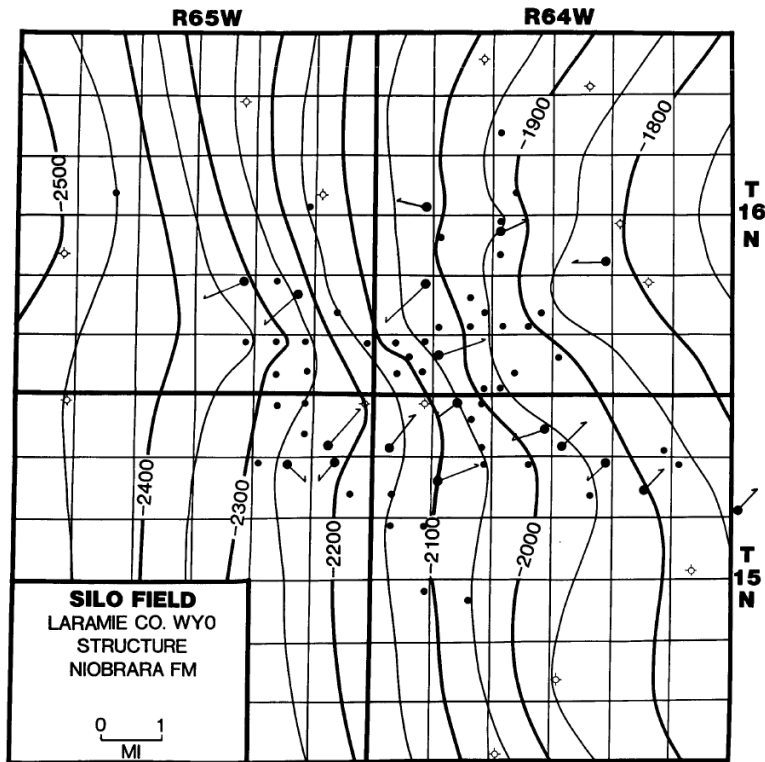
# Vertical Stylolites and Fractures





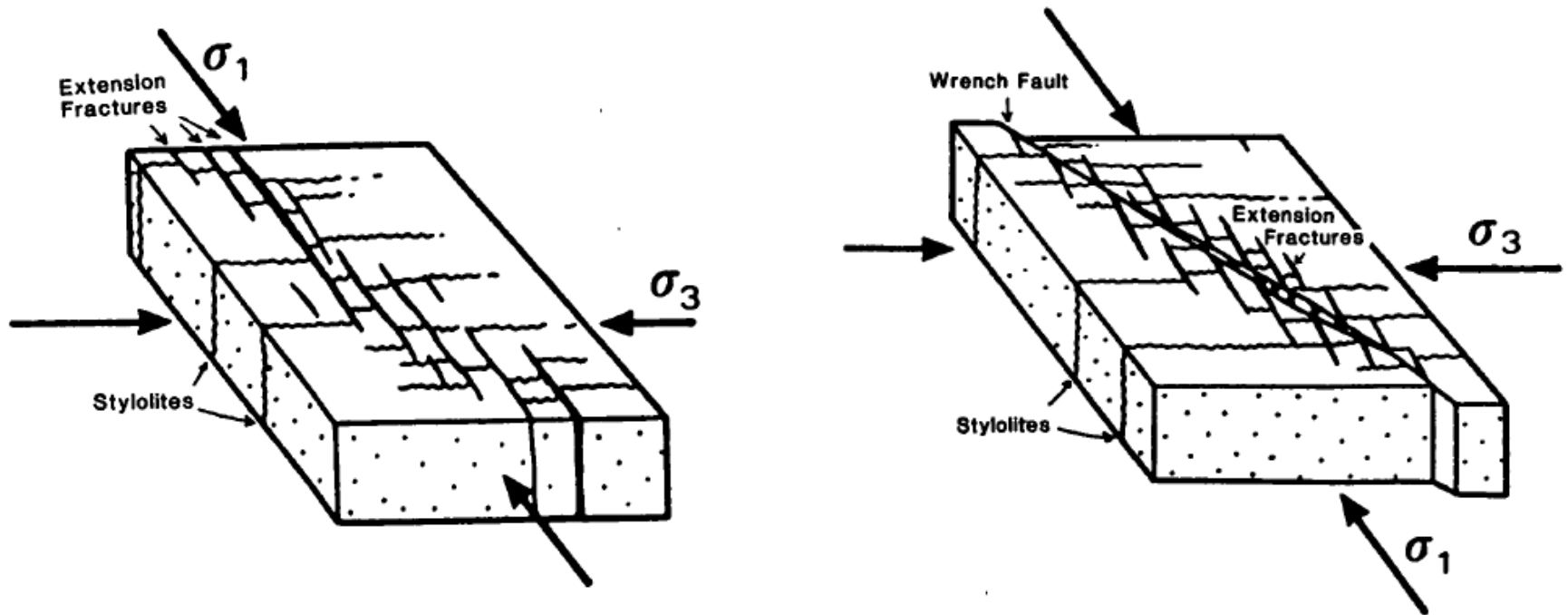


# Structure Top Niobrara





# Extension Fractures and Wrench Faults



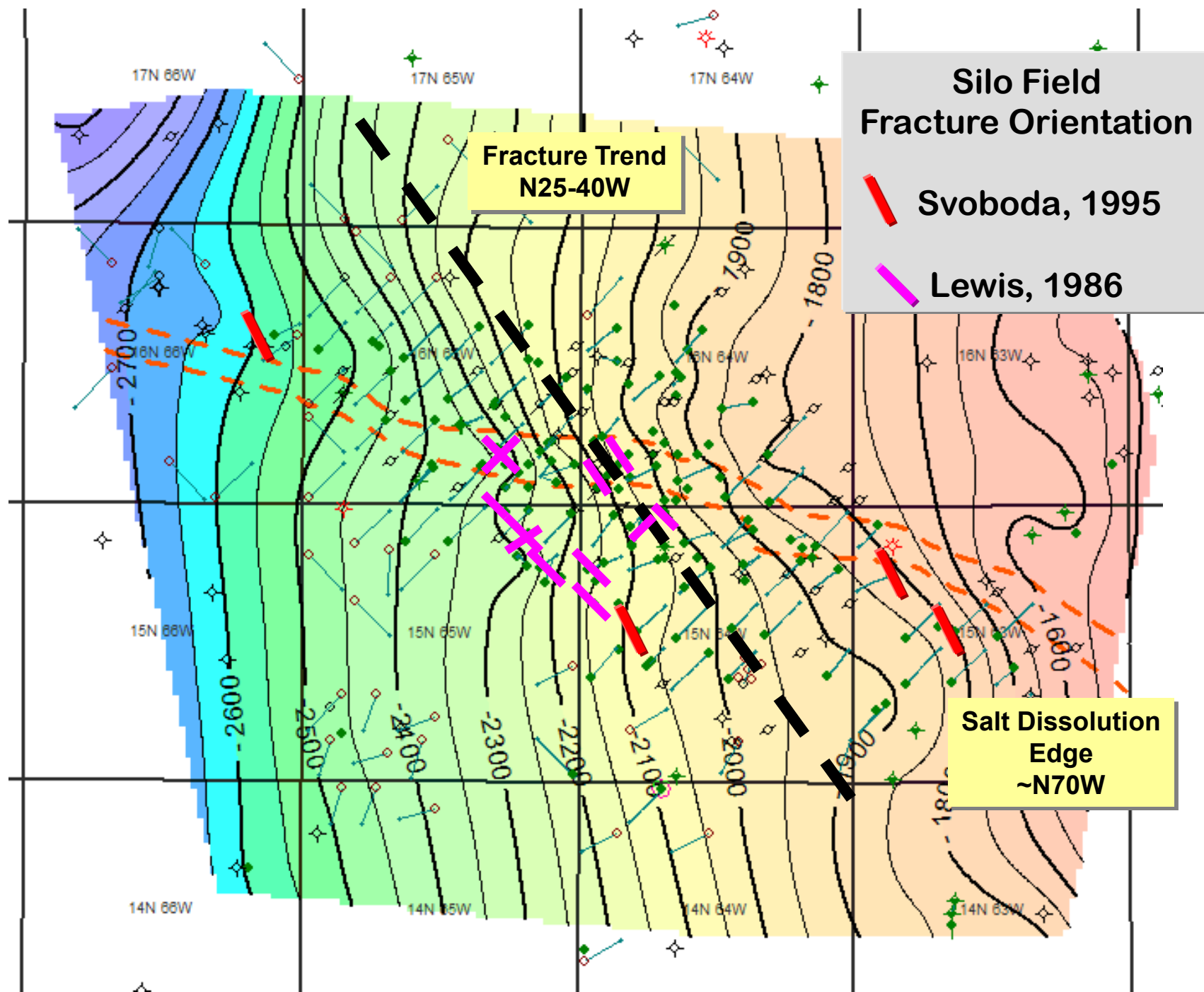
## Silo Field Fracture Orientation

 Svoboda, 1995

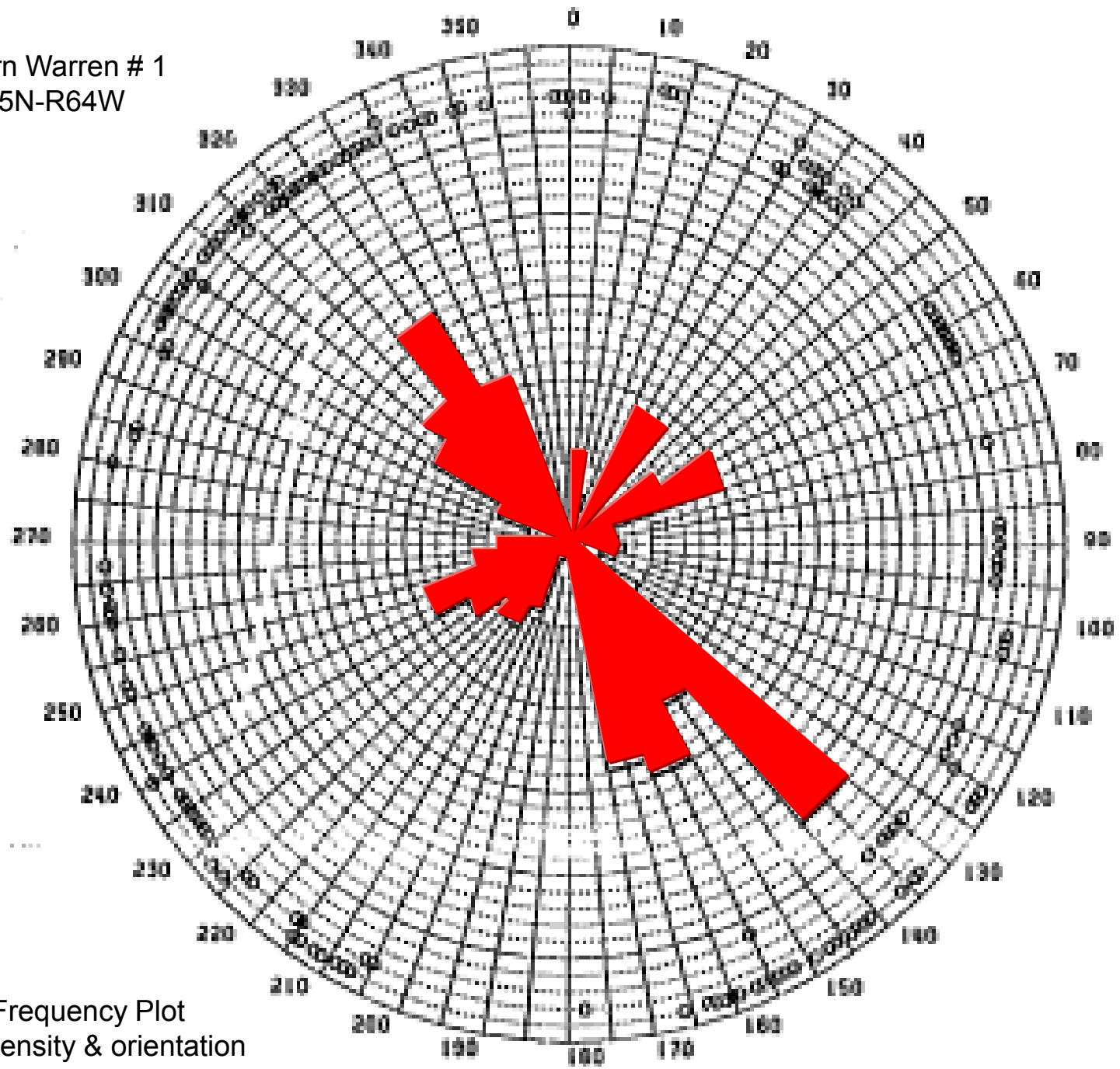
 Lewis, 1986

Fracture Trend  
N25-40W

Salt Dissolution  
Edge  
~N70W



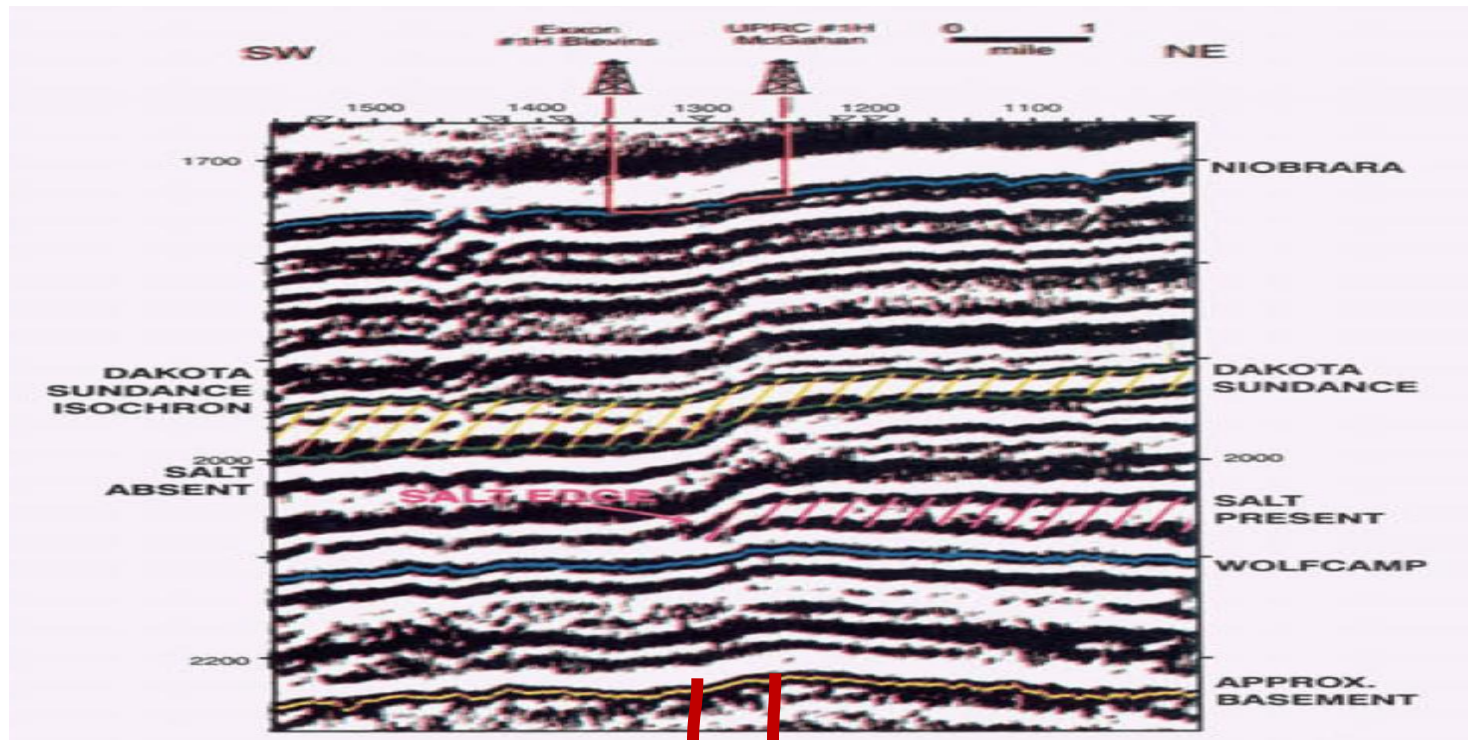
Great Western Warren # 1  
Sec. 7-T15N-R64W



Polar Frequency Plot  
Fracture intensity & orientation

# Silo Fractures

- Structural monocline
- Basement faults control Permian salt dissolution
- Some wrench movement on faults

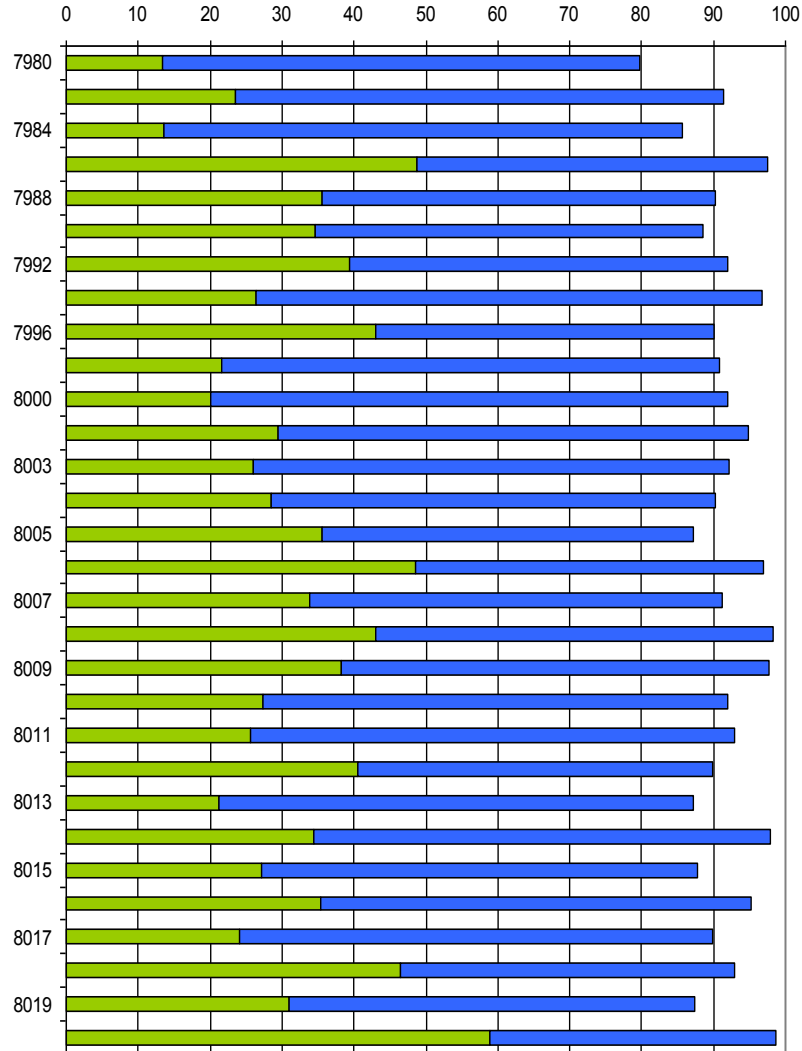


Modified from Svoboda, 1995

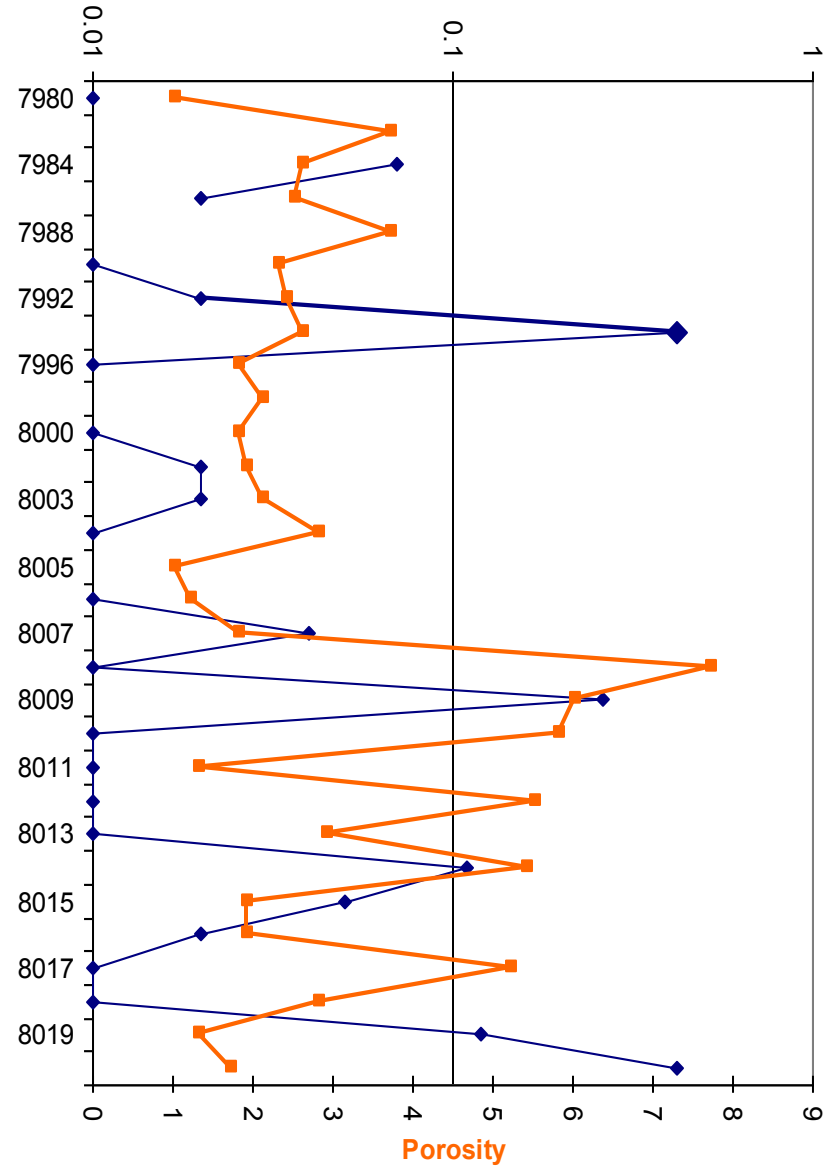
# Lee 41-5

## Sec. 5-T15N-R64W

LEE 41-5



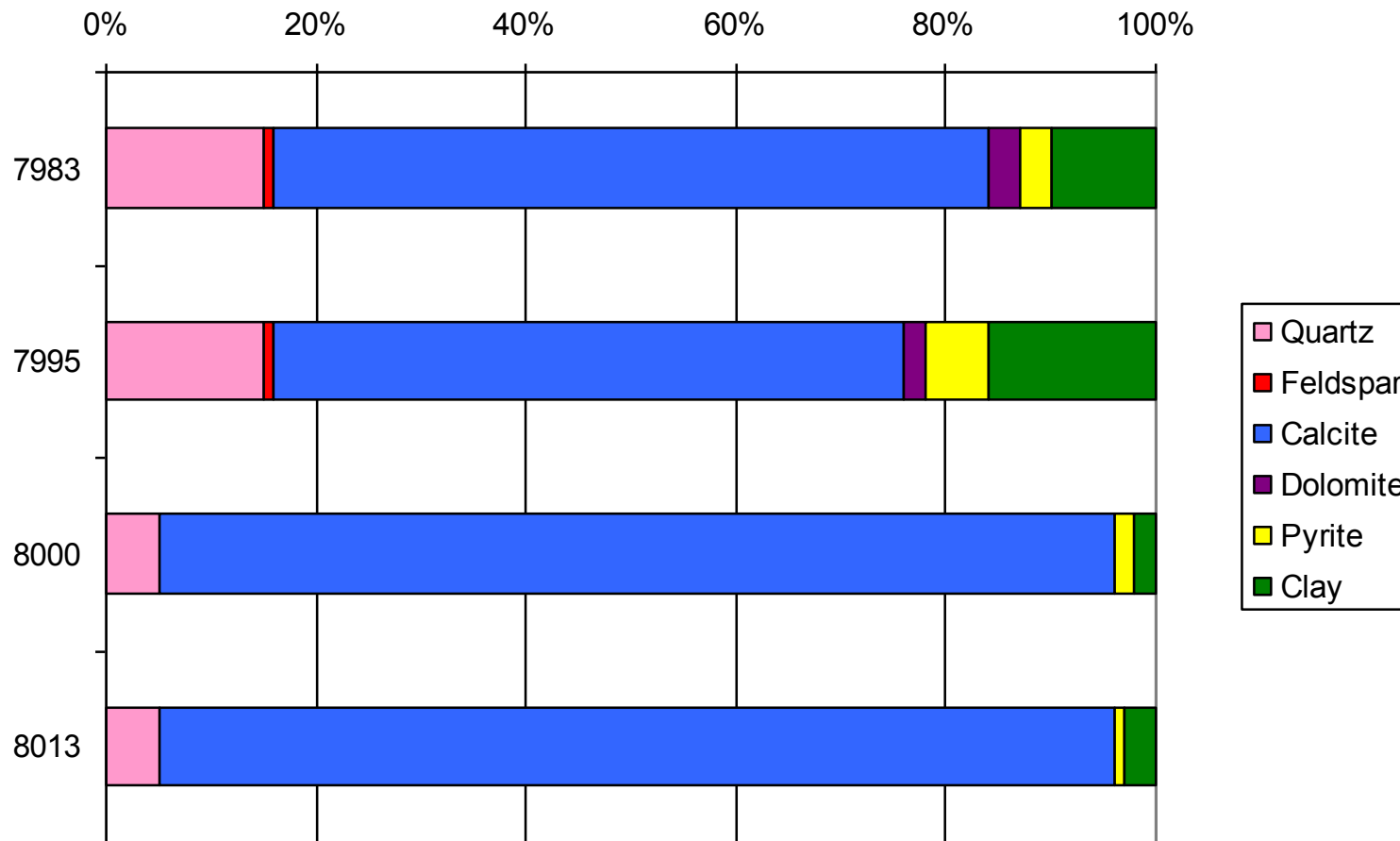
Permeability



# Lee 41-5

## Sec. 5-T15N-R64W

### XRD DATA



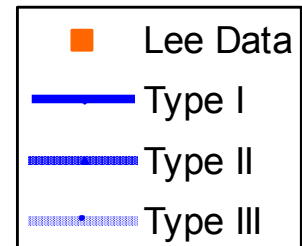
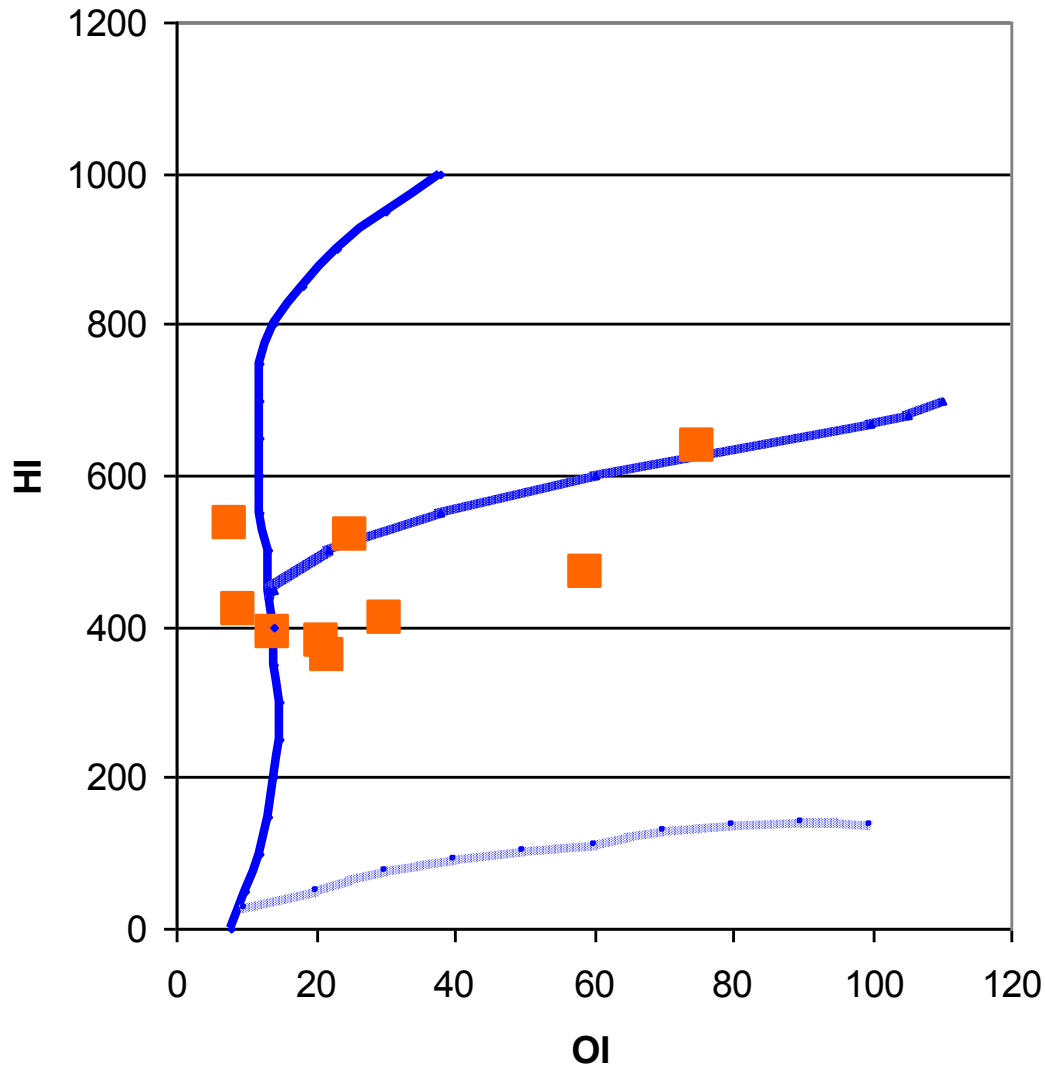
# Niobrara Marls

---

- TOC: 1 – 6 wt. percent
- Kerogen type: Type II

# Source Rocks Silo Field

HI OI

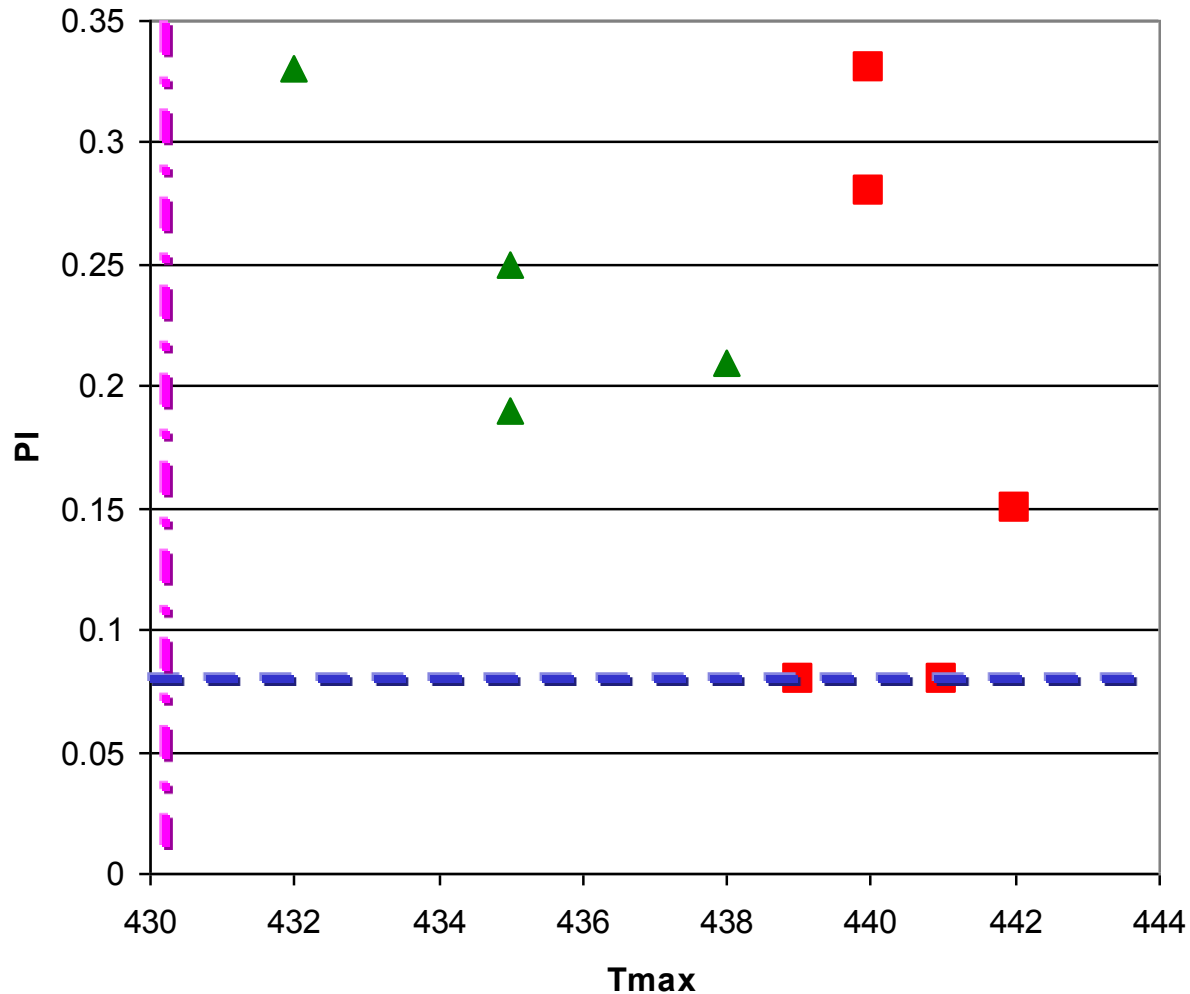


Lee 41-5  
Sec. 5-T15N-R64W  
7980-8017

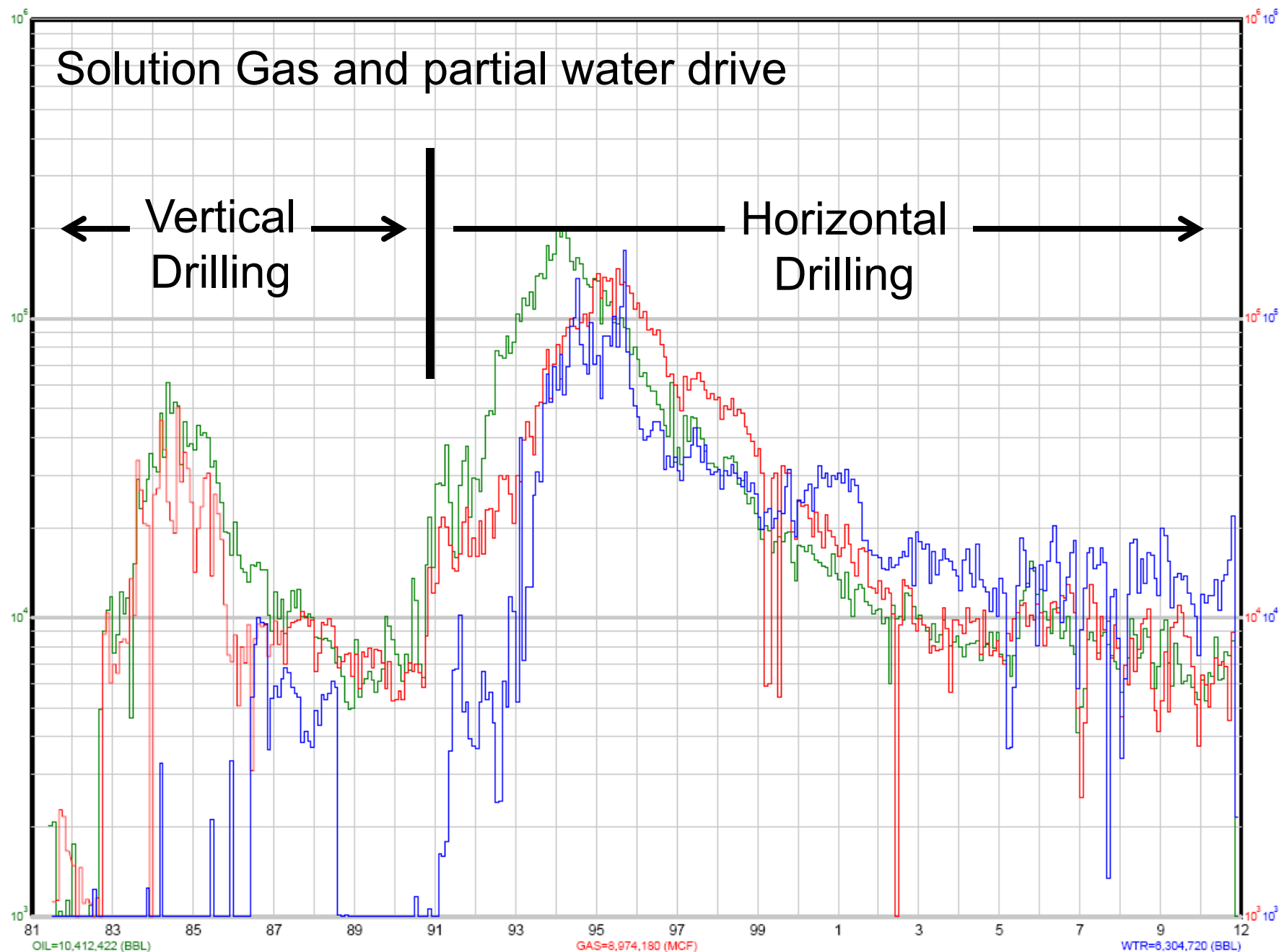


# Source Rocks Silo Field

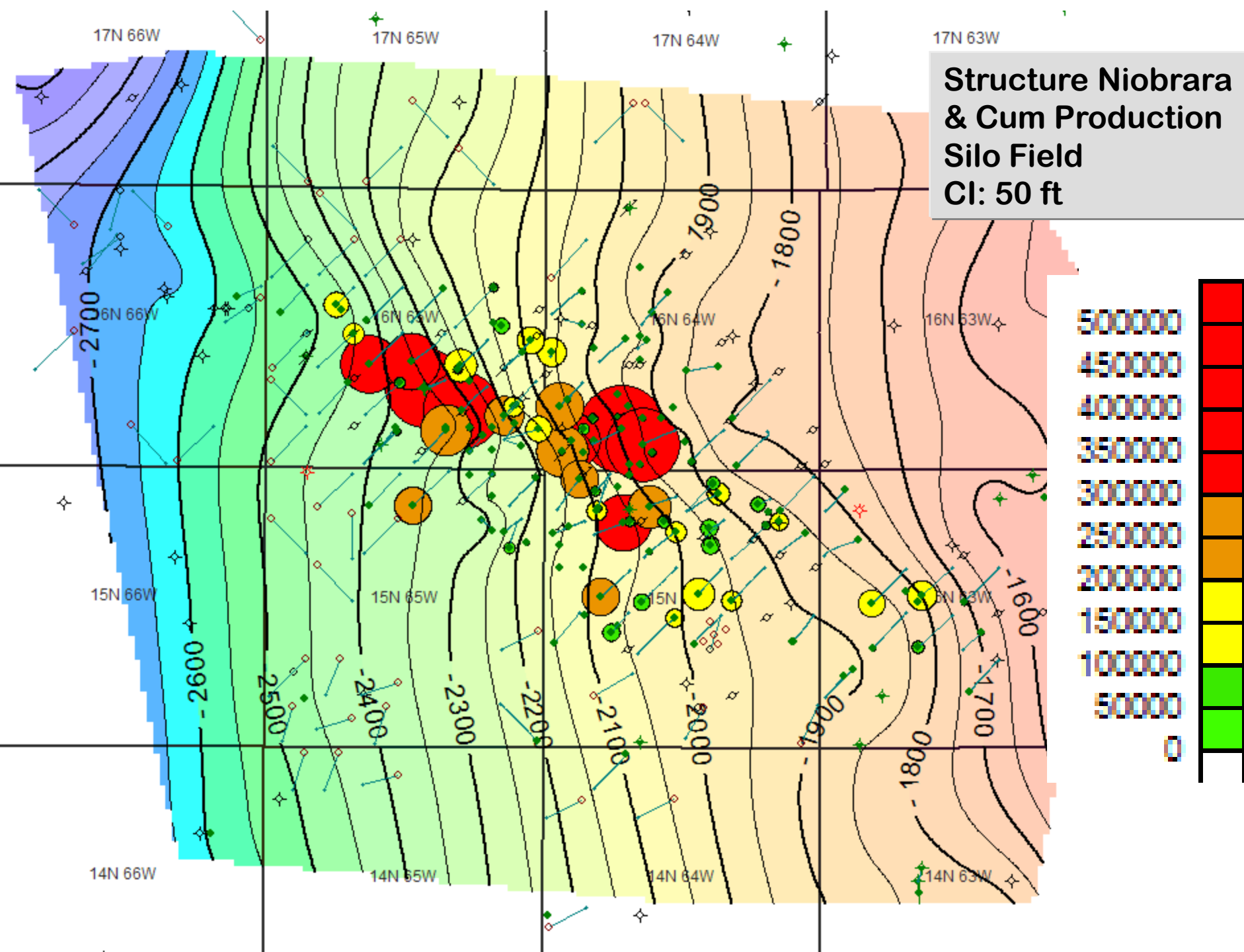
PI Tmax



# Solution Gas and partial water drive



**Structure Niobrara  
& Cum Production  
Silo Field  
CI: 50 ft**

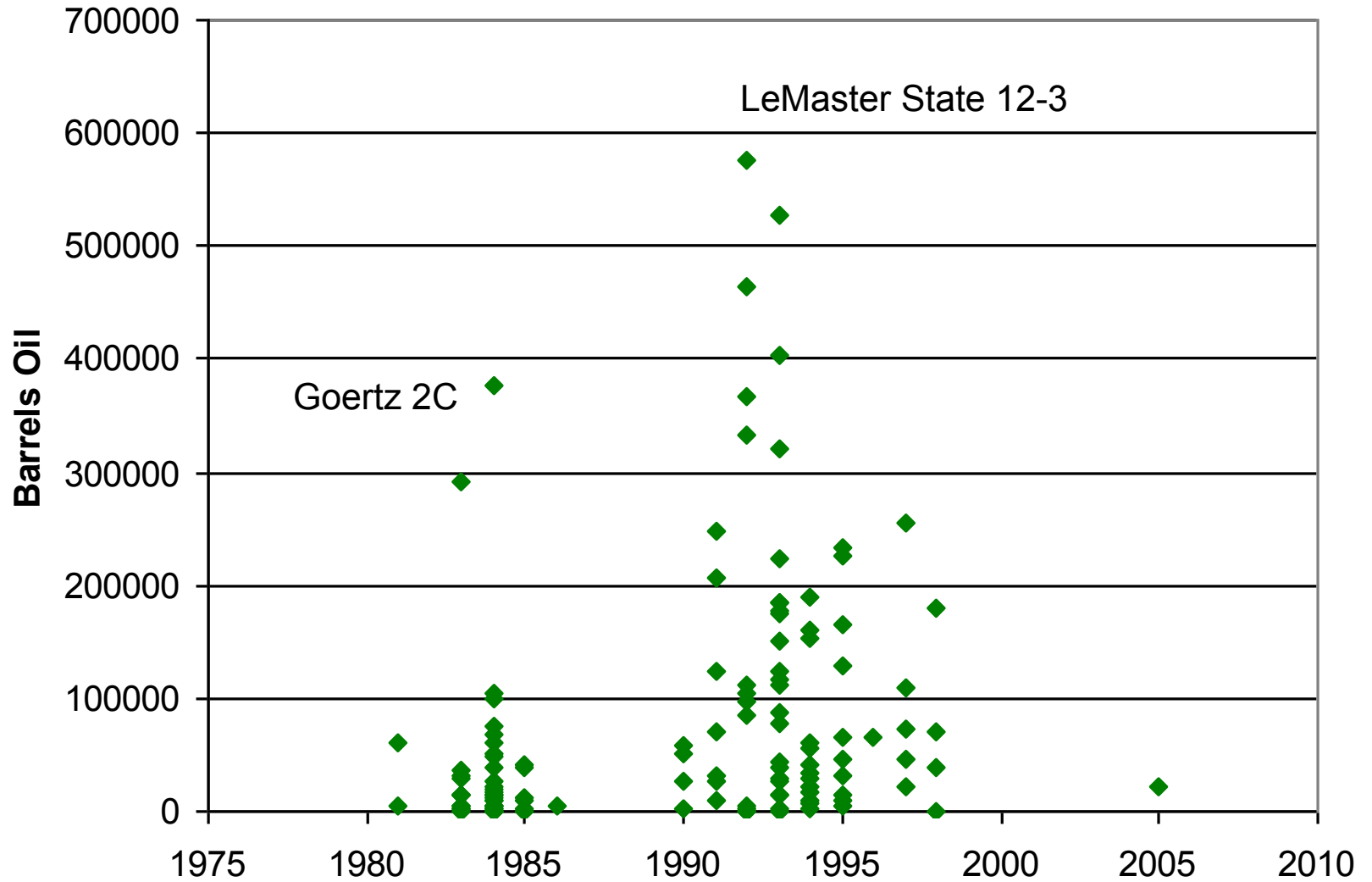


# Silo Production-EUR

---

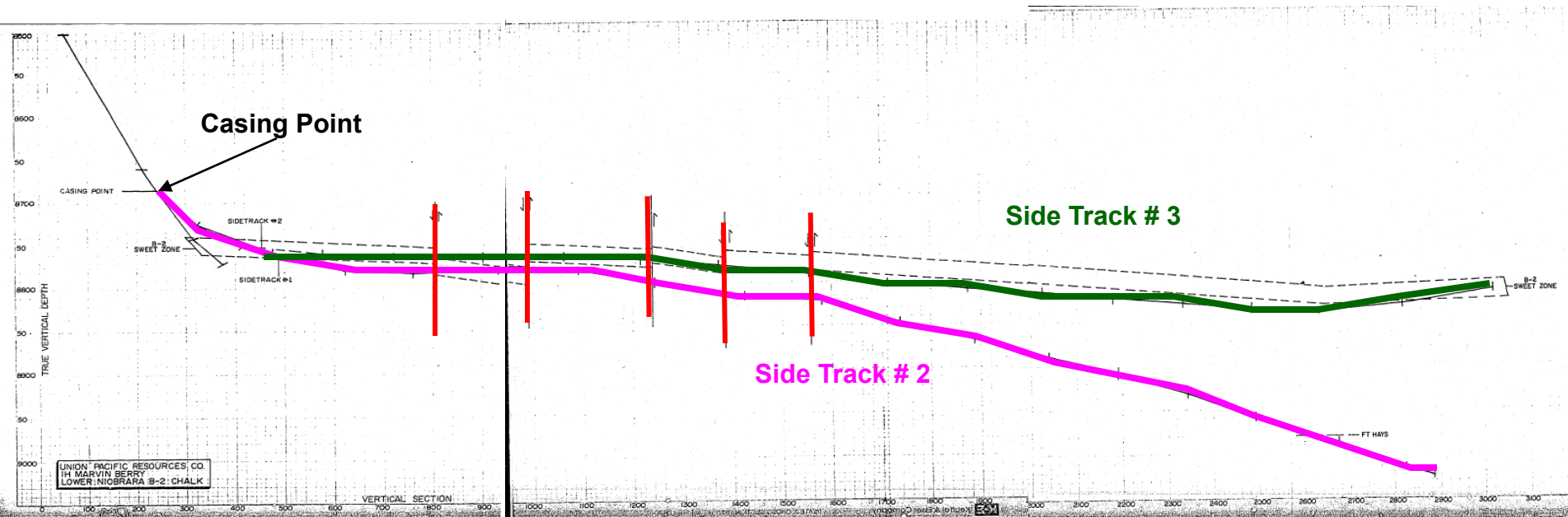
- **Vertical wells:** **34824 BO/w**
- **Horizontal wells:** **111251 BO/w**
- **Field EUR 11.5 MMBO (existing wells)**

# Silo EURs



# UPR Berry 41-13

## NE NE NE Sec. 13-T16N-R66W



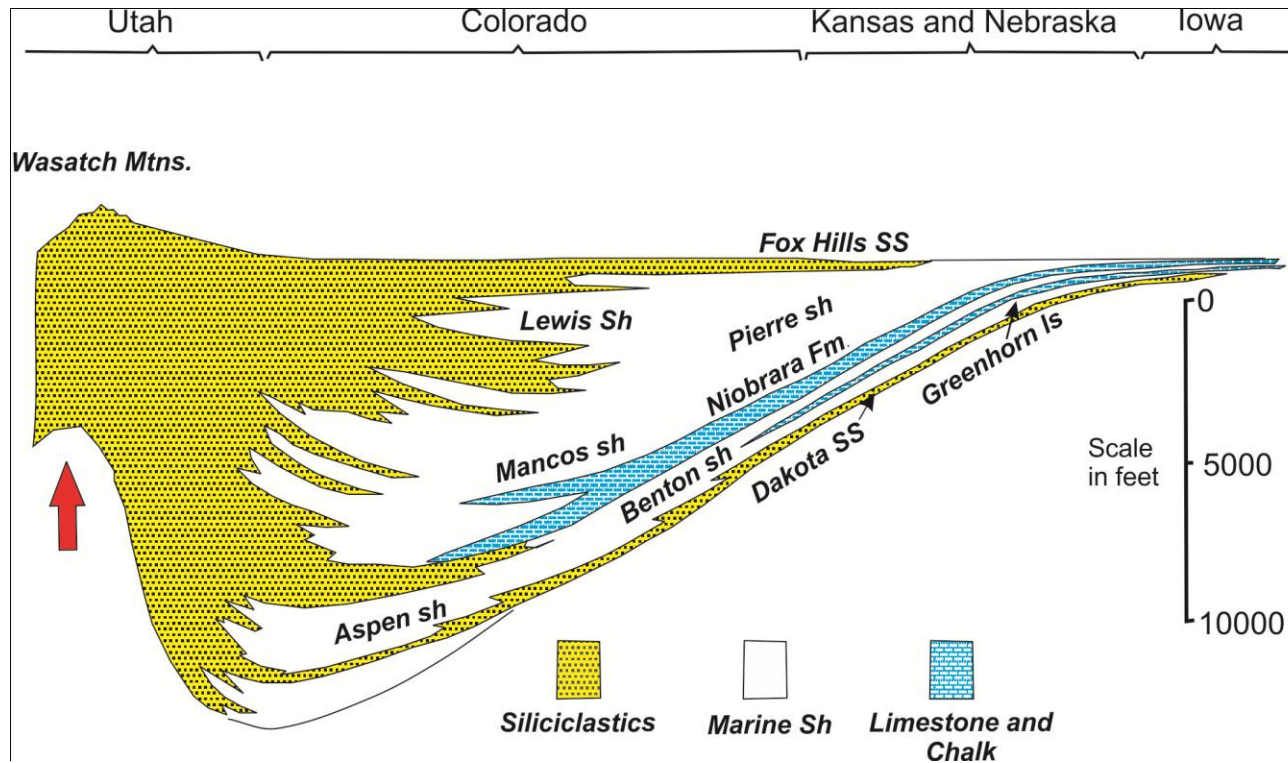
# Summary

---

- Silo Field is located in basin-center setting
- No oil-water contact observed
- Fracturing plays a key role in production
  - Matrix porosity still present so matrix also has a role
- Dominant fracture trend NW-SE (N25-40W)
  - Subsidiary set NE-SW
- Basement faults influence Permian salt dissolution and create monocline
- Left-lateral wrenching suggested
- New wells drilled at flanks of field suggest additional potential!



# Colorado School of Mines Niobrara Consortium



For Information:  
Steve Sonnenberg  
[ssonnenb@mines.edu](mailto:ssonnenb@mines.edu)