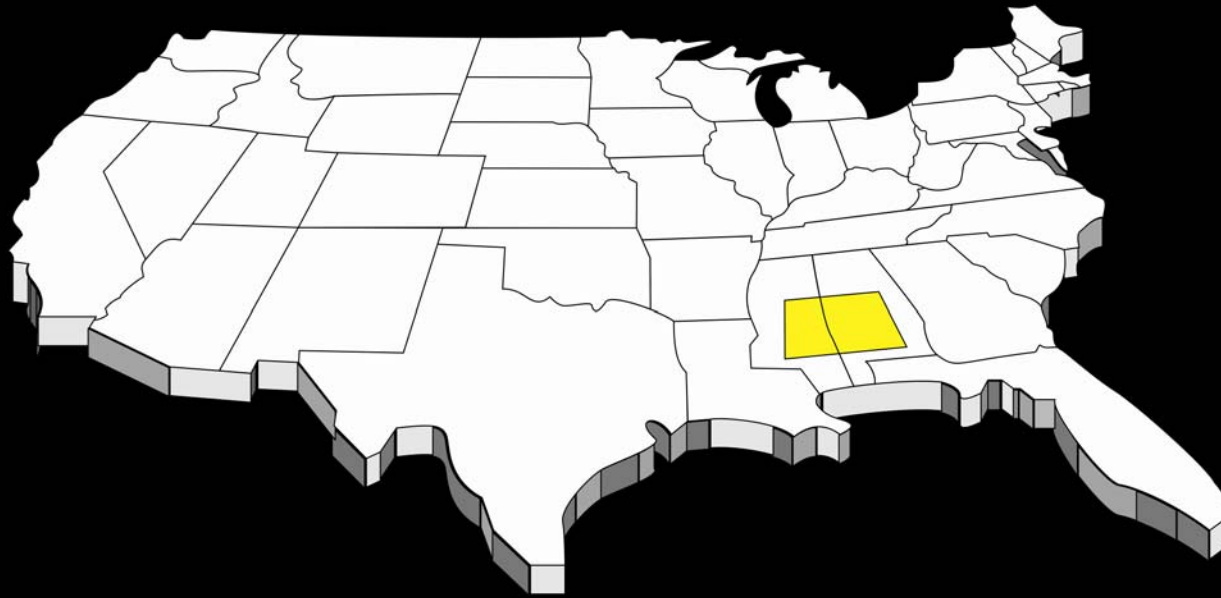


**SALT TECTONICS AS RELATED TO
SEVERAL SMACKOVER FIELDS
ALONG THE NORTHEAST RIM OF THE
ALABAMA-MISSISSIPPI SALT BASIN**



Dudley J. Hughes

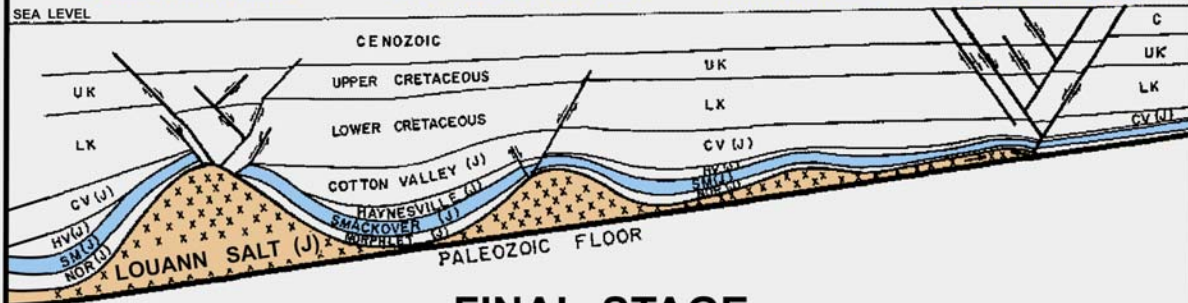
SCHEMATIC CROSS SECTION ILLUSTRATING STRUCTURAL DEVELOPMENT

HIGH RELIEF SALT ANTICLINE
POOL CREEK FIELD

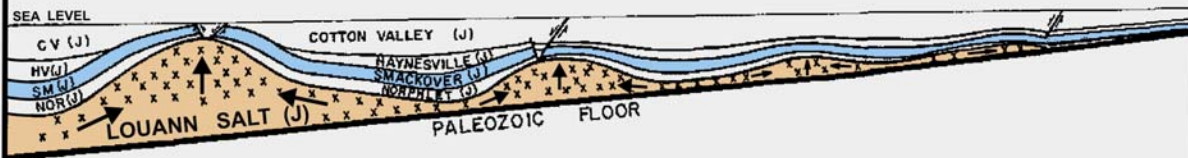
INTERMEDIATE SALT ANTICLINE
CYPRESS CREEK FIELD

LOW RELIEF SALT PILLOW
NANCY FIELD

PERIPHERAL SALT RIDGE
QUITMAN FIELD



FINAL STAGE
LK TO PRESENT



MIDDLE STAGE
HV TO CV DEP.



EARLY STAGE
NORPHLET TO SMACKOVER DEP.

SW

HIGH RELIEF SALT ANTICLINE POOL CREEK FIELD

NE

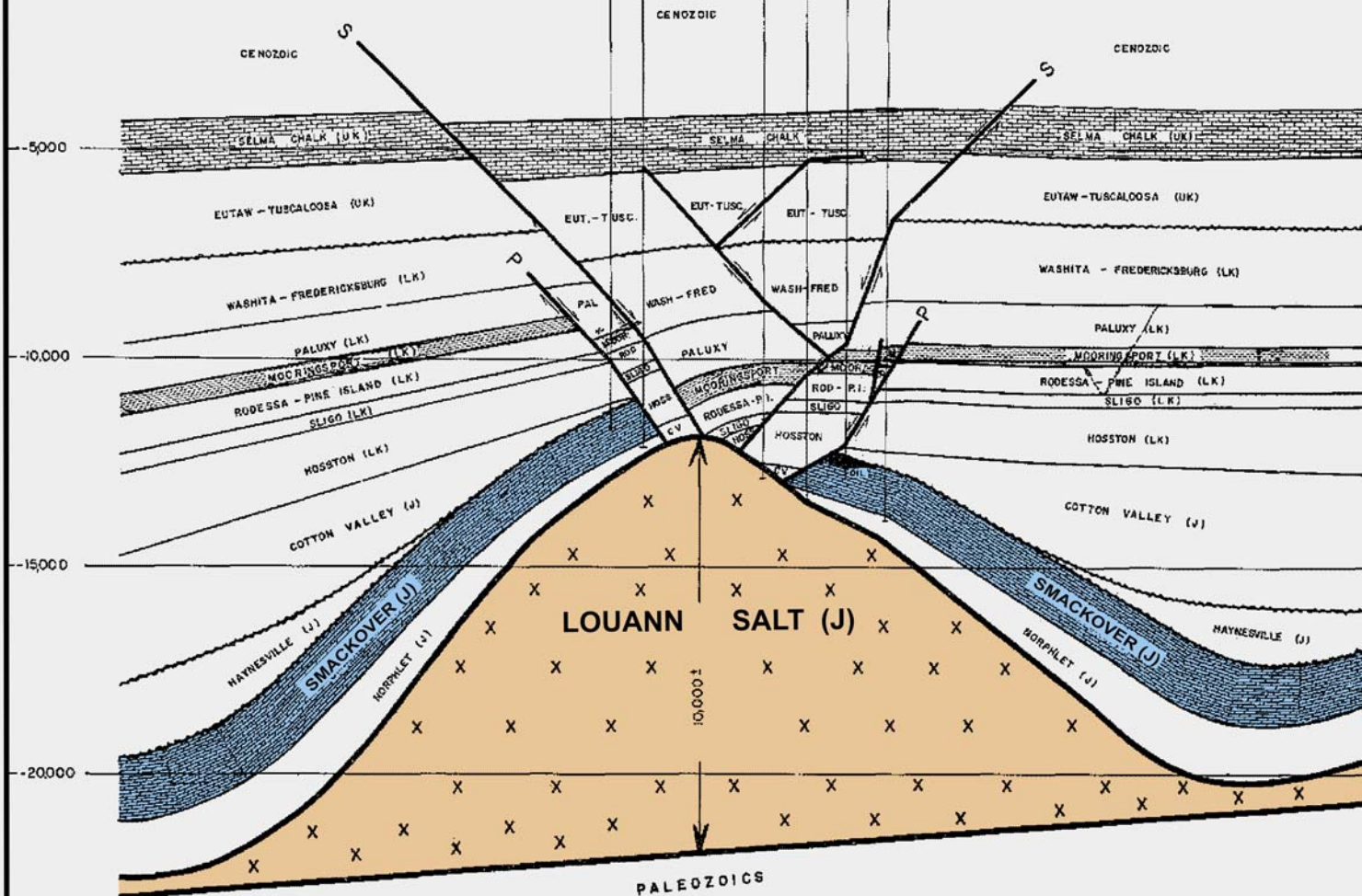
D

JONES COUNTY, MISSISSIPPI

D'

SEA LEVEL

TRANS-STATE 27-3 POLET 1ERRAN ERICKSON 261M 22-4 HAYS PLACE BLUE 22-4 PLACE WOODS 22-1



SCALE
0 1000 2000
VERTICAL SCALE = HORIZONTAL SCALE

MAY 25, 1948
DUNCAN J. HUGHES

W

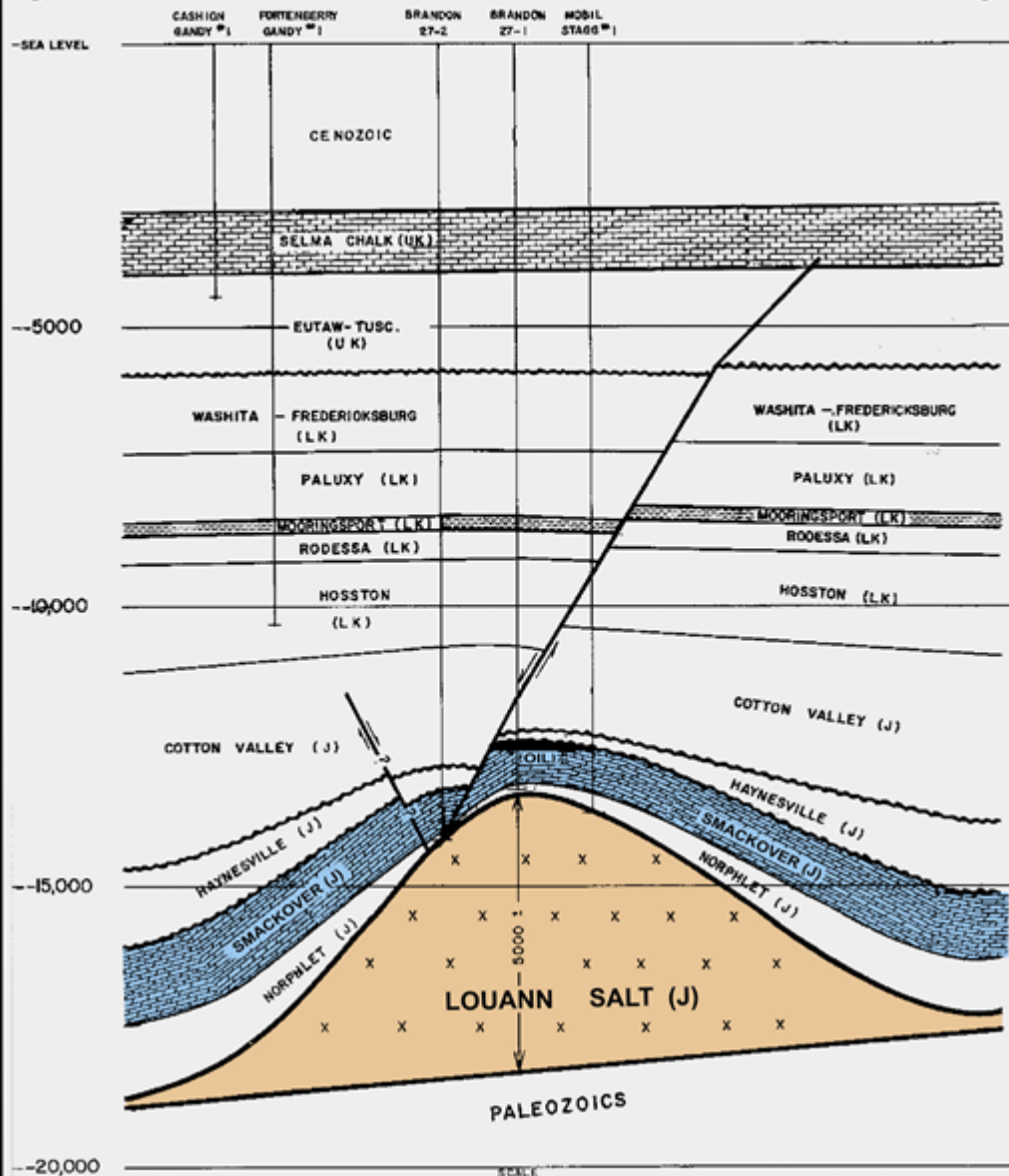
E

INTERMEDIATE SALT ANTICLINE CYPRESS CREEK FIELD

WAYNE COUNTY, MISSISSIPPI

C

C'



SCALE
0 1000 2000 3000
VERTICAL SCALE = HORIZONTAL SCALE

MAY 23, 1968
DUDLEY J. HUGHES

SSW

LOW RELIEF SALT PILLOW

NNE

B

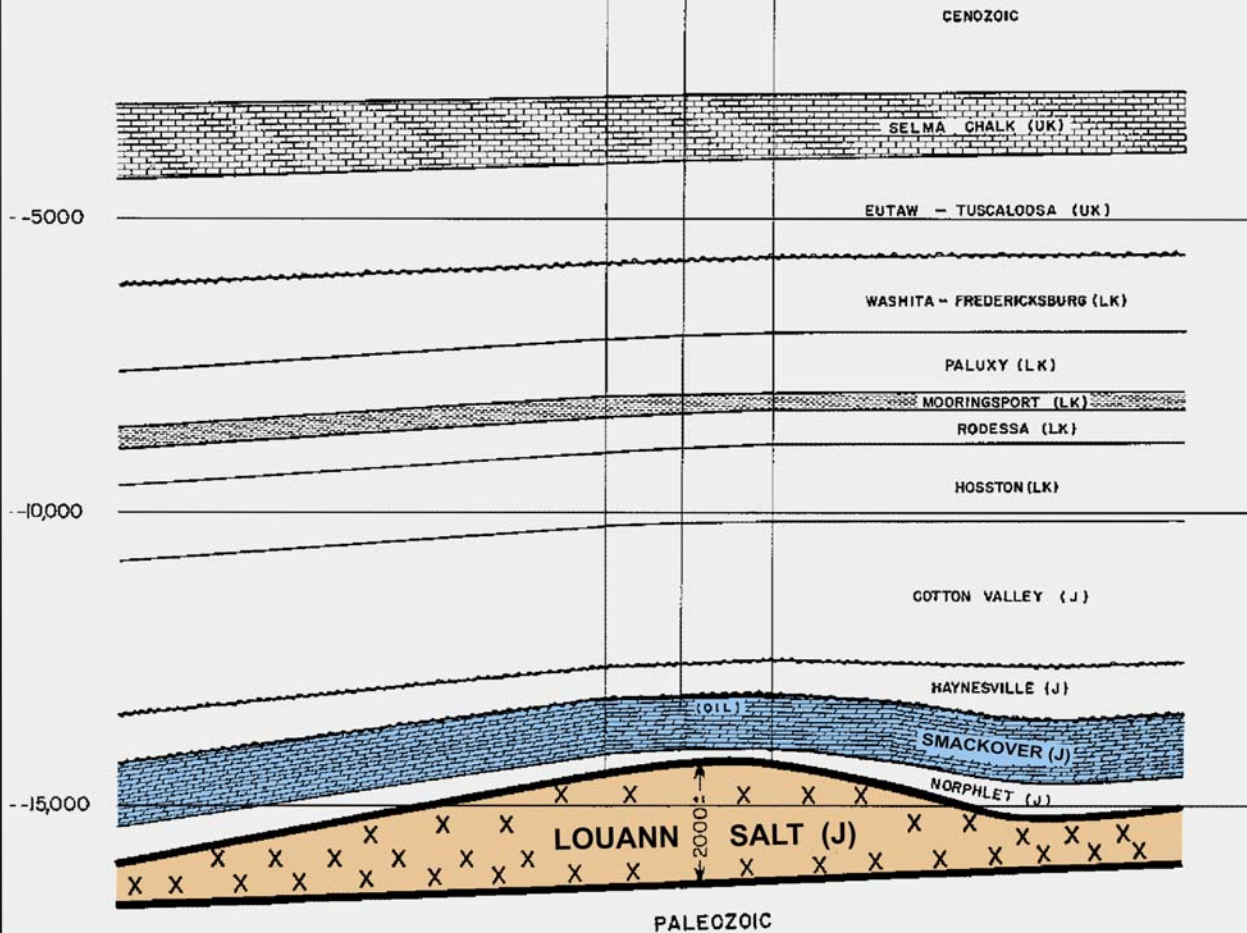
NANCY FIELD

CLARKE COUNTY, MISSISSIPPI

B'

SEA LEVEL

GETTY	PLACID	PLACID
MASONITE 7	MENASCO 11-4	ARLEDGE 11-10



SCALE

0 1000 2000 3000

VERTICAL SCALE = HORIZONTAL SCALE

MAY 29, 1968
DUDLEY J. HUGHES

SSW

LOW RELIEF PERIPHERAL SALT RIDGE

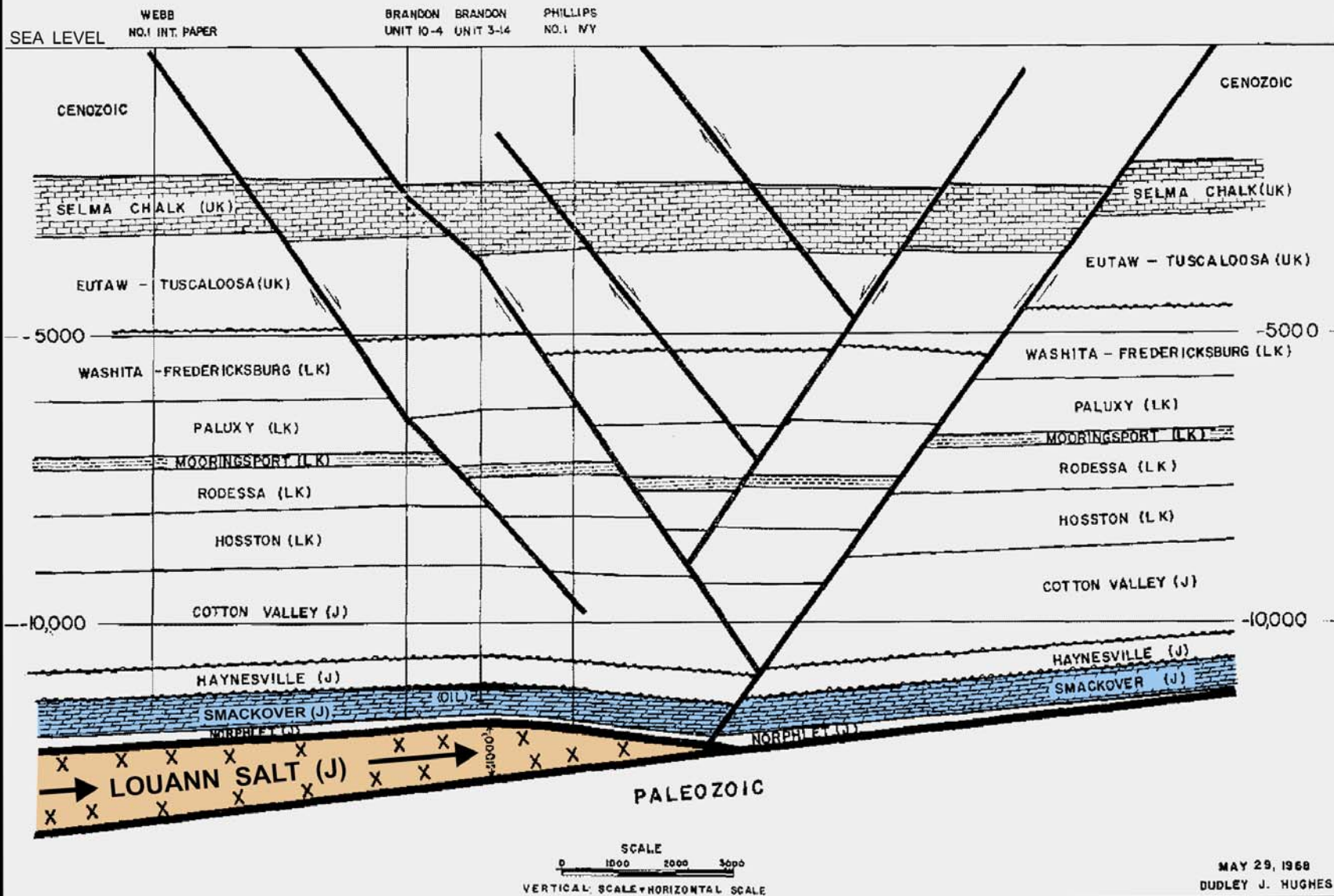
NNE

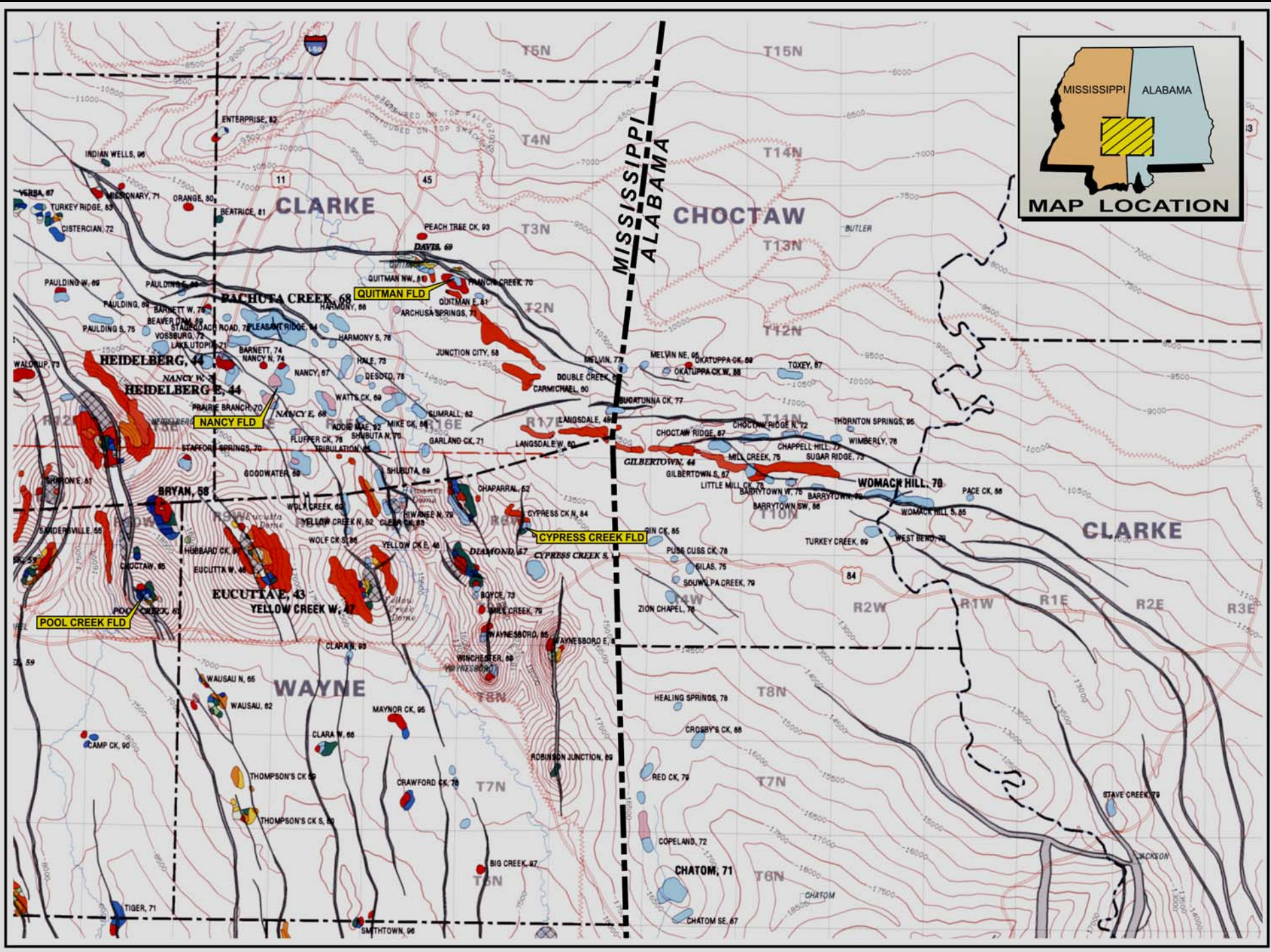
QUITMAN FIELD

CLARKE COUNTY, MISSISSIPPI

A

A'





CLARKE

CHOCTAW

WAYNE

CLARKE

CHATOM, 71

HEIDELBERG, 44

EUCUTIAE, 43

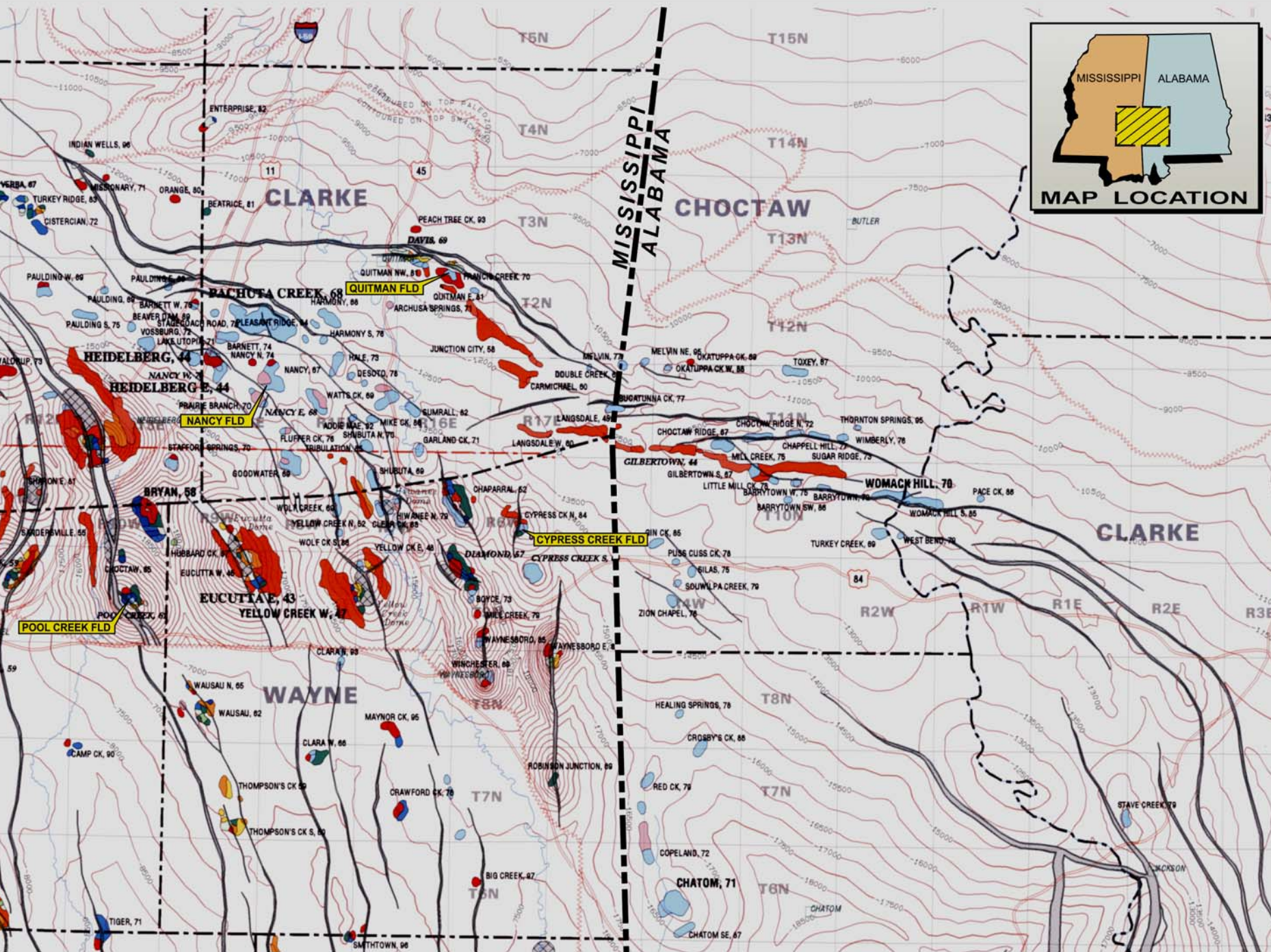
YELLOW CREEK W, 47

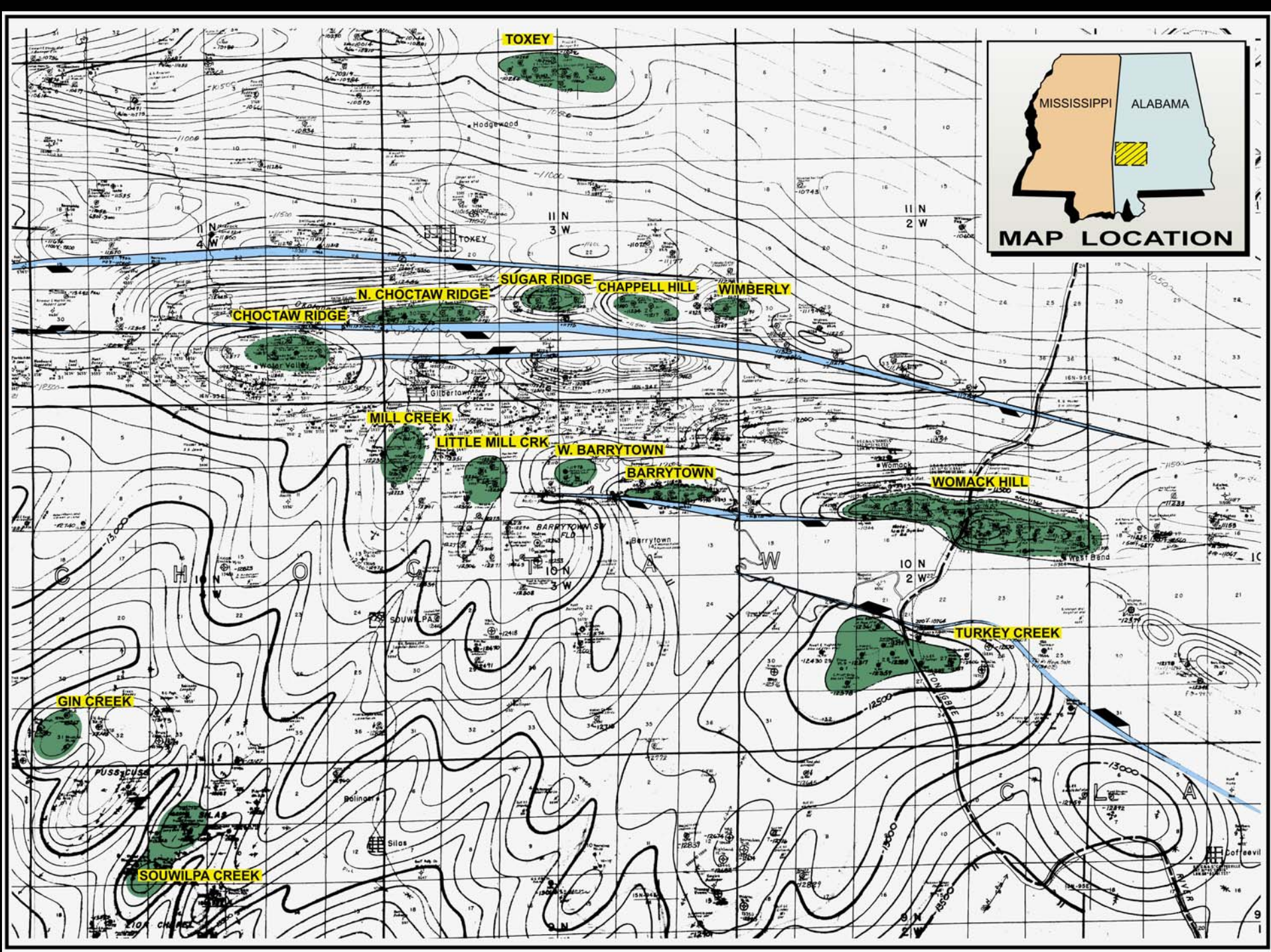
CYPRESS CREEK FLD

POOL CREEK FLD

QUITMAN FLD

NANCY FLD





TOXEY

CHOCTAW RIDGE

N. CHOCTAW RIDGE

SUGAR RIDGE

CHAPPELL HILL

WIMBERLY

MILL CREEK

LITTLE MILL CRK

W. BARRYTOWN

BARRYTOWN

WOMACK HILL

TURKEY CREEK

GIN CREEK

SOUWILPA CREEK



SALT DEPOSITION



Wedgeout of Salt

Salt Flow

