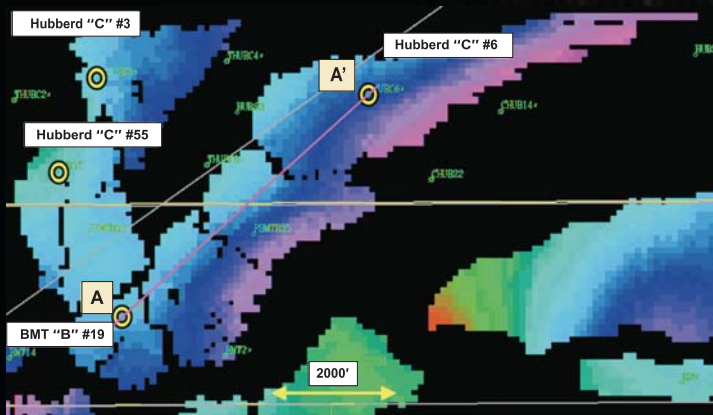


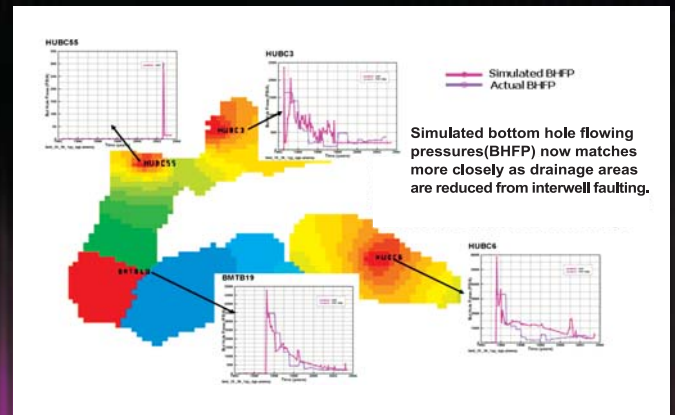
## Case Study #1 (continued)

By interpreting tiny offsets and flexures in seismic events as possible faults, the seismic interpreter was able to segment the objective reservoir into four blocks (see Line A-A'). The 3-D cellular model was revised to incorporate the new barriers, and the simulation was run again. This time the pressure and production history of the wells matched the simulation model closely. This provided the confidence necessary for proposing additional wells to fully develop the block. Prior to the revised interpretation, the presence of the existing, nearly depleted wells in the block would have discouraged any additional drilling. Results of two new wells demonstrate that the revised interpretation was correct. This 3-D interpretation would not have been made without the results of the simulation, which suggested that additional faulting was present.

### 7 Lobo 6 Revised Structural Interpretation



### 8 Numerical Simulation Results - With Faulting



## Post-Drill Results

### 9

