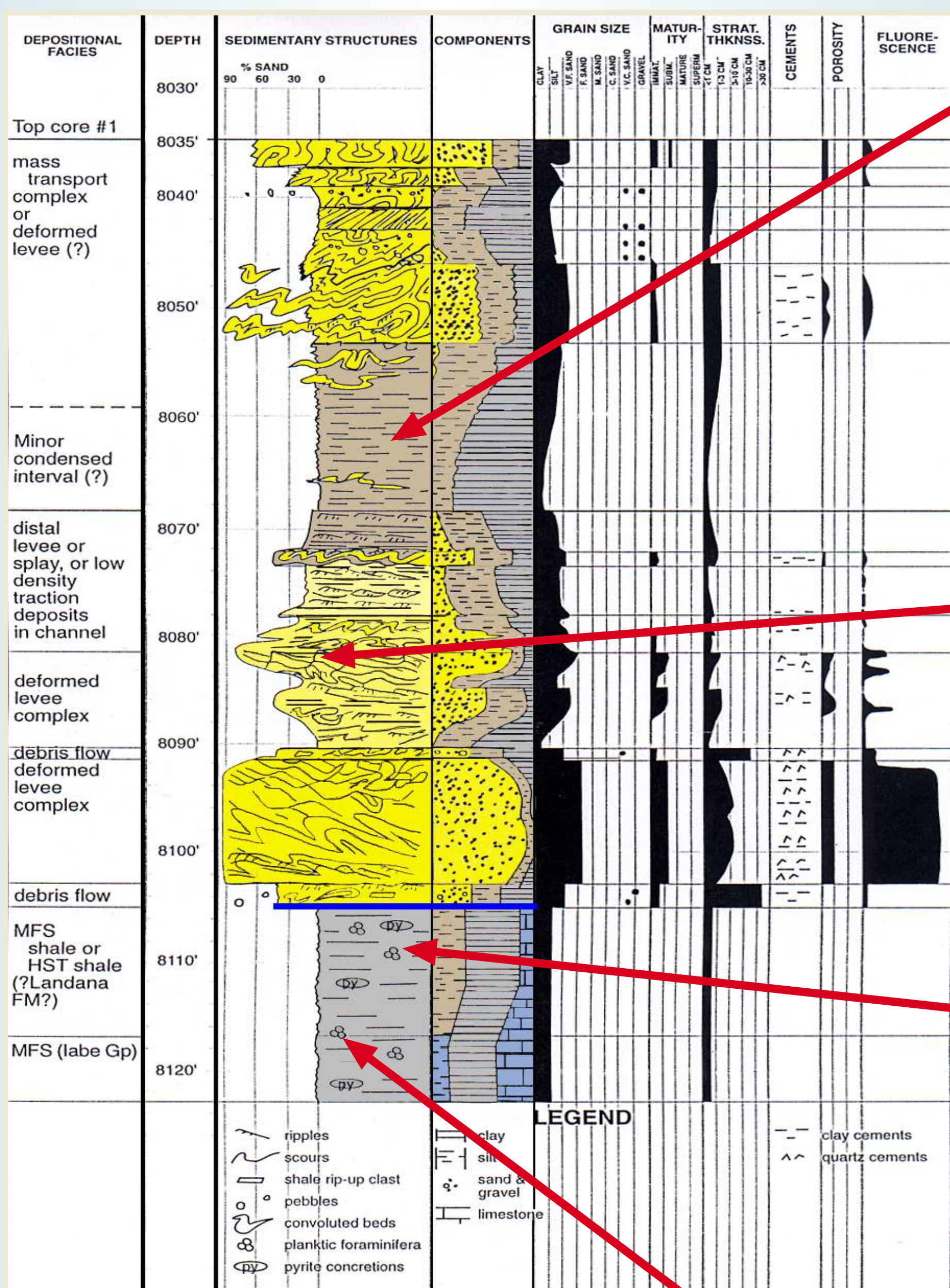


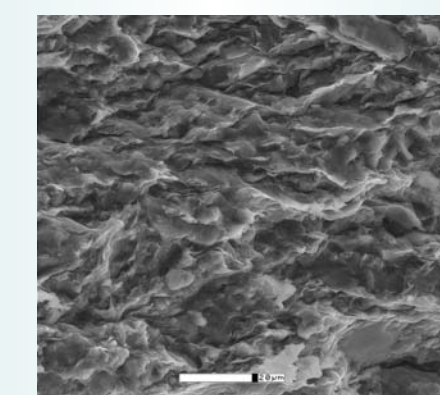
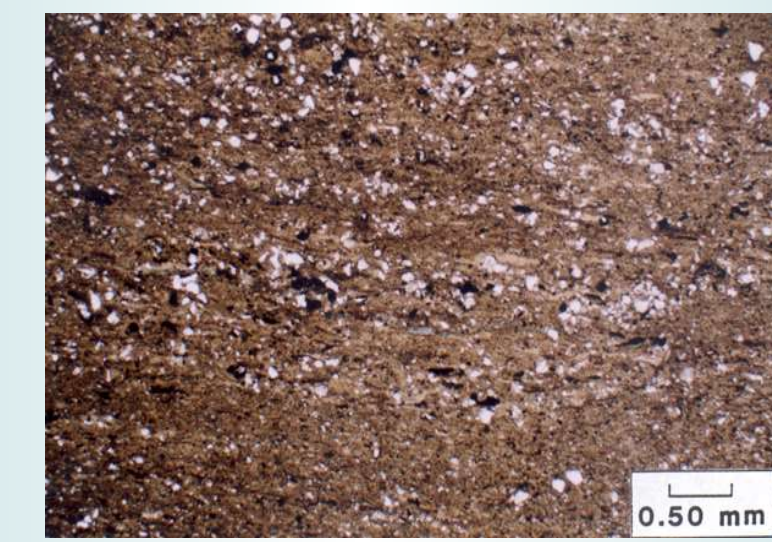
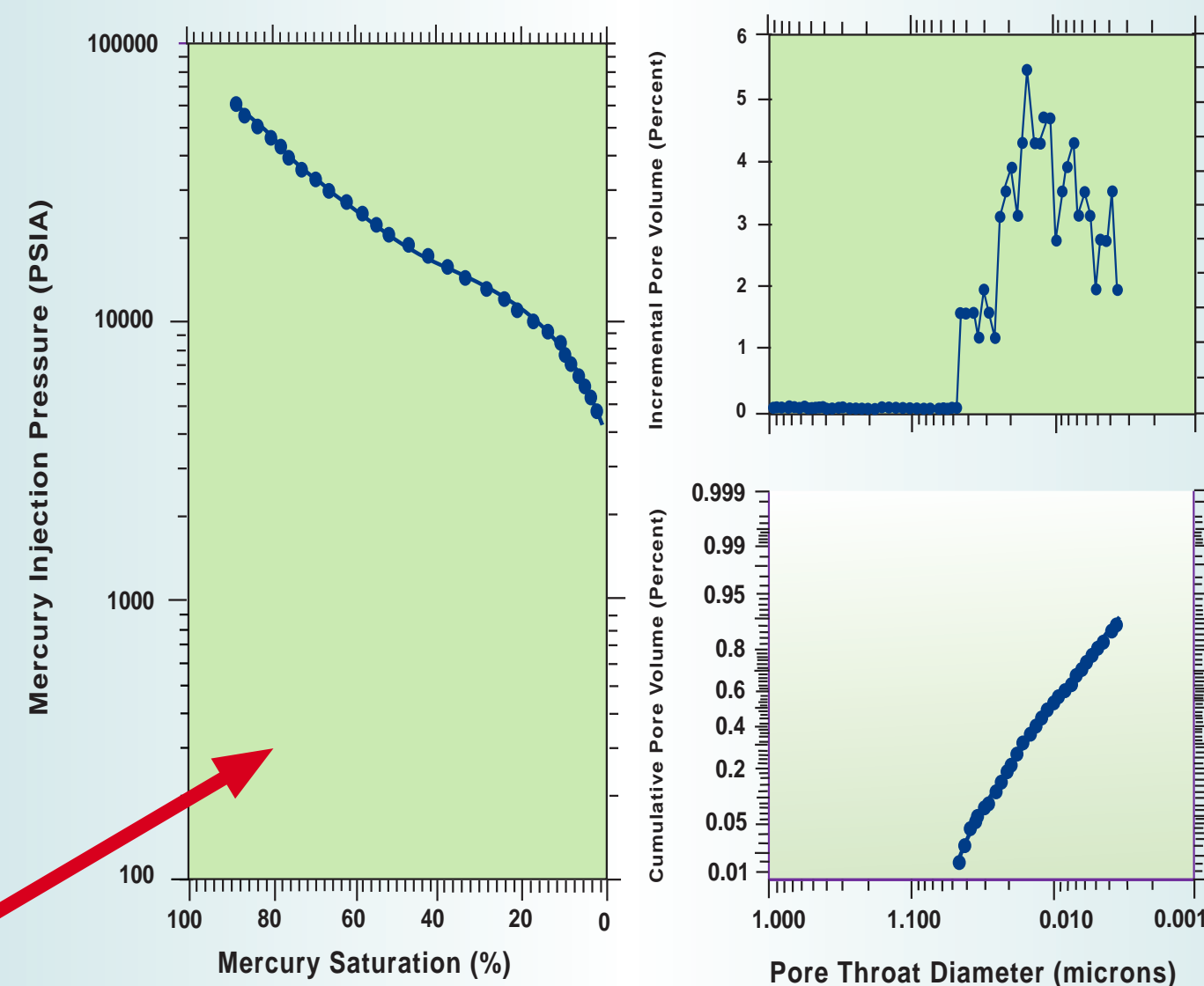
West Africa Deepwater

This core penetrated sand-rich LST that is encased in marine shales with excellent seal character. The "best" seal (8,063 ft.) overlies this LST; this fissile shale represents a minor (probable 4th-order) condensed interval. The bottom seal is provided by the fossiliferous black shale (mfs/HST) at 8,110 feet. The sealing capacity of these silty shales has been enhanced by calcite cementation.

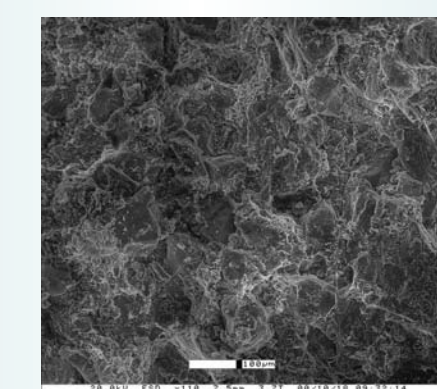
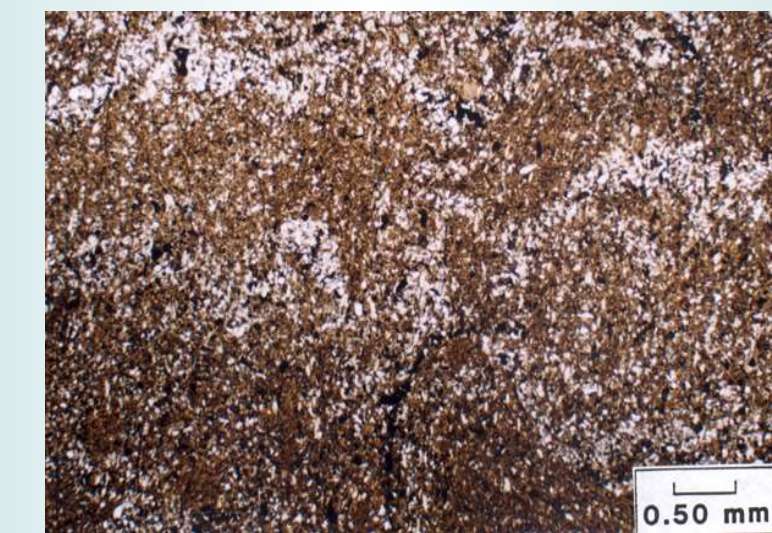
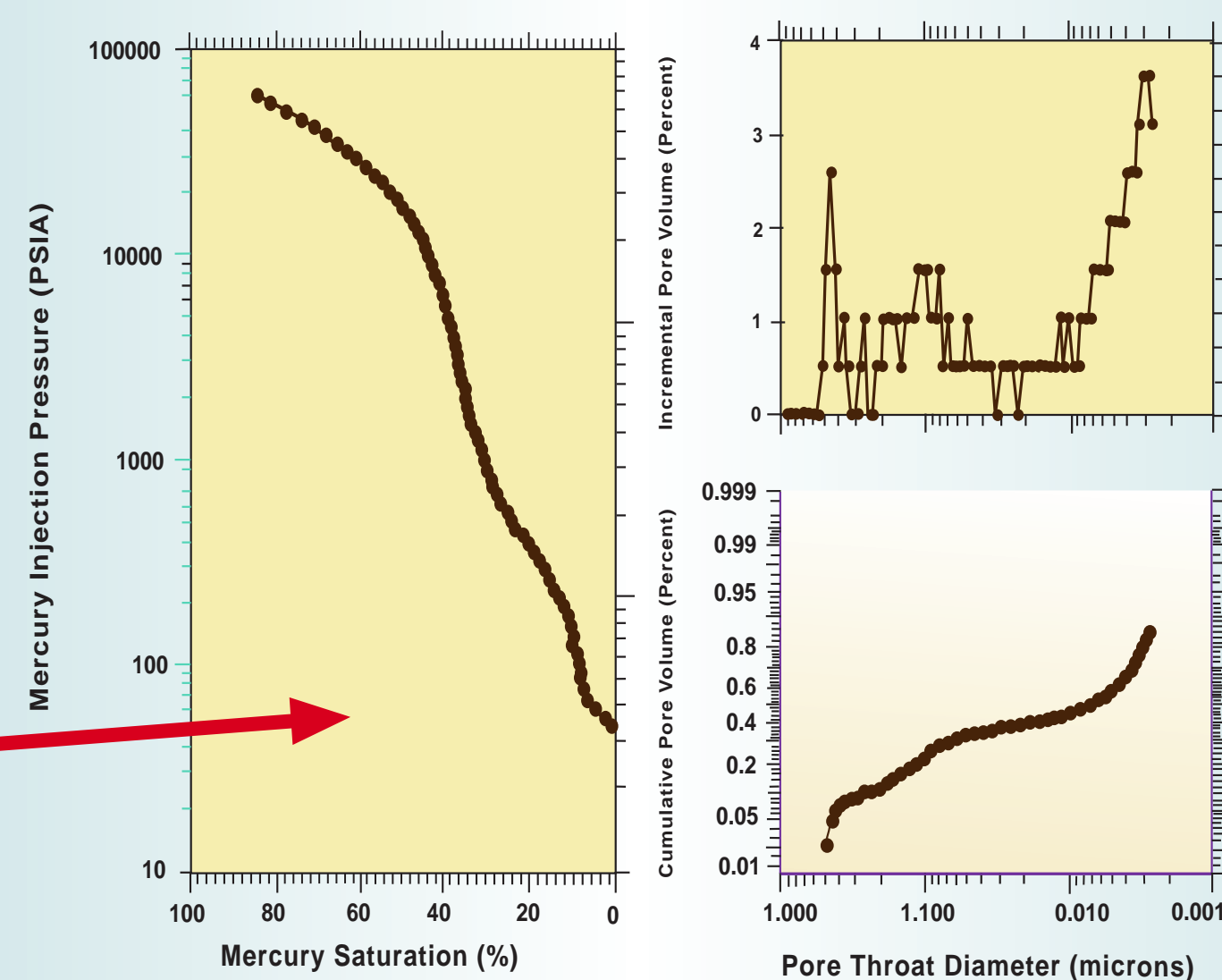
West Africa Example 2



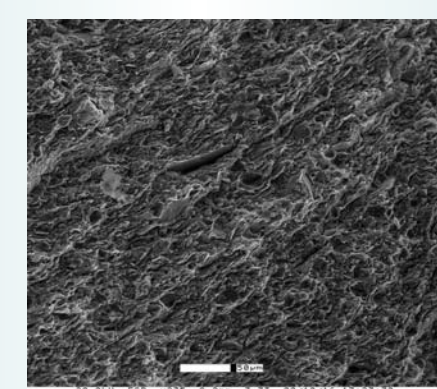
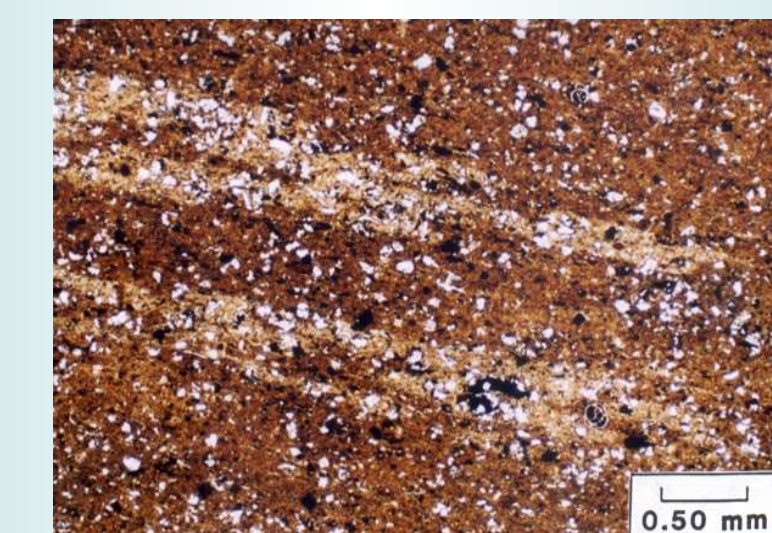
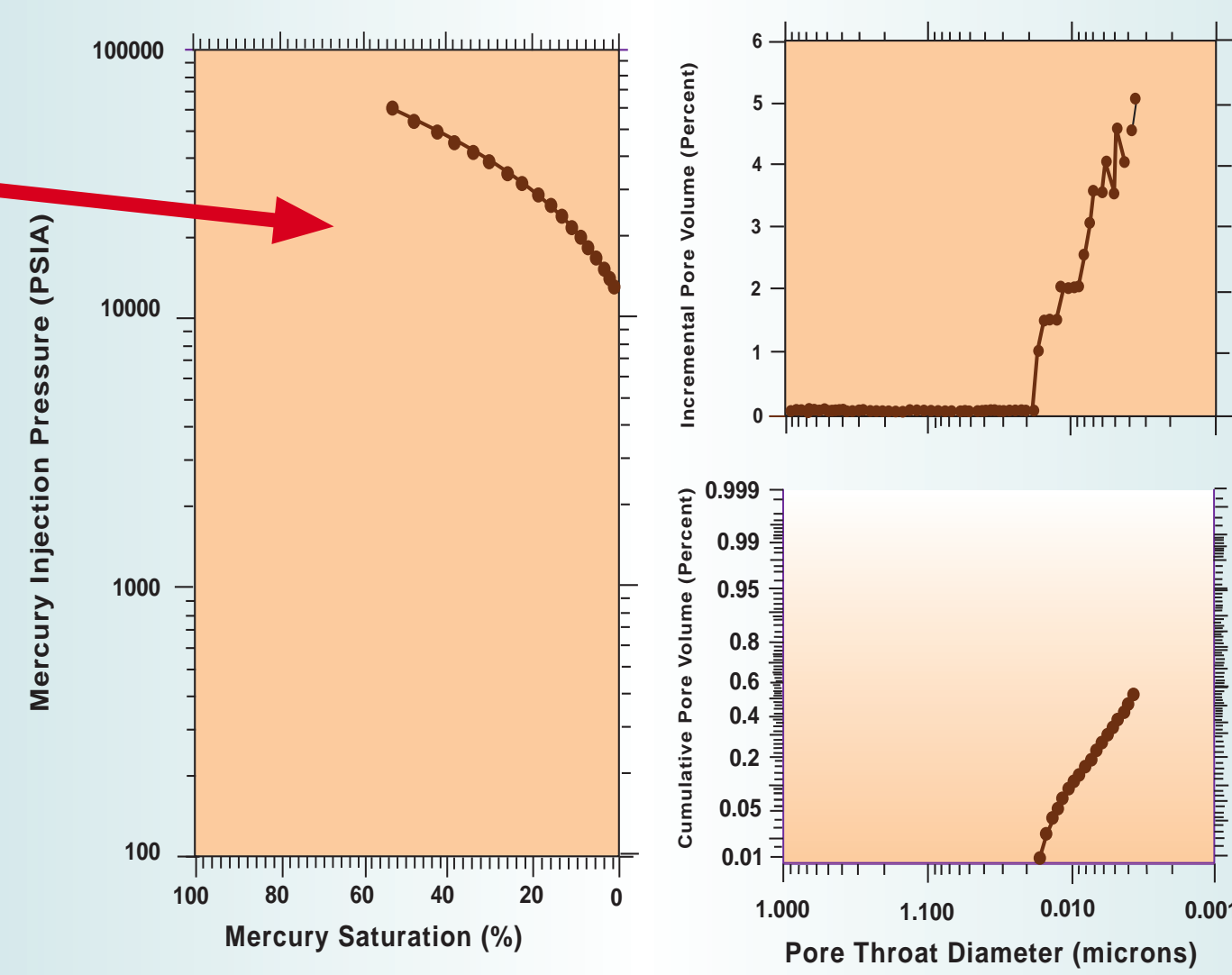
Seal Type 3



Seal Type 5



Seal Type 2



Seal Type 6

