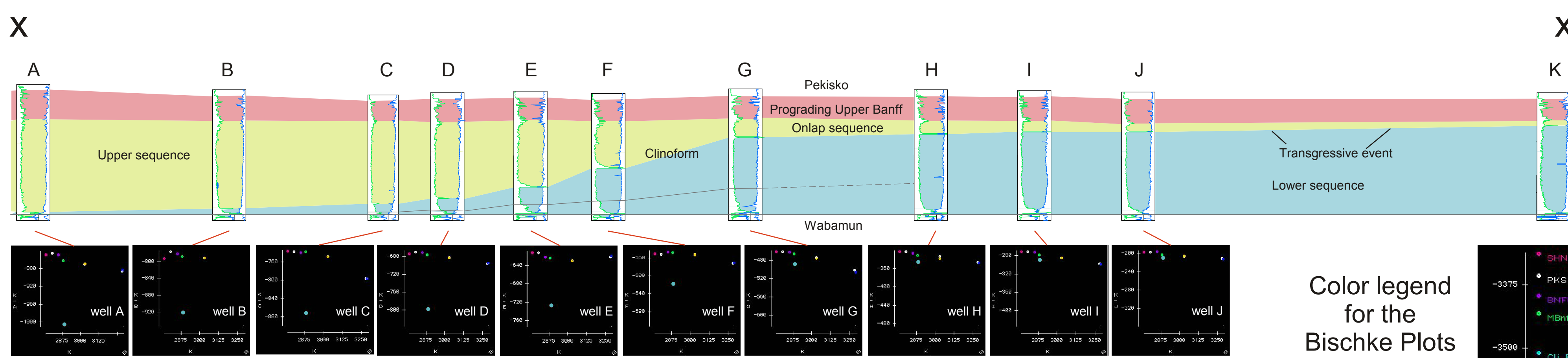


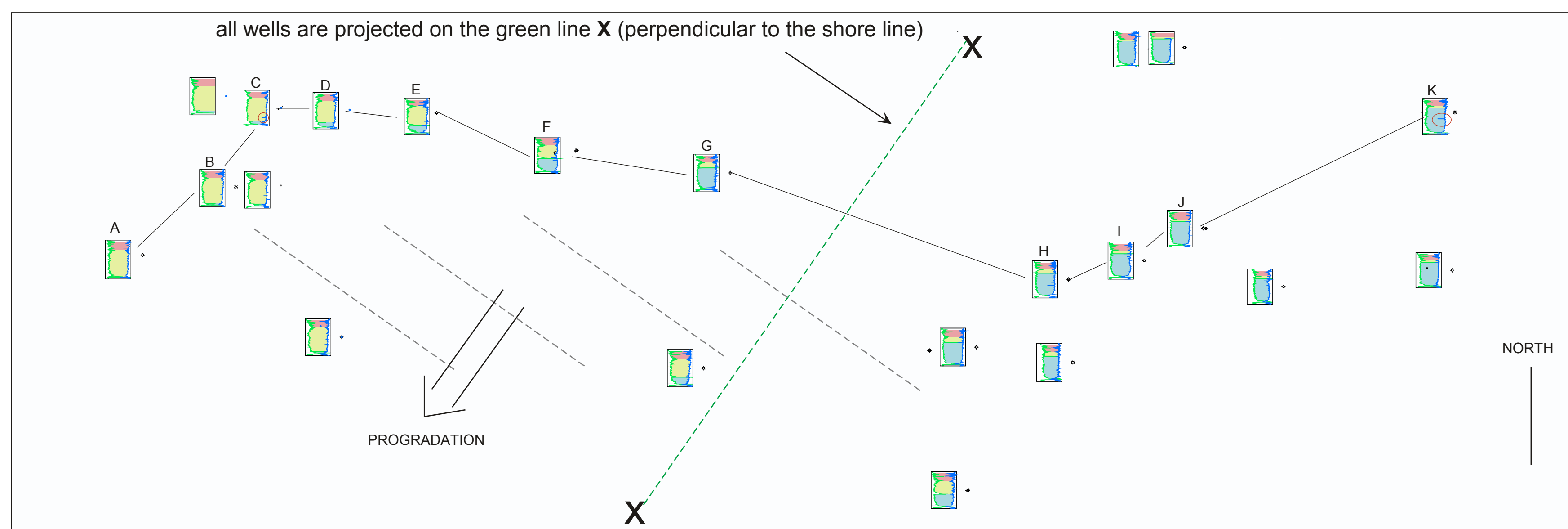
The MBPA in a very complex part of the Western Canada Basin

When the area under study is very complex, a map display of the various Bischke plots can be very useful. Thus the tectonic activity of the faults can be assessed in terms of timing and intensity. The example to the left was a first glance at a new area. The findings from the MBPA have been corroborated by seismic.

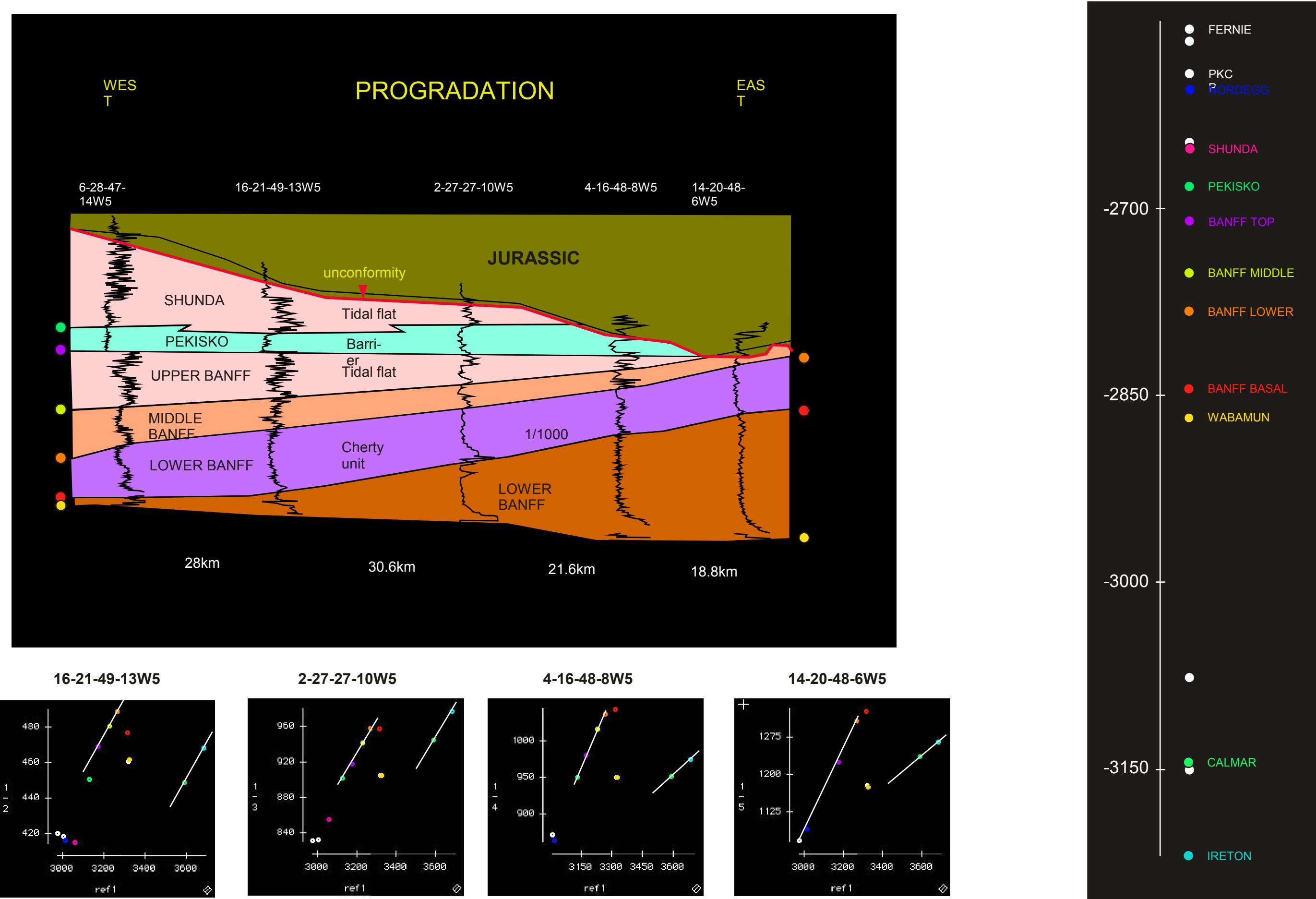


MBPA expression of a Clinoform in the Banff Formation of Alberta Central Plains

Expression of a clinoform on a series of Bischke Plots (MBPA)



This is a clinoform exceptionally well expressed by an outstanding gamma-ray kick. This is the best clinoform example within the Banff Formation ever seen by the authors. This example shows that it is sometimes vital to have a sedimentological understanding of the units involved and to have a dense enough geographical coverage. If the wells had been sparse, the MBPA would have given no definite solutions.



Lower Mississippian progradation in Alberta Central Plains

The MBPA was performed on the example to the left to understand the expression of a prograding system in a series of Bischke plots. The previous example had the same aim but within a single formation. These two examples show the need to have a geological/sedimentological understanding in order to properly interpret some of the Bischke plots.

These two case examples (progradation and clinoform) are taken and modified from the first author's Ph.D. work which have been presented in a different form at the BSRG of 1990 in Reading (UK).