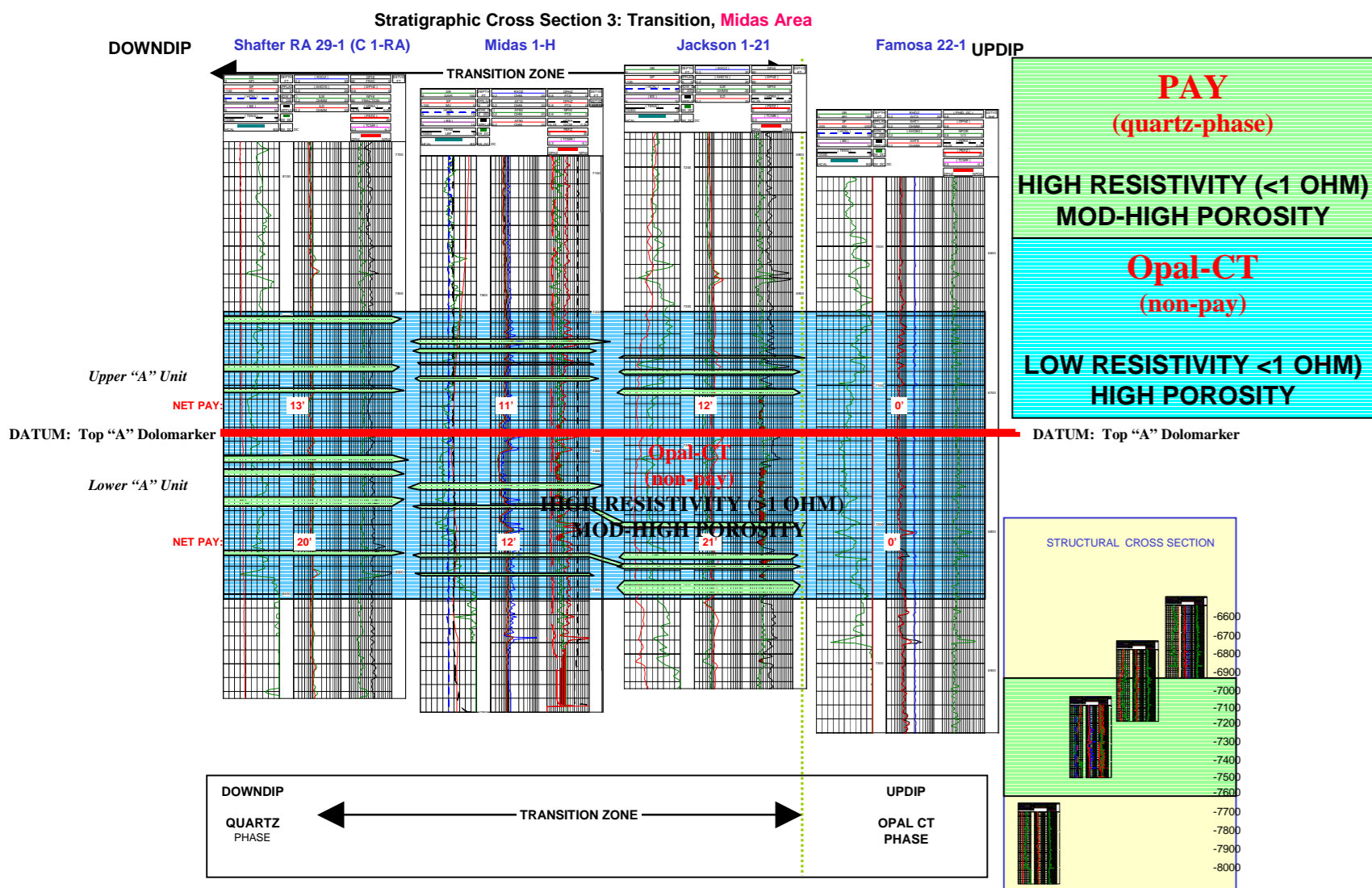


Dip Cross Section, Midas Area

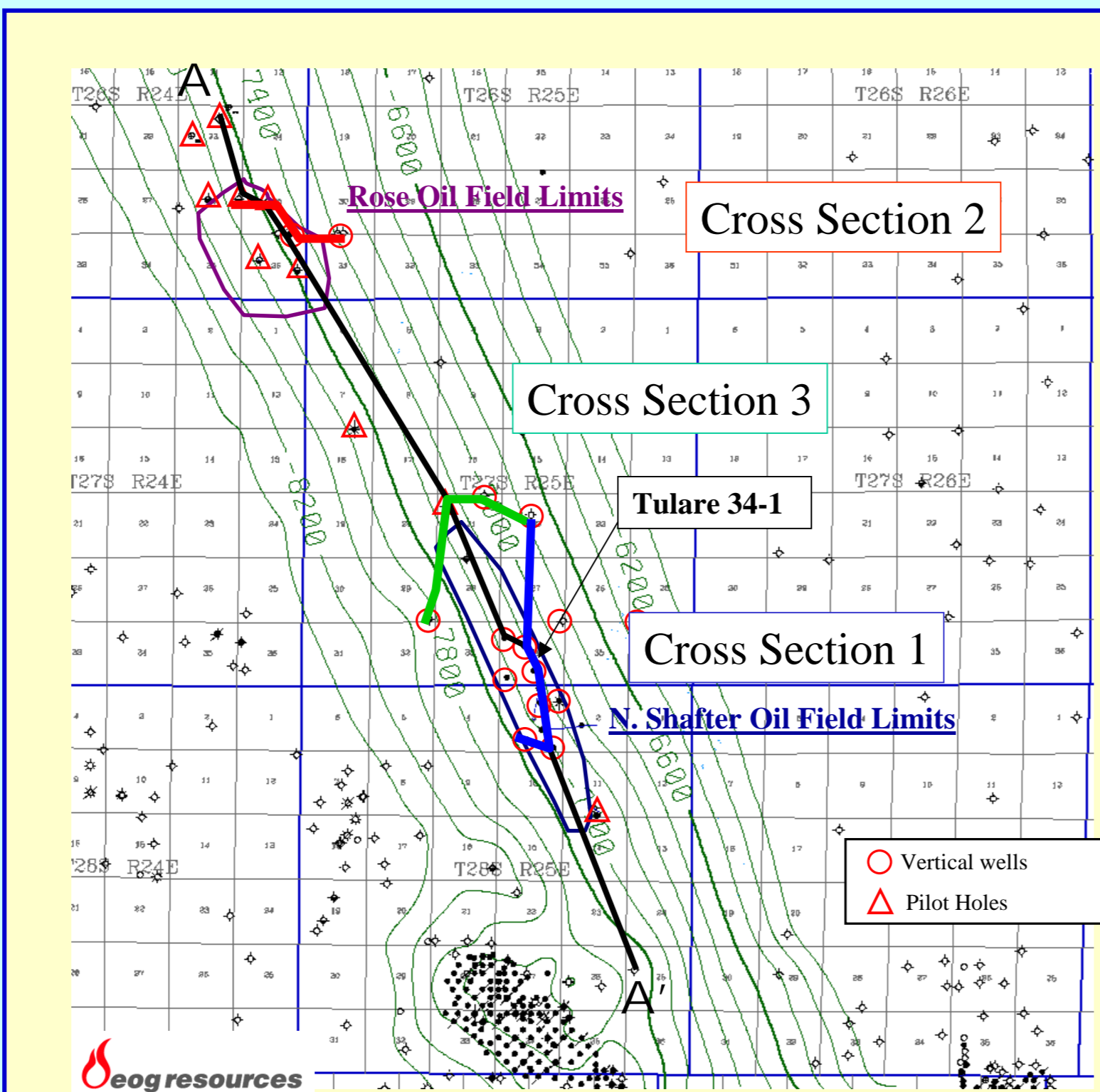


STRUCTURAL AND STRATIGRAPHIC CONTROLS ON RESERVOIR DISTRIBUTION

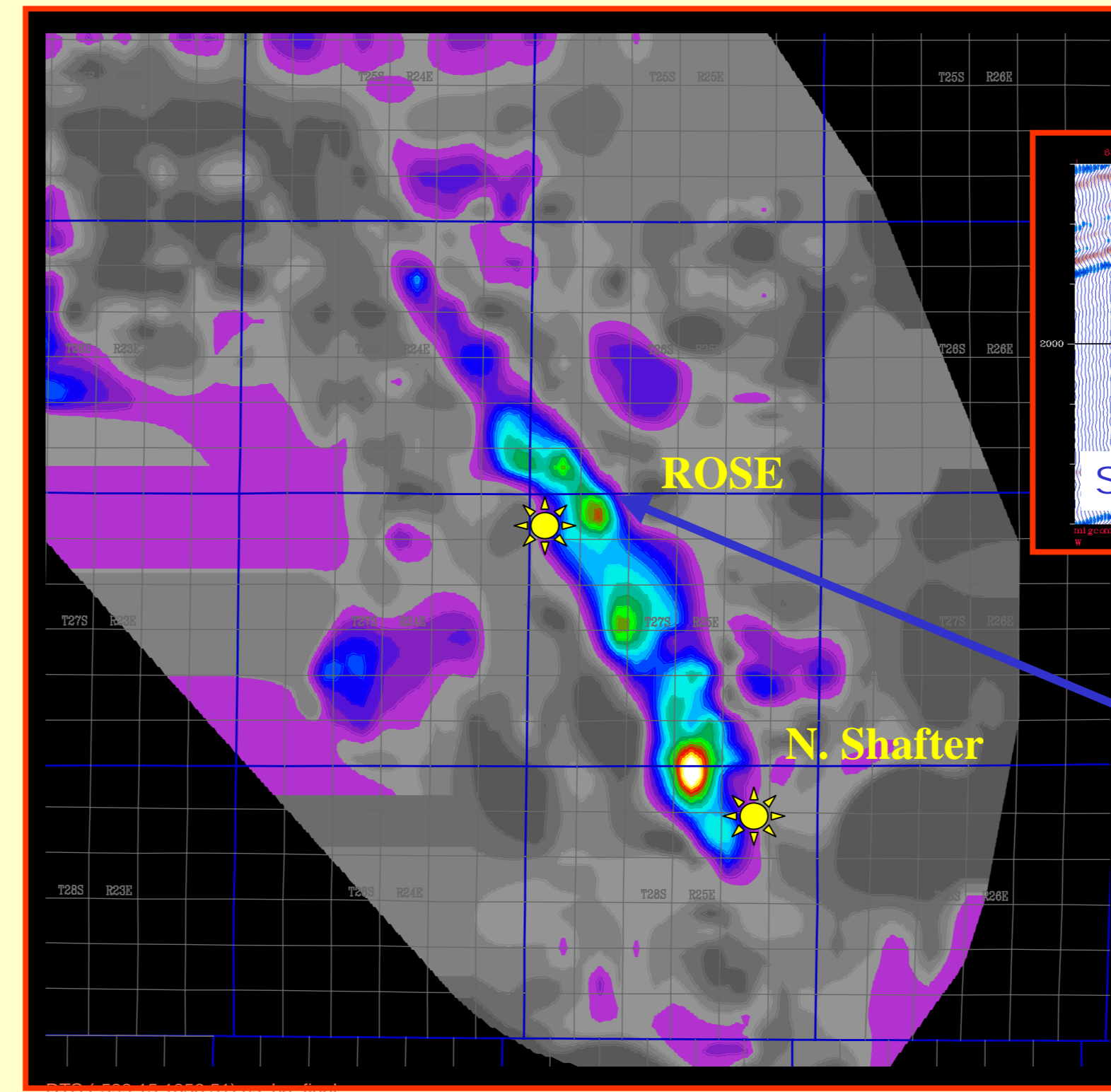
- **Structure:**
 - Monclinal dip, approx 4° to Southwest

Heterogeneous Reservoir a function of:

- Clay Content
- Depth & Temperature



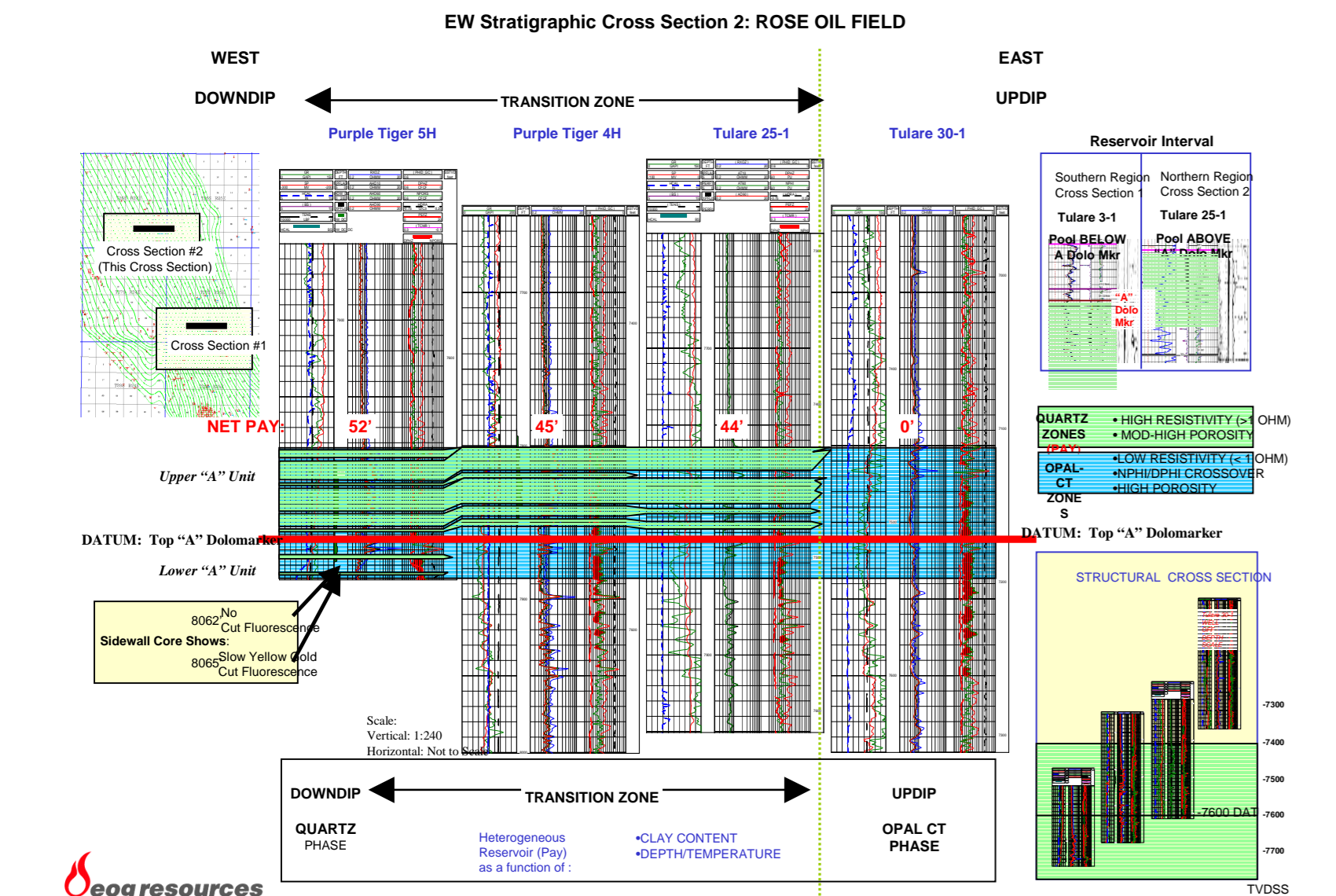
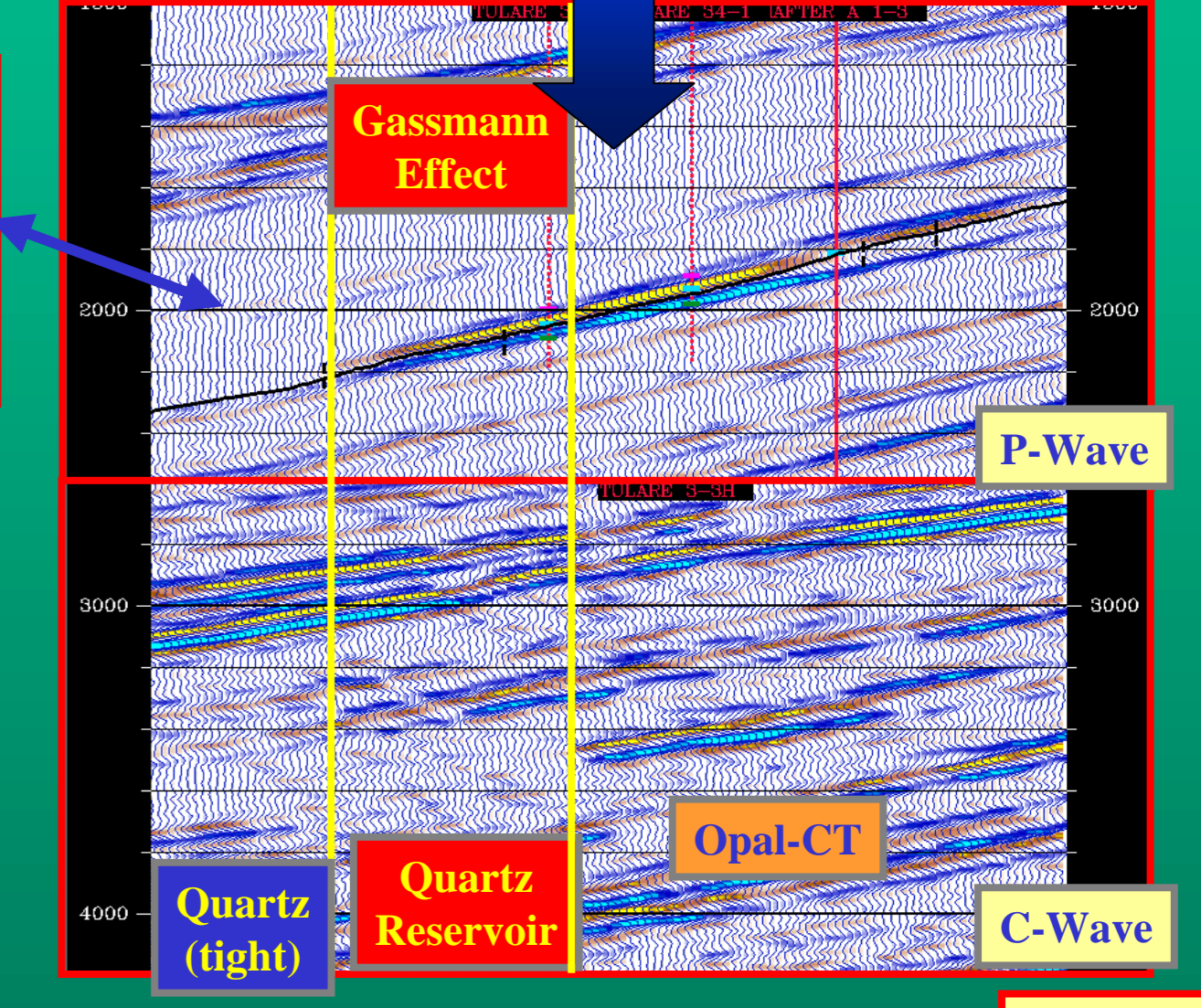
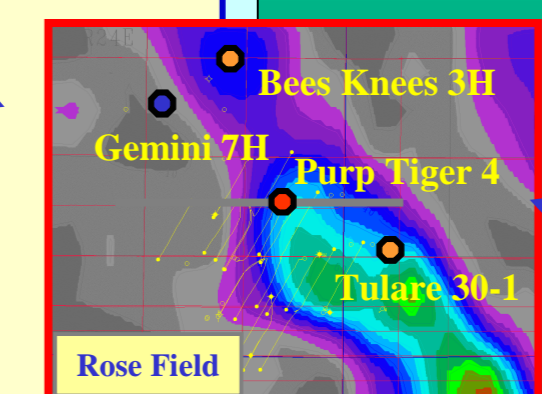
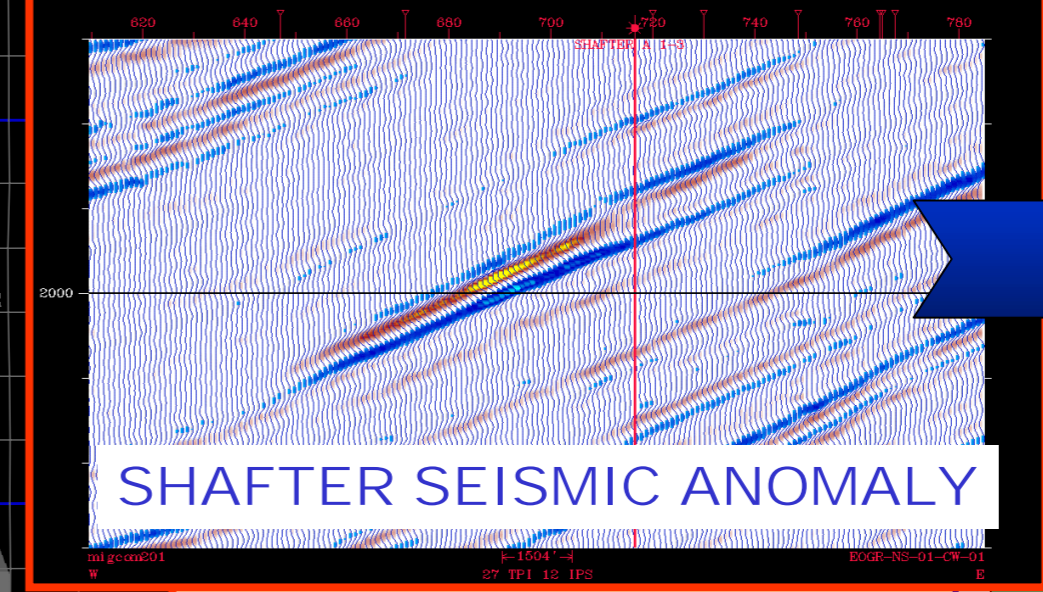
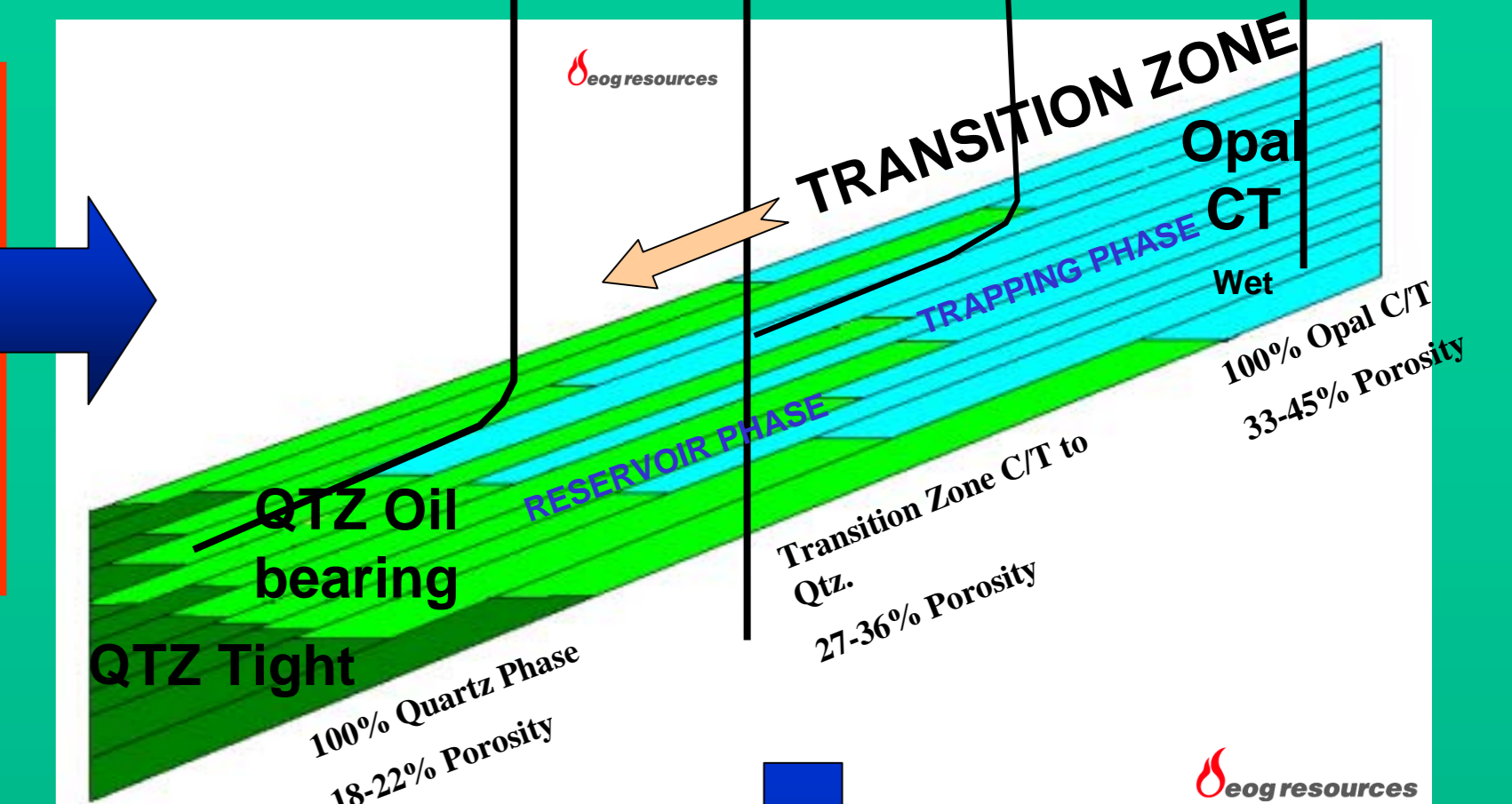
STRUCTURE: Top of the McLure Shale
Cl: 200'



North Shafer Seismic Anomaly

SEISMIC IMAGES RESERVOIR DISTRIBUTION

Seismic Ties to Reservoir Distribution



Dip Cross Section, N. Shafer Field

