

Figure 1. Vectorized map of sedimentary provinces of Middle East and Europe, along with parts of Asia and Africa (from map of St. John, Bally, and Klemme, 1984), with productivity or potential shown by color (red or pink with giant field(s), green with subgiant field(s), yellow nonproductive).

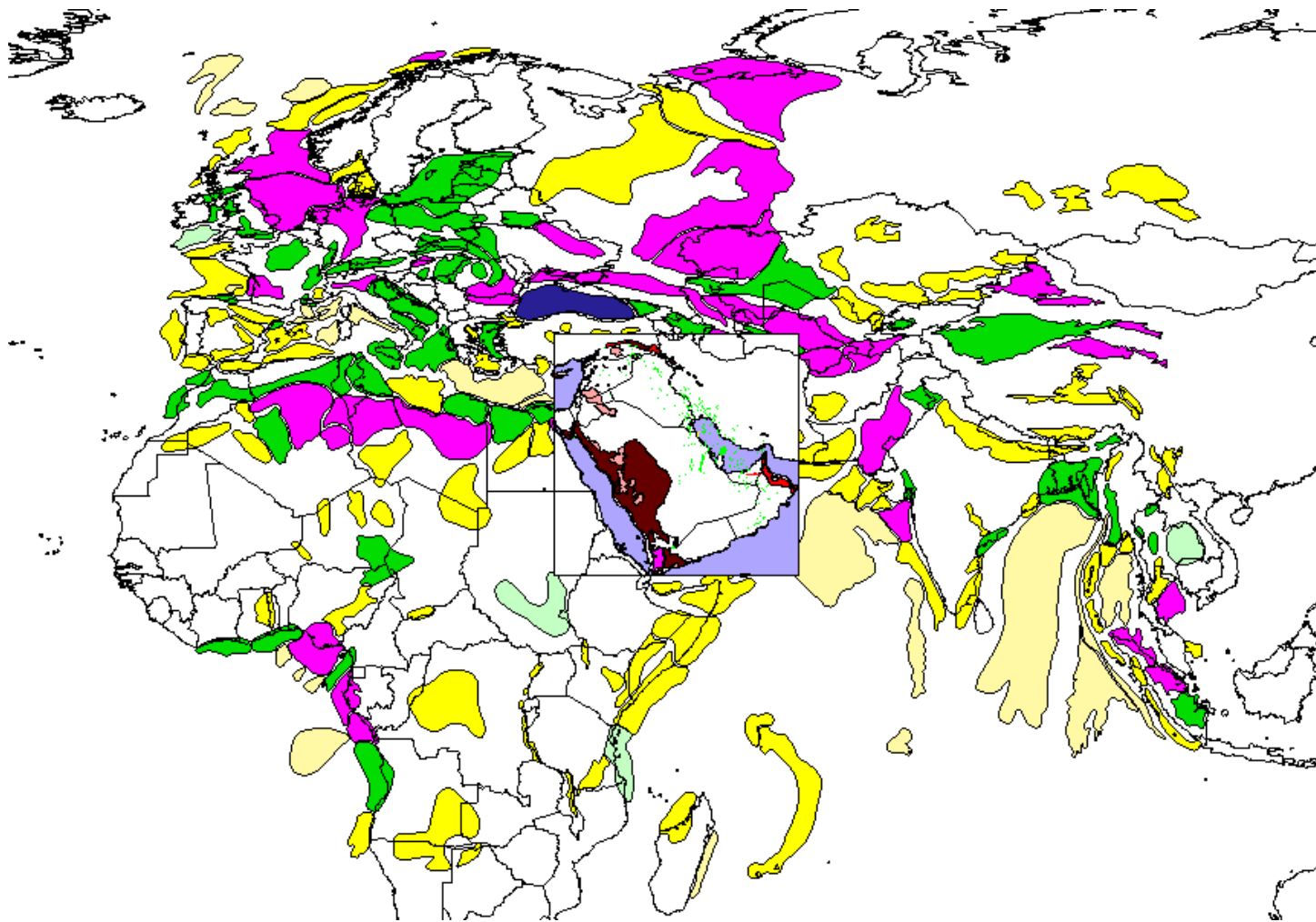


Figure 2. Vectorized map of oil and gas fields of the Arabian Plate, with outcrops of basement rocks and ophiolites (from Beydoun, 1991), as overlay to map of sedimentary provinces. Click on inset map for enlargement.

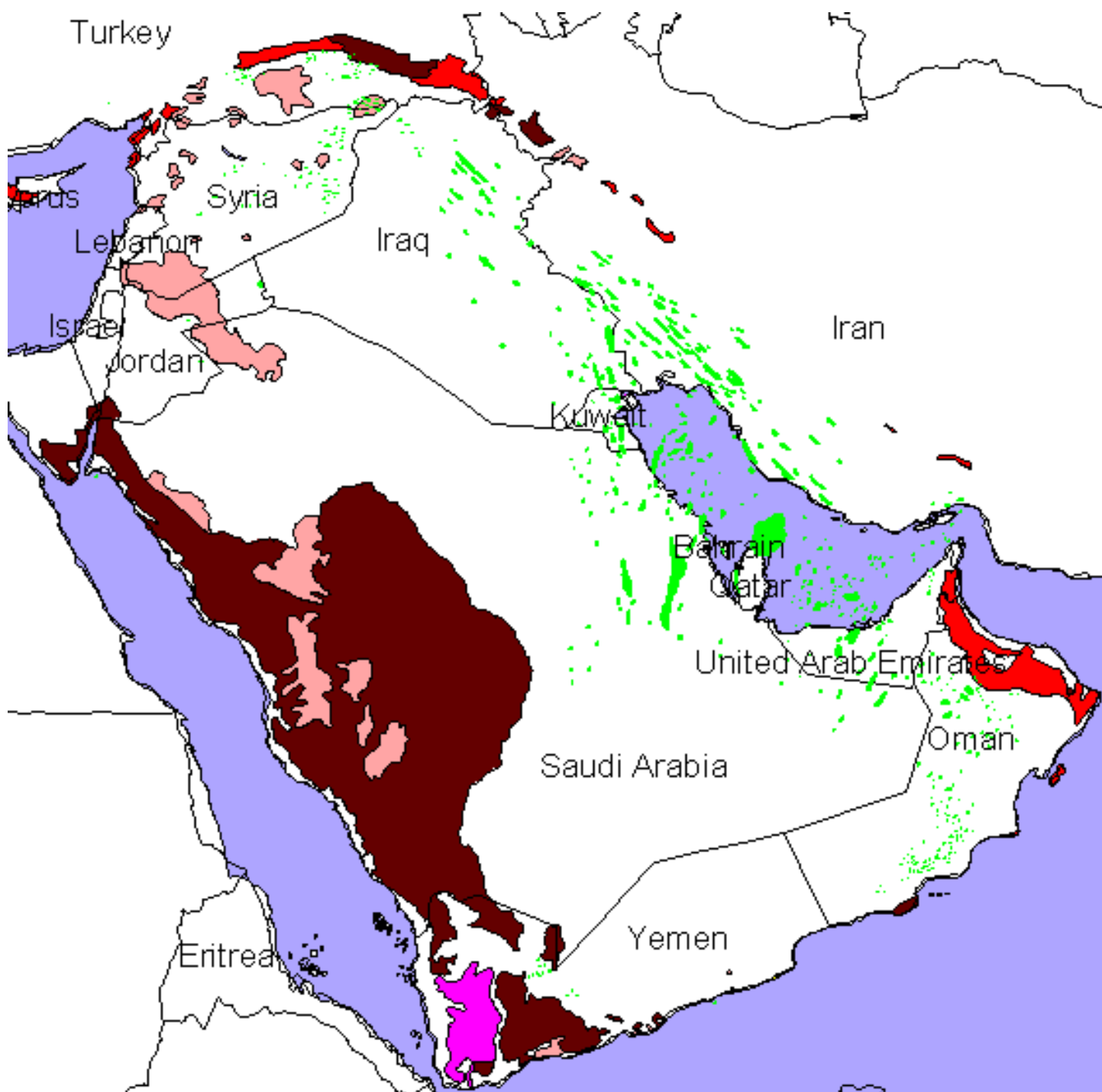


Figure 2 - inset. Vectorized map of oil and gas fields of the Arabian Plate, with outcrops of basement rocks and ophiolites (from Beydoun, 1991), as overlay to map of sedimentary provinces. Click on inset map for enlargement.

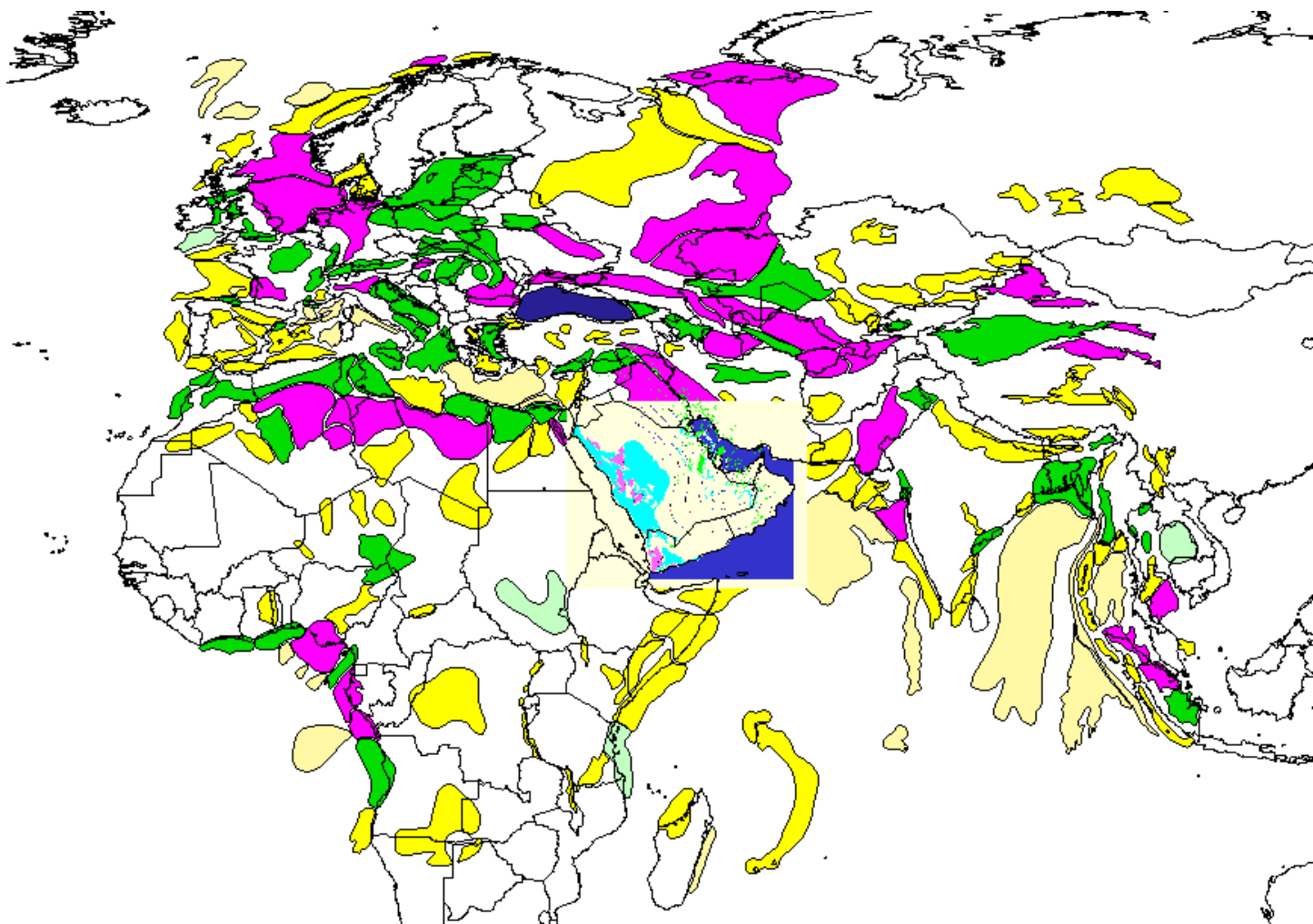


Figure 3. Georeferenced structure map (base of Mesozoic) of the Arabian Plate (Alexander, 1986), as overlay to map of sedimentary provinces. Click on inset map for enlargement.

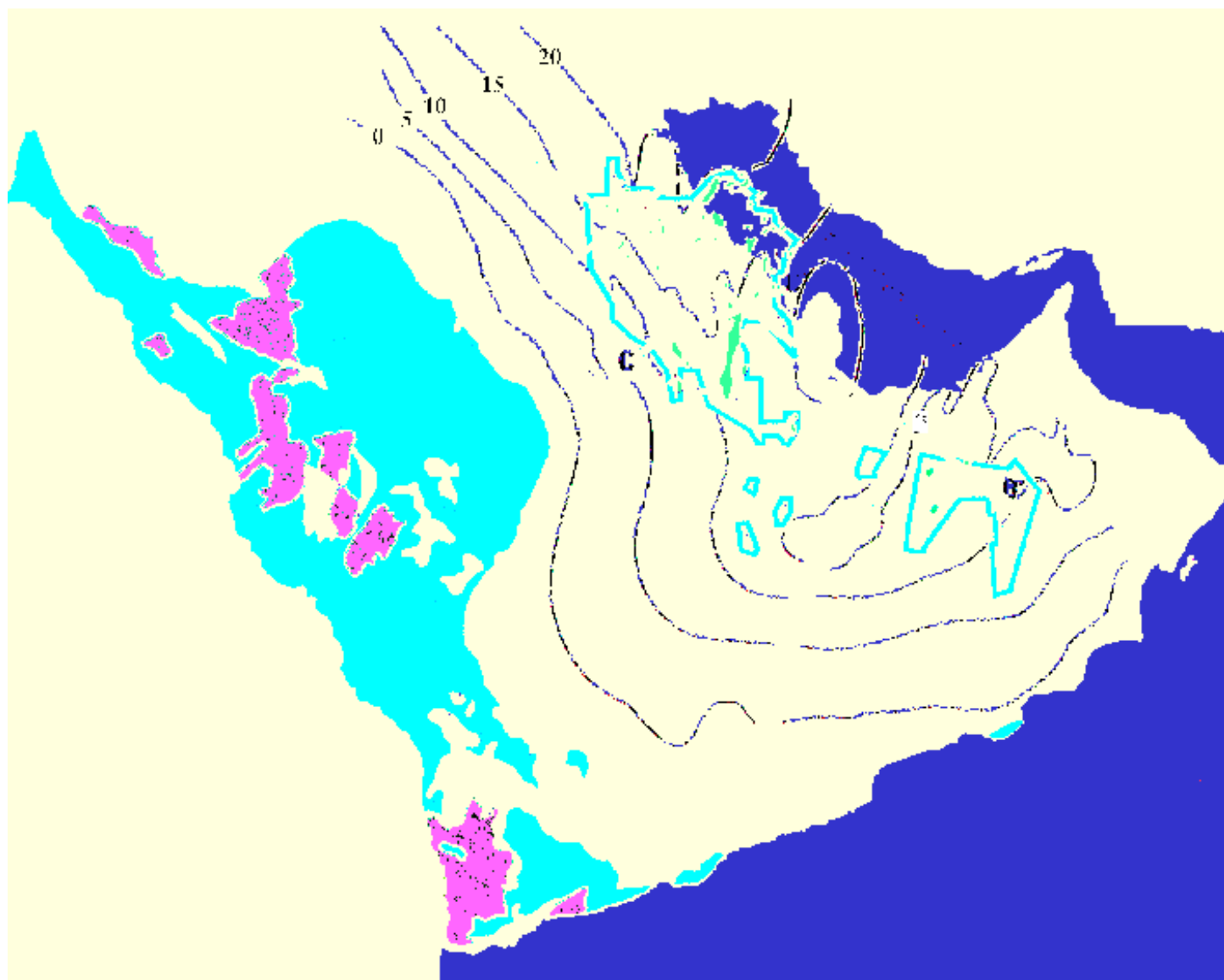


Figure 3 – inset.

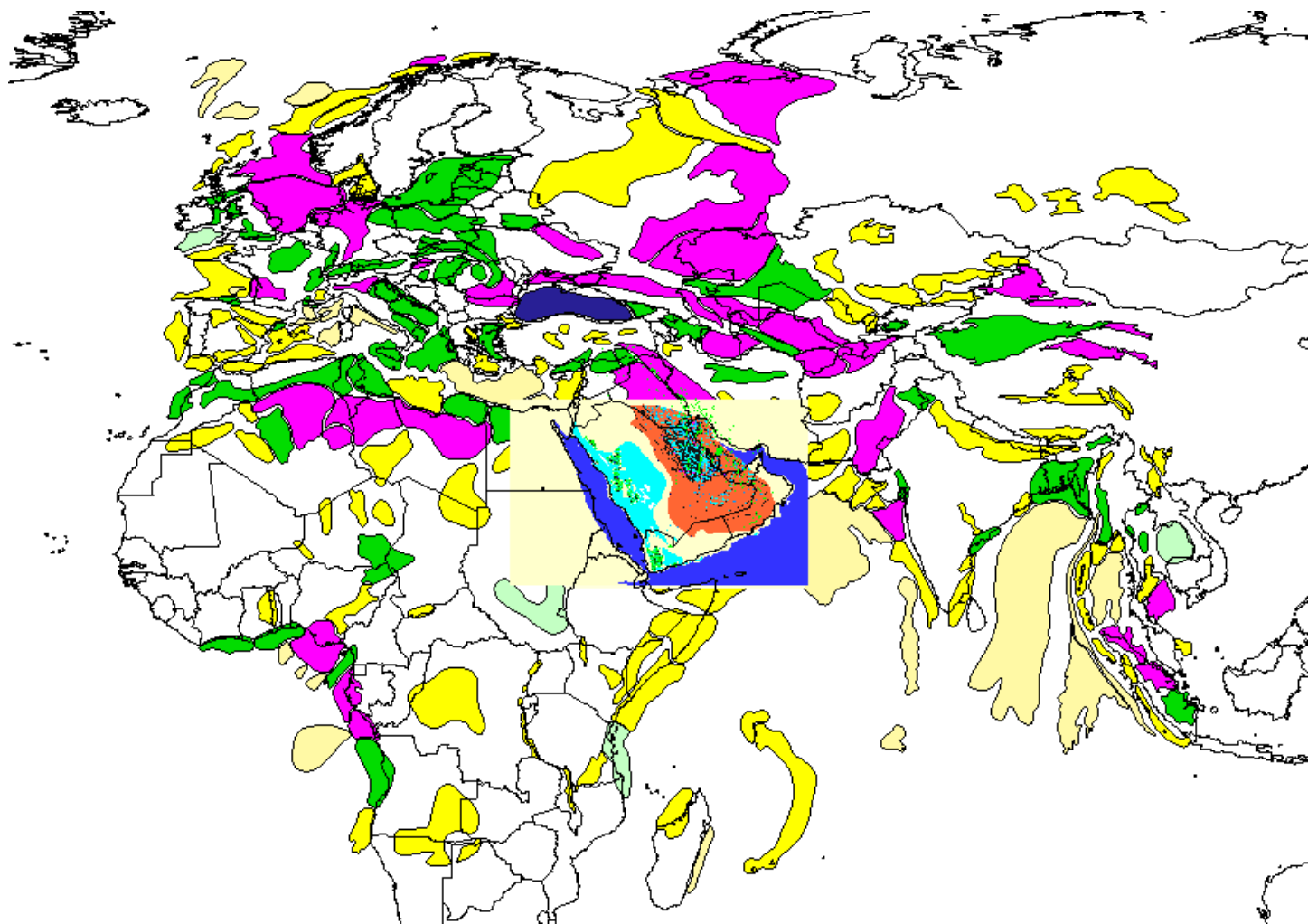


Figure 4. Georeferenced map of Upper Jurassic source rocks in Arabian Plate (Alexander, 1986), as overlay to map of sedimentary provinces. Click on inset map for enlargement.

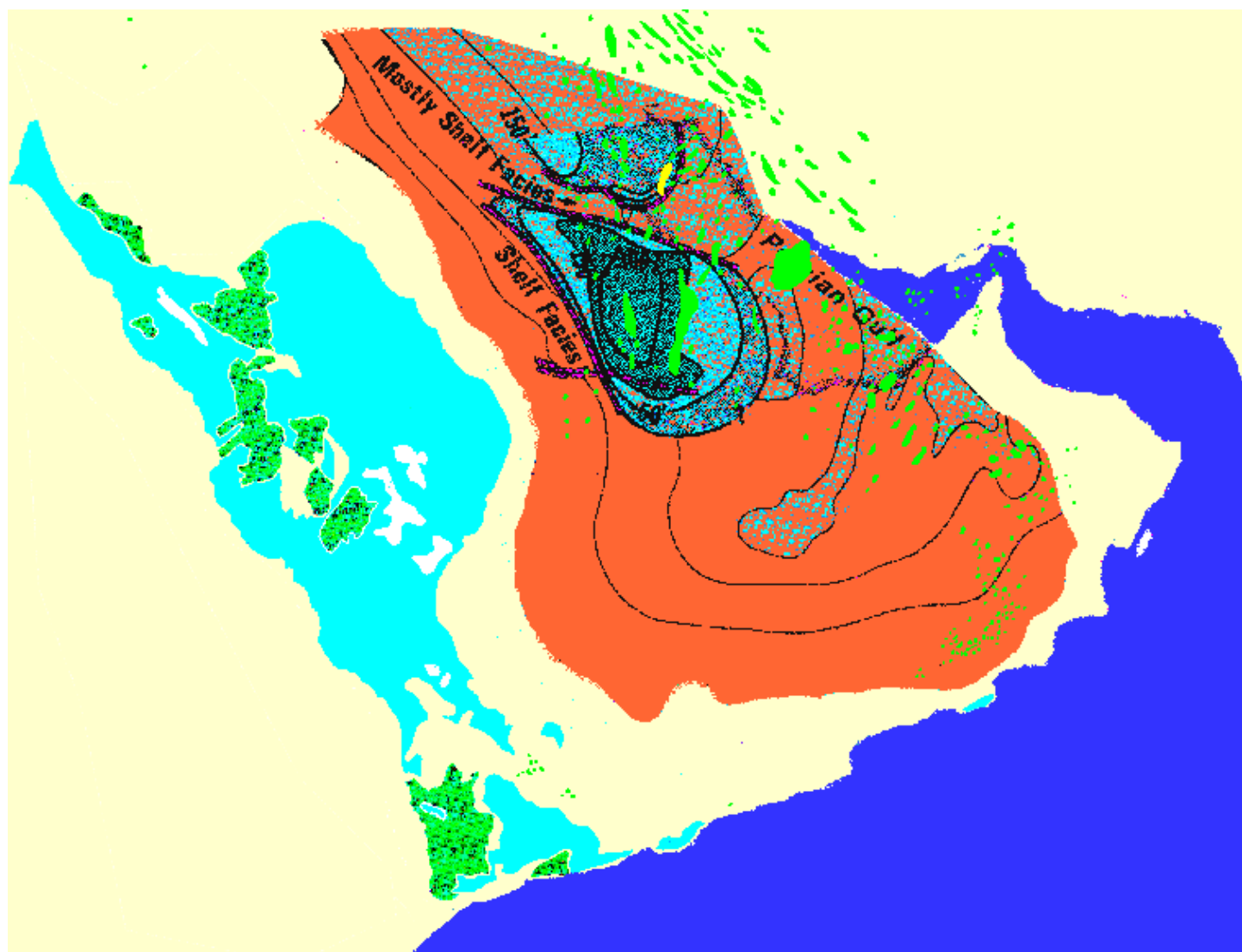


Figure 4 - inset.



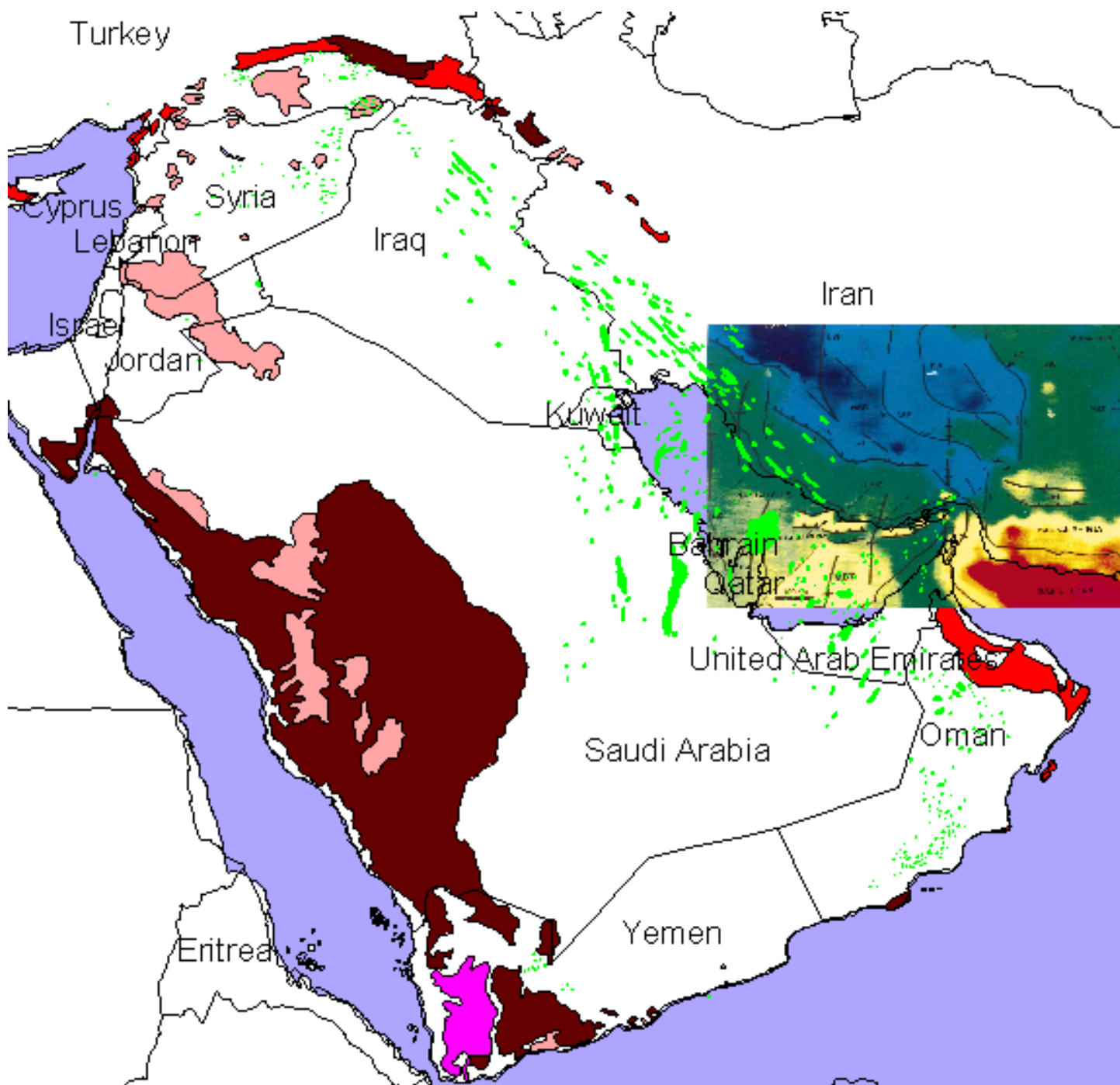


Figure 5. Georeferenced bouguer gravity anomaly map for southern Iran and contiguous areas (Bushara, 1995), as overlay to oil and gas map. Click on inset map for enlargement.



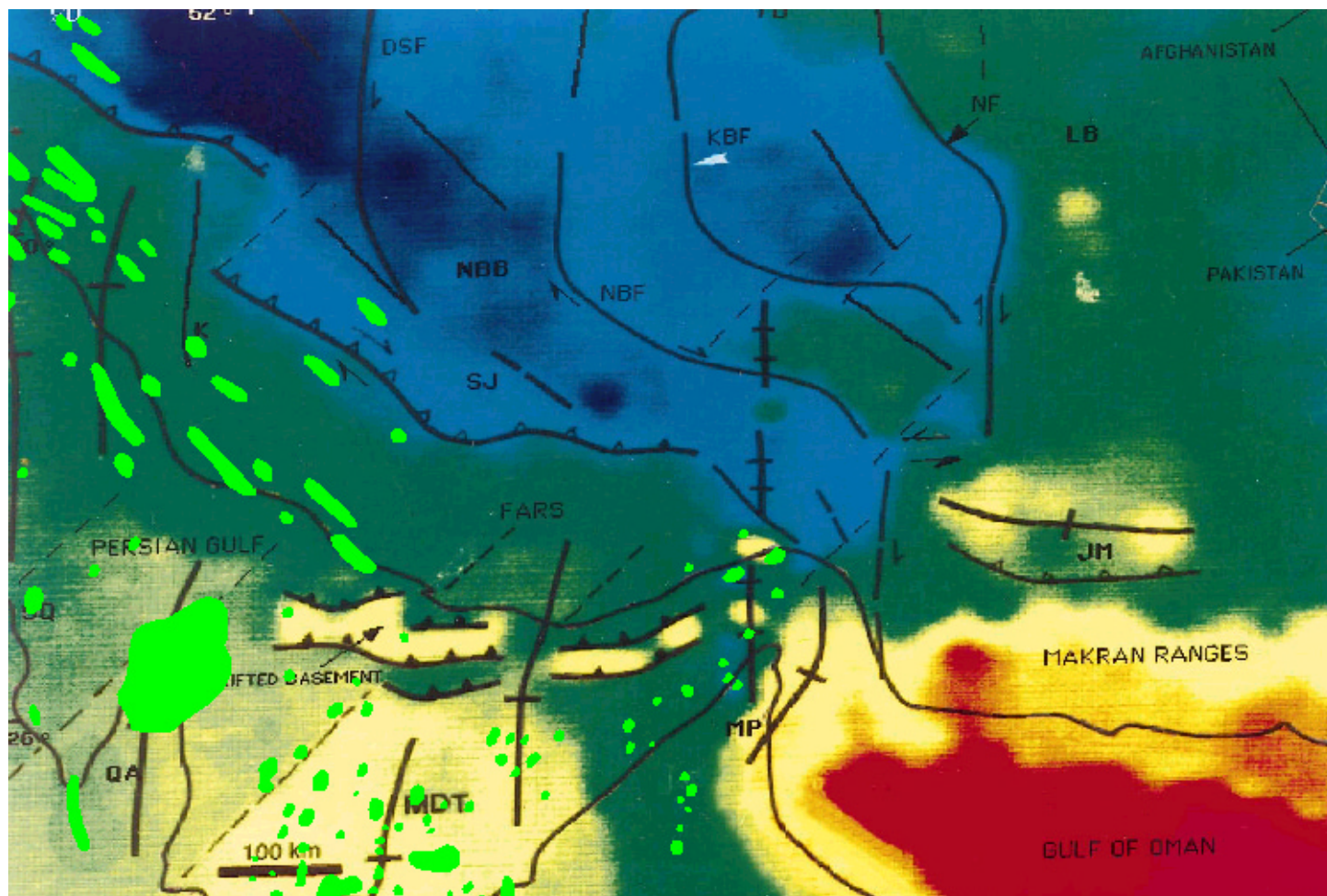


Figure 5 - inset.

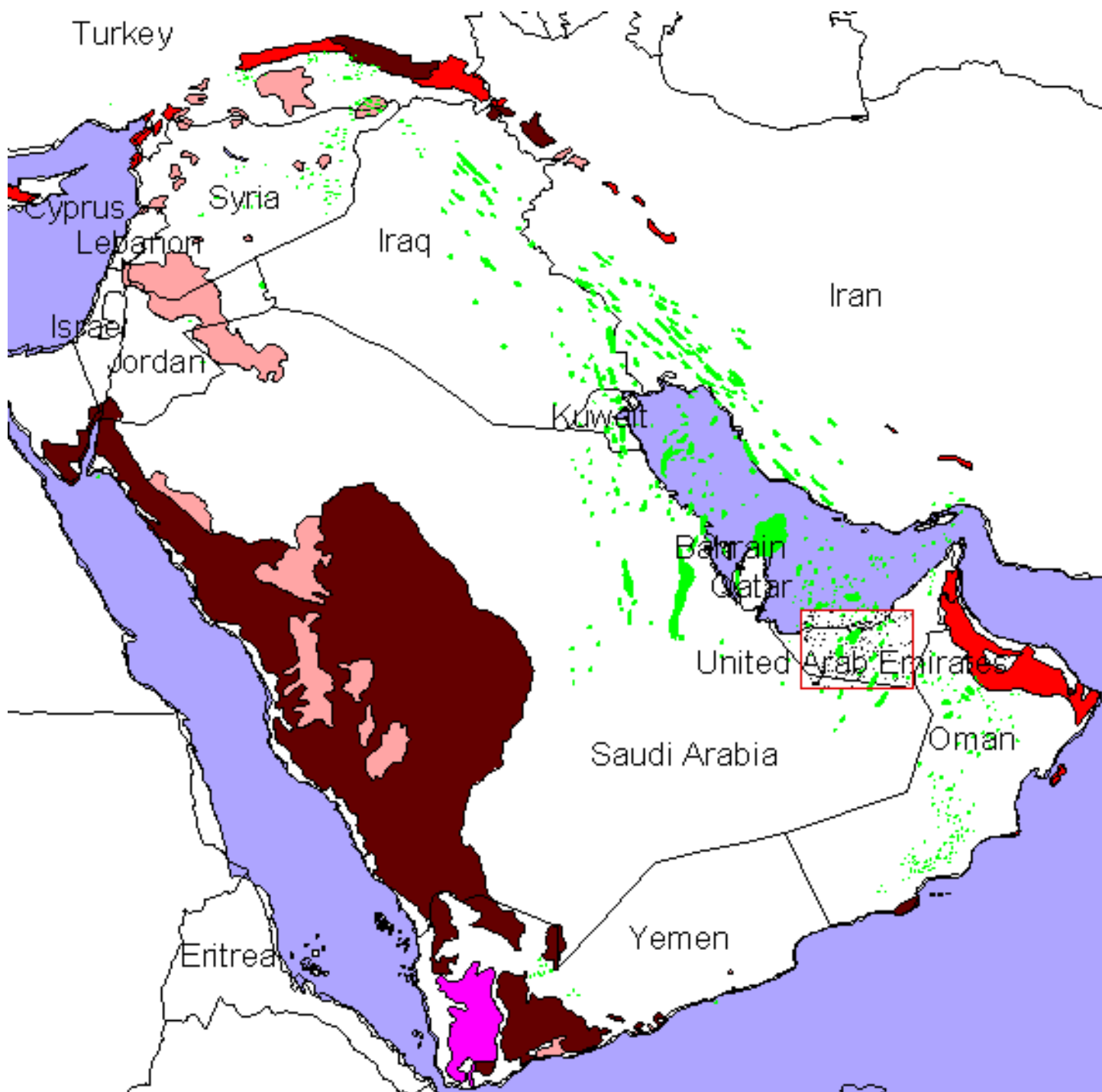


Figure 6. Georeferenced structure map, Shuaiba Formation, in part of U.A.E. (Alsharhan, 1993), as inset to oil and gas map. Click on inset map for enlargement.

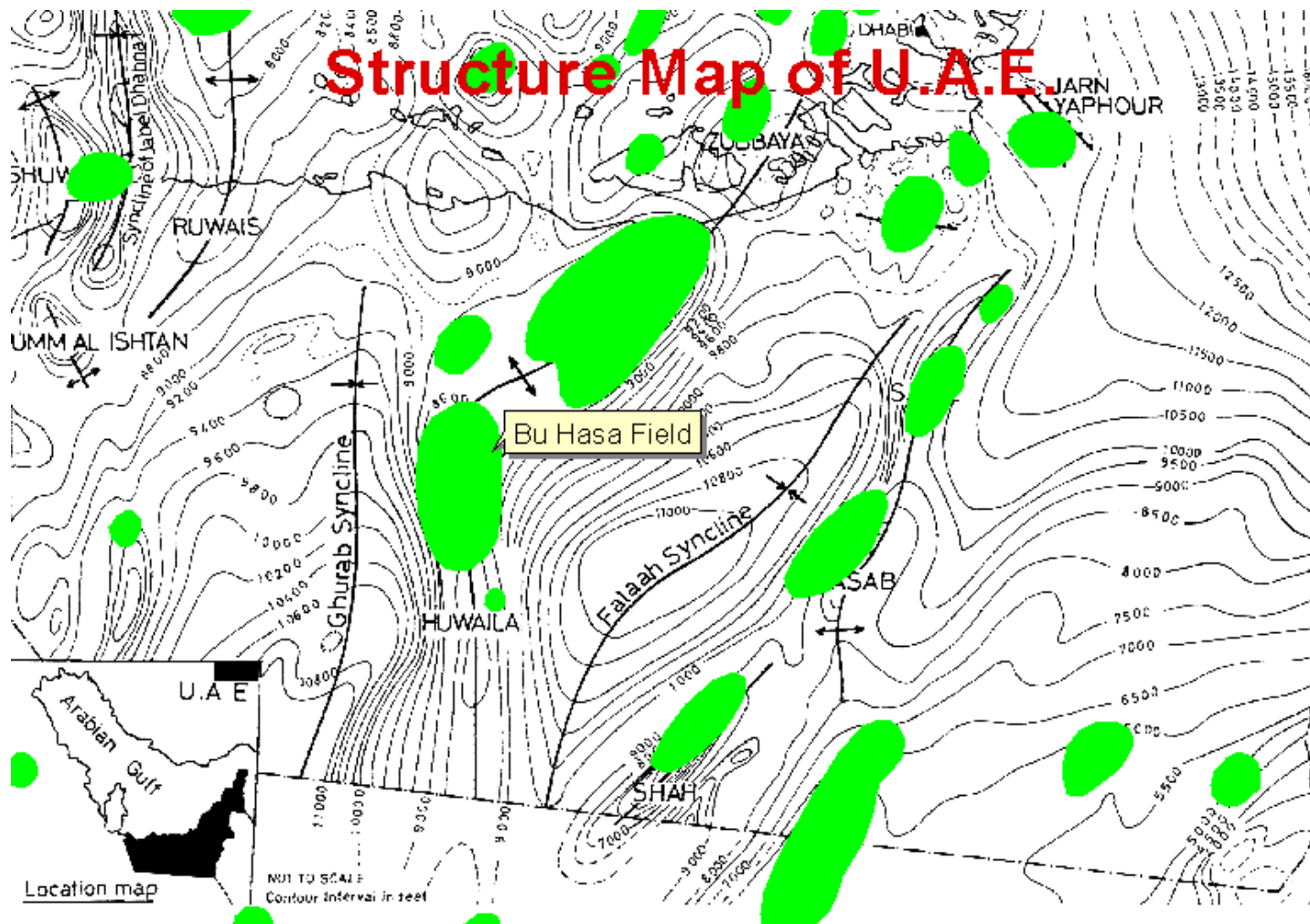


Figure 6 - inset.

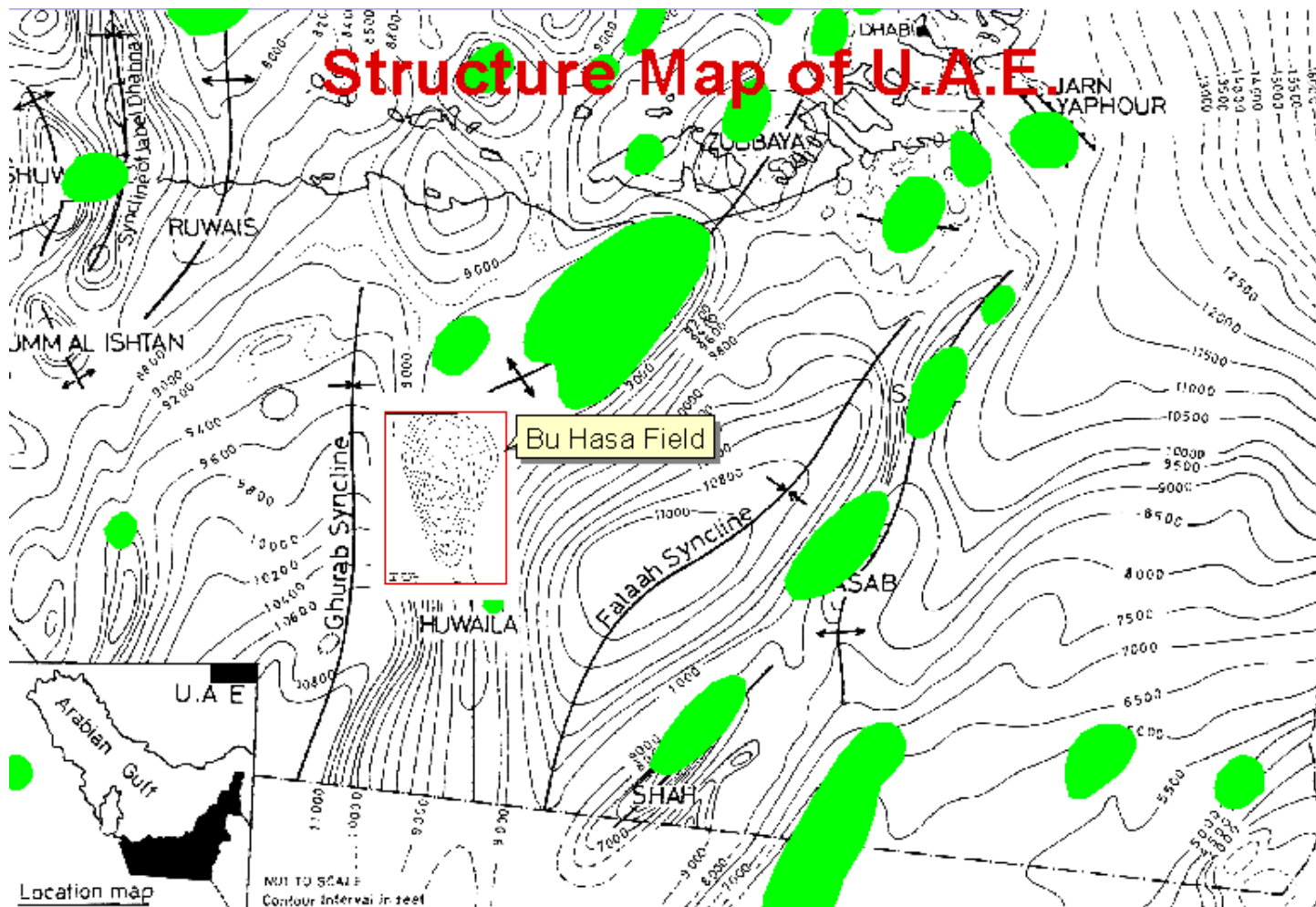


Figure 7. Georeferenced structure map of Bu Hasa oil field (Alsharhan, 1993), as inset to structure map of U.A.E. Click on inset map for enlargement.



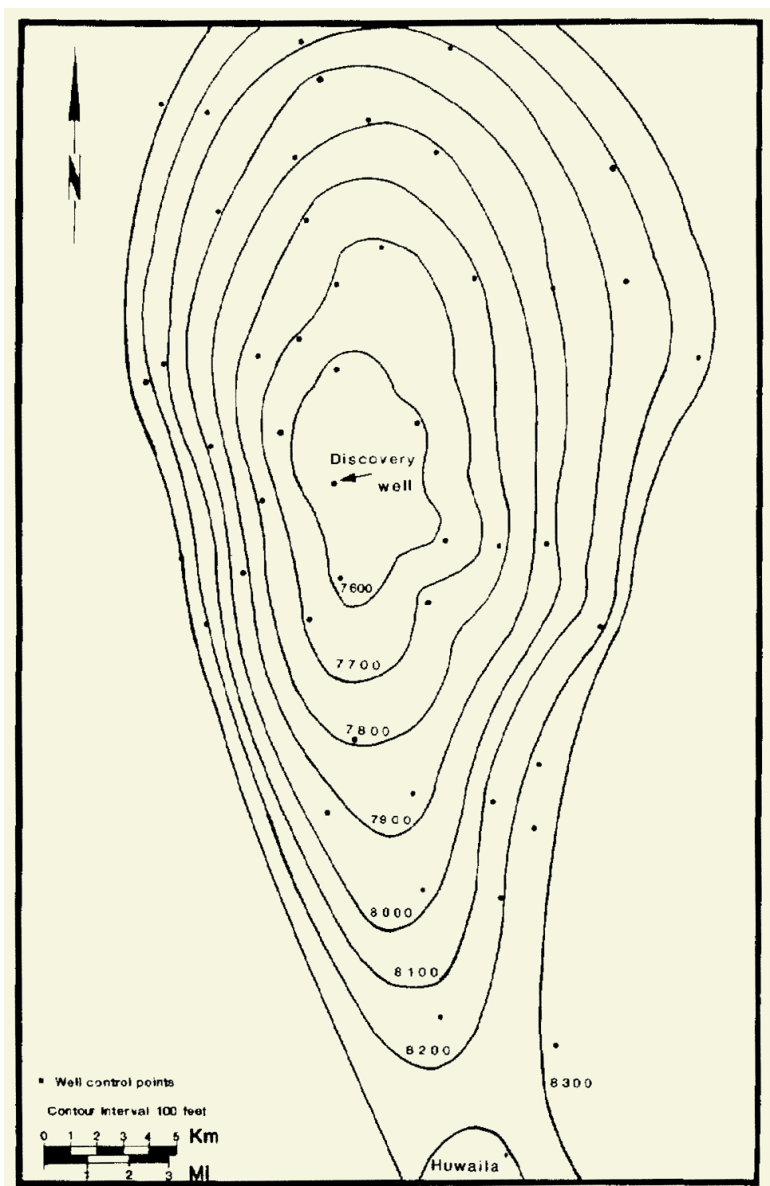


Figure 7 - inset.

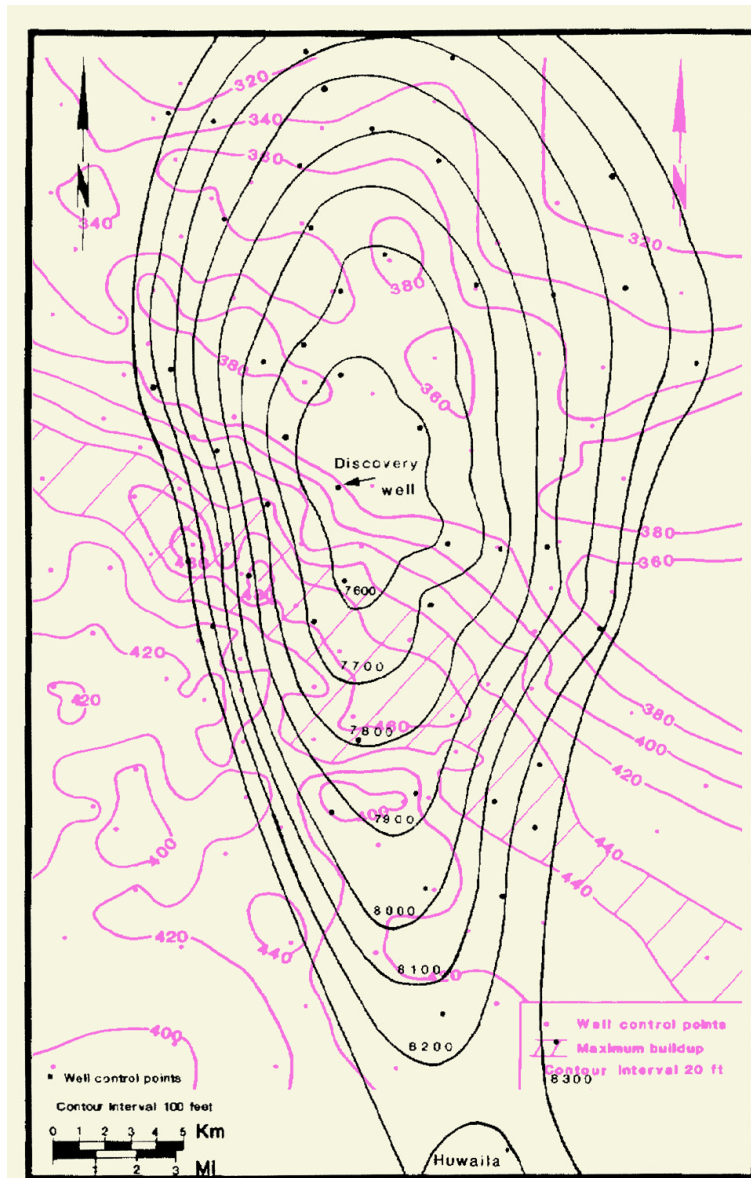


Figure 8. Georeferenced isopach map of Cretaceous Shuaiba Formation, Bu Hasa field (Alsharhan, 1993), as an overlay to structure map.

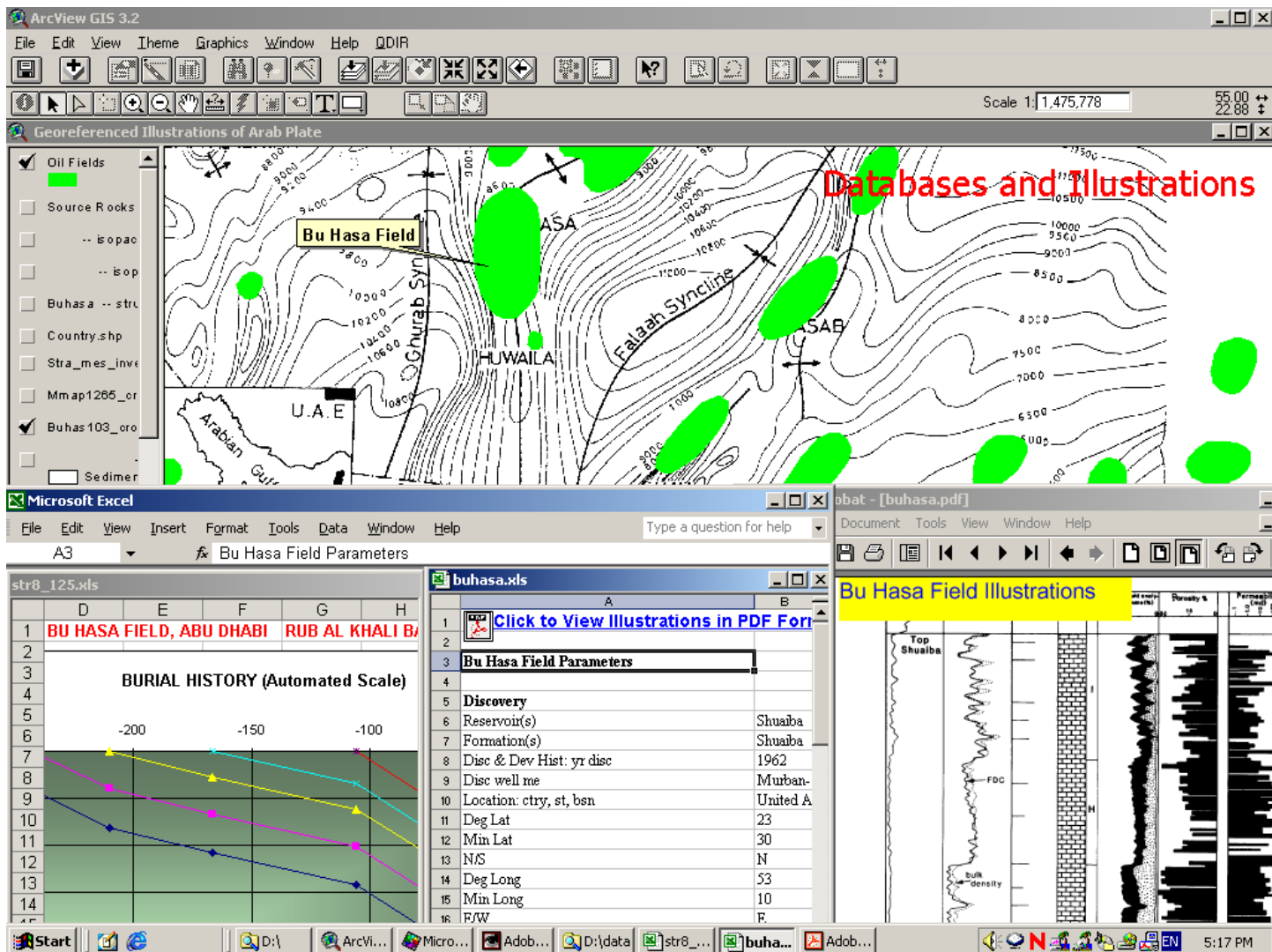


Figure 9. Databases and illustrations of Bu Hasa features, linked to structure map of U.A.E. (Alsharhan, 1993). Database for Burial History prepared by M.K. Horn. Click on burial history plot to view database in Excel; click on database of field parameters to view it in Excel; click on illustration for view in PDF.