

Memorabilia of the Uranium Boom of the 1950's*

Mark Wood¹

Search and Discovery Article #70125 (2012)**

Posted October 8, 2012

*Adapted from oral presentation given at AAPG Rocky Mountain Section meeting, Grand Junction, Colorado, September 9-12, 2012

**AAPG©2012 Serial rights given by author. For all other rights contact author directly.

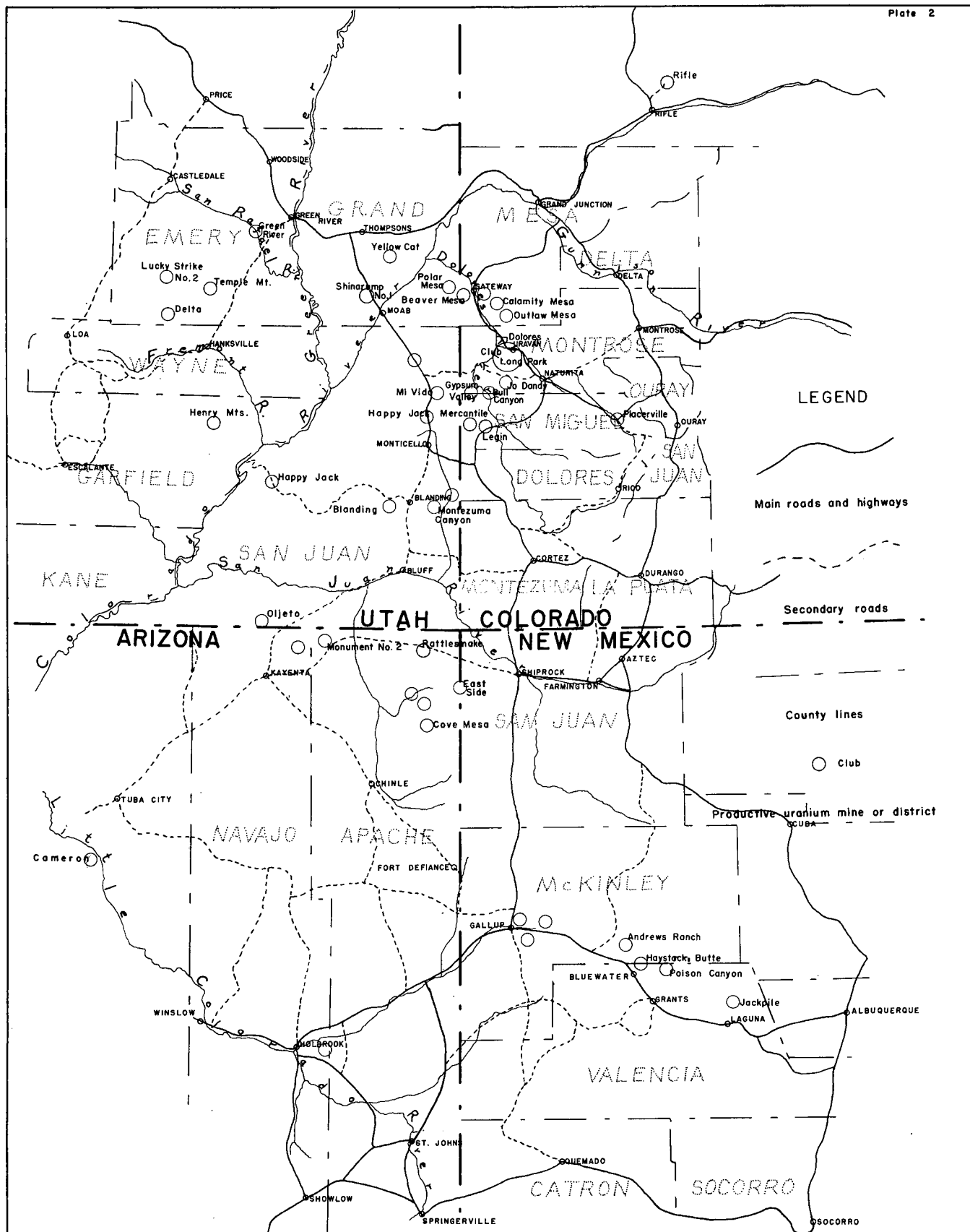
¹Corpro Group, Evergreen, CO (MWood@corpro-group.com)

Abstract

What was it like to be a geologist during the 1950's uranium boom? This presentation is an attempt to ruminate upon what it was like through the eyes (and slides) of the presenter's father, Hiram B. Wood, who was the Chief Plateau Geologist for the Atomic Energy Commission in Grand Junction during the 1950's. The following sequence of slides with short notes gives a glimpse of what it was like during the time of the 'Uranium Frenzy'.

Reference

Smith, C.T., 1955, Uranium Occurrences on the Colorado Plateau: Four Corners Geological Society Guidebook, p. 169-176.



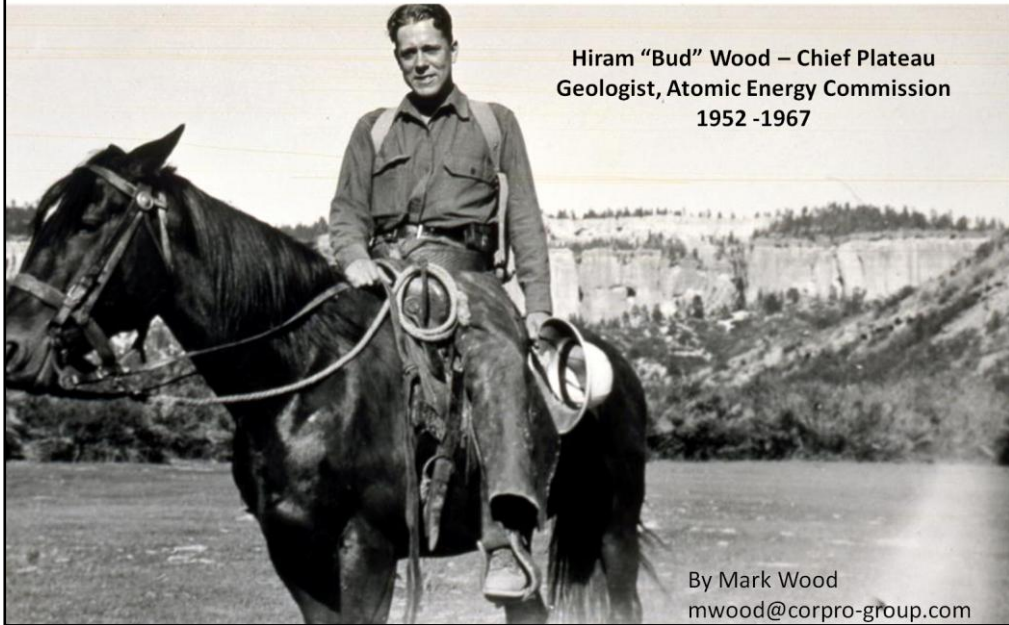
PRINCIPAL URANIUM OCCURRENCES OF THE COLORADO PLATEAU

Approximate scale: 1 inch = 27.5 miles

CLAY T. SMITH 1955

Memorabilia of the Uranium Boom of the 1950's

Hiram "Bud" Wood – Chief Plateau
Geologist, Atomic Energy Commission
1952 -1967



By Mark Wood
mwood@corpro-group.com

Presenter's notes: Hiram B. Wood (1911-2002), Bryce Canyon National Park, 1936 summer job mapping park; he also worked summer of 1937 mapping Mesa Verde National Park.



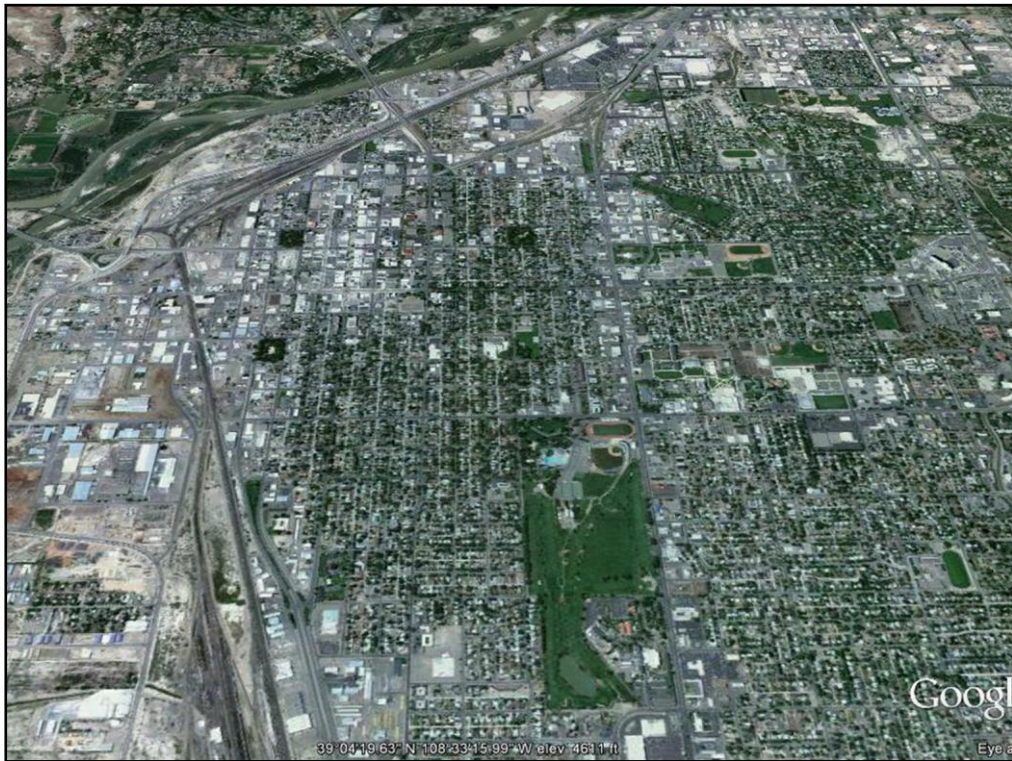
Presenter's notes: Colorado River halfway between Dewey and Moab UT; Wingate, Chinle, and Cutler formations, September, 1954.



Presenter's notes: Monument Valley, AZ; May 28, 1953.



Presenter's notes: Grand Junction, July 15, 1953.



Presenter's notes: Present day Grand Junction.



Presenter's notes: AEC Plant and Office, 3 miles SW of Grand Junction, May 19, 1953.



Presenter's notes: AEC Gang at Green River, 1954—alteration lecture by Y.W. Isachsen.



Presenter's notes: Delta Mine, May 12, 1955.



Presenter's notes: MiVida Mine down dip portal, June 20, 1955.



Presenter's notes: Blue Lake, west side of Grand Mesa, below rim, elevation 8,500 ft, August, 1962.



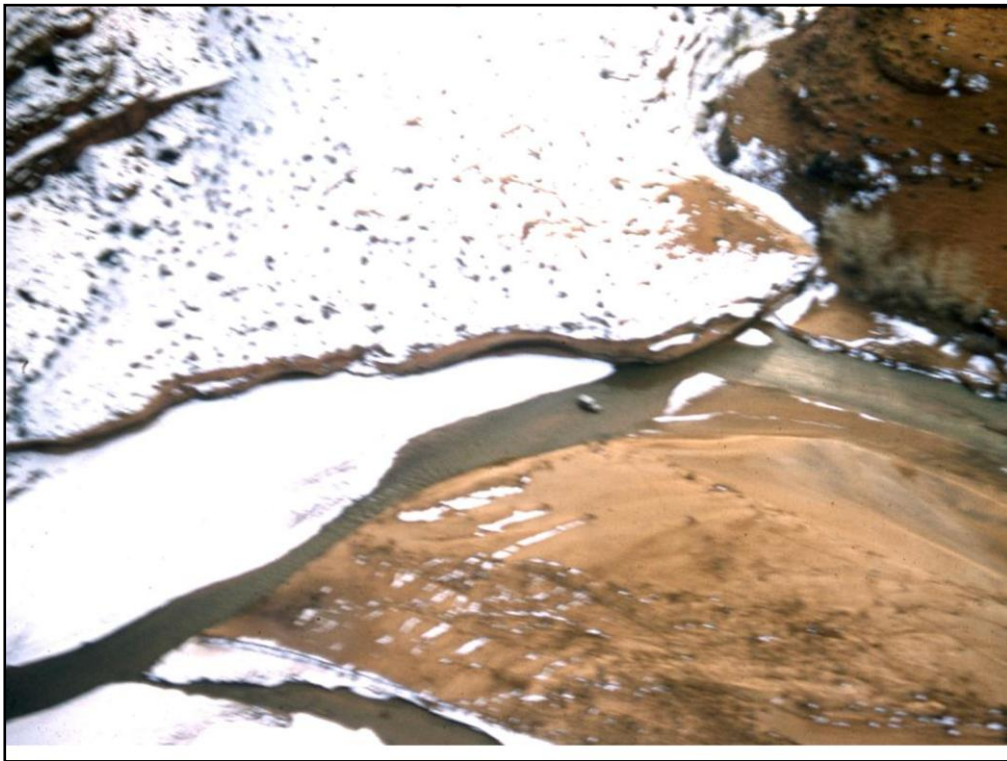
Presenter's notes: Covered wagon, modern uranium version, September 17, 1954.



Presenter's notes: San Rafael Swell planning conference and inspection party, February, 1956.



Presenter's notes: Stuck in sand, northeast of San Rafael Swell, June, 1956.



Presenter's notes: Jeep stuck in Escalante River, 1 mile southwest of Silver Creek Falls, February, 1958.



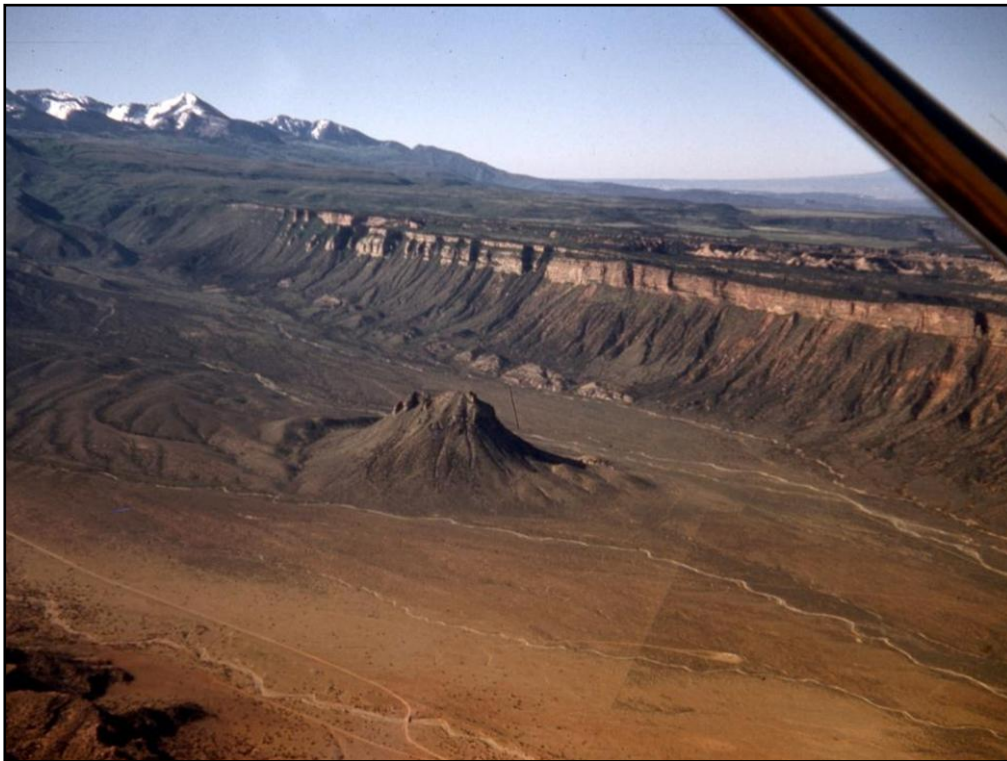
Presenter's notes: Sept 1954, Chaffin Ferry across Colo River at Hite UT, \$5/passenger car



Presenter's notes: Hite Ferry, between Hanksville and Blanding, UT, state hwy 95, April, 1962.



Presenter's notes: Airborne survey Circle Cliffs, August, 1955.



Presenter's notes: Igneous plug cutting Triassic beds, northwest side of LaSalle Mountains, Castle Valley, south side of Colorado River, May, 1954.



Presenter's notes: San Rafael Swell, east flank looking toward Henry Mountains, March, 1955.



Presenter's notes: San Rafael Swell, view towards Capital Reef, view south of east flank, curvature and plunge, February, 1955.



Presenter's notes: Vail Pass looking west, January, 1956.



Presenter's notes: Vail Pass, February, 1956. Arapaho Basin ski area.



Presenter's notes: Roan Plateau west of Rifle, Wasatch and Green River formations, January 1954.



Presenter's notes: Circle Cliffs Burr Trail Junction with Hall Creek Road, Fall, 1956.



Presenter's notes: Paddle Cactus bloom, 6 miles southeast of Cameron, AZ, May, 1953.



Presenter's notes: Cottonwood in Coleman Wash, east side of Circle Cliffs, UT, Carmel Formation, October, 1954.



Presenter's notes: Lisbon Valley looking towards the LaSal Mountains, July, 1958.



Presenter's notes: AEC gang repairing and watering hot jeep, July, 1953.



Presenter's notes: Mt. Pennel Henry Mountains, UT, August, 1954.



Presenter's notes: Petroglyphs, Temple Wash, San Rafael Swell, UT. July, 1953.



Presenter's notes: Petroglyph vandalism, Buckhorn Wash, San Rafael Swell, Wingate Sandstone; note Jim Bridger, 1846 on left; July, 1953.



Presenter's notes: 2-9-1954, Prospecting tool (\$35,000 helicopter, \$400/hr), east side of Frey Canyon on Triassic bench, February, 1954.



Presenter's notes: Serpent Bend, Henry Mountains, south of Notom; view northeast shows southeast plunge of Teasdale Anticline, October 1955.



Presenter's notes: Todilto Limestone, uranium mine near Grants, NM; view along axis of fold, March 1956.



Presenter's notes: Mahogany Mine portal, USBM project producing 15-30 bbls of oil per ton, January, 1954.



Presenter's notes: Sunset at Monument Valley, November, 1954.