

Click to view movies.

[Evolution, turbidity current.](#) [3-D mini-basin filling.](#)

[Profile, mini-basin filling.](#) [Flow over cylinder.](#)

## **Computational Investigations of Turbidity Currents in Complex Topographies\***

**M. Nasr<sup>1</sup>, S. Saegeler<sup>1</sup>, M. Zoellner<sup>1</sup>, E. Meiburg<sup>1</sup>, and B. Kneller<sup>2</sup>**

Search and Discovery Article #50271 (2010)

Posted July 19, 2010

\*Adapted from oral presentation at AAPG Annual Convention and Exhibition, New Orleans, Louisiana, April 11-15, 2010

<sup>1</sup>Mechanical Engineering, UC Santa Barbara, Santa Barbara, CA ([meiburg@engineering.ucsb.edu](mailto:meiburg@engineering.ucsb.edu))

<sup>2</sup>Geology and Petroleum Geology, University of Aberdeen, Aberdeen, United Kingdom

### **Abstract**

We consider turbidity currents interacting with complex seafloor topographies, such as mini-basins, ridges, and curved or meandering channels. Both two- and three-dimensional Navier-Stokes simulations are employed in order to investigate the dynamics of the currents, along with their erosional and depositional behavior for a range of flow parameters and topographical shapes.

For mini-basin topographies, we observe that coherent vortical structures generated by topographical effects can result in the formation of strong local variations in the sediment deposit. Reflections of the current, as well as the formation of internal bores, are seen to be influential as well. Results from a parametrical study are discussed, based on two- and three-dimensional simulations of depositing currents, in order to quantify the effects of the geometrical parameters and grain-size on the sediment deposit fields.

For continuous inflow turbidity currents propagating through bends and meandering channels, the amount of over-spill is investigated as a function of the governing geometrical and flow parameters. Particular emphasis is placed on the influence of the secondary flow induced by the channel curvature.

## References

Ermanyuk, E.V. and N.V. Gavrilov, 2005a, Interaction of an internal gravity current with a submerged circular cylinder: J. Appl. Mech. Tech. Phys., v. 46/2, p. 216–223.

Ermanyuk, E.V. and N.V. Gavrilov, 2005b, Interaction of an internal gravity current with an obstacle on the channel bottom: J. Appl. Mech. Tech. Phys.v. 46/4, p. 489–495.

Härtel, C., E. Meiburg, and F. Necker, 1999, Analysis and direct numerical simulation of the flow at a gravity-current head. Part I: Flow topology and front speed for lip and no-slip boundaries: Journal of Fluid Mechanics, v. 418, p. 189-212.

Necker, F., C. Haertel, L. Kleiser, and E. Meiburg, 2002, Simulation of sedimentation and mixing in deeply-submerged gravity currents, *in* A. Gyr and W. Kinzelbach, (eds.), Sedimentation and sediment transport; proceedings, p. 195-200.

de Rooij, F. and S.B. Dalziel, 1998, Time and space-resolved measurements of the deposition under turbidity currents, *in* W.D. McCaffrey, B. Kneller, and J. Peakall, (eds.), Particulate Gravity Currents: International Association of Sedimentologists, Special Publication, v. 31, p. 207-215.

# *Computational Investigation of Turbidity Currents in Complex Topographies*

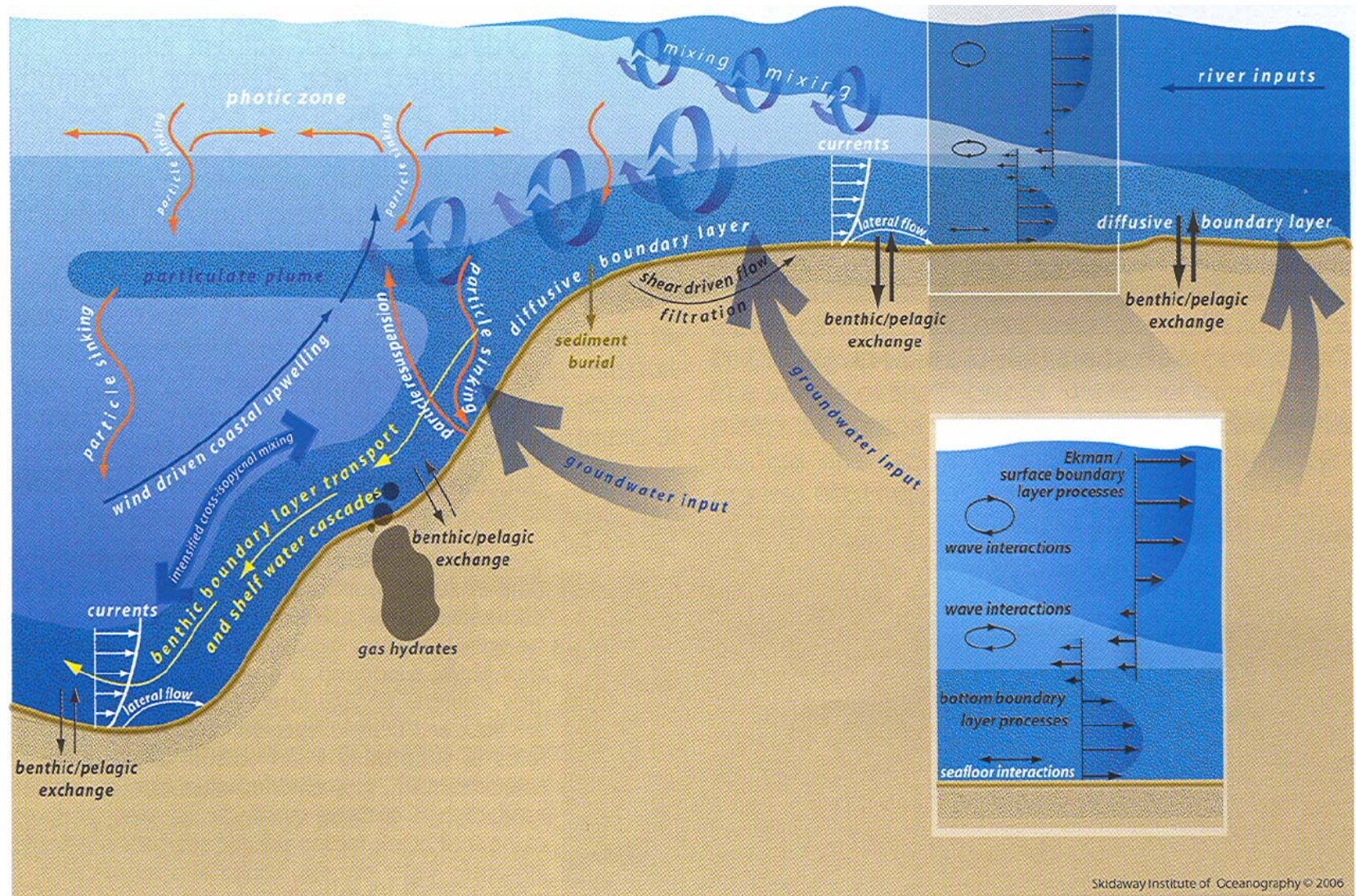
*M. Nasr, S. Saegeler, M. Zoellner, E. Meiburg (UCSB)  
B. Kneller (U. Of Aberdeen)*

- *Motivation*
- *Governing equations / computational approach*
- *Results*
  - *mini-basins*
  - *sinusoidal channels*
- *Summary and outlook*





# Coastal margin processes





# *Turbidity current*

- *Underwater sediment flow down the continental slope*
- *Can transport many km<sup>3</sup> of sediment*
- *Can flow O(1,000)km or more*
- *Often triggered by storms or earthquakes*
- *Repeated turbidity currents in the same region can result in the formation of hydrocarbon reservoirs*
- *Properties of turbidite:*
  - *particle layer thickness*
  - *particle size distribution*
  - *pore size distribution*



*Turbidity current.*  
*(University of Florida)*

## *Framework: Dilute flows*

*Volume fraction of particles of  $O(10^{-2} - 10^{-3})$ :*

- *particle radius  $\ll$  particle separation*
- *particle radius  $\ll$  characteristic length scale of flow*
- *coupling of fluid and particle motion primarily through momentum exchange, not through volumetric effects*
- *effects of particles on fluid continuity equation negligible*

## *Moderately dilute flows: Two-way coupling*

*Mass fraction of heavy particles of  $O(10\%)$ , small particle inertia (e.g., sediment transport):*

- *particle loading modifies effective fluid density*
- *particles do not interact directly with each other*

*Current dynamics can be described by:*

- *incompressible continuity equation*
- *variable density Navier-Stokes equation (Boussinesq)*
- *conservation equation for the particle concentration field*

*→ don't resolve small-scale flow field around each particle,  
but only the large fluid velocity scales*

## *Moderately dilute flows: Two-way coupling (cont'd)*

$$\nabla \cdot \vec{u}_f = 0$$

$$\frac{\partial \vec{u}_f}{\partial t} + (\vec{u}_f \cdot \nabla) \vec{u}_f = -\nabla p + \frac{1}{Re} \nabla^2 \vec{u}_f + c \vec{e}_g$$

*effective  
density*

$$\frac{\partial c}{\partial t} + [(\vec{u}_f + \vec{U}_s) \cdot \nabla] c = \frac{1}{Sc Re} \nabla^2 c$$

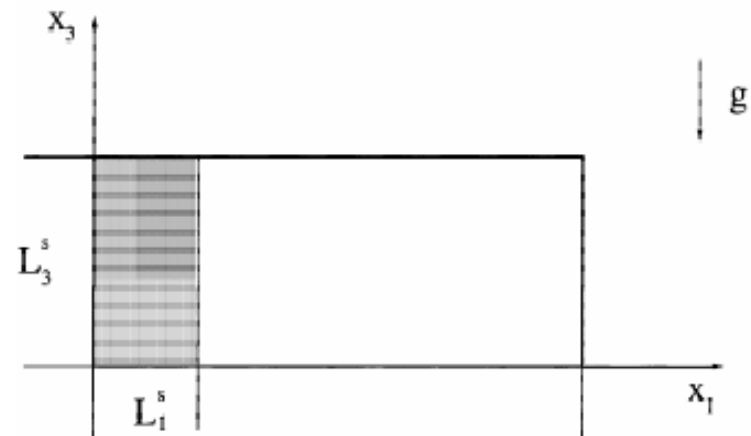
*settling  
velocity*

$$Re = \frac{u_b L}{\nu} \quad , \quad Sc = \frac{\nu}{D} \quad , \quad U_s = \frac{u_s}{u_b}$$



# *Model problem (with C. Härtel, L. Kleiser, F. Necker)*

*Lock exchange configuration*



*Dense front propagates  
along bottom wall*

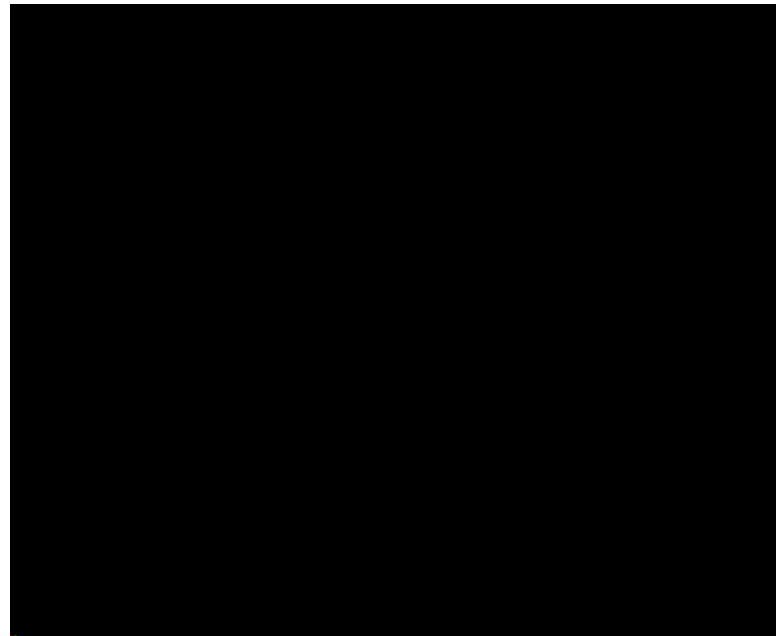


*Light front propagates  
along top wall*



## *Results: 3D turbidity current – Temporal evolution*

*DNS simulation (Fourier, spectral element,  $7 \times 10^7$  grid points)*

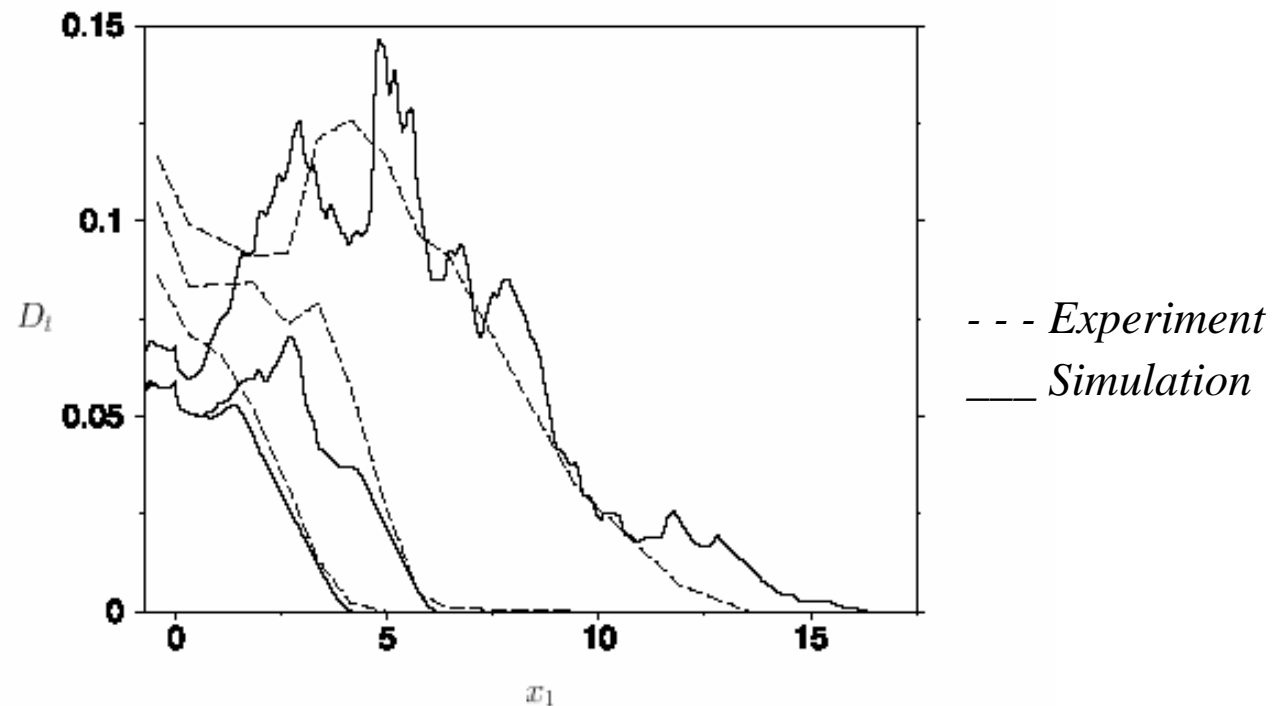


*Necker, Härtel, Kleiser and  
Meiburg (2002a,b)*

- turbidity current develops lobe-and-cleft instability of the front*
- current is fully turbulent*
- erosion, resuspension not accounted for*

## *Results: Deposit profiles*

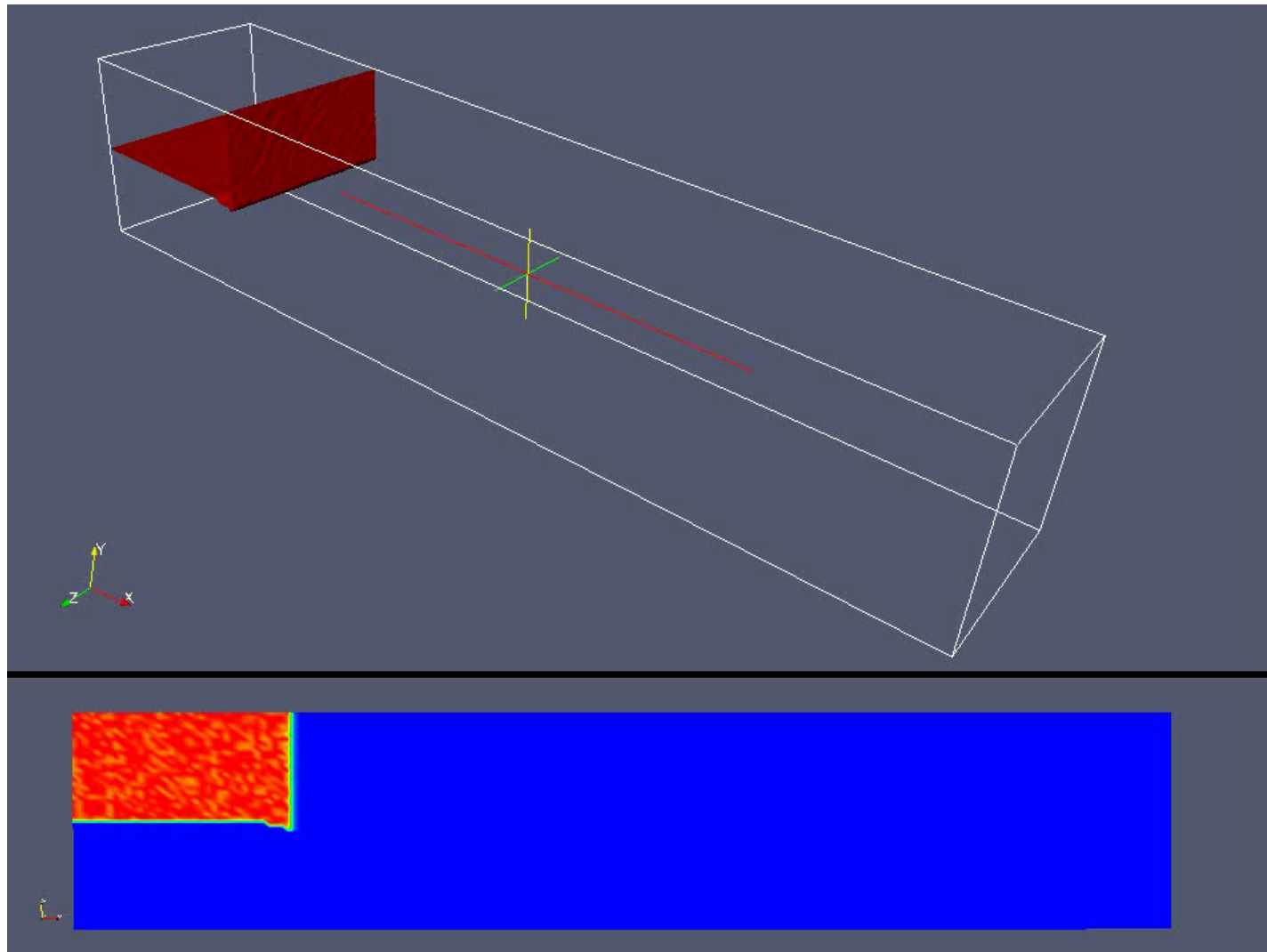
*Comparison of transient deposit profiles with experimental data of de Rooij and Dalziel (1998)*



- *simulation reproduces experimentally observed sediment accumulation*

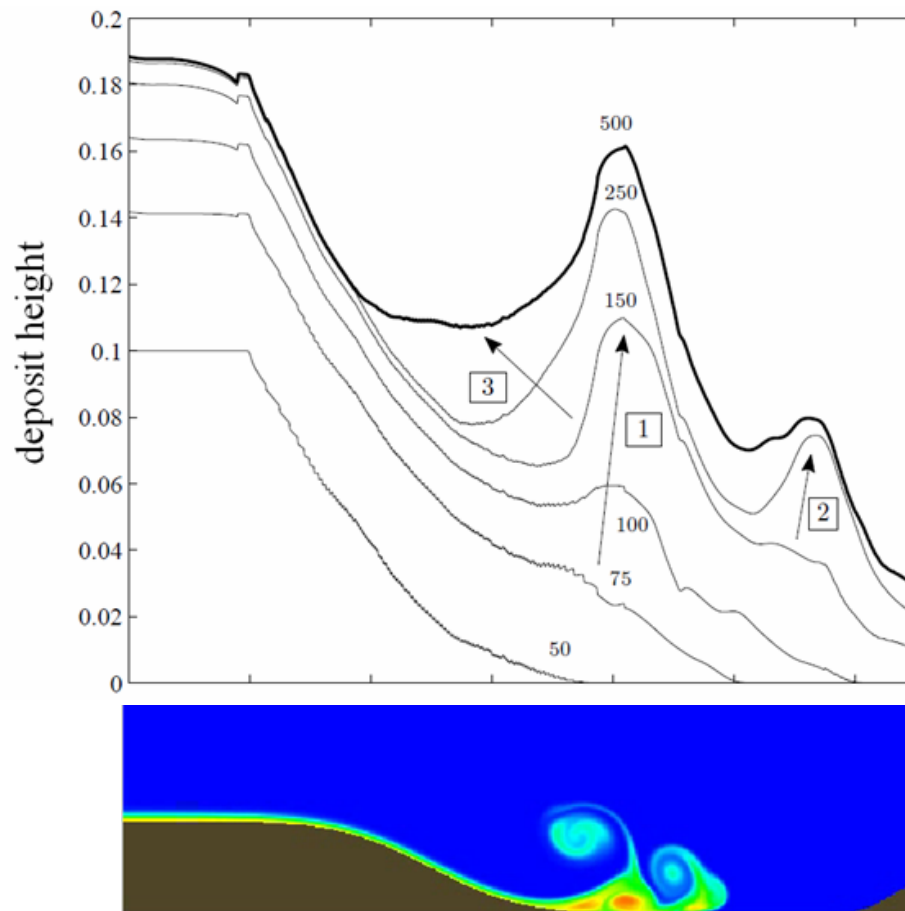
## *Filling of a minibasin*

*Interaction of gravity currents with submarine topography:*



# *Filling of a minibasin*

## *Deposit profiles*

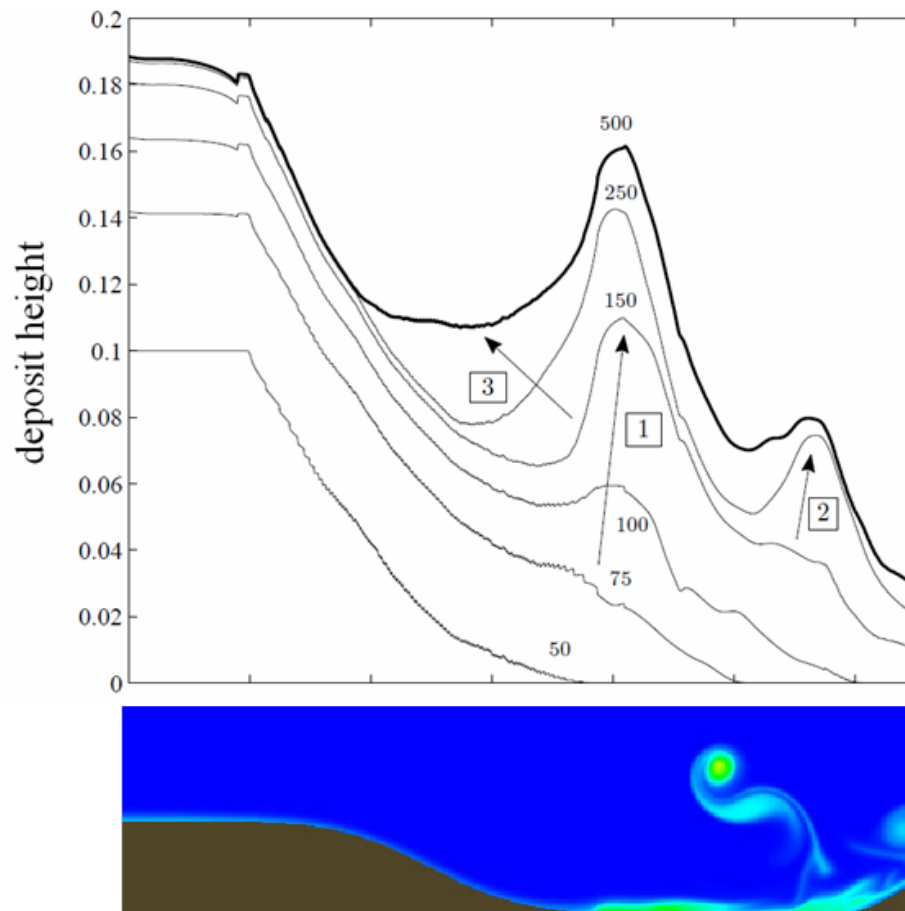


1. Accumulation by dumping after the front travels down the slope.
2. Current is reflected at the hump.
3. Secondary current travels upstream and deposits on the slope.



# *Filling of a minibasin*

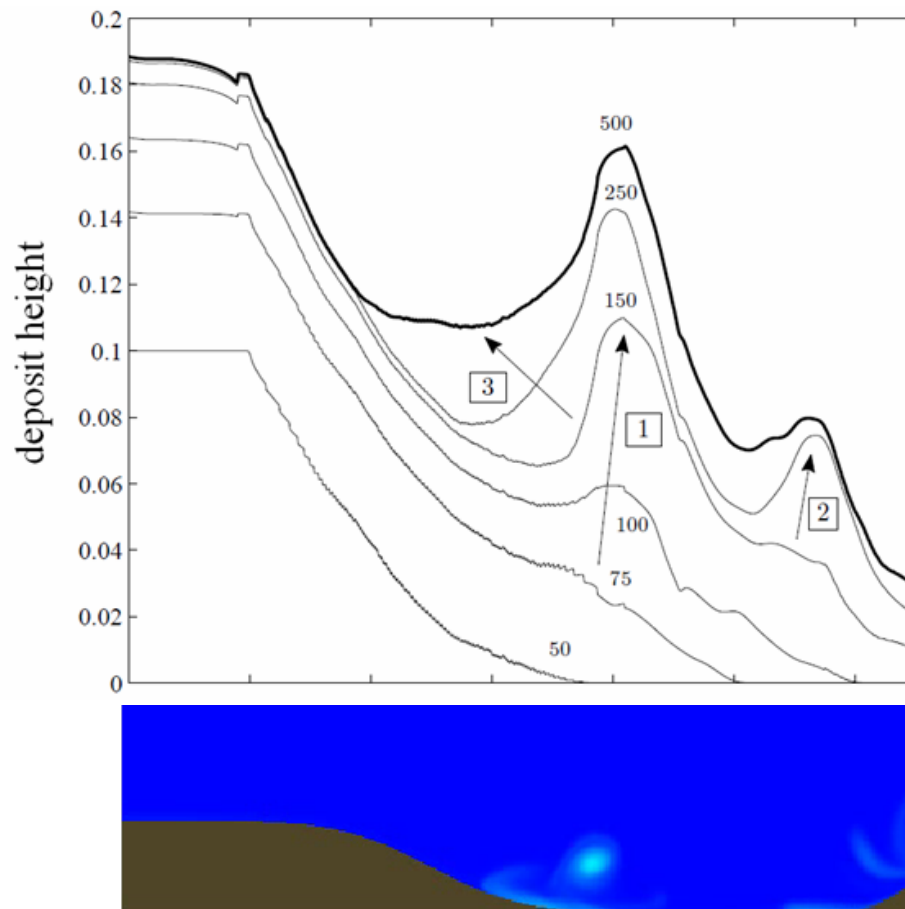
## *Deposit profiles*



1. Accumulation by dumping after the front travels down the slope.
2. **Current is reflected at the hump.**
3. Secondary current travels upstream and deposits on the slope.

# *Filling of a minibasin*

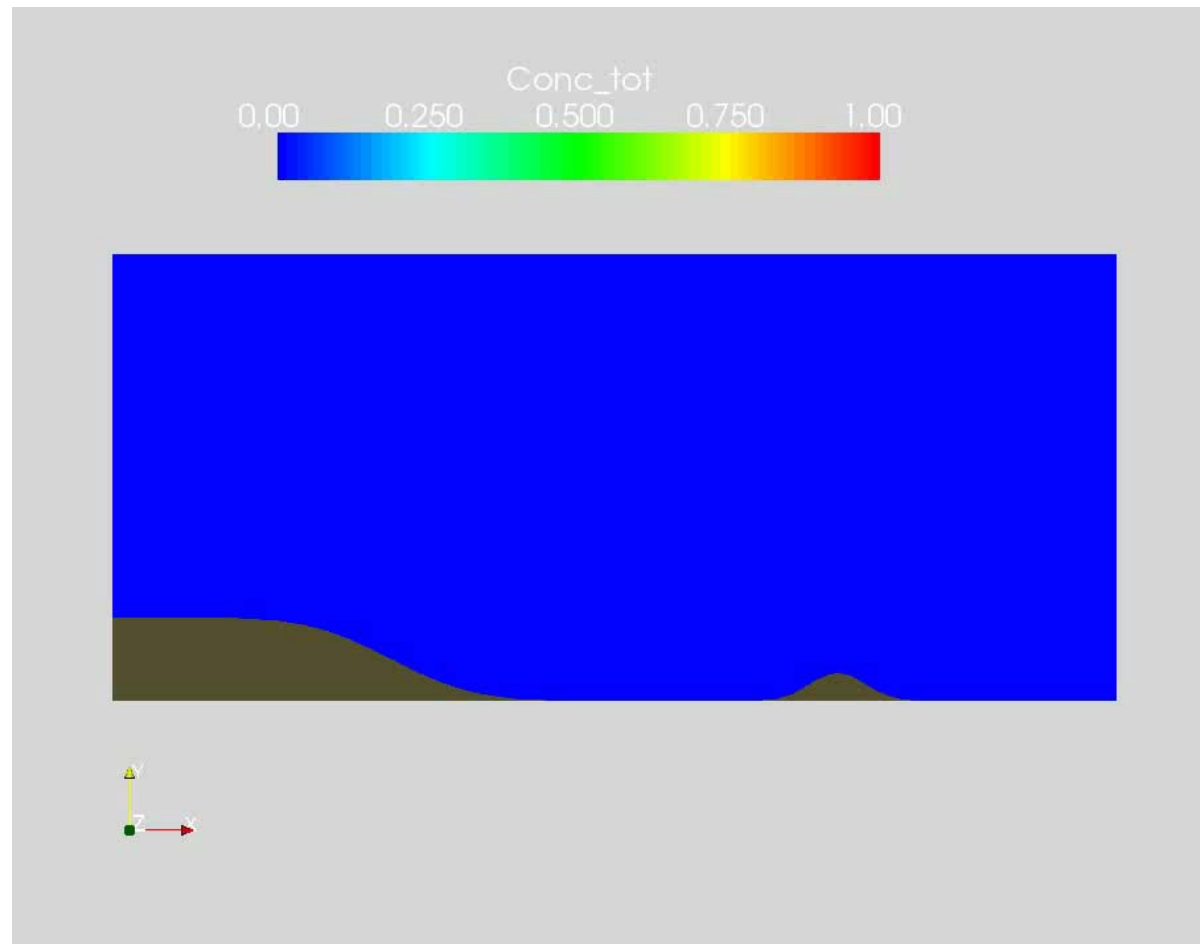
## *Deposit profiles*



1. Accumulation by dumping after the front travels down the slope.
2. Current is reflected at the hump.
3. Secondary current travels upstream and deposits on the slope.

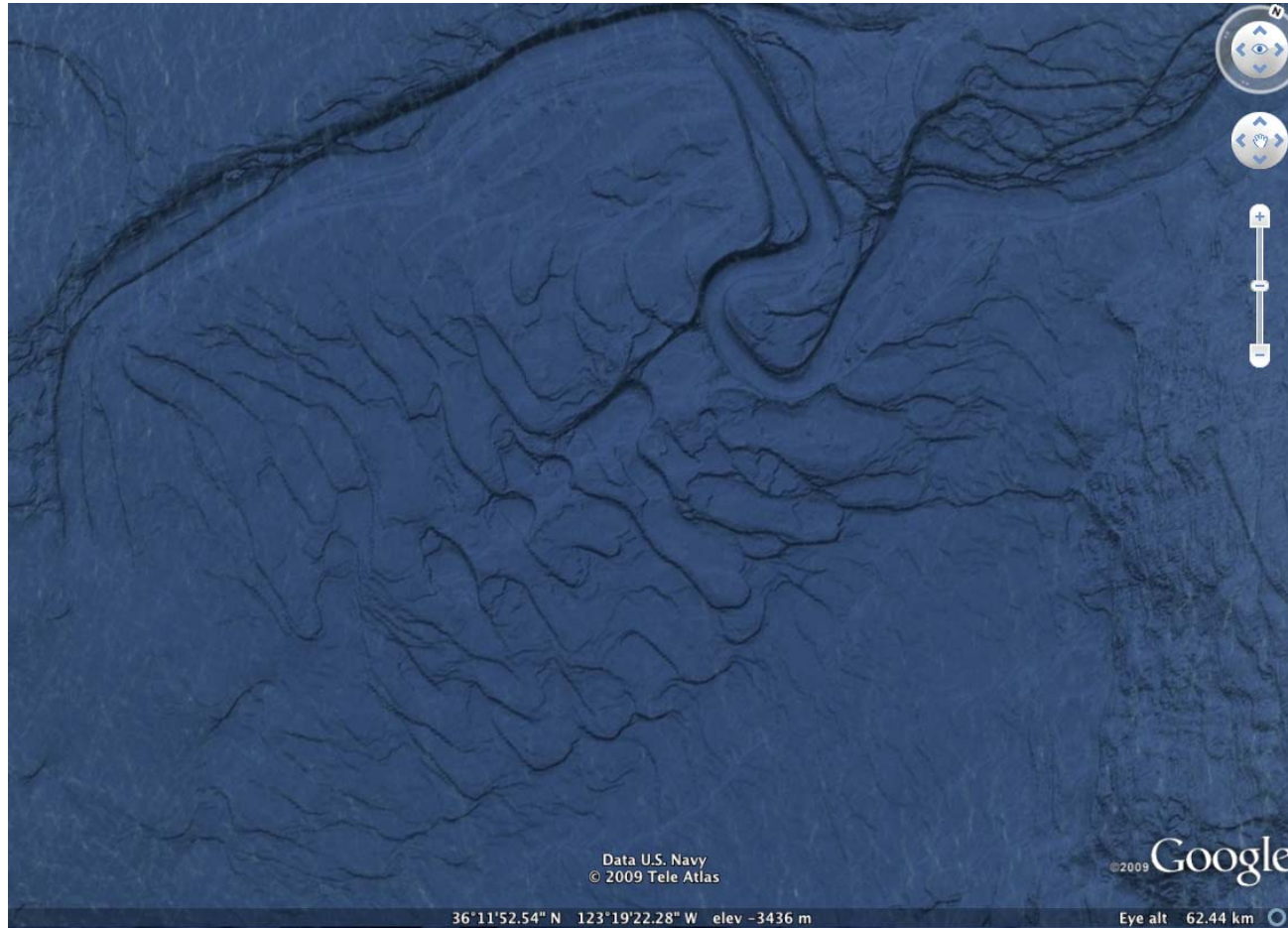
## *Filling of a minibasin*

*Interaction of gravity currents with submarine topography:*



# *Turbidity current propagating along submarine channel*

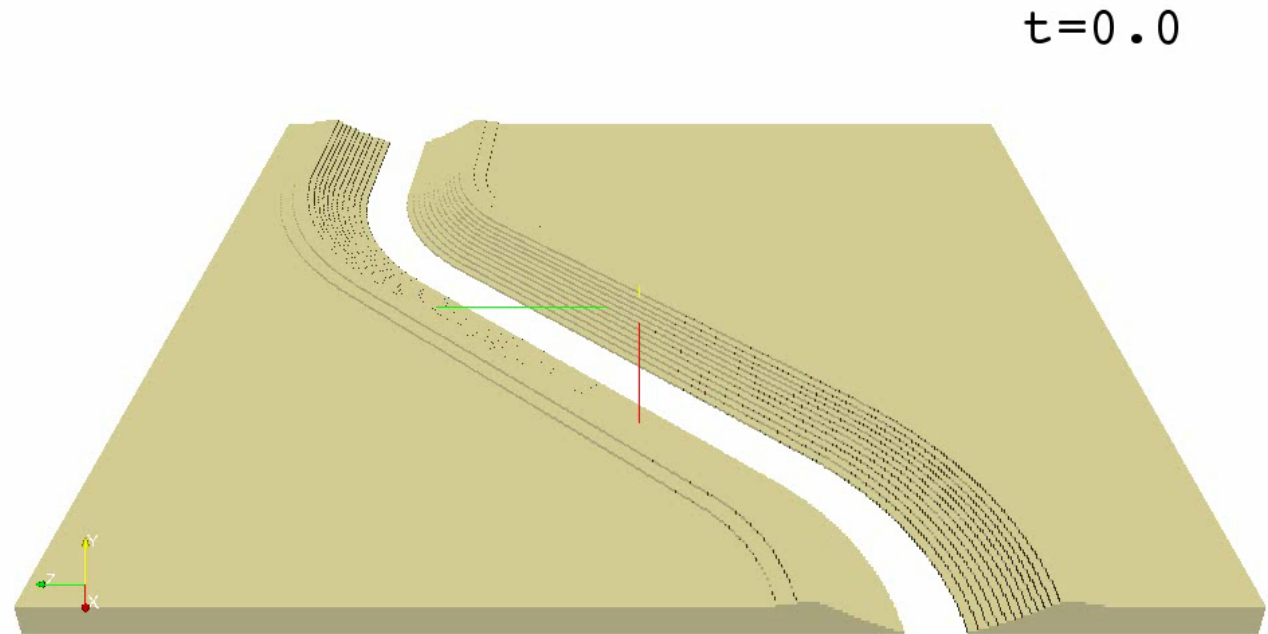
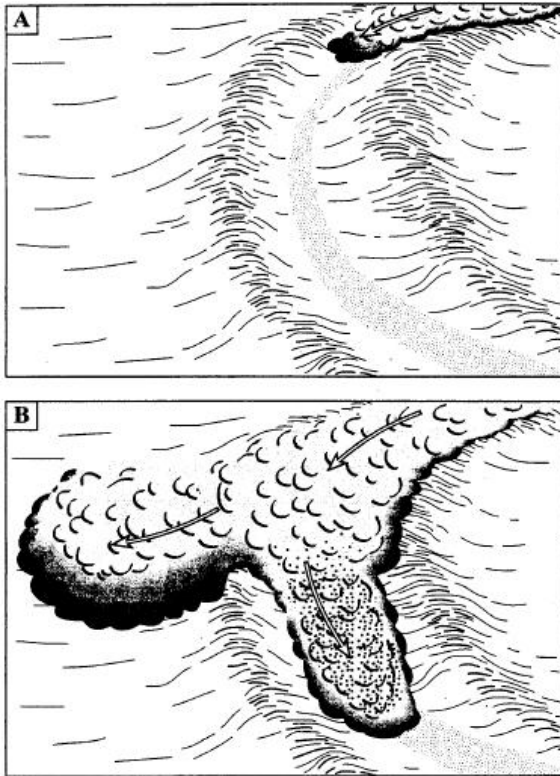
## *Formation of submarine channel-levee systems*



*Monterey Canyon fan*

# *Turbidity current propagating along submarine channel*

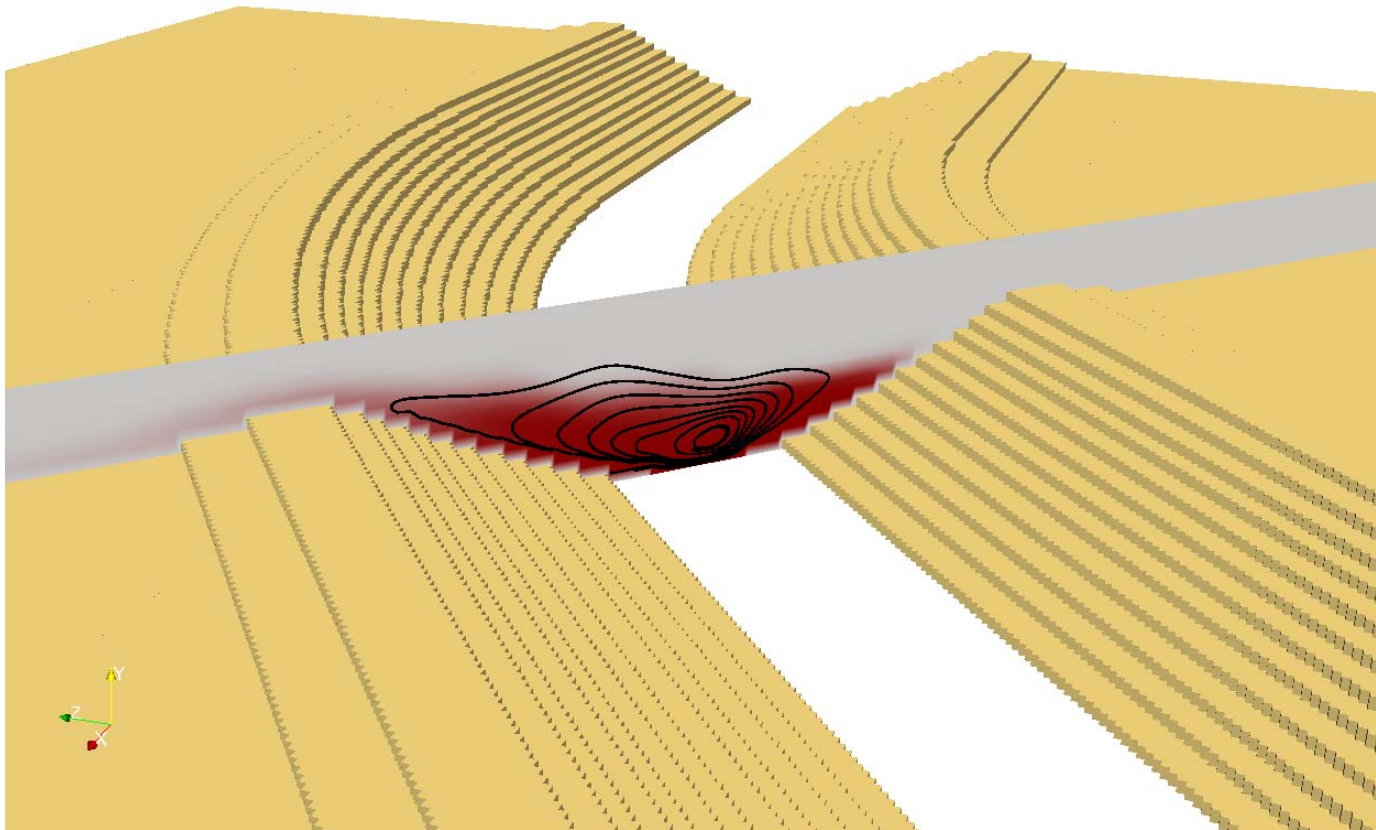
*‘Flow stripping’ in channel turns: lateral overflows*





# *Turbidity current/sediment bed interaction*

## *Secondary flow in submarine canyon bends*



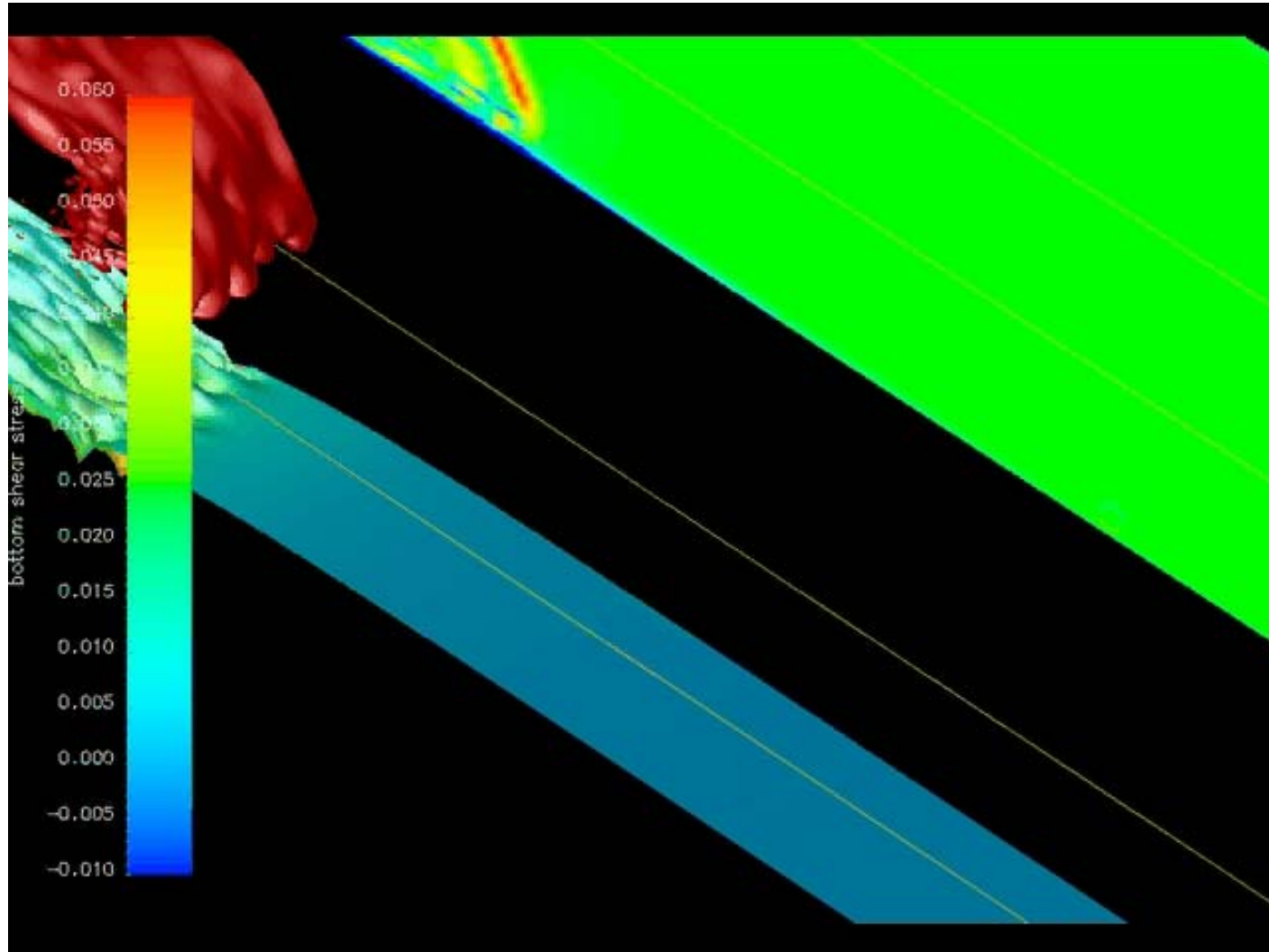
- *creates bed shear stress that causes lateral sediment transport*

## *Further development: Next steps*

- *Implementing and validating LES and RANS models, so that the code runs efficiently at large Reynolds numbers*
- *Coupling to larger-scale simulators, such as ROMS (Regional Ocean Modeling System), so that we can simulate the interaction of turbidity currents and river outflows with tidal flows, internal waves, along-shore flows, Coriolis effects etc.*
- *Refine particulate models to account for such effects as flocculation, etc.*

# *Gravity current flow over elevated circular cylinder*

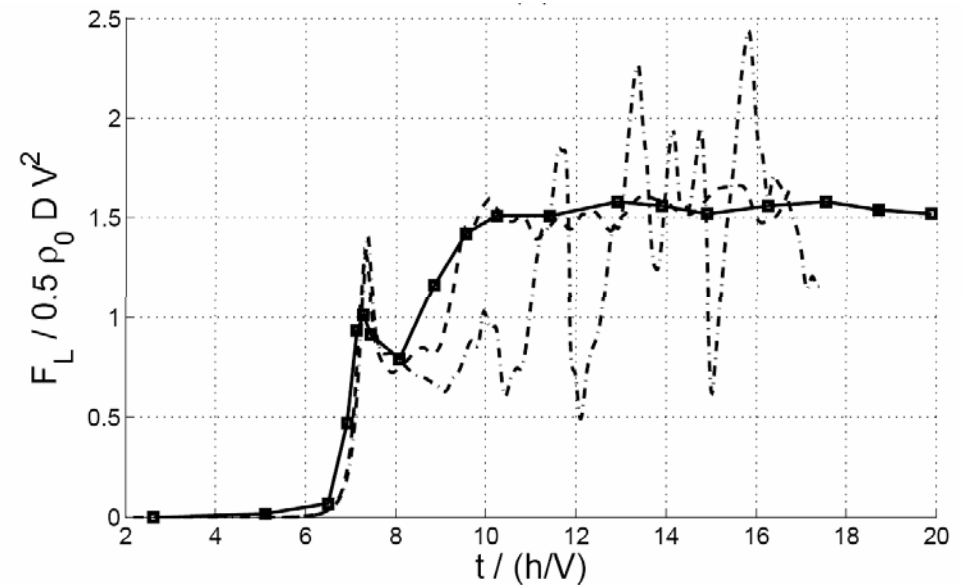
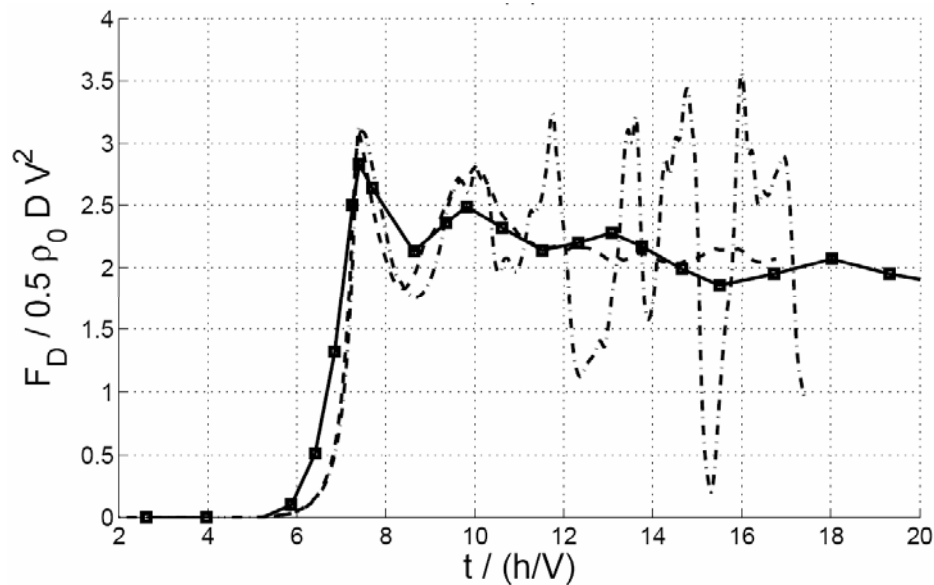
*Vorticity and shear stress:*



- *important for the prediction of erosion and scour*

# *Hazards posed by gravity and turbidity currents (cont'd)*

*Comparison with experiments by Ermanyuk and Gavrilov (2005):*



— experiment  
- - - 2D simulation  
- . - . 3D simulation

- *2D simulation captures impact, overpredicts quasisteady fluctuations*
- *3D simulation captures impact and quasisteady stages well*

## Summary

- *high resolution 2D and 3D simulations of gravity currents*
- *detailed information regarding sedimentation dynamics, energy budgets, mixing behavior, dissipation...*
- *important differences between 2D and 3D simulation results*
- *extension to gravity currents flowing down a slope, complex geometries, erosion and resuspension, submarine structures, levees*