

Selection of Geological Models for Uncertainty Assessment with a Novel Streamline Approach*

Michael D. Hogg¹, G. Michael Shook² and Michael Pyrcz³

Search and Discovery Article #40567 (2010)

Posted July 23, 2010

*Adapted from oral presentation at AAPG Annual Convention and Exhibition, New Orleans, Louisiana, April 11-14, 2010

¹Earth Science Department, Chevron Energy Technology Company, Houston, TX (michaelhogg@chevron.com)

²Reservoir and Production Engineering, Chevron Energy Technology Company, Houston, TX

³Earth Science Research and Development, Chevron Energy Technology Company, Houston, TX

Abstract

Exploration and appraisal efforts are progressively migrating to deeper and more poorly understood reservoir systems. Costs to assess commerciality alone can be extremely high. Consequently, the uncertainty space of geological features impacting in-place hydrocarbons and reservoir performance must be thoroughly evaluated for sound investment decisions.

Limited numbers of wells may be the only data source for pre-test reservoir characterization if seismic is of little use in mapping rock properties and architecture. The extremely small volume sampled by wells emphasizes the need to thoroughly investigate uncertainty distributions of reservoir properties. Numerous models may be required to fully capture geological uncertainty affecting economic evaluation. Available tools permit efficient batch running of many models once uncertainty ranges for input variables are established.

Our approach to dynamic ranking involves use of streamline simulation to characterize the spectrum of geological conditions influencing flow behavior. The simulations are simple single phase cases requiring minimal resources. Analysis of streamline data are performed with proprietary code. Results of the analysis include storage capacity, flow capacity and sweep efficiency vs. time for each model. Furthermore, a Lorenz coefficient (a standard measure of heterogeneity under dynamic conditions) is determined for each geological scenario. Models are ranked by the Lorenz coefficient, so that realistic distributions are included in economic uncertainty analysis.

Results are conditional to injector-producer schemes, net-to-gross, depositional architecture, facies relations and permeability-porosity structure. Consequently, a reasonable conceptual understanding of local depositional and diagenetic settings is necessary. Sensitivity of results to conditioning information is useful in discerning relative contributions of inputs and, if necessary, tuning the workflow.

We consider ranking the dynamic behavior of geological models as a recommended practice. Straightforward workflows provide effective distillation of large numbers of earth models to a select few for detailed flow simulation. Time consuming model recycling between simulation engineers and earth modelers is substantially reduced as well due to embedded quality control and a priori knowledge of flow characteristics.

References

Pyrcz, M.J., M. Sullivan, N.J. Drinkwater, J. Clark, A. Fildani, and T. McHargue, 2006, Event-base models as a quantitative laboratory for testing quantitative rules associated with deepwater distributary lobes: *in* R.M. Slatt, M. Bowman, J. Castagna, T. Good, J. Grace, R. Latimer, B. Loucks, M. Scheihing, R. Smith, (editors), Proceedings, Reservoir Characterization: Integrating Technology and Business Practices: Gulf Coast Section-SEPM Twenty-Sixth Annual Research Conference, Houston, TX, Gulf Coast Section SEPM 26th Annual Research Conference, CD-Rom, p. 923-950

Shook, G.M. and K.M. Mitchell, 2009, A robust measure of heterogeneity for ranking earth models: The F-PHI curve and dynamic Lorenz Coefficient: SPE 124625, 2009 SPE Annual Technical Conference, New Orleans, LA, Web accessed 16 July 2010, <http://www.onepetro.org/mslib/app/Preview.do?paperNumber=SPE-124625-MS&societyCode=SPE>



Selection of Geological Models for Uncertainty Assessment With a Novel Streamline Approach

**Michael Hogg , G. Michael Shook, Michael Pyrcz
Chevron Exploration Technology Company**

**AAPG 2010 Annual Convention & Exhibition
New Orleans, Louisiana**

Acknowledgments

Julio de la Colina

Bill Milliken

Elena Sapozhnikov

Irene Gullapalli

Barney Issen

Morgan Sullivan

Mike Waite

Larry Zarra

Joseph Hovadik

Tom Mooney

Alan Bernath

Sebastien Strebelle

Dan Khan

Himansu Rai

De Ville Wickens

Moon Chaudhri

Dave Larue

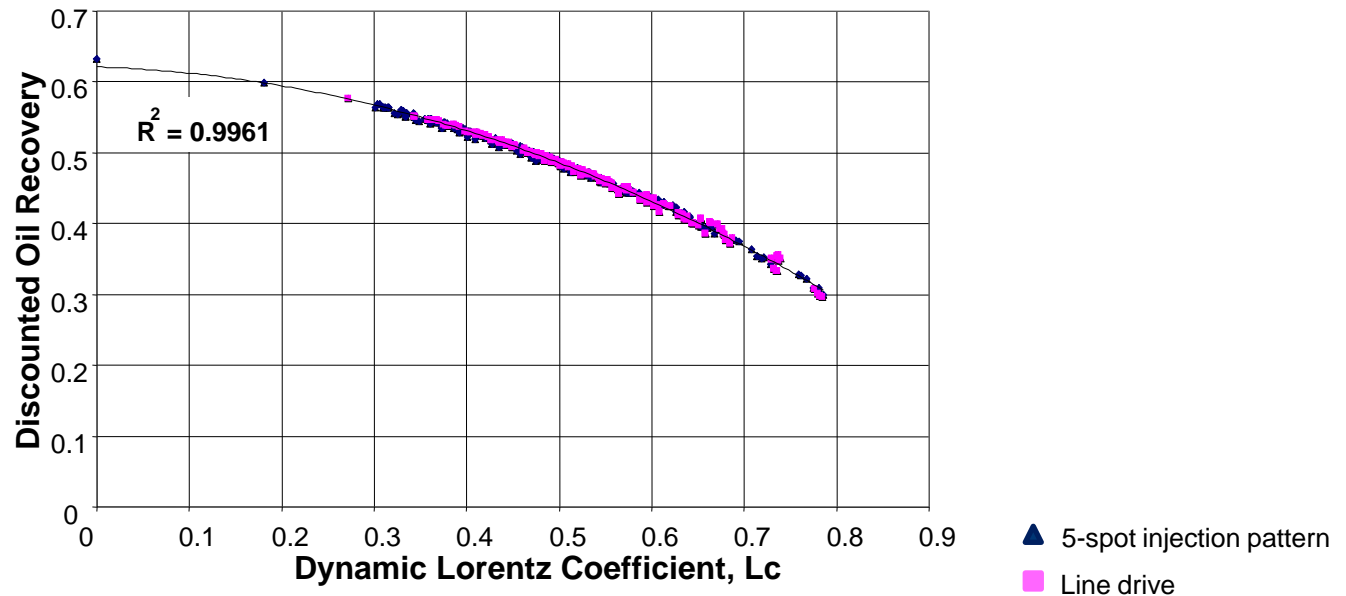
Objectives of Our Approach

- n Provide appropriate end-member depositional architectures relative to a deterministic base case to adequately span the uncertainty space of possible geological conditions.
- n Provide a basis for dynamic ranking performance of reservoir (geological) models prior to significant time investment by reservoir (simulation) engineers.
- n Increase the efficiency of the “static” modeling workflow by ranking architecture-based heterogeneity prior to detailed modeling of petrophysical properties.
- n Eliminate the “hey! ...your low case is too connected...” concern of simulation engineers by having in-hand quantitative connectivity assessment.

Reasons for Our Approach

Shook and Mitchell (2009) demonstrated the dynamic Lorenz coefficient to be the most robust of 5 studied measures for ranking models by dynamic heterogeneity. Their evaluation included 450 simulation cases and their results demonstrate heterogeneity is a very good predictor of project economics (figure below).

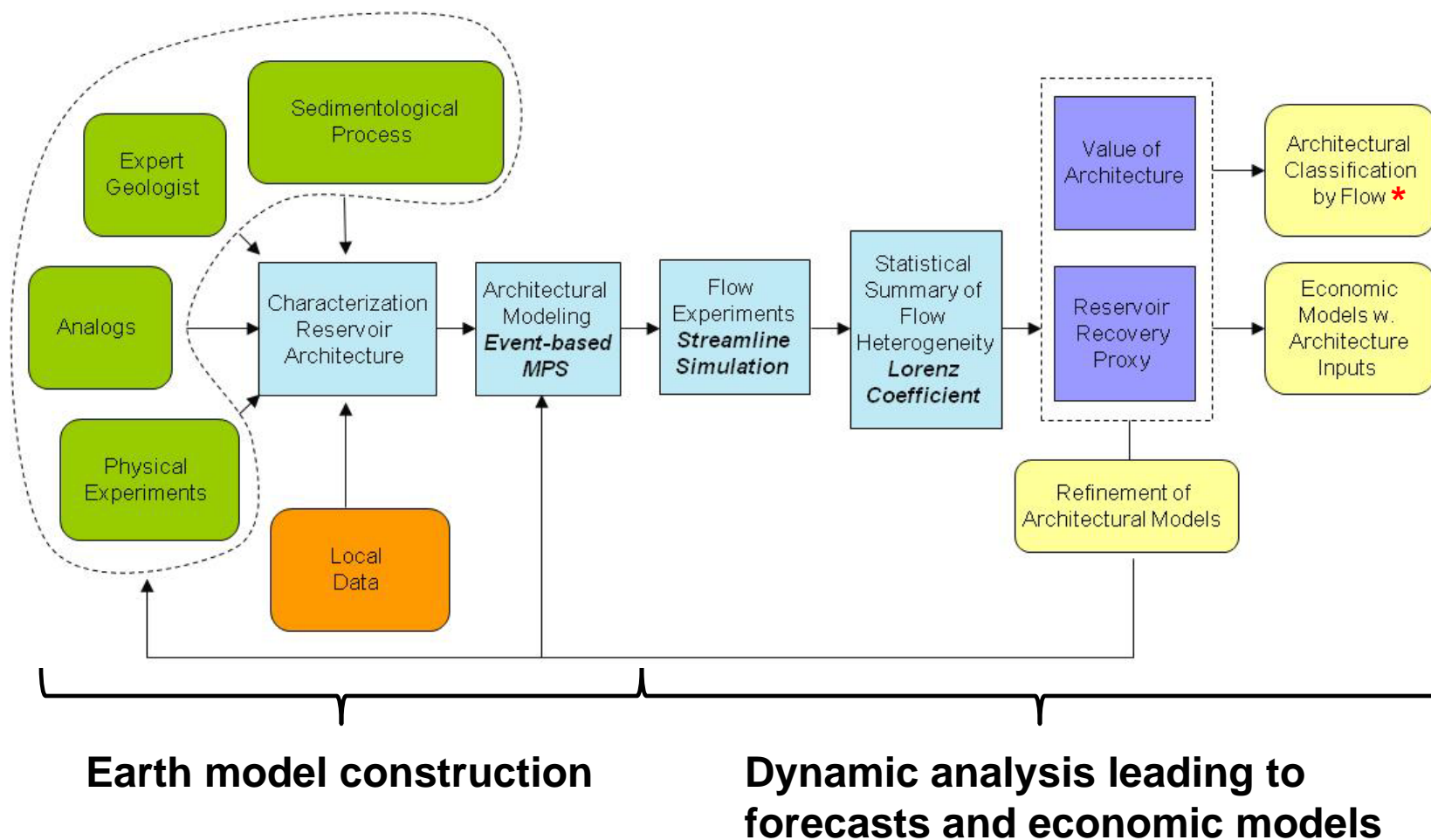
Advances in modeling of depositional settings (e.g., Pyrcz, et al., 2006) allow for the construction of detailed expert-driven rule-based architectures which together with permeability govern heterogeneity



Shook, G, Michael, and K. M. Mitchell, 2009, A Robust Measure of Heterogeneity for Ranking Earth Models: The F-PHI Curve and Dynamic Lorenz Coefficient: SPE 124625, 2009 SPE Ann. Technical Conference, New Orleans, LA.

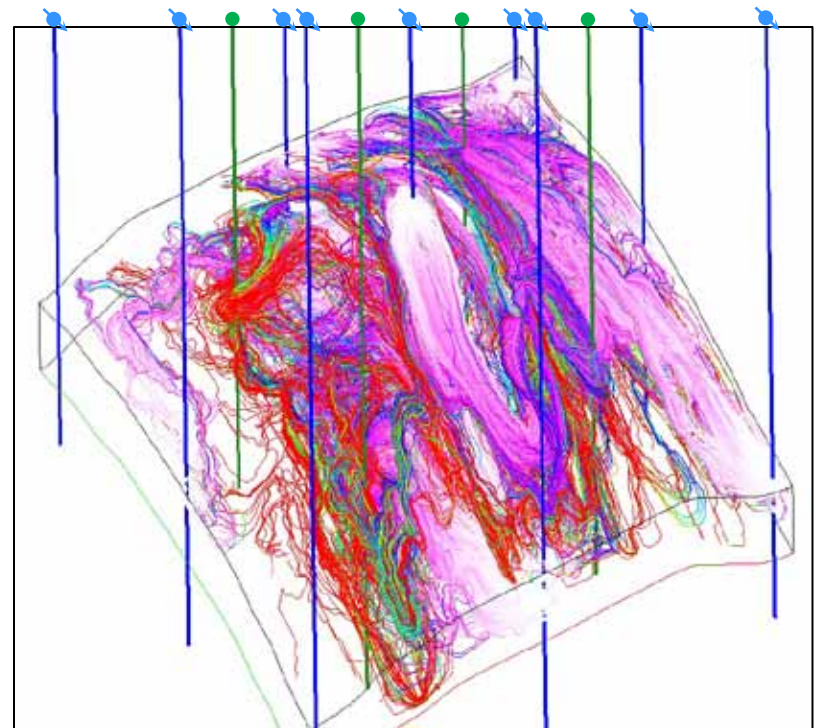
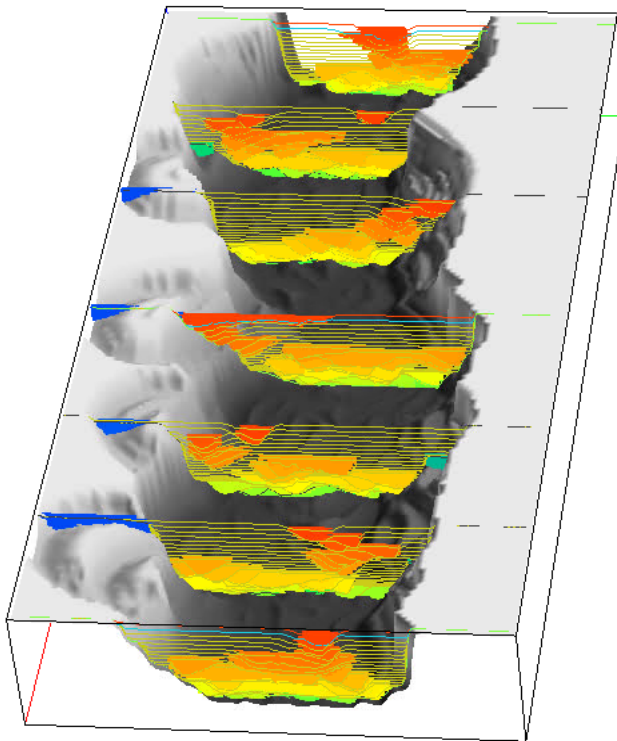
Pyrcz, M.J., et al., 2006, Event-base Models as a Quantitative Laboratory for Testing Quantitative Rules associated with Deepwater Distributary Lobes: Gulf Coast Section SEPM 26th Ann. Research Conference, pp. 923-950.

Process of Dynamic Heterogeneity Assessment

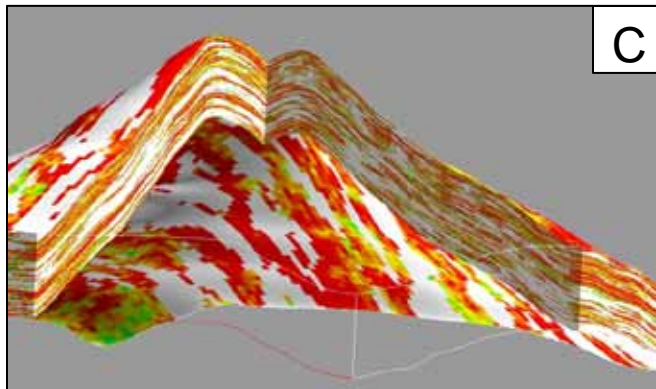
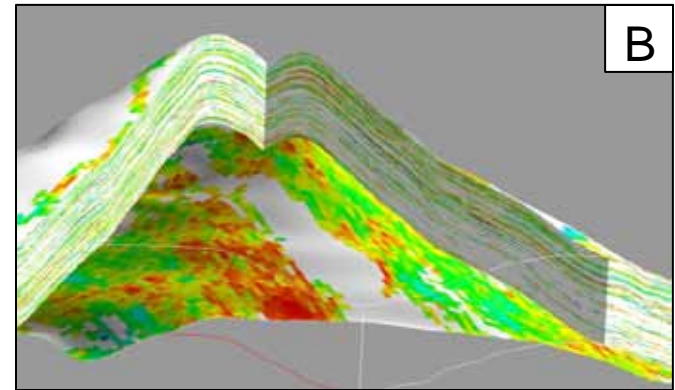
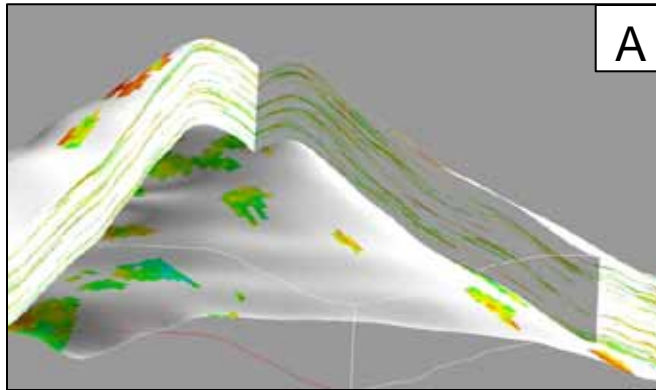


Key Words

- n Architecture
- n F – PHI curve
- n Dynamic Lorenz coefficient



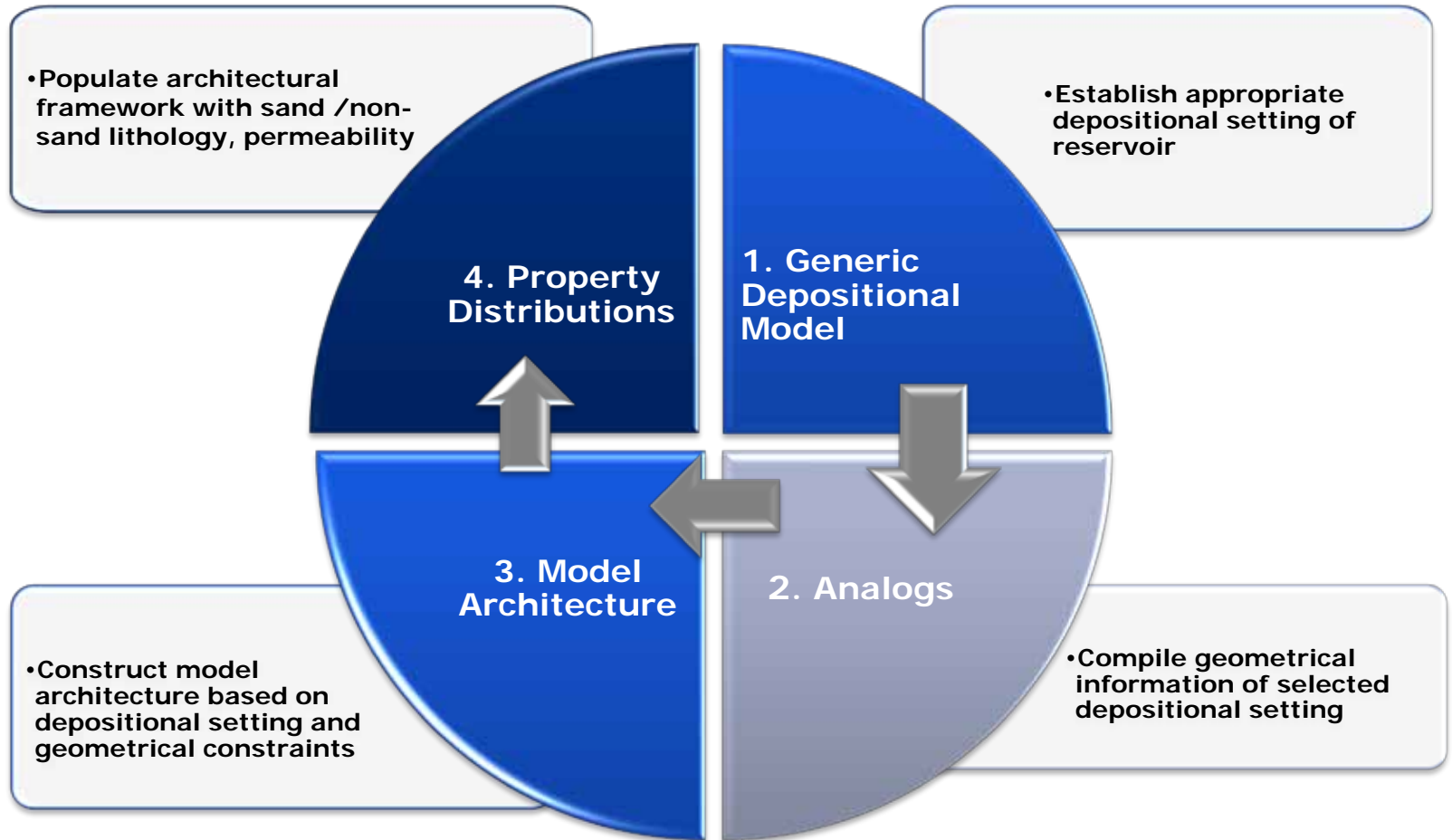
Factors Affecting Streamline Based Heterogeneity



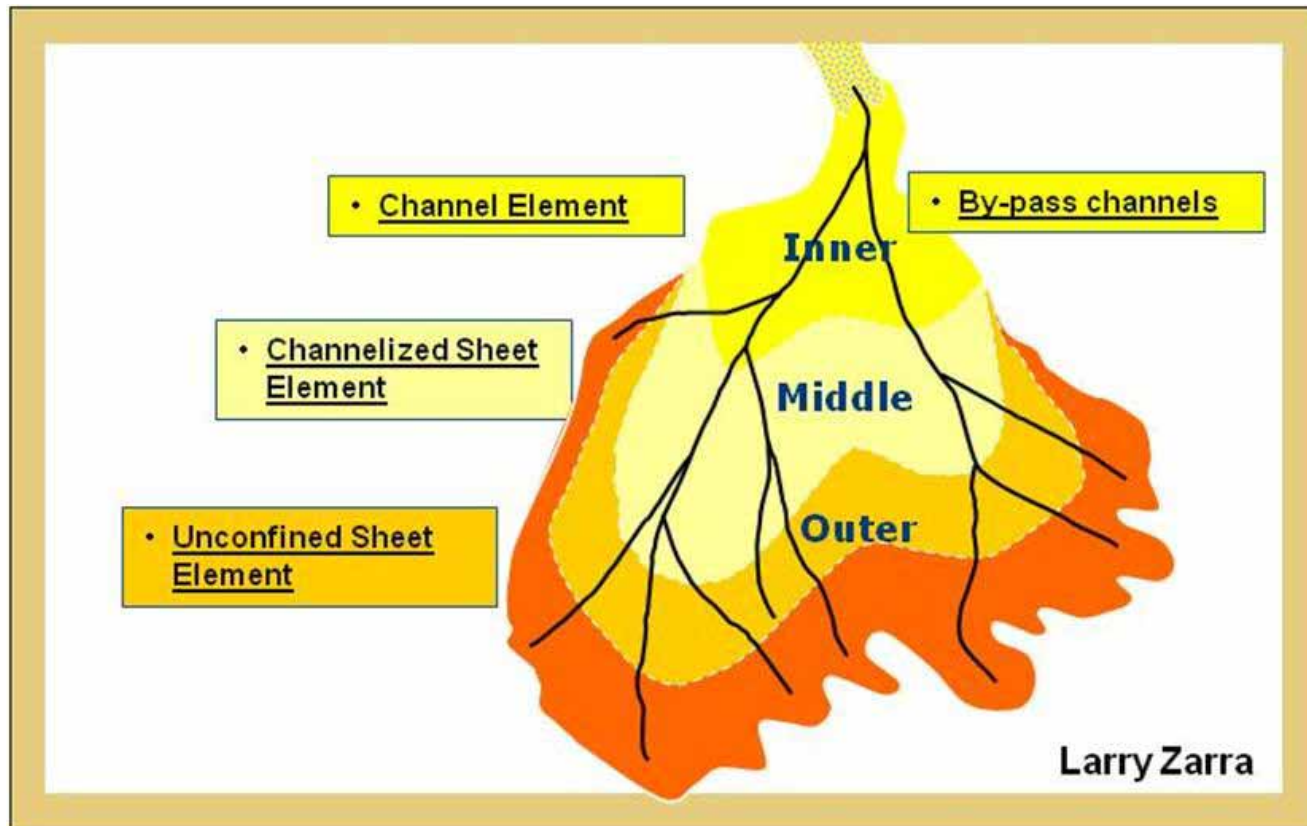
Examples of depositional architecture, net-to-gross, and permeability affecting heterogeneity described by the Dynamic Lorentz coefficient.

Image	Fan Position	Predominant Architectural Element	Net-to-Gross		Lorentz Coefficient Swept PHI	Lorentz Coefficient Total PHI
			Net-to-Gross	Permeability		
A	distal	sheet	10	low	0.62	0.74
B	mid	ch. sheet	30	low	0.52	0.59
C	proximal	channel	50	high	0.39	0.42

Model Architecture Construction



Establish Depositional Setting



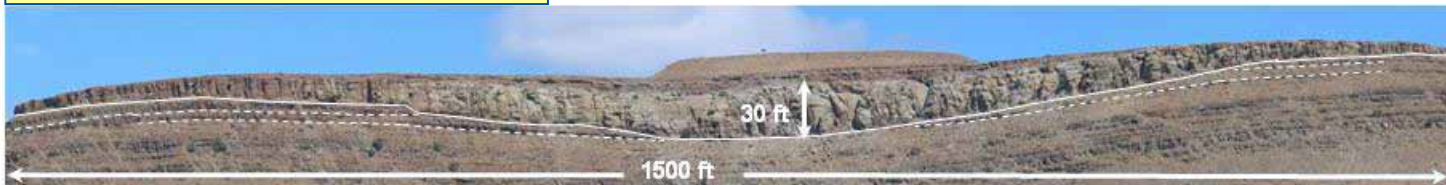
- n A submarine fan depositional setting was selected to model architecture.
- n The depositional setting of each case was constant areally.
- n Evaluated a continuum of inner-to-distal fan architectural models.

Architecture Analogs: Skoorsteenburg Fm., Tanqua Karoo Basin, South Africa

• Channel Element



• Channelized Sheet Element



• Channelized Sheet Element

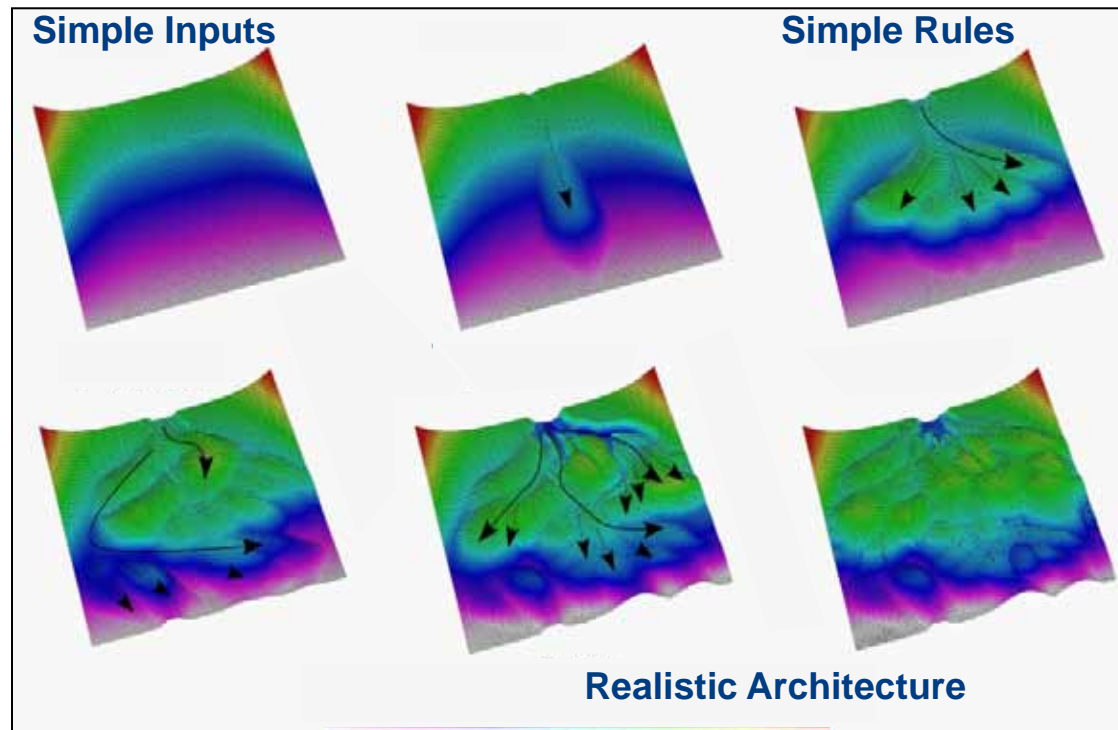


• Unconfined Sheet Element



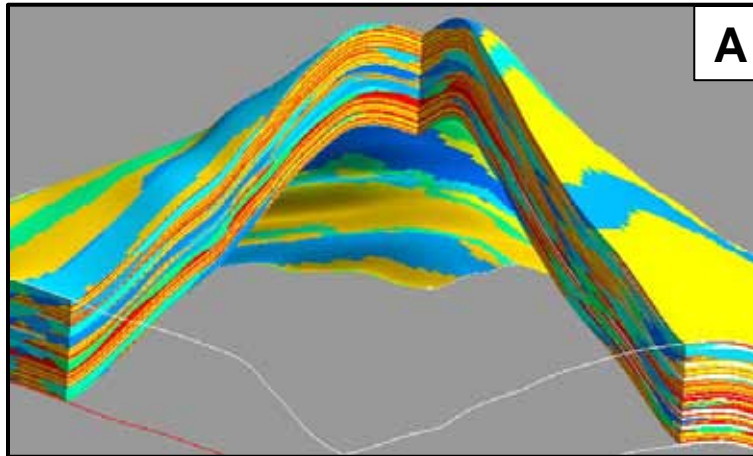
Construction of Model Architecture

- Event-based models – realistic architectures, by a rule-based forward geostatistical method developed in Chevron.

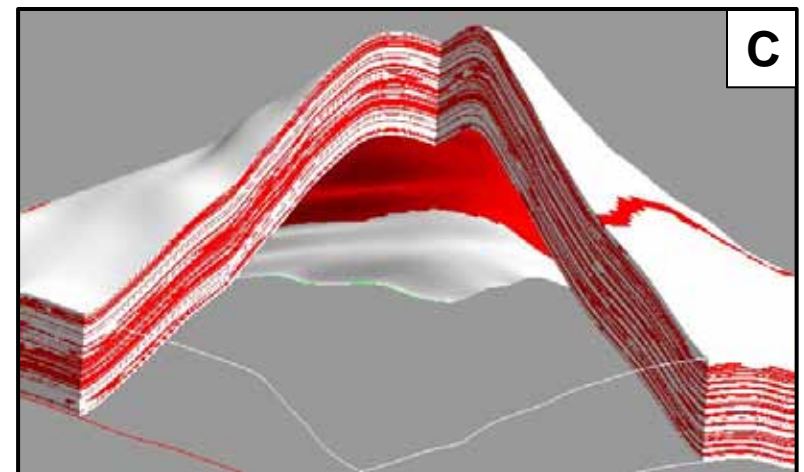
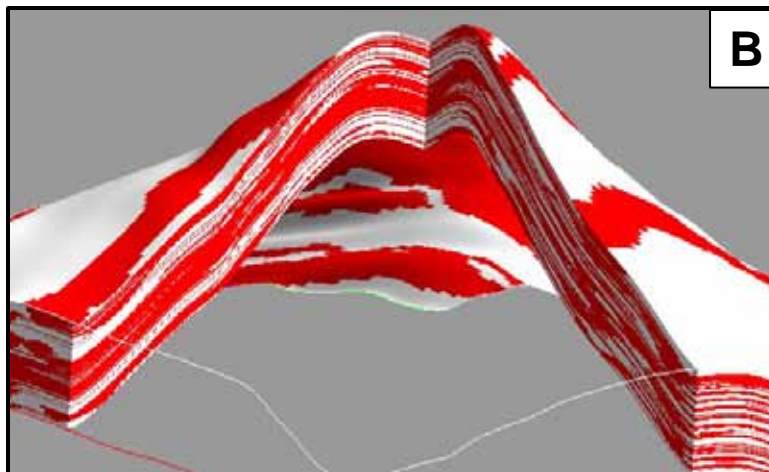


(Pyrzcz et al., 2006)

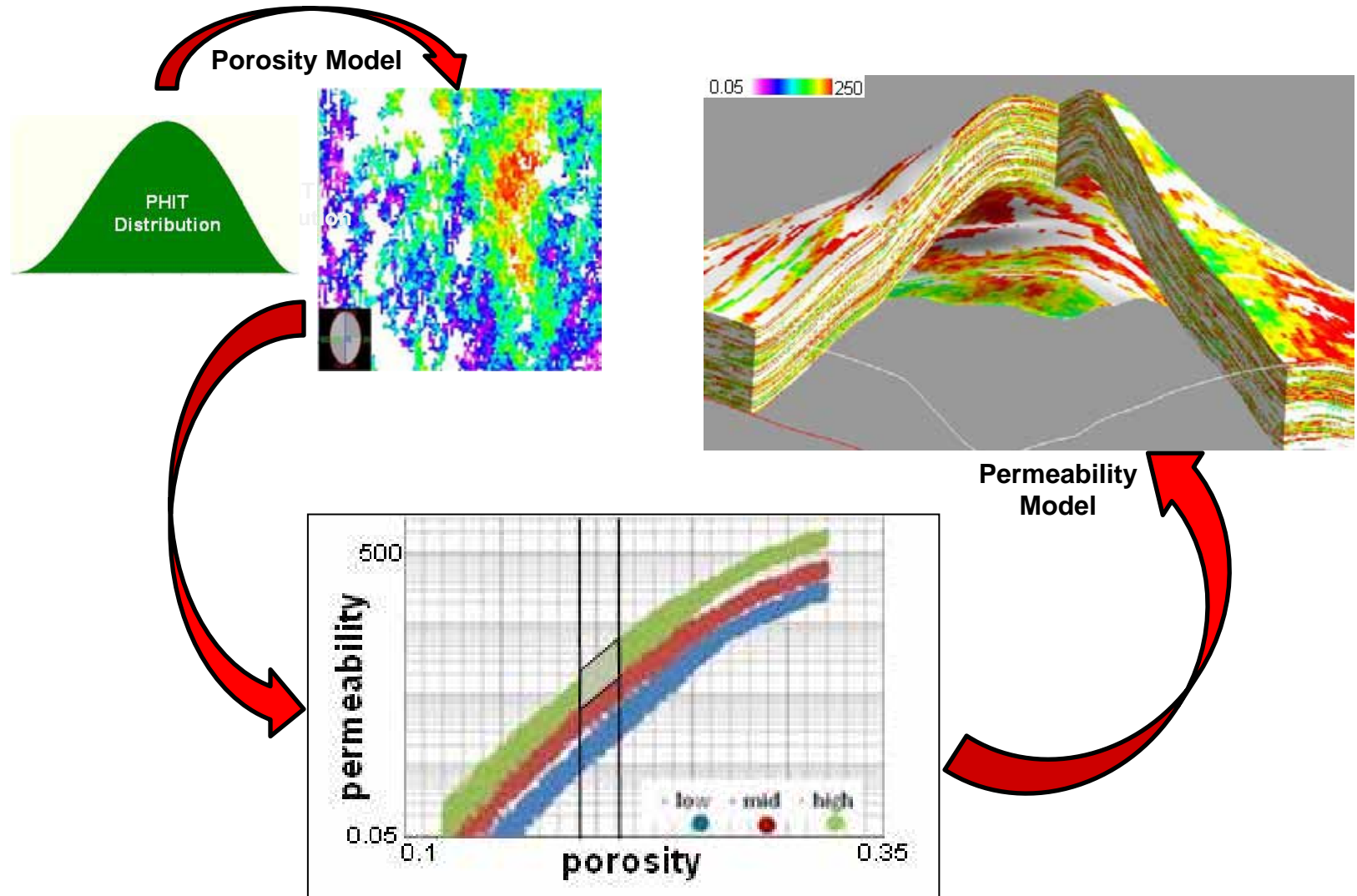
Sand – No-sand Training Images Derived from Architecture Models



- n **A.** Architecture model having channel (blue-green) and sheet elements (orange-red) in submarine fan setting.
- n **B.** Channel-dominant training image for sand – no-sand modeling in proximal fan settings.
- n **C.** Sheet dominant training imaged for sand – no-sand modeling in more distal fan settings.



Petrophysical Properties

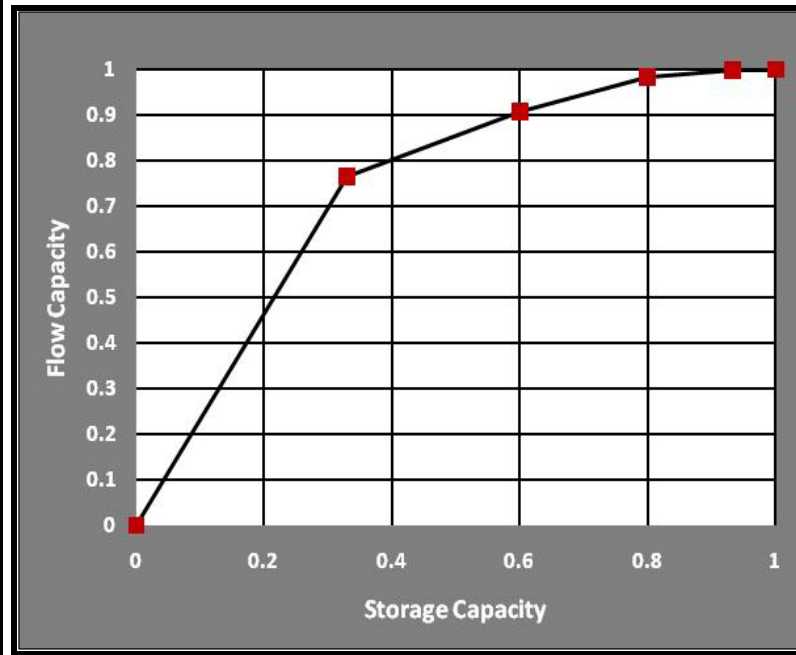


Streamline simulation

Flow Capacity – Storage Capacity(F- PHI) and Lorenz Coefficient

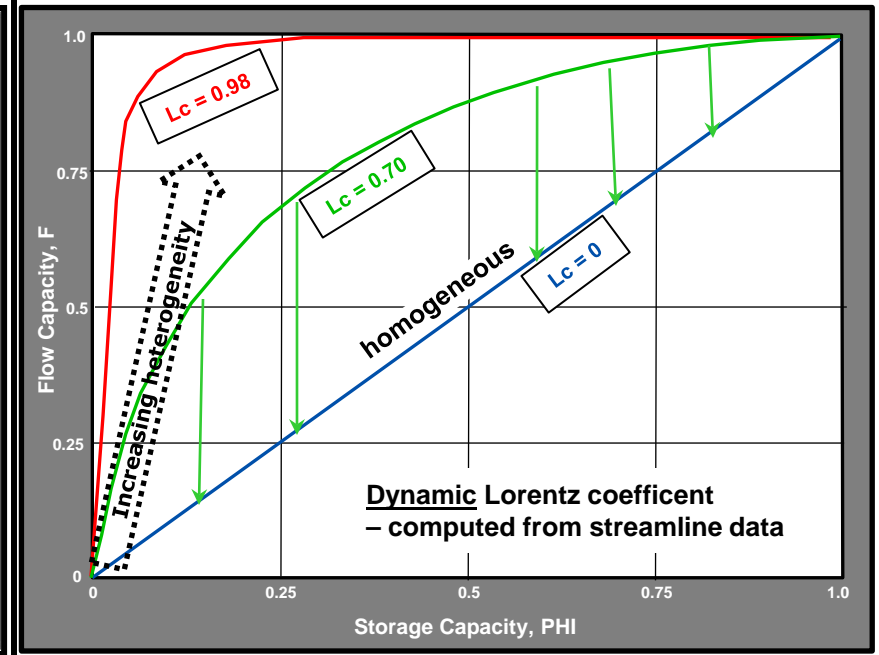
Flow Capacity – Storage Capacity

h(ft)	K(md)	j	Kh	j h	F	C
					0	0
5	500	0.25	2500	1.25	0.7654	0.33
5	100	0.2	500	1	0.9077	0.6
5	50	0.25	250	0.75	0.9834	0.8
5	10	0.1	50	0.5	0.9985	0.933
5	1	0.05	5	0.25	1	1
			3305	3.75		



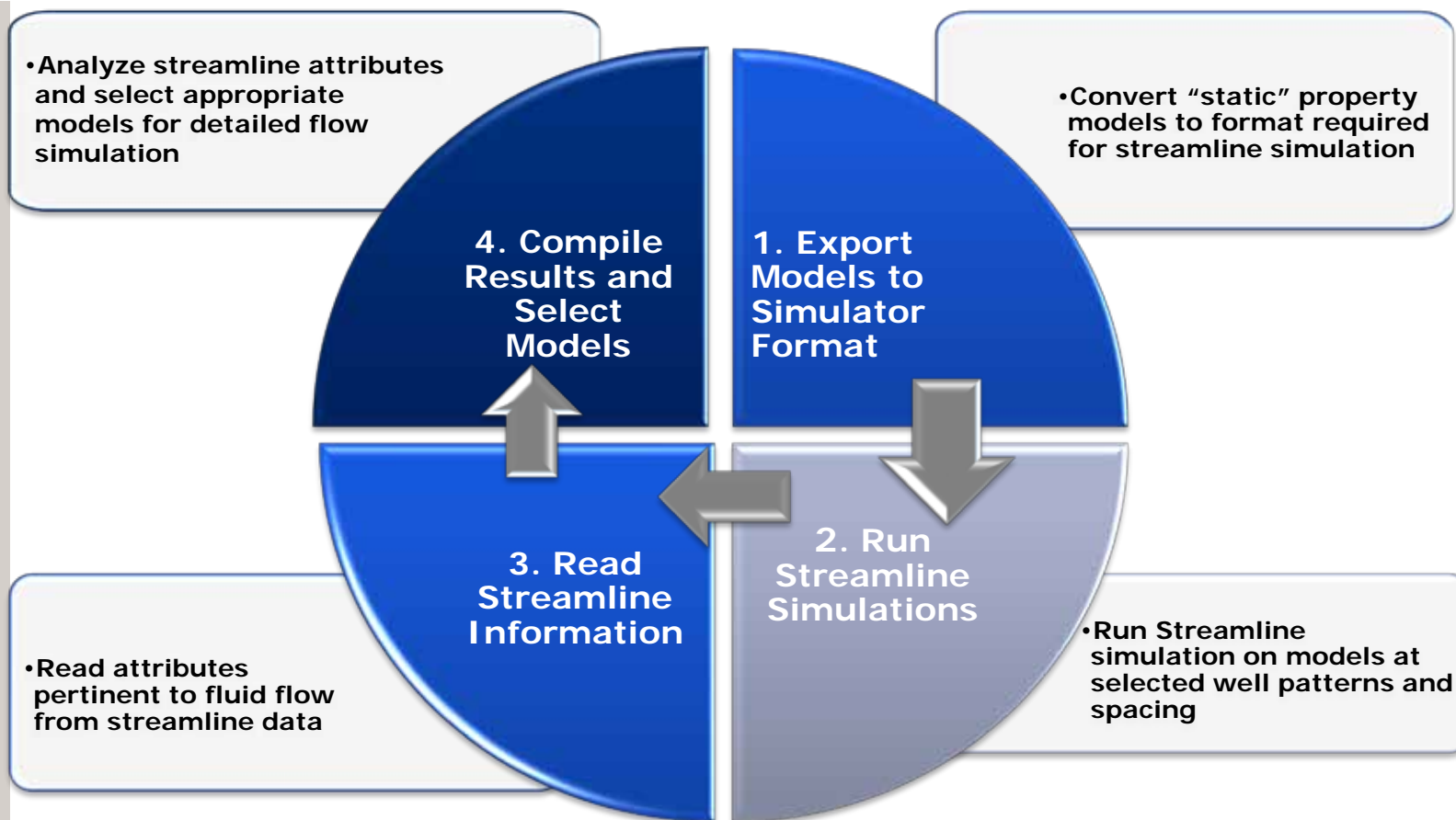
Lorenz Coefficient

$$L_c = 2 \int_0^1 F dF - 0.5$$



Modified from Shook and Mitchell, 2009, SPE 124625 and references therein

Streamline Workflow



Streamline Analytical Procedure

- n Generic simulation deck contains 3 include statements for property grid and well information.
- n Run a streamline simulation for a few time steps.
 - n No transients; steady state (volume replacement)
- n Read streamline volumetric flow rate and time of flight.
- n Compute pore volume represented by each streamline
- n Calculate Dynamic F-F curve and Lorenz coefficient (heterogeneity indicator; Shook and Mitchell, 2009)

Abbreviations

Lc – dynamic Lorenz coefficient.

Lc1 – dynamic Lorenz coefficient computed from swept pore volume.

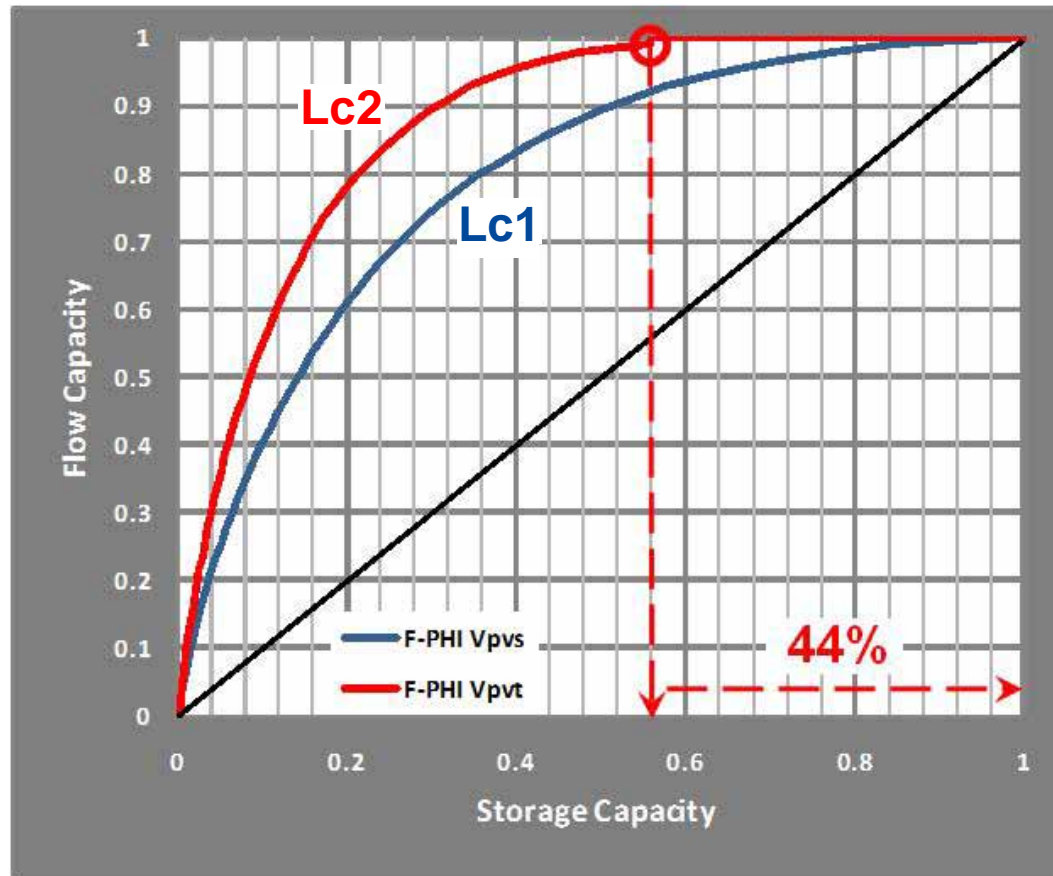
Lc2 – dynamic Lorenz coefficient computed from total pore volume.

Vpvs – swept pore volume. **Vpvt** – total pore volume. **PV** – pore volume.

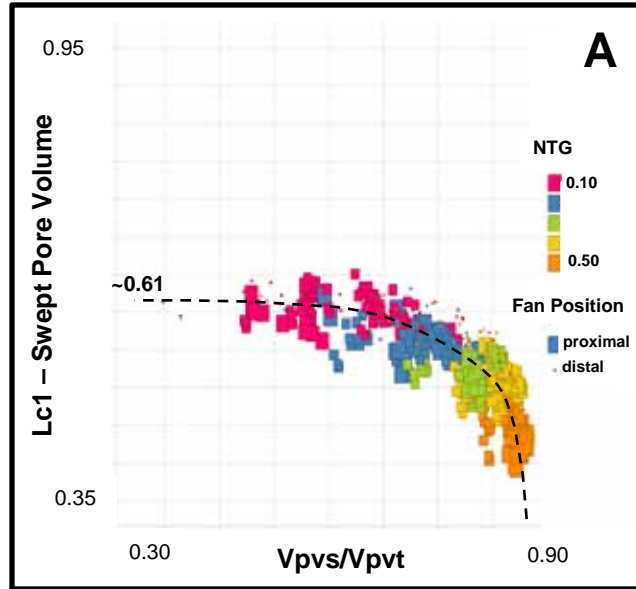
Two Storage Capacity – Flow Capacity Curves can be Computed



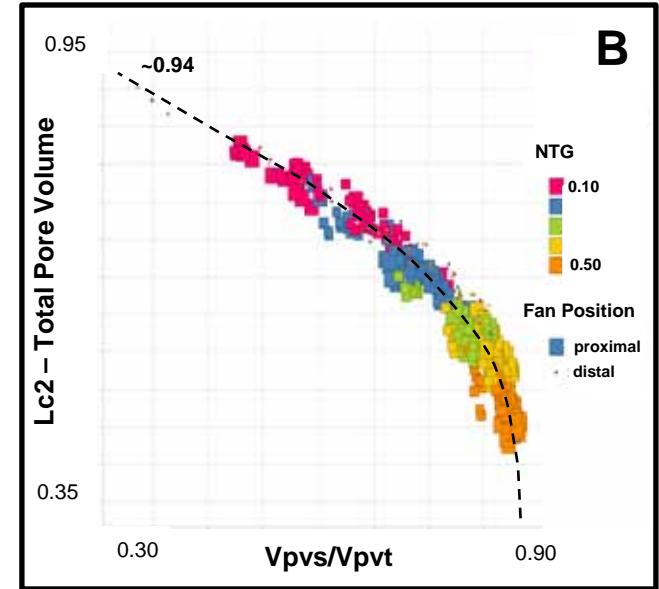
- n Blue curve (Lc1) describes heterogeneity for swept PV
- n Red curve (Lc2) describes heterogeneity for total PV
- § 44% of PV is unswept



Lc1 and Lc2 (Lorenz Coefficients) Plotted vs. Swept/Total Pore Volume Ratio



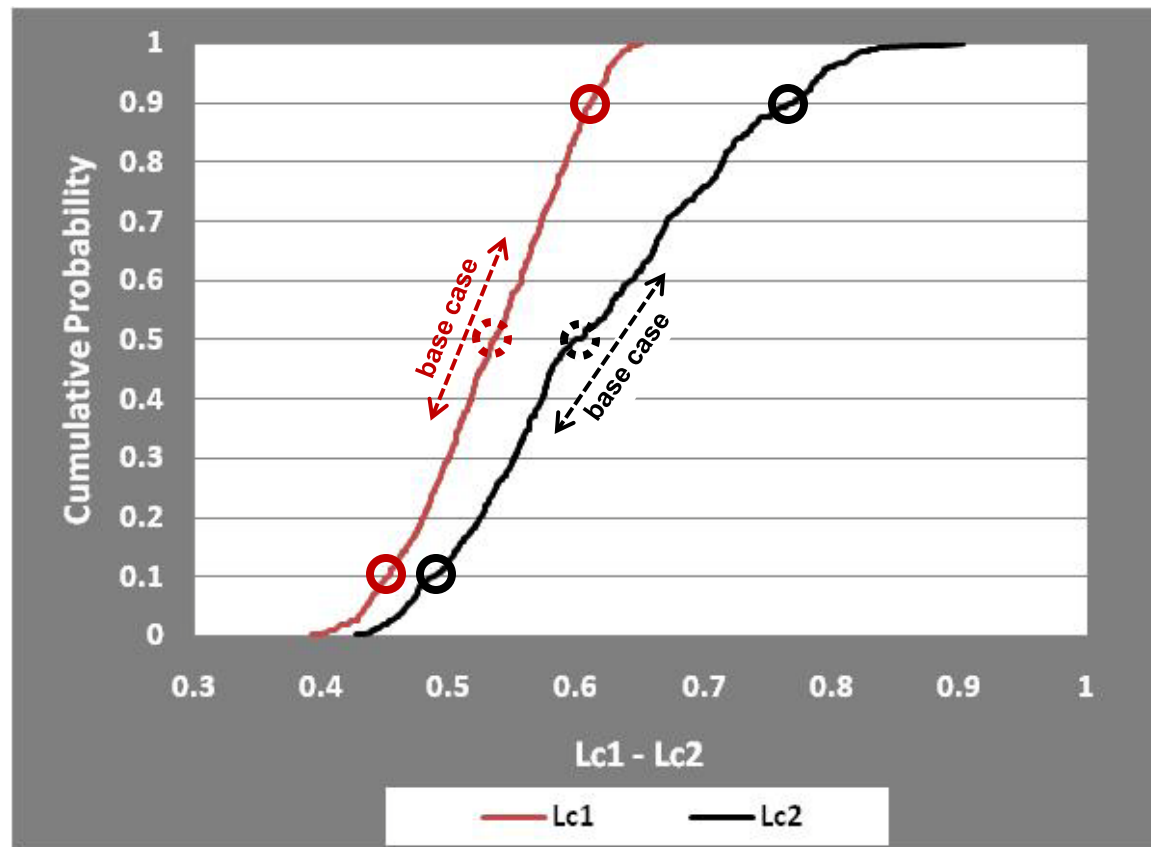
Field-wide
Well-by well also



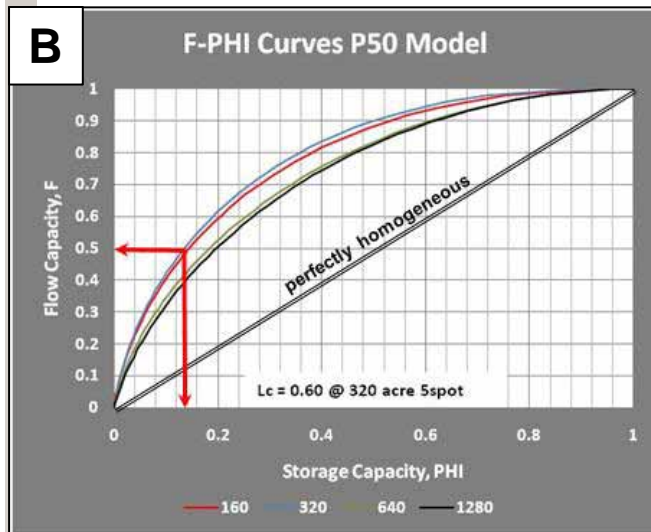
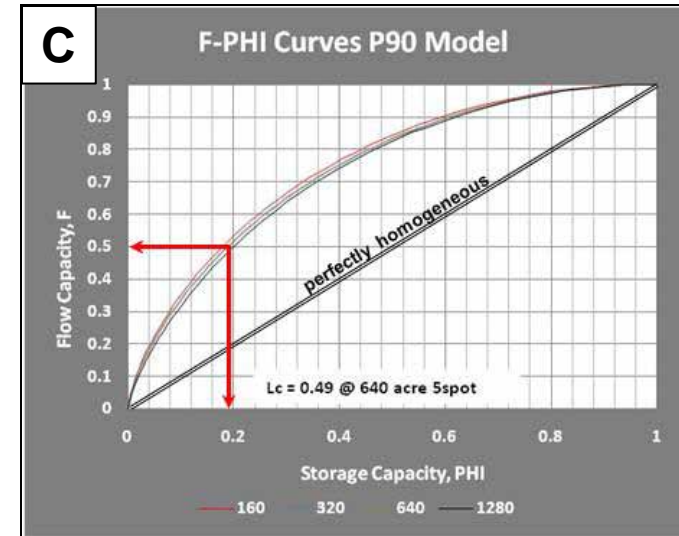
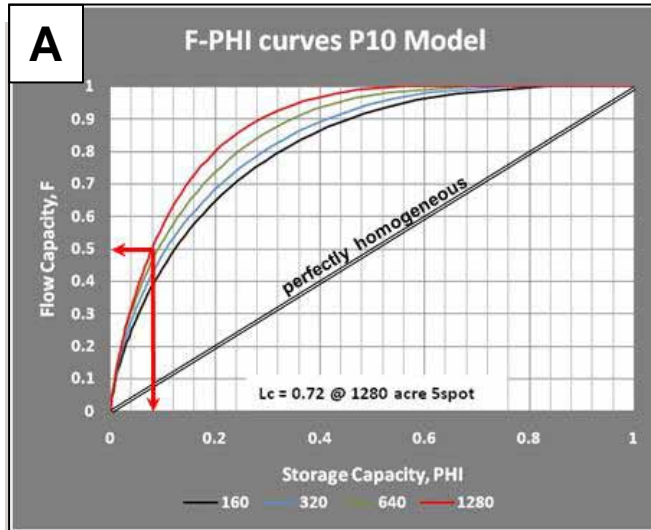
- n **A.** Crossplot of swept pore volume to total pore volume ratio vs. Lc1 computed from swept pore volume. NTG scale in color boxes. Increasing symbol size representing more proximal positions.
 - n Lc1 plummets at 30% NTG and 0.85 Vpvs/Vpvt.
 - n Lc1 plateaus at 0.61.
 - n Significant implications with respect to thief zones in secondary and tertiary recovery
- n **B.** Crossplot of swept pore volume to total pore volume ratio vs. Lc2 computed from total pore volume. NTG scale in color boxes. Increasing symbol size representing more proximal positions.
 - n Lc2 diminishes linearly until ~ 30% NTG and 0.80 Vpvs/Vpvt then plummets in similar fashion as Lc1.
 - n More applicable to primary recovery.

Model selection: CDF ranking

- n Order to rank Lc results and select streamline cases for detailed modeling.
- n Compare associated ranked streamline results and select models based on balancing attributes of respective properties.

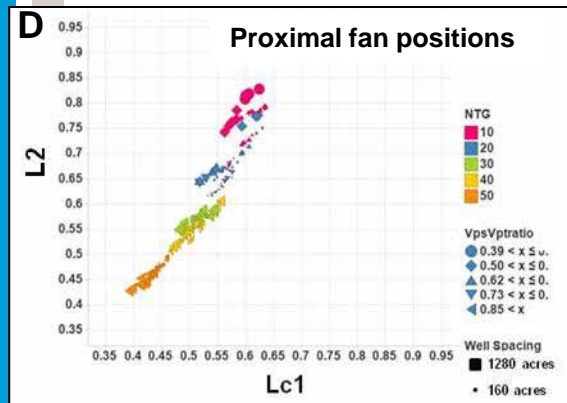
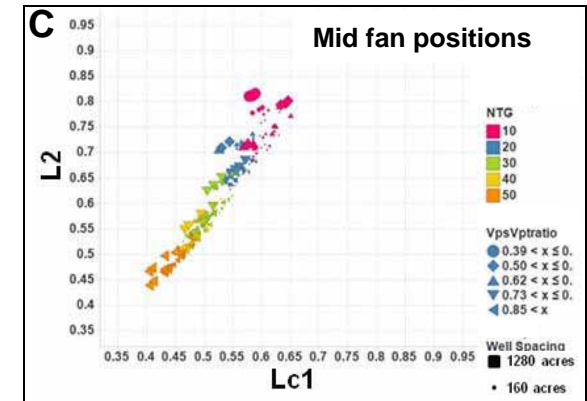
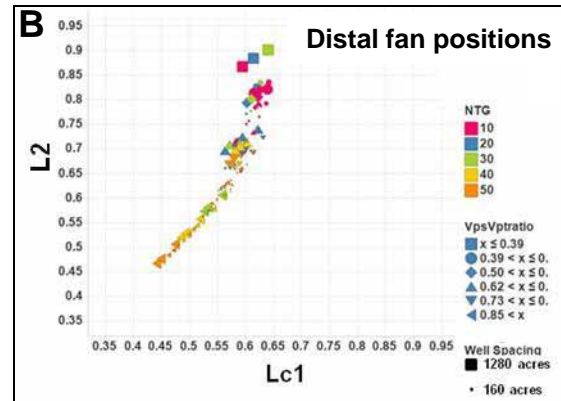
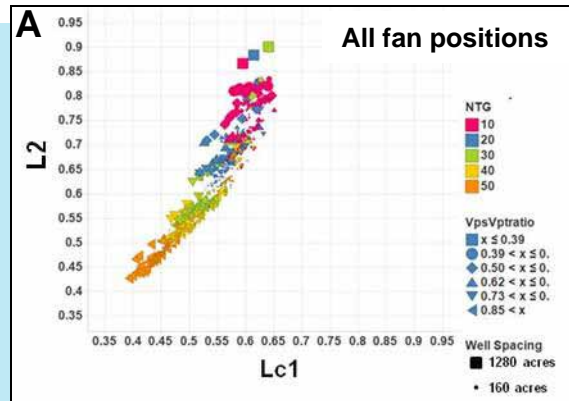


Model selection: CDF ranking



- n Example of models selected by CDF ordering of L_{c2} from previous slide.
 - n Note that < 20% of total pore volume contributes to 50% flow capacity for all cases.
- n A. 50% flow capacity from 8% PV.
- n B. 50% flow capacity from 12% PV.
- n C. 50% flow capacity from 19% PV.

Model selection: Multivariate Analysis



Displayed variables include:

- Lc1 (x-axis)
- Lc2 (y-axis)
- net-to-gross (color box scale)
- Vpvs – Vpvt ratio (plot symbol shape)
- 5-spot pattern size (plot symbol size)

- n Multivariate plots useful for selection of cases for detailed modeling.
- n Depending on level of confidence in depositional setting one may elect to rank models for detailed analysis using all depositional model cases (A), or rank models based on specific depositional positions (B, C, and D).
- n High-level understanding (expert opinion) of, e.g., development strategy (exploration/appraisal) dictates variable combinations appropriate for model ranking.

Conclusions

- n Expert guided rule-based depositional models provide detailed and conceptually accurate reservoir architecture essential to ascertain the uncertainty range of fluid-flow characteristics critical to economic analysis.
- n The dynamic Lorentz coefficient provides a means of rapidly ranking earth models to capture the uncertainty space of subsurface geological conditions.
- n Correlation of the dynamic Lorentz coefficient to key economic drivers may provide early insight into a projects financial viability.
- n Early evaluation of heterogeneity enhances efficiency of the modeling workflow. Simulation engineers also receive earth models with a priori understanding of heterogeneity.



Thank you

