

# Keep an Eye on Your Basement! – The 3D Version

John Peirce\*  
GEDCO, Calgary, AB  
jwpeirce@gedco.com

and

Dave Caulfield, Bob Charters, Dumitru Ion, Hassan Hassan and Randy Kolesar  
GEDCO, Calgary, AB, Canada

## Summary

Twenty some years ago Bernard Coulott of Imperial Oil exhorted us to “Keep an eye on your basement!” during a CSEG luncheon talk. In 2004, we presented several wide ranging geological examples of the influence of basement structure on the overlying stratigraphy (Peirce and Griffith, 2004) and emphasized how far up in the section such effects could influence trap and reservoir development. This paper focuses on how to map magnetic basement quickly and effectively in 3D on a seismic work station using High Resolution AeroMagnetic (HRAM) and new techniques that we have recently developed.

## Introduction

For many years we have worked on improving our ability to interpret faults and fractures in the basement and in the sedimentary section using HRAM data. The development of the MaFIC cube (Rhodes and Peirce, 1999) was a major step forward as it allowed depth solutions to be imported into a seismic work station in SEG-Y format and compared directly to the seismic data and interpretation using software that the interpreters already had on their desktops. However, our best magnetic depth determinations were usually based on 2D Werner inversion using many operators of different lengths to resolve different depths. The results contained considerable vertical dispersion and it was difficult to be completely confident about our fault interpretations.

We call our completely new interactive process Enhanced 3D Magnetic Depth Inversion (E3D inversion) because the mathematics of Euler and Werner deconvolution (both of which are inversion processes more than deconvolution processes) can be merged into a unified expression using Hilbert transforms. This work builds upon the large volume of work by Richard Hansen of EDCON-PRJ in Denver, and particularly his development of what he called a 3D Werner algorithm (Hansen, 2005; Hansen and Simmonds, 1993; Hansen and Suci, 2002; Nabighian and Hansen, 2001).

Unfortunately, Richard passed away on Jan. 5, 2008, and this paper is dedicated to him and the rich legacy of ideas and careful thinking that he generously shared with his colleagues.

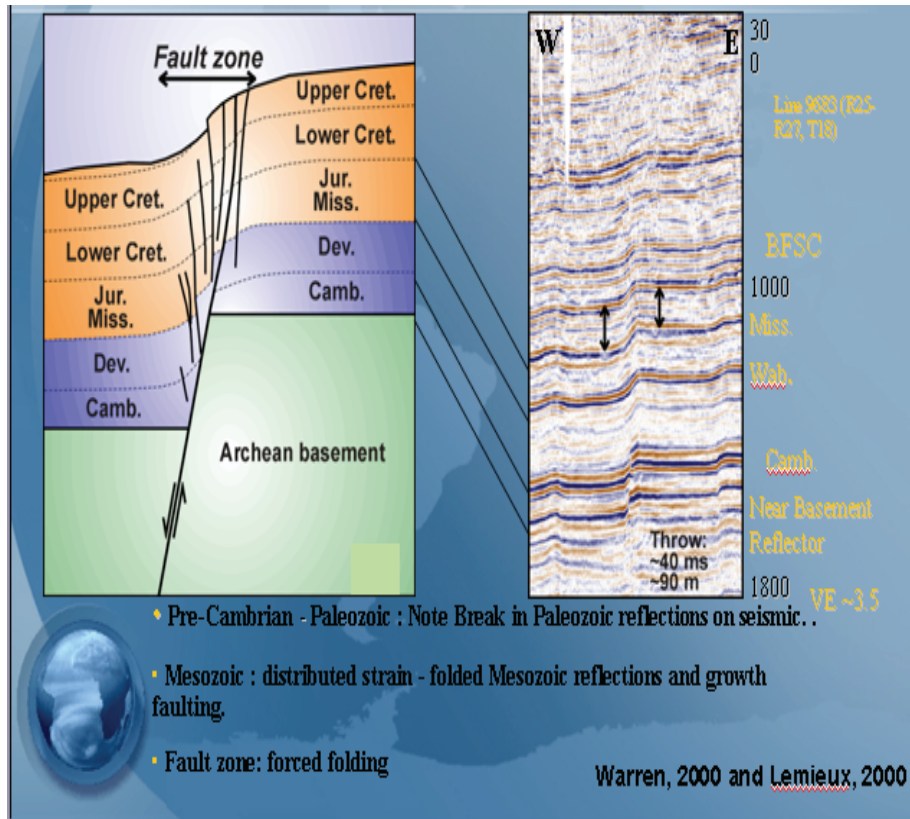


Figure 1: A seismic example of a reactivated fault in southern Alberta (example provided by Marion Warren and Sophie Lemieux of Encana, from Peirce and Griffith, 2004).

## Method

We have implemented the 3D algorithm with multiple sources, added an interactive GUI interface to make it more user friendly, and applied some statistical coherence functions to effectively sort out tightly grouped solutions from mathematical noise. For 2D Werner calculations, we have optimized the matrix inversion to focus on the best defined matrix values first and thereby greatly reduce the mathematical scatter that has plagued us in the past.

## Examples

We have applied this technique to the Bishop model (Flanagan, 2005) which has been used widely in recent years to evaluate magnetic depth inversion techniques. Figure 2 shows a somewhat smoothed model of basement in the Bishop model. The model is based on real topography, buried to the depths shown in Figure 2 beneath non-magnetic sediments, with a simple susceptibility map assigned. There are no faults in the model, only vertical contacts between seven simple magnetic bodies. The forward magnetic field of this model is easily calculated, and the challenge has been to invert the data for the known magnetic basement (Reid, et al., 2005; Hassan et al., 2007).

Figure 3 shows the interpreted basement using our E3D approach, calculated from every 10<sup>th</sup> row and column of the magnetic data of the model. The quality and fidelity of these results as compared to the model depths far exceed anything that we have been able to achieve in the past, both in terms of accuracy and in terms of a wide distribution of solutions that are not restricted just to major fault blocks or lithological contacts.

### Original Bishop Basement Stacked Row-Col 29

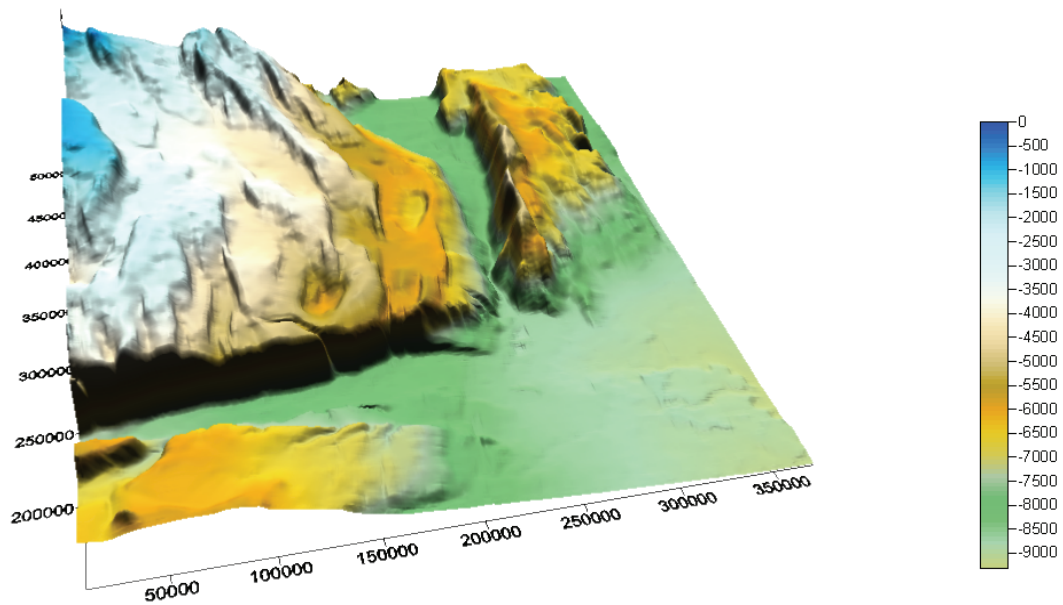


Figure 2: Smoothed Basement of the Bishop model. The model is based on real topography of an area in California, with susceptibilities assigned according to a simple model. The topography has then been transcribed downward to the depths (in m) indicated by the colour bar beneath non-magnetic sediments. There are no basement faults in the model. This image has been smoothed with a 6000 x 6000 m smoothing filter.

### Interpreted Bishop Basement Spacing 10 Row-Cols Stacked Row-Col 29

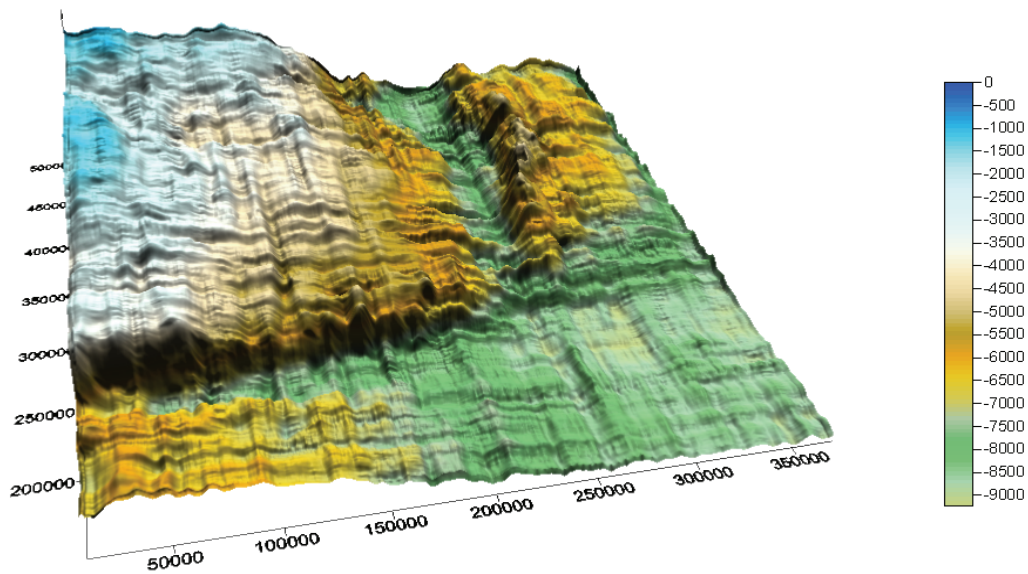


Figure 3: Basement of the Bishop model interpreted on every 10<sup>th</sup> row and column, using Enhanced 3D inversion. Rows and columns are spaced at 200 m, and a 6000 x 6000 m smoothing filter was applied to the final result.

We will also present results from the Peace River Arch in northern Alberta, integrated with existing well data, and demonstrate how much more detail we can now resolve in the basement structure than we could previously. In this case, the difference is particularly dramatic in the SW portion of the area, well south of the Fort St. John graben system, where there is little well control to basement to constrain our earlier interpretation. Furthermore, because the sediments in northern Alberta have significant susceptibilities, we can map faults within the sedimentary section (see Rhodes and Peirce, 1999, for an example of the Hines Creek Fault).

## Conclusions

Understanding how basement structural control influences the overlying section is a critical and undervalued part of the exploration process. Our new approach of E3D inversion offers the chance to develop more complete images of basement than have been possible previously, as well as to image faults within the basement and the sedimentary section more clearly than before. The final result is an attribute cube of magnetic depth solutions that can be compared directly to seismic data on any seismic work station.

## Acknowledgements

This paper is the latest effort at trying to understand the influence of basement on faulting and to map those faults using HRAM data. Many have contributed to this effort over the last ten years. In particular, the algorithm for the 3D Werner approach comes from Richard Hansen. The implementation discussed herein was completed by Dave Caulfield and Randy Kolesar.

## References

- Flanagan, G., 2005, Personal communication, Conoco Phillips.
- Hansen, R.O., 2005, 3D multiple-source Werner deconvolution: *Geophysics*, 70, L45-L51.
- Hansen, R. and Simmonds, M., 1993, Multiple-source Werner deconvolution: *Geophysics*, 58, 1792-1800.
- Hansen, R. and Suci, L., 2002, Multiple-source Euler deconvolution: *Geophysics*, 67, 525-535.
- Hassan, H. H., Charters, R. A., Peirce, J. W., 2007, Mapping Depth to Basement using 2D Werner Inversion of High-Resolution AeroMagnetic (HRAM) Data: poster at 2007 CSPG-CSEG Convention.
- Nabighian, M.N., and Hansen, R.O., 2001, Unification of Werner and Euler deconvolution in three dimensions via the generalized Hilbert transform: *Geophysics*, 66, 365-374.
- Peirce, J.W., and Griffith, L., 2004, Keep an eye on your basement! It is the foundation of the overlying stratigraphy and structure: I.C.E. 2004 CSPG/CHOA/CWLS Joint Conference.
- Reid, A., Fitzgerald, D., and Flanagan, G., 2005, Hybrid Euler magnetic basement depth estimation – Bishop 3D tests: SEG expanded abstracts, 24, 671-673.
- Rhodes, J., and Peirce, J., 1999, MaFIC – Magnetic interpretation in 3D using a seismic workstation: SEG Expanded abstracts, 18, 335-338.