

PS Constraints on Intraplate Mountain Building Stages in Central Patagonia Determined From the Analysis of 2-D and 3-D Seismic and Borehole Data: San Bernardo Fold and Thrust Belt*

Facundo Pagan¹, Guido Gianni², Andres Echaurren², Cesar Navarrete³, Andres Folgueras², Octavian Catuneanu⁴, and Alfonso Encinas⁵

Search and Discovery Article #30648 (2020)**
Posted January 20, 2020

*Adapted from poster presentation given at 2019 International Conference and Exhibition, Buenos Aires, Argentina, August 27-30, 2019

**Datapages © 2020 Serial rights given by author. For all other rights contact author directly. DOI:10.1306/30648Pagan2020

¹Exploration Department, YPF S.A., Buenos Aires, Argentina (facundo.j.pagan@ypf.com)

²Universidad de Buenos Aires, Buenos Aires, Argentina

³Universidad San Juan Bosco, Chubut, Argentina

⁴University of Alberta, Edmonton, Canada

⁵Universidad de Concepción, Concepción, Chile

Abstract

Intraplate belts are considered among the most enigmatic features in plate tectonic theory. Their origin remains not completely understood as well as their episodic character, usually concentrating long lasting uplift and deformational activity. In this work we analyze borehole, 2D and 3D seismic data in an intraplate belt crossing the Patagonian region with the aim of revealing its multi-episodic character. Seismic data tied to borehole and surface data show internal unconformities affecting synrift deposits of the Neocomian and lower D-129 Formation associated with initial stages of the Pangea break up. Above these erosional features a first canyon incision and important thickness variations characterize the upper D-129 Formation and the Matasiete Formation in association with contractional structures and strike slip faults, interpreted as synorogenic strata. Then an erosive unconformity separates Cretaceous from Paleogene strata, being these in turn incised by deep canyon features. Horizons slices performed at different time intervals allow deciphering variable sediment supply and structural control, through the identification of distributary fluvial and deltaic morphologies, with a nearly constant source in the northwest.

These features indicate that the San Bernardo fold and thrust belt uplifted and structured through the Late Early Cretaceous times through isolated uplifts in a context of highly oblique convergence, and Late Cretaceous to the Cenozoic in a context of more orthogonal convergence, showing that Central Patagonia has absorbed variable amounts of shortening and strike slip deformation, which constitutes valuable information for biota and paleogeographic reconstructions as well as for oil exploration.

References Cited

Catuneanu, O., 2019, Scale in Sequence Stratigraphy: Marine and Petroleum Geology, v. 106, p. 128-159.

Echaurren, A., A. Folguera, G.M. Gianni, D.L. Orts, A. Tassara, A. Encinas, M.E. Giménez, and V.A. Valencia, 2016, Tectonic Evolution of the North Patagonian Andes (41-44°S) Through Recognition of Syntectonic Strata: Tectonophysics, v. 677-678, p.99-114. [dio.10.1016/j.tecto.2016.04.009](https://doi.org/10.1016/j.tecto.2016.04.009)

Folguera, A., A. Encinas, A. Echaurren, G. Gianni, D. Orts, V. Valencia, and G. Carrasco, 2018, Constraints on the Neogene Growth of the Central Patagonian Andes at the Latitude of the Chile Triple Junction (45-47°S) Using U/Pb Geochronology in Synorogenic Strata: Tectonophysics, v. 744, p. 134-154. doi.org/10.1016/j.tecto.2018.06.011

Gianni, G.M., A. Echaurren, A. Folguera, J. Likerman, A. Encinas, H.P.A. García, C.N.D. Molin, and V.A. Valencia, 2017, Cenozoic Intraplate Tectonics in Central Patagonia: Record of Main Andean Phases in a Weak Upper Plate: Tectonophysics, v. 721, p. 155-166. [dio.10.1016/j.tecto.2017.10.005](https://doi.org/10.1016/j.tecto.2017.10.005)

Gianni, G.M., C. Navarrete, A. Folguera, and J. Bosco, 2015, Synorogenic Foreland Rifts and Transtensional Basins: A Review of Andean Imprints on the Evolution of the San Jorge Gulf, Salta Group and Taubaté Basins: Journal of South American Earth Sciences, v. 64, p. 288-306. [dio.10.1016/j.jsames.2015.08.004](https://doi.org/10.1016/j.jsames.2015.08.004)

Gianni, G.M., C. Navarrete, D.L. Orts, J.E. Tobal, A. Folguera, and M.E. Giménez, 2015, Patagonian Broken Foreland and Related Synorogenic Rifting: The Origin of the Chubut Group Basin: Tectonophysics, v. 649, p. 81-99. [dio.10.1016/j.tecto.2015.03.006](https://doi.org/10.1016/j.tecto.2015.03.006)

Giampaoli, P., and E.R. Vera, 2018, Fold Growth and Lateral Linkage in the Southern Sub-Andean Fold-and-Thrust Belt of Argentina and Bolivia, *in* G. Zamora, K.R. McClay, and V.A. Ramos (eds.), Petroleum Basins and Hydrocarbon Potential of the Andes of Peru and Bolivia: American Association of Petroleum Geologists Memoir 117, p. 543-564.

Navarrete, C.R., G.M. Gianni, and A. Folguera, 2015, Tectonic Inversion Events in the Western San Jorge Gulf Basin from Seismic, Borehole and Field Data: Journal of South American Earth Sciences, v. 64, p. 486-497. [dio.10.1016/j.jsames.2015.09.012](https://doi.org/10.1016/j.jsames.2015.09.012)

Müller, D.R., M. Seton, S. Zahirovic, S.E. Williams, K.J. Matthews, N.M. Wright, G.E. Shephard, K.T. Maloney, N. Barnett-Moore, M. Hoseinpour, D.J. Bower, and J. Cannon, 2016, Ocean Basin Evolution and Global-Scale Plate Reorganization Events Since Pangea Breakup: The Annual Review of Earth and Planetary Sciences, v. 44, p. 107-138.

Pagán, F.J., and V.C. Martinez, and O. Catuneanu, 2017, Stratigraphic Traps in a Structurally Controlled Setting - The Neocomian of the Golfo San Jorge Basin, Argentina: 79th EAGE Conference and Exhibition, Paris, France 12-15 June 2017, v. 7, p. 4844-4848.

Constraints on intraplate mountain building stages in central Patagonia determined from the analysis of 2-D and 3-D seismic and borehole data: San Bernardo Fold and Thrust Belt

F. Pagán¹, G. Gianni², A. Echaurren², C. Navarrete², A. Folgueras², O. Catuneanu³, A. Encinas⁴.

1 Exploration Department YPF S.A., Buenos Aires, Argentina; 2 Universidad de Buenos Aires, Buenos Aires, Argentina; 2 Universidad San Juan Bosco, Chubut, Argentina; 3 University of Alberta, Edmonton, Canada; 4 Universidad de Concepción, Concepción, Chile.

INTRODUCTION AND AIM

✓ Intraplate belts are considered among the most enigmatic features in plate tectonic theory. Their origin remains not completely understood as well as their episodic character, usually concentrating long lasting uplift and deformational activity. In this work we analyze borehole and 2D and 3D seismic data in an intraplate belt crossing Patagonian region with the aim of revealing its multi-episodic character.

BACKGROUND

✓ Intraplate mountain belts around the world intrigue scientists about their development and occurrence. These show generally a polyphase character since they are usually linked to longstanding intraplate weaknesses that can be determined from synorogenic strata and thermochronological data (Gianni et al., 2017). The Andes are locally associated with intraplate mountain belts separated from the orogenic wedge and interrupting the flat morphology that characterizes the foreland zone. That is the case on northern Patagonia, where the typical flat-lying topography of the foreland zone is interrupted by a prominent relief that exposes Mesozoic to Cenozoic rocks in the San Bernardo fold and thrust belt, a major intraplate belt crossing Patagonia.

✓ Even though this intraplate deformation has been analyzed from different perspectives determining contrasting uplift stages during the last decades, in the last years considerable understanding has resulted regarding timing and orogenic mechanisms from extensive work focused on the San Bernardo fold and thrust belt (Gianni et al., 2015; Navarrete et al., 2015; Echaurren et al., 2016). This belt is interpreted as related to the tectonic inversion of Early to Mid Jurassic extensional structures in successive contractional and transpressional stages spanning from the late Early Cretaceous to the Neogene (Gianni et al., 2017; Navarrete et al., 2017). Its uplift has constituted itself in a mountain system morphologically independent from the Andean orogenic wedge to the west. Therefore this system has compartmentalized Patagonia in two sectors with implications in biota evolution and climate (Folguera et al., 2017).

✓ The first orogenic event is thought to have happened in late Early Cretaceous times and was responsible for constituting an orographic barrier that limited the westward Atlantic sea advance of the Maastrichtian-Danian transgression that affected vast sectors of northernmost Patagonia (Navarrete et al., 2015; Gianni et al., 2015). After this transgression Eocene contractional reactivations are inferred on the basis of identification of synorogenic strata of the Río Chico Formation (Gianni et al., 2017). A Neogene contractional component is determined from the deformation of Miocene strata that flank the main folds that constitute this belt (Gianni et al., 2015).

METHODOLOGY

✓ During the last years, from numerous exploratory drilled projects on the west flank of the Golfo San Jorge Basin, it was possible to verify observations made on the timing of the structure of the folded belt in different locations. For this, more than 500 km of 2D lines and 5000 km2 of 3D seismic, of different acquisition and reprocessing campaigns were used. We also analyzed more than 100 key wells for the seismic tying of the stratigraphy. Synthetic attributes, sequence stratigraphy and seismic geomorphology were the main methods used to interpret stacking patterns and their lateral variations at different scales of resolution, vertical and horizontal.

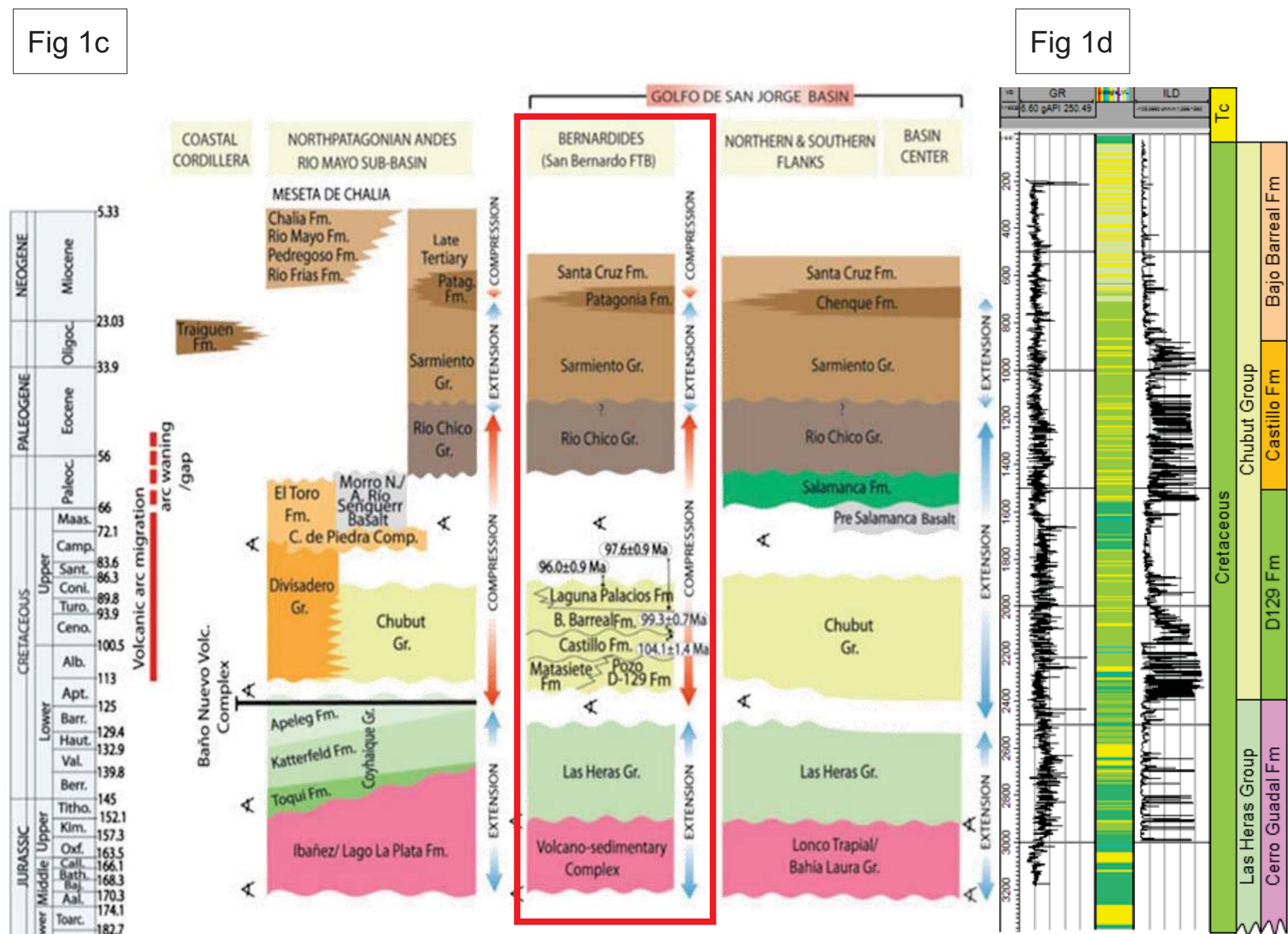
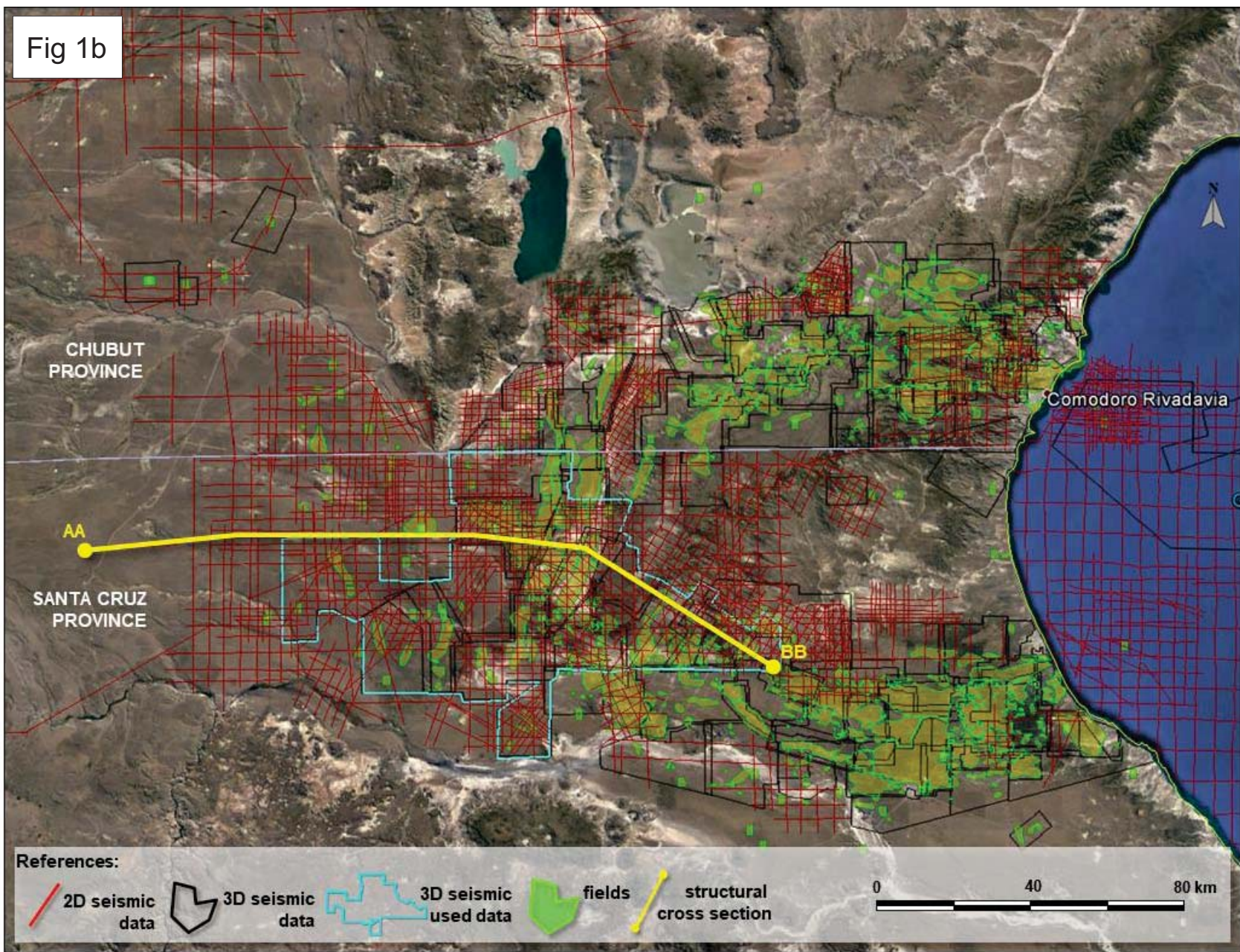
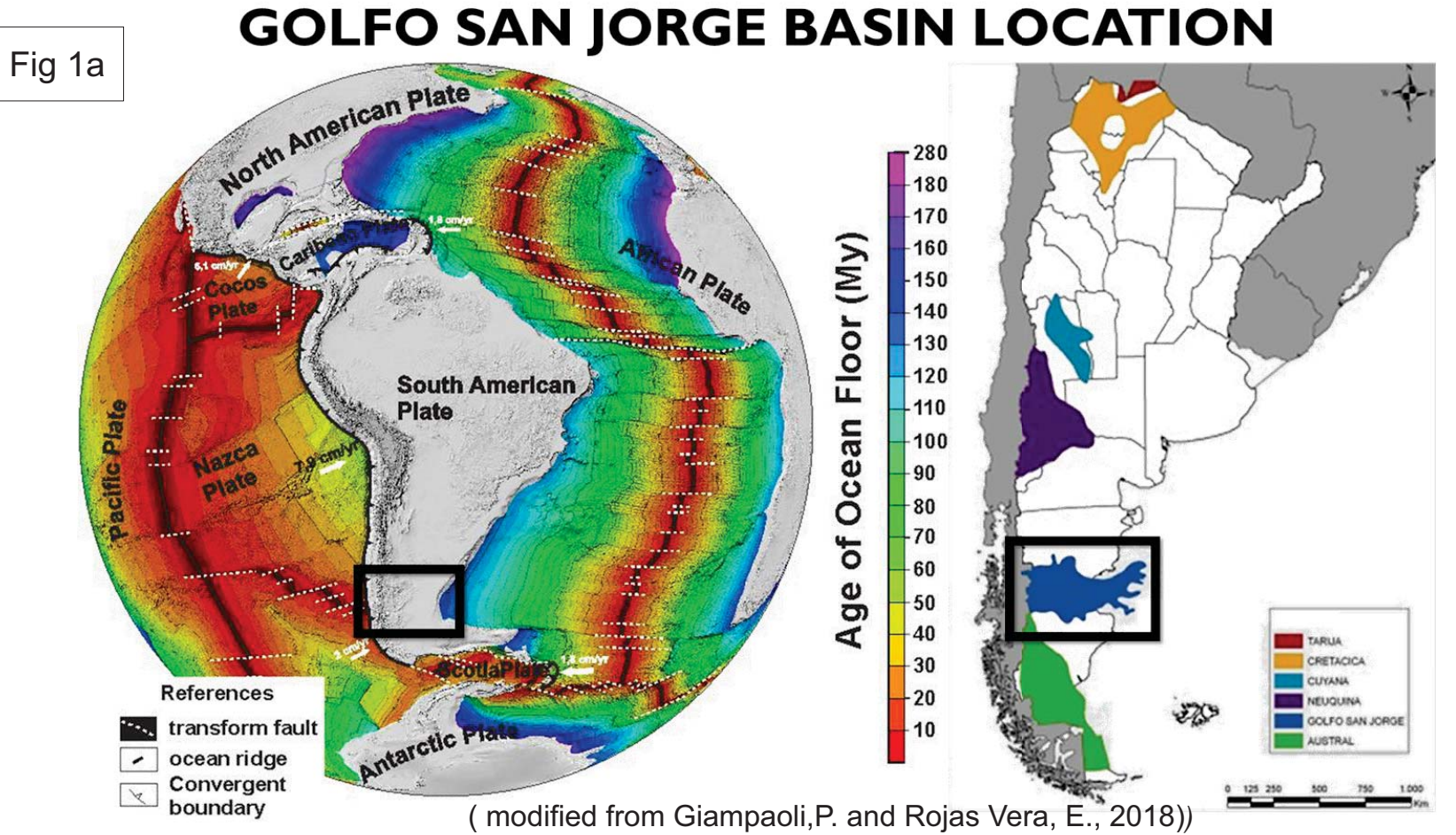
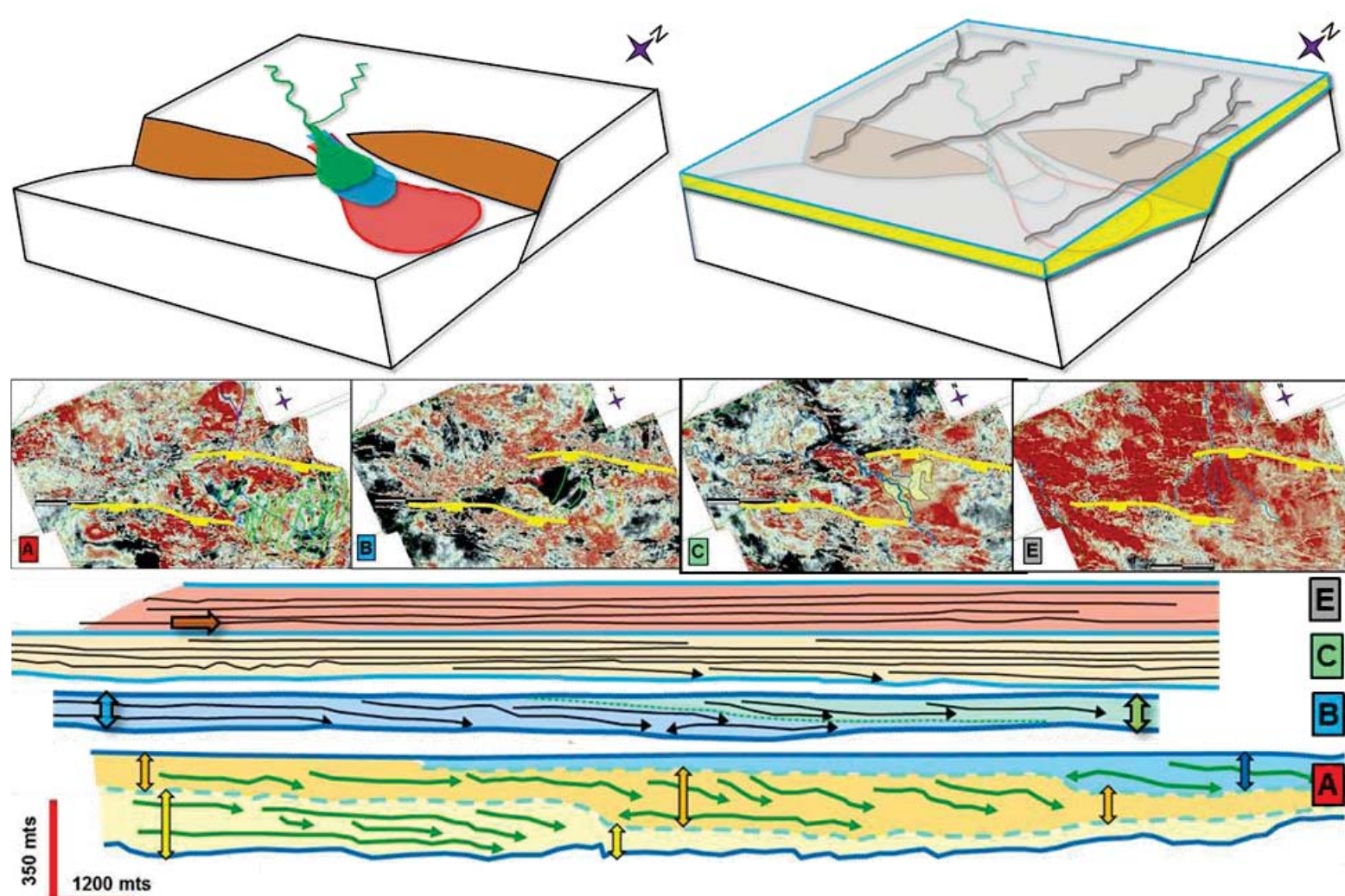
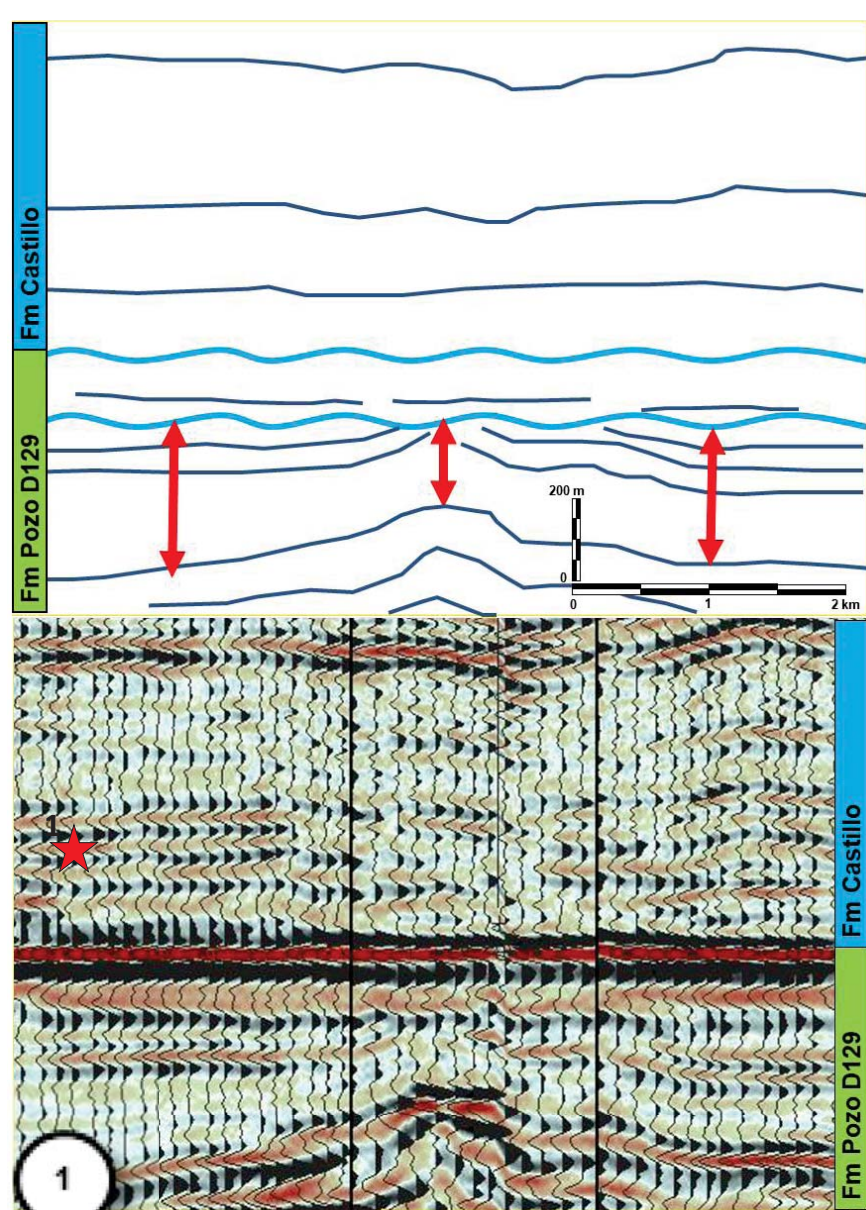
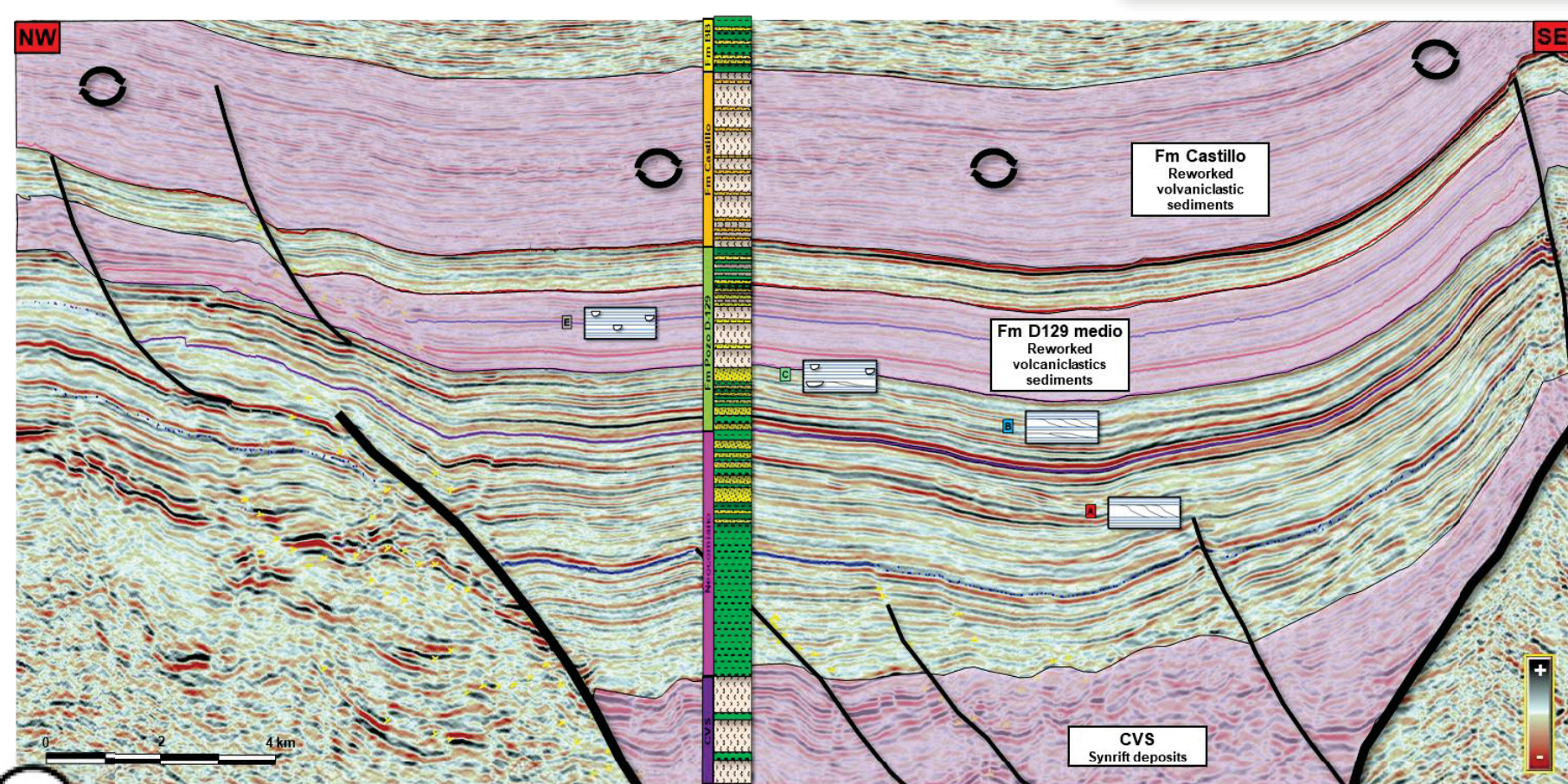


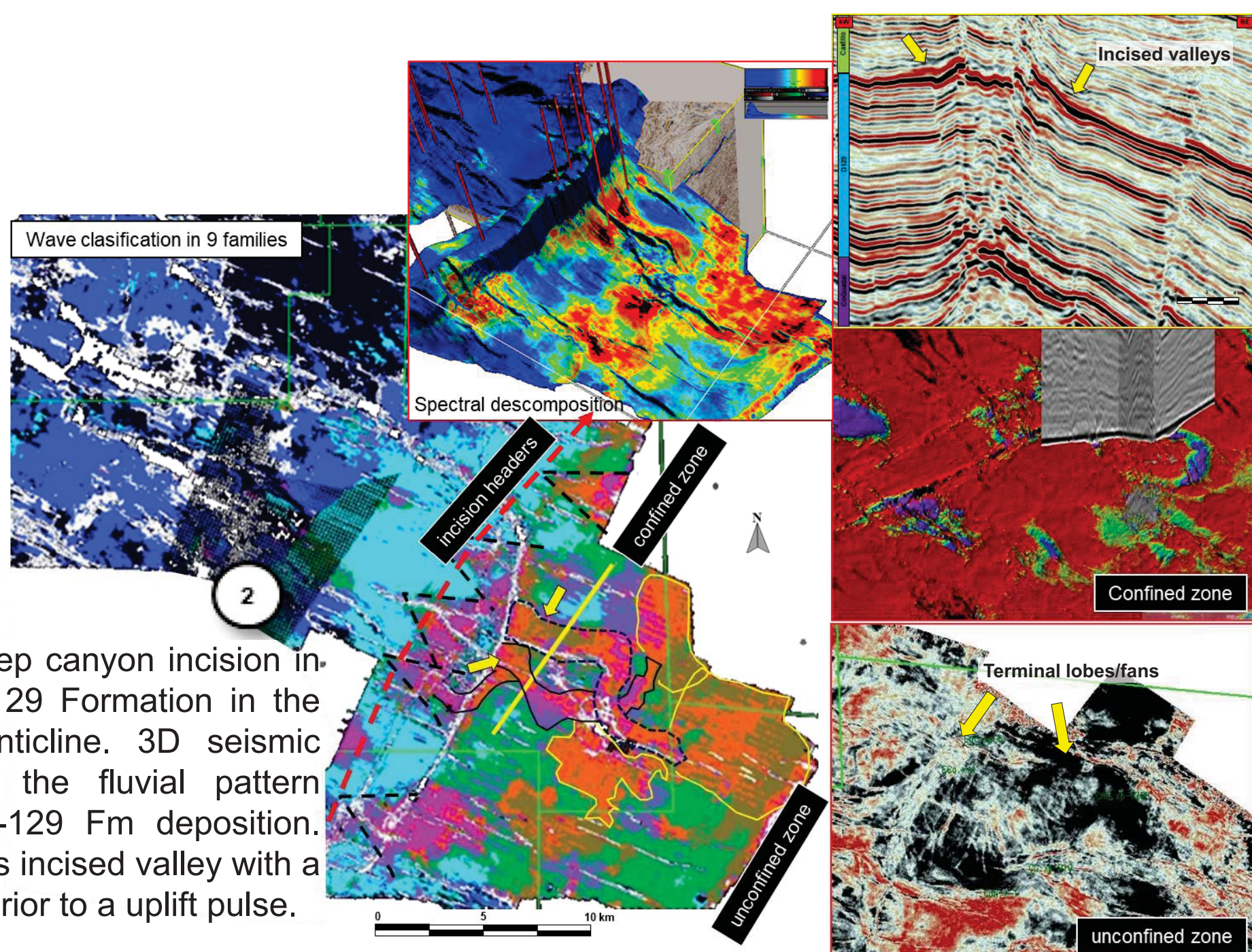
Figure 1a. Location map of the Golfo San Jorge Basin. 1b. Available data and structural cross section. 1c. Stratigraphic chart of the Golfo San Jorge Basin. (modified from Gianni et al., 2015). 1d Log type.



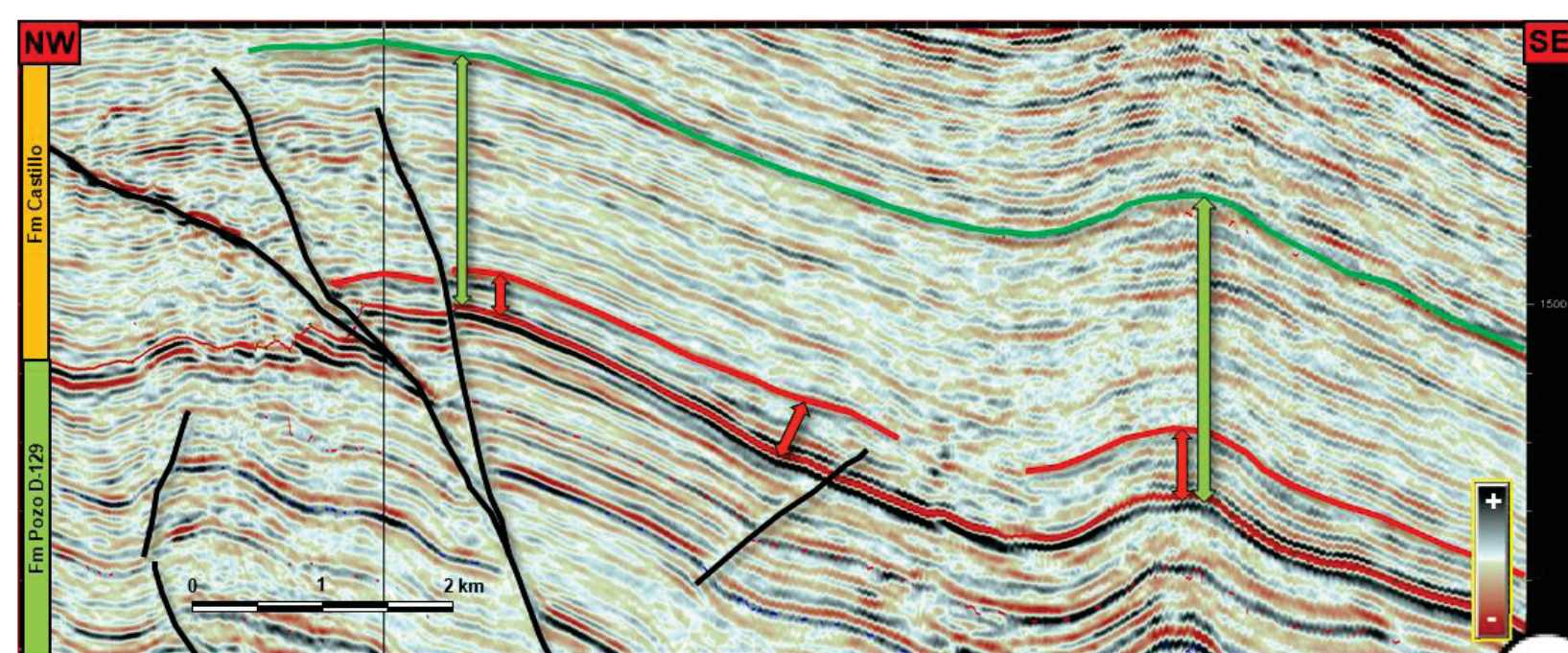
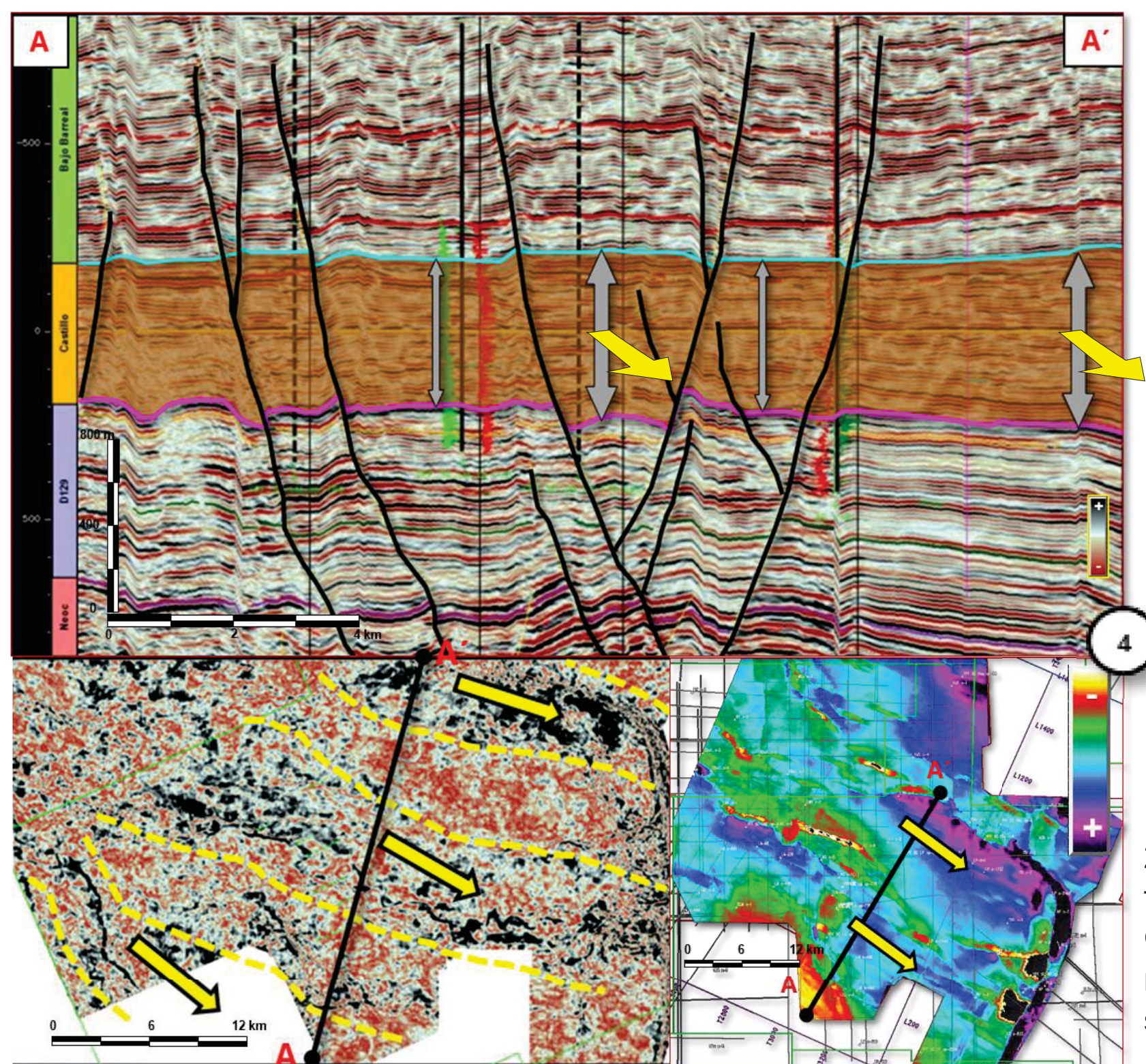
Extensional control exerted on Mid Jurassic depocenters of the Lonco Trapial Formation and lacustrine Neocomian units in the western limb of the Perales anticline. Deltaic lobes of ~100 km² interpreted for the Neocomian sequences with a SE-directed distribution pattern. Interpretation of fluvial and deltaic patterns for the lower D-129 Formation that shows a strong control on extensional topography, similar to the underlying Neocomian sections. Extensional relay faults control fluvial and delta trajectory visualized from a horizon slice on 3D seismic information. Interpretation of fluvial patterns for the upper D-129 Formation that shows no control on previous extensional topography that controlled the lower D-129 Formation section. Note that this fluvial pattern is south-directed which contrasts with the lower pattern that is SE directed. (Pagan et al, 2017).



Erosive-angular unconformities in the forelimb of the Perales anticline affecting the upper D-129 Formation. This were interpreted as a product of local reactivations associated with compressive events.

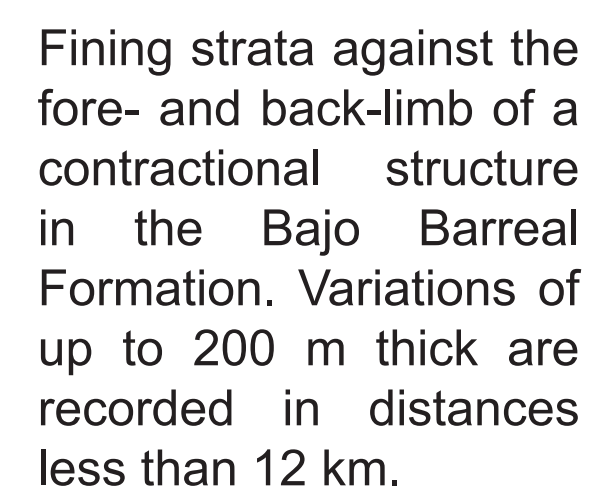


Evidence of up to 100 m deep canyon incision in the upper section of the D129 Formation in the forelimb of the Perales anticline. 3D seismic horizon slice reveals that the fluvial pattern drained to the SE after D-129 Fm deposition. Geoforms were interpreted as incised valley with a high degree of confinement prior to a uplift pulse.



Lower Castillo Formation showing evidence of strata fining against the limbs of a compressive structure.

In the mid section of the Castillo Formation thickness variations up to 200 m are associated with strike-slip faults. Thickness anomalies are the product of channels belts with low amalgamation (LAST, Catuneanu, O., 2019) of layers (or high accommodation) and high ratio of flooding fine sediments vs channels (multi-historic channels systems).



Regional angular unconformity (2-3°) between the upper Chubut Group and the Paleogene sections showing the mild rotation of the backlimb of the Aguada Bandera anticline after the Cretaceous and probably into the Paleogene.

