

PS Searching for Sweet Spots: Multi-Facies and Multi-Scale Approach for Gas Shale Reservoir Characterization*

Alessandro Avanzini¹, Piero Balossino¹, Marco Brignoli¹, Elisa Spelta¹, and Cristiano Tarchiani¹

Search and Discovery Article #42243 (2018)**

Posted July 23, 2018

*Adapted from poster presentation given at 2018 AAPG Annual Convention & Exhibition, Salt Lake City, Utah, May 20-23, 2018

**Datapages © 2018 Serial rights given by author. For all other rights contact author directly.

¹Eni S.p.A., San Donato Milanese, Milan, Italy (alessandro.avanzini@eni.com)

Abstract

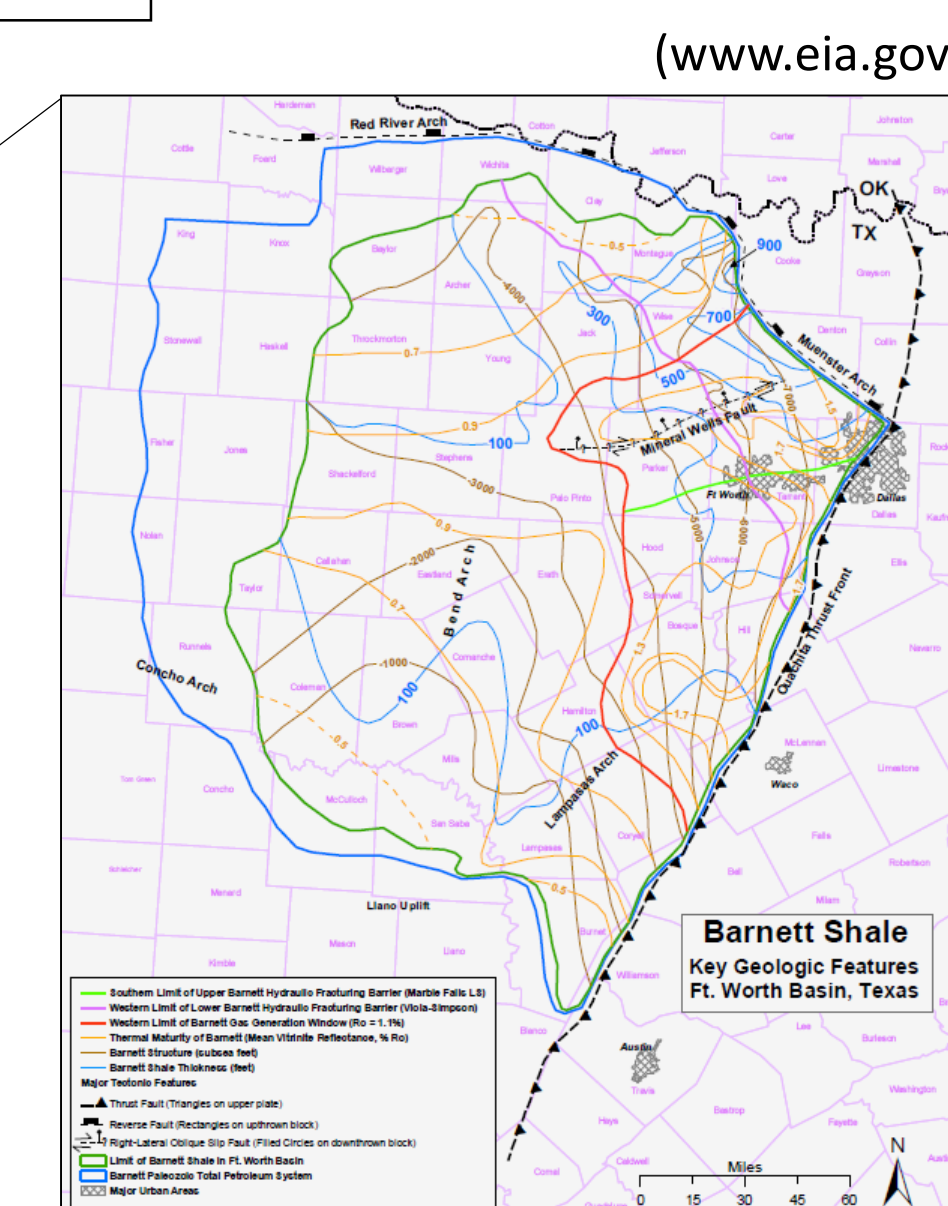
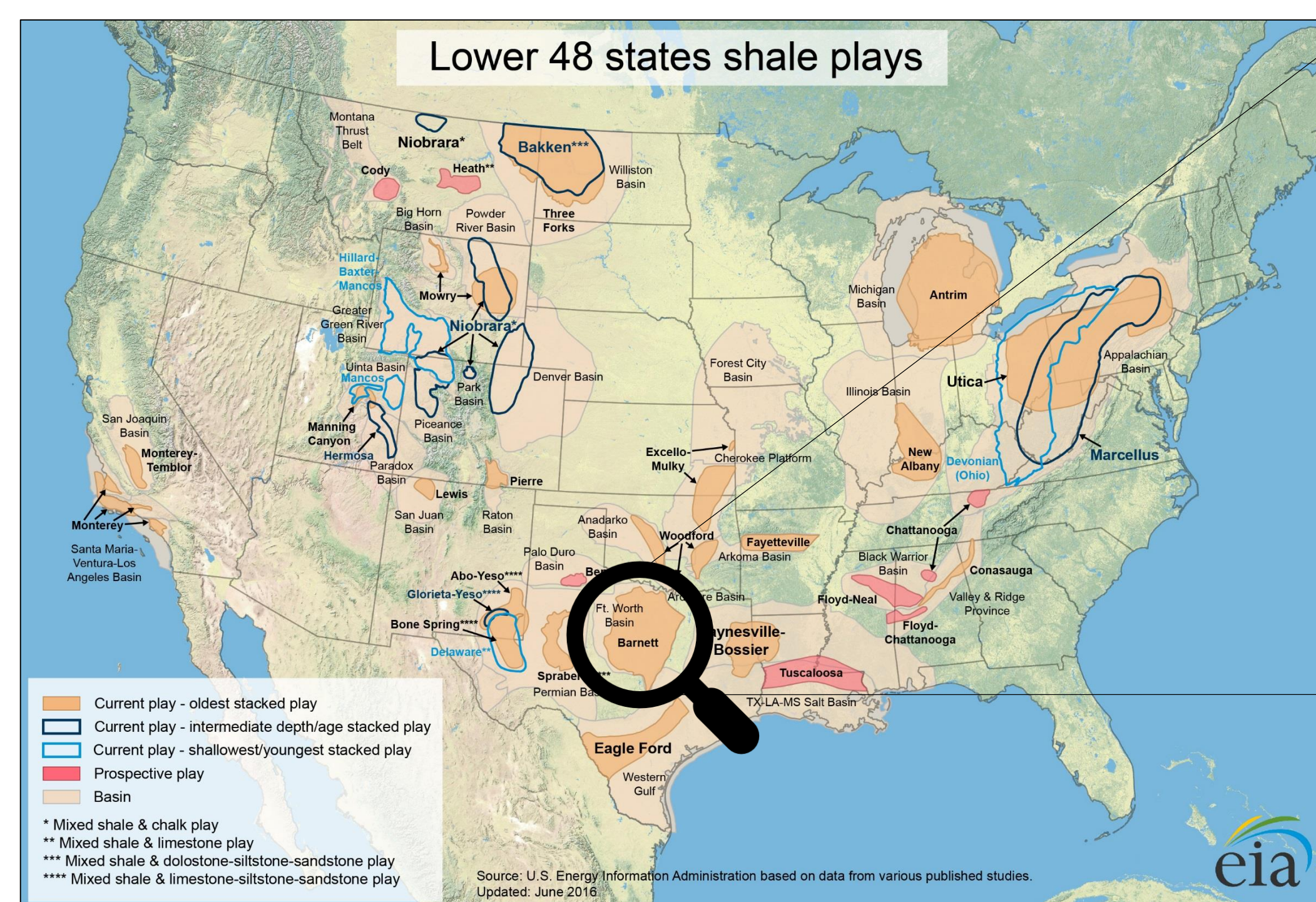
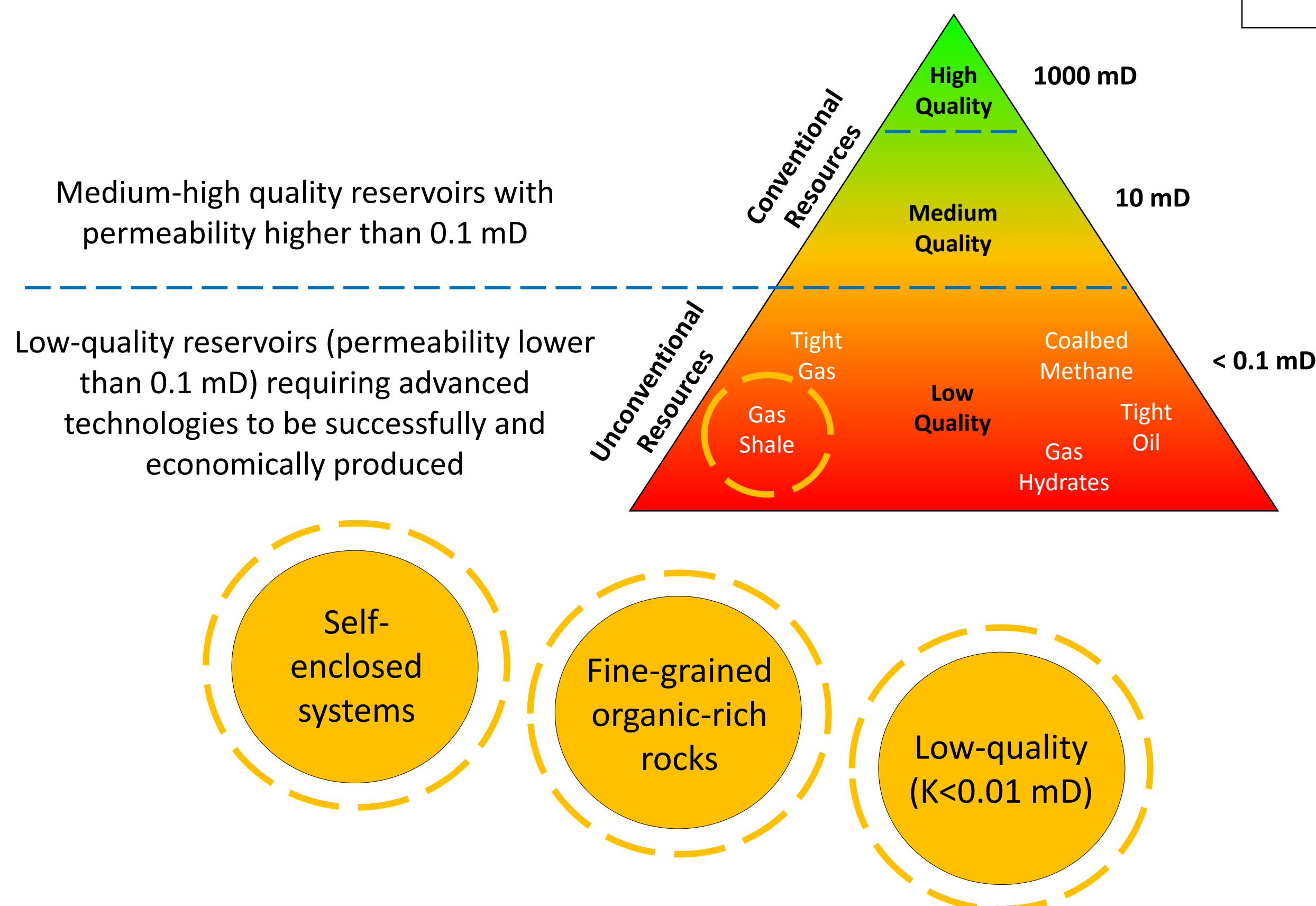
Unconventional reservoirs represent a challenge in terms of production. In fact, they need advanced techniques such as horizontal well placement and hydraulic fracturing to be successfully exploited at economic rates. This work introduces the concepts of *static* and *dynamic* reservoir quality (RQ). Static RQ, related to formation storage, refers to a set of petrophysical parameters that characterize formation attitude to the development. Dynamic RQ refers to producibility and comprises a set of geomechanical parameters describing rock capability to be fractured; the term *dynamic* RQ is used in place of the more used *completion quality* and it differs from the latter because it does not consider the *in situ* stress data. The different features defined by static and dynamic RQs allow to recognize the “so called” productive sweet spots. In particular, productive sweet spots correspond to those intervals with good static and dynamic RQs.

The workflow developed in this study is focused on the identification of producible intervals in unconventional reservoirs by means of lithologic and geomechanical facies classification. A set of lithologic facies is initially created by applying a clustering technique on core data; those lithologic facies are then extended to the logged interval and characterized in terms of static RQ. The same approach has been adopted to describe geomechanical facies. In this work, Young’s modulus is directly used as brittleness indicator to characterize geomechanical facies for dynamic RQ description. Sweet spot identification is the outcome of the integration of the static RQ and the dynamic RQ. The workflow is applied to the Barnett Shale Formation; the logged interval is classified with four lithologic facies (LF) and five geomechanical facies (GF). The best interval in terms of static and dynamic RQs is identified in the upper and middle sections of the Lower Barnett, defining the productive sweet spot. At the end, LF and GF are linked to seismic facies probability volumes and Young’s modulus derived from elastic inversion of surface seismic. Seismic-driven geostatistical realization of LF and GF leads to estimate of static and dynamic RQs volumes that, in turn, are combined into volumes of productive and non-productive facies. This methodology represents an early step in the building of reliable and predictive models for gas shale with positive impact on productive sweet spot location, asset production and overall value.

Searching for Sweet Spot: Multi-Facies and Multi-Scale Approach for Gas Shale Reservoir Characterization

Alessandro Avanzini*, Piero Balossino*, Marco Brignoli*, Elisa Spelta*, Cristiano Tarchiani*
*Eni SpA, San Donato Milanese (Milan), Italy

Introduction: the Barnett Shale formation

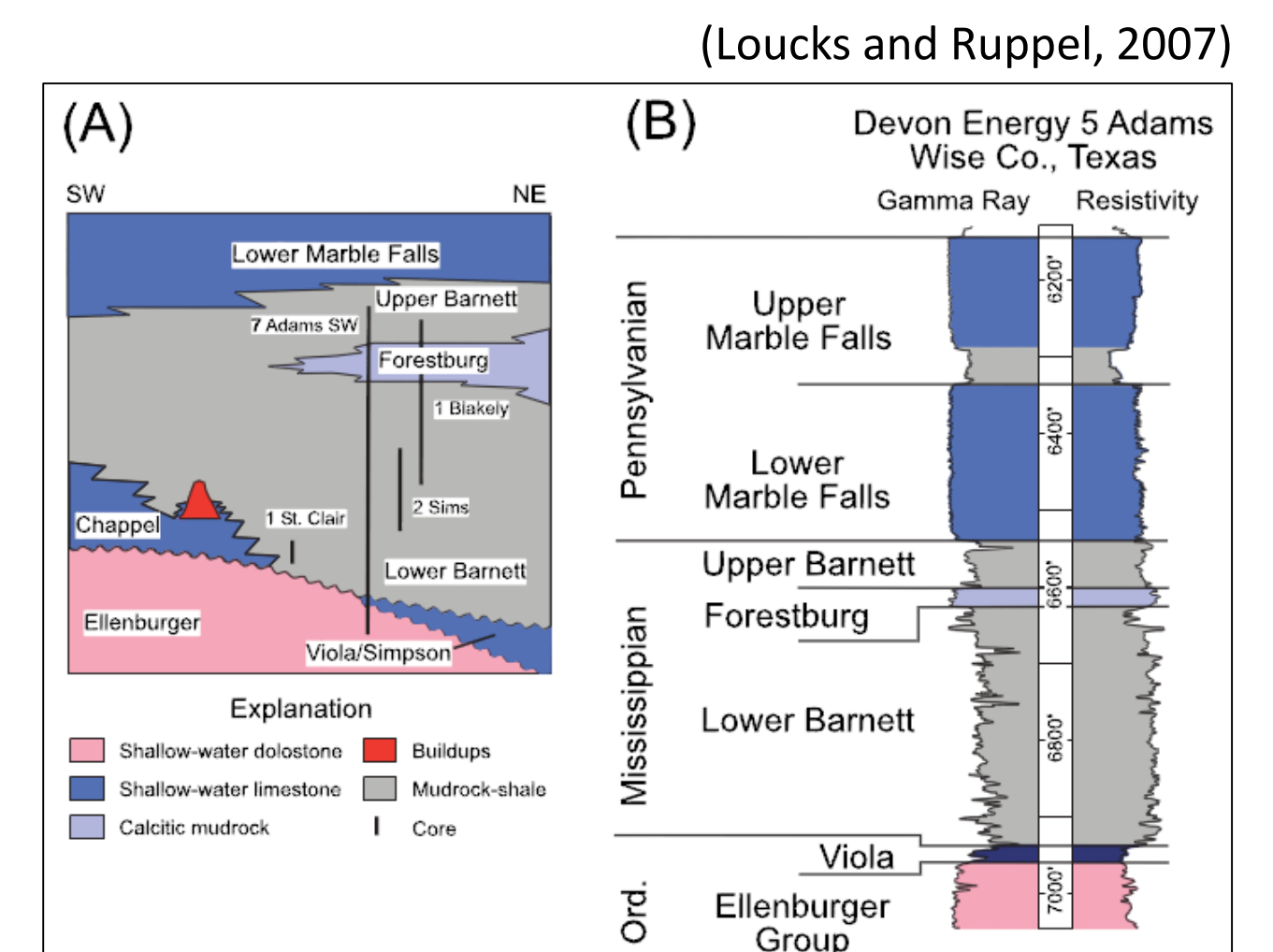


Barnett Shale formation:

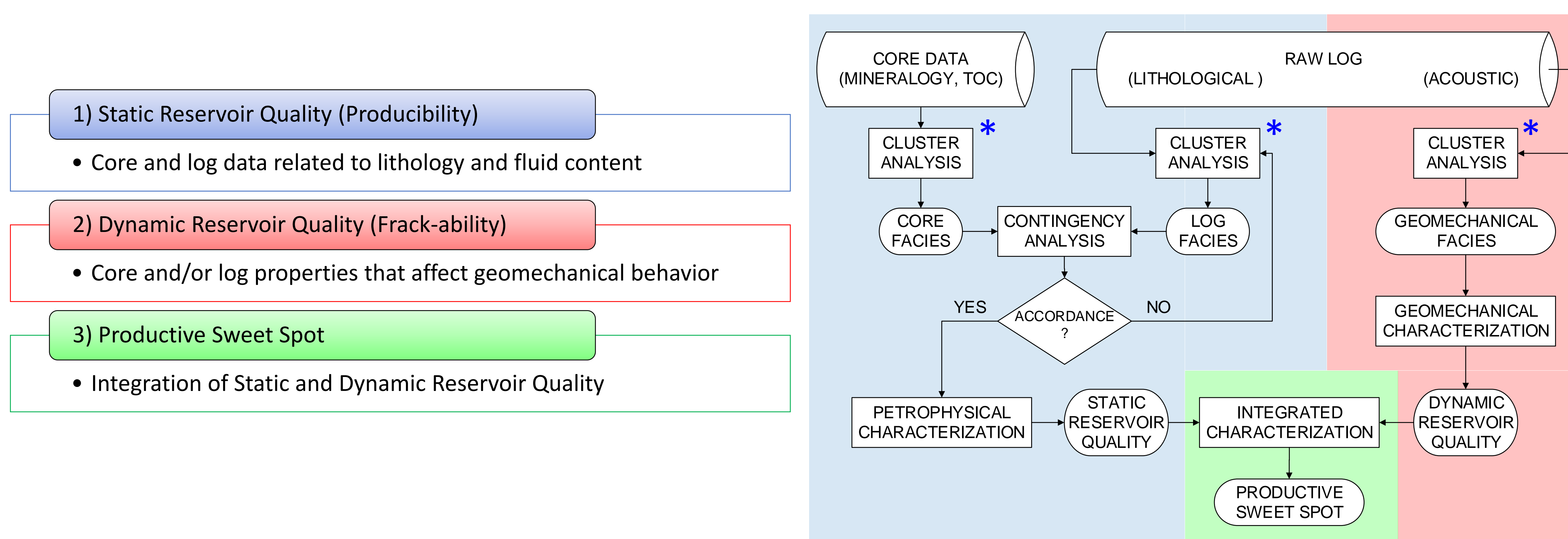
- Location: Fort Worth Basin (Texas)
- Age: Mississippian
- Area/Thickness: 5000 mi²/100 ft ÷ 600 ft

Reservoir properties:

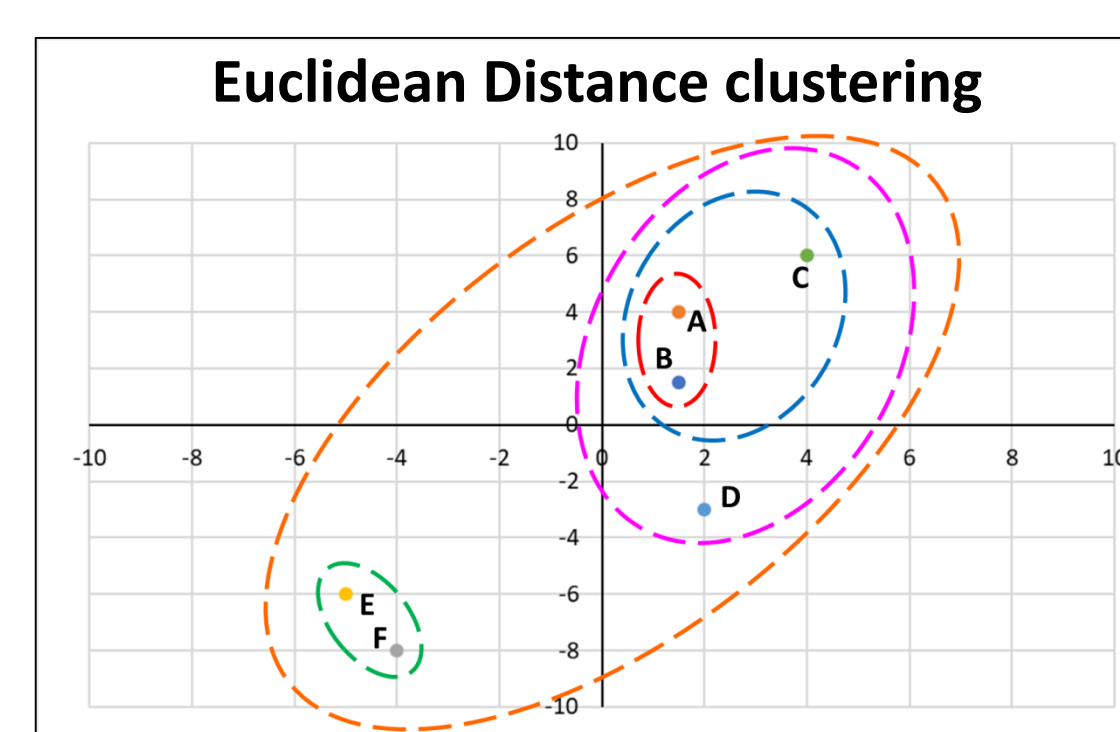
- Porosity: 4% ÷ 10%
- Permeability: 10⁻⁴ mD ÷ 10⁻³ mD
- Organic content (TOC): 2% ÷ 7%
- GIIP: 50 ÷ 200 bcf/mi²



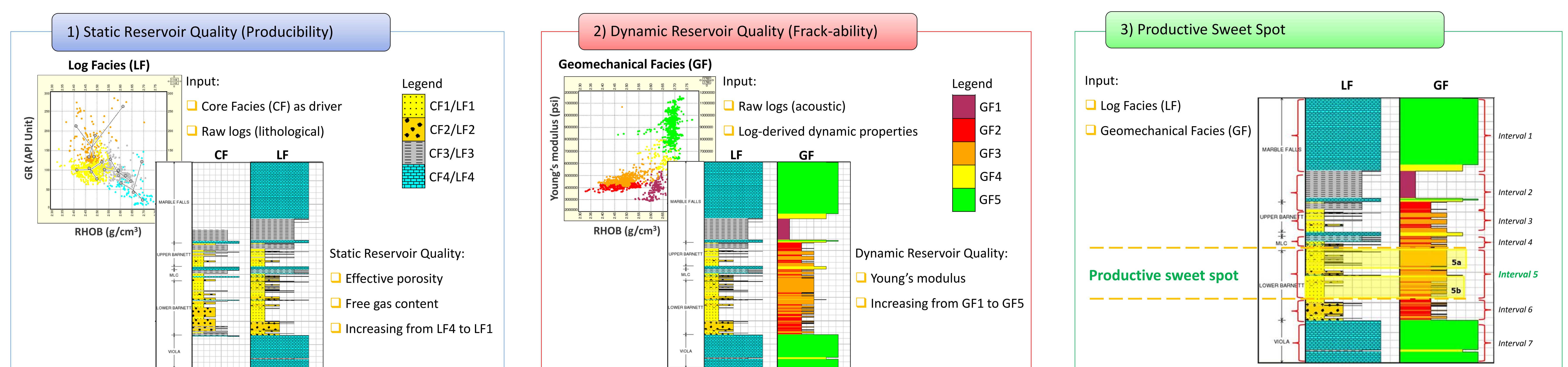
Methodology: a three-step workflow



- Statistical method that looks for similarity/dissimilarity between data points in order to group them into classes
- Euclidean Distance as a measure of dissimilarity
- Three main phases:
 - Classification (Ward's hierarchical method)
 - Discrimination (K-means clustering)
 - Verification (Contingency analysis)



Application: searching for sweet spot



Improvement: from log to seismic-driven model

