

Architecture and Connectivity of Coal-Bearing Reservoirs: New Insights From Outcrop Analogues*

Andrea Moscariello¹, Dario Ventra², Aymeric Le Cottonnec², and Eric Braccini³

Search and Discovery Article #51137 (2015)**

Posted September 14, 2015

*Adapted from oral presentation given at AAPG Annual Convention & Exhibition, Denver, Colorado, May 31-June 3, 2015

**Datapages © 2015 Serial rights given by author. For all other rights contact author directly.

¹Earth and Environmental Sciences, University of Geneva, CH-1205 Geneva, Switzerland (andrea.moscariello@unige.ch)

²Earth and Environmental Sciences, University of Geneva, CH-1205 Geneva, Switzerland

³TOTAL SA, Pau, France

Abstract

Predictive model for coal-bearing fluvio-deltaic successions in the subsurface are required to drive the effective and cost efficient hydrocarbon development of both unconventional coal-bed methane and conventional reservoir projects. The Eastern Kentucky and West Virginia road network provide world-class exposures of Upper Carboniferous coal bearing successions where the interplay between sand and shale intervals and intervening coals can be studied in detail. In this paper we present a summary of ongoing research recently carried out on the Pennsylvanian Hyden and Pikeville Formations where architecture and lateral facies variability can be observed and followed for several kilometers thanks to exceptional outcrop quality and dense borehole data from coal mining operations. Coals, usually genetically associated with transgressive system tract, lies often on top of channel-fill sandstone and under shale dominated intervals the latter recording the transition from a flooded coastal plain to shallow to deep marine environment. However coals are found as well draping irregular topographic surfaces where wide and relatively deep (10–20 m) incisions can be recognized. In this situation coals are typically overlain by channel fill sandstone forming the stratigraphical unit above. In this case, the coals are interpreted as forming during a low stand phase and thus possibly the true indicators of development of incised valleys. Five to ten meters-high inclined beds made of mixed heterolithic successions of sandstones and shales are associated with both fluvial-dominated mouth bars and point-bars develop in large meandering river systems often developed within estuarine environment. This study highlights the typical 3D features of these deposits allowing the definition of sedimentological and stratigraphical criteria to distinguish these two systems in the subsurface. The Carboniferous succession of Eastern Kentucky is compared with the coeval succession in the North Sea (The

Netherlands) to highlight the importance of outcrop based analogues studies to help understanding the overall distribution of subsurface geology by providing practical criteria for a) carrying out a well-to-well correlation and b) reconstruct the overall 3D reservoir architecture.

Selected References

Blakey, R., 2014, Upper Carboniferous Paleographic Map: Colorado Plateau Geosystems, Arizona, USA.

Chesnut, D.R., 1993, Euastatic and Tectonic Control of Sedimentation of the Pennsylvanian Strata of the Central Appalachian Basin, USA: Compte Rendu, Douzieme Congres International de la Stratigraphie et Geologie du Carbonifere et Permien (Buenos Aires, 1991), p. 421–460.

Thomas, L., 2002, Coal Geology, John Wiley and Sons, New York, 384 p.

Walker, S., 2000, Major Coalfields of the World: CCC/32, IEA Coal Research, London, United Kingdom, 131 p.



**UNIVERSITÉ
DE GENÈVE**

FACULTÉ DES SCIENCES

Earth and Environmental Sciences

Architecture and Connectivity of Coal-Bearing Reservoirs: New Insights From Outcrop Analogues

A. Moscariello ¹, D. Ventra¹, A. Le Cottonnec¹, E. Braccini ²

¹ Earth and environmental sciences, University of Geneva, CH-1205 Geneva, Switzerland

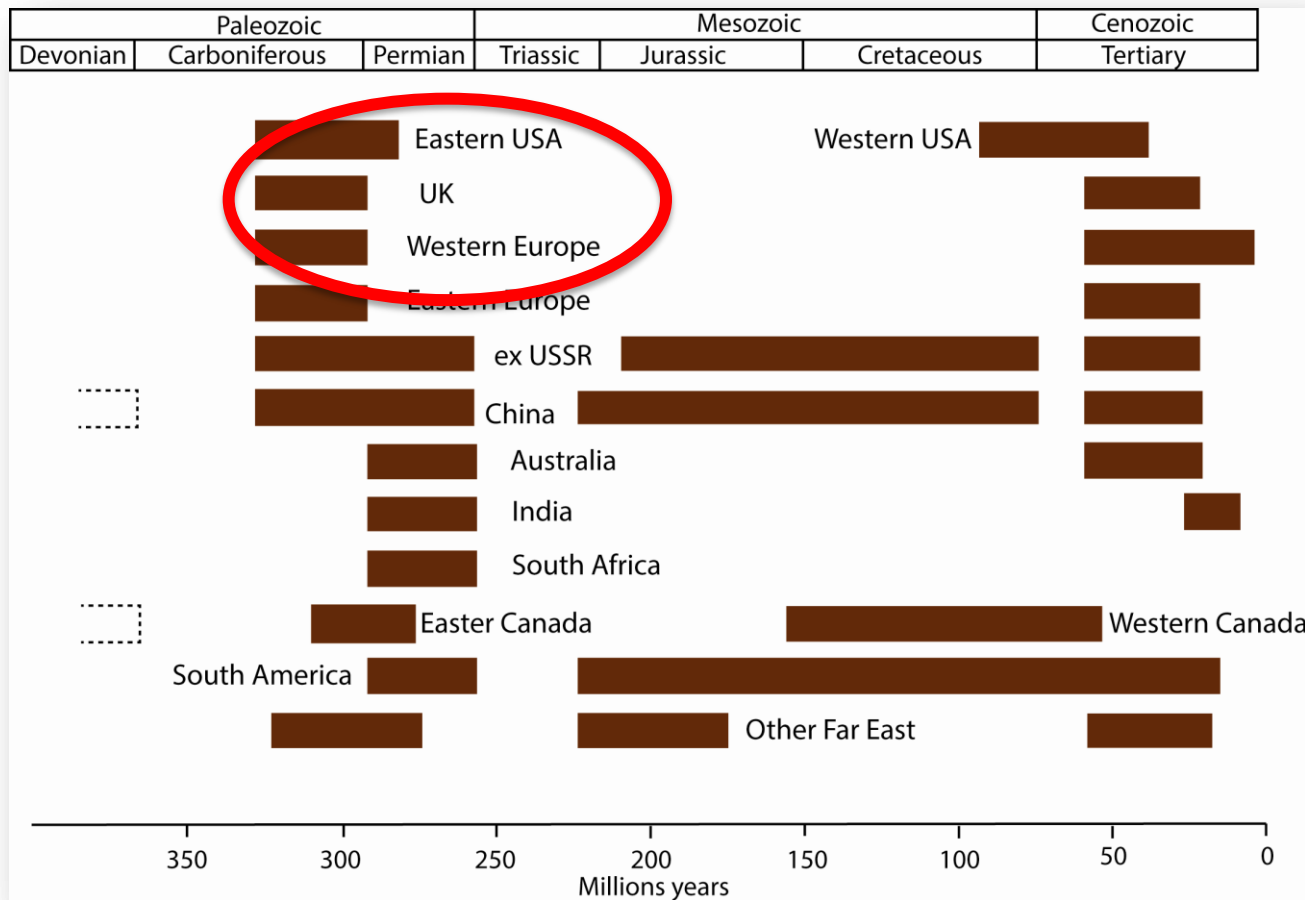
² Total SA, Pau, France



AAPG

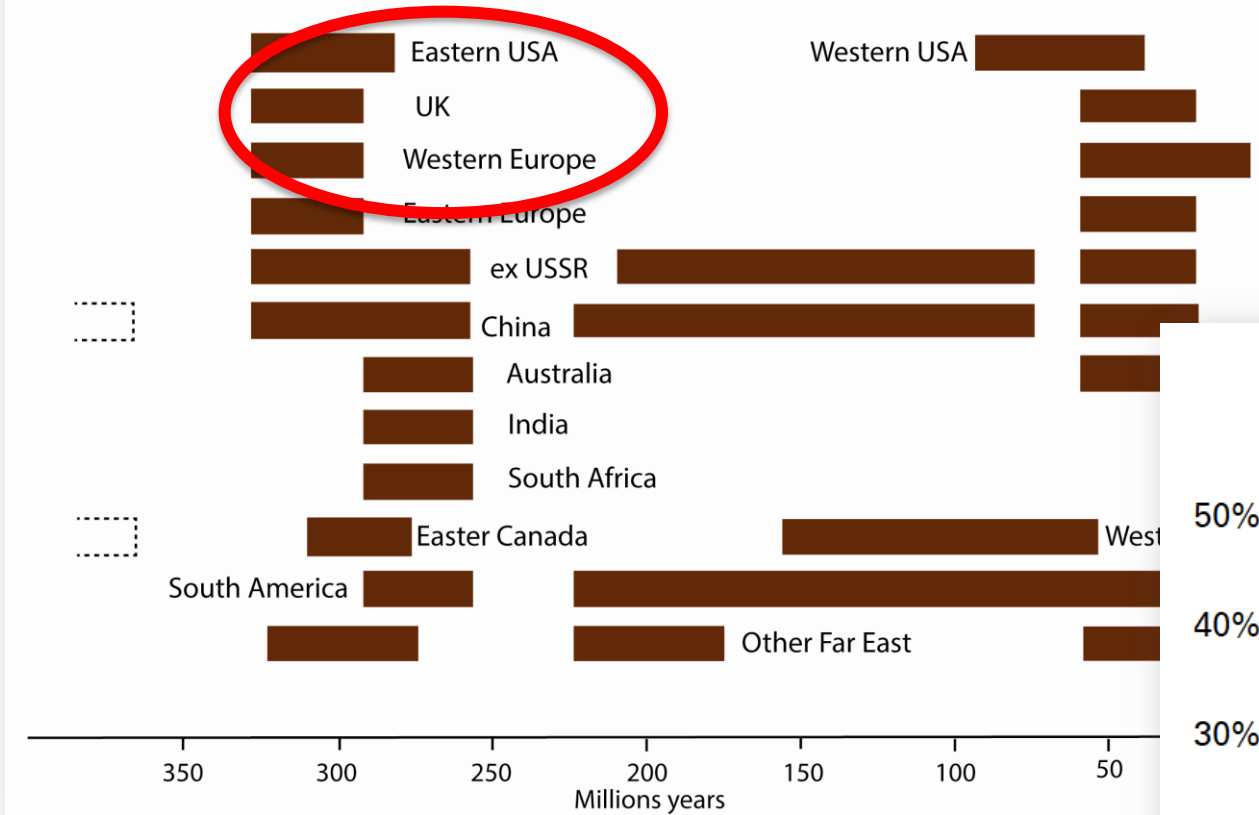
Annual Convention
& Exhibition 2015

SUSTAINED IMPORTANCE OF COAL-BEARING SUCCESSIONS



Geological age distribution of principal World's black coal
and lignite deposits (modified from Walker, 2000 and Thomas, 2002)

Paleozoic			Mesozoic			Cenozoic
Devonian	Carboniferous	Permian	Triassic	Jurassic	Cretaceous	Tertiary

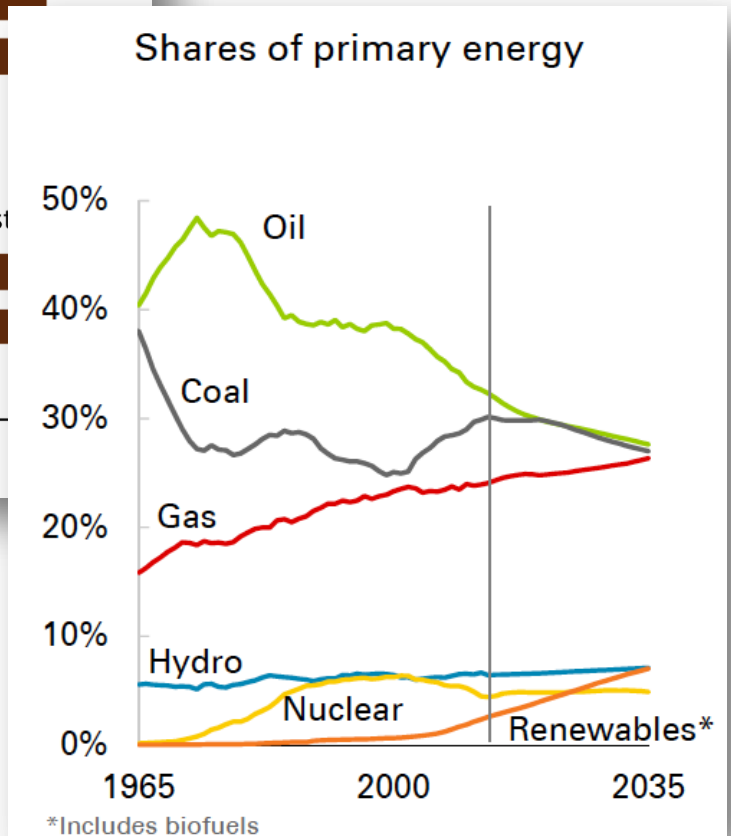


Geological age distribution of principal World's black coal and lignite deposits (modified from Walker, 2000 and Thomas, 2002)

**COAL WILL REMAIN AN IMPORTANT
GEO-ENERGY RESOURCE IN THE
NEAR FUTURE**

**SUSTAINED
IMPORTANCE OF
COAL-BEARING
SUCCESSIONS**

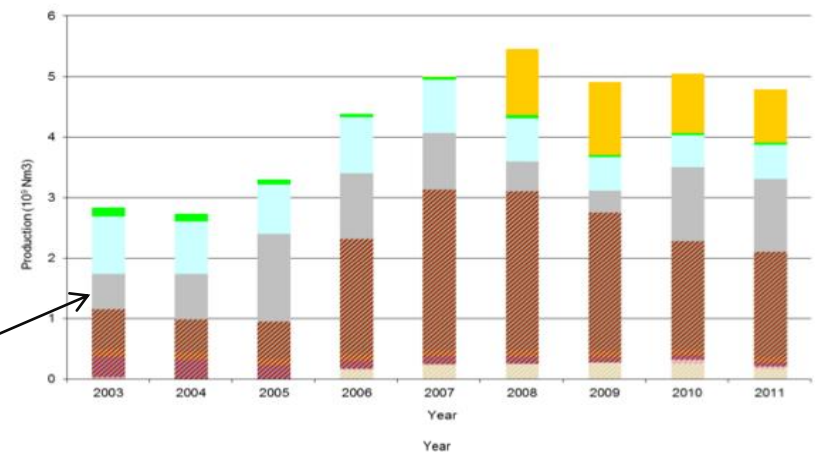
BP Energy outlook 2035



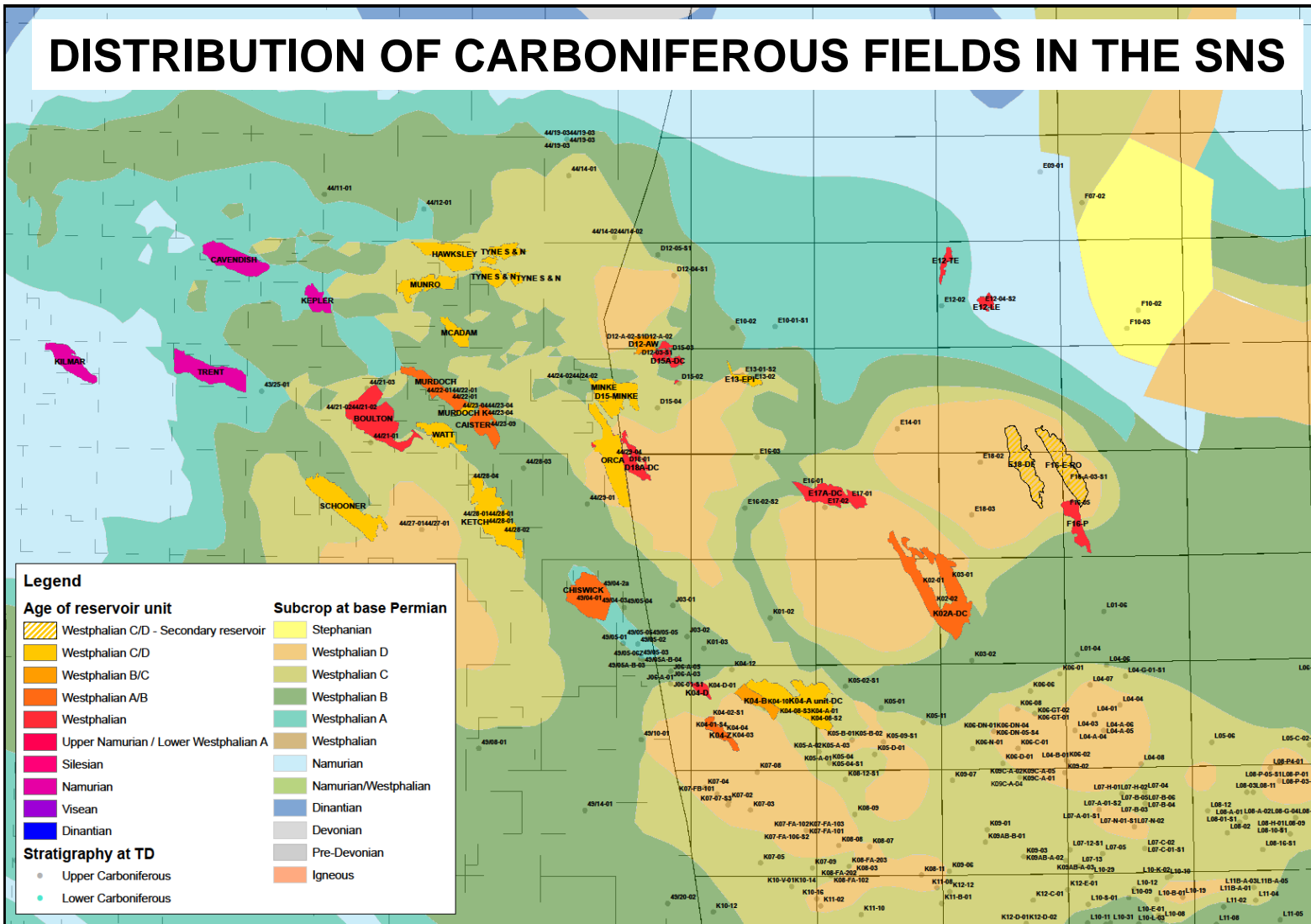
Producing from Carboniferous the Dutch/UK SNS: Where are we now ?

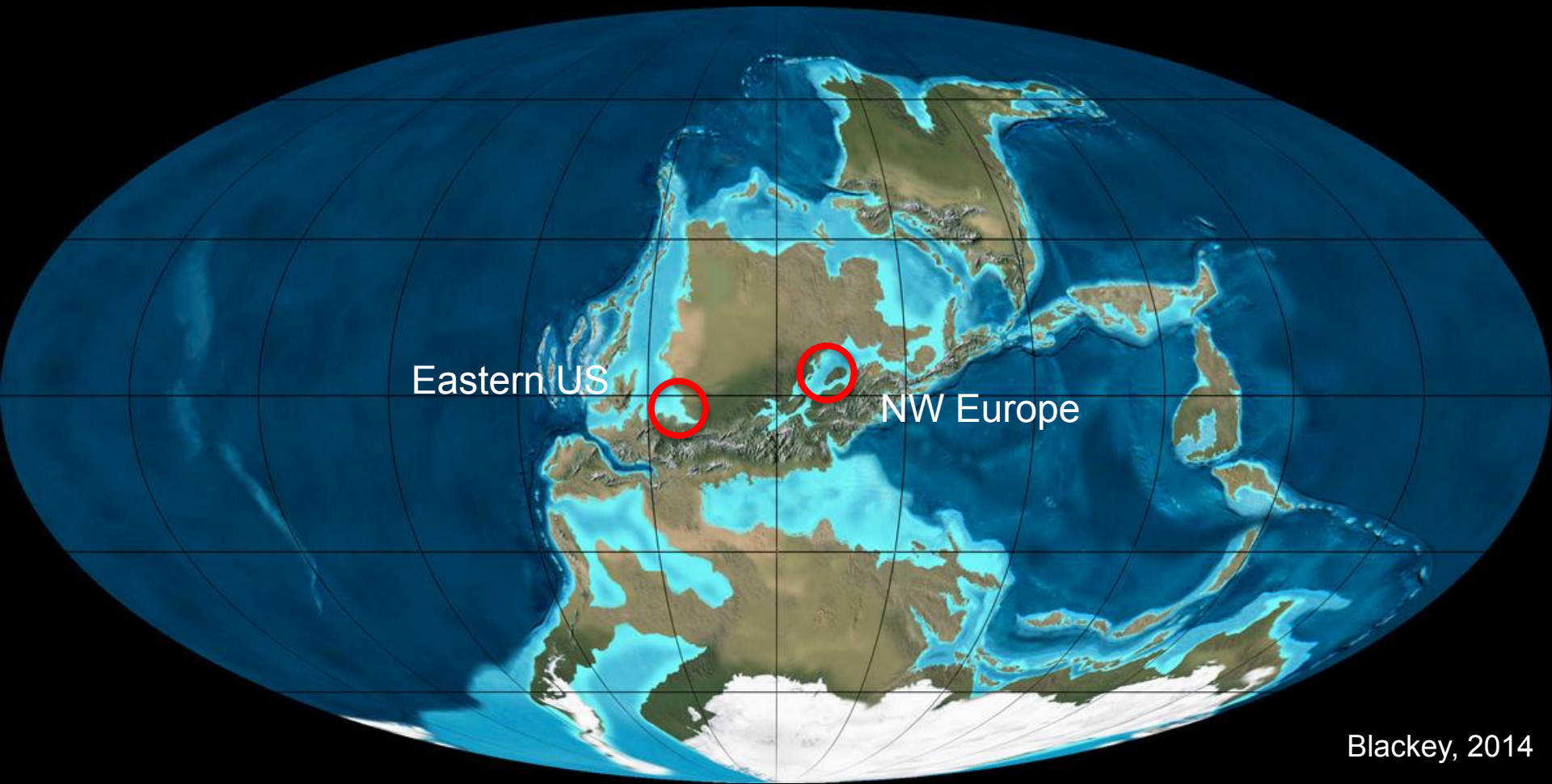
- Effective production of deep Carboniferous gas reservoirs is largely driven by understanding reservoir properties distribution and sand connectivity in a relatively low net:gross environment.
- Develop a predictive model assisting the location and characterization of reservoir quality and connected net-volumes is challenging:
 - complex facies heterogeneity
 - internal reservoir architecture
 - diagenetic history.

Carboniferous
Reservoirs



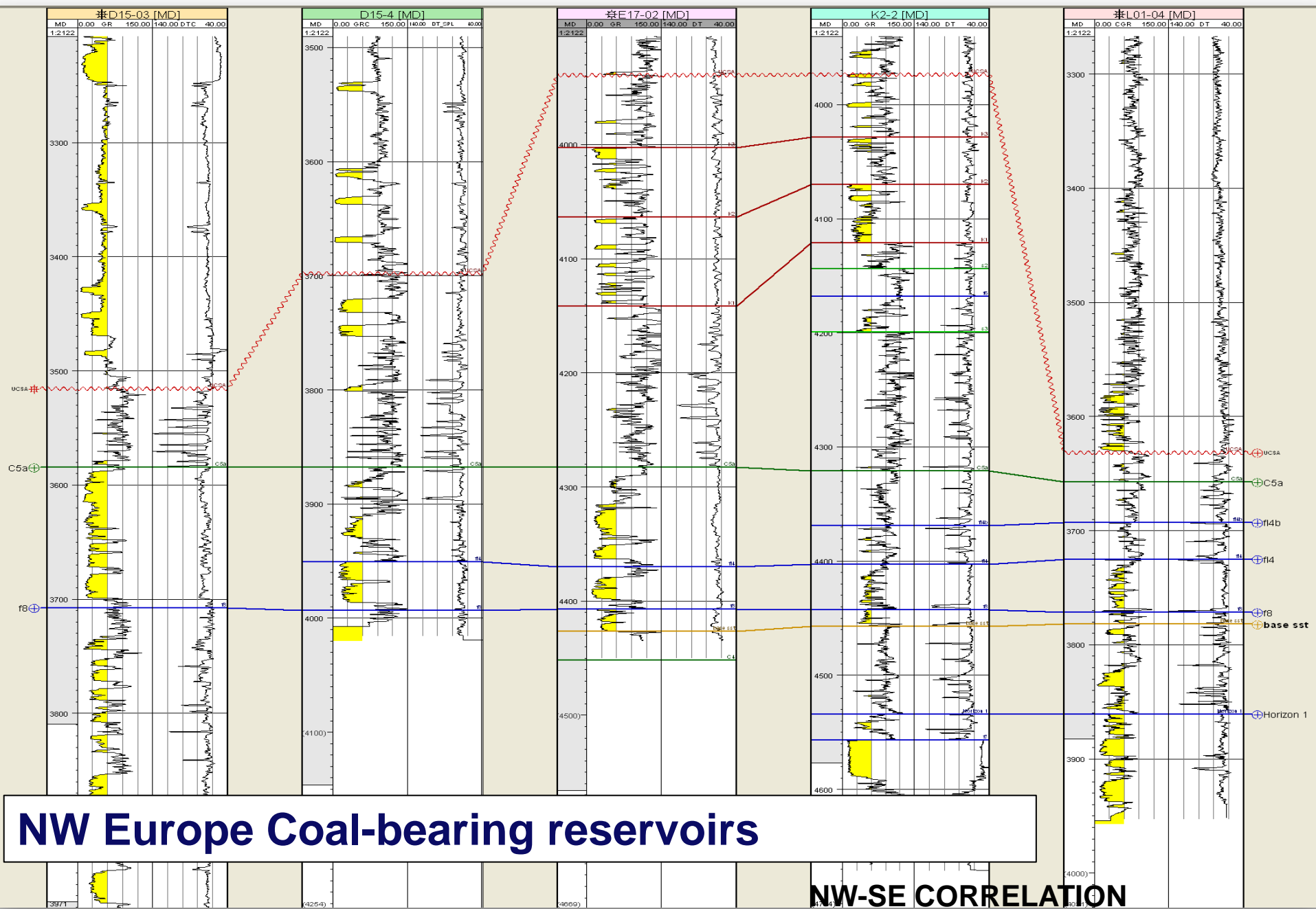


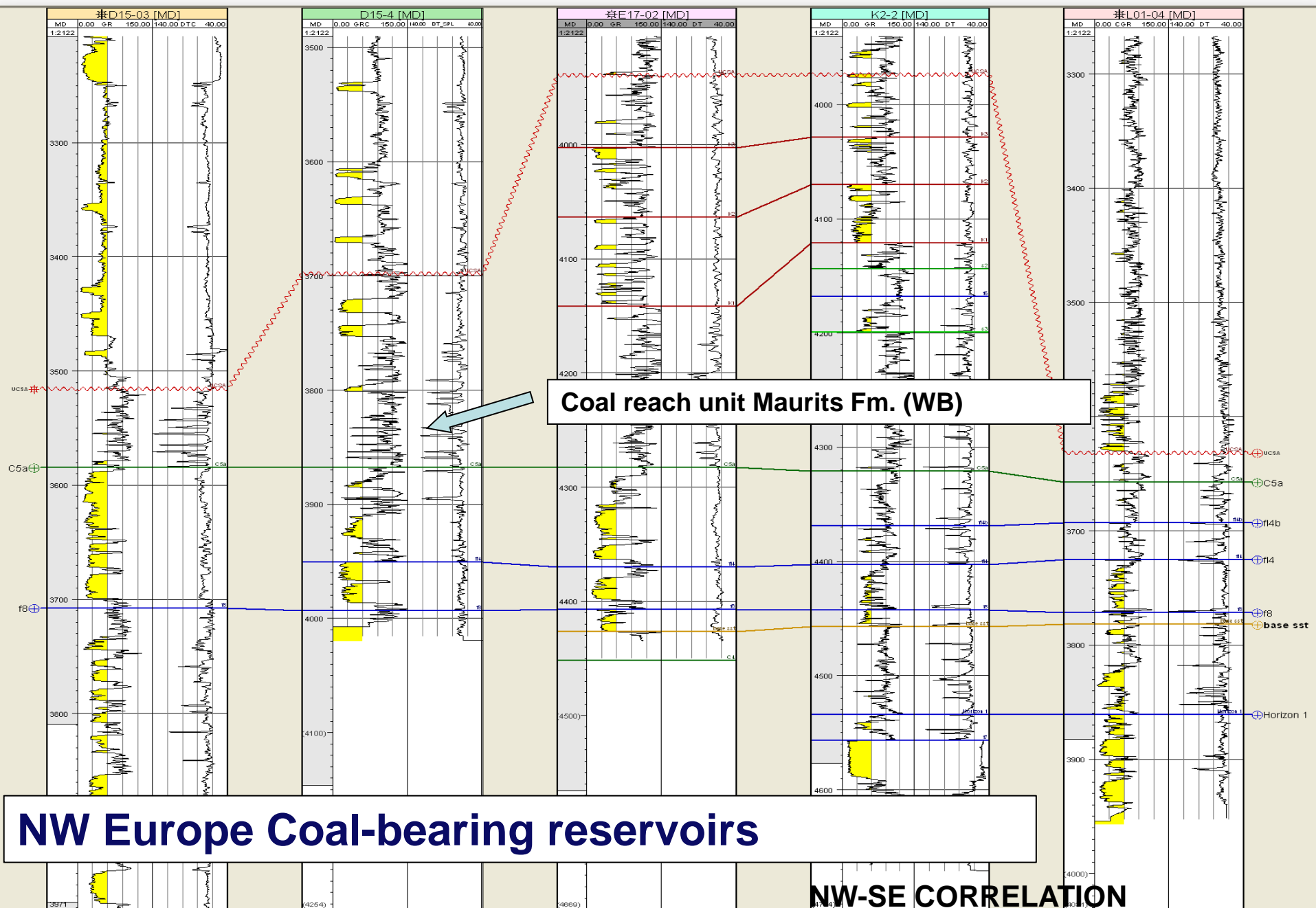
[illegible]



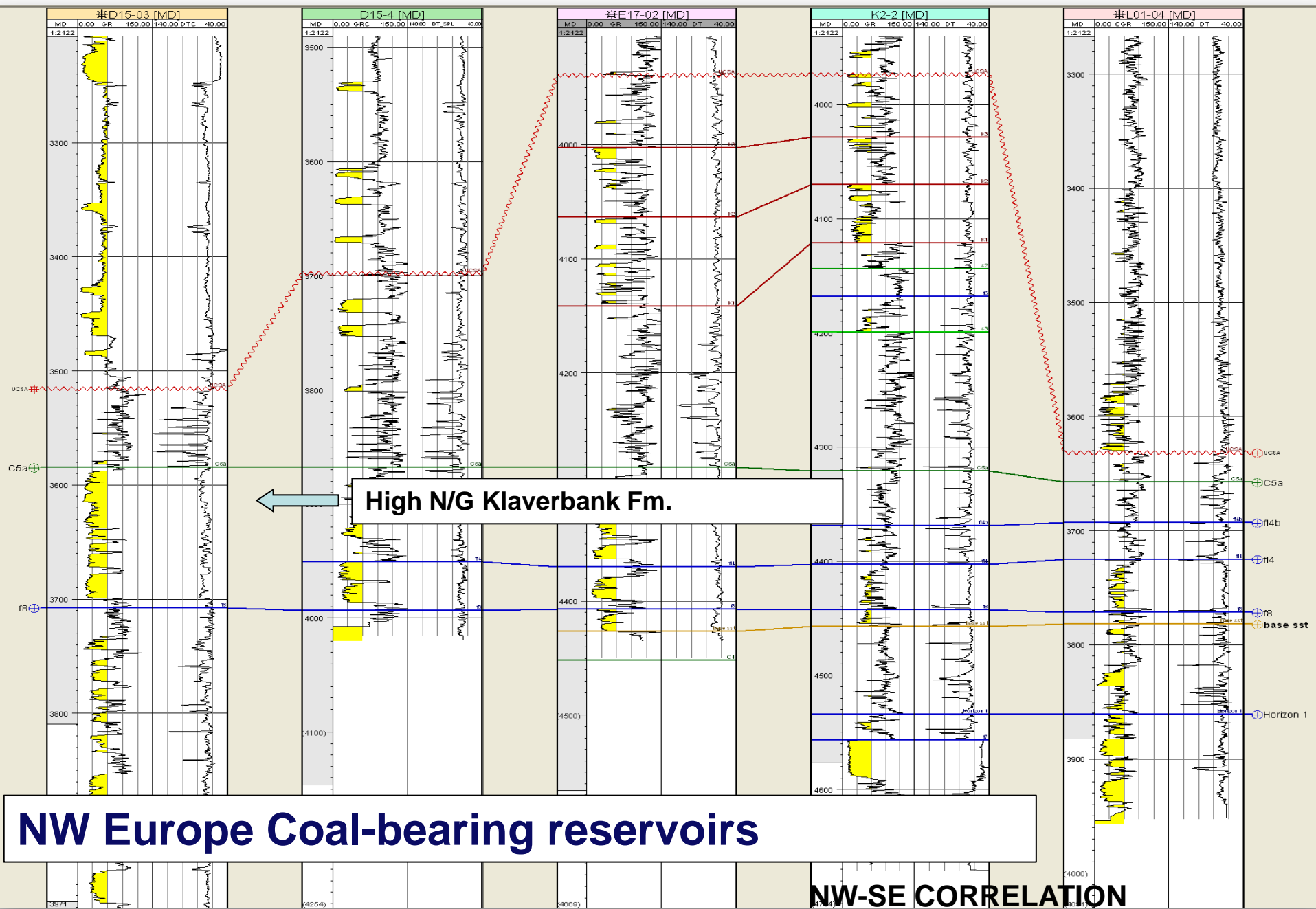
Blackey, 2014

Upper Carboniferous (Westphalian B / Mid Pennsylvanian)

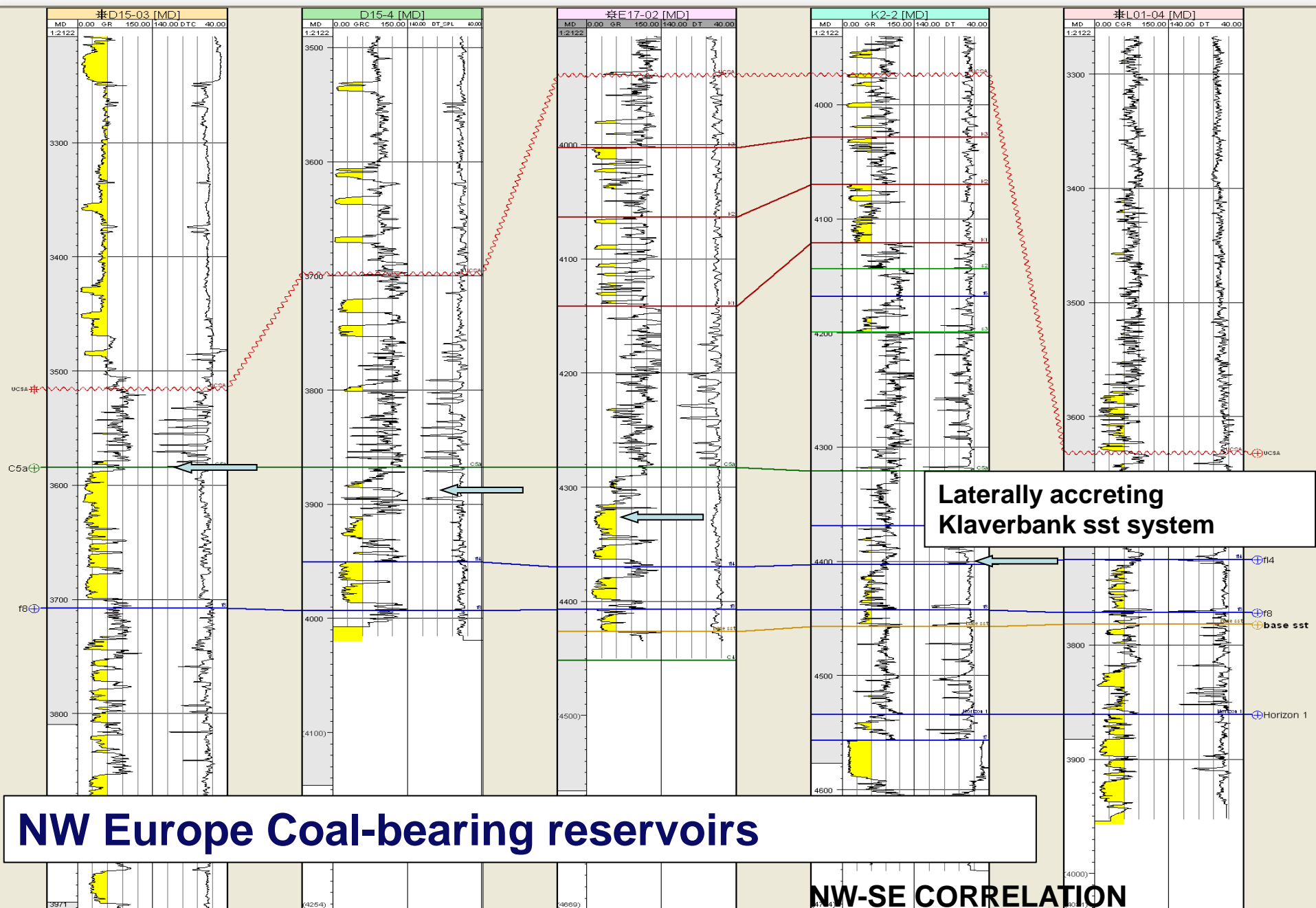




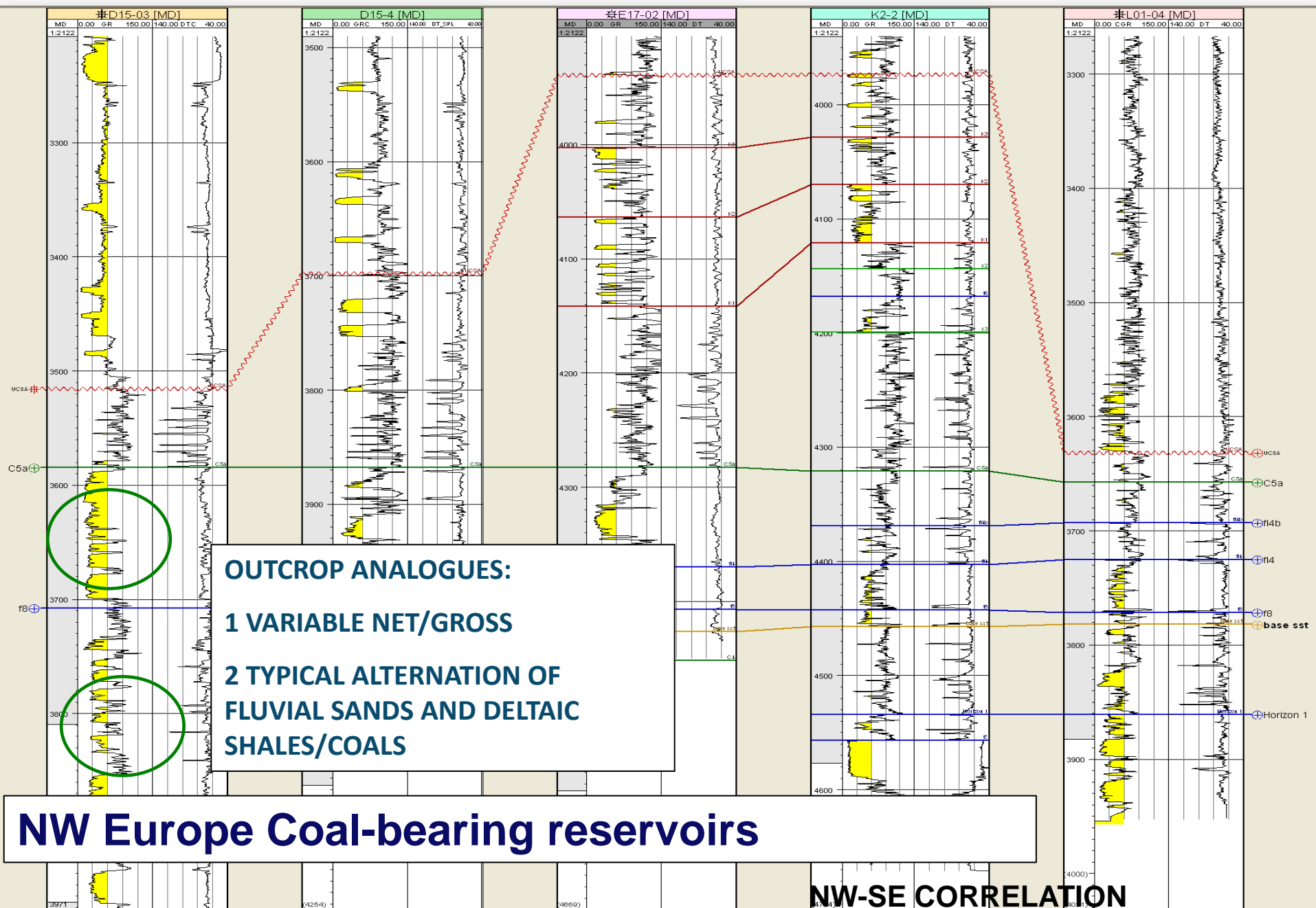
NW Europe Coal-bearing reservoirs

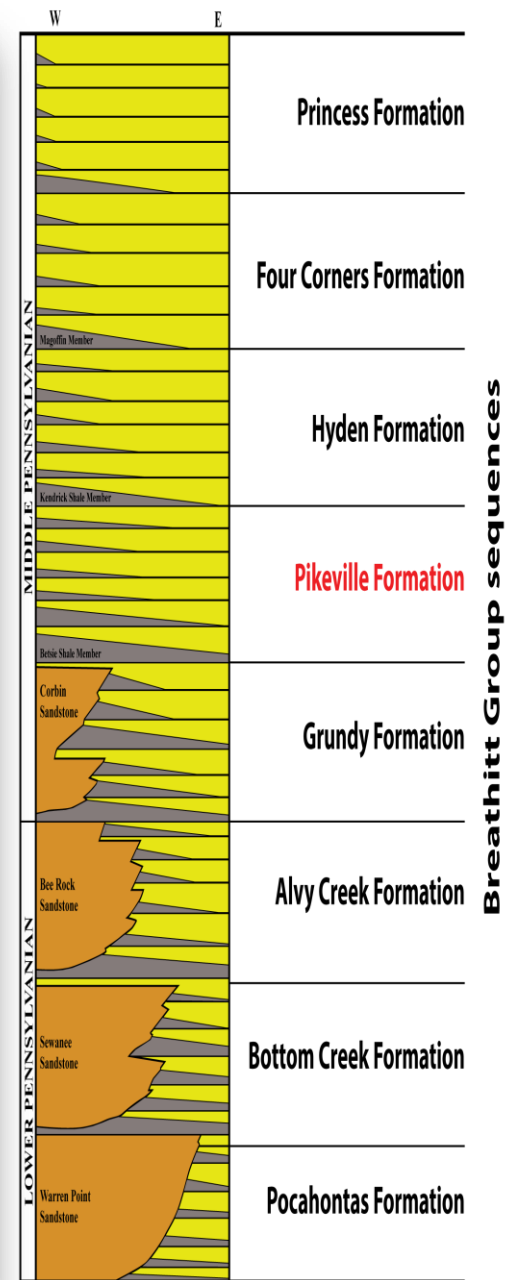


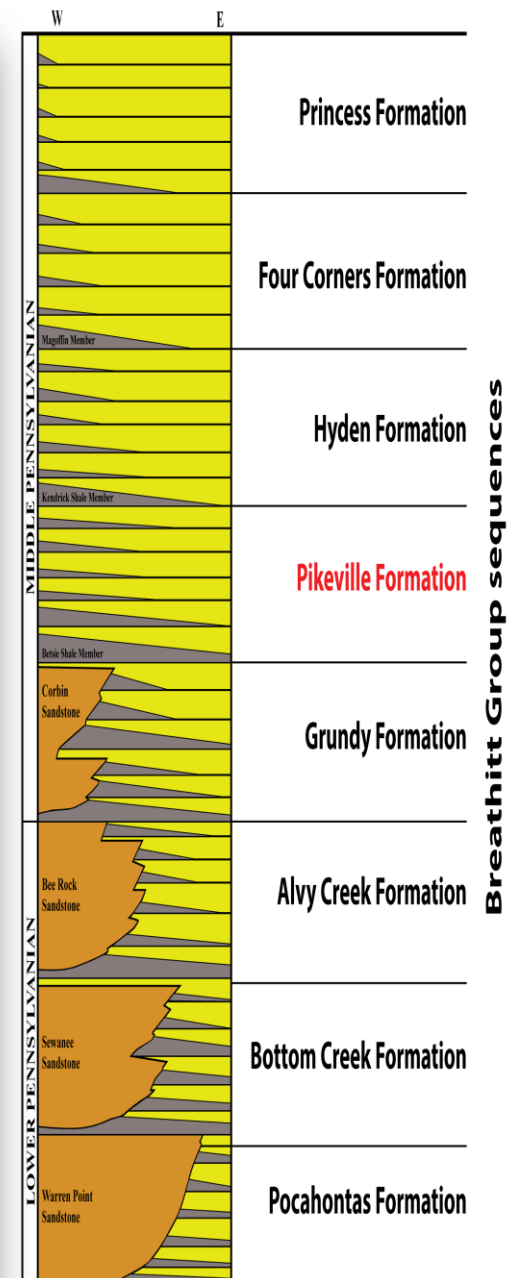
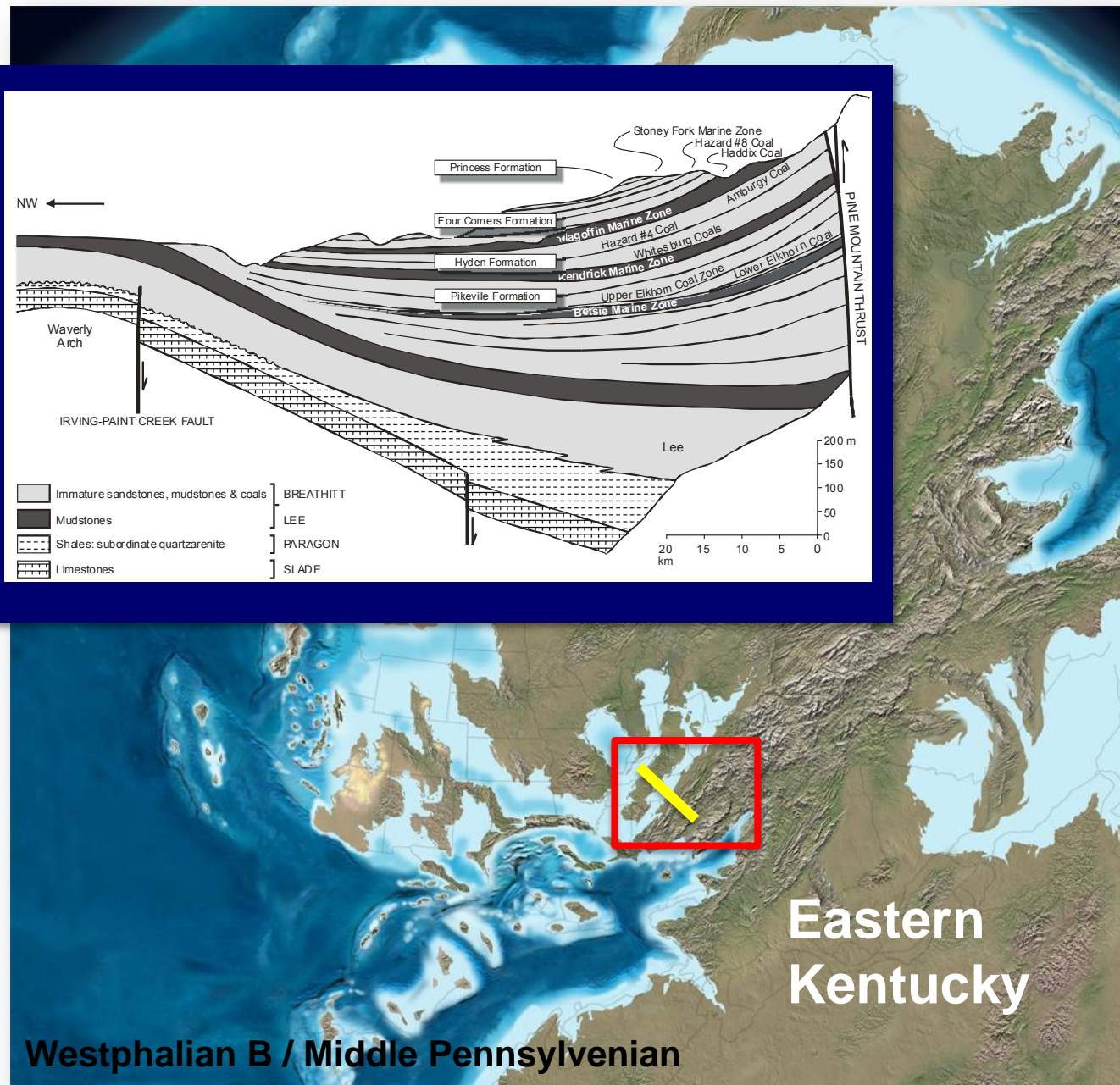
NW Europe Coal-bearing reservoirs



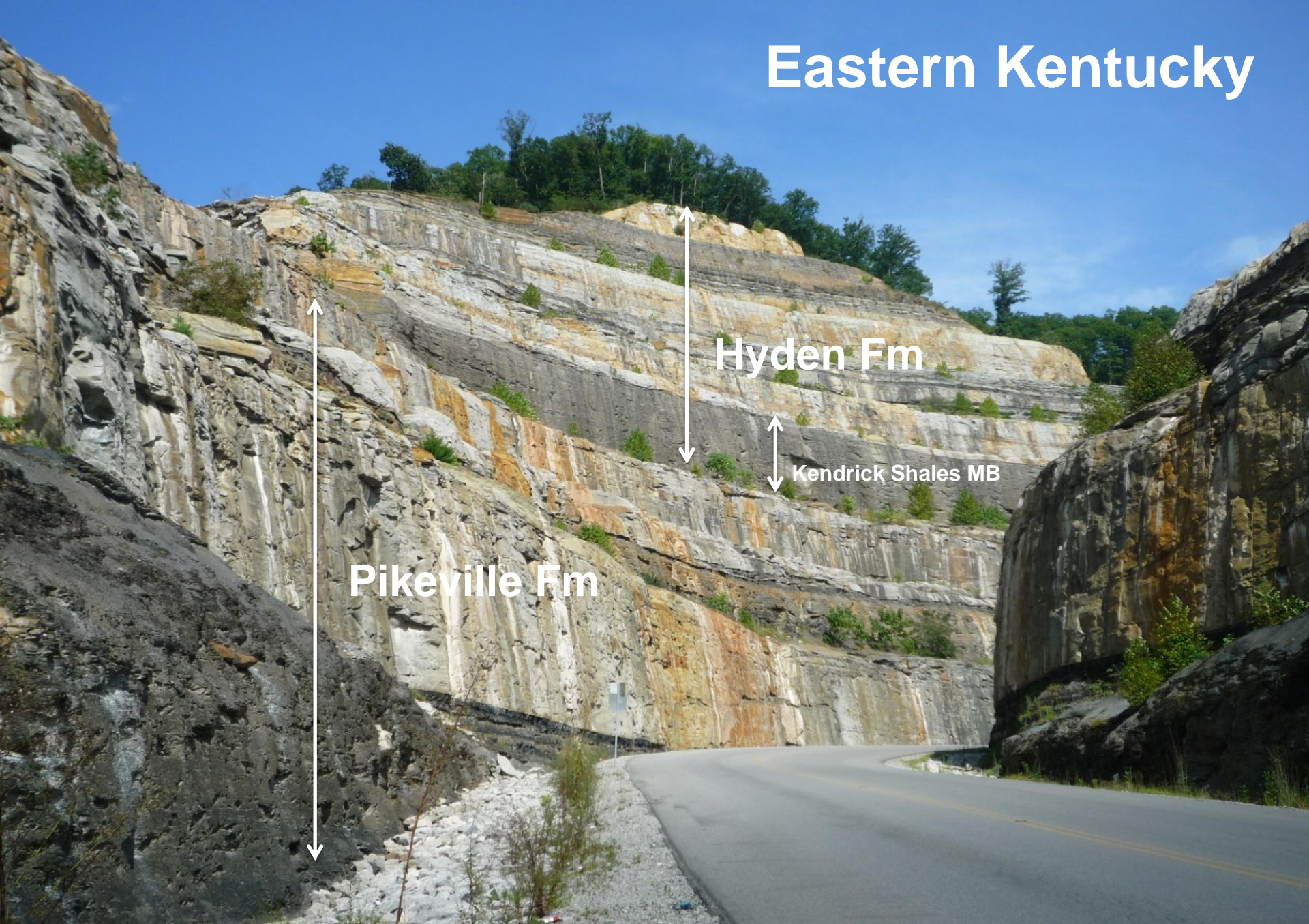
NW Europe Coal-bearing reservoirs

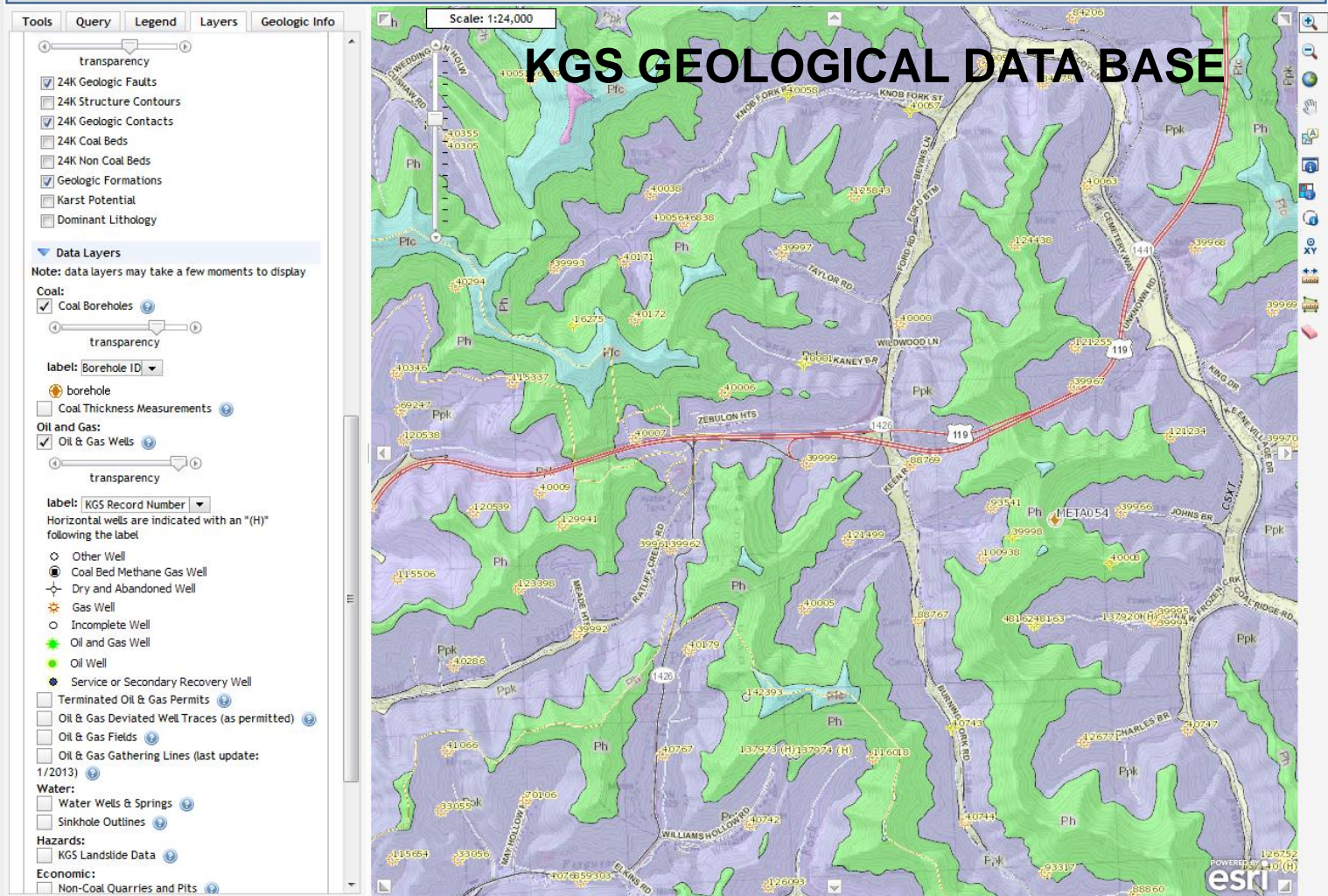






Eastern Kentucky





Tools Query Legend Layers Geologic Info

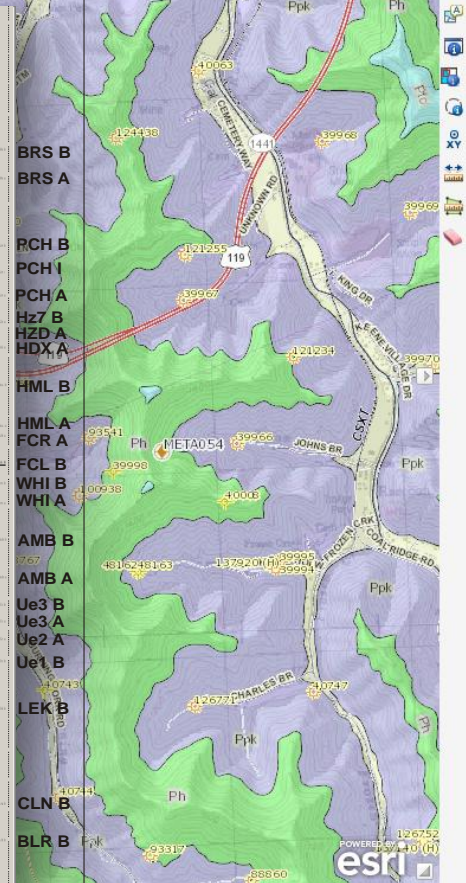
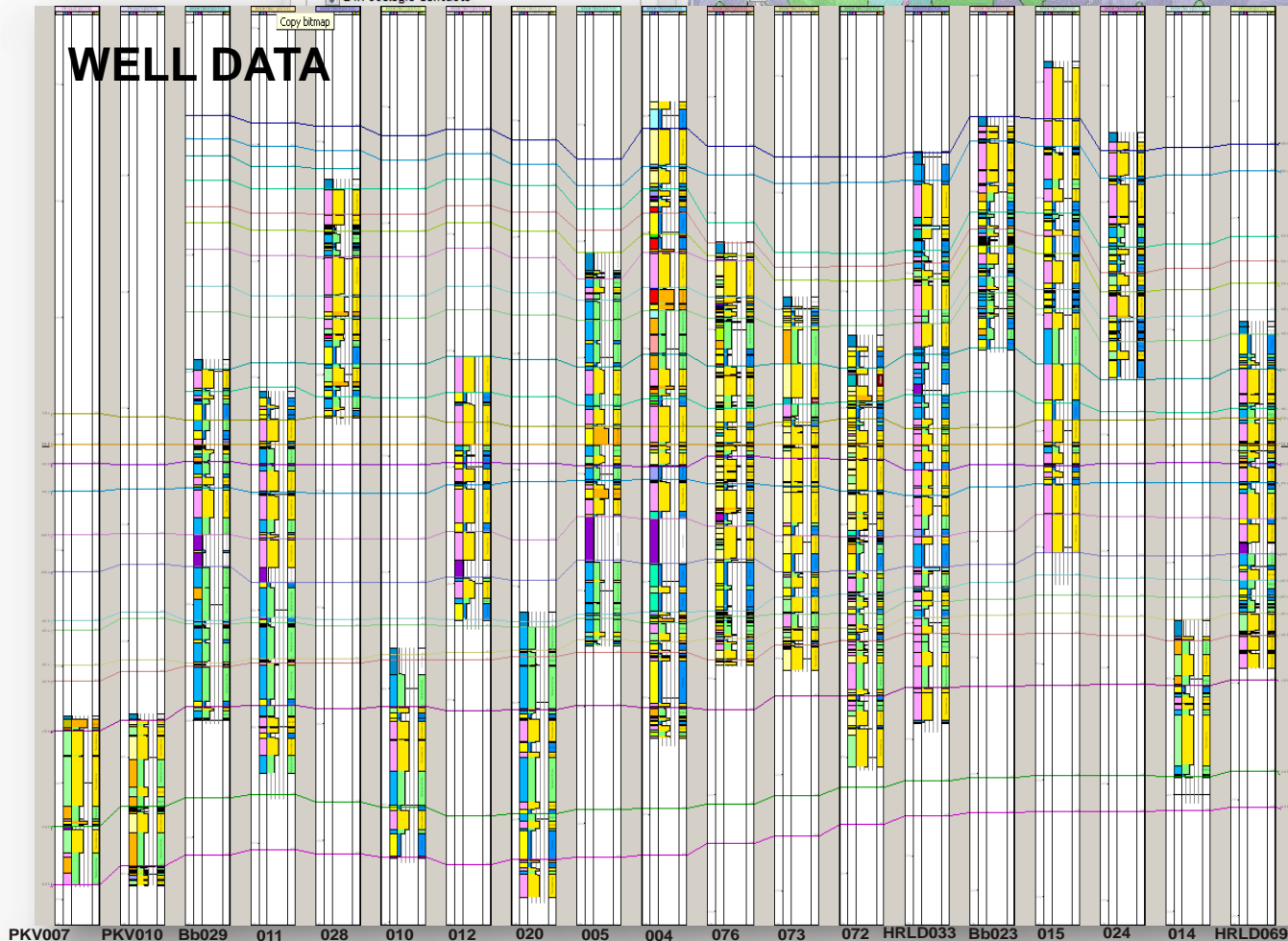
Scale: 1:24,000

transparency

- ☒ 24K Geologic Faults
- ☐ 24K Structure Contours
- ☒ 24K Geologic Contacts

KGS GEOLOGICAL DATA BASE

WELL DATA



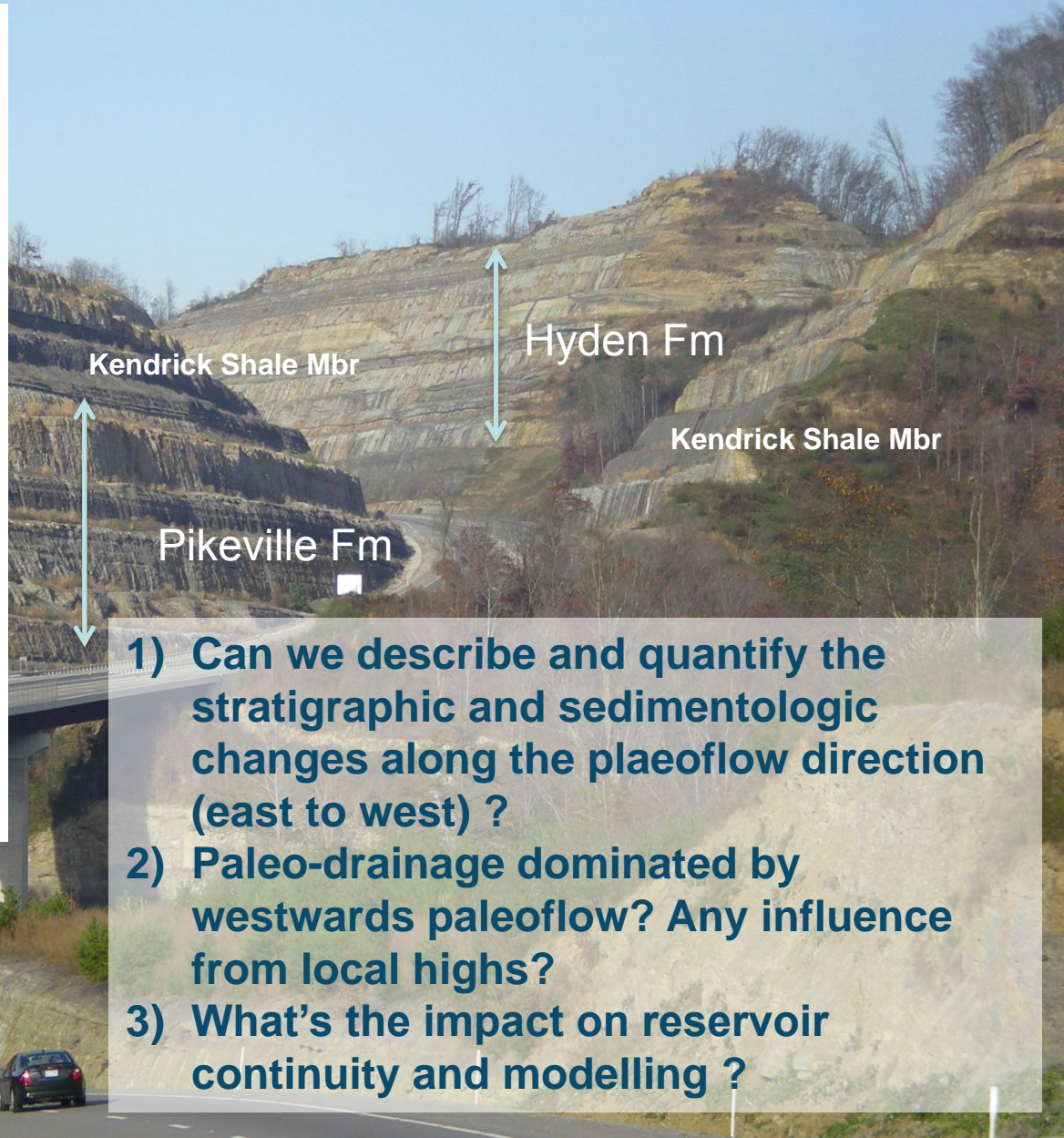
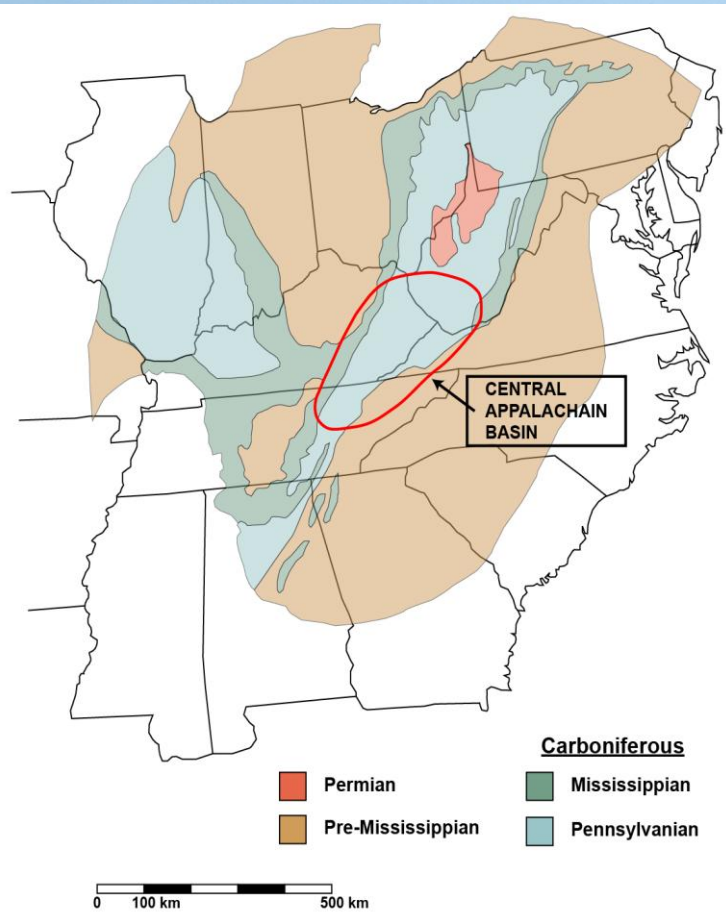


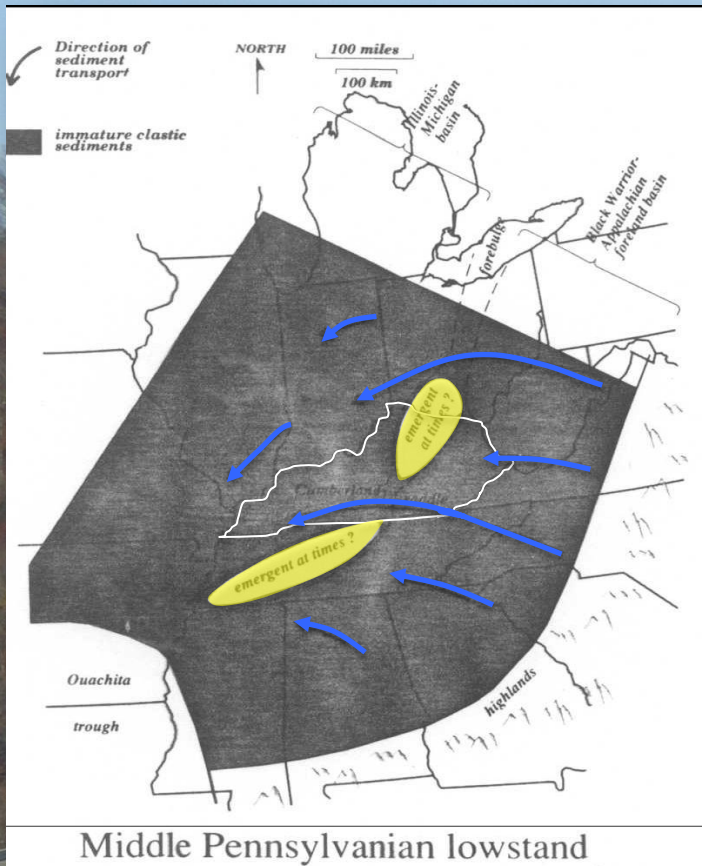
Kendrick Shale Mbr

Hyden Fm

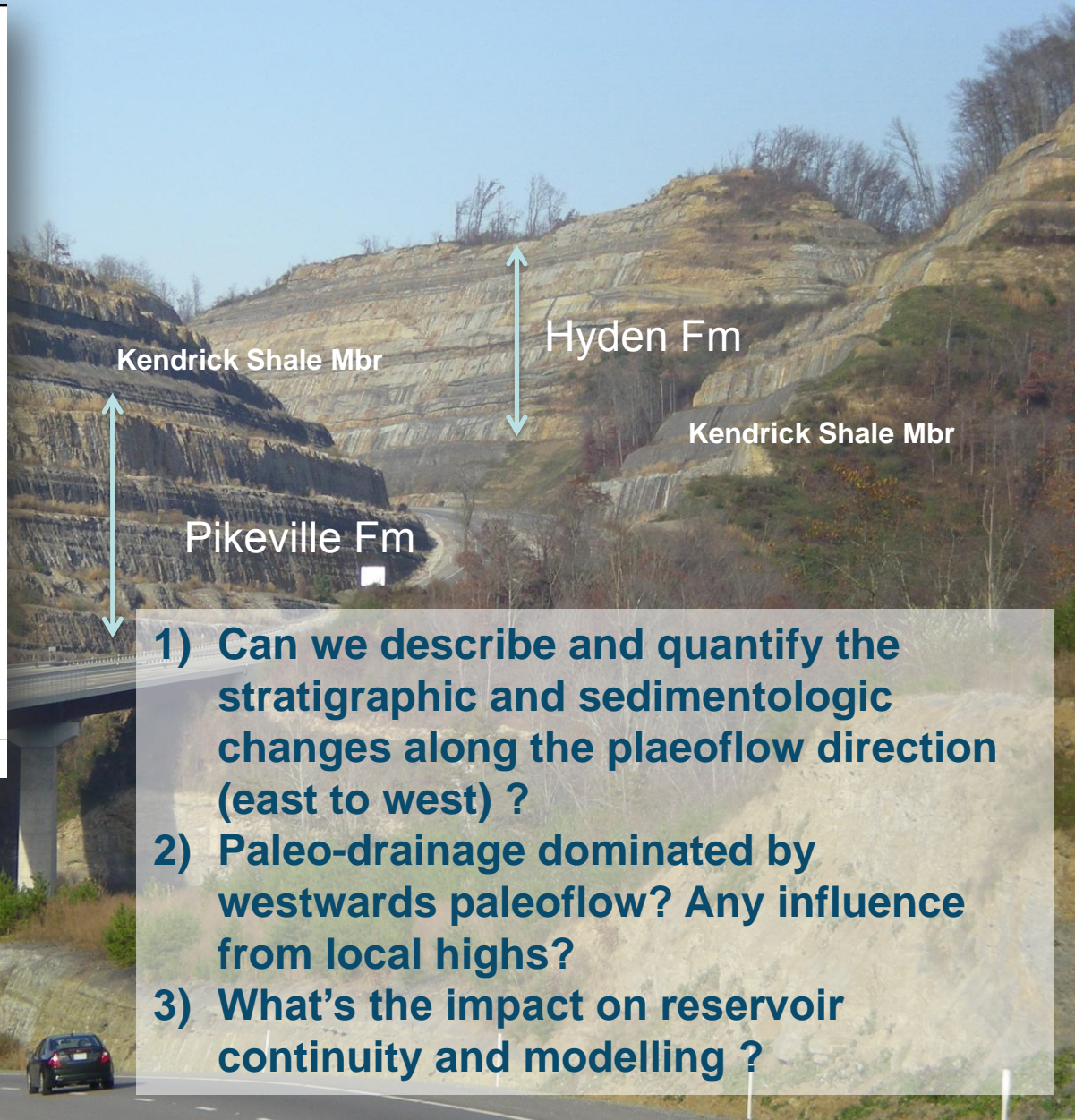
Kendrick Shale Mbr

Pikeville Fm





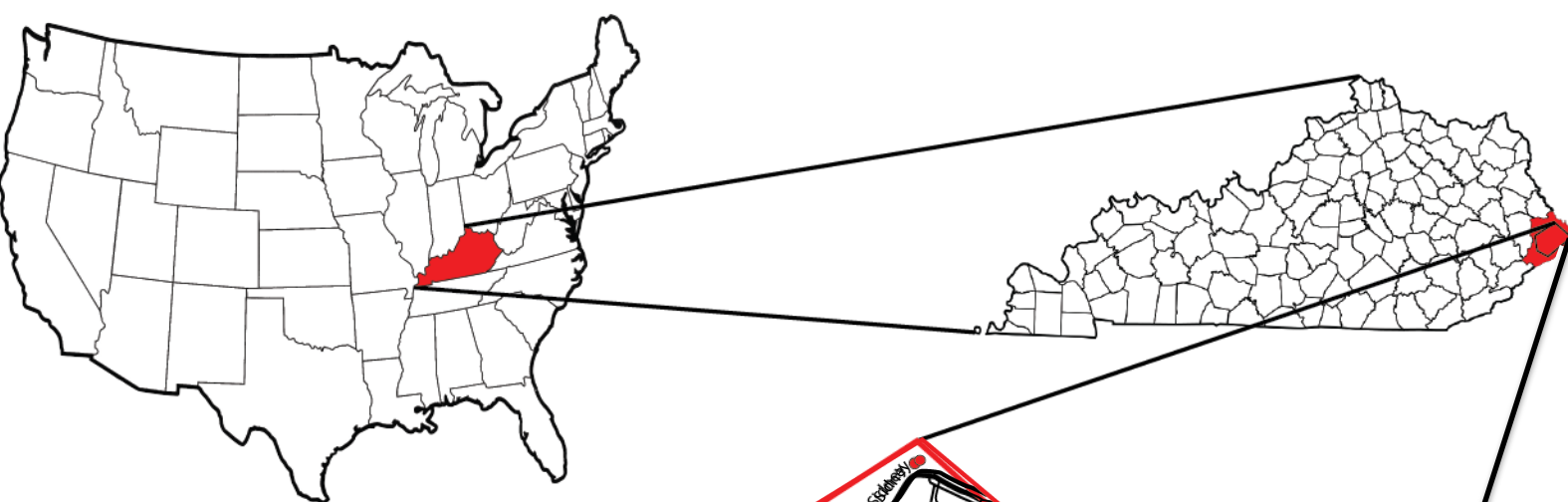
Chesnut, 1993



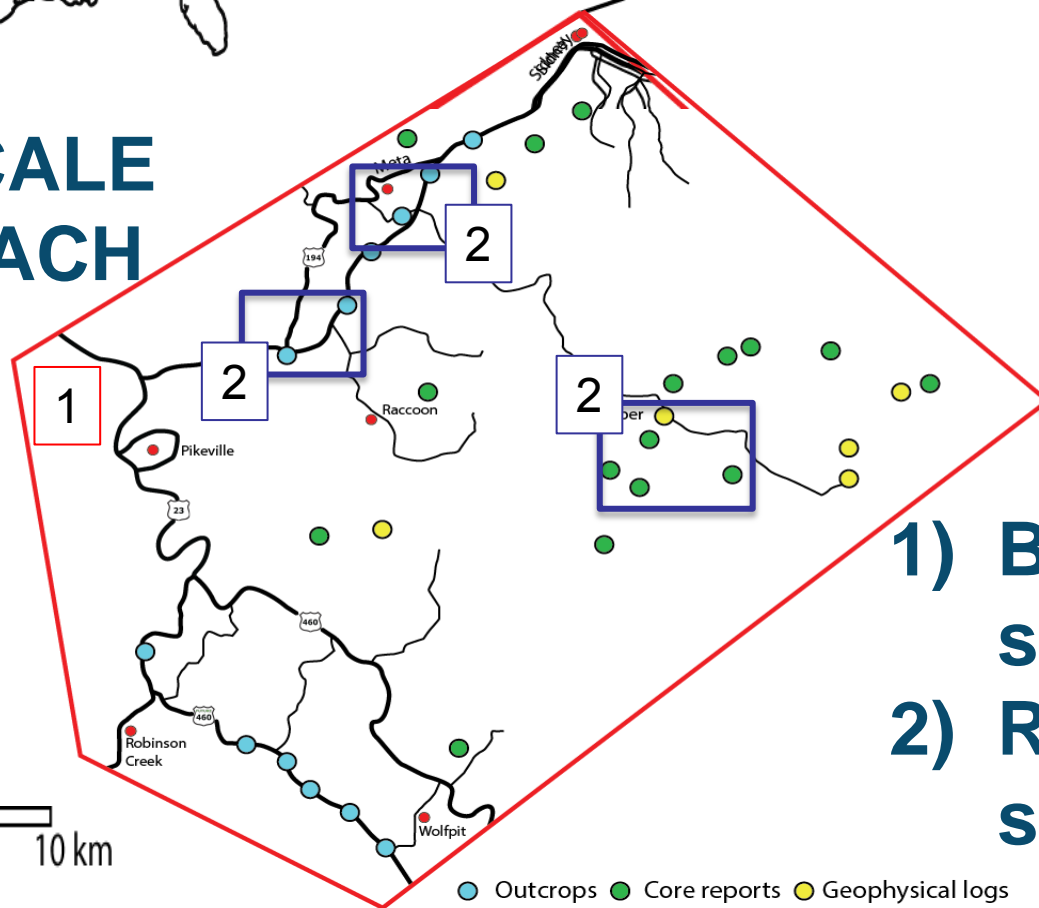
- 1) Can we describe and quantify the stratigraphic and sedimentologic changes along the paleoflow direction (east to west) ?
- 2) Paleo-drainage dominated by westwards paleoflow? Any influence from local highs?
- 3) What's the impact on reservoir continuity and modelling ?

Study Approach

- Regional and Reservoir-scale approach
 - 30 x 30 km area
 - 0.5 x 0.5 km area (sector models)
- Closely spaced detailed stratigraphic logs (1:20 scale) of outcrop sections and cores.
- Large photo-panel correlations
- Detailed petrographic study using conventional petrography and QEMSCAN (UNIGE)
 - Provenance, texture, diagenesis (ca. 300 samples)
- Reservoir Property analysis
- Data integration in Geo-cellular models



TWO-SCALE APPROACH



0 5 km 10 km

- 1) Basin/Regional scale
- 2) Reservoir /Field scale

● Outcrops ● Core reports ● Geophysical logs

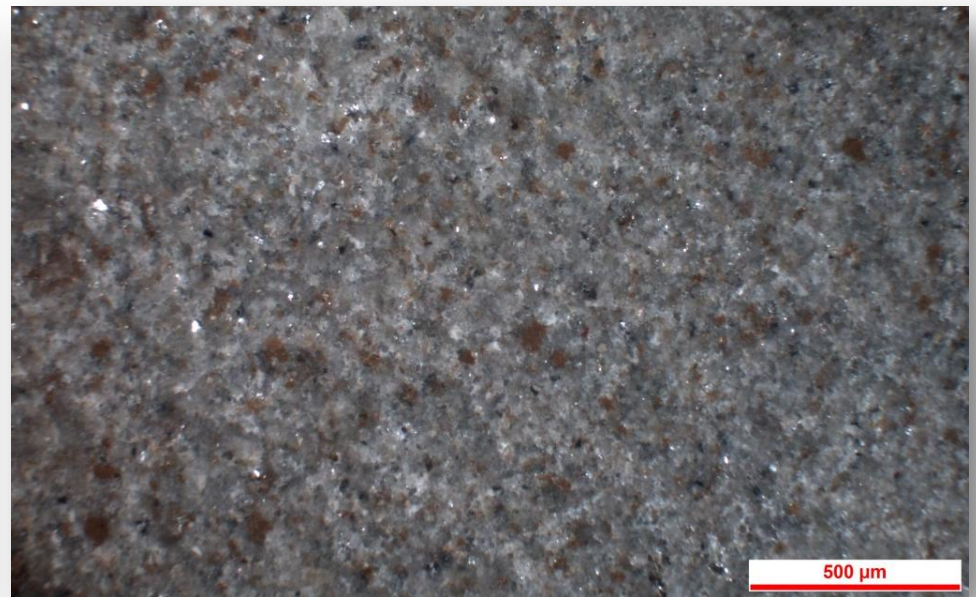
John's Creek outcrop

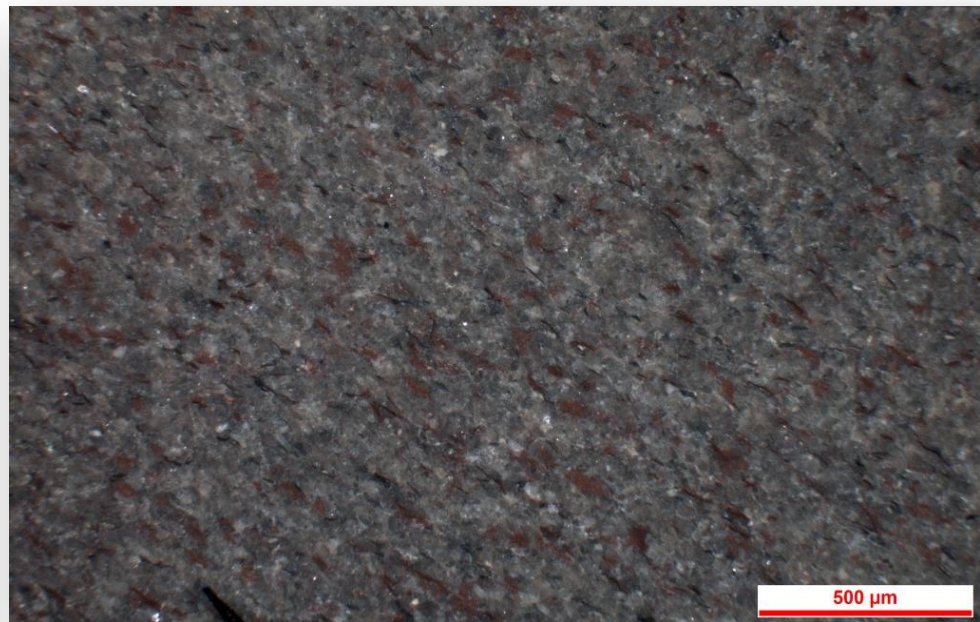
SW

NE

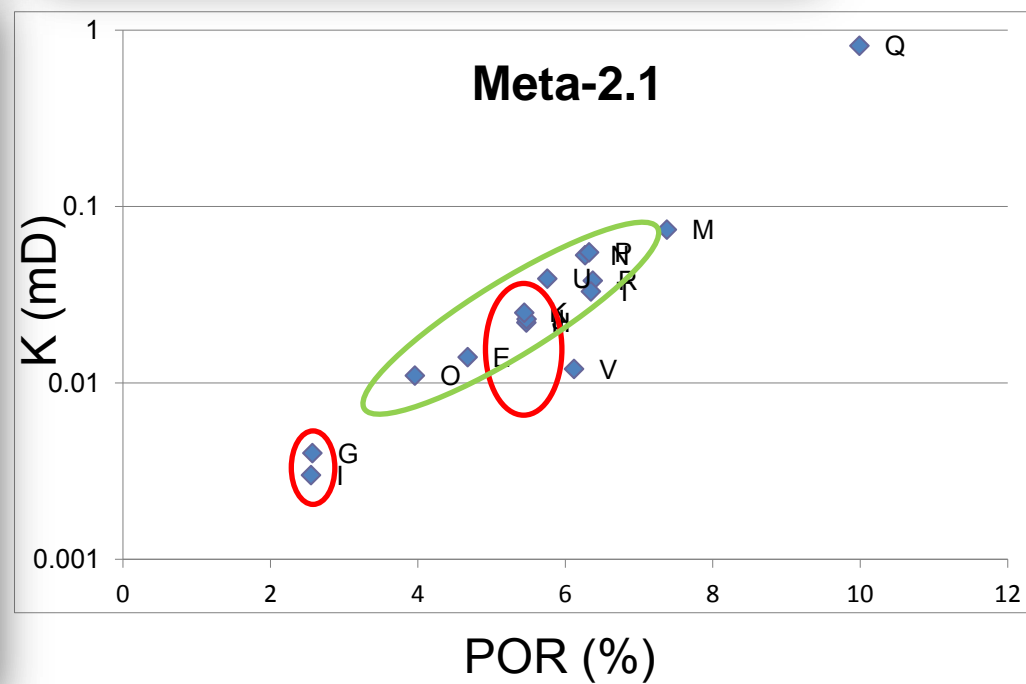
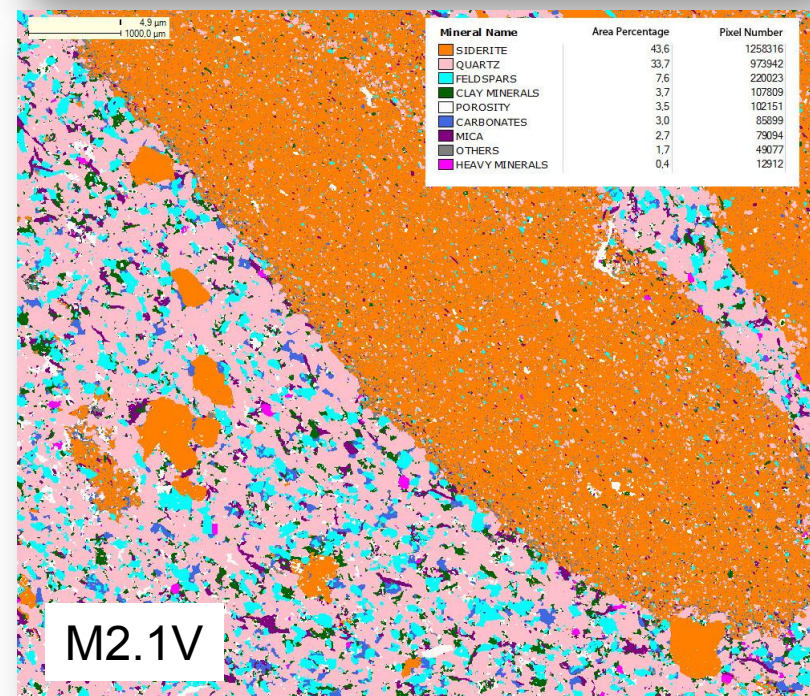
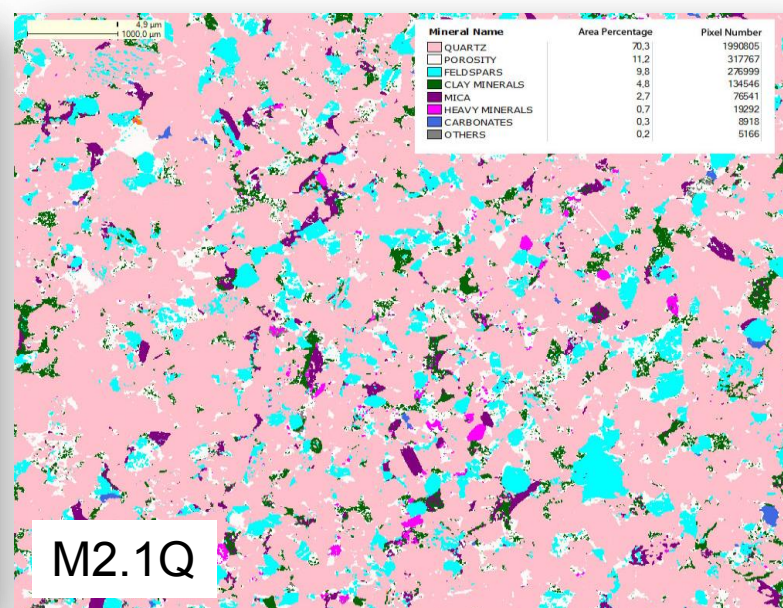
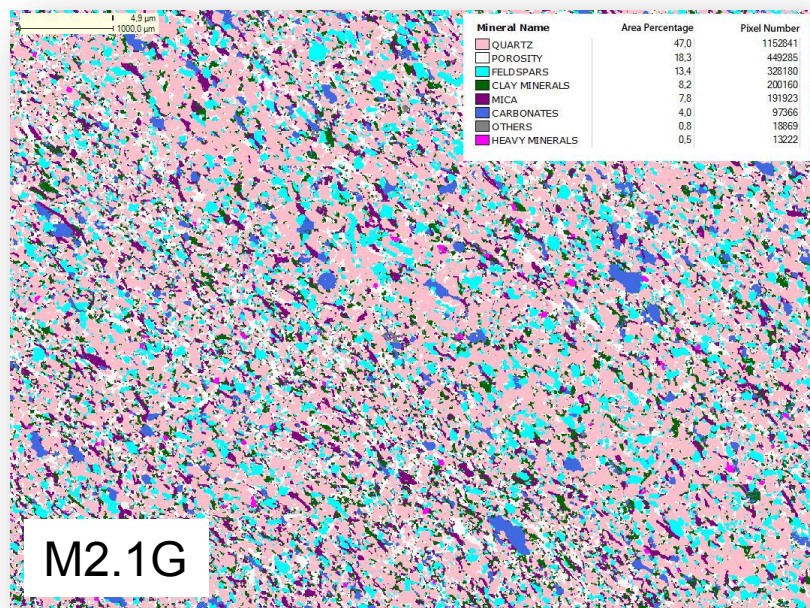


Fluvial deposits Floodplain Upper delta deposits Delta-front deposits





QEMSCAN ANALYSIS

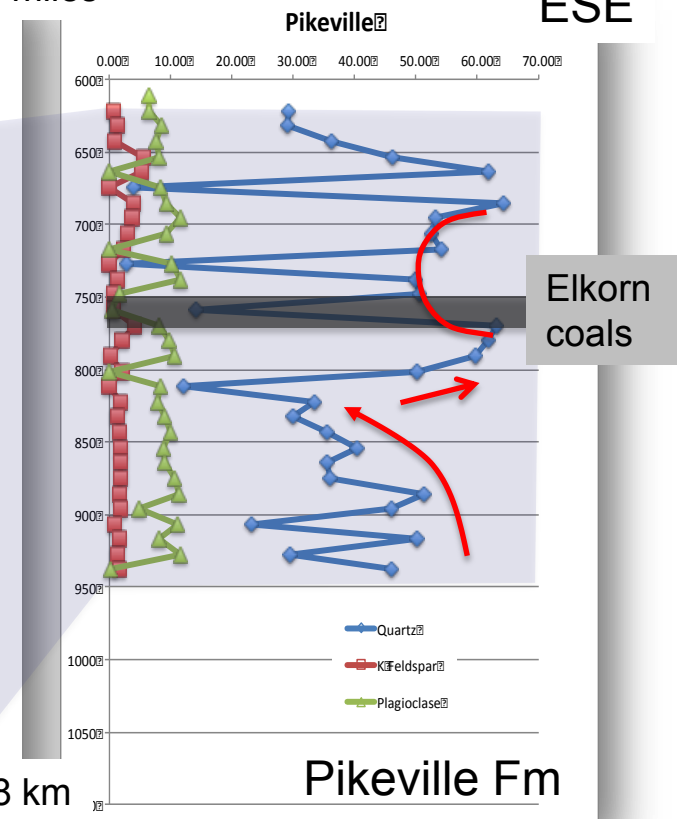
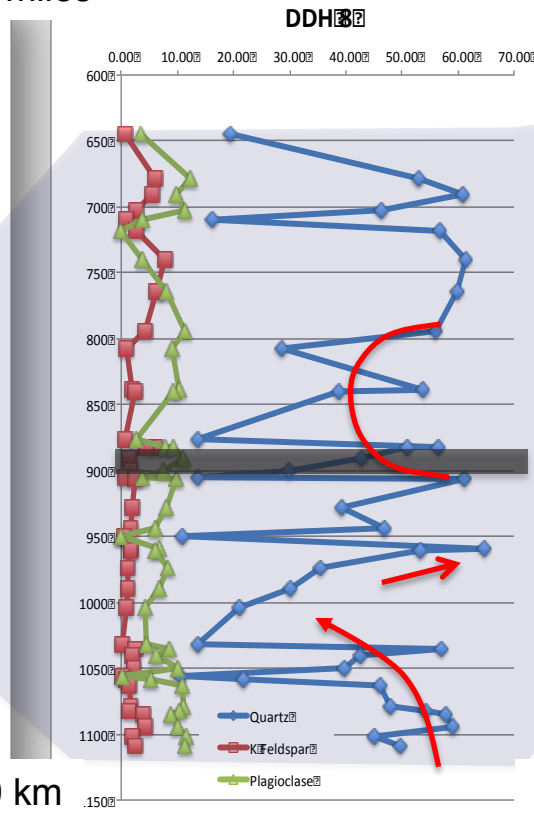
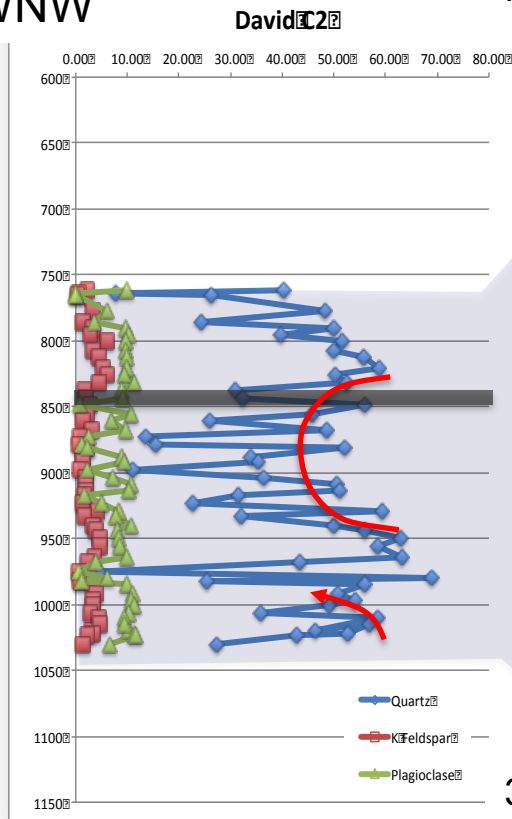


WNW

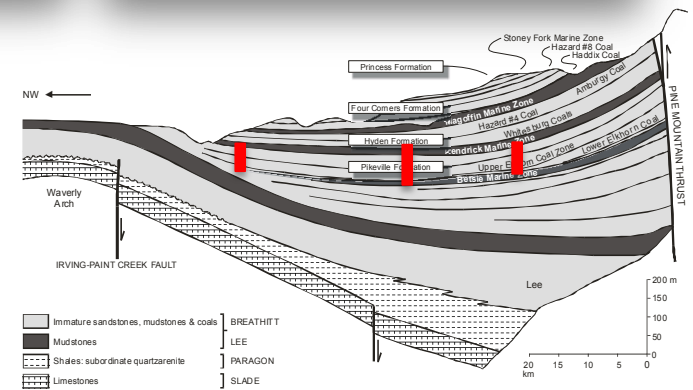
19 miles

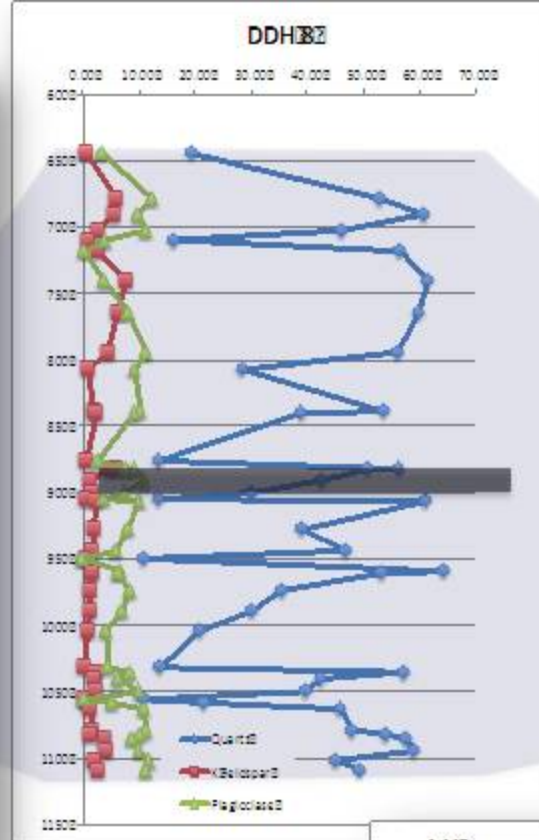
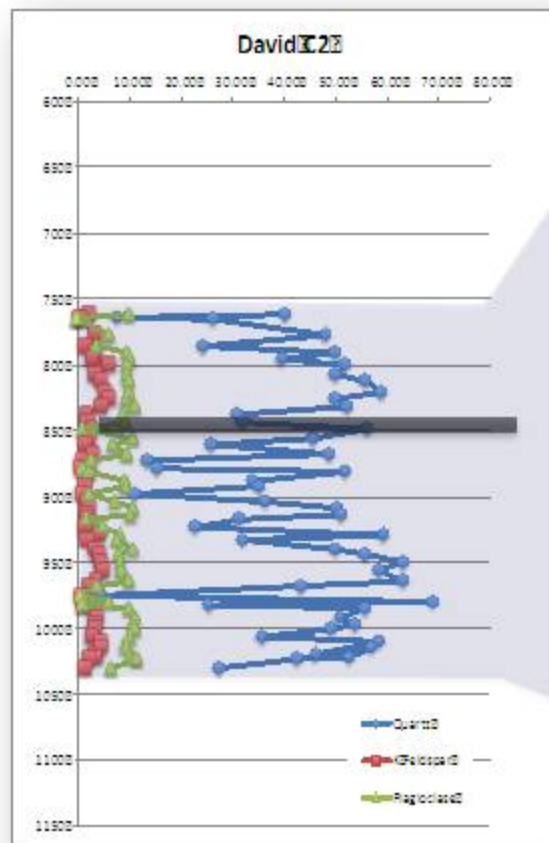
11 miles

ESE

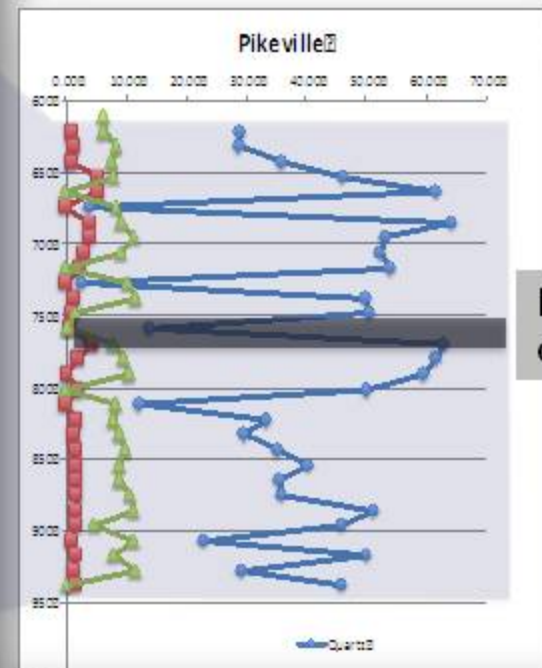


**LARGE
SCALE
APPROCH**

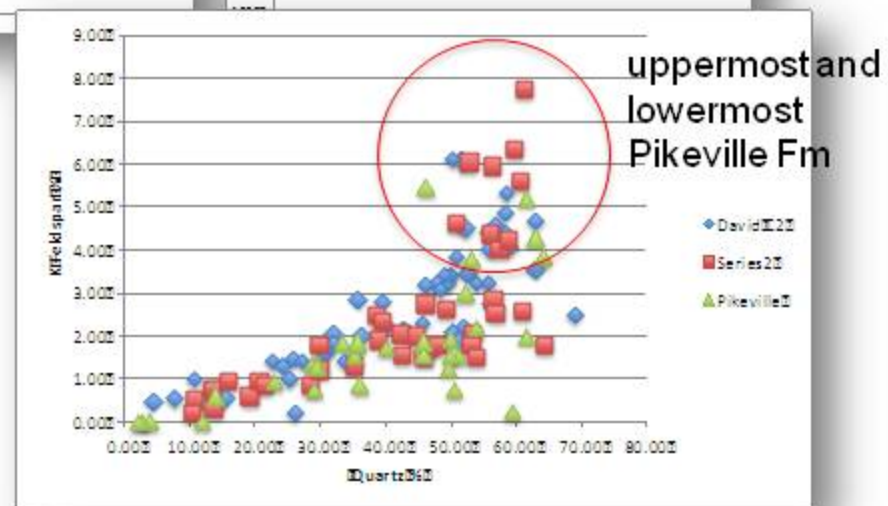


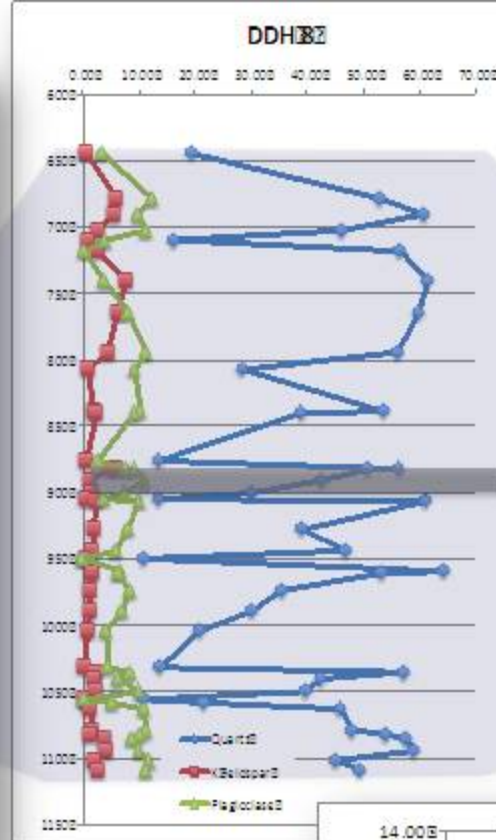
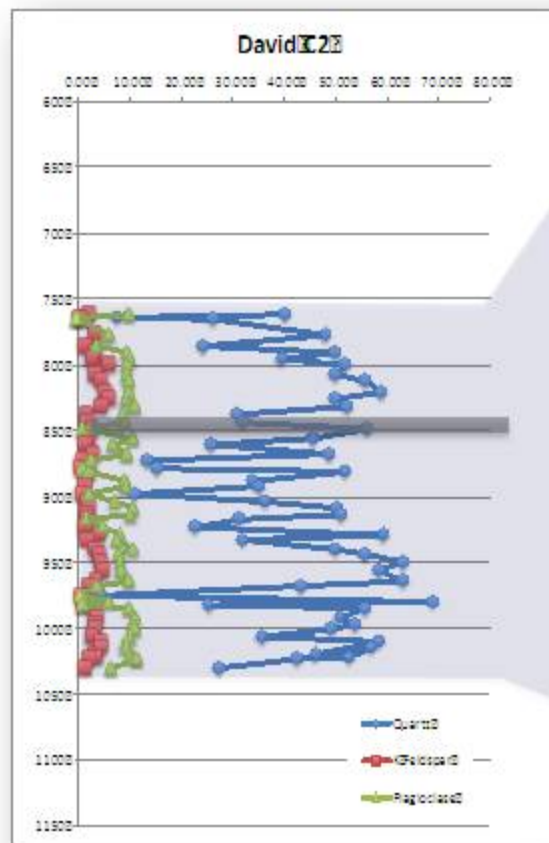


Pikeville Fm: Qz, K-Feld, Plag

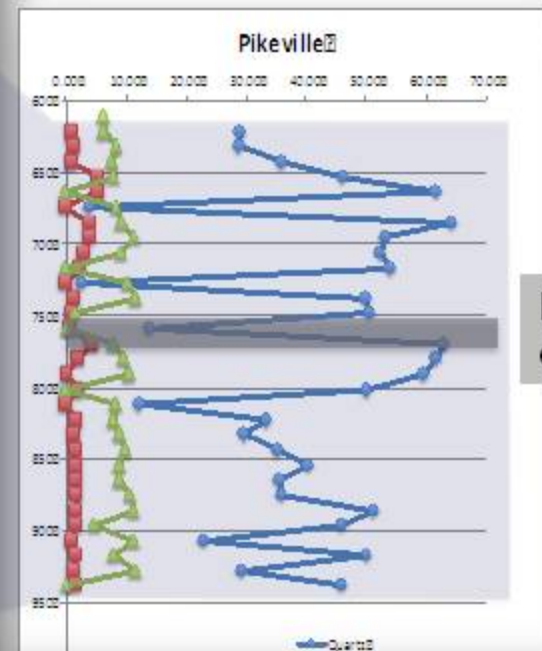


Elkorn
coals

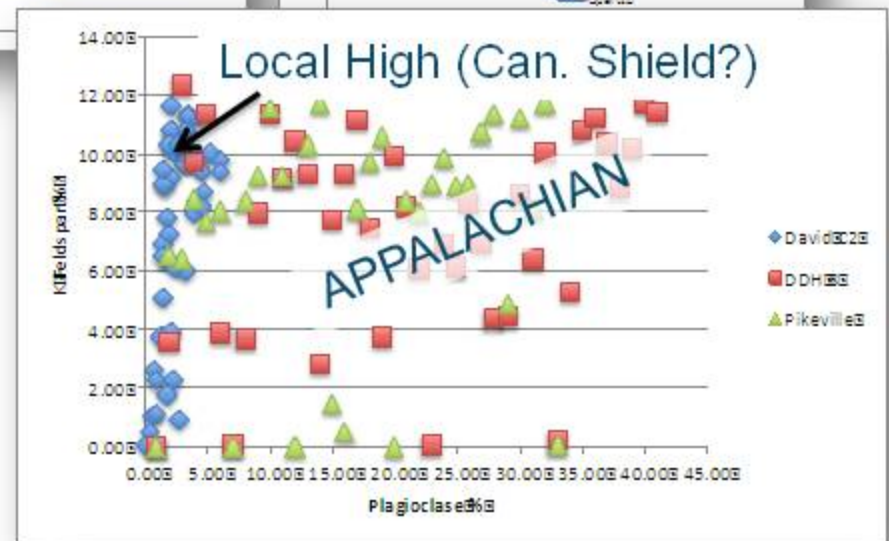


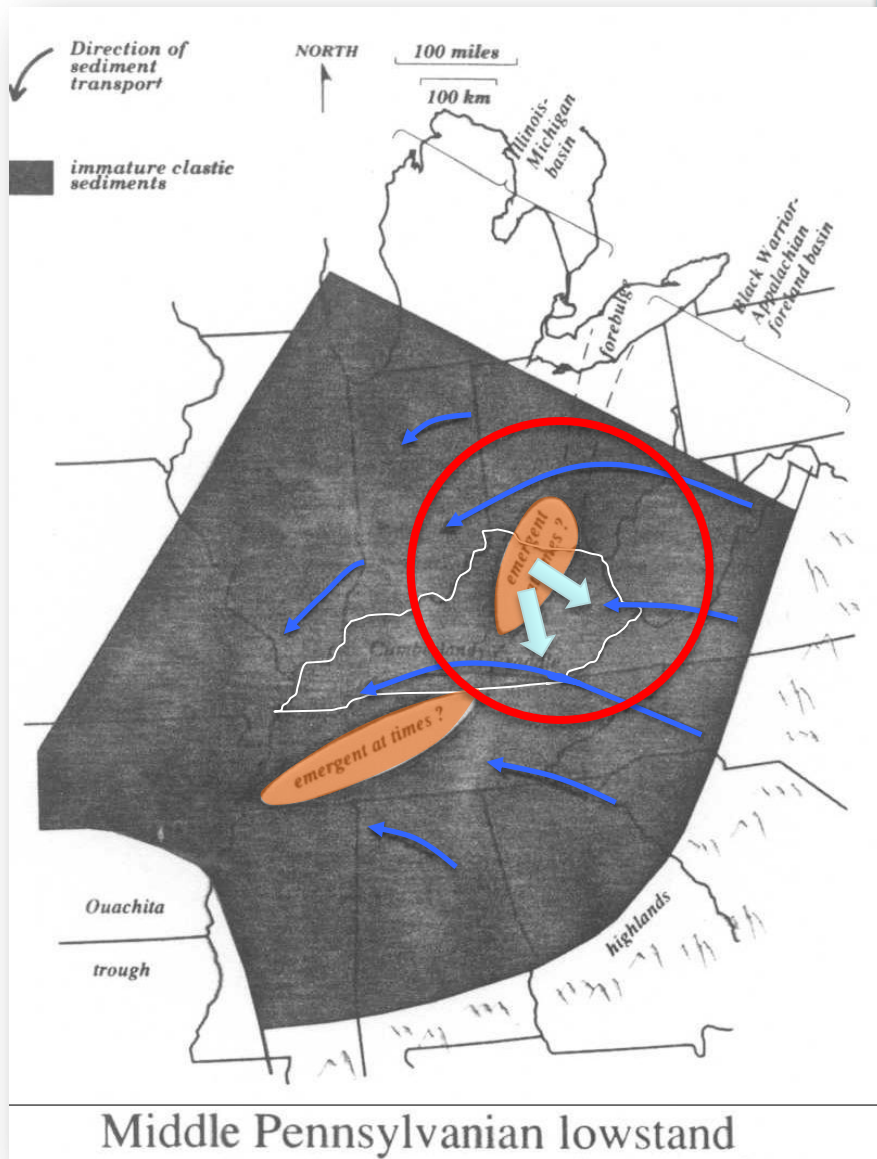


Pikeville Fm: Qz, K-Feld, Plag

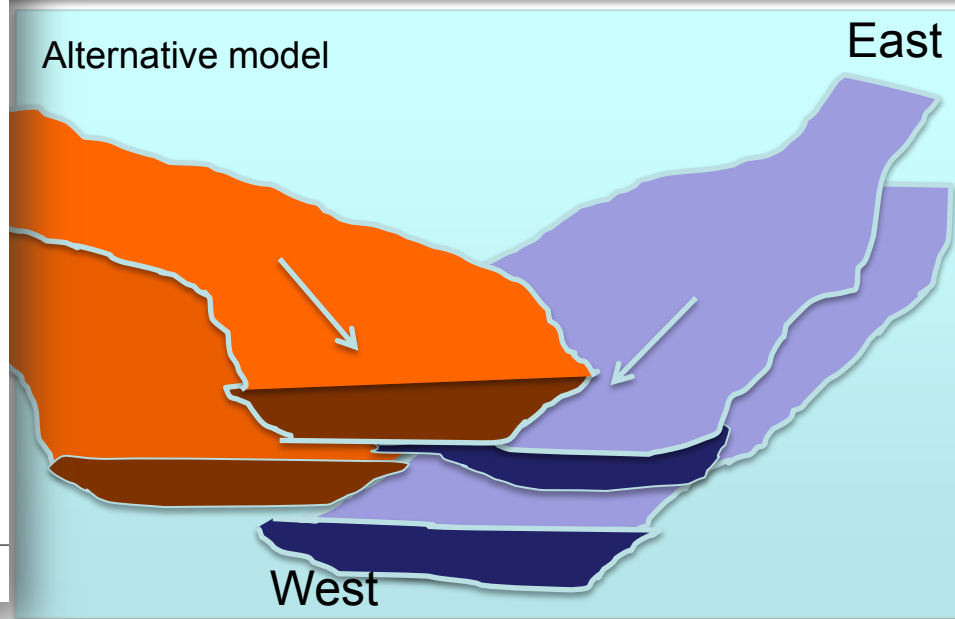
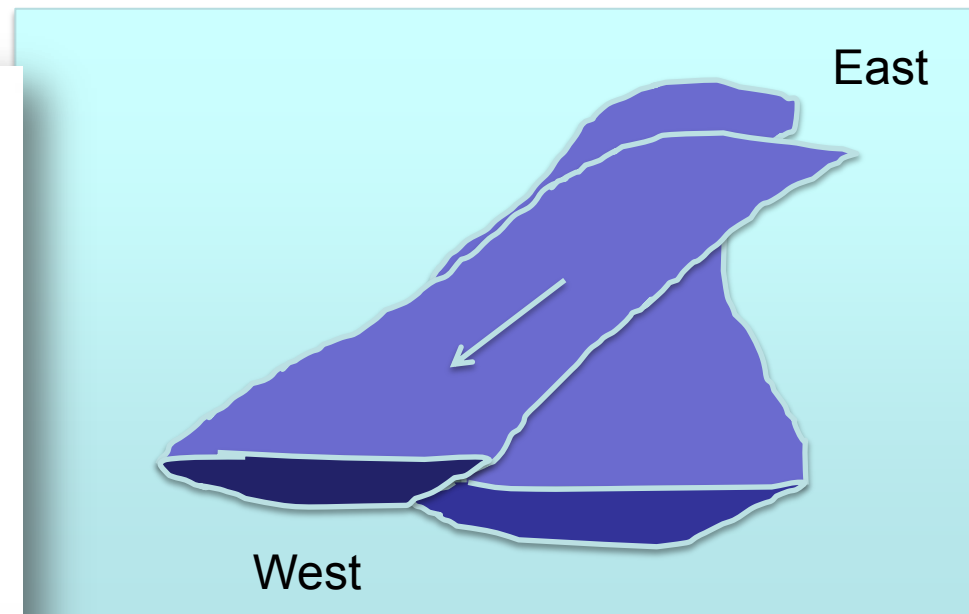


Elkorn
coals





Chesnut, 1993

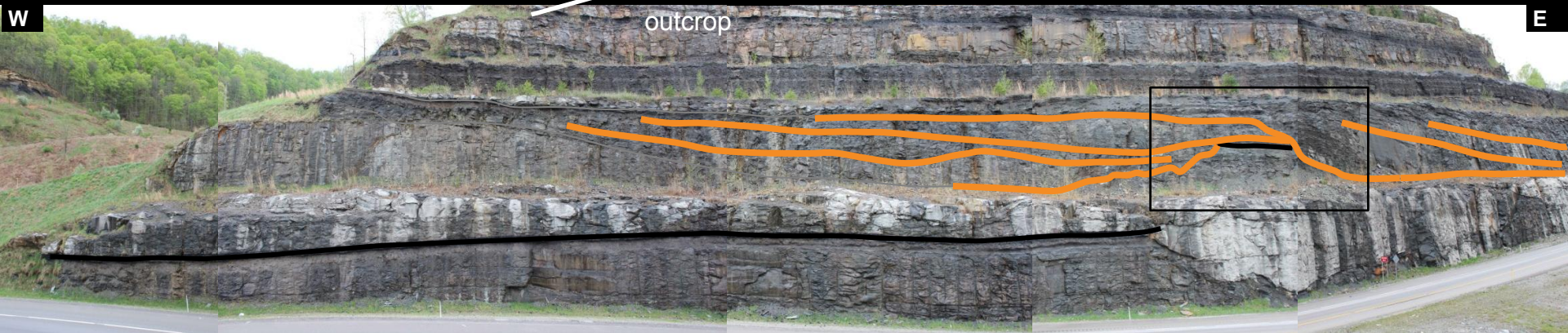


Sector model approach



Pikeville Formation - Harold Sst

W



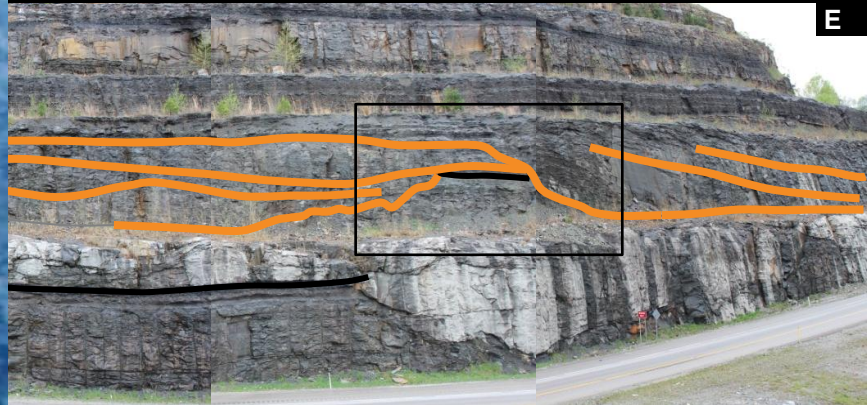
E



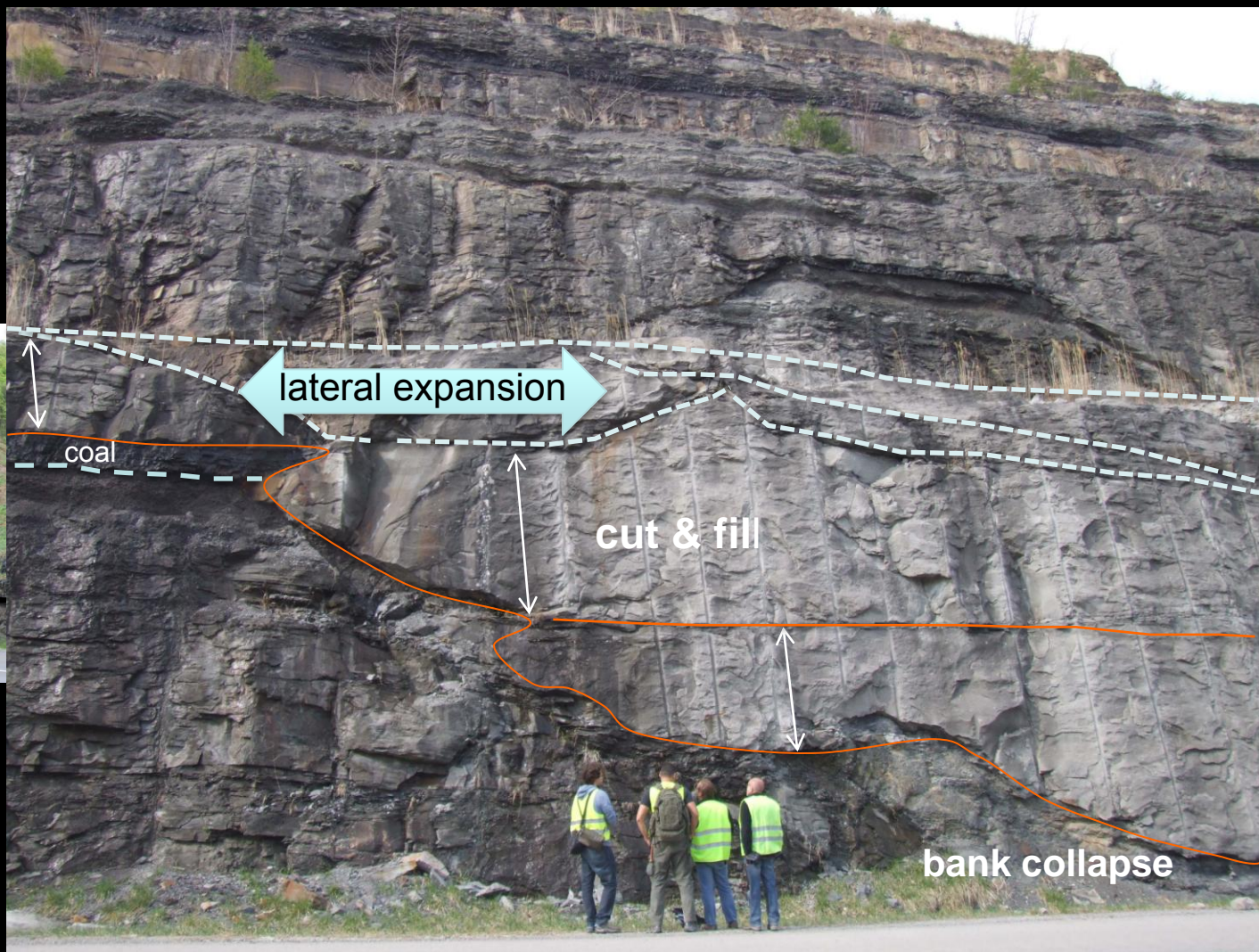
W



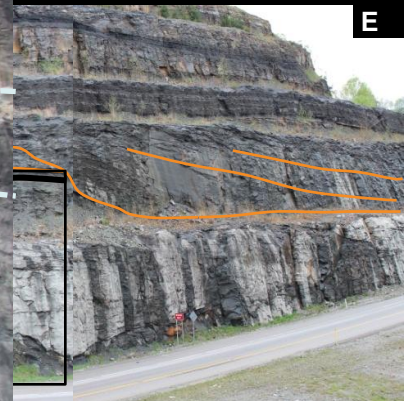
E

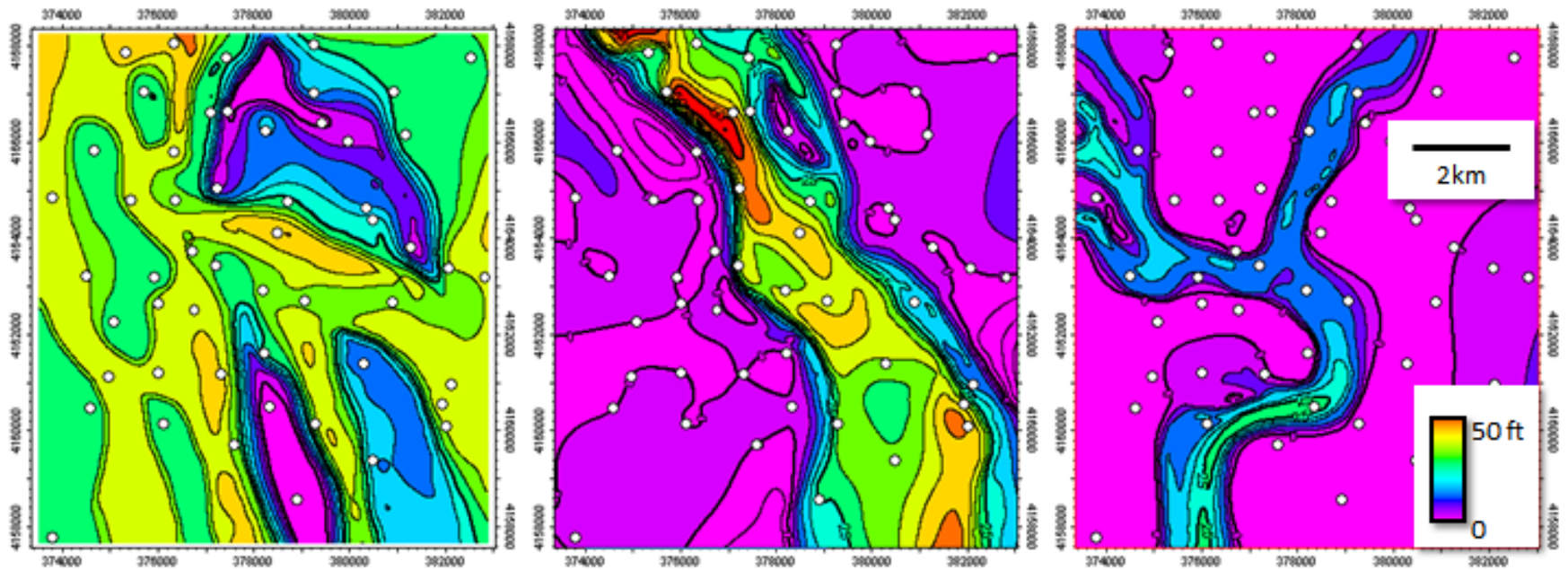


W



E





INCISED

AGGRADATIONAL

Complex erosively based networks NOT simple channel-forms.

Bodies 10's km wide

Networks in which the different "branches" develop more simple channel form geometries.

Bodies km's wide

Aggradational networks.

True distributary channel-levee systems.

Bodies 100's m to 2 km wide

Depositional-dip

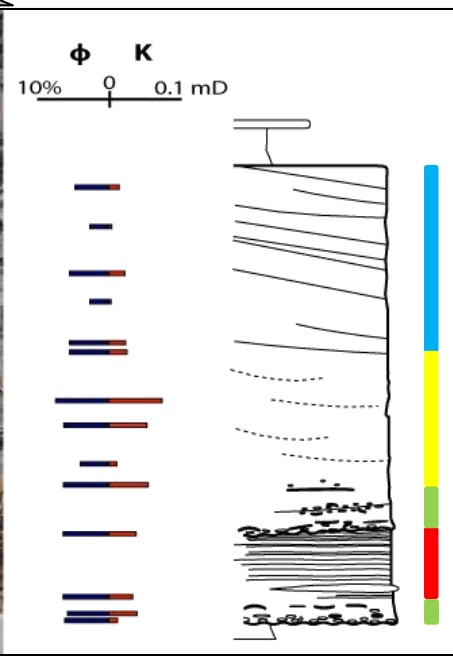
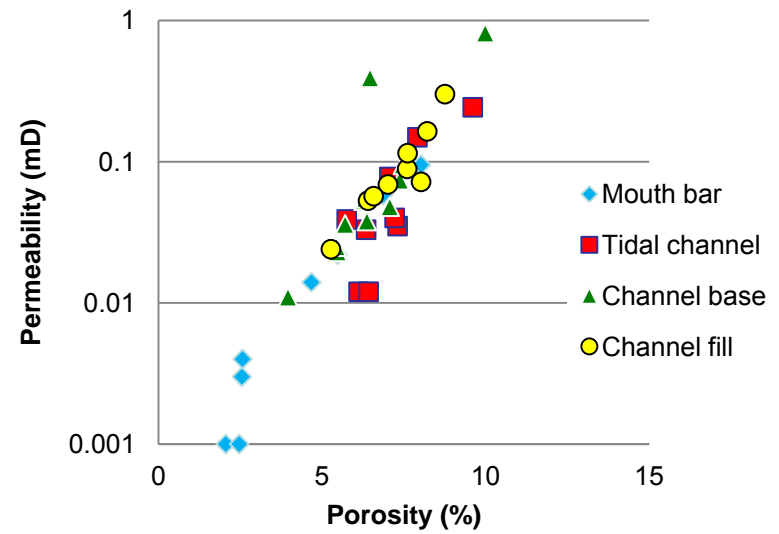
CHANNEL ARCHITECTURE

Williams and Davis in Moscardiello et al., 2013

LITHOFACIES CHARACTERIZATION



Reservoir Properties



Fluvial and tidally influenced channel fills have similar Phi-K distribution with higher variability for the latter. Mouth-bar deposits have the highest heterogeneity, while channel-base facies contain high-permeability streaks.

Conclusions

- Composition, architecture and properties of coal-bearing strata bear a complexity which can be unraveled by detailed outcrop studies and integration with subsurface data.
- Two-scale approach is key to predict both large- and small-scale architectural complexity.
 - Integration between sedimentology and petrography to develop conceptual geological model.
 - Detailed architecture of genetic elements in different sequential system tract (incision and aggradational)
- Eastern Kentucky outcrop data are used to build predictive subsurface geological models (UK, Russia).



Conclusions...



Thank You

