

2-D Basin Modeling of the WCSB across the Montney-Doig System: Implications for Hydrocarbon Migration Pathways and Unconventional Resources Potential*

Mathieu Ducros¹, Tristan Euzen², Roland Vially¹, and William Sassi¹

Search and Discovery Article #41526 (2015)**

Posted February 2, 2015

*Adapted from article published in AAPG European Region Newsletter, September, 2014. Appreciation is expressed to AAPG European Region Council, Keith Gerdes, President, their Editorial Board, Viki Wood, Chief Editor, William Sassi, Coordinator R&D Projects, and Jeremy Richardson, Office Director, AAPG European Region.

**AAPG European Regional Newsletter©2014. Serial rights given by author. For all other rights contact author directly.

¹IFP Energies nouvelles, direction Géosciences, France

²IFP Technologies (Canada) Inc., Canada

Introduction

For more than ten years, unconventional resources have been of great importance in the petroleum production of many hydrocarbon fields of North America and in Western Canada. The deep part of the Western Canada Sedimentary Basin (WCSB), where conventional reservoirs are already produced, is one of the potentially promising areas for unconventional resources. In this basin, the Montney Formation is currently the most active liquid rich unconventional play. The present study aims at giving a first overview of the complete petroleum system with a special emphasis on the Triassic Montney and Doig formations, through the modeling of a representative section across the WCSB using a basin and petroleum modeling software.

Construction of the WCSB Basin Model

The 2-D model of the WCSB consists of 49 stratigraphic intervals that span from the Granite Wash basement that underlies the Devonian Woodbend group to Holocene sediments. Interval boundaries were chosen based on changes in the rock properties from the petroleum system point of view (seal, reservoir rock, source rock...) with the modeling resolution in mind.

Three erosional episodes were taken into account in the model. The second one corresponds to the sub-Mannville unconformity ([Figure 1](#)) that we assumed to occur from 135Ma to 119Ma. Since this event occurred before the maximum burial depth was reached, limited effects are expected on thermal maturation. The Laramide Orogeny is the critical event that controls the petroleum system. Estimated thickness of eroded sediments associated with the Laramide Orogeny range from 2200m close to the Rocky Mountains to 800m near the Precambrian shield in Saskatchewan. Potential hydrocarbon sources are mainly the Devonian Duvernay Formation, the upper Devonian Exshaw Formation, the Triassic Montney and Doig formations, the carbonates of the Nordegg Member (Gordondale source rock) and the coals of the Mannville Group (Creaney and Allan, 1990; Higley et al., 2005).

Source rocks can retain hydrocarbon generated in situ thanks to mechanisms occurring during the hydrocarbon generation. Indeed, during organic matter maturation, porosity is created in the organic material (Romero-Sarmiento et al., 2013). Moreover, mechanisms of gas adsorption also contribute to hydrocarbon retention in source rocks. Thus, it is important to estimate hydrocarbon quantity that could be adsorbed in WCSB source rocks.

Results and Discussion

Simulation results show hydrocarbon accumulations in tight reservoirs of the Montney Formation. According to our model, hydrocarbons generated from the organic-rich part of the Montney Formation formed early in the basin history (between 88.5Ma and 57.8Ma) and did not migrate far up dip in the basin, mostly accumulating in the tight reservoirs closely associated with these source rocks. This is consistent with observations and interpretation proposed by Law (2002) and Ramirez et al. (2012) ([Figure 2](#)).

Early generated oil from the Gordondale and Doig source rocks could have migrated more to the east in the Baldonnel and Cadomin formations towards the underlying Charlie Lake and Montney formations and filled reservoirs along their subcrop edges. Results ([Figure 3](#)) show a very high contribution from the Gordondale source rock in the stratigraphic traps along the Charlie Lake and Montney subcrop edges.

According to our simulation results, there could be as much expelled hydrocarbons as retained hydrocarbons in the source rocks, including adsorbed gas and free hydrocarbons in organic and matrix porosity. This could consequently represent huge amounts of oil and gas still in the source rocks. Most promising targets for such plays would be associated with Duvernay, Doig and Gordondale source rocks.

Conclusions

According to our model, Montney and Doig source rocks could have started to generate hydrocarbons just before the erosion of the Minnes Group (Upper Jurassic). All source rocks reached their maximum transformation rate just before the last major erosion (early Palaeogene) which corresponds to their maximum burial. This period also corresponds to maximum overpressure in source rocks due to the peak of hydrocarbon generation. Analysis of both available pressure measurements and computed pressures suggest that present-day overpressures are entirely due to hydrocarbon accumulation, not to compaction disequilibrium.

Our model was able to reproduce the large diversity of plays that are found in the WCSB: tight reservoirs, shale plays, conventional reservoirs with conventional and biodegraded oils. It strengthens the hypothesis of long-distance (>100km) migration of hydrocarbons from Gordondale and Doig source rocks to Lower Cretaceous Mannville and Triassic Charlie Lake and Montney reservoirs at their subcrop edges, as proposed by Higley et al. (2009) and supported by Berbesi et al. (2012). The study of source-rock contributions to the modelled oil accumulations are consistent with geochemical analysis performed by Adams et al. (2012). In spite of a simplified representation of source-rock distribution and richness, our results accredit the idea that Gordondale and Doig source rocks are major contributors to the main oil accumulations in the WCSB. Hydrocarbons generated by the Exshaw and Duvernay source rocks could have migrated further east in the basin. Hydrocarbons generated in Mannville source rocks have a much more limited distance of migration and have mostly accumulated within the Mannville Group

itself. Montney-sourced hydrocarbons did not really migrate from their source rock due to very low permeabilities. They can be found mostly in turbidite reservoirs (gas) and fine-grained distal deposits within the Montney formation and in the underlying Belloy Fberbersiormation (mostly gas). According to our results, there is a very high resource potential associated with hydrocarbons retained in the Duvernay, Doig and Gordondale source rocks.

References Cited

Adams, J., S. Larter, B. Bennett, and Haiping Huang, 2012, Oil charge migration in the Peace River oil sands and surrounding region: CSPG/CSEG/CWLS GeoConvention 2012, Search and Discovery Article #90174 (2014). Website accessed January 23, 2015. http://www.searchanddiscovery.com/pdfz/abstracts/pdf/2014/90174cspg/abstracts/ndx_adams.pdf.html.

Berbesi, L.A., R. di Primio, Z. Anka, B. Horsfield, and D.K. Higley, 2012, Source rock contributions to the Lower Cretaceous oil accumulations in Alberta: A basin modeling study: AAPG Bulletin, v. 96/7, p. 1211-1234.

Creaney, S., and J. Allan, 1990, Hydrocarbon generation and migration in the Western Canadian Sedimentary Basin, *in* J. Brooks, editor, Classic Petroleum Provinces: Geological Society (London) Special Publication, v. 50, p. 189-202.

Higley, D.K., H. Mitchell, L.N.R. Roberts, and D.W. Steinshouer, 2005, 1-D/3-D Geological model of the Western Canada Sedimentary Basin: The Mountain Geologist (The Rocky Mountain Association of Geologists), v. 42/2, p. 53-65.

Higley, D.K., M.D. Lewan, L.N.R. Roberts, and M. Henry, 2009, Timing and petroleum sources for the Lower Cretaceous Mannville Group oil sands of northern Alberta based on 4D- modeling: AAPG Bulletin, v. 93, p. 203-213.

Law, B.E., 2002, Basin-centered gas systems: AAPG Bulletin, v. 86/11, p. 1891-1919.

Ramirez, J. F., and R. Aguilera, 2012, Updip water blockage in the Nikanassin basin centered gas accumulation, Western Canada Sedimentary Basin: SPE 162774.

Romero-Sarmiento, M.F., M. Ducros, B. Carpentier, F. Lorant, M.C. Cacas, S. Pegaz-Fiornet, S. Wolf, S. Rohais, and I. Moretti, 2013, Quantitative evaluation of TOC, organic porosity and gas retention distribution in a gas shale play using petroleum system modelling: Application to the Mississippian Barnett Shale. Marine and Petroleum Geology, v. 45, p. 315-330.

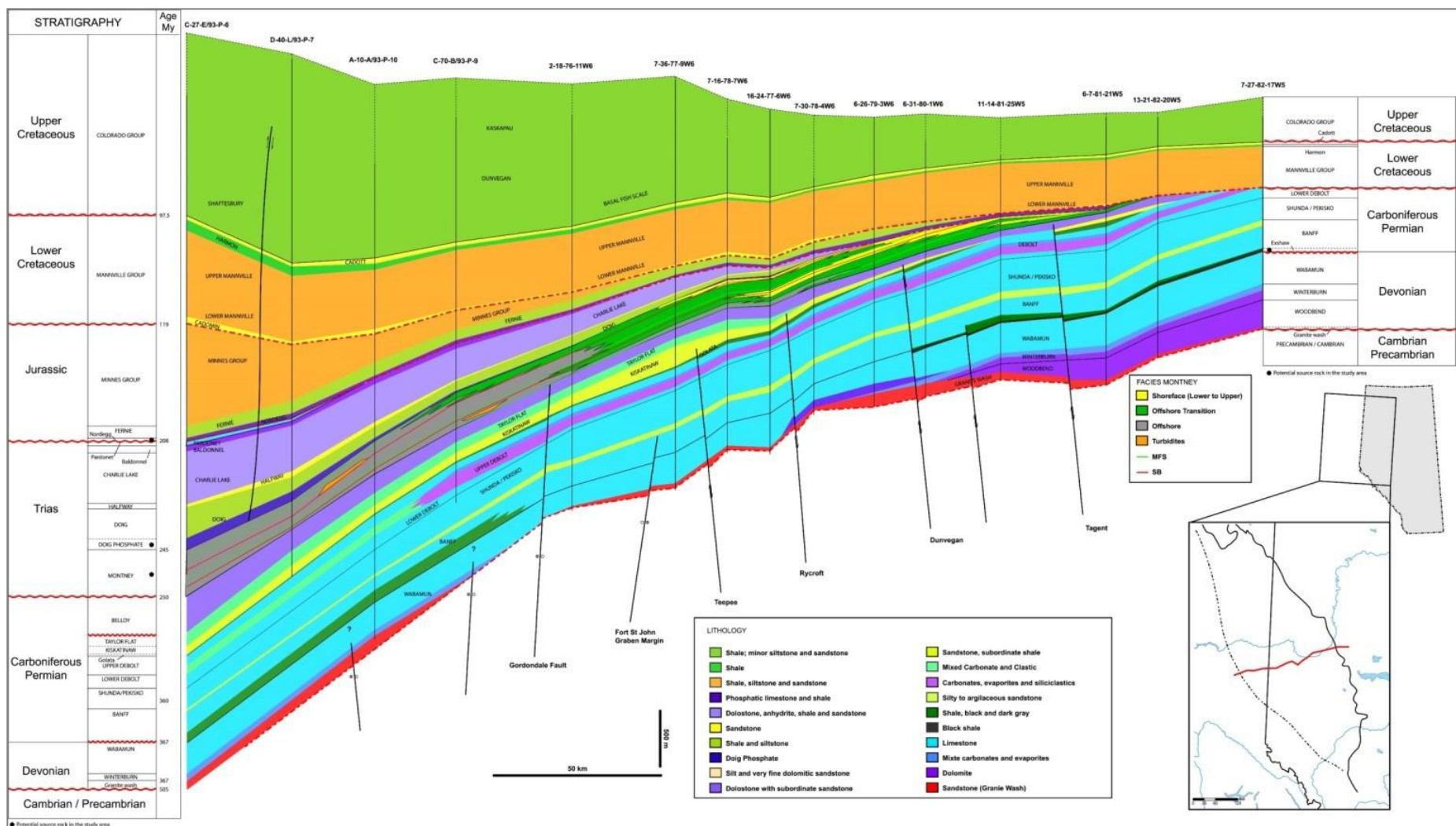


Figure 1. Stratigraphic cross section, Western Canada Sedimentary Basin.

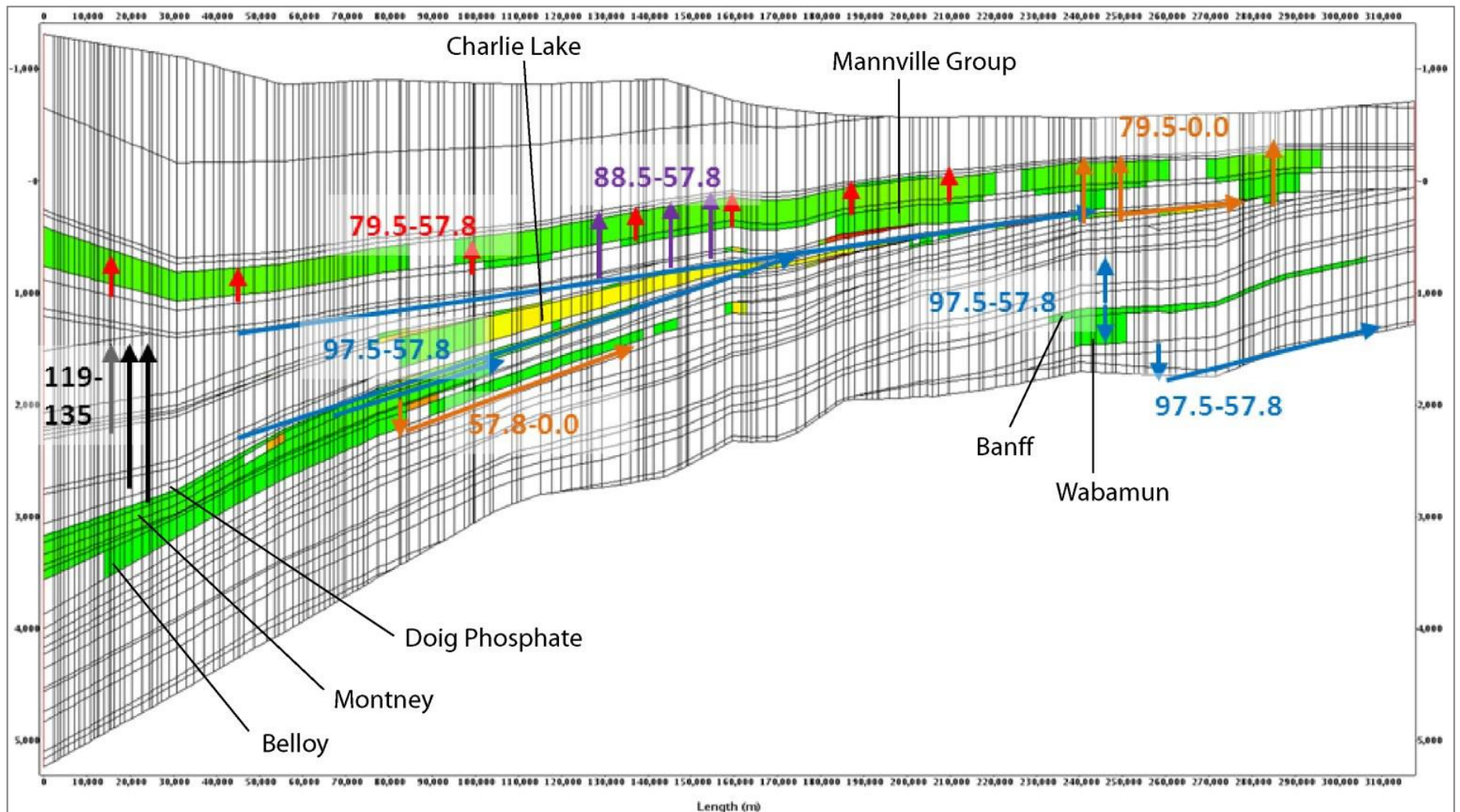


Figure 2. Migration pathways. Arrows represent the direction of hydrocarbon migration with the corresponding ages of migration. Hydrocarbons generated in the Montney Formation mostly migrated laterally towards tight reservoirs of the Montney Formation or in reservoirs of the underlying Belloy Formation. Hydrocarbons generated early in the Gordondale and Doig formations migrated vertically (135Ma to 119Ma). Then migration was mostly lateral towards the eastern of the basin (97.5Ma to 57.8Ma). Vertical migration from Cadomin, Triassic reservoirs east of the Doig subcrop to Upper Mannville reservoirs occurred from 79.5Ma to present day.

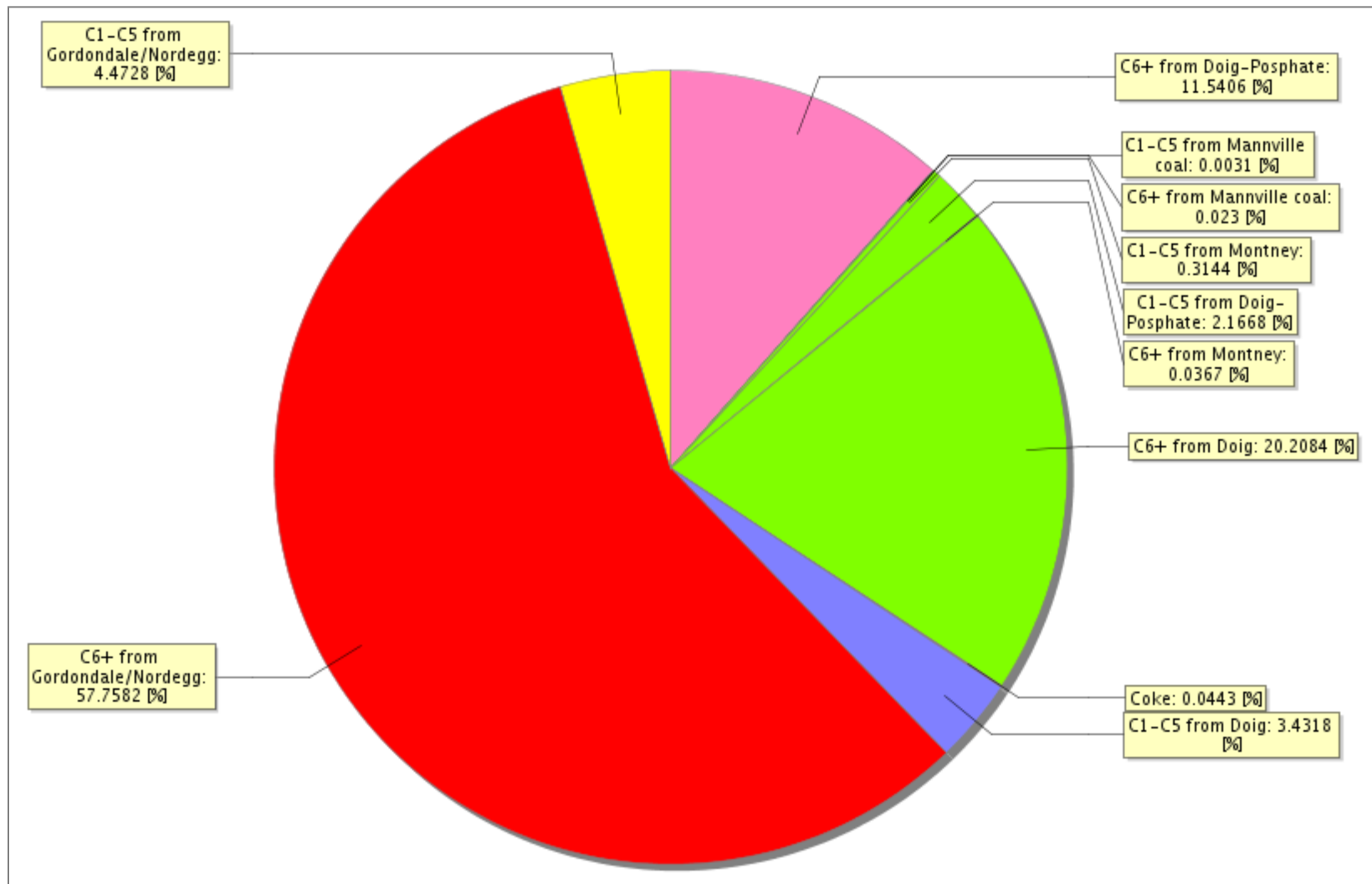


Figure 3. Origin of hydrocarbons of Charlie Lake and Montney formations along their subcrop edge according to the petroleum system model.