

# **BOEM Pacific Region's Offshore Renewable Energy Program\***

**Tracy Logan<sup>1</sup>**

Search and Discovery Article #80449 (2015)\*\*

Posted June 22, 2015

\*Adapted from oral presentation given at Pacific Section AAPG, SEG and SEPM Joint Technical Conference, Oxnard, California, May 3-5, 2015

\*\*Datapages © 2015 Serial rights given by author. For all other rights contact author directly.

<sup>1</sup>Bureau of Ocean Energy Management, Oxnard, CA, USA ([tracy.logan@boem.gov](mailto:tracy.logan@boem.gov))

## **Abstract**

The Bureau of Ocean Energy Management, an agency in the Department of the Interior, oversees development of the nation's energy and mineral resources in the Federal waters offshore the United States known as the Outer Continental Shelf (OCS). In 2005, BOEM was granted new authority by the Energy Policy Act to issue leases, easements, and rights-of-way for renewable energy projects, cables transporting renewable energy, and the alternate use of existing facilities on the OCS. BOEM established a robust offshore renewable energy program, standing up Intergovernmental Renewable Energy Task Forces in thirteen states and working closely with stakeholders to insure the safe development and stewardship of the Nation's offshore renewable energy resources. Based in Camarillo, California, the BOEM Pacific OCS Region covers California, Oregon, Washington, and Hawaii. This presentation will provide an overview of activities occurring both nationally and within the Pacific Region, an overview of BOEM's four-step leasing process, and information on the Pacific Region's unique geologic and bathymetric characteristics and how they are being addressed by various types of offshore renewable energy technologies.

# **BOEM Pacific Region's Offshore Renewable Energy Program**

**Tracy Logan**

Renewable Energy Specialist  
Bureau of Ocean Energy Management  
Pacific OCS Region  
May 5, 2015 • Oxnard, California



## **Bureau within the Department of the Interior (DOI)**

- Oversees development of nation's energy and mineral resources on the Outer Continental Shelf (OCS)

## **OCS Lands Act of 1953 as amended, including amendments per Energy Policy Act of 2005**

- Oil/gas, marine minerals (e.g., sand and gravel)
- Renewable energy (leases, easements, rights-of-way)
- Alternate use of OCS facilities



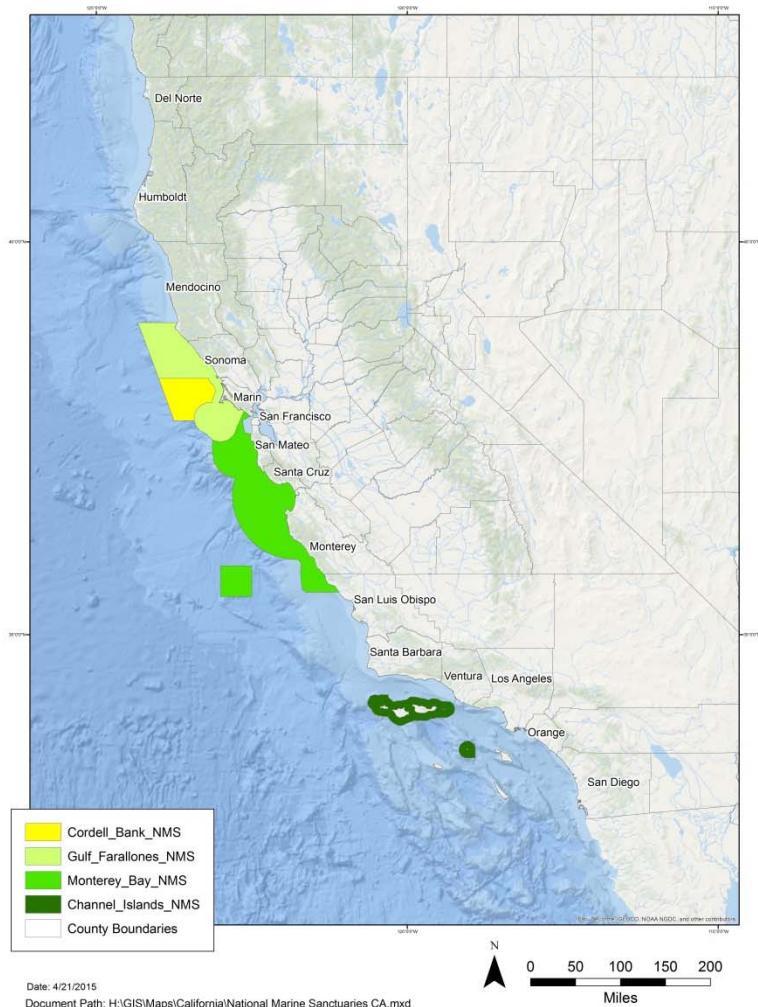
**OCS jurisdictional boundary typically 3-200 nautical miles from coastline**

**BOEM has no jurisdiction within:**

- National Park System
- National Wildlife Refuge System
- National Marine Sanctuary System
- Any National Monument



## National Marine Sanctuaries in California





## **California**

- Interest in projects, but no formal lease requests

## **Oregon (Task Force established in 2010)**

- WindFloat Pacific
- Pacific Marine Energy Center-South Energy Test Site (PMEC-SETS)

## **Washington**

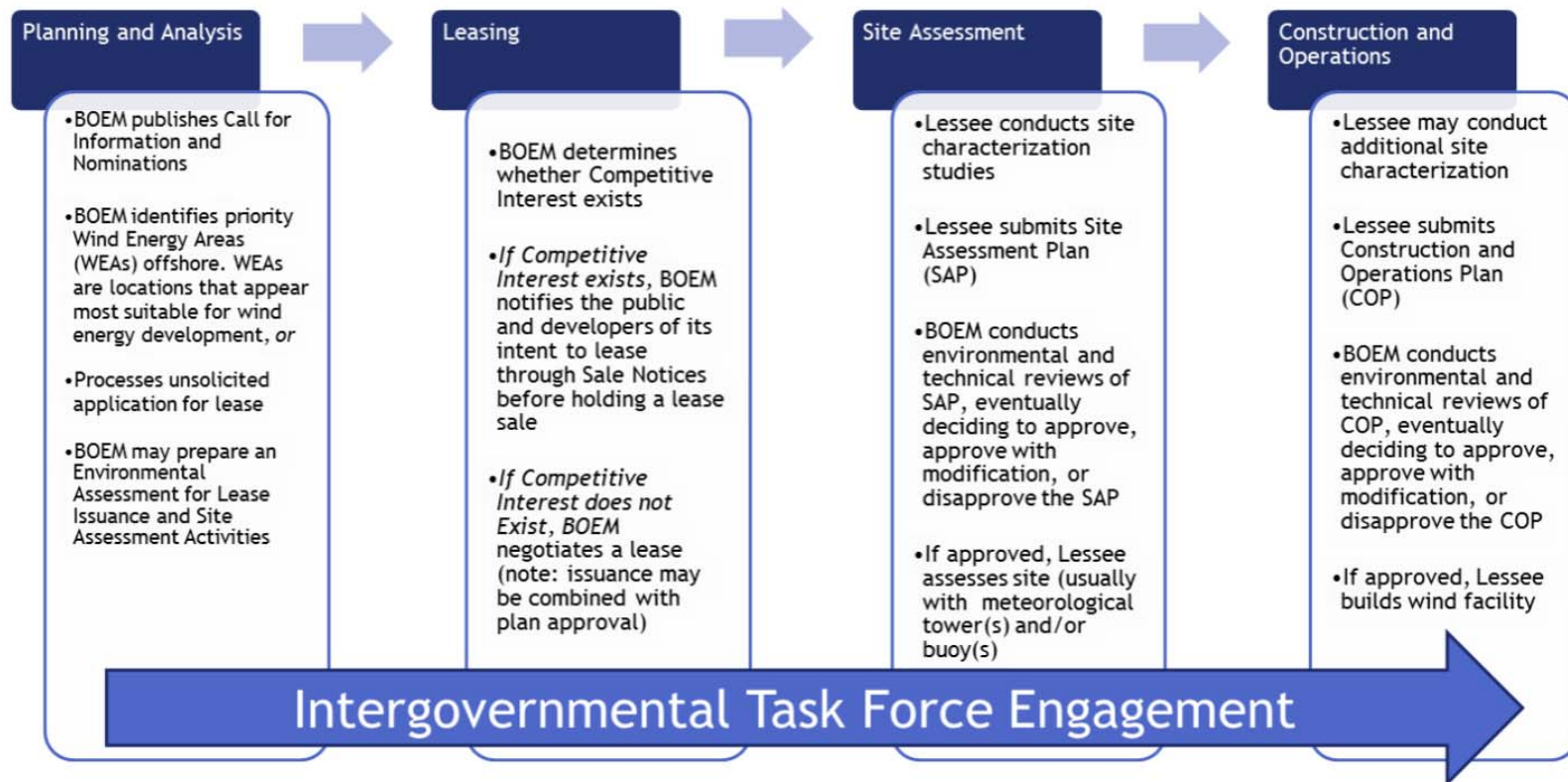
- Little interest to date

## **Hawaii (Task Force established in 2011)**

- Development is prospective, two unsolicited lease requests received in Jan 2015



# BOEM's 4-Step Process



**Wind**



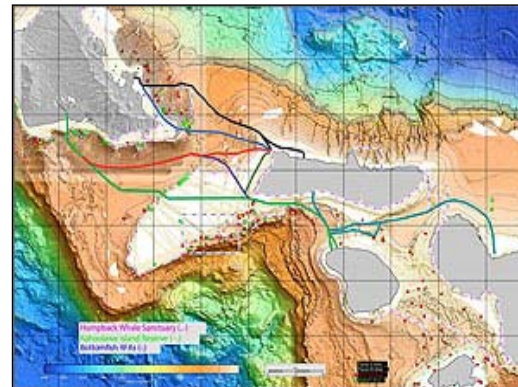
**Ocean Current\***



**Wave\***



**Transmission**



*\*BOEM is responsible for leasing areas of the OCS for ocean current and wave energy projects, and FERC regulates and issues licenses for construction and operation.*





## Principle Power, Inc.

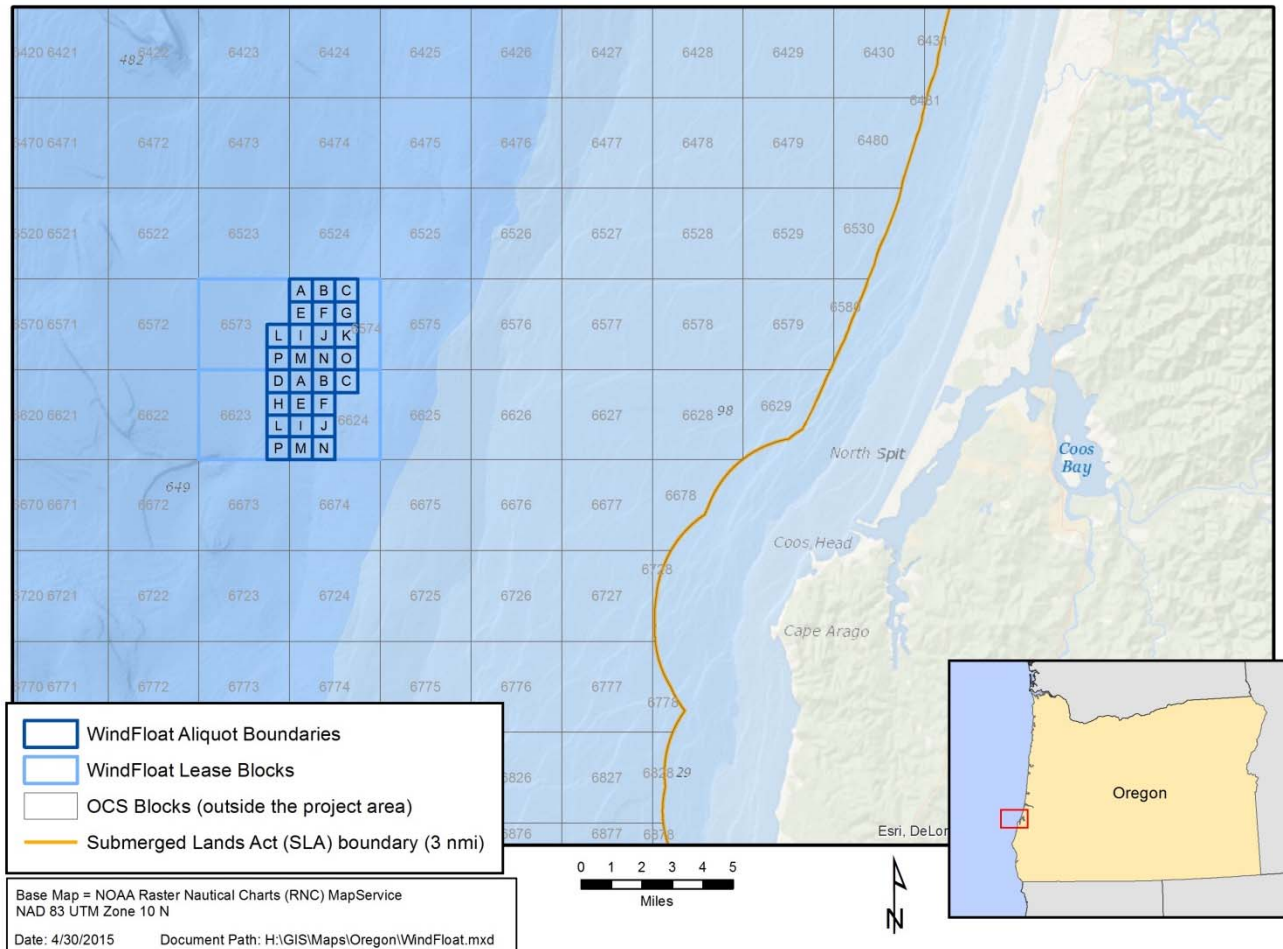
### Project Highlights:

- 5 turbines, 6 MW each
- Floating foundation in > 1,200 feet water depth
- ~16 nautical miles offshore Coos Bay, Oregon
- Department of Energy (DOE) awarded funding for project to demonstrate technology
- Proposed to be operational by the end of 2017



# WindFloat Pacific Project

## WindFloat Pacific Project Proposed Area

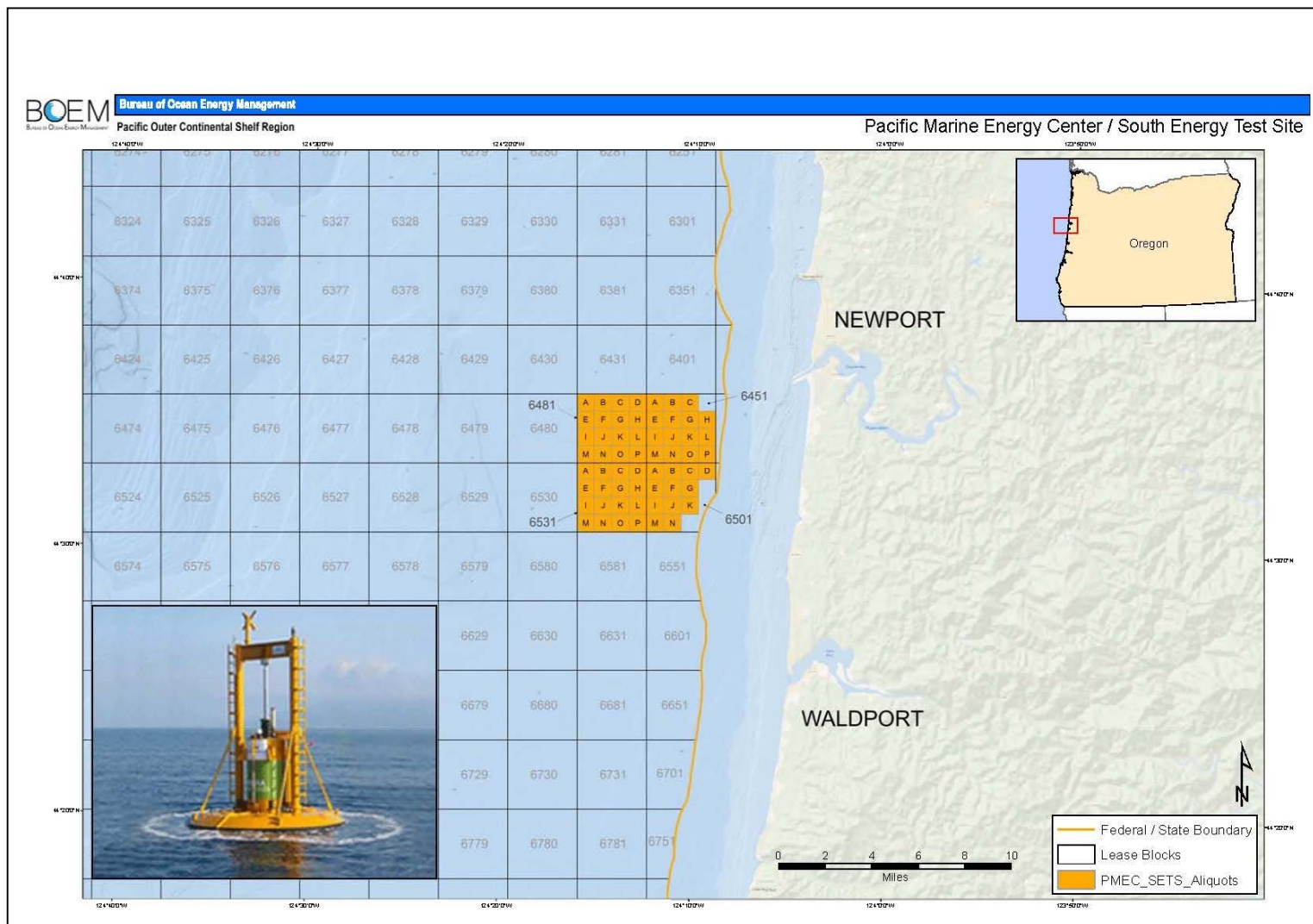


## Project Highlights:

- 4 berths, 20 MW capacity
- Marine hydrokinetic research and testing facility
- Each test berth could test single or multiple devices
- Proposed to be operational in 2017
- ~5 nautical miles offshore Newport, Oregon









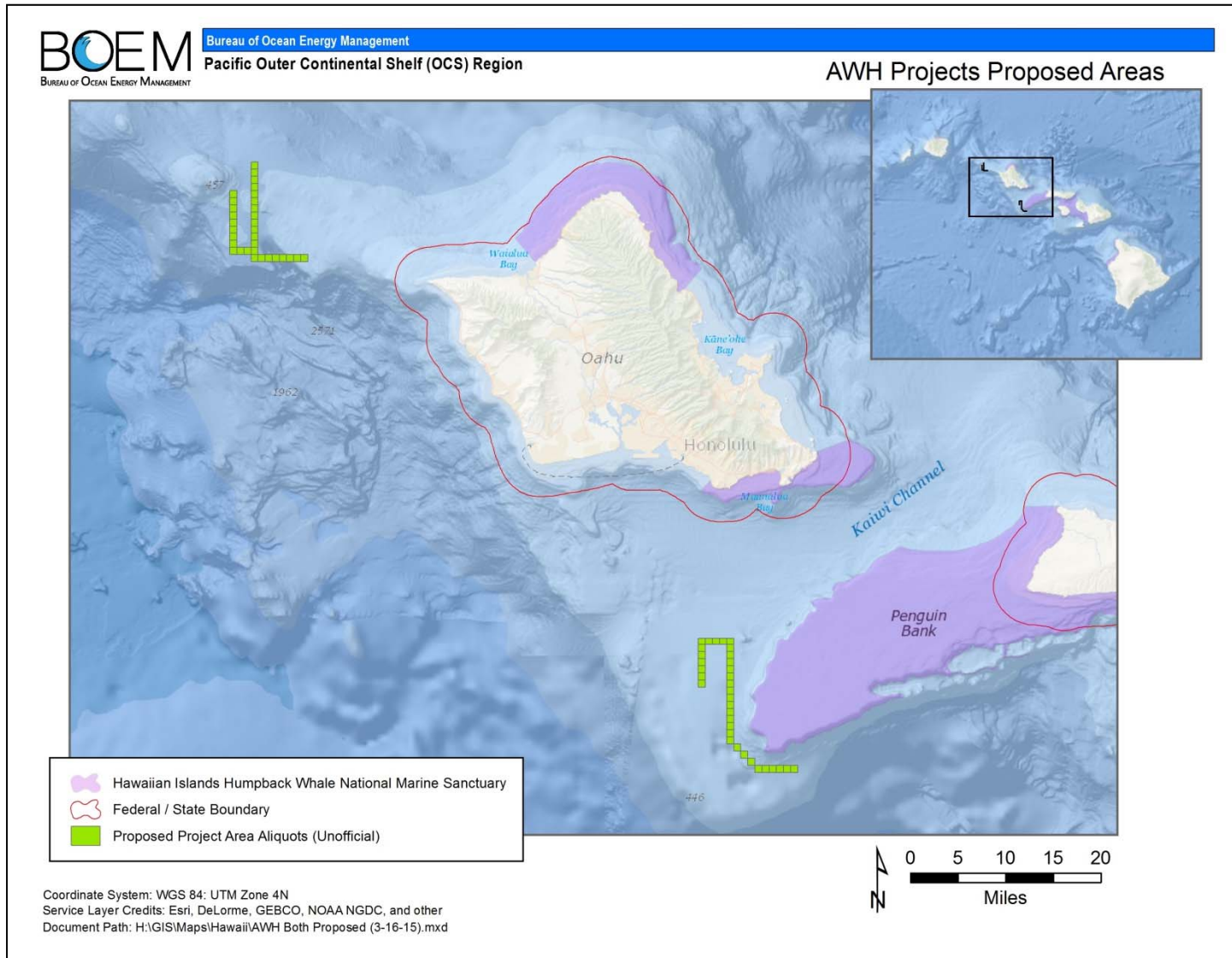
## AW Hawaii Wind, LLC

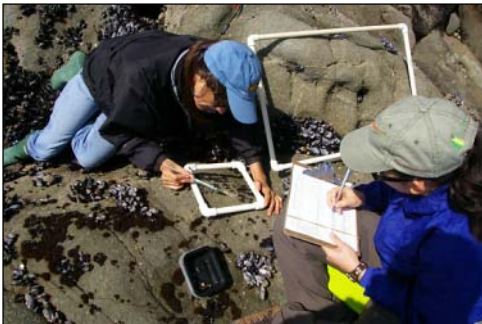
### Project Highlights:

- 2 unsolicited lease requests
- Oahu NW Project ~12 miles NW of Kaena Point
- Oahu South Project ~17 miles South of Pearl Harbor
- Each project proposes 408 MW of renewable energy generated by 51 floating 8 MW wind turbines
- Next steps: Task Force Meeting and Request for Interest



# Hawaii Unsolicited Lease Requests





- Cultural Anthropologist/Archaeologist
- Physical Scientist/Air Quality Specialist
- Marine Biologists/Ecologists
- Oceanographer/Water Quality Specialist
- Marine Mammal Specialist
- Invertebrate Zoologist/Benthic Specialist
- Avian Specialist
- Fish/Fisheries Specialist
- Geologist
- Social Scientist
- Geophysicist
- Petroleum Engineer

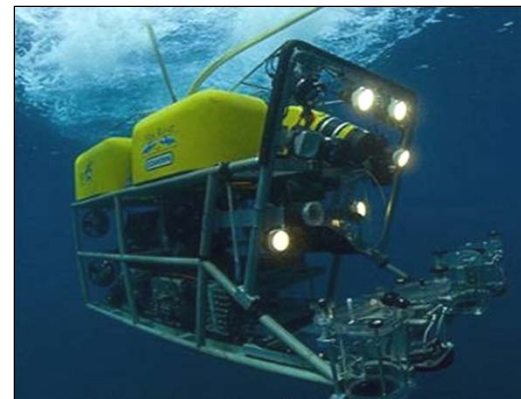




## Perspective on Pacific Region Studies, 1973-2014

~ 310 studies completed at > \$142 M

35 Ongoing Studies	~ \$20 M
20 renewable energy	~ \$13 M
9 conventional energy	~ \$ 3 M
6 both energy programs	~ \$ 4 M



[www.boem.gov/Pacific-Studies/](http://www.boem.gov/Pacific-Studies/)





## Pacific OCS Region Contact Information

### Tracy Logan

Renewable Energy Specialist  
Office of Strategic Resources  
Bureau of Ocean Energy Management  
Pacific OCS Region  
805-384-6315

[Tracy.Logan@boem.gov](mailto:Tracy.Logan@boem.gov)

For more information, please visit:

[www.boem.gov](http://www.boem.gov)

