

Selected Core from the Albert Formation (Mississippian), Moncton Basin, Southern New Brunswick*

Dave Keighley¹ and Clint St. Peter²

Search and Discovery Article #10729 (2015)

Posted March 16, 2015

*Adapted from extended abstract prepared in conjunction with a presentation given at CSPG/CSEG 2006 GeoConvention, Calgary, AB, Canada, May 15-16, 2006, CSPG/CSEG/Datapages © 2015

¹University of New Brunswick, Fredericton, New Brunswick, Canada (keig@unb.ca)

²Hugh John Flemming Centre, Fredericton, New Brunswick, Canada

Abstract

The Moncton Basin is located in the southeastern part of New Brunswick ([Figure 1](#)) and has a long history of petroleum activity. In the area ~25 km south of Moncton there has been mining of solid bitumen, Albertite, at Albert Mines (1850's); minor and intermittent production of oil/gas at Dover and Saint-Joseph (1859 to 1905); and oil and gas production at Stoney Creek (1911 to 1991 - gas was piped to the city for ~80 years). Stoney Creek gas is sweet, but wet, and the oil (total in place $\sim 2.1 \times 10^6 \text{ m}^3$ with <5% recovered to date) is paraffinic with a pour point of over 7°C (45°F). Numerous appraisals of the oil shale in the area (e.g. Shell Albert Mines #4 borehole) have also been undertaken periodically. In 2000, focus shifted 80 km west, where the McCully Gas Field (~1 TCF in place) was discovered, east of Sussex, by Corridor Resources Inc. and Potash Corporation of Saskatchewan (PCS). The A-67 discovery well (initial flow: 2.5 mcf per day), and adjacent P-66 well currently produce gas for the PCS mill, but a link to the M&NE pipeline ([Figure 1](#)) is planned to go into operation in late 2006. Approximately 17 bcf (proven, ~120 bcf P2) remains in this production area (8% of the total joint venture area). Beyond the joint venture area, 8 km east of the currently producing wells, Well H-28 (EOG-Corridor) also intersected a higher pressure regime below 3 km depth.

General Lithostratigraphy

Almost all rocks in SE New Brunswick formed during the late Neoproterozoic to Paleozoic ([Figure 2](#)). Volcanic, metamorphic, and metasedimentary rocks of early Devonian age and older are considered part of the 'basement' complexes. Strata of Late Devonian to Permian age, summarized most recently by St. Peter (1993), but currently being re-evaluated (e.g. St. Peter 2003), comprise 5 unconformity-bound sequences ([Figure 3](#)). It is the lowermost (Famennian to Tournaisian) succession that is of most interest to explorationists, comprising red-bed strata that interfinger and enclose a unit of mostly grey colored strata. The basal red-bed unit (Memramcook Formation) consists mostly of conglomerate, together with gritstone, sandstone, and mudstone that is more common upsection. It is interpreted as an alluvial fan - braid-plain - floodplain succession. The grey-bed unit (Albert Formation) is mostly of shale, but includes oil shale, sandstone, gritstone, conglomerate, and limestone of interpreted lacustrine and fluvial-(lacustrine) deltaic origin. It is host to the source and reservoir rocks of the McCully gas field, and the old Stoney Creek Field. The medial Frederick Brook Member contains the main oil shale; reservoirs are in the sandstone of the

underlying Dawson Settlement Member and overlying Hiram Brook Member. Red-beds that interfinger and conformably overlie the Albert Formation are now assigned to the Bloomfield Formation. The formations of this lowermost sequence are classified as the Horton Group.

Overlying cycles consist of the Sussex Group (red-bed conglomerate, red shale and sandstone, and localized grey to red shale and evaporite of interpreted hyper-alkaline lake basin settings), the Windsor and Mabou groups (red-bed conglomerate and mudstone with several interfingering carbonate-evaporite cycles interpreted as marine transgressions of the 'Windsor' sea), the Cumberland Group (grey- and red-bed sandstone and mudstone deposited in a fluvial-floodplain setting), and the Pictou Group (red- and minor grey-bed sandstone, mudstone and coal of interpreted fluvial-floodplain-mire origin).

Structural Setting

The basement complex was formed by Early Devonian time from the successive accretion of various terranes to the margins of Laurentia and Baltica as they converged and collided (Acadian Orogeny). Transpressional and transtensional motions, related to juxtaposition of the Meguma terrane (Gondwana) continued through the Late Devonian and into the Carboniferous. The stratigraphic succession of this time consists of regionally extensive, but relatively thin (typically less than 250 m in New Brunswick) deposits of Pennsylvanian-Permian age overlying a thick, but more localized succession of Late Devonian and Mississippian age strata. This latter succession is mapped along numerous linear belts in southern New Brunswick and northern Nova Scotia ([Figure 2](#)). These belts follow the regional southwest-northeast fabric developed in the earlier Paleozoic rocks as a result of collisional tectonics.

The nature and distribution of these linear Devonian-Permian belts has been best (but incompletely) explained by Bradley (1982) who related the features of intracontinental transform settings to the region. Following continental collision in the Devonian, the northern Appalachians were influenced by predominantly right-lateral strike-slip along the main transforms ([Figure 1](#)). Adjacent to the boundary were contemporaneous areas of periodic transtension, forming pull-apart basins, and periodic transpression producing depositional unconformities and deformation. These smaller scale depositional basins (e.g. Moncton Basin and Cumberland Basin) were likely separate entities for most of Late Devonian and (early to mid) Mississippian times. Transtension was accompanied by increased heat flow, locally with alkaline to tholeiitic volcanism. As movement along the main transform diminished, the dropping of isotherms caused periodic regional subsidence and the production of an enlarged sedimentary basin (the Pennsylvanian-Permian 'Greater Maritimes Basin'), which buried most of the rapidly sedimented pull-aparts with a blanket of more mature, more slowly deposited sediment (collectively, the Devonian-Permian basins are included in the 'Maritimes Basin Complex').

Late Devonian-Mississippian strata of southern New Brunswick are mostly preserved in the 200 km long, northeast trending, wedge-shaped Moncton Basin, and in the adjacent Sackville Basin to the southeast and Cocagne 'Graben' to the northeast. The presently defined boundaries of these 'basins', being marked by faults that also delineate the aforementioned Neoproterozoic-Paleozoic terranes, are not necessarily the location of the basin-bounding uplifts during sedimentation. The nature and timing of activity on these faults is only now being determined. For example (Park et al. 2006), the Indian Mountain deformed zone originated as a basement high 'separating' the Tournaisian Moncton and Cocagne basins, or at least it did so by the onset of deposition of the Sussex Group. In post-Sussex Group time the zone evolved into a fold-thrust belt, with subsequent deformation related to ENE-trending dextral strike-slip faults. In contrast, work south of Stoney Creek has resolved

a late Tournaisian deformation event (equivalent to upper Sussex Group deposition) with the architecture of a fold-thrust belt (Park and St. Peter 2005). In the McCully area, two basin inversion events are documented within the Tournaisian, one at the end of the Horton Group, the other at the end of the Sussex Group (Wilson 2003). A later (end Mississippian) event folds Windsor Group evaporites and is associated with reverse/thrust faulting that likely includes allochthonous basement blocks (Keighley and Gemmell 2005).

Albert Formation Sedimentology and Lithofacies Models

The Albert Formation comprises a wide variety of lithofacies that have long been considered indicative of a lacustrine basin: alluvial fan and fan delta conglomerates, fluvio-deltaic sandstone and pebbly sandstone, forest and floodplain palaeosols, sheetflood sand- and siltstone, carbonate (algal) and clastic mudflat, lake-shoreface carbonate and sandstone, and deep lake, variably organic and dolomitic mudstone-shale - see Keighley and Brown (2005) for references and brief comment regarding potential marine incursions. Most of the above-named lithofacies are interpreted from the core from Shell Albert Mines #4 and EOG-Corridor McCully H-28 ([Figure 4](#), [Figure 5](#), and [Figure 6](#)), which are on display.

Three recurring lacustrine lithofacies associations have long been modelled for all lake basins at the scale of meters to hundreds of meters. Olsen (1990) explained their occurrence as reflecting the interplay of basin morphology, climate, and time. Collectively, these factors influenced the magnitude and frequency of lake-level change. Predominantly open lakes over time result in fluvial-lacustrine facies associations, predominantly closed lakes over time produce evaporative facies associations, and lakes that fluctuated between open and closed produce profundal facies associations ([Figure 7](#)). Carroll and Bohacs's (1999) equivalent terms are 'underfilled', 'overfilled', and 'balanced fill' successions. On a similarly broad scale, a typical lithofacies succession for all long-lived (>M.yr), actively subsiding, intermontane basins has been identified ([Figure 8](#); Lambiase 1990; Keighley et al. 2003). During the initial (stage 1) 'growth phase' of the basin, accommodation space develops at a higher rate than supplied sediment can infill this volume, and predominantly coarse grained alluvial deposits initially infill major topographic lows until the basin develops internal drainage. At this point (stage 2), localized alluvial deposits may continue to form around the basin margin, but fine grained lacustrine deposits tend to dominate in the basin center. Eventually, due to a reduction in tectonism, or because of increasing sediment supply, there is a net reduction in accommodation. Where a deep basin is present, thick delta front and delta top sediment packages may develop (stage 3) as it infills. As the deltas extend across the infilling basin, typically in an axial direction, floodplain and fluvial deposition expands landward of the deltas (stage 4). On a temporal scale, basin fill may be relatively rapid compared to the period of basin growth.

With respect to the Albert Formation, the core from Albert Mines (Dawson Settlement Member, [Figure 5](#)) most likely represents stage 1 - early stage 2, since the main oil shale unit overlies this interval. As such, sand bodies are likely locally sourced and mineralogically immature. Core from McCully (Hiram Brook Member, [Figure 6](#)) lies above the main oil shale interval, and likely represents part of the infilling (stage 3) phase of the lake. The cored sand bodies are considered part of an axial drainage system, sourced external to the basin and thus finer grained and mineralogically more mature. Preservation of shoaling upward successions and thick successions of often slumped mudstone/oil shale in outcrop and core (e.g. Keighley and Mohan 2006) suggests fairly continuous and deep lakes with persistence of a significant subaqueous gradient adjacent to the footwall block. Palaeocurrents indicate mostly an easterly flow and thus axial infilling of the basin from the west (slumps likely propagated in sediments accumulating adjacent to the footwall block to the south). In contrast, the sharp base to the sandstone

package in core at Albert Mines #4 ([Figure 4](#)) may indicate the presence of an unconformity (e.g. incised valley). Together with the diversity of fluvial-lacustrine and paludal lithofacies associations in core, and other known lithofacies successions in outcrop and wireline data, the lake basin that accumulated Albert Formation strata is considered to have been predominantly overfilled, with infrequent balanced fill ([Figure 9](#)).

Known Petroleum Systems

The McCully Field, covering over 11,400 hectares, is a large anticlinal structure (progressively formed by successive Carboniferous deformation events) with four way closure. Intraformational faults, stratigraphic pinch outs, and the base Sussex Group unconformity are likely also factors in trapping the gas. To date, drilling has been concentrated on the crest and northwest limb ([Figure 4](#)), and wells have only penetrated to the Frederick Brook Member (the source rock). Production is currently from two Hiram Brook Member sandstone packages, several meters thick, at ~2.3 km depth, with gas pressure >500 psi above hydrostatic for this depth, indicating a >500 m gas column. Porosities (av. 8%) and permeabilities are low, because of the fine grain size and high capillary pressure. Low thermal gradients, coupled with the overpressures, can lead to hydrate formation. Furthermore, the sandstone is desiccated: in having very low water saturation (10-20%), irreducible water (S_w) capacity is much higher, meaning that any added water produces phase blocking. Production data from the old Stoney Creek Field has been poorly recorded but was from a south dipping Hiram Brook Member (possibly also Dawson Settlement Member) sandstone lenses (up to 30 m thick) over a stratigraphic interval of ~800 m that covered 150 hectares. Porosities average 12% and S_w is ~15%. The trap is formed by the unconformity with overlying Mississippian tectonic cycle 3 redbeds and the source rock is the Fredericks Brook Member.

References Cited

Bradley, D. C, 1982, Subsidence in late Paleozoic basins in the northern Appalachians: *Tectonics*, v. 1, p. 107-123.

Carroll, A.R., and K.M. Bohacs, 1999, Stratigraphic classification of ancient lakes: Balancing tectonic and climatic controls: *Geology*, v. 27, p. 99–102.

Keighley, D.G., 2000, A preliminary sequence stratigraphy of the Horton Group, southeastern New Brunswick: interpretation of the Dawson Settlement Member of the Carboniferous Albert Formation, Shell Albert Mines #4 well: New Brunswick Department of Natural Resources and Energy, Minerals, and Energy Division, Mineral Resource Report 2000-4, p. 17–29.

Keighley, D., and D.E. Brown, 2005. Field Trip A5, Facies heterogeneity in lacustrine basins: the transtensional Moncton Basin (Mississippian) and extensional Fundy Basin (Triassic-Jurassic), New Brunswick and Nova Scotia: GAC-MAC-CSPG-CSSS Joint Meeting, Halifax, Atlantic Geoscience Society, AGS Special Publication Number 24100, ISBN 0-9737981-3-0, 100 p.

Keighley, D., and D. Gemmell, 2005, Post-Windsor structure in the Sussex area of the Moncton Basin, New Brunswick: Atlantic Geoscience Society Annual Meeting, Saint John, NB, Program with abstracts, p. 24.

Keighley, D., and D. Mohan, 2006, A potential outcrop analogue for a secondary reservoir in the McCully Gas field, Sussex, New Brunswick: lithofacies and spectral gamma-ray analysis: Abstract, CSPG-CSEG-CWLS Joint Annual Convention, Calgary, Alberta, May 2006.

Keighley, D., S. Flint, J. Howell, and A. Moscariello, 2003, Sequence stratigraphy in lacustrine basins: a model for part of the Green River Formation (Eocene), southwest Uinta Basin, Utah: *Journal of Sedimentary Research*, v. 73, p. 987–1006.

Lambiase, J.J., 1990, A model for tectonic control of lacustrine stratigraphic sequences in continental rift basins *in* B.J. Katz (ed.), *Lacustrine basin exploration – case studies and modern analogs*: American Association of Petroleum Geologists Memoir 50, p. 265–276.

Olsen, P.E., 1990, Tectonic, climatic, and biotic modulation of lacustrine ecosystems - Examples from Newark Supergroup of eastern North America, *in* B.J. Katz (ed.), *Lacustrine basin exploration – case studies and modern analogs*: American Association of Petroleum Geologists Memoir 50, p. 209–224.

Park, A.F., and C.J. St. Peter, 2005, Deformation of Lower Carboniferous rocks in the Rosevale to Saint-Joseph area, Albert and Westmorland counties, southeastern New Brunswick, *in* G.L. Martin (ed.), *Geological Investigations in New Brunswick for 2004*: New Brunswick Department of Natural Resources; Minerals, Policy, and Planning Division, Mineral Resource Report 2005-1, p. 45-98.

Park, A., C. St. Peter, and D. Keighley, 2006, Lower Carboniferous history of the Indian Mountain deformed zone, Westmorland County, SE New Brunswick: Abstract, GAC-MAC Joint Annual Conference, Montreal, Canada, May 2006

St. Peter, C., 1993, Maritimes Basin evolution: key geologic and seismic evidence from the Moncton Subbasin of New Brunswick: *Atlantic Geology*, v. 29, p. 233–270.

St. Peter, C.J., 2003, Revisions to Lower Carboniferous Horton Group stratigraphy in New Brunswick, Canada: Abstract, Joint Meeting, Atlantic Geoscience Society and Geological Society of America, Northeastern Section, Halifax, March 2003.

Wilson, P., 2003, Stratigraphy, evaporite structure, and tectonic history in the McCully area, southern New Brunswick: Preliminary results: New Brunswick Department of Natural Resources; Minerals, Policy and Planning Division, Mineral Resource Report 2003-4, p.101-121.

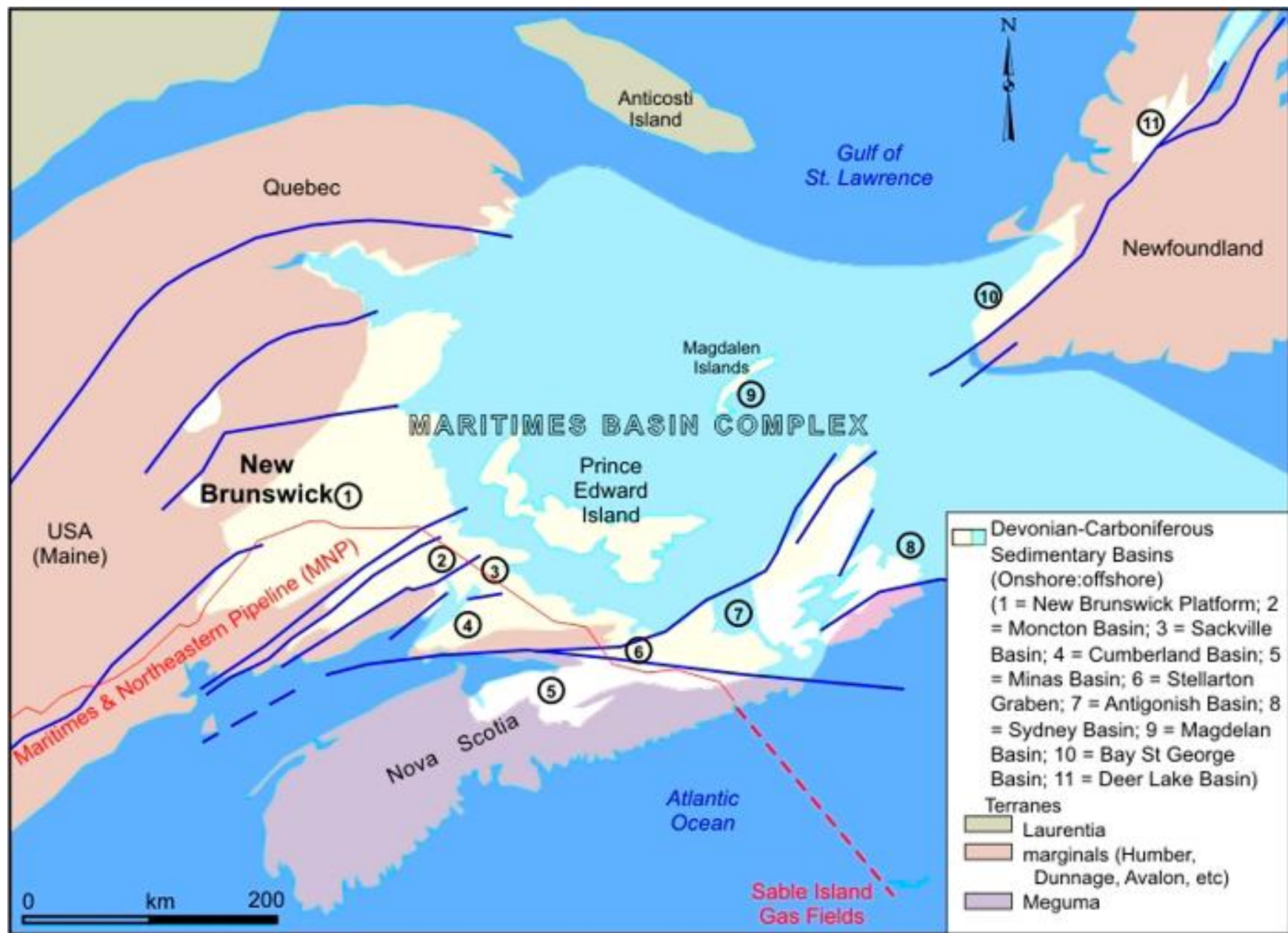


Figure 1. General location map, showing major structural components of the Maritimes Basin Complex and location of the Maritimes and Northeastern Pipeline.

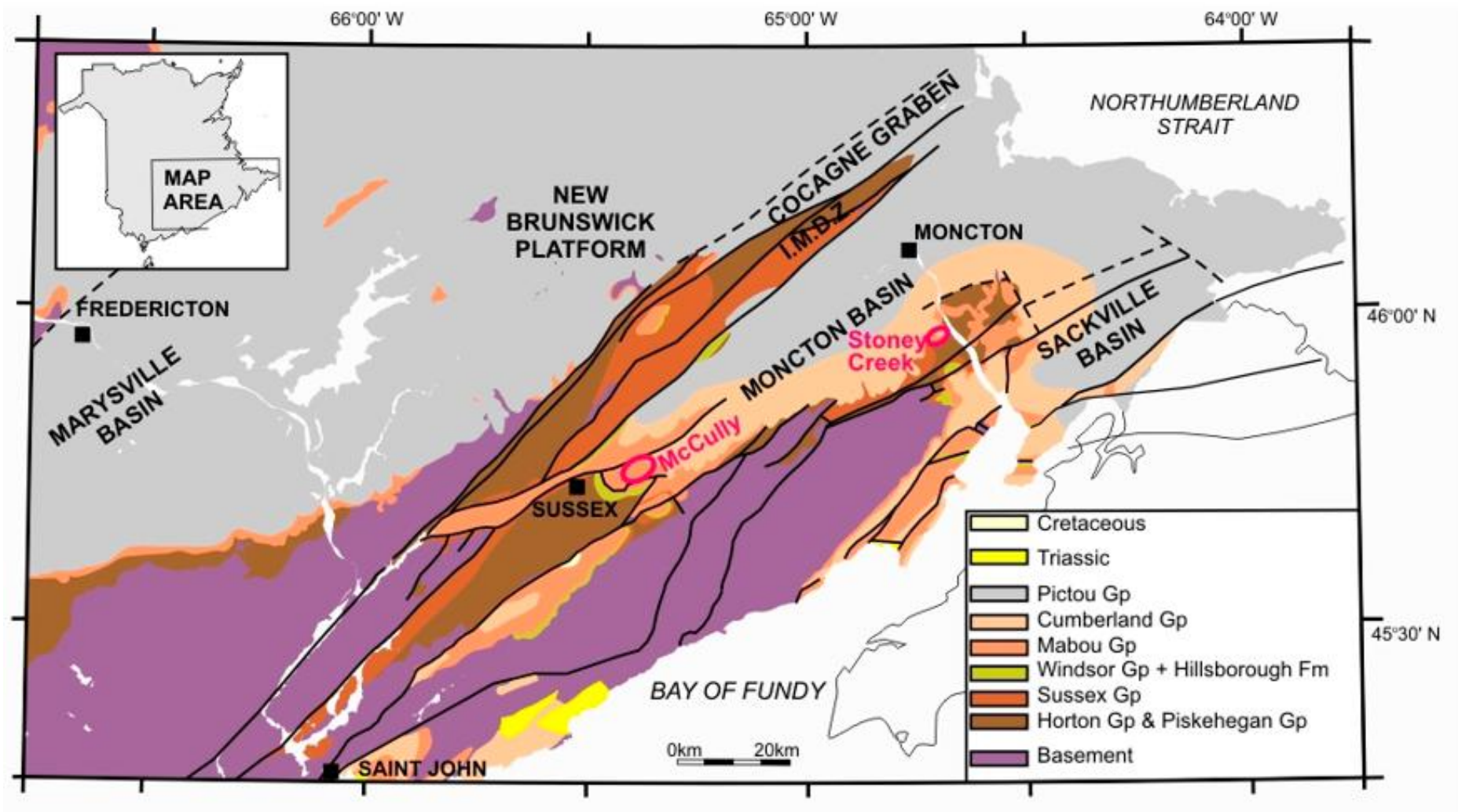


Figure 2. Major Upper Paleozoic structural elements in SE New Brunswick (IMDZ = Indian Mountain Deformed Zone).

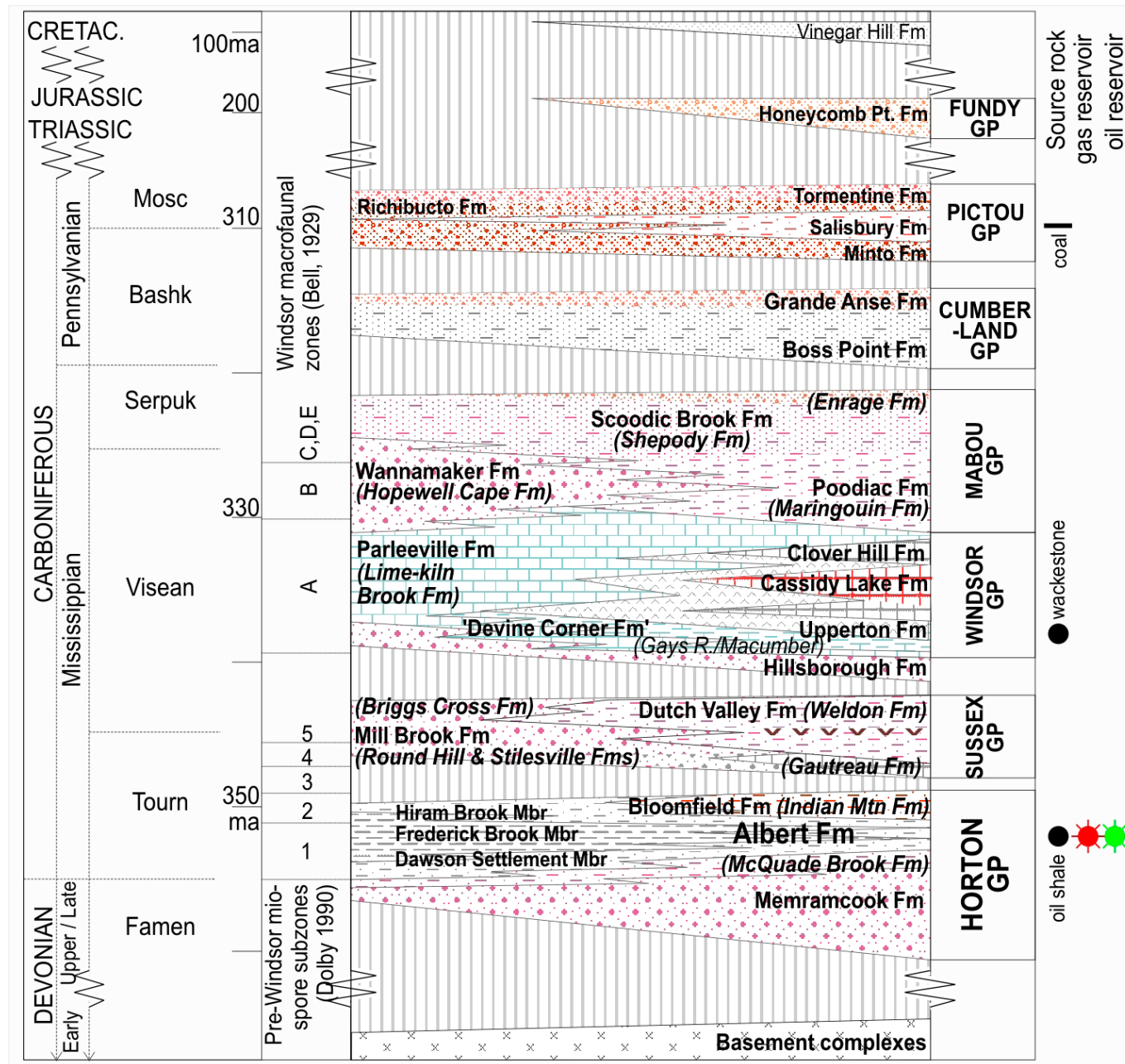


Figure 3. Stratigraphy of the Moncton Basin.

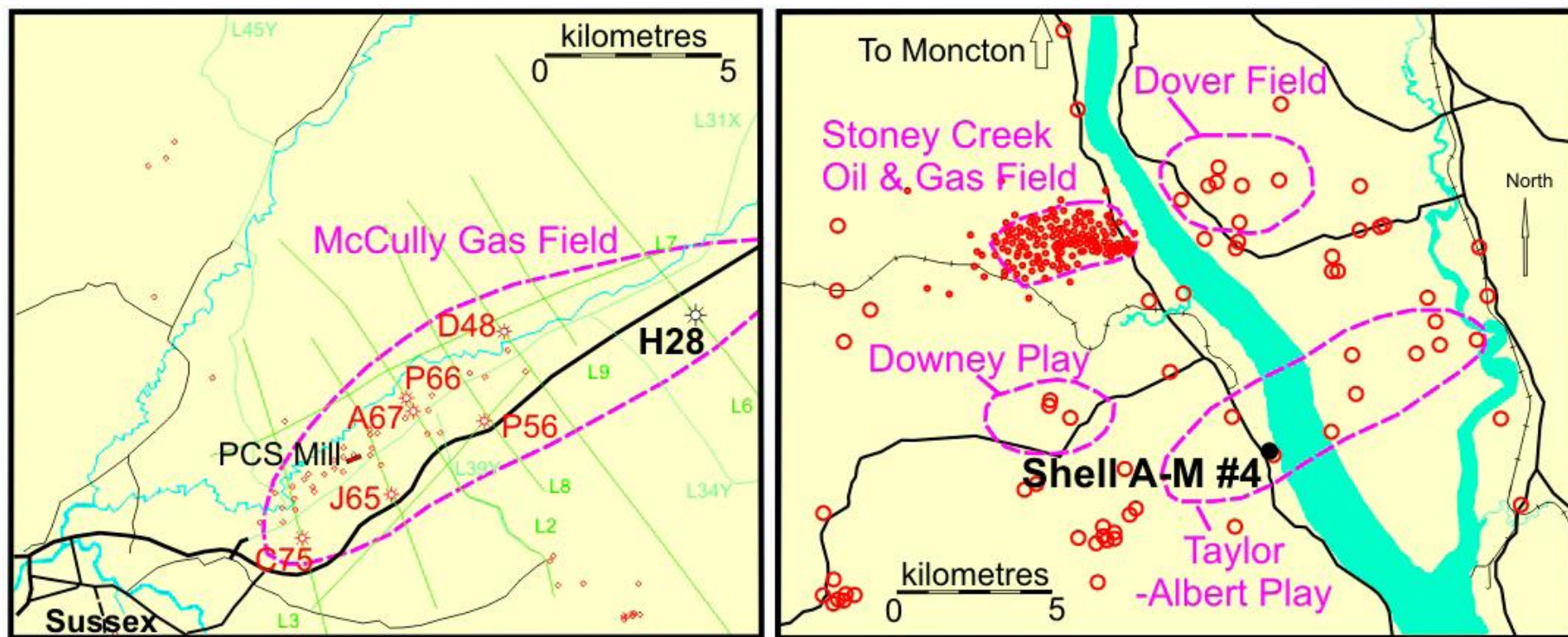
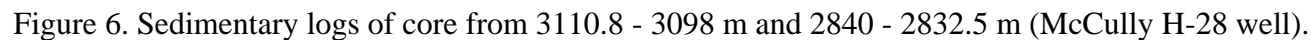


Figure 4. Location of the Shell Albert Mines #4 and McCully H28 wells.



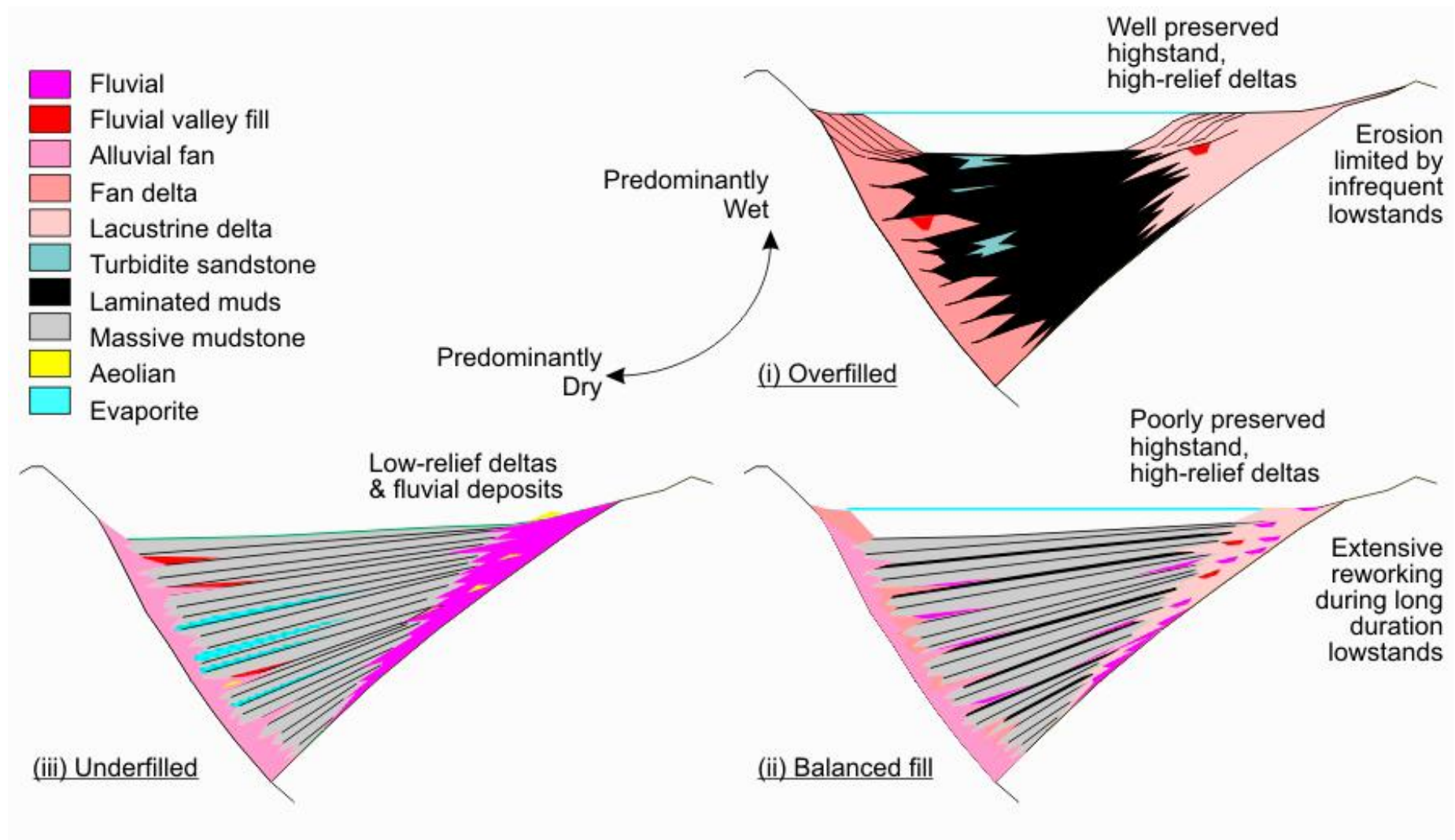


Figure 7. Climate influence on lake-level curves and sequence architecture for early rift phases in i) high-latitude, persistently wet (overfilled) systems; ii) tropical (balanced) systems; and iii) sub-tropical, semi-arid climate (underfilled) systems (from Keighley and Brown 2005, after Olsen 1990).

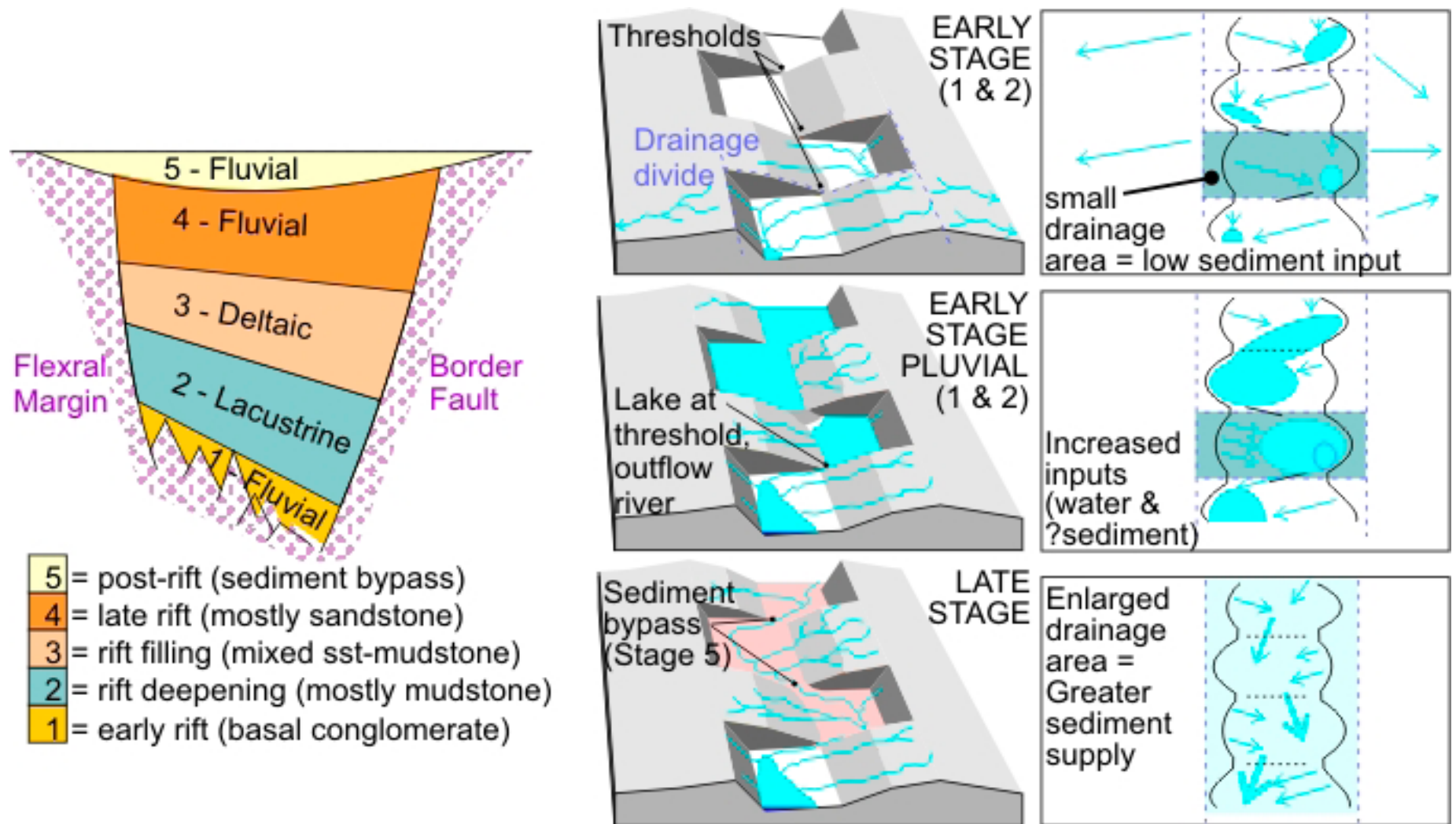


Figure 8. Low resolution tectonic sequences. A) Cartoon cross-section across a rift basin, showing Lambiase's (1990) 5 stages of basin fill. B to D) Models for lake basins at different stages of fill (from Keighley and Brown 2005).

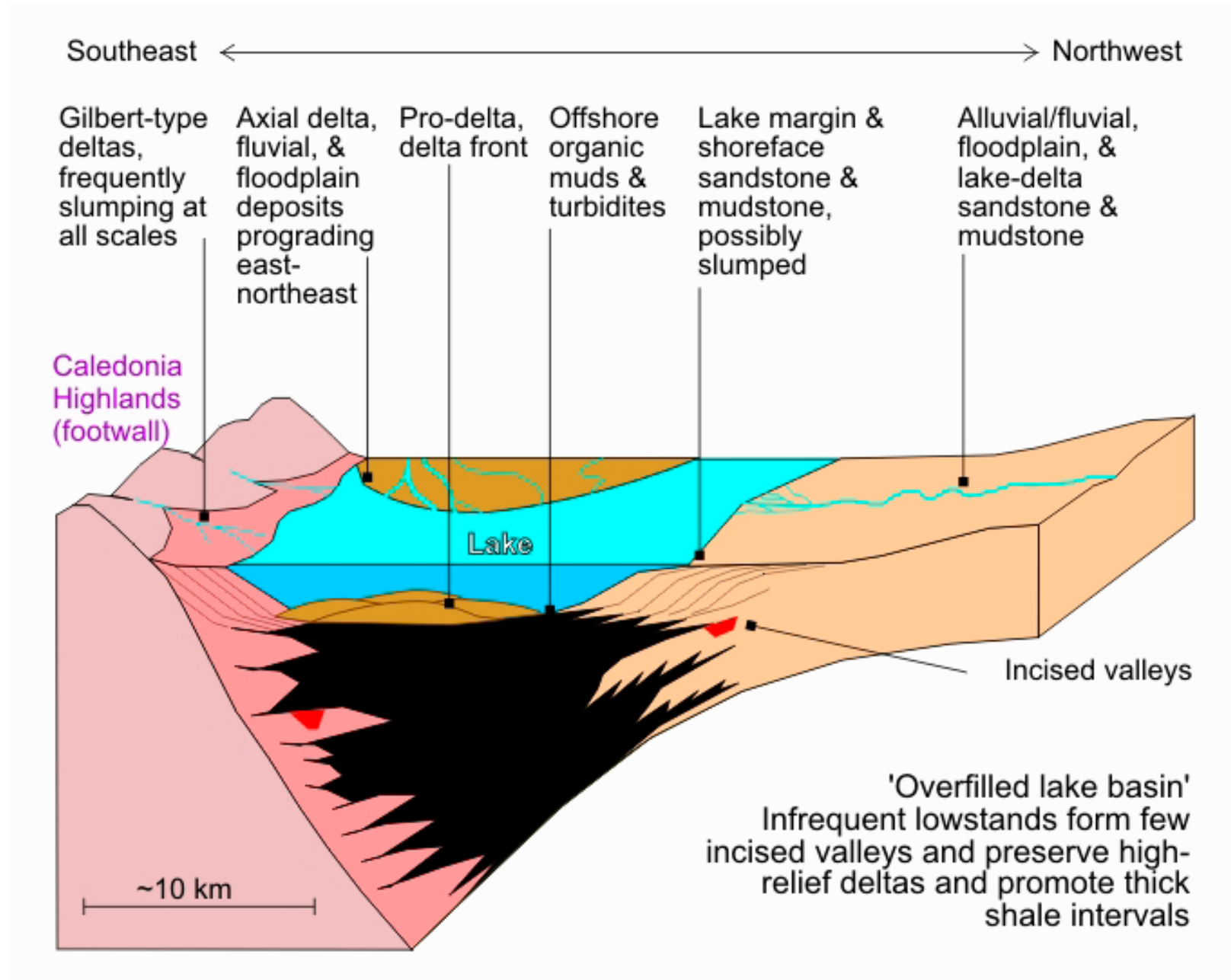


Figure 9. Suggested model for Albert Formation lakes in southern New Brunswick (from Keighley and Brown 2005).