

# **AV From First Idea to 10TCF in 10 Months: Discovery of Eagle Ford Shale in Hawkville Field\***

**Gregg Robertson<sup>1</sup>**

Search and Discovery Article #110137 (2010)

Posted June 28, 2010

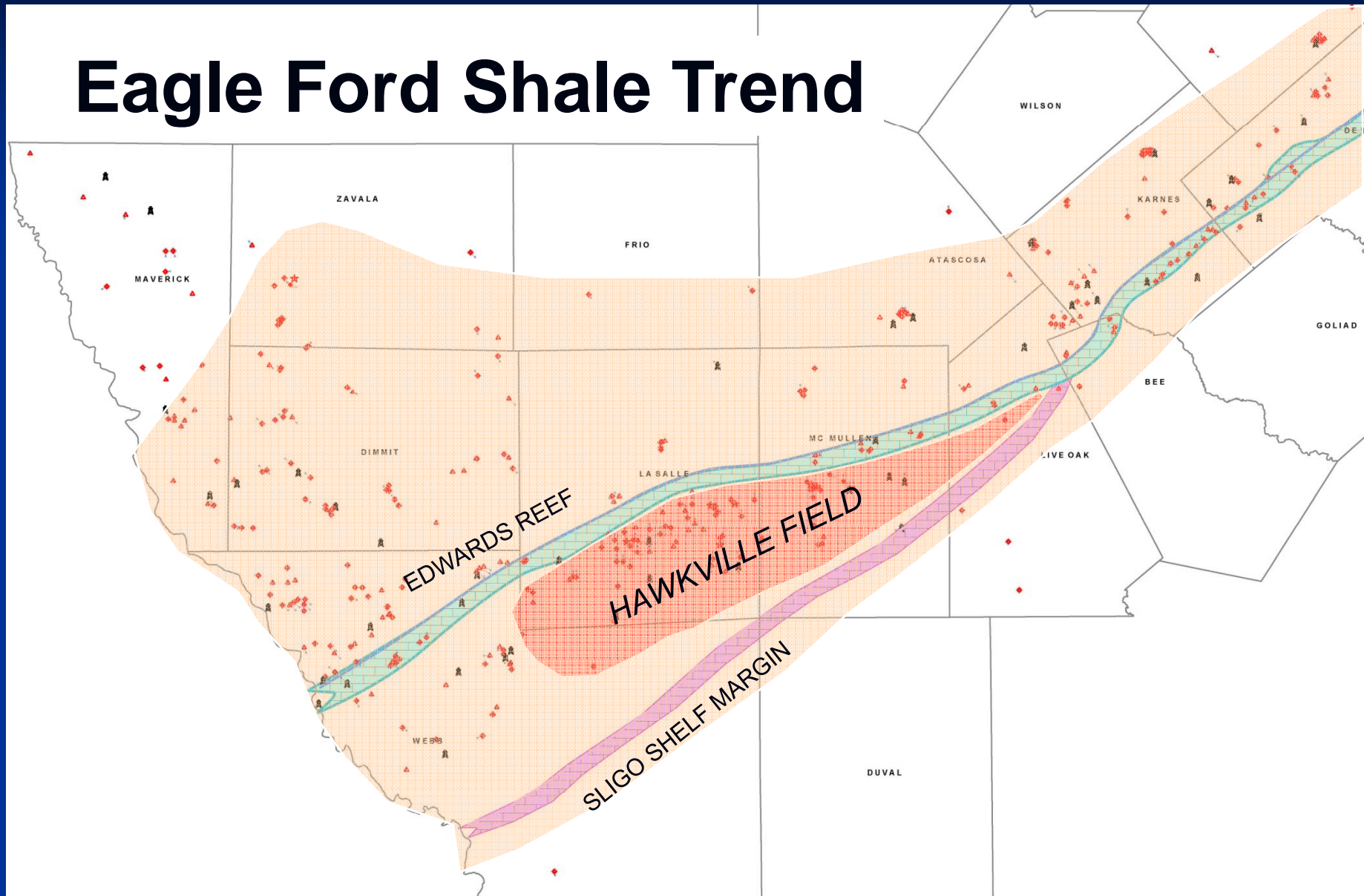
\*Adapted from presentation at Forum, Discovery Thinking, at AAPG Annual Convention, New Orleans, Louisiana, April 11-14, 2010

<sup>1</sup>Independent Oil & Energy Professional, Corpus Christi, Texas ([firstrockinc@msn.com](mailto:firstrockinc@msn.com))

**From First Idea  
to 10 TCF in 10 Months:**

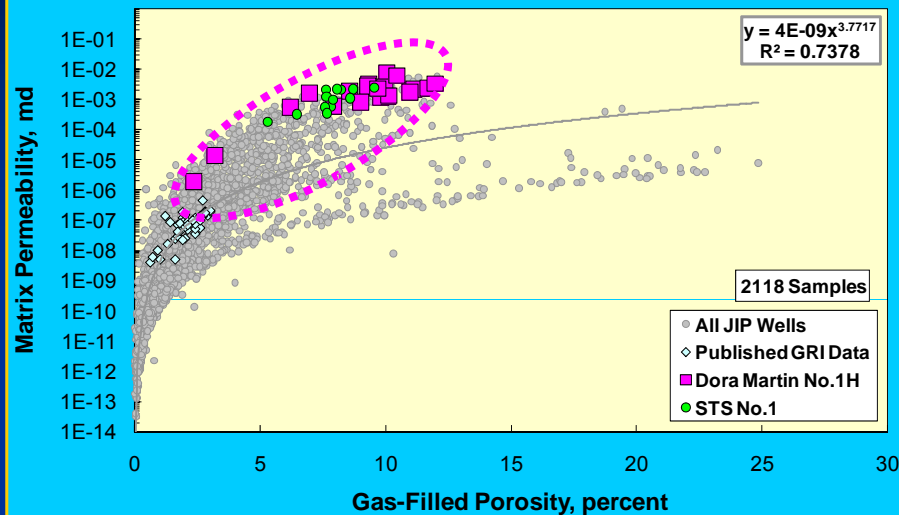
***Discovery of Eagle Ford  
Shale in Hawkville Field***

# Eagle Ford Shale Trend

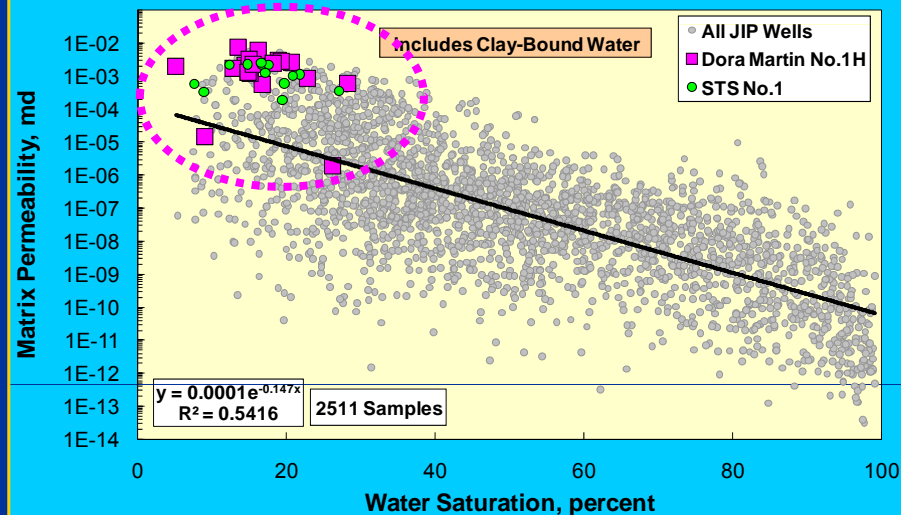


# First Rock STS 1 & Dora Martin 1: Summary of Rock Properties & Comparison To Other Shale Plays

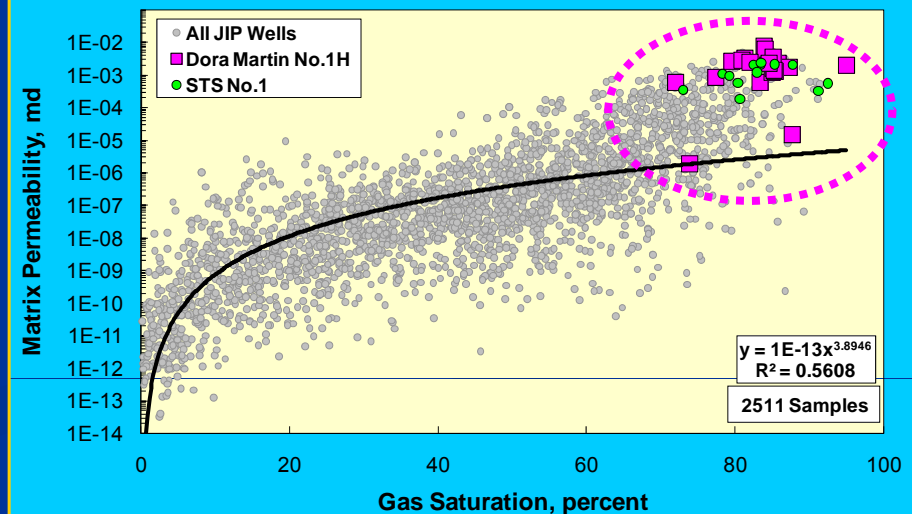
**BASIC ROCK PROPERTIES  
(GRI Method)**



**BASIC ROCK PROPERTIES  
(GRI Saturation)**



**BASIC ROCK PROPERTIES  
(GRI Saturation)**





**POINT NUMBER ONE:** *A good plan to make a significant discovery is to study a specific trend in infinite detail, never taking a shortcut on good science, knowing the players and competitors who are also hunting for the prize – becoming an EXPERT.*

**POINT NUMBER ONE “A”:** *While becoming an expert, never stop and think you’ve learned it all.*



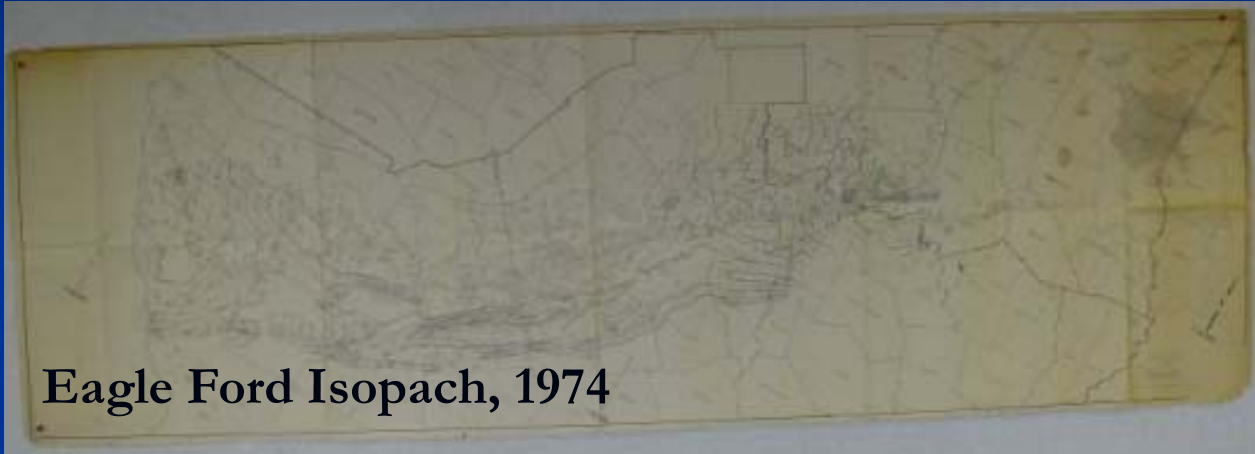


**POINT NUMBER TWO:** *Don't ever underestimate the value of good will established by strong working relationships with good people in the business.*

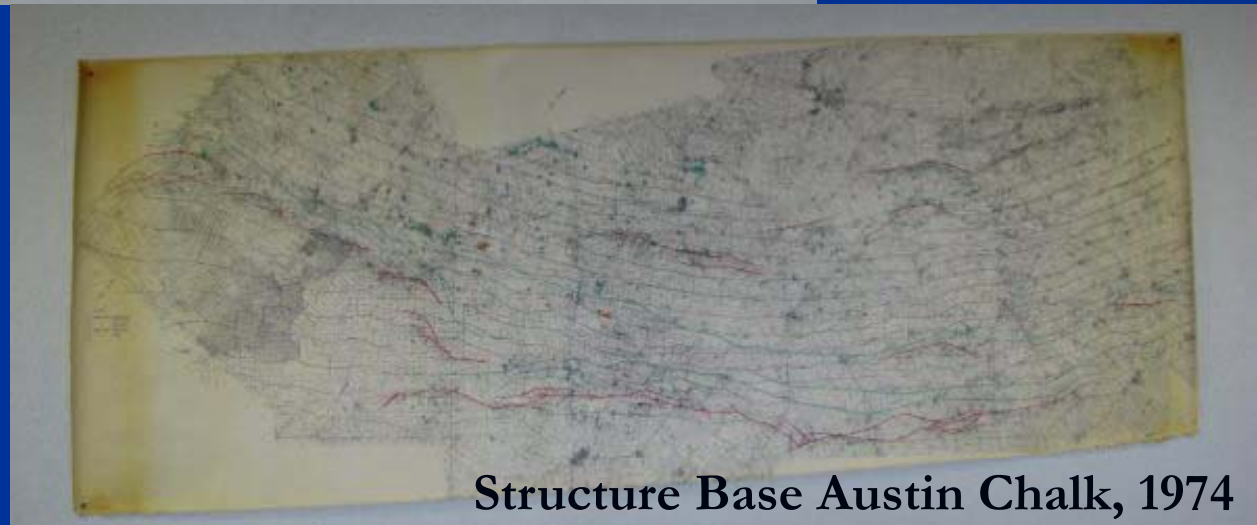
**POINT NUMBER TWO "A":** *Building good will doesn't guarantee making a major discovery, but it sure makes the journey more rewarding.*



# “The Dead Sea Scrolls”



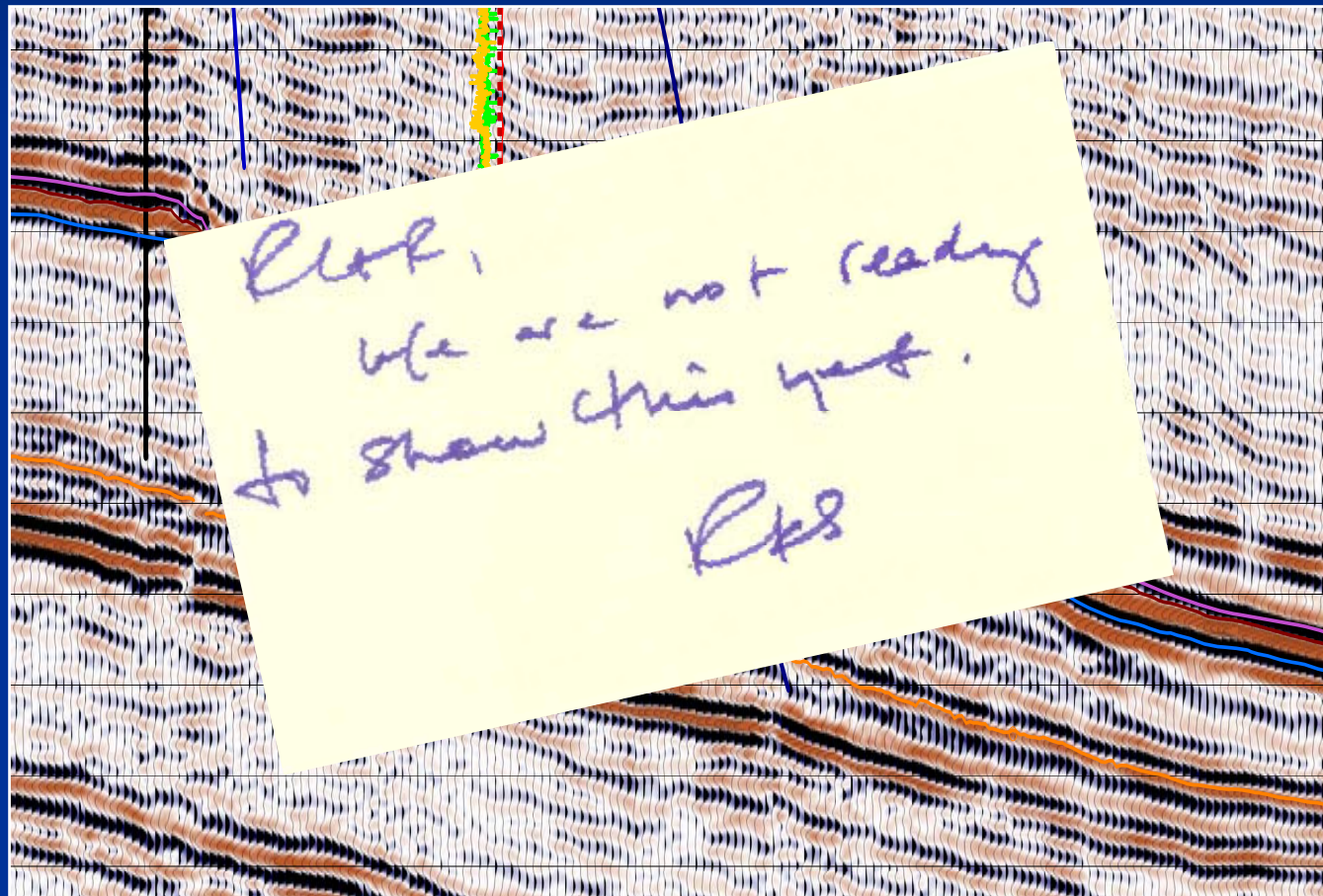
Eagle Ford Isopach, 1974



Structure Base Austin Chalk, 1974

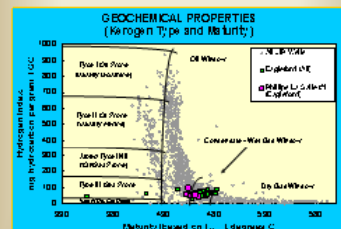
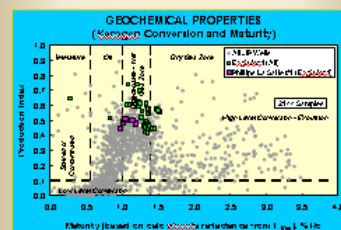
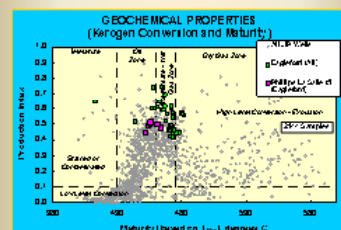
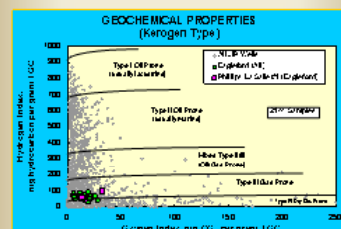
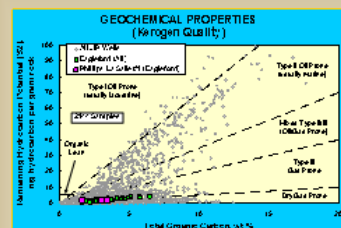


## Incredibly important seismic attribute used to map the Eagle Ford Shale:

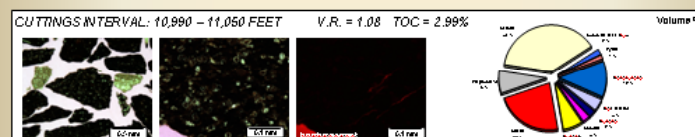
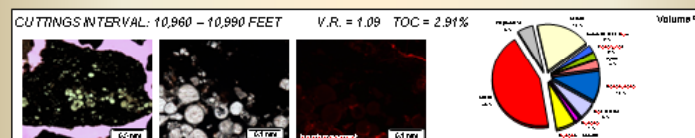
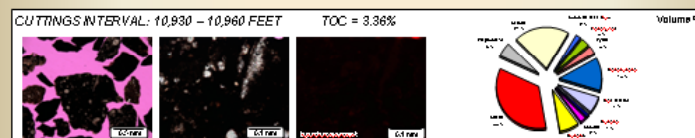
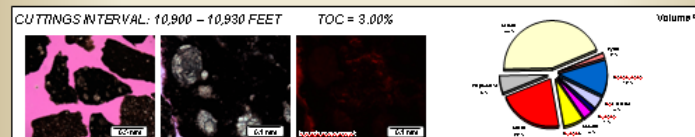
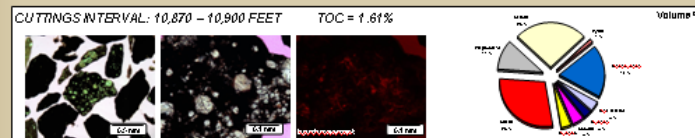




## GEOCHEMISTRY



## PETROGRAPHY



## GAS SHALE FORMATION RECONNAISSANCE EVALUATION

Phillips La Salle No. 1  
LA SALLE COUNTY, TX

JH: 000 176

March, 2003



**POINT NUMBER THREE:** *Good science, thorough diligence, Points 1 through 2a, lead to prospect generation that you can really believe in.*

**POINT NUMBER THREE “A”:** *No, REALLY believe in, because it's hard to be bold and aggressive if you still have doubts.*

**Oil and Gas Investor**  
A HART ENERGY PUBLICATION JANUARY 2009

**HAYNESVILLE SHALE**

East Texas and North Louisiana have joined another vitalizing resource—the superb Haynesville shale.

ARTICLE BY  
PHILIP WILLIAMS  
PHOTOGRAPH BY  
JAMES GUNN

There are few  
oil and gas  
fields nearby;  
others have  
run out with the  
last decades of oil  
production from

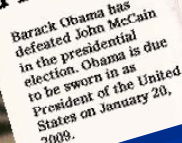
Petroleum had previously studied one Elm Grove well that had penetrated Haynesville, and it engineered its initial shale test in the south-central state with a town named and

The Haynesville Times  
Haynesville, La.  
Published Weekly  
November 1964

**The Haynesville**  
**Petrohawk Posts FIVE**  
**Haynesville IPs Over 15 Mmcfe/d!**  
Increases Risked Haynesville Shale Potential to 11.9 Tcfe  
total company is now over 21 Tcfe, including  
3.5 Tcfe added by the newly discovered Eagle  
ated President

The Company also revised its resource potential calculation in the Haynesville Shale based on the increased per well EUR assumption of 6.5 Bcfe. The new resource potential estimate for the Haynesville Shale is approximately 11.9 Tcfe. Petrolhawk's resource potential estimate for the

**Obama Elected President**

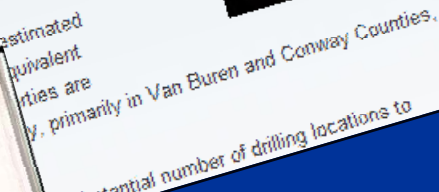


**Obama Elected**

Barack Obama has defeated John McCain in the presidential election. Obama is due to be sworn in as President of the United States on January 20, 2009.

## Petrohawk Energy expands in Fayetteville Shale

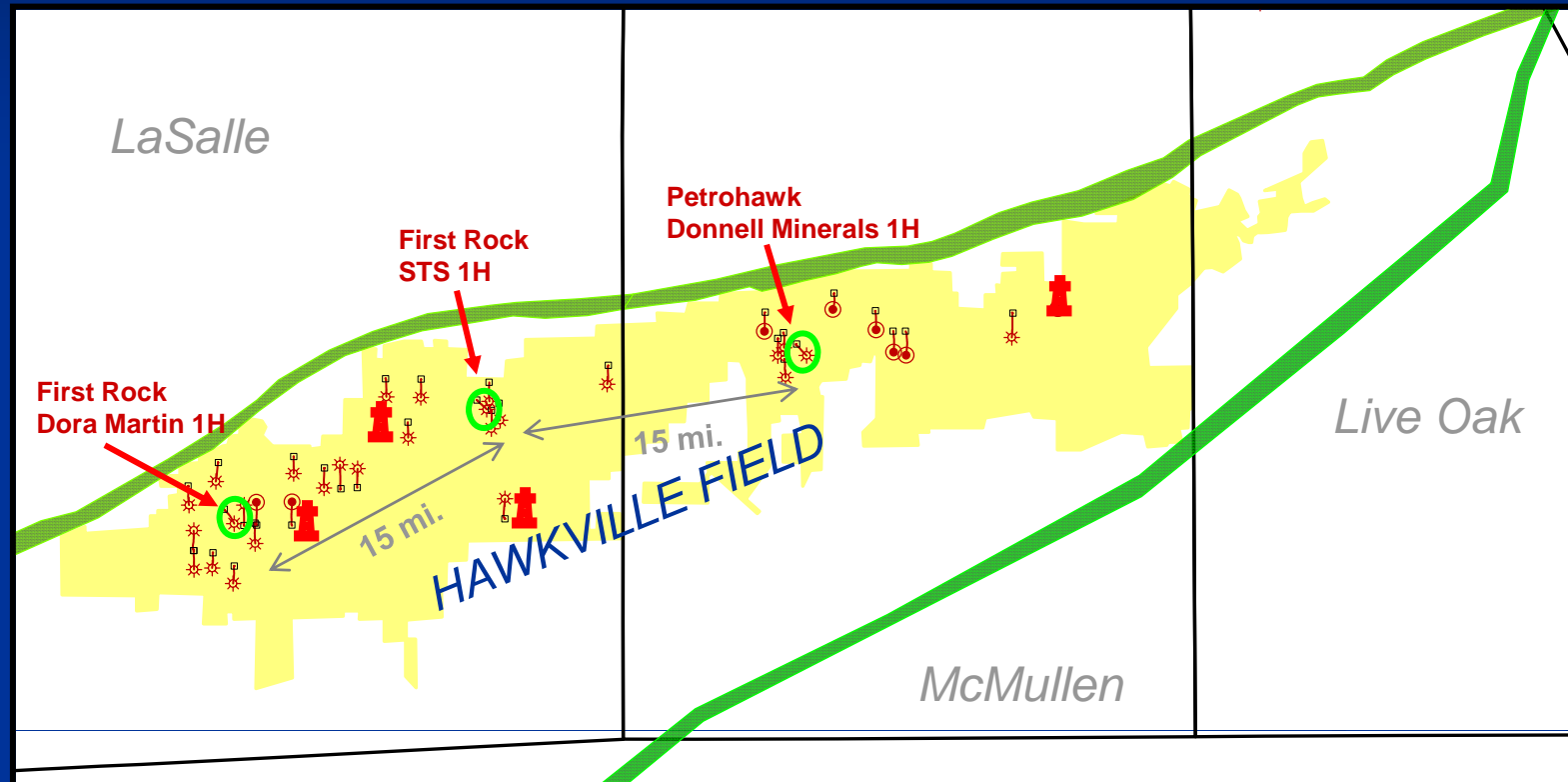
Published Nov 28, 2007  
 Email Print  
 Petrohawk Energy Corporation has signed a definitive agreement to purchase strategic assets in the Fayetteville Shale for \$343 million in cash from Alta Resources, LLC, Contango Oil & Gas Company, and other parties.



potential number of drilling locations to



# First Three Evaluation Wells With Current HK Producing Wells In Hawkville Field



**POINT NUMBER FOUR:** *The old adages “there are no tite holes” and “there are no true stealth plays” can be proven wrong with a little creativity and luck.*

**POINT NUMBER FOUR “A”:** *For Point 4 to work...you really have to keep your mouth shut!*

# Discovery Well Hawkville Field STS #1H, LaSalle County, Texas

